

The 2015 land cover map of Alto Hama, Angola has been developed as part of the process of land degradation assessment in the area from 2001 to 2021. A stratified random sampling by land cover class was used for training data collection in Collect Earth Online (CEO). Land cover legend classes are prepared using LCML/LCCS v3. A temporal segmentation has been applied to Landsat image collections over the area of interest using the continuous change detection and classification (CCDC) algorithm in SEPAL platform. CCDC slice for 1 July 2015 has been used to generate the 2015 land cover map of Alto Hama by using a random forest classification algorithm in Google Earth Engine (GEE).

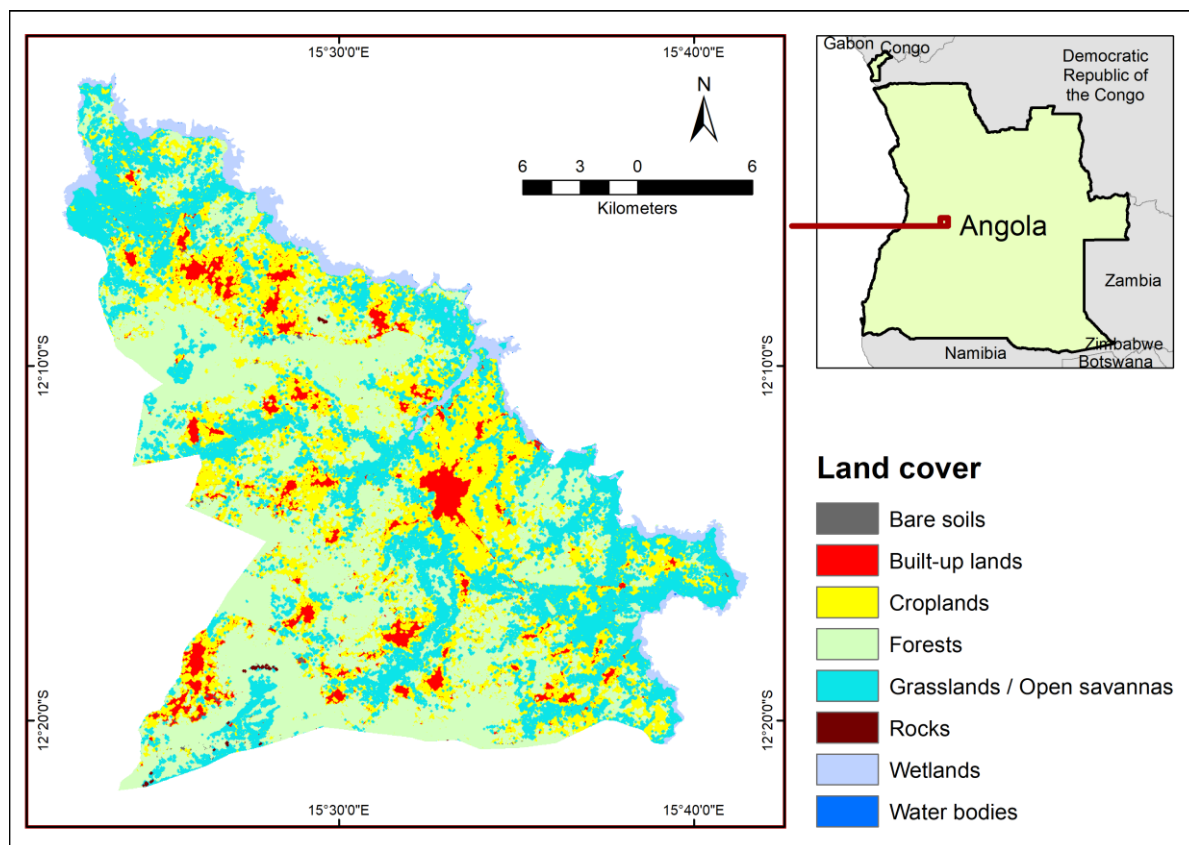


Figure 1: 2015 land cover map of Alto Hama, Angola¹

Table 1: 2015 land cover area statistics

Land cover class	Area (km ²)	Area (%)
Bare soils	1	0.21
Built-up lands	27	4
Croplands	150	24
Forests	233	37
Grasslands / Open savannas	182	29
Rocks	1	0.10
Wetlands	26	4
Water bodies	0.13	0.02
Total	620	100

Key Findings

Dominant land cover classes observed in 2015 (top three) are:

1. Forests (37%),
2. Grasslands / Open savannas (29%),
3. Croplands (24%).