



Source: United Nations. 2020. Map of the world [online]. [Cited July 2022]

The extent of cropland was prepared in support to nature-based solutions (NBS) indicator monitoring in Viet Nam, which was obtained by training a machine learning model to classify the satellite imageries (Planet, Sentinel-1 and Sentinel-2) for 2021. The result was further separated into rainfed and irrigated cropland based on EVI and NDVI indices of the winter season and aggregated at the townlets level for comparative assessment.

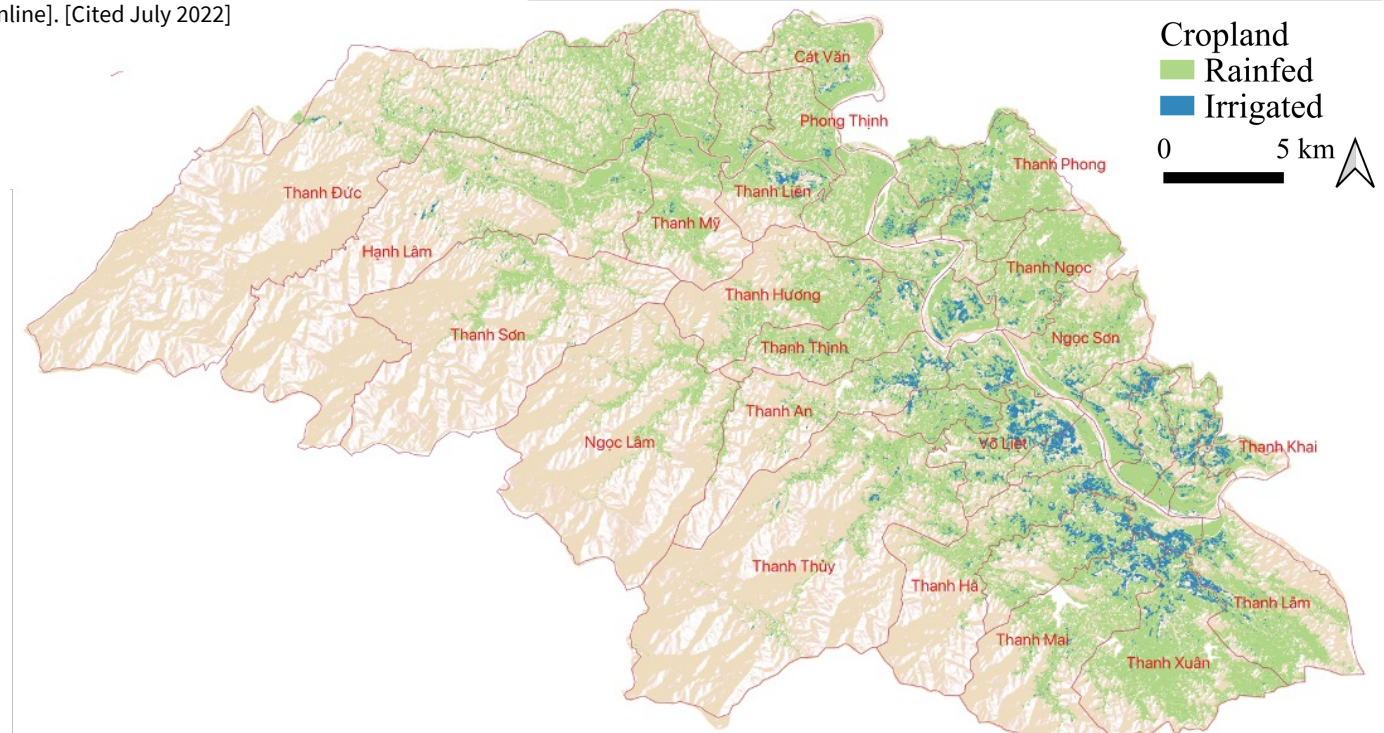


Figure 1: Spatial extent of cropland (irrigated and rainfed) in Thanh Chuong district in Viet Nam (2021)<sup>1</sup>

Table 1: Extent of rainfed and irrigated cropland (in ha) in Thanh Chuong district

Townlets	Rainfed	Irrigated	Total
Thanh Xuan	2 342	185	2 527
Thanh Duc	2 096	49	2 145
Thanh Lam	1 678	107	1 785
Thanh Mai	1 419	187	1 606
Hanh Lam	1 482	59	1 541
Thanh Thuy	1 401	65	1 466
Thanh Ngoc	1 390	46	1 436
Thanh Huong	1 178	34	1 213

Top eight

### Key Findings

- 35 453 ha (32 520 ha rainfed and 2 933 ha irrigated) of cropland is available in Thanh Chuong district in 2021.
- Townlets with a higher extent of cropland are Thanh Xuan, Thanh Duc, Thanh Lam, Thanh Mai and Hanh Lam.

Acknowledgement: The assessments were developed with the financial support of the government of Ireland.

Prepared by Shrijwal Adhikari, Amit Ghosh, Fatima Mushtaq, Beau Damen, Matieu Henry in close collaboration with World Agroforestry (ICRAF) and Asian Institute of Technology (AIT) for Monitoring of geospatial indicators for Nature Based solutions. Food and Agriculture Organization of United Nations, Rome, Italy.

<sup>1</sup> GADM. The boundaries and names shown, and the designations used on these map(s) do not express any opinion whatsoever on the part of FAO concerning the legal status of any country, territory, city or area or of its authorities, or concerning the delimitation of its frontiers and boundaries. Dashed lines on maps represent approximate border lines for which there may not yet be full agreement.