



# 2001 land cover map of Chipipa, Angola

The 2001 land cover map of Chipipa, Angola has been developed as part of the process of land degradation assessment in the area from 2001 to 2021. A stratified random sampling by land cover class was used for training data collection in Collect Earth Online (CEO). Land cover legend classes are prepared using LCML/LCCS v3. A temporal segmentation has been applied to Landsat image collections over the area of interest using the continuous change detection and classification (CCDC) algorithm in SEPAL platform. CCDC slice for 1 July 2001 has been used to generate the 2001 land cover map of Chipipa by using a random forest classification algorithm in Google Earth Engine (GEE).

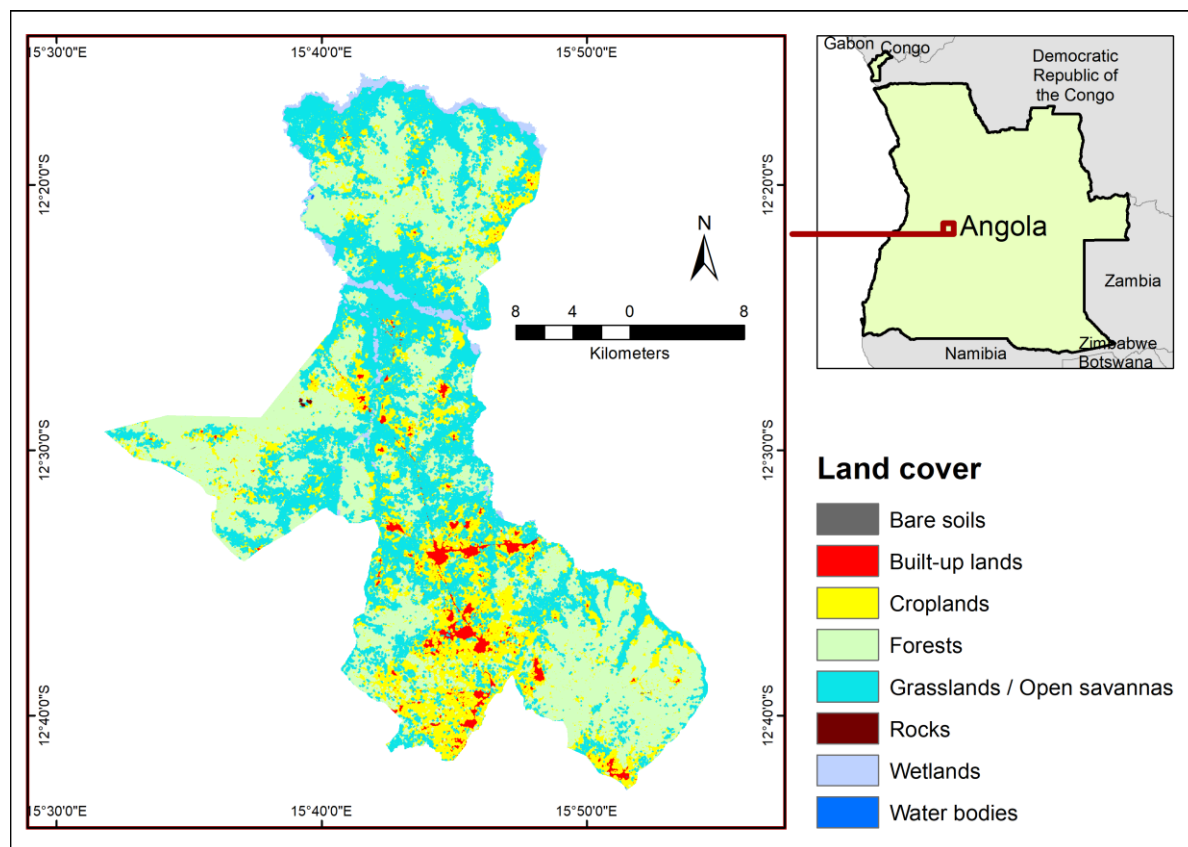


Figure 1: 2001 land cover map of Chipipa, Angola

Source: Country boundaries from the Global Administrative Unit Layers (GAUL) 2015<sup>1</sup>

Table 1: 2001 land cover area statistics

Land cover class	Area (km <sup>2</sup> )	Area (%)
Bare soils	0.30	0.04
Built-up lands	16	2
Croplands	138	18
Forests	302	40
Grasslands / Open savannas	285	38
Rocks	0.21	0.03
Wetlands	16	2
Water bodies	0.10	0.01
<b>Total</b>	<b>757</b>	<b>100</b>

## Key Findings

Dominant land cover classes observed in 2001 (top three) are:

1. Forests (40%),
2. Grasslands / Open savannas (38%),
3. Croplands (18%).

Prepared by Rashed Jalal, Jose Caela, Leonardo Monteiro, Cesar Pakissi, Fatima Mushtaq, Amit Ghosh, Gianluca Franceschini, Shrijwal Adhikari and Matieu Henry in support to Sustainable Land Management in target landscapes of Central Angola (GCP/ANG/055/GFF), Food and Agriculture Organization of United Nations, Rome, Italy.

<sup>1</sup> [https://data.apps.fao.org/map/catalog/srv/eng/catalog\\_search#/home](https://data.apps.fao.org/map/catalog/srv/eng/catalog_search#/home)

The boundaries and names shown, and the designations used on these map(s) do not express any opinion whatsoever on the part of FAO concerning the legal status of any country, territory, city or area or of its authorities, or concerning the delimitation of its frontiers and boundaries. Dashed lines on maps represent approximate border lines for which there may not yet be full agreement.

