



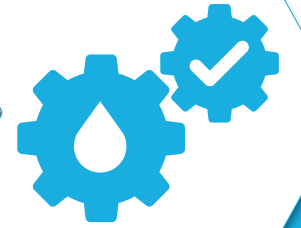
Food and Agriculture Organization  
of the United Nations

# COUNTRY-SPECIFIC CASE STUDIES

**Camilla Simongini**

Land and Water Division (NSL), FAO

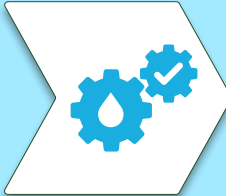
Tunis, 13 December 2022



Regional gathering  
Tunis, 12 – 16 December 2022



ITALIAN AGENCY  
FOR DEVELOPMENT  
COOPERATION



# PARAMETERS

## Selected indicators set

**User data**

**Project info**

**Indicators**

Click on the button to proceed

**Areas**

Select indicators

### Indicators

**Climate change**

Need

- Rainfall anomaly
- Temperature variations

**Environmental**

Impact

- Protected areas

Need

- Exposure to salinity
- Elevation profile
- Evapotranspiration
- Groundwater percentile
- Land degradation
- Precipitation
- Water seasonality

**Social-economic**

Impact

- Loss of agriculture land to urbanization
- Population density increase
- Area size

Need

- Food insecurity
- NDVI

**Technology**

Impact

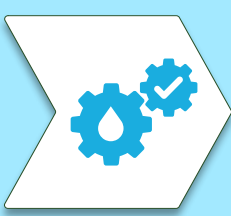
- Access to storage

Need

- Water deficit

**Evapotranspiration**

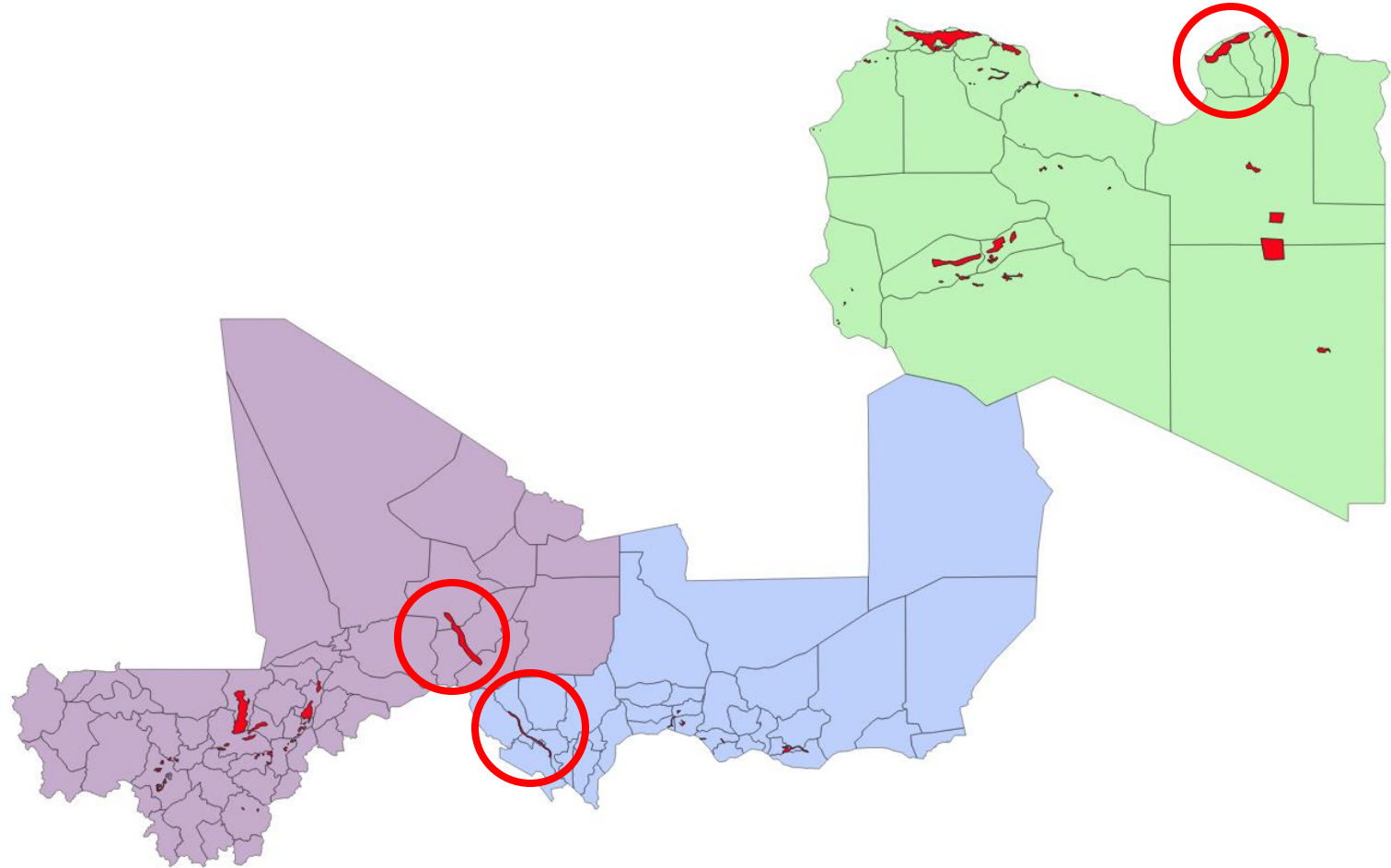
Projected variations in potential evapotranspiration for a 30 years period applying RCP 6.0.

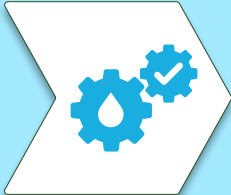


# PARAMETERS

Selected indicators set

Hydrological boundaries



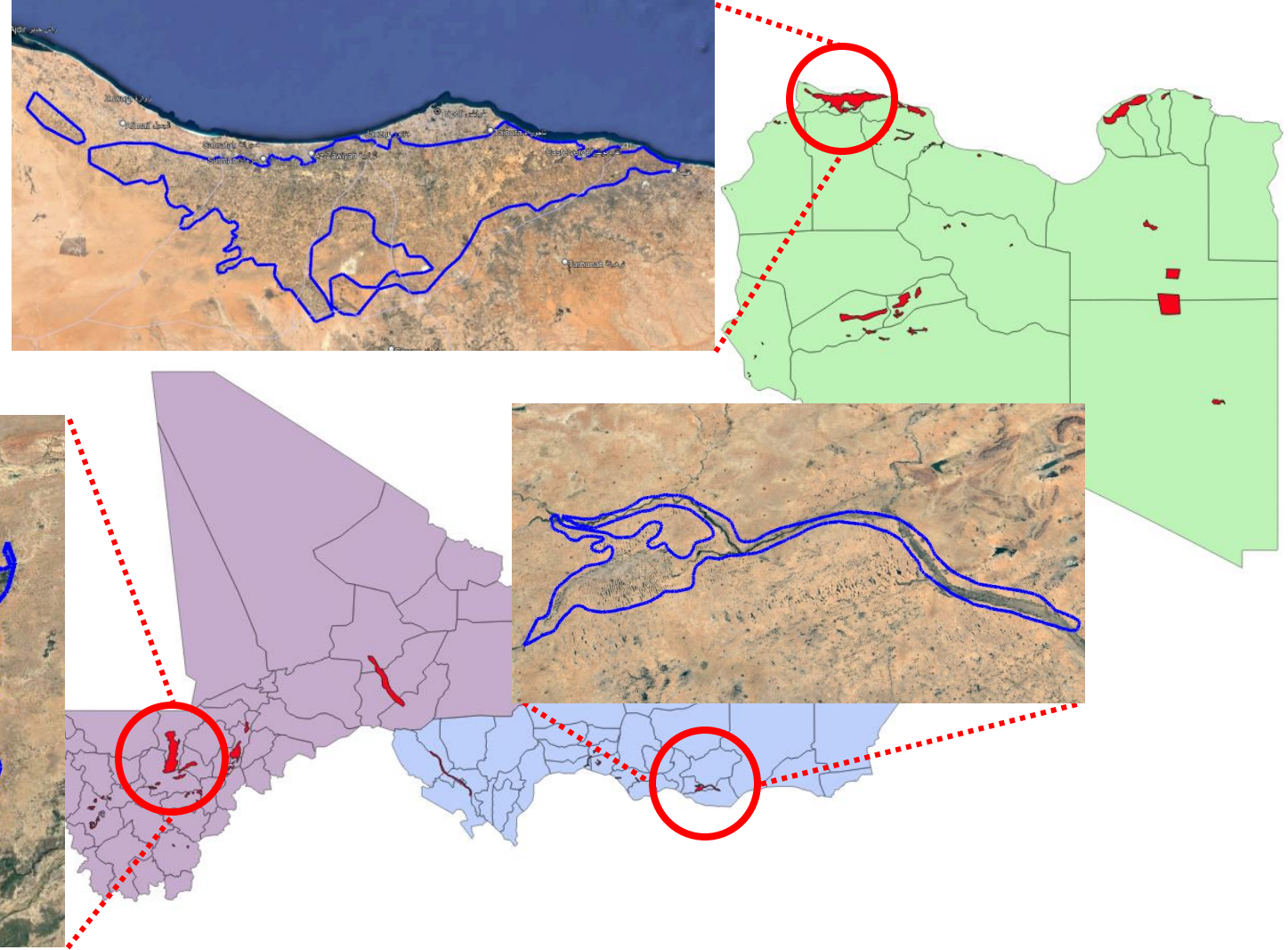


# PARAMETERS

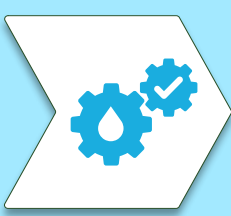
Selected indicators set

Hydrological boundaries

Arbitrary area boundaries



United Nations Geospatial. 2020. Map geodata [shapefiles]. New York, USA, United Nations, modified by the author. The boundaries and names shown and the designations used on these map(s) do not imply the expression of any opinion whatsoever on the part of FAO concerning the legal status of any country, territory, city or area or of its authorities, or concerning the delimitation of its frontiers and boundaries. Dashed lines on maps represent approximate border lines for which there may not yet be full agreement.



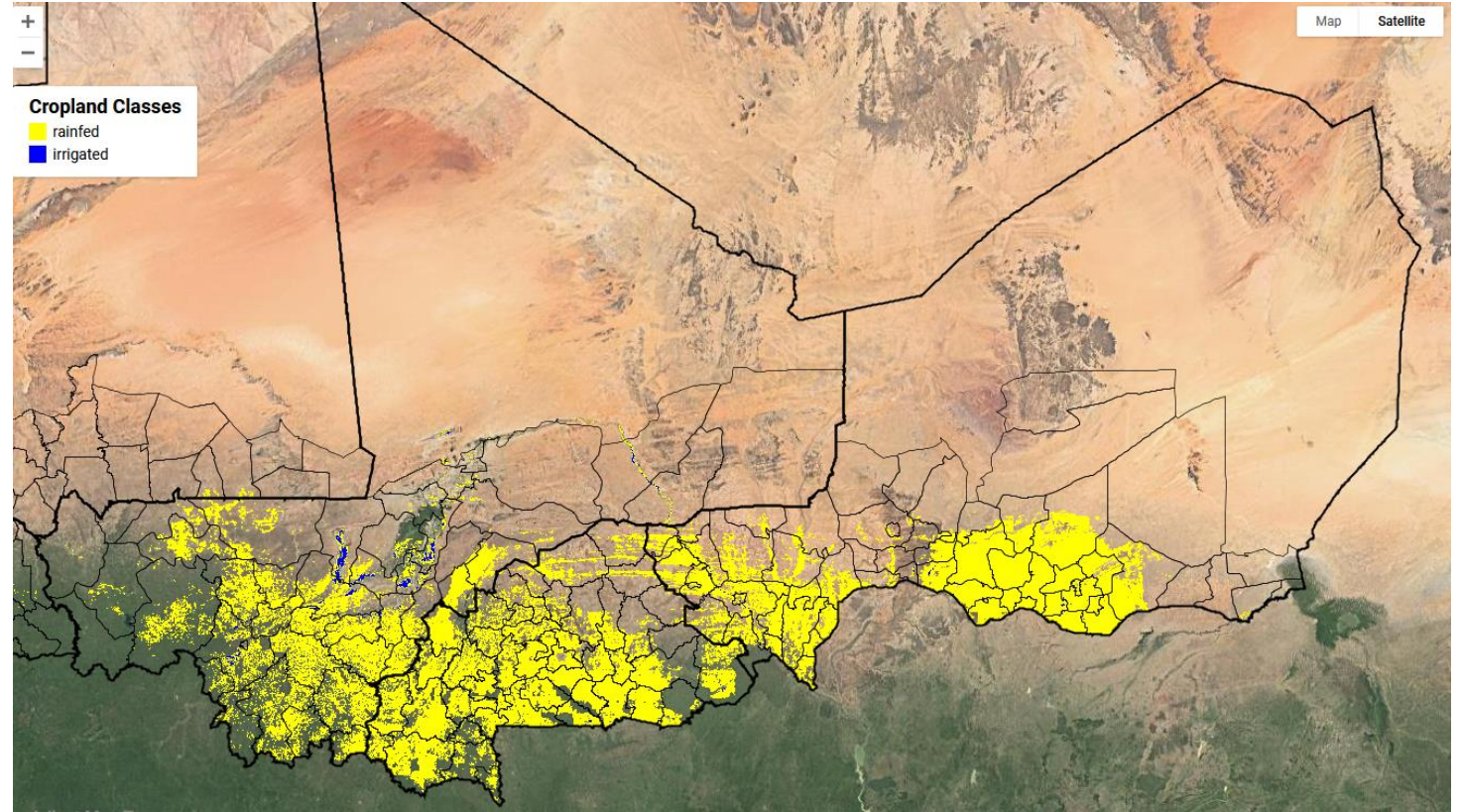
# PARAMETERS

Selected indicators set

Hydrological boundaries

Arbitrary area boundaries

Irrigated areas

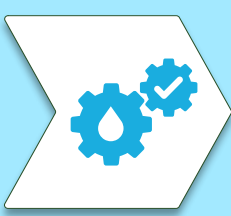


Source: Samasse et al., 2018, 2020. Cited December 2022. <https://savannalabnmsu.users.earthengine.app/view/wa-cropmap-30m>

*The boundaries and names shown and the designations used on these map(s) do not imply the expression of any opinion whatsoever on the part of FAO concerning the legal status of any country, territory, city or area or of its authorities, or concerning the delimitation of its frontiers and boundaries. Dashed lines on maps represent approximate border lines for which there may not yet be full agreement.*



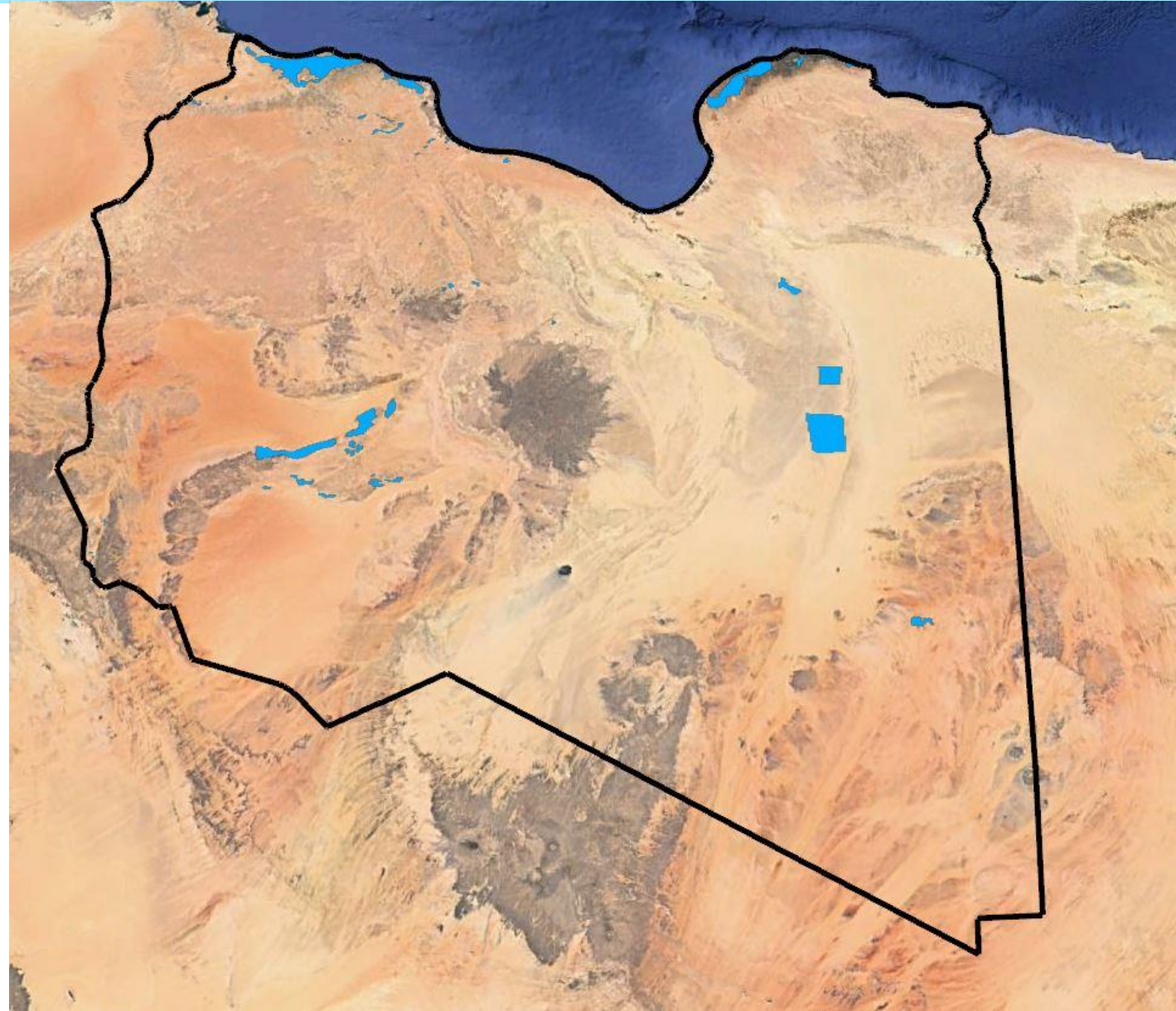
**LET'S RUN THE ANALYSIS**



# LIBYA

## 42

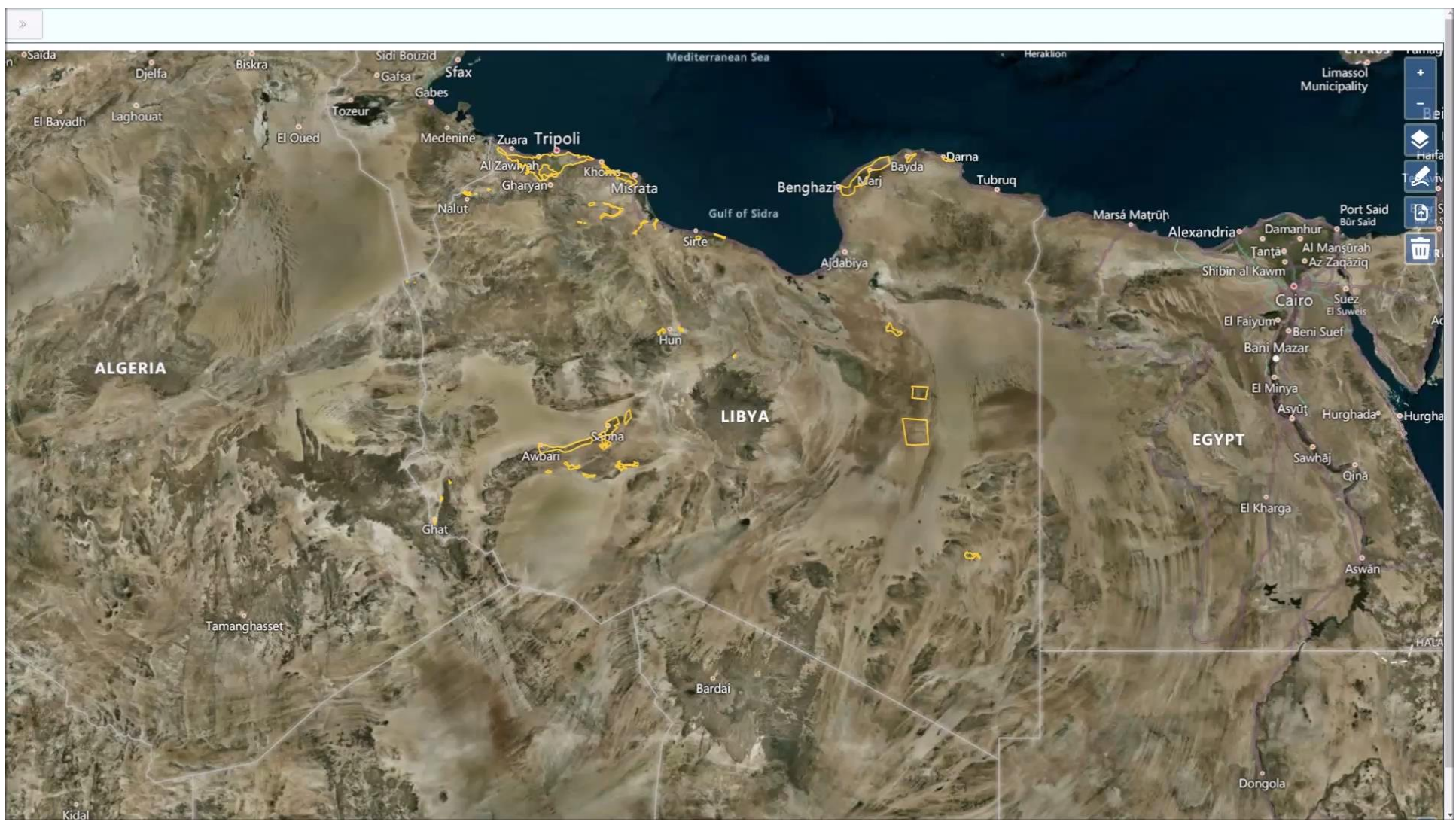
### Irrigation schemes



*United Nations Geospatial. 2020. Map geodata [shapefiles]. New York, USA, United Nations, modified by the author. The boundaries and names shown and the designations used on these map(s) do not imply the expression of any opinion whatsoever on the part of FAO concerning the legal status of any country, territory, city or area or of its authorities, or concerning the delimitation of its frontiers and boundaries.*

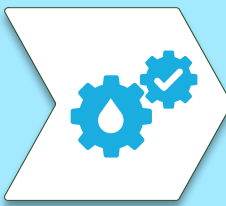


# VIDEO



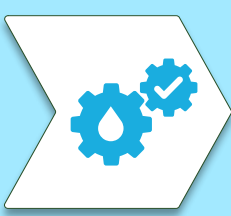
United Nations Geospatial. 2020. Map geodata [shapefiles]. New York, USA, United Nations, modified by the author. The boundaries and names shown and the designations used on these map(s) do not imply the expression of any opinion whatsoever on the part of FAO concerning the legal status of any country, territory, city or area or of its authorities, or concerning the delimitation of its frontiers and boundaries. Dashed lines on maps represent approximate border lines for which there may not yet be full agreement. Final boundary between the Sudan and South Sudan has not yet been determined. Final status of the Abyei area is not yet determined.





## RESULTS INTERPRETATION

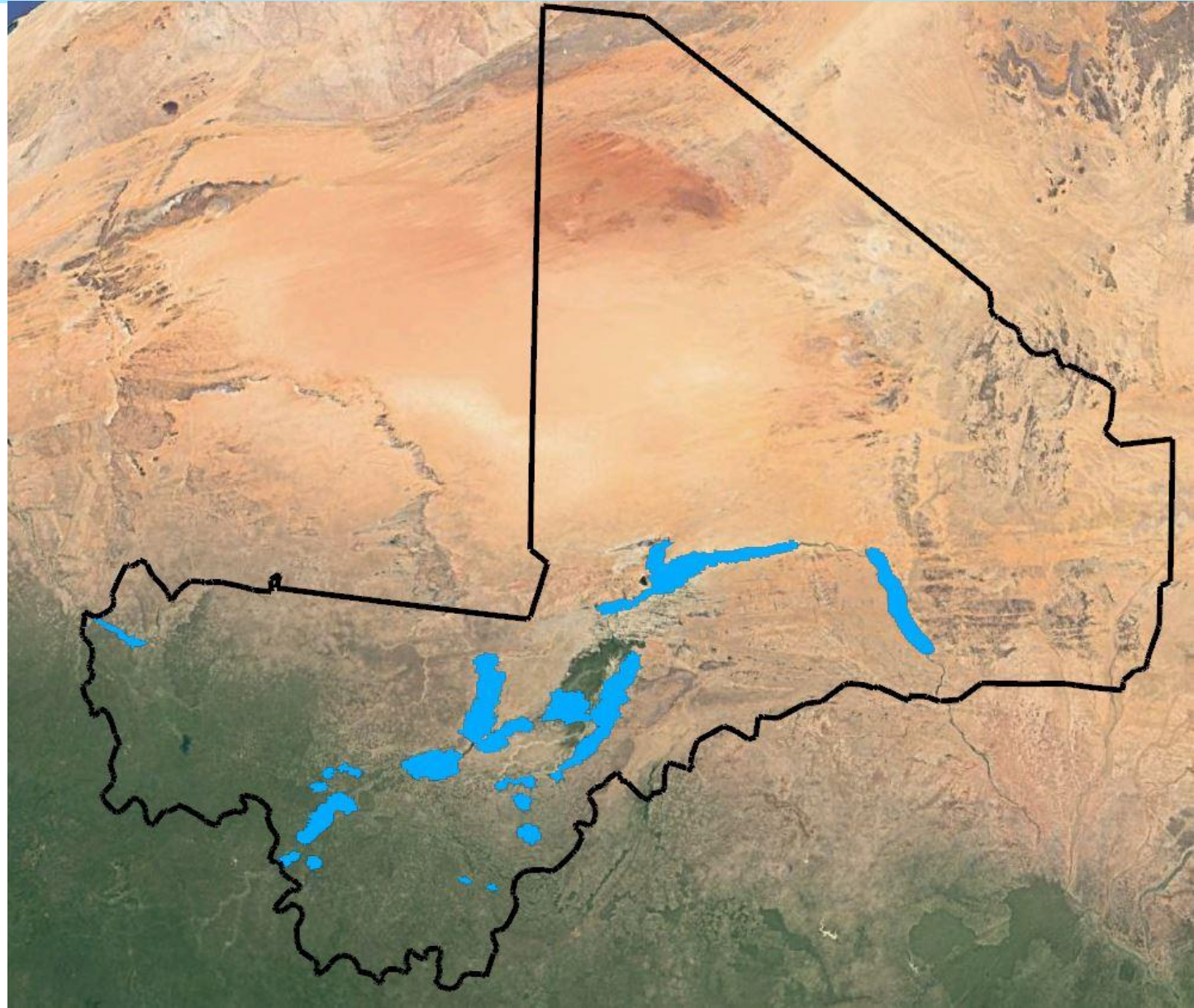
**TOOL FLEXIBILITY:** beyond the ready-to-use results, freedom of final decision.



# MALI

## 32

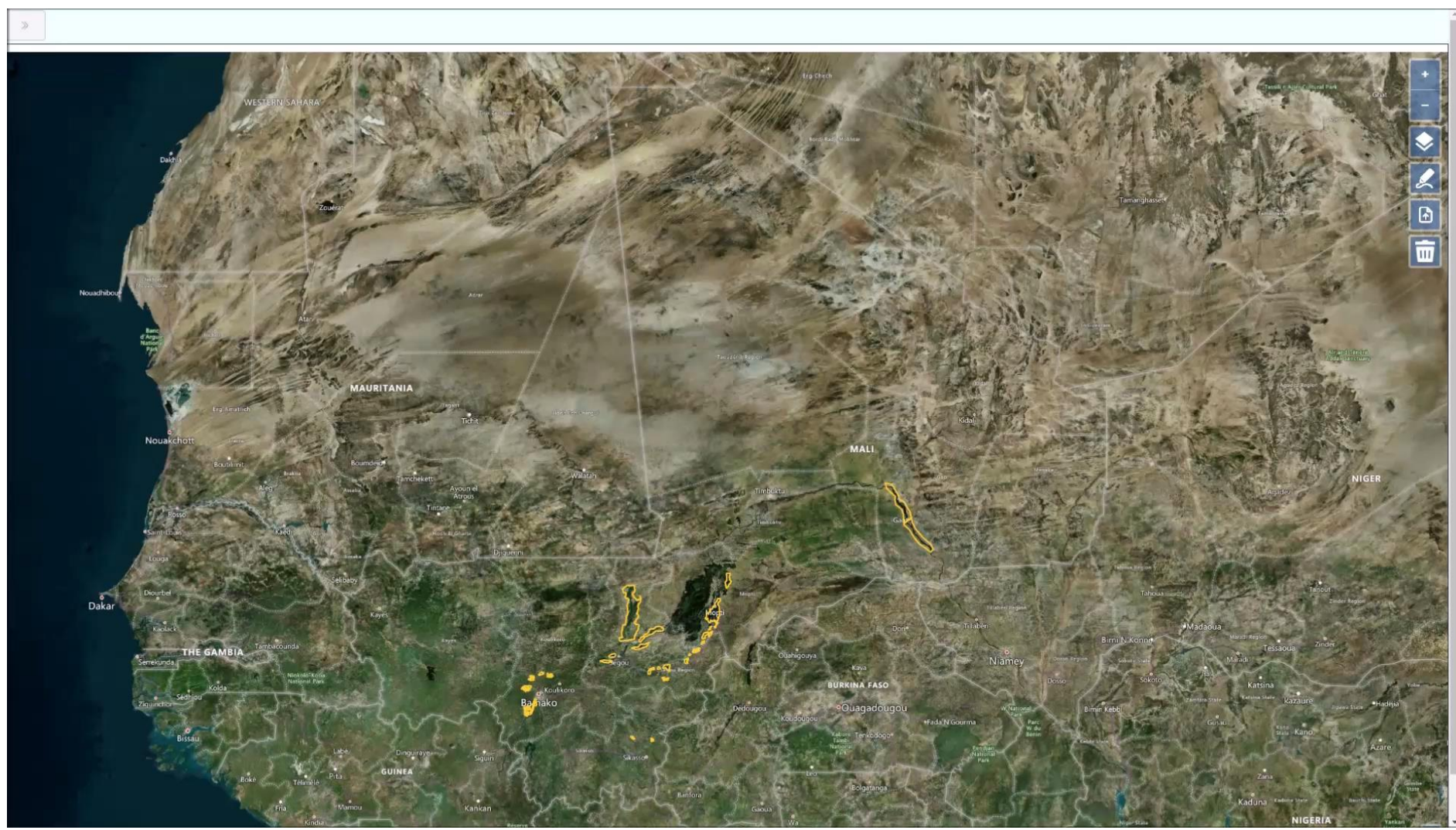
### Irrigation schemes



*United Nations Geospatial. 2020. Map geodata [shapefiles]. New York, USA, United Nations, modified by the author. The boundaries and names shown and the designations used on these map(s) do not imply the expression of any opinion whatsoever on the part of FAO concerning the legal status of any country, territory, city or area or of its authorities, or concerning the delimitation of its frontiers and boundaries.*



# VIDEO



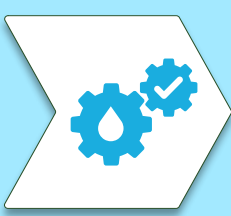
United Nations Geospatial. 2020. Map geodata [shapefiles]. New York, USA, United Nations, modified by the author. The boundaries and names shown and the designations used on these map(s) do not imply the expression of any opinion whatsoever on the part of FAO concerning the legal status of any country, territory, city or area or of its authorities, or concerning the delimitation of its frontiers and boundaries. Dashed lines on maps represent approximate border lines for which there may not yet be full agreement. Final boundary between the Sudan and South Sudan has not yet been determined. Final status of the Abyei area is not yet determined.



# RESULTS INTERPRETATION

**TOOL FLEXIBILITY:** beyond the ready-to-use results, freedom of final decision.

**STRATEGIC DECISION:** planning the inclusion of outstanding scheme performance



# NIGER

## 8

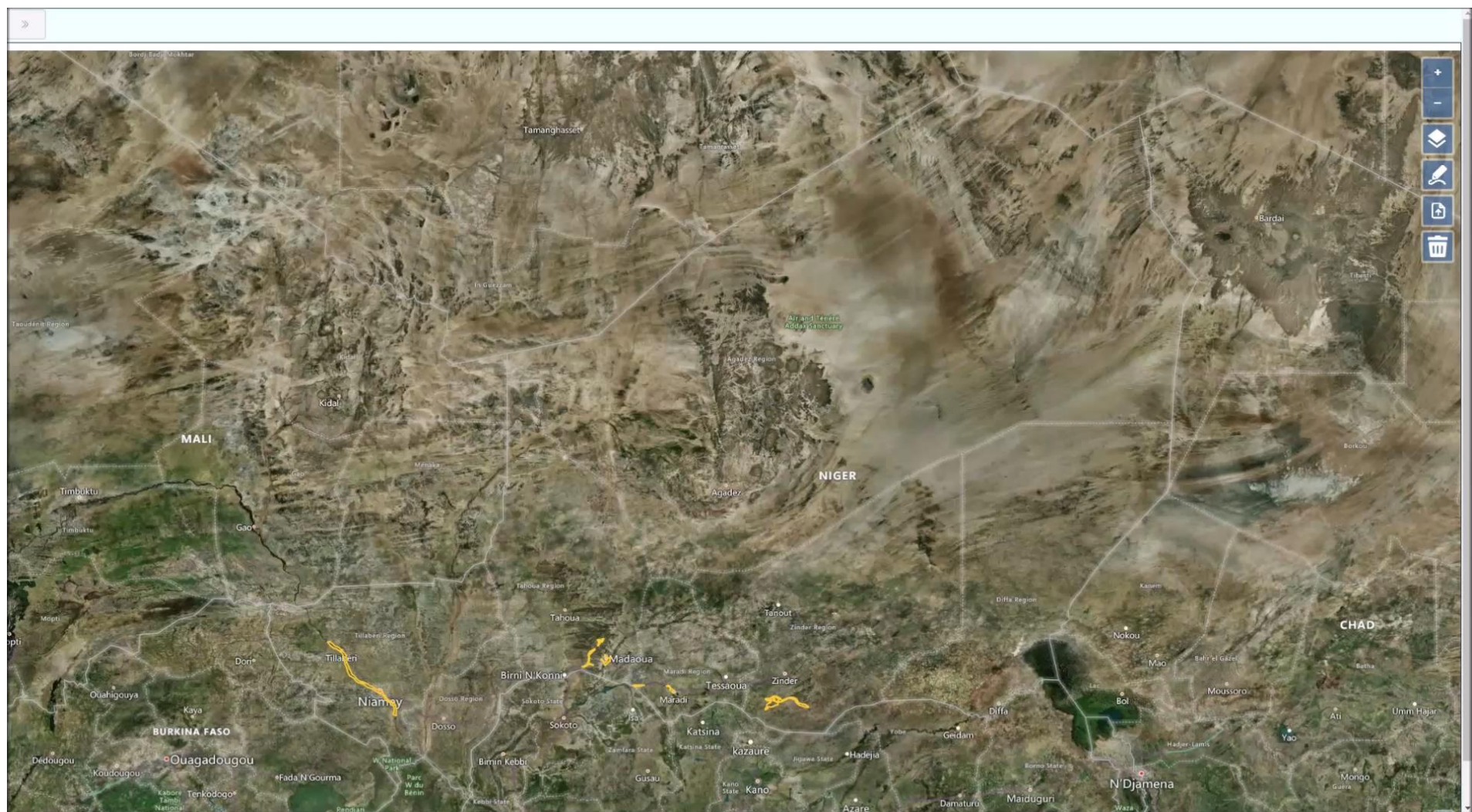
### Irrigation schemes



*United Nations Geospatial. 2020. Map geodata [shapefiles]. New York, USA, United Nations, modified by the author. The boundaries and names shown and the designations used on these map(s) do not imply the expression of any opinion whatsoever on the part of FAO concerning the legal status of any country, territory, city or area or of its authorities, or concerning the delimitation of its frontiers and boundaries.*



# VIDEO



United Nations Geospatial. 2020. Map geodata [shapefiles]. New York, USA, United Nations, modified by the author. The boundaries and names shown and the designations used on these map(s) do not imply the expression of any opinion whatsoever on the part of FAO concerning the legal status of any country, territory, city or area or of its authorities, or concerning the delimitation of its frontiers and boundaries. Dashed lines on maps represent approximate border lines for which there may not yet be full agreement. Final boundary between the Sudan and South Sudan has not yet been determined. Final status of the Abyei area is not yet determined.

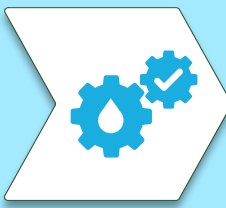


# RESULTS INTERPRETATION

**TOOL FLEXIBILITY:** beyond the ready-to-use results, freedom of final decision.

**STRATEGIC DECISION:** planning the inclusion of outstanding scheme performance.

**SCHEME DINSTINCTION:** tool usefulness regardless the number of irrigation schemes.



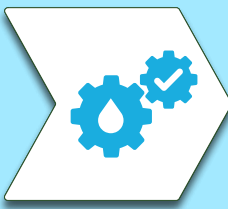
## RESULTS INTERPRETATION

**TOOL FLEXIBILITY:** beyond the ready-to-use results, freedom of final decision.

**STRATEGIC DECISION:** planning the inclusion of outstanding scheme performance.

**SCHEME DINSTINCTION:** tool usefulness regardless the number of irrigation schemes.





THANK YOU  
FOR THE ATTENTION