


Forest Foresight

Predicting deforestation

Jorn Dallinga, WWF-NL
Forest Foresight program manager




How does Forest Foresight work?



Sentinel-1
based forest
disturbance
alerts (RADD)

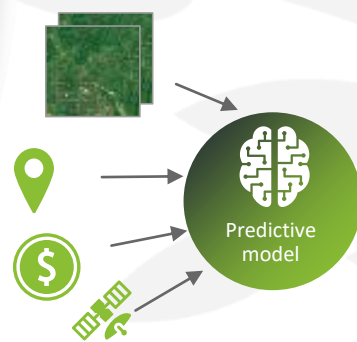
Historic
images





input data and
generate data
set with static
and dynamic
indicators

-  Topological data
-  Socio-economic data
-  Satellite data and land cover data


Machine
learning
models trained




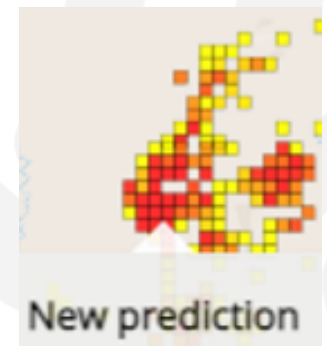

Predict hot
zones at risk

6
months
time
horizon

80%
User
accuracy

~50%
Detection
rate


Prioritize alerts
for follow-up

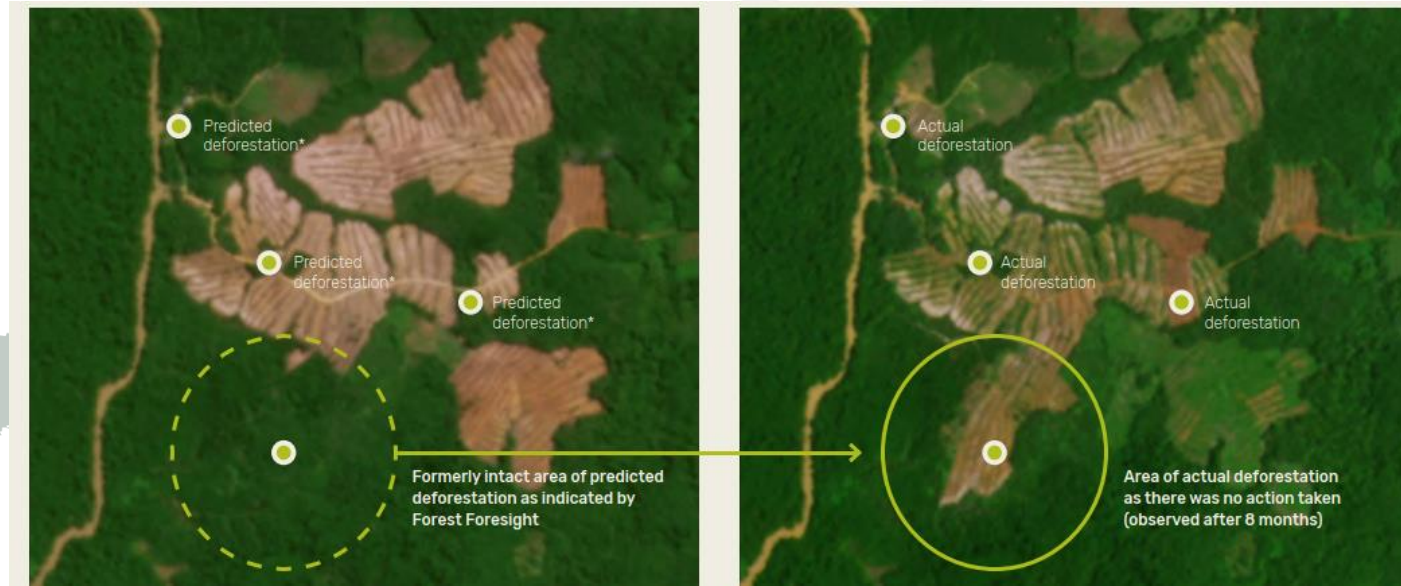


Where are we with Forest Foresight?



Next steps:

- Test value of new datasets (human movement data)
- Scale to new countries
- Ensure training/hand-over options to stakeholders
- Collaboration with WUR to improve predictive model



Thank you.

Jorn Dallinga, WWF-NL
Forest Foresight program manager

