



Food and Agriculture  
Organization of the  
United Nations



With the financial support of

**AIM4Forests**

 UK Government

# Overview of Aim4Forests

## Accelerating Innovative Monitoring for Forests

---

Marieke Sandker, FAO National Forest Monitoring  
GFOI side-event May 2023, Rome

# Outline

---

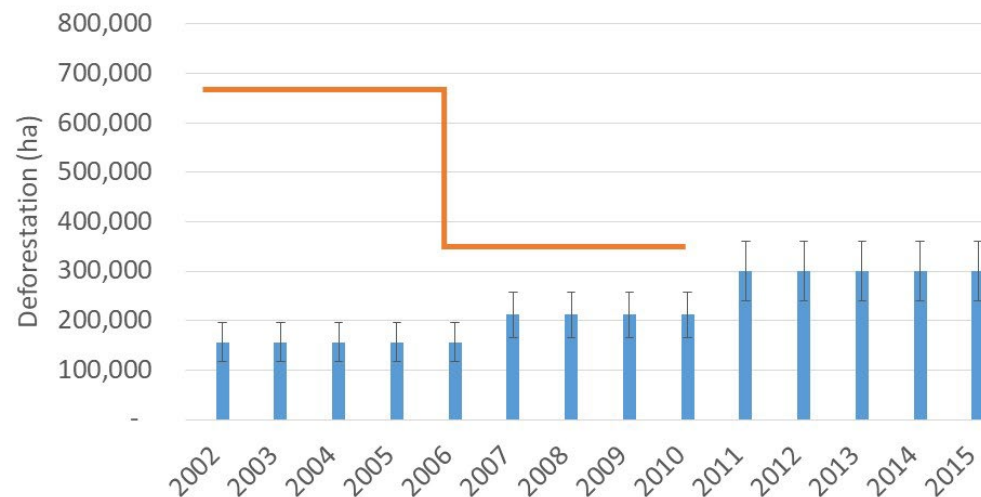
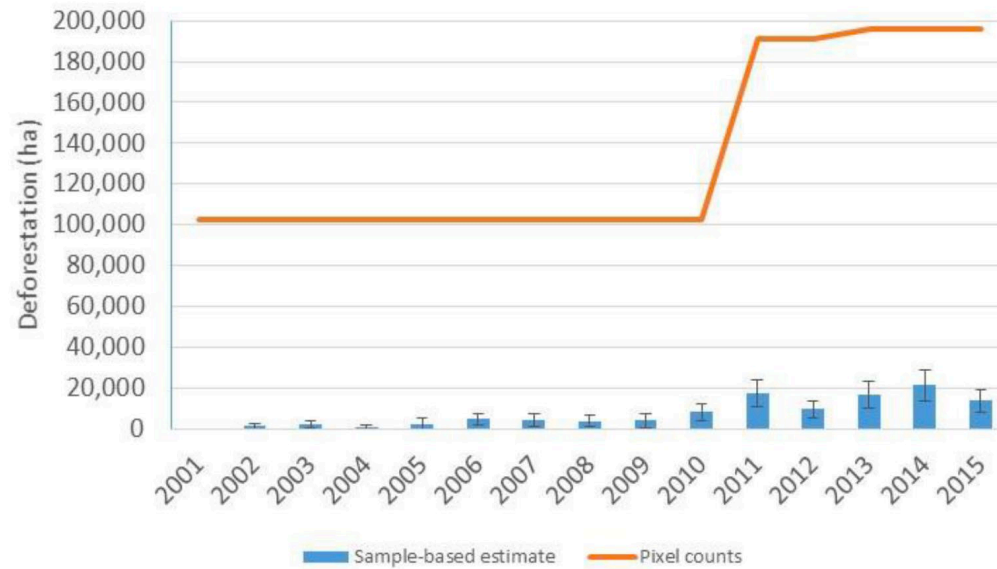
- 1. Context**
  - 2. Objectives**
  - 3. Outputs**
  - 4. Country-led planning**
  - 5. Towards high-integrity data**
  - 6. Towards broad participation**
  - 7. Towards institutional embedding**
  - 8. Summary**
- 

# Context: so much progress on MRV...



# Context: so much progress, but much remains to be done on forest

- Move towards high-integrity data
- Overcome new methodological challenges
- Broaden participation, notably of Indigenous Peoples
- Secure institutional uptake and sustainability



# Objectives

---

## **AIM4Forests Outcome:**

**20 countries with institutionalized NFMS informing domestic policy and decision-making and providing high-integrity MRV through modern monitoring technologies, novel learning approaches and innovation, enabling participation in emerging accounting standards and driving down global emissions from the forest sector and beyond, whilst strengthening AFOLU contribution in NDCs**

## **UN-REDD Programme's Output 1.4:**

**Countries enabled to measure high-quality and accurate activity data, emission factors, emissions and emission reductions with policy-relevant monitoring systems**

# Outputs

---

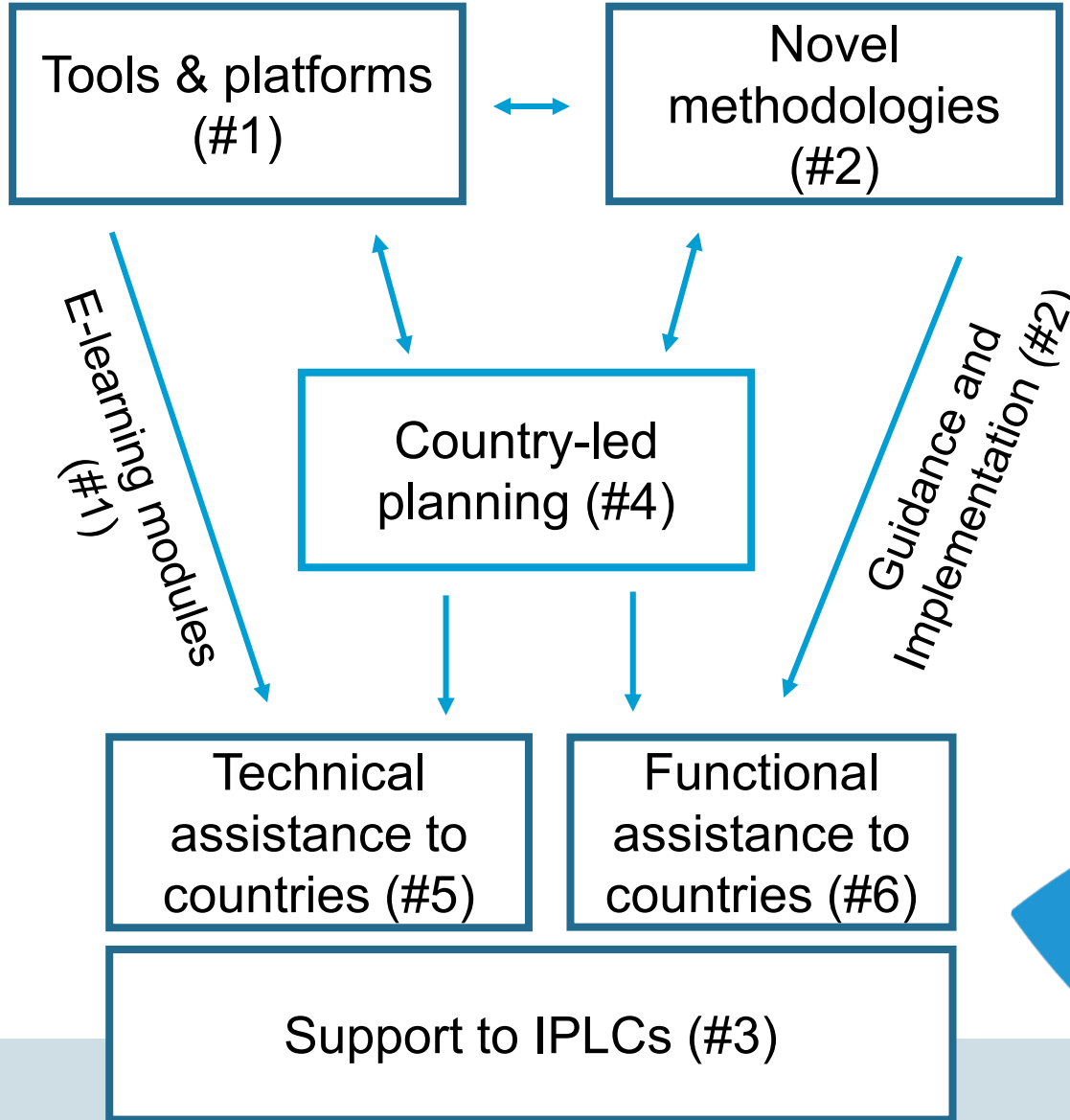
- **Output 1)** Technical innovation is advanced and tools and open-access learning programmes developed to accelerate NFMS and high-integrity MRV.
- **Output 2)** Methodological challenges are overcome to improve methodological harmonisation and enable generation of high quality forest data.
- **Output 3)** Bespoke forest and land monitoring / MRV learning materials issued to enable the participation of Indigenous Peoples and Local Communities in emerging carbon standards.
- **Output 4)** Countries are enabled to institutionalize their NFMS and associated MRV procedures through an end-to-end GFOI Country-Led Planning (CLP) process delivered in close consultation with GFOI partners
- **Output 5)** Technical gaps within forest country NFMS and MRV systems are addressed.
- **Output 6)** NFMS and MRV are embedded in national institutions, ensuring they are transparent and accessible to all users.

# Outputs

## UN-REDD Output 1.4

### Suitability of data

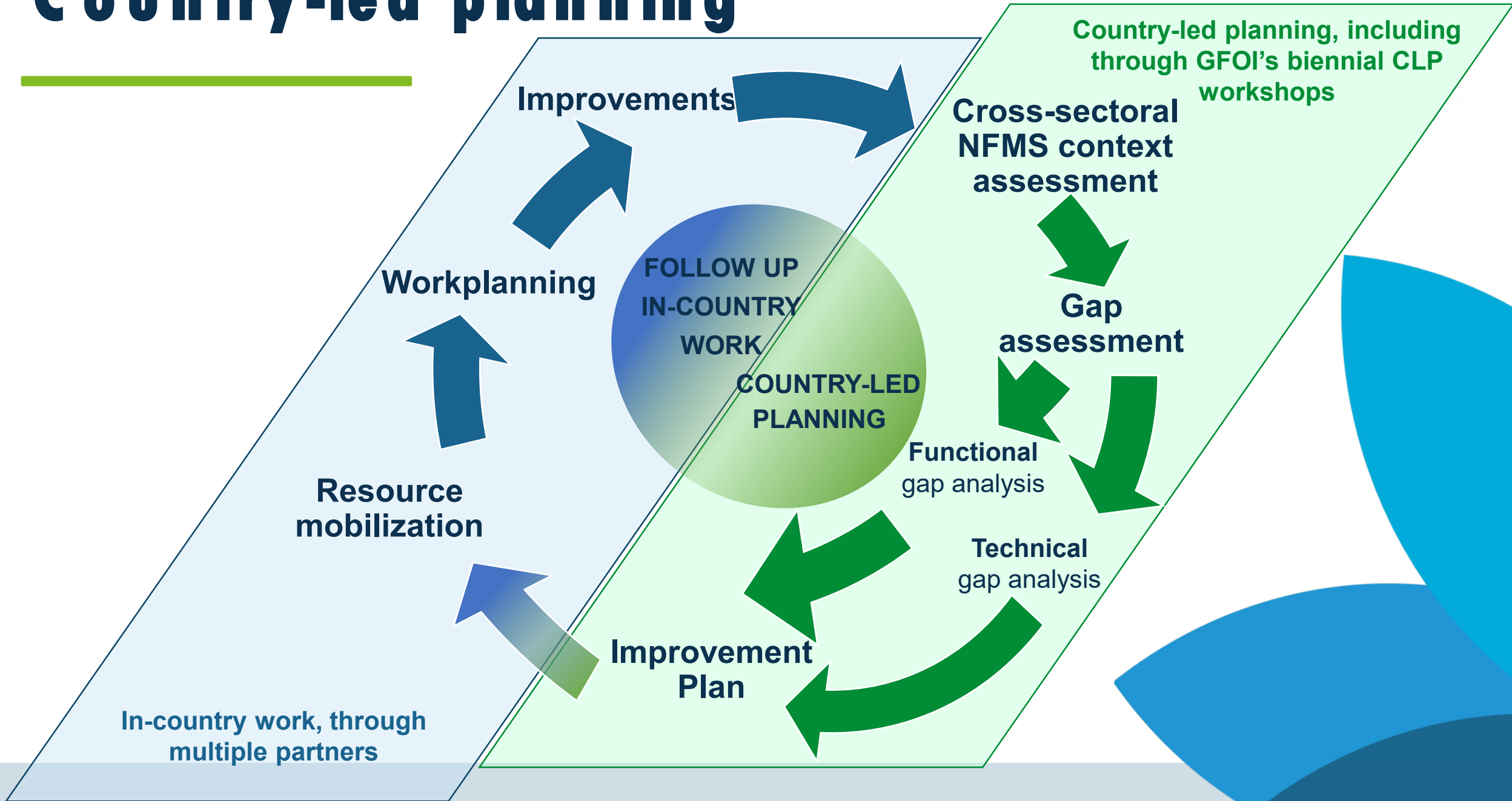
- Sustainability and institutionalization
- High-integrity, robust datasets
- Transparency and data access
- Tailored to domestic needs



### Contexts for data use

- MRV for carbon finance
- Forest monitoring to inform policy

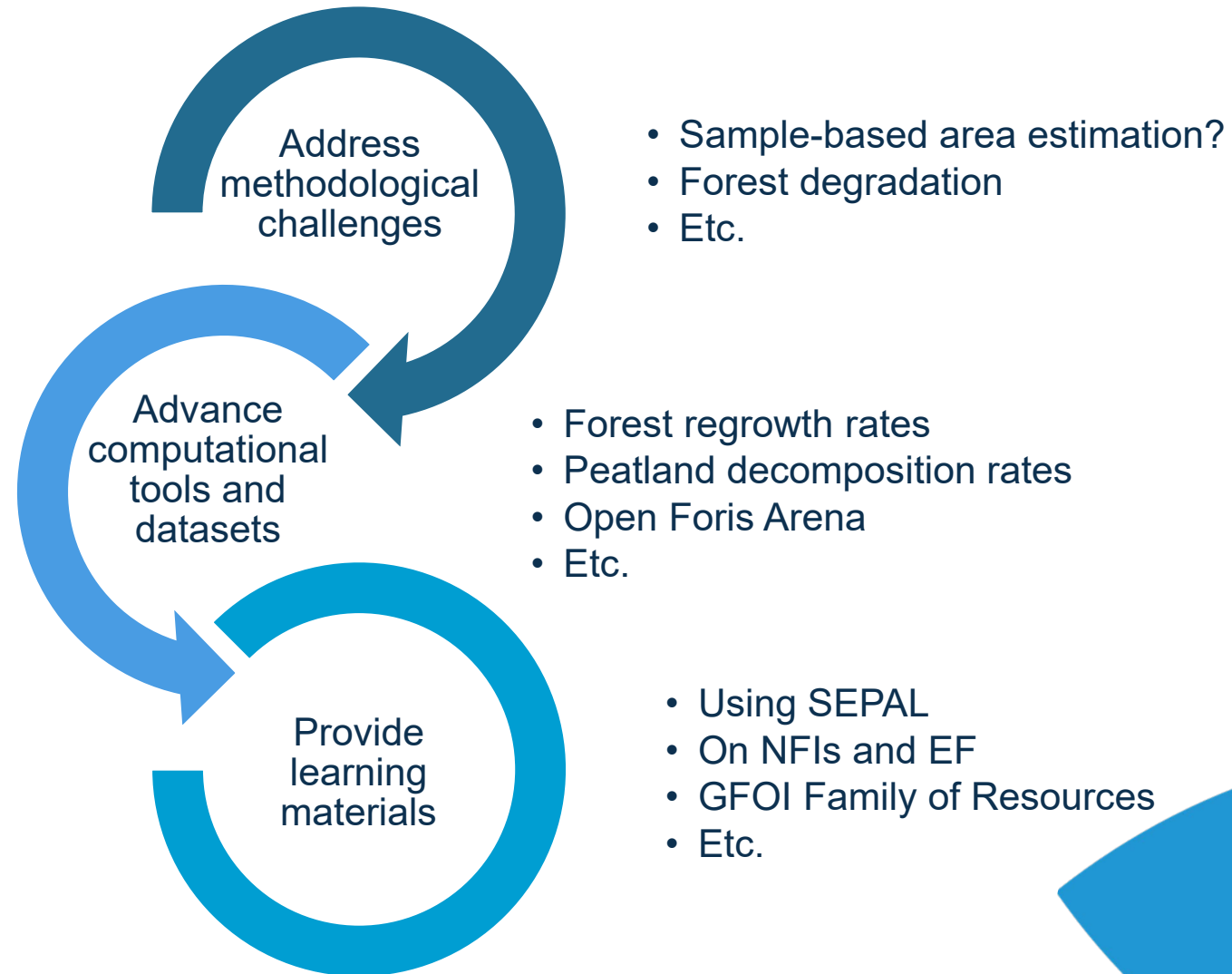
# Country-led planning





# How to progress towards high-integrity data

---



# How to broaden participation

---

## **A community of practice for Indigenous Peoples on forest monitoring and MRV**

- Bespoke technical material
  - Showcase IP stewardship role
  - Identify how forest monitoring can empower
- 

# How to secure institutional uptake?

## 1. A country-led planning process with full ownership

Make a plan



Implement it

Check on progress

## 2. Suitability of data drives institutional uptake

Technical and functional assistance

Countries use suitable data in relevant contexts

Progress towards institutionally embedding NFMS / MRV

## 3. A focus on suitable data that can develop impact

Accessible

Relevant

Impactful information is ...

Transparent, reliable and credible

Sustainable

# Summary

---

- **There is much progress on MRV, but much remains to be done**
  - **Ensure high integrity data**
  - **Overcome methodological challenges**
  - **Broaden participation, including of Indigenous Peoples**
  - **Secure institutional uptake**
- **AIM4Forests targets 20 countries over 5 years to make progress on:**
  - **Technical innovation, tools, and open-access learning programmes**
  - **Methodological challenges and guidance**
  - **Promote forest monitoring / MRV for Indigenous Peoples**
  - **Country-led planning**
  - **Technical assistance to countries**
  - **Promote use of relevant forest information and institutional uptake**

# Thank you!

---

Contact: [NFM@fao.org](mailto:NFM@fao.org)

Join the Platform  
[www.sepal.io](http://www.sepal.io)

Browse the Open Foris suite of tools  
<http://openforis.org/>