



## Monitoring period land degradation status in Uruguay: Soil organic carbon sub-indicator

An assessment of land degradation was carried out following the UNCCD's Good Practice Guidance (GPG) version 2 to monitor the monitoring period status (2015 - 2020) of the soil organic carbon sub-indicator of SDG Indicator 15.3.1 (Proportion of land that is degraded over total land area) to locate the degraded areas in Uruguay. ESA CCI Land cover map and soil data from ISRIC were used to derive this sub-indicator.

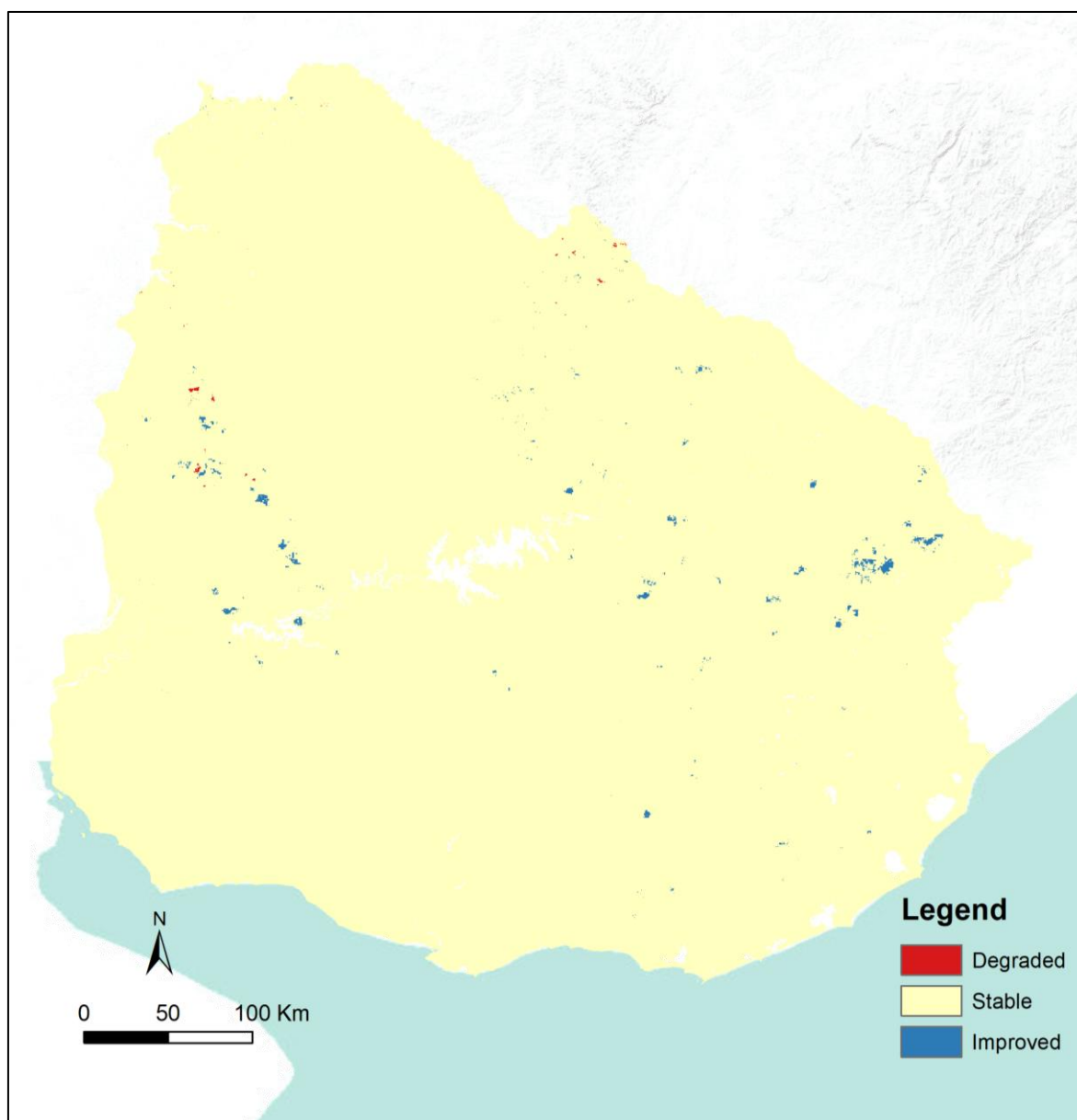


Figure 1: Soil organic carbon sub-indicator in the monitoring period.<sup>1</sup>

Prepared by Matias Bosio, Ana Alvarez, Amit Ghosh, Rashed Jalal, and Matieu Henry in support to the project Alignment of National Action Program with the UNCCD 10-Years Strategy and reporting process (EP/URU/036/UEP), Food and Agriculture Organization of United Nations, Rome, Italy.

<sup>1</sup> [GAUL 2015](#). The boundaries and names shown, and the designations used on these map(s) do not express any opinion whatsoever on the part of FAO concerning the legal status of any country, territory, city or area or of its authorities, or concerning the delimitation of its frontiers and boundaries. Dashed lines on maps represent approximate border lines for which there may not yet be full agreement.