



2020 land degradation status in Uruguay

An assessment of land degradation was carried out following the UNCCD's Good Practice Guidance (GPG) version 2 to monitor and locate the degraded areas in Uruguay for the year 2020. Land degradation maps for the baseline (2000 - 2015) and monitoring (2015 - 2020) were prepared using SEPAL 15.3.1 module. The MODIS NDVI and ESA CCI land cover data were used. The final land degradation map was prepared by combining the two maps following the methodology proposed in the GPG.

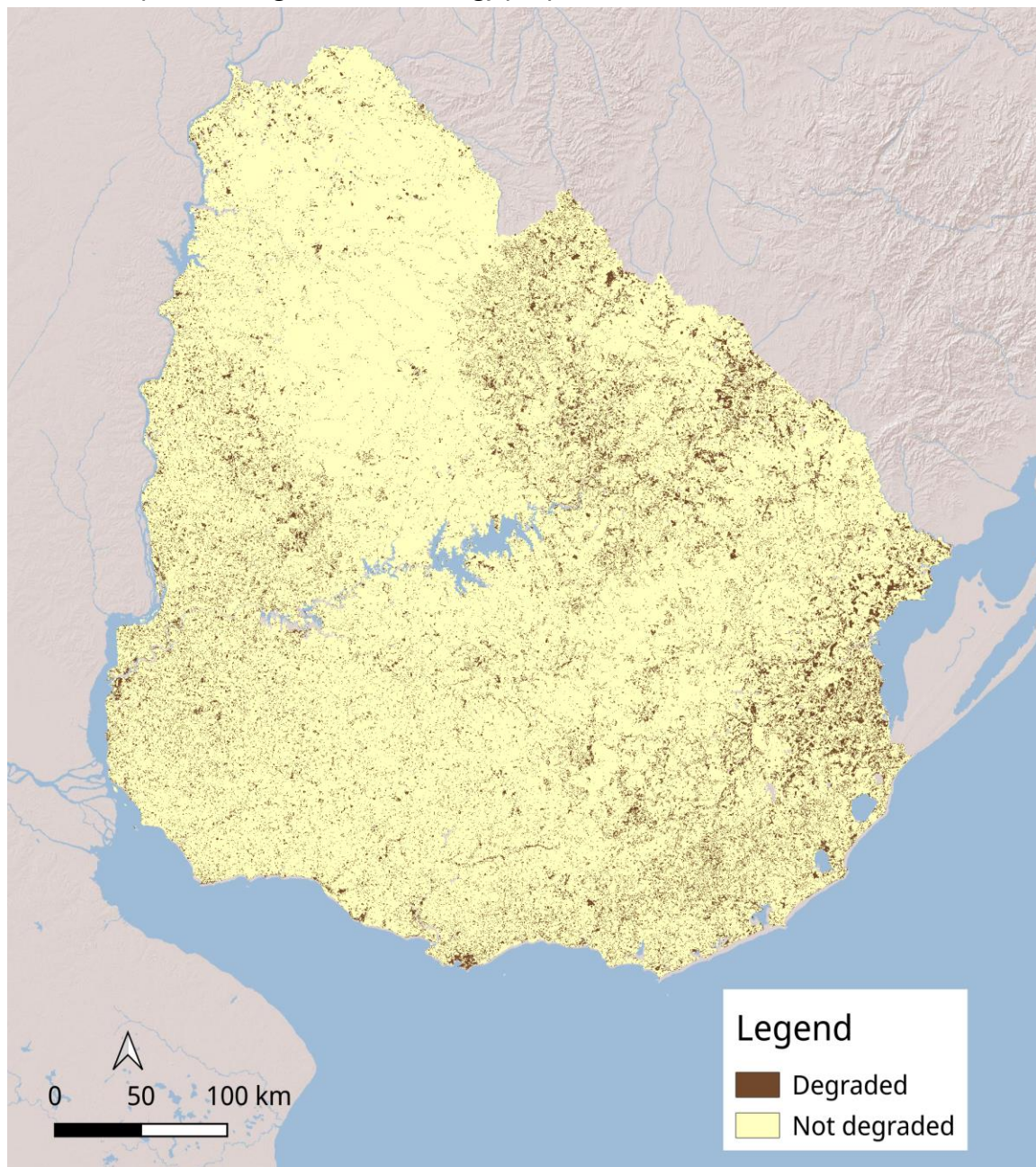


Figure 1: 2020 land degradation status in Uruguay.¹

Prepared by Matias Bosio, Ana Alvarez, Amit Ghosh, Rashed Jalal, and Matieu Henry in support to the project Alignment of National Action Program with the UNCCD 10-Years Strategy and reporting process (EP/URU/036/UEP), Food and Agriculture Organization of United Nations, Rome, Italy.

¹ [GAUL 2015](#). The boundaries and names shown, and the designations used on these map(s) do not express any opinion whatsoever on the part of FAO concerning the legal status of any country, territory, city or area or of its authorities, or concerning the delimitation of its frontiers and boundaries. Dashed lines on maps represent approximate border lines for which there may not yet be full agreement.

