

Overview of Mozambique's involvement with the GFOR

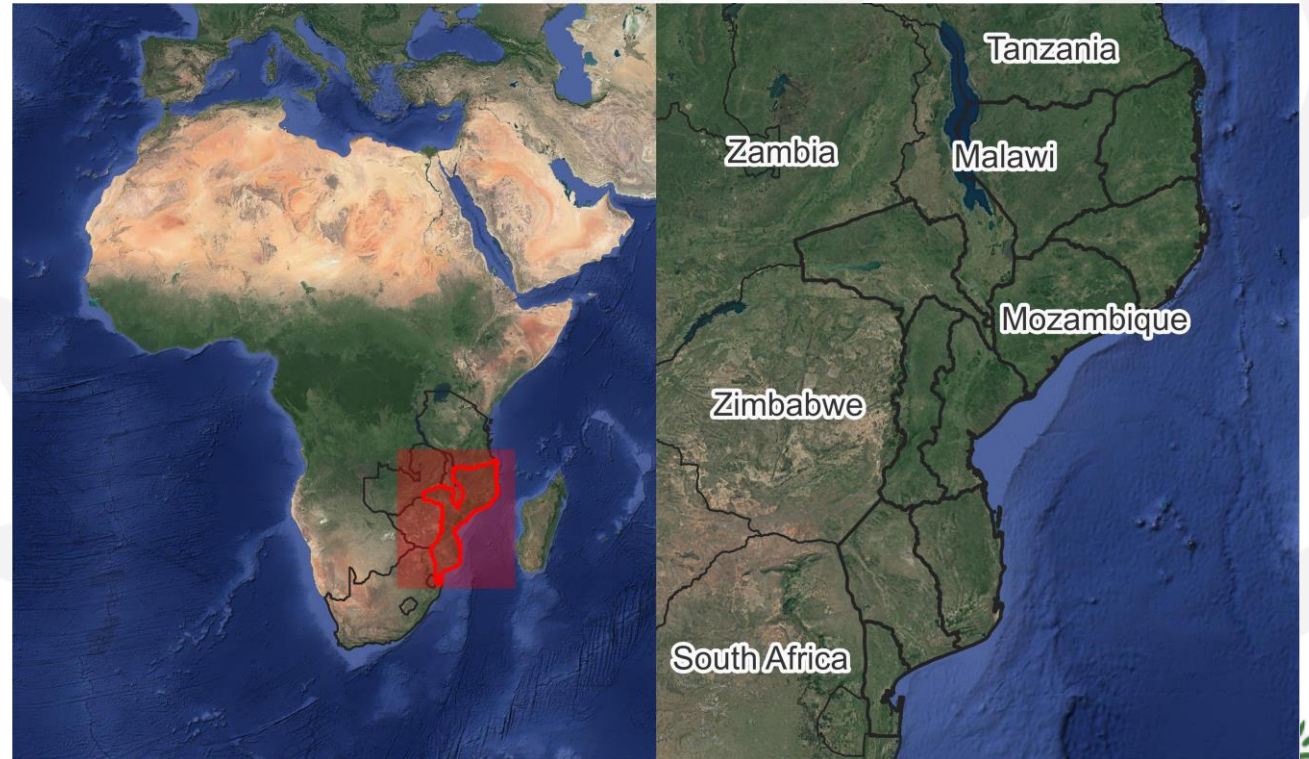
Muri Soares – MRV Unit



Mozambique

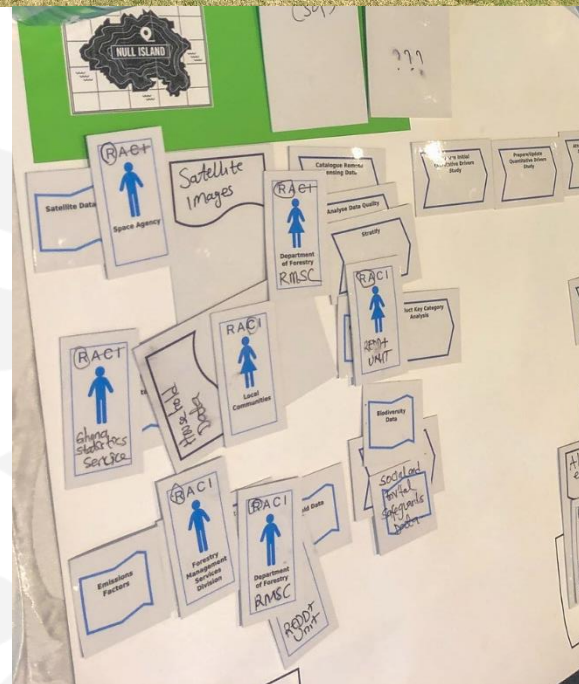
- Country Area: 80 million ha
- Population: 33 million

- Forest area: 32 million ha
- Tropical dry forests (miombo)
- Among the highest deforestation of the continent



Involvement with GFOI

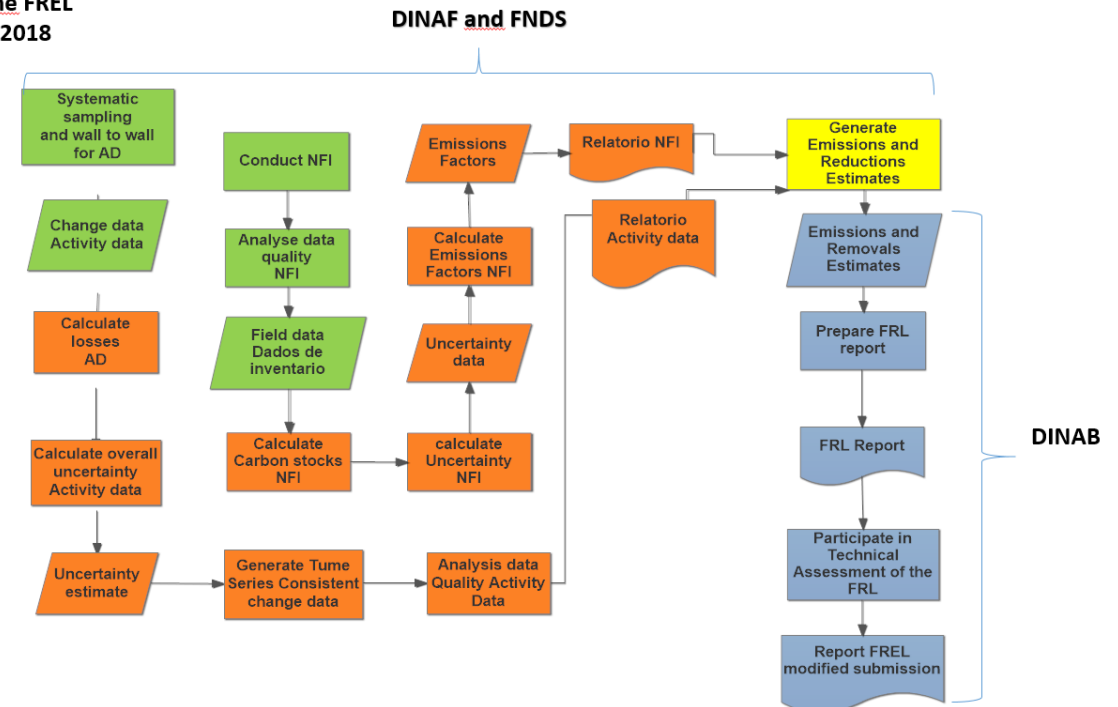
- MGD as the basic reference
- 2017/2018 - REDD Compass MRV action plan
- 2019:
 - Hosted GFOI Plenary
 - Country needs assessment for NFMS
- 2021 - Presented at GFOI Plenary



Country needs assessment

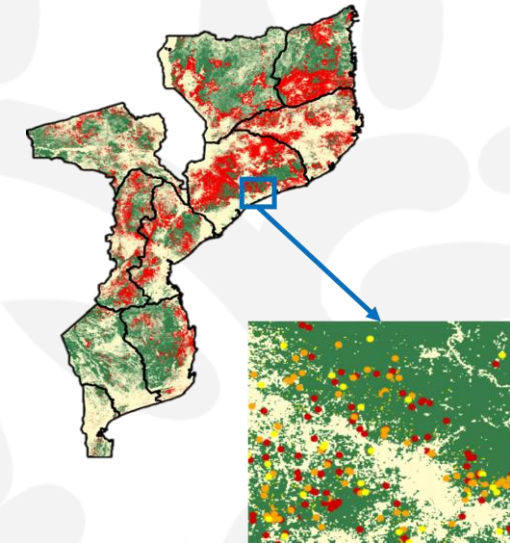
- Conducted in 2019
- Allowed visualization of the whole process
- Highlighted strengths and weaknesses of Mozambique's MRV system
 - Improve technical capacities
 - Institutional arrangements

Process for the FREL submitted in 2018



MRV System

- Many improvements since CNA
 - Production of SOPs
 - Annual mapping methodology
 - Forest degradation methodology
 - Preparation of REDD+ Technical Annex to the BUR
- Institutional arrangement still remains a challenge



Contribution to OpenMRV

- Involved in the conception of OpenMRV
- Submitted SOPs:
 - Sample based area estimation
 - Map production
 - Sampling design
 - Response design
 - Area estimation
 - GHG Estimation
 - Activity Data collection



Visit us: <http://www.fnds.gov.mz/mrv/>



MRV
UNIDADE DE MONITORIA, RELATÓRIO
E VERIFICAÇÃO DO REDD+

MRV

ACTIVIDADES

GALERIA

DOCUMENTOS

PLATAFORMA GEOESPACIAL

LINKS ÚTEIS

FNDS

SUSTENTA

Open MRV

Unidade de MRV participa da Conferência Regional sobre o Maneio Sustentável e Integrado da Floresta do Miombo



Reuniões & Workshops



Trabalhos de Campo



Estudos



Capacitações



Trocas de Experiências