



Food and Agriculture
Organization of the
United Nations



Global Forest Observations Initiative

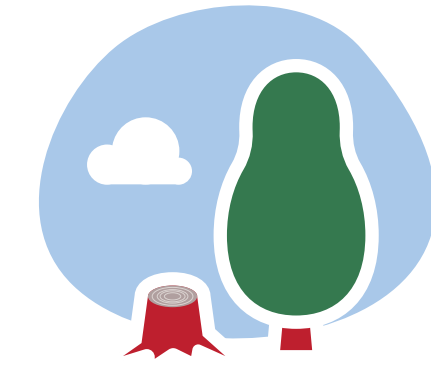
a partnership for tracking forests for climate action

WHY IS FOREST MONITORING IMPORTANT FOR COUNTRIES?

Better forest monitoring is key to better forest management. With a growing demand for better information to enable successful decision making and action, many developing countries are establishing national forest monitoring systems and associated emissions measurement, reporting and verification (MRV) procedures to:



track progress towards their **nationally determined contributions** under the Paris Climate Change Agreement;



reduce emissions from deforestation, forest degradation and related activities, commonly known as **REDD+**;



contribute to achieving the **Sustainable Development Goals**; and



enable **national policies and programmes** that improve sustainable land use.

WHAT IS THE GLOBAL FOREST OBSERVATIONS INITIATIVE (GFOI)?

It is a global voluntary partnership that coordinates international support in forest monitoring to help developing countries address **their international reporting requirements and national information needs**.



650
activities
worldwide



70
international
partners



Guidance used
regularly in
50 countries

WHO ARE THE PARTNERS?

Countries and international organizations that support the strengthening of forest MRV capacities in developing countries are the partners.



GFOI is open to new partners!



Lead partners include:

- the governments of Australia, Germany, Norway, the United Kingdom and the United States of America;
- the Committee on Earth Observation Satellites (CEOS);
- the European Space Agency (ESA);
- the Food and Agriculture Organization of the United Nations (FAO); and
- the World Bank.

Other contributing partners are:

- the Intergovernmental Panel on Climate Change (IPCC);
- the United Nations Framework Convention on Climate Change (UNFCCC); and
- academia, non-profit governmental organizations, individual experts and the private sector.

GFOI is a flagship initiative of the Group on Earth Observations (GEO).
The GFOI Office at FAO provides secretariat services.

HOW DOES THE GFOI WORK?



Method and guidance documentation

User-friendly methods and guidance materials address UNFCCC requirements for REDD+ and comply with IPCC guidance.



Capacity building

Joint capacity building effectively transfers knowledge and technology.



Research and development

Knowledge gaps are addressed to foster progress and continuous improvement in forest monitoring.



Data coordination

Countries are supported with access to data and tools for forest monitoring.

KEY RESULTS

The GFOI coordinates partners' **work in more than 60** developing countries across Asia, Africa and Latin America to significantly advance forest monitoring and MRV capacity.

The GFOI works with space agencies to help make available and expand **wall-to-wall coverage of the world's forests from multiple satellite sensors**.

The GFOI improves the ability of countries to **access and use space data through training on tools and platforms** such as Collect Earth and SEPAL.

The GFOI publishes and disseminates **user-friendly methods and guidance** materials for the structured development of MRV procedures for REDD+.

WANT TO KNOW MORE OR JOIN?



GFOI-Office@fao.org



www.fao.org/gfoi

Lead Partners



The GFOI is a flagship of



This poster has been produced by the GFOI Office, hosted by FAO, on behalf of all GFOI partners. The GFOI Office is financed by the Governments of Norway and the United Kingdom.