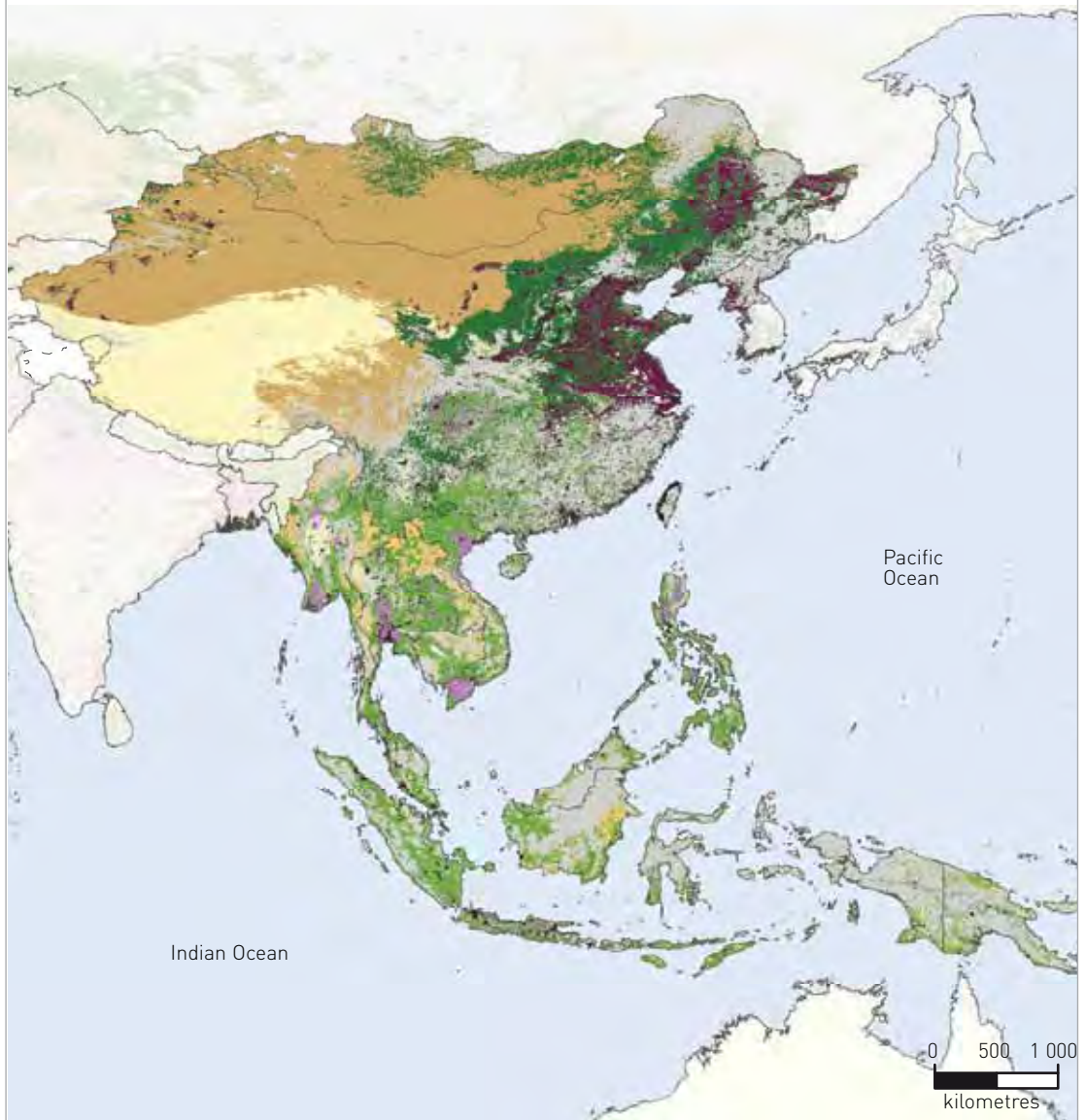


APPENDIX **B**

LIVESTOCK PRODUCTION SYSTEMS AND ESTIMATED NUMBERS
OF RURAL POOR LIVESTOCK KEEPERS IN THE EAST ASIA
AND PACIFIC (EAP) REGION

B LIVESTOCK PRODUCTION SYSTEMS (VERSION 5)



- | | | | |
|-----|-----|-----|-------------|
| LGA | MRA | MIA | Urban areas |
| LGH | MRH | MIH | Other |
| LGT | MRT | MIT | |

TABLE B RURAL POOR LIVESTOCK KEEPERS ESTIMATED BY COUNTRY AND LIVESTOCK PRODUCTION SYSTEM (VERSION 5, NOT DISTINGUISHING HYPER-ARID AREAS). POVERTY RATES ARE FROM WORLD BANK (2011)

Country	LGA	LGH	LGT	MRA	MRH	MRT	MIA	MIH	MIT	Other	Total
Cambodia											
National rural poverty	692	59 518	0	62	2 015 500	0	0	106 162	0	121 355	2 303 289
Internat. poverty rate \$1.25	503	46 695	0	48	1 498 380	0	0	78 863	0	88 967	1 713 456
Internat. poverty rate \$2.00	1 127	92 596	0	103	3 356 090	0	0	176 605	0	197 632	3 824 153
China											
National rural poverty	12 893	213	266 109	135 882	1 633 650	2 813 520	9 869	289 433	864 714	1 319 040	7 345 323
Internat. poverty rate \$1.25	295 915	424	2 632 770	818 225	10 277 700	17 554 300	56 081	1 702 660	5 418 340	8 005 690	46 762 105
Internat. poverty rate \$2.00	685 734	813	5 754 820	1 878 610	23 465 700	40 177 900	126 956	3 882 650	12 303 600	18 199 900	106 476 683
Democratic People's Republic of Korea											
National rural poverty	896	0	108	688	0	67 537	451	0	73 856	147 237	290 773
Internat. poverty rate \$1.25	0	0	0	0	0	9	0	0	0	19	28
Internat. poverty rate \$2.00	0	0	0	0	0	19	0	0	0	44	63
Indonesia											
National rural poverty	2 738	86 482	1 740	34 736	8 915 510	22 685	585	1 476 360	21 742	1 333 390	12 096 968
Internat. poverty rate \$1.25	2 960	93 714	1 879	37 611	9 652 970	242 184	648	1 599 170	23 551	1 460 530	13 115 217
Internat. poverty rate \$2.00	7 361	239 397	4 885	94 705	24 273 300	609 486	1 636	4 009 110	59 067	3 683 960	32 982 907
Lao People's Democratic Republic											
National rural poverty	205	310 381	8 844	38	616 925	3 000	0	26 618	0	90 986	1 056 997
Internat. poverty rate \$1.25	205	329 801	9 474	46	660 858	3 417	0	29 117	0	97 607	1 130 525
Internat. poverty rate \$2.00	331	560 565	16 498	69	1 158 150	5 831	0	50 363	0	154 507	1 946 314
Malaysia											
National rural poverty	459	22 097	92	1 308	421 564	279	36	26 991	0	94 616	567 442
Internat. poverty rate \$1.25	69	794	1	165	59 843	24	5	3 193	0	3 744	67 838
Internat. poverty rate \$2.00	248	12 352	55	661	217 771	145	19	13 875	0	42 637	287 763
Mongolia											
National rural poverty	0	0	477 089	0	0	130 952	0	0	4	3 391	611 436
Internat. poverty rate \$1.25	0	0	16 394	0	0	7 055	0	0	2	1 675	25 126
Internat. poverty rate \$2.00	0	0	9 448	0	0	4 426	0	0	2	1 619	15 495

(Continued)

TABLE B RURAL POOR LIVESTOCK KEEPERS ESTIMATED BY COUNTRY AND LIVESTOCK PRODUCTION SYSTEM (VERSION 5, NOT DISTINGUISHING HYPER-ARID AREAS). POVERTY RATES ARE FROM WORLD BANK (2011) (Continued)

Country	LGA	LGH	LGT	MRA	MRH	MRT	MIA	MIH	MIT	Other	Total
Myanmar											
National rural poverty	7 798	190 245	22 270	1 106 720	2 343 750	45 923	121 395	368 949	799	468 638	4 676 487
Internat. poverty rate \$1.25	0	1 48	13	0	89	25	0	2	0	49	226
Internat. poverty rate \$2.00	2	112	25	0	208	59	0	9	0	109	524
Papua New Guinea											
National rural poverty	88	92 619	4 751	139	257 143	110 553	0	0	0	490 002	955 295
Internat. poverty rate \$1.25	74	76 273	4 048	117	212 625	94 159	0	0	0	422 663	809 959
Internat. poverty rate \$2.00	119	118 175	6 226	177	333 910	153 422	0	0	0	643 464	1 255 493
Philippines											
National rural poverty	2 057	3 066	38	26 201	6 627 550	52 648	3 088	1 014 110	368	794 393	8 523 519
Internat. poverty rate \$1.25	1 263	1 894	28	16 056	4 061 530	32 202	1 889	621 130	226	489 077	5 225 295
Internat. poverty rate \$2.00	2 507	3 916	51	32 045	8 097 070	64 329	3 761	1 237 210	449	970 110	10 411 448
Thailand											
National rural poverty	9 977	34 338	93	148 342	2 453 610	680	15 208	316 555	0	192 340	3 171 143
Internat. poverty rate \$1.25	110	65	3	23 299	365 658	109	2 870	61 442	0	18 568	472 124
Internat. poverty rate \$2.00	8 994	32 862	83	126 056	2 060 890	578	12 859	269 451	0	161 581	2 673 354
Timor-Leste											
National rural poverty	1 713	14 072	297	3 062	159 615	13 170	541	2 496	11	7 790	202 767
Internat. poverty rate \$1.25	2 289	17 621	369	4 072	211 630	17 439	720	3 420	14	10 675	268 249
Internat. poverty rate \$2.00	3 350	27 319	565	5 983	310 032	25 375	1 069	5 212	21	16 008	394 934
Viet Nam											
National rural poverty	2 500	269 019	15 644	18 991	5 363 000	82 222	3 903	2 930 350	139	538 861	9 224 629
Internat. poverty rate \$1.25	248	30 188	1 918	1 918	509 674	7 996	379	286 052	18	54 936	893 327
Internat. poverty rate \$2.00	3 290	360 429	21 005	25 311	7 088 350	108 917	5 158	3 876 860	182	708 641	12 198 143

Developing regions are based on 2010 World Bank country classification (World Bank, 2010), listed in Appendix A.