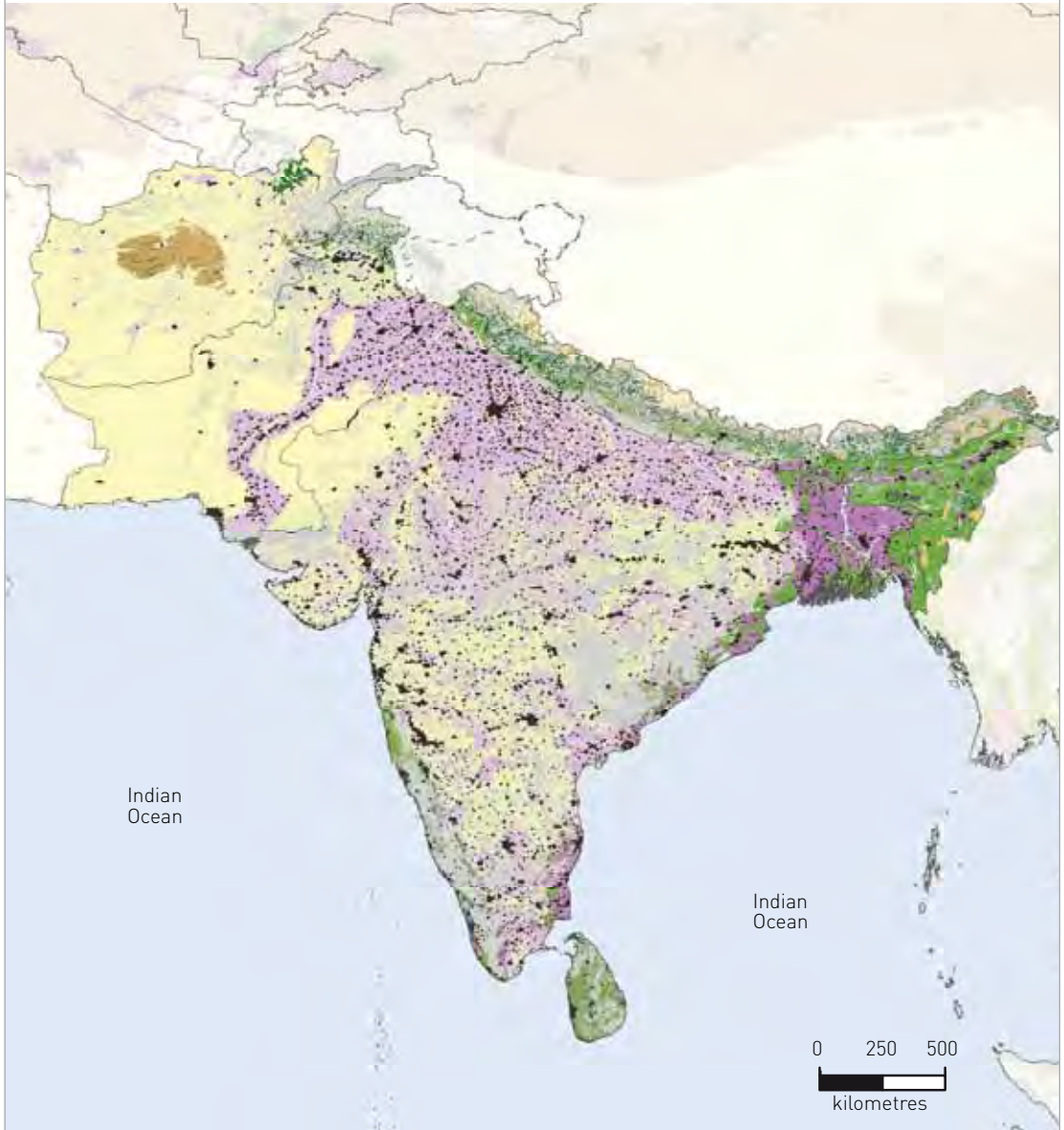


APPENDIX **F**

LIVESTOCK PRODUCTION SYSTEMS AND ESTIMATED NUMBERS
OF RURAL POOR LIVESTOCK KEEPERS IN THE SOUTH ASIA (SA) REGION

F LIVESTOCK PRODUCTION SYSTEMS (VERSION 5)



- | | | | |
|-----|-----|-----|-------------|
| LGA | LRA | MIA | Urban areas |
| LGH | MRH | MIH | Other |
| LGT | MRT | MIT | |

TABLE F RURAL POOR LIVESTOCK KEEPERS ESTIMATED BY COUNTRY AND LIVESTOCK PRODUCTION SYSTEM (VERSION 5, NOT DISTINGUISHING HYPER-ARID AREAS). POVERTY RATES ARE FROM WORLD BANK (2011)

Country	LGA	LGH	LGT	MRA	MRH	MRT	MIA	MIH	MIT	Other	Total
Afghanistan											
National rural poverty	3 326 830	0	386 318	1 686 040	0	252 100	300 758	0	14 525	258 043	6 224 614
Internat. poverty rate \$1.25	481	0	0	144	0	95	1	0	0	218	939
Internat. poverty rate \$2.00	1 132	0	0	385	0	247	2	0	0	567	2 333
Bangladesh											
National rural poverty	17 096	168	0	180 391	7 158 170	0	44 168	9 379 650	0	256 846	17 036 489
Internat. poverty rate \$1.25	20 402	193	0	209 545	8 165 970	0	50 429	10 639 800	0	297 253	19 383 592
Internat. poverty rate \$2.00	33 412	311	0	343 172	13 378 300	0	82 552	17 424 200	0	488 857	31 748 804
Bhutan											
National rural poverty	3 392	14	747	130	20 753	26 839	0	1 135	496	17 896	71 402
Internat. poverty rate \$1.25	2 281	13	675	59	16 440	20 705	0	973	424	15 385	56 955
Internat. poverty rate \$2.00	4 907	16	922	202	32 208	38 845	0	1 738	860	31 619	111 317
India											
National rural poverty	1 126 520	23 187	18 682	48 403 100	13 804 400	763 399	27 555 500	4 495 260	13 157	10 632 300	106 835 505
Internat. poverty rate \$1.25	1 544 400	30 769	25 122	64 589 400	18 409 200	1 019 620	36 772 200	5 995 340	17 596	14 183 300	142 586 947
Internat. poverty rate \$2.00	2 773 990	55 366	44 749	117 310 000	33 417 400	1 850 880	66 767 000	10 883 700	32 077	25 748 300	258 883 462
Nepal											
National rural poverty	63 883	36	19 886	241 639	896 470	322 943	382 680	263 025	22 685	906 625	3 119 872
Internat. poverty rate \$1.25	97 806	49	31 593	386 606	1 428 590	512 388	611 848	421 650	36 178	1 453 080	4 979 788
Internat. poverty rate \$2.00	136 513	75	44 747	546 024	2 012 180	722 527	858 905	591 685	50 889	2 040 810	7 004 355
Pakistan											
National rural poverty	5 183 770	0	0	4 514 120	57 521	545 250	5 612 130	6 751	12 521	1 227 370	17 159 433
Internat. poverty rate \$1.25	3 283 390	0	0	2 838 690	36 184	341 145	3 561 930	4 265	7 886	773 046	10 826 536
Internat. poverty rate \$2.00	8 699 240	0	0	7 602 320	96 653	915 186	9 426 130	11 401	21 036	2 076 800	28 848 766
Sri Lanka											
National rural poverty	458	0	0	3 115	527 781	18 182	48	57 738	346	124 974	732 642
Internat. poverty rate \$1.25	704	0	0	4 977	829 558	28 452	76	90 105	554	192 439	1 146 865
Internat. poverty rate \$2.00	2 006	0	0	14 040	2 351 560	81 017	216	255 414	1 576	546 647	3 252 476

Developing regions are based on 2010 World Bank country classification (World Bank, 2010), listed in Appendix A.