



Food and Agriculture Organization
of the United Nations

THINKING BEYOND
LIVESTOCK
TODAY FOR
THE **PEOPLE**
OF TOMORROW

ASL
2050



ASL 2050

AFRICA SUSTAINABLE LIVESTOCK 2050

Is a forward-looking initiative to:

- 1 **Anticipate and predict opportunities and challenges** for society that will emerge in the coming decades due to fast-changing African livestock systems.
- 2 **Identify actions to be taken now** to tap into future opportunities and deal with the emerging challenges associated with growing and changing livestock systems.

Case study: Asia

Asian livestock development warns of the potential risks associated with a fast growing sector. Poultry consumption and production grew over 350% between 1980 and the early 2000s in Asia, and a strain of highly pathogenic avian influenza emerged in 2003. At its peak, the disease affected 63 countries in Asia, Europe and Africa, with the overall cost for Asia estimated between 5 and 10 billion US dollars.

What?

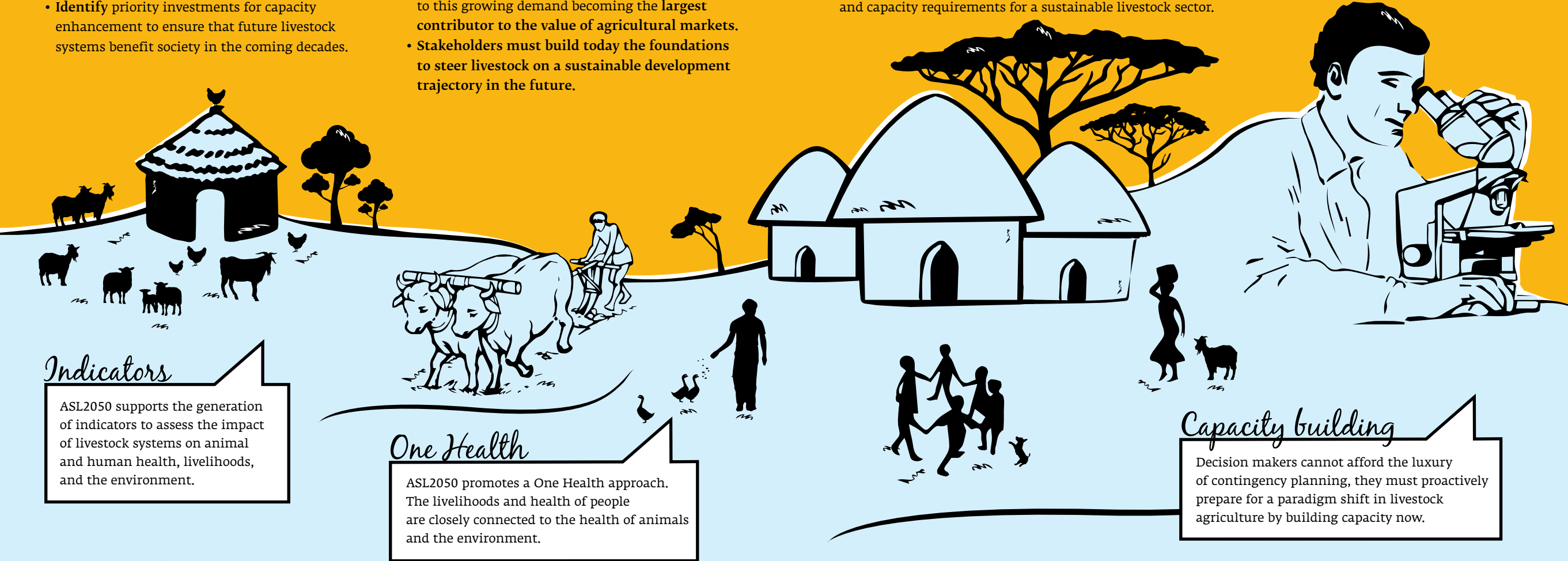
- **Assess** how livestock can be both good and bad for society; impacting public health, people's livelihoods and the environment.
- **Build** alternative scenarios of livestock growth trajectories in the coming decades.
- **Identify** priority investments for capacity enhancement to ensure that future livestock systems benefit society in the coming decades.

Why?

- Africa's growing, and increasingly affluent, population's **demand for meat, milk and eggs will double, triple, or even quadruple in the next few decades.**
- The livestock sector will revolutionize in response to this growing demand becoming the **largest contributor to the value of agricultural markets.**
- **Stakeholders must build today the foundations to steer livestock on a sustainable development trajectory in the future.**

How?

- **Facilitating multi-stakeholder dialogue** and partnering with ongoing livestock initiatives in Burkina Faso, Egypt, Ethiopia, Kenya, Nigeria and Uganda as well as at a regional level.
- **Building upon available data, information and tools** to examine livestock systems and generate long-term projections.
- **Build a series of livestock scenarios** to identify alternative policy options and capacity requirements for a sustainable livestock sector.



Indicators

ASL2050 supports the generation of indicators to assess the impact of livestock systems on animal and human health, livelihoods, and the environment.

One Health

ASL2050 promotes a One Health approach. The livelihoods and health of people are closely connected to the health of animals and the environment.

Capacity building

Decision makers cannot afford the luxury of contingency planning, they must proactively prepare for a paradigm shift in livestock agriculture by building capacity now.

Contact

ugo.picaciamarra@fao.org

www.fao.org/ag/againfo/programmes/en/ASL2050.html

Partners

Governments of Burkina Faso, Egypt, Ethiopia, Kenya, Nigeria and Uganda.

P&R, PREDICT-2 and other regional and international governments and organizations.



USAID
FROM THE AMERICAN PEOPLE

Financial support provided by the United States Agency for International Development (USAID)