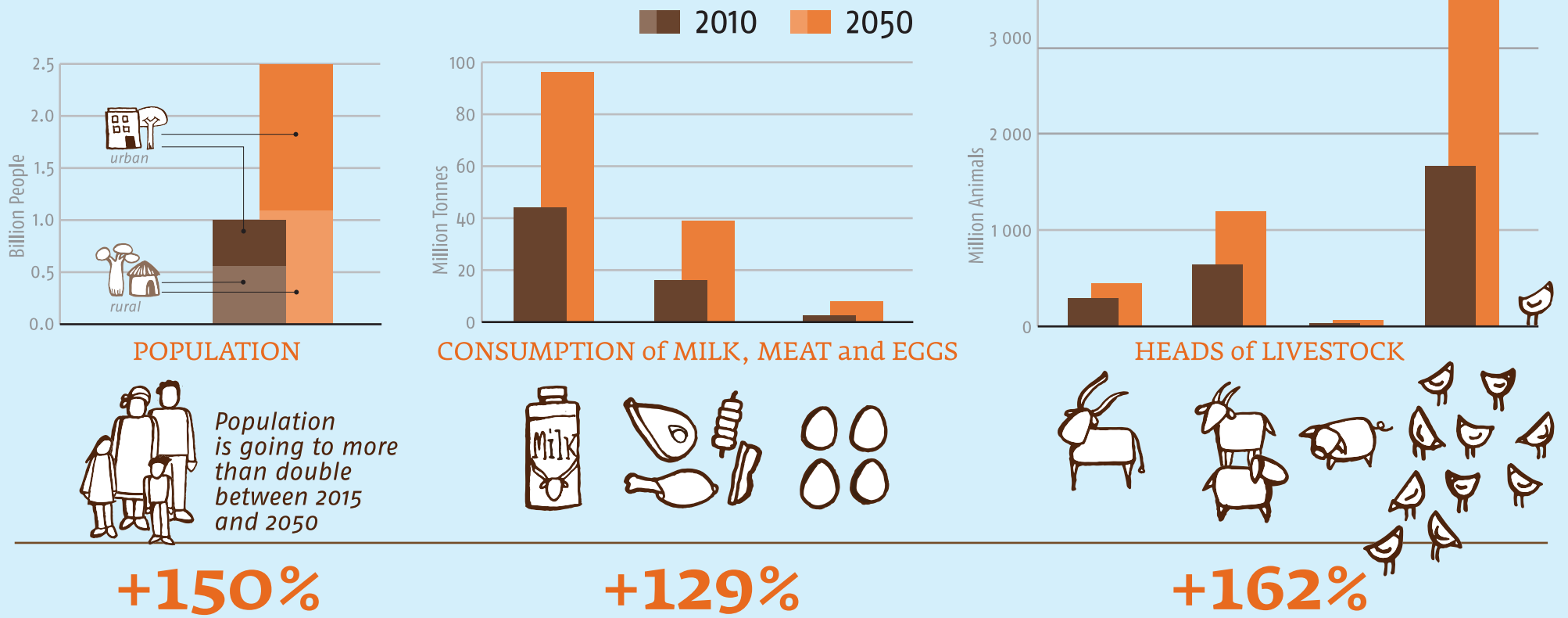




# AFRICA SUSTAINABLE LIVESTOCK 2050

Africa's population will change profoundly in the next 30–40 years and its livestock sector will undergo dramatic changes...



...Resulting in **OPPORTUNITIES** and **CHALLENGES** for:

**LIVELIHOODS:**  
**50%**  
of households in Africa, partly or fully depend on livestock for their livelihood.

What will the role of small-holders be

**PUBLIC HEALTH:**  
**70%**  
of emerging infectious diseases come from animals.

How will disease emergence from animals be prevented

**ENVIRONMENT:**  
**25%**  
of Africa's agricultural land is used to feed cattle.

Where will the additional animal feed be produced

Anticipating these changes will help us prepare for the future.

**2050**

ASL2050 collaborates with national governments to provide evidence for forward looking policies which will ensure livestock make a positive contribution to societies in the **FUTURE.**

For more information visit:  
[www.fao.org/ag/againfo/programmes/en/ASL2050.html](http://www.fao.org/ag/againfo/programmes/en/ASL2050.html)

With the financial support of



**USAID**  
FROM THE AMERICAN PEOPLE