



联合国
粮食及
农业组织

Food and Agriculture
Organization of the
United Nations

Organisation des Nations
Unies pour l'alimentation
et l'agriculture

Продовольственная и
сельскохозяйственная организация
Объединенных Наций

Organización de las
Naciones Unidas para la
Alimentación y la Agricultura

منظمة
الأغذية والزراعة
للأمم المتحدة

FINANCE COMMITTEE

Hundred and Seventy-first Session

Rome, 29 - 31 May 2018

**Report on the Utilization of WFP's Advance Financing Mechanisms
(1 January - 31 December 2017)**

Queries on the substantive content of this document may be addressed to:

Mr Sean O'Brien
Director, Budget and Programming Division and Deputy Chief Financial Officer
World Food Programme
Tel: +3906 6513 2682

*This document can be accessed using the Quick Response Code on this page;
an FAO initiative to minimize its environmental impact and promote greener communications.
Other documents can be consulted at www.fao.org*



EXECUTIVE SUMMARY

- The “Report on the Utilization of WFP’s Advance Financing Mechanisms (1 January–31 December 2017)” is submitted to the Board for decision.
- WFP continues to be funded entirely by voluntary contributions. The lives and livelihoods of the people WFP serves depend on the timely transfer of benefits, which can be better secured through the advance financing mechanisms at WFP’s disposal, enabling WFP to be flexible in funding its operations according to needs.
- The tools that WFP can utilize to achieve these goals include:
 - ✓ Internal Project Lending (IPL)
 - ✓ Macro Advance Financing (MAF)
 - ✓ Immediate Response Account (IRA)
 - ✓ Advance financing for Corporate Services
 - ✓ Global Commodity Management Facility (GCMF)
- This paper reports on the use of these advance financing tools in 2017.
- The paper also requests approval for an increase in the ceiling of the Global Commodity Management Facility (GCMF) from USD 350 million to USD 500 million. The last increase of the ceiling was approved by the Executive Board in November 2013. In order to ensure a 12-month supply line of food to the GCMF planning zones, USD 1.1 billion would be required. However, taking into account that stock rotations average 2.5 times per annum, the envelope should be increased to USD 500 million to ensure a steady corporate supply line of food to be prepositioned by GCMF, and to provide an amount available to respond to unfolding emergencies.

GUIDANCE SOUGHT FROM THE FINANCE COMMITTEE

- The Finance Committee is requested to take note of WFP’s “Report on the Utilization of WFP’s Advance Financing Mechanisms (1 January–31 December 2017)”.

Draft Advice

- **The FAO Finance Committee advises the Executive Board, in accordance with Article XIV of the General Regulations of WFP, to take note of the “Report on the Utilization of WFP’s Advance Financing Mechanisms (1 January–31 December 2017)”.**
- **The FAO Finance Committee also recommends to the Executive Board that the draft decision to increase the ceiling on the Global Commodity Management Facility (GCMF) to USD 500 million be approved by the Executive Board.**



World Food Programme
Programme Alimentaire Mondial
Programa Mundial de Alimentos
برنامج الأغذية العالمي

Executive Board
Annual session
Rome, 18–22 June 2018

Distribution: General

Agenda item 6

Date: 11 May 2018

WFP/EB.A/2018/6-D/1

Original: English

Resource, financial and budgetary matters

For approval

Executive Board documents are available on WFP's website (<https://executiveboard.wfp.org>).

Report on the utilization of WFP's advance financing mechanisms during the period 1 January–31 December 2017

Draft decision*

The Board takes note of the "Report on the utilization of WFP's advance financing mechanisms during the period 1 January–31 December 2017" (WFP/EB.A/2018/6-D/1) and approves an increase in the ceiling of the Global Commodity Management Facility from USD 350 million to USD 500 million.

* This is a draft decision. For the final decision adopted by the Board, please refer to the decisions and recommendations document issued at the end of the session.

Focal points:

Mr S. O' Brien
Director
Budget and Programming Division and
Deputy Chief Financial Officer
tel.: 066513-2682

Mr C. Gardner
Chief
Organizational Budgeting Service
tel.: 066513-2077

Introduction

1. WFP continues to be funded entirely by voluntary contributions. The lives and livelihoods of the people WFP serves depend upon the timely transfer of benefits, which can be better guaranteed through the advance financing mechanisms at WFP's disposal.
2. This report describes the use of advance financing resources in 2017, during which they have been used to fund projects, to purchase food in anticipation of requests for food distributions and to support corporate services.

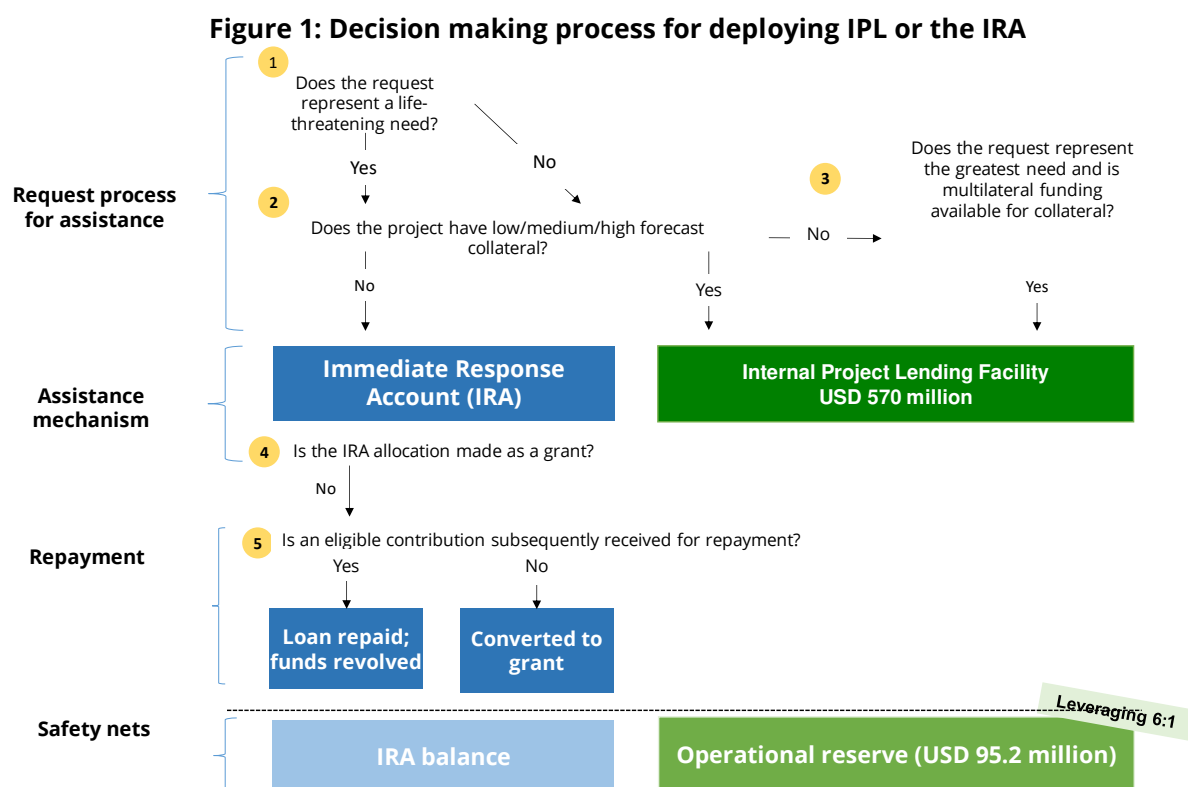
Advance financing for the release of funds to projects

3. Three mechanisms were deployed in 2017 to provide projects with advance financing or spending authority:
 - i) *Internal project lending (IPL)*:¹ This mechanism allows forecast contributions to a project to serve as collateral to support spending on the project before the contributions are confirmed. The Executive Board has approved a ceiling for IPL of USD 570 million. This level is guaranteed through the operational reserve of USD 95.2 million, leveraged at a ratio of 6:1.
 - ii) *Macro advance financing (MAF)*: This mechanism is similar to IPL and is managed within the IPL ceiling of USD 570 million, but spending authority is based on a general funding forecast acting as collateral instead of specific forecast contributions. MAF was begun on a pilot basis in 2016; it was continued on the same basis in 2017, but fewer countries benefitted from it.
 - iii) *The Immediate Response Account (IRA)*: The IRA enables WFP to finance specific activities addressing life-threatening situations. Funding allocations from the IRA are made without the need for collateral since the IRA is an existing reserve established by the Executive Board. The IRA is replenished through direct donor contributions (see annex I). IRA funds allocated to a given project may be revolved when a project allocation is reimbursed from donor contributions made directly to the project (see annex III). The IRA target level is USD 200 million² for each financial period.

¹ Internal project lending is a component of WFP's Working Capital Financing Facility.

² WFP/EB.2/2014/5-A/1, paragraphs 9–11.

4. Figure 1 illustrates the process used for deciding whether to deploy IPL or the IRA.



Use of internal project lending in 2017

5. IPL can be used to provide spending authority for projects when resources exist in the form of forecast contributions that serve as collateral for the advance. Table 1 shows the history of IPL from its inception in 2004. In 2017, the total value advanced reached USD 1.278 billion (see Annex IV) – an increase of 17 percent from the previous record in 2014. These advances were made for 67 distinct operations, including under 11 country portfolio budgets. Protracted relief and recovery operations (PRROs) accounted for 68.0 percent of these advances' total value, while emergency operations (EMOPs) accounted for 24.5 percent, country portfolio budgets 4.9 percent, special operations 2.3 percent and country programmes 0.3 percent.

TABLE 1: INTERNAL PROJECT LENDING, 2004–2017			
Year	Number of loans	Amount advanced (USD million)	Average loan amount (USD million)
2004	5	27.1	5.4
2005	10	154.5	15.5
2006	4	36.8	9.2
2007	21	157.3	7.5
2008	58	324.6	5.6
2009	35	227.1	6.5
2010	62	427.3	6.9
2011	64	439.1	6.9
2012	120	636.1	5.3
2013	132	675.2	5.1
2014	161	1 092.8	6.8
2015	157	777.5	5.0
2016	179	1 072.4	6.0
2017	176	1 277.7	7.3
All years	1 184	7 325.6	6.2

6. The value of advances made in 2017 increased by USD 205.3 million – 19 percent – from 2016. The largest advances were provided for WFP’s operations in the Syrian Arab Republic and the Syrian regional response (USD 469.5 million), West Africa (USD 131.4 million), Yemen (USD 96 million), Somalia (USD 81 million), Ethiopia (USD 74.9 million) and Uganda (USD 58.8 million). These operations alone received 54 advances – 31 percent of all advances made during the year – and accounted for 71 percent of the total value of all IPL advances.

Syrian Arab Republic

An IPL advance of USD 99 million in February 2017 enabled the Syrian Arab Republic country office to cover imminent shortfalls for April and May and build up in-country stocks, ensuring the provision of a stable food basket and the distribution of a nearly full general food basket from April onwards. The level of available stocks gradually increased, providing a buffer against possible supply disruptions in the country, where lead times are long and import procedures strict.

On 15 May, another advance of USD 56 million helped to prevent pipeline breaks that were anticipated to begin in August 2017. It also ensured that the general food basket remained as close as possible to the resource-based plan – in line with WFP guidance – until September. The advance enabled the supply chain for the Syrian PRRO to remain at an optimum level, with two months of stocks available in-country and requirements for an additional month in transit. This was particularly helpful after the country office was notified that it could no longer procure from Turkey and needed to identify new supply sources.

Nigeria

In the first quarter of 2017, WFP faced significant resource shortfalls, forcing WFP to review its priorities. To optimize funding for its EMOP and ensure that the most vulnerable beneficiaries received assistance, WFP developed a nuanced prioritization plan focusing on the most critically food-insecure populations in consultation with donors and partners.

Taking advantage of IPL, WFP was able to use advances made between January and May 2017 to procure food earlier, reduce pipeline breaks and increase the predictability of operations, enabling it to scale up during the lean season.

Flexible funding for food assistance and the use of the Global Commodity Management Facility (GCMF) enabled WFP to address the needs of 1.1 million vulnerable people on average each month, scale up its critical life-saving operation in Borno and Yobe states and expand coverage to Adamawa state. This contributed to a reduction in the use of negative coping strategies while ensuring that food assistance was provided in a safe and dignified manner.

According to the October 2017 cadre harmonisé, the number of people facing critical and crisis food and nutrition insecurity in Borno, Adamawa and Yobe states was expected to drop from an estimated 5.2 million between June and August 2017 to 2.6 million between October and December.

Yemen

During 2017, IPL was a key factor in covering pipeline needs for the EMOP in Yemen. While the EMOP was 90 percent funded in 2017, advance financing allowed 11 percent of the total requirement of USD 874 million to be made available in time to cover pipeline gaps.

Given Yemen's complex operating environment including challenges at all stages of the supply chain, 3–5 months are required on average to convert donor contributions into assistance. While WFP used local procurement and the GCMF to expedite deliveries, these options have limitations and require at least two months of lead time. IPL was critical, enabling WFP to avoid delivery delays by providing spending authority based on donor collateral and to start the procurement process in time for efficient delivery.

The advances received during the EMOP allowed WFP to purchase over 117,000 mt of food and provide over USD 16.5 million in cash-based transfers.

During November 2017, and following the blockade of ports and airports in Yemen and fighting in Sana'a and elsewhere in early December, the country office requested use of the IRA for the airlift of 100 mt of high-energy biscuits to newly displaced populations with no access to cooking facilities or clean water. The USD 532,000 received from the IRA enabled the pre-positioning of enough high-energy biscuits to assist 121,428 beneficiaries for one week.

MAF pilots in 2017

7. MAF takes IPL one step further by providing budget authority based on the overall funding forecast rather than specifically identified contributions acting as collateral for an advance. The funding forecast projects the level of resources that a country office may reasonably expect based on past contribution trends and an assessment of donors' funding intentions. The principal aim of MAF is to increase the predictability of resources available to programmes and increase their efficiency and effectiveness through timely spending authority. In 2015, the Executive Board was informed of the plan to pilot MAF in 2016, with an upper limit of between USD 150 million and USD 200 million set aside from the IPL ceiling.³

³ WFP/EB.2/2015/5-C/1.

8. Table 2 shows the country offices participating in MAF pilots in 2017 and the financial status of the 2017 pilots in March 2018.

TABLE 2: RESOURCE-BASED PLANS AND MAF; 2017 ADVANCES AS OF MARCH 2018					
Country	Project	2017 needs-based plan	2017 resource-based plan	MAF released	MAF advance repaid
		<i>USD million</i>			
Mali	PRRO 200719	99.0	54.2	9.4	9.4
Ethiopia	PRRO 200700	131.0	100.5	18.7	14.0
Kenya	PRRO 200737	88.4	58.4	7.9	7.9
Total				36.0	

9. The report on the utilization of WFP's advance financing facilities during in 2016⁴ explained the positive impacts of MAF, which include the mitigation of pipeline breaks and ration cuts and the ability to take advantage of favourable commodity prices.
10. The report also noted challenges identified in the MAF pilots that hindered optimal implementation. These challenges included the earmarking of received contributions for other activities, making it difficult to repay advances made through MAF, and a high level of manual intervention required in the repayment process to match MAF expenditures with donor conditions, which hindered MAF expansion. Difficulties were also encountered in repaying MAF advances to country programmes in the 2016 pilots, and country programmes were, as a result, excluded from MAF for 2017.
11. Nevertheless, the clear benefits of MAF are sufficiently persuasive to call for WFP to continue its efforts to overcome the constraints. The Boston Consulting Group is supporting WFP in reviewing the work of the Strategic Resource Allocation Committee on the use of "softly" earmarked contributions in order to determine how such contributions can be used to achieve better outcomes. This includes a review of options for establishing a MAF safety net and a more holistic approach to the resources at WFP's disposal (including the operational reserve).

Use of the IRA in 2017

12. The IRA was established in December 1991 to provide immediate assistance in emergencies. Annex II details 2017 IRA allocations to operations requiring rapid injections of resources to respond to life-threatening situations in the absence of forecast contributions. If an operation receives no contributions after receiving an IRA allocation and the ability to repay is compromised, either part of or the entire original allocation may be converted to a grant.
13. The IRA received USD 61.9 million in new contributions in 2017, including a transfer of USD 15 million from the Programme Support and Administration Equalization Account. Taken together with the USD 114.5 million revolved during that year, the total inflow for 2017 amounted to USD 176.4 million.

⁴ WFP/EB.A/2017/6-J/1.

	2010	2011	2012	2013	2014	2015	2016	2017
New contributions	37.3	38.1	56.2	52.1	53.1	107.3	47.6	61.9
Allocations	151.9	161.9	126.1	165.3	182.0	164.2	215.2	154.2
Revolved funds	113.0	104.4	82.4	88.6	132.6	95.3	125.2	114.5

14. IRA allocations during 2017 totalled USD 154.2 million (see table 3). These funds were utilized for 11 PRROs (USD 68.2 million), two special operations (USD 5.3 million), three EMOPs (USD 16.7 million), seven crisis-response activities under country portfolio budgets (USD 42.3 million), 15 immediate-response EMOPs approved under the delegated authority of country directors, regional directors and the Director of Emergencies (USD 16.2 million) and 14 preparedness allocations (USD 5.6 million).
15. In 2017, the largest IRA allocations were made to operations in Somalia and the Democratic Republic of the Congo, both of which received approximately USD 40 million, accounting for 52 percent of the total IRA allocations made that year. Other large allocations (exceeding USD 5 million) were made to Myanmar, Niger and Tanzania.

Somalia

Eight IRA advances were made to Somalia during 2017, amounting to USD 121 million (USD 40 million from the IRA and USD 81 million from IPL). With these funds, WFP was able to purchase over 8,000 mt of critical nutritious food from the GCMF, enabling rapid delivery of assistance at the height of the famine emergency response. The advances also allowed a rapid and timely scale up of cash-based transfers, with over USD 60 million transferred to vulnerable Somalis.

The first IRA allocation was granted in February 2017 at the start of the emergency response, allowing for timely emergency assistance while donor funding was being negotiated. Additional IRA grants and IPL allocations made throughout the year enabled WFP to maintain the highest possible level of assistance. Without this funding, the country office's ability to mitigate major pipeline breaks and assist 3.1 million drought-affected Somalis would have been severely reduced.

Democratic Republic of the Congo

The IRA accounted for more than 43 percent of resources utilized by WFP in Kasai during 2017. It enabled WFP to:

- procure and transport more than 19,000 tons of food and USD 750,000 in cash;
- assist 400,000 people in the most food-insecure areas, in collaboration with partners; and
- provide critical nutrition assistance to 44,000 children and pregnant and lactating women.

Using the IRA in tandem with the Central Emergency Response Fund and direct donor contributions, WFP has been able to continue scaling up its response in Kasai.

Myanmar

An IRA advance allowed WFP to procure 9,560 tons of rice, peas, vegetable oil, iodized salt and enriched flour. The first delivery of these commodities took place at the end of December 2017, just prior to the start of the country strategic plan.

This allocation has had a crucial impact on more than 150,000 vulnerable people in Rakhine state. The country office was able to manage the critical funding situation and move from a PRRO to a CSP in January 2018, avoiding substantial shortfalls in January. Timing of the allocation was also a critical factor in allowing the country office to prioritize resources in anticipation of the Level 3 emergency in Rakhine.

16. At the end of 2017, the IRA balance was USD 35.9 million, compared with USD 13.8 million at the end of 2016. Outstanding advances made to projects but not yet repaid or converted to grants totalled USD 89.5 million at year end.

IRA grants made during 2017

17. During 2017, 63 allocations made during 2016 and 2017 were converted into grants. These allocations totalled USD 103.7 million, including those made to immediate-response EMOPs and in support of preparedness activities.

Advance financing for corporate services

18. The Global Vehicle Leasing Pool credit line remained at USD 15 million throughout 2017.
19. Three advances totalling USD 5.7 million were made from the Capital Budgeting Facility to support the Logistics Execution Support System, bringing the total advanced since 2013 to USD 37.3 million, and to construct a new Mali country office in Bamako. Recovery of the LESS advance continued throughout 2017. USD 14.7 million was recovered during the year, leaving an outstanding balance of USD 7.7 million.
20. In addition, six other advances totalling USD 4.4 million were made in 2017 for fee-for-service activities focusing on wellness, security, telecommunications and evaluations.

Advance financing for food purchase prior to requests from projects

21. The GCMF enables food purchases to be made and commodities to be pre-positioned in advance of requests from specific projects. It improves WFP's effectiveness by anticipating needs and resources and setting the supply process in motion early, enabling WFP to exploit favourable market conditions and reduce response times in emergencies. It is administered through a special account.
22. WFP maintains food inventories for certain planning zones to reduce delivery lead times. These inventories are replenished according to aggregated demand and projected resources and shortfalls. Food is released for specific projects upon receipt of confirmed contributions or advances from IPL or allocations from the IRA. Since its inception in 2008, the approved GCMF level has increased from USD 60 million to USD 350 million in order to provide for operations covering large areas and for more non-cereal foods.

Highlights in 2017

23. Each year, the GCMF plays an increasingly important role in enabling WFP to reach beneficiaries effectively and efficiently by providing a steady supply of commodities with reduced lead times and with better value for money. In 2017, the GCMF accounted for 46 percent of food purchased by country offices – the highest share ever delivered through the facility.
24. In 2017, the GCMF provided food for an estimated 32 million people by transferring 1.7 million mt to 44 country offices. This is the highest quantity delivered through the facility in a single year. The GCMF is also increasingly supporting local and regional purchases: 45 percent of the commodities purchased through the facility during 2017 were sourced from local and regional markets in East, West and Southern Africa.
25. Countries purchasing from the facility were able to deliver food to beneficiaries in an average of 41 days, or nearly three months earlier than through the conventional procurement process.

26. Countries facing unfolding crises sourced their food almost exclusively from GCMF: seven out of the top ten GCMF “customers” were affected by Level-2 or Level-3 emergencies and were provided with a total of 1.2 million mt of food with reduced lead times. When purchasing from the facility, WFP offices responding to the “four famines” and other emergencies received food after an average of 38 days – 68 percent faster than through conventional procurement.
27. The average monthly GCMF inventory in 2017 was 532,000 mt; this steady flow of supplies enabled WFP to meet operational requirements promptly. Unsold stocks at discharge ports averaged 62,000 mt, minimizing the risk of prolonged storage costs and maximizing lead-time gains.
28. The GCMF has also flexibly managed the USD 350 million ceiling between active planning zones. The ability to quickly allocate funds where they are most needed while decreasing envelope allocations in areas phasing out of emergencies has allowed WFP to provide a more effective response to unfolding food crises. For example, the supply line in Southern Africa was expanded in the second half of 2017 to support the response to the Kasai crisis in the Democratic Republic of the Congo. This allowed WFP to reduce procurement lead time by more than two months on average.
29. The GCMF’s potential is now constrained by the USD 350 million ceiling previously approved by the Board. To maximize its effectiveness, a further expansion of the facility is required to ensure that a growing number of WFP operations can benefit from faster delivery of food.

Request for an expansion of the GCMF ceiling

a) Background

30. In 2008, WFP allocated USD 60 million from the Working Capital Financing Facility to a special account for a pilot project exploring the potential of forward planning and purchasing.⁵ Between June 2008 and July 2010, 440,000 mt of cereals and a small quantity of pulses were purchased through the GCMF. In September 2010, the Canadian International Development Agency provided a CAD 20 million grant to support the facility, enabling WFP to expand the pilot to include non-cereal foods, develop capacity for local procurement in countries with surplus production and enhance in-house capacities.⁶
31. In November 2010 – after the successful implementation of the pilot – the Executive Board approved an increased allocation of USD 150 million from the Working Capital Financing Facility to the GCMF special account, expanding the model to include non-cereals and a wider geographic area for procurement.⁷ In mid-2011, a continuous global pipeline to several defined zones was launched under parameters defined by the Executive Director and the Executive Management Group. Supply lines were established to East Africa, West Africa, Southern Africa and the Middle East – plus a global supply line for nutritious food – under the supervision of the special account manager.
32. Following demonstrated efficiency gains produced through the use of the facility, the Executive Board approved a request to increase GCMF authority to USD 300 million in June 2012.⁸ In November 2013, this authority was further increased by USD 50 million in

⁵ “Forward Purchase Facility” (WFP/EB.A/2012/6-B/1).

⁶ *Ibid.*

⁷ “Review of the Working Capital Financing Facility” (WFP/EB.2/2010/5-B/1).

⁸ “Forward Purchase Facility” (WFP/EB.A/2012/6-B/1).

order to meet potential sudden surges in needs during unfolding emergencies.⁹ In 2014, the Board approved the separation of the GCMF from the Working Capital Financing Facility.¹⁰

b) GCMF achievements 2011–2017

Share of total volume of food handled by WFP

33. Since its expansion in mid-2011, the GCMF has become responsible for an increasing share of WFP's food supply chain. The quantity of food purchased through the facility increased from 377,000 mt in 2011 to 1.7 million mt in 2017, while the share of GCMF purchases of the total amount of food handled by WFP increased from 10 percent in 2011 to 46 percent in 2017.¹¹

Year	Cash-funded purchases (mt)		In-kind funding (mt)	Share of GCMF purchases (percent)
	GCMF purchases	Direct cash purchases		
2011	377 000	1 984 000	1 242 000	10
2012	612 000	1 312 000	1 344 000	19
2013	850 000	1 232 000	959 000	28
2014	815 000	1 388 000	1 103 000	25
2015	844 000	1 334 000	1 296 000	24
2016	1 356 000	1 230 000	1 188 000	36
2017	1 738 000	1 192 000	844 000	46

34. In 2017, GCMF purchases accounted for approximately 60 percent of WFP's total cash-funded purchases. While many large operations rely on the GCMF for nearly all of their cash-funded requirements, several smaller projects source their food exclusively from the facility.¹²

Recipient country	GCMF purchases (mt)	Direct cash purchases (mt)	Share of GCMF purchases (percent)
Yemen (Level 3)	338 000	127 000	73
Ethiopia (Level 2)	307 000	6 000	98
South Sudan (Level 3)	189 000	2 000	99
Uganda	173 000	14 000	93
Nigeria (Level 3)	152 000	30 000	84
Malawi	90 000	3 000	97

⁹ "WFP Management Plan (2014–2016)" (WFP/EB.2/2013/5-A/1).

¹⁰ "Report on the Utilization of WFP's Advance Financing Mechanisms (1 January–31 December 2014)" (WFP/EB.A/2015/6-J/1).

¹¹ WFP. *Food PO report (ZSCR035)*.

¹² *Ibid.*

TABLE 5: 2017 GCMF VS. DIRECT CASH PURCHASES FOR TOP TEN GCMF CLIENTS			
Recipient country	GCMF purchases (mt)	Direct cash purchases (mt)	Share of GCMF purchases (percent)
Syrian Arab Republic (Level 3) ¹³	67 000	403 000	14
Kenya (Level 2)	55 000	3 000	94
United Republic of Tanzania	46 000	5 000	90

Lead-time gain

35. In 2017, country offices purchasing from the GCMF delivered assistance to beneficiaries after an average of 41 days from the confirmation of the contribution funding the assistance: this represents a 66 percent reduction when compared to the 120-day average lead time in the conventional procurement process¹⁴ and is a further improvement on the 46-day average in 2016.

c) Main constraints of the GCMF

Availability

36. Currently, the USD 350 million GCMF envelope is fully utilized as a result of the increase in needs in the Horn of Africa, Nigeria, South Sudan and Yemen. Most of WFP's Level-2 and Level-3 emergencies have come to rely upon GCMF for up to 100 percent of their cash-funded procurements.
37. At the beginning of 2017, the Middle East GCMF supply line serving the Syria+5 Level-3 emergency was put on hold because of the proximity of the main sourcing area in Turkey. However, following the approval of an export ban by the Government of Turkey in August 2017, the Syrian Arab Republic country office requested that the Middle East supply line be re-activated. In the second half of 2017, the Asia regional bureau also requested activation of a GCMF supply line in order to reduce delivery lead times in Iran, Pakistan and the Far East.
38. With the current USD 350 million envelope, the GCMF cannot ensure steady food supply lines and reduced lead times for all countries that need them while maintaining sufficient funds to cope with unfolding emergencies.

The GCMF and procurement from smallholder farmers

39. Since its expansion in 2011, the GCMF has been increasing its food purchases from local and regional markets, from less than 2 percent in 2011 to 45 percent in 2017.
40. Purchases from smallholder farmers (SHFs) have increased hand in hand with the amount of food sourced locally and regionally. WFP is committed to sourcing 10 percent of cash-funded requirements from SHFs. The GCMF is utilized in most of the countries where SHF procurement is implemented and is a critical tool for achieving this objective.
41. For effective procurement from SHFs, funding needs to be made available to traders before harvest time to allow them to begin the tendering process well in advance. This limits the

¹³ In 2017, the GCMF supply line to the Syrian Arab Republic was temporarily put on hold due to the proximity of the main sourcing option in Turkey, resulting in limited lead-time gains. In late 2017, following the approval of an export ban by the Turkish Government, the supply line was re-activated.

¹⁴ GCMF 2017 Performance Report.

risk of farmers being unable to deliver the agreed quantity of food on time. The need for flexibility in the timing of funding allocations makes the GCMF the ideal solution for SHF procurement, which cannot be contingent upon the often uncertain confirmation of donor contributions. Providing funds to traders before harvest time would mean committing GCMF funds for an average of 6–9 months.

42. It is estimated that an initial allocation of USD 20 million per year (for food and associated costs) under the GCMF special account would be needed to provide initial support towards the goal of procuring 10 percent of total cash-funded purchases from SHFs in upcoming years. This represents 6 percent of the GCMF's current authority of USD 350 million, but with the GCMF fully utilized to serve active planning zones such an amount cannot be allocated to SHF procurement.

d) Expansion of the GCMF envelope

43. The last increase in the GCMF envelope, from USD 300 to USD 350 million, was approved by the Executive Board in November 2013.¹⁵ From that time until the end of 2015, the GCMF delivered an average of 840,000 mt of food per year. The volume of food handled through the facility rose from 1.4 million mt in 2016 to 1.7 million mt in 2017,¹⁶ an increase of more than 60 percent, despite the size of the envelope remaining the same.
44. Table 6 below presents projected cash-funded resources¹⁷ for 2018. It includes countries currently served by the facility and those that will be included in the near future.¹⁸

GCMF planning zone	2018 Projected cash-funded resourcing (mt)	2018 Projected cash-funded resourcing (USD million, food only)	2018 Projected cash-funded resources (USD million, food and associated costs)
East Africa	1 196 000	452	542
West Africa	297 000	182	219
Southern Africa	123 000	57	69
Middle East	250 000	155	186
Asia	97 000	71	85
Global/HRD	4 000	6	7
Total	1 968 000	923	1 108

¹⁵ "WFP Management Plan (2014_2016)" (WFP/EB.2/2013/5-A/1).

¹⁶ WFP. *Food PO report* (ZSCR035).

¹⁷ Amount of food projected to be purchased with forecasted cash funding.

¹⁸ "WFP Management Plan (2018–2020)" (WFP/EB.2/2017/5-A/1/Rev.1).

45. USD 1.1 billion would be needed to ensure a 12-month supply of food to GCMF planning zones. Considering the average 2.5 stock rotations per year, the GCMF envelope should therefore be increased to USD 440 million. Considering an amount to be kept aside for responding to unfolding emergencies, the Secretariat proposes to the Board that the GCMF authority be increased to USD 500 million, of which:
- USD 440 million (food and associated costs) would be used to ensure a steady supply of food at reduced lead times for zones to be served by the GCMF and to preserve the principle of the GCMF as a revolving fund, with approximately 2.5 stock rotations per year;
 - USD 20 million (food and associated costs) would be used to support SHF procurement activities under a dedicated budget line within the GCMF Special Account in order to simplify the tracking process and allow the commitment of funds for longer periods of time without affecting lead-time gains; and
 - USD 40 million (food and associated costs) would be unassigned and allocated to any supply line as necessary in unfolding emergencies.

Risk management

46. In a 2014 paper on the restructuring of its Working Capital Financing Facility,¹⁹ WFP recognized that losses of GCMF food stocks resulting from operational risks constituted a small percentage of total GCMF purchases and that no GCMF food losses had resulted from poor demand planning. The paper also described WFP's use of self-insurance to protect against food losses from damaged goods, loss and theft up to the point of entry into a country. For 2013–2017, total food losses incurred from GCMF purchases totalled USD 4.9 million out of USD 2.8 billion in GCMF total purchases over the same period. This represents less than 0.2 percent of the total volume handled through the facility. It is notable that all losses were recovered through the insurance scheme.
47. In order to create additional safety nets, the Executive Board approved the establishment of a reserve for the GCMF, transferring USD 6 million from the operational reserve to the GCMF reserve. This amount is considered a sufficient safety net for an enlarged USD 500 million GCMF.

¹⁹ "Financial Framework Review: Restructuring of the Working Capital Financing Facility" (WFP/EB.A/2014/6-D/1).

ANNEX I: CONTRIBUTIONS TO THE IMMEDIATE RESPONSE ACCOUNT AS AT 31 DECEMBER 2017 (USD)										
Donors	2008	2009	2010	2011	2012	2013	2014	2015	2016	2017
African Development Bank	-	904 47	-							
Algeria	-	-	-							
Argentina	-	-	-							
Australia	9 447 500	-	-	491 157	13 679	7 342		16 760		
Austria	-	-	-							
Belgium	1 164 289	1 406 470	5 465 697	2 962 355	7 765 097	6 603 201	9 142 497	5 530 973	5 586 592	5 599 104
Burkina Faso	-	-	1 186							
Canada	10 343 829	8 680 113	5 398 892	5 058 169	5 814 252	4 925 384	5 489 981	4 749 466	4 612 546	4 549 929
China	17 370	131	-					488 000	500 000	500 000
Cuba	-	-	-	38 091						
Cyprus	-	-	-							
Czech Republic	-	649	-							
Denmark	-	281 669	-	70 976	7 978 736	8 114 747	9 057 727	7 666 820	7 252 659	3 660 737
Faroe Islands	-	-	-							
Finland	619 762	1 079 799	12 588	366 426						
France	463 811	82 998	5 691	12 658				113 379	113 379	66 252
Germany	-	5 722 892	395 315	3 047 604		2 652 520	2 758 621	2 352 941	2 219 756	1 770 956
Greece	1 460	3 947	-							
Holy See	-	-	-							
Iceland	668	-	-	9 841						
Indonesia	-	-	-							

ANNEX I: CONTRIBUTIONS TO THE IMMEDIATE RESPONSE ACCOUNT AS AT 31 DECEMBER 2017 (USD)										
Donors	2008	2009	2010	2011	2012	2013	2014	2015	2016	2017
Ireland	2 356 467	1 882 565	1 973 009	2 329 700	2 264 901	2 388 060	2 352 941	3 968 881	1 946 903	3 815 268
Israel	-	-	-							
Italy	-	383 369	-							
Japan	817 312	400 000	-	600 000	672 000	658 602				
Korea, Rep. of	-	-	-							
Liechtenstein	95 987	88 495	94 239	114 454	108 788	110 496	110 962	107 893	101 333	99 834
Luxembourg	-	656 168	672 948	704 225	670 241	678 426	691 563	561 167	566 893	530 223
Malaysia	4 213	-	-							
Malta	-	-	157							
Mauritania	-	-	1 722							
Netherlands	5 638 728	3 246 352	-		138 507					
New Zealand	2 046	973	-					7 013		
Norway	9 885 706	12 965 132	11 812 627	13 231 865	12 674 825	12 264 063	12 230 094	9 247 449	10 000 000	10 004 457
Oman	-	-	656							
OPEC	-	-	13 396							
Private Sector-JAWFP										126 612
Private Sector-ITV										453 486
Poland	-	4 747	-		1 132					
Saudi Arabia	-	2 610	-						51 916	
Singapore	2 126	-	-							
Slovenia	-				2 615					

ANNEX I: CONTRIBUTIONS TO THE IMMEDIATE RESPONSE ACCOUNT AS AT 31 DECEMBER 2017 (USD)										
Donors	2008	2009	2010	2011	2012	2013	2014	2015	2016	2017
South Africa	-	-	-	213 075						
Spain	14 217 345	4 259 843	-	220 615		4 201	686 866	55 991		
Sweden	3 429 489	3 929 914	4 921 946	4 567 789	3 699 930	8 062 243	3 788 947	3 963 493	4 099 397	4 011 567
Switzerland	1 935 494	2 118 703	1 859 289	2 828 749	5 189 535	5 621 411	6 820 833	6 316 754	6 536 392	6 702 469
Thailand	-	113	-							
Turkey	-	7 087	-							
United Kingdom	222 628	488 235	52 384	1 281 770	9 220 833					
United States of America	-	-	-					5 000 000	4 000 000	5 000 000
Interest on IRA (since Sep 2009)	-	27 290	13 239							
Others*	48 788	5 022 513	4 702 187	(4 178)				57 146 734		15 000 000
TOTAL	60 715 018	52 743 682	37 397 167	38 145 344	56 215 070	52 090 696	53 131 031	107 293 714	47 587 767	61 890 895

* "Others" include (1) United Nations Common Funds and Agencies

* For 2015, "Others" includes transfer of USD 50 million from the Programme Support and Administrative (PSA) Equalization Account

* For 2017, "Others" includes transfer of USD 15 million from the Programme Support and Administrative (PSA) Equalization Account

ANNEX II: IMMEDIATE RESPONSE ACCOUNT ALLOCATIONS MADE DURING 2017					
Recipient	Project type	Project/ county portfolio budget (CPB)	Project title	Date of approval	Approved allocation (USD) excluding ISC
Immediate-response emergency operations approved under the delegated authority of the Country Director / Regional Director/Director of Emergencies					
Mozambique	IR-EMOP	201067	Food Assistance to Flood Affected People in Inhambane and Gaza Provinces	07-Mar-17	925 282
Kenya	IR-EMOP	201069	Treatment of Malnutrition resulting from Drought	10-Mar-17	1 395 292
Angola	IR-EMOP	201076	Emergency food assistance for DRC refugees and IDPs from the greater Kasai region	11-May-17	1 394 787
Central African Republic	IR-EMOP	201078	Immediate Response Emergency to Displaced Persons in CAR	19-May-17	1 401 869
Philippines	IR-EMOP	201084	Immediate Response to People Affected by Armed Conflict in Marawi City	13-Jun-17	467 290
Democratic Republic of the Congo	IR-EMOP	201089	Emergency Food Assistance for Populations Affected by the Conflict in the Kasai region	06-Jul-17	1 396 679
Nepal	IR-EMOP	201098	Support to Flood Affected	18-Aug-17	1 373 557
Sierra Leone	IR-EMOP	201097	Emergency Assistance to Communities Affected by Mudslide and Floods in Sierra Leone	21-Aug-17	813 084
Bangladesh	IR-EMOP	BD01	CPB Bangladesh 2017-2020	24-Aug-17	1 401 869
Haiti	IR-EMOP	201103	Immediate Response Emergency Operation for Hurricane Irma	06-Sep-17	784 923
Latin America and the Caribbean	IR-EMOP	201105	Assistance to Victims of Hurricane Irma and Hurricane Jose in the Eastern Caribbean	11-Sep-17	1 380 577
Latin America and the Caribbean	IR-EMOP	201104	Assistance to Victims of Hurricane Irma in the Western Caribbean	11-Sep-17	375 706
Cuba	IR-EMOP	201107	Assistance to Victims of Hurricane Irma in Cuba	15-Sep-17	1 401 760

ANNEX II: IMMEDIATE RESPONSE ACCOUNT ALLOCATIONS MADE DURING 2017					
Recipient	Project type	Project/ county portfolio budget (CPB)	Project title	Date of approval	Approved allocation (USD) excluding ISC
Zambia	IR-EMOP	201114	Emergency Food Assistance for DRC Refugees/Asylum Seekers in Nchelenge and Kawambwa Districts, Luapula Province	06-Nov-17	751 342
Philippines	IR-EMOP	201119	Immediate response to people affected by Typhoon "Vinta" (international name "Tembin")	29-Dec-17	938 967
SUB TOTAL					16 202 984
Preparedness activities					
Uganda	EPR	201048	Preparedness for refugee influx from South Sudan into northeast Uganda (Karamoja region)	10-Feb-17	280 373
Sri Lanka	EPR	201064	Specific Preparedness Activities in Sri Lanka due to severe drought impact	10-Mar-17	188 300
Democratic Republic of the Congo	EPR	201087	Preparedness activities in the Kasai region	6-Jul-17	272 008
Southern Africa	EPR	201093	Regional Preparedness for Cross-Border Displacements from DRC to Republic of Congo, Angola, Tanzania and Zambia	3-Aug-17	254 859
Yemen	EPR	201095	Support to Yemen Cholera Response	27-Jul-17	1 772 470
Jordan	EPR	201099	Berm Emergency Preparedness	23-Aug-17	279 832
Ecuador	EPR	EC01	Special Preparedness Activity in Relation to the Influx of Migrants from Venezuela to Ecuador	30-Aug-17	152 250
Zambia	EPR	201102	Immediate Response Account for DRC Refugee Emergency Preparedness in Zambia	13-Sep-17	107 649
Colombia	EPR	CO01	Special Preparedness Activity in the Departments of Norte de Santander, Arauca and La Guajira for the Humanitarian Border Crisis in Venezuela	18-Sep-17	181 627

ANNEX II: IMMEDIATE RESPONSE ACCOUNT ALLOCATIONS MADE DURING 2017					
Recipient	Project type	Project/ county portfolio budget (CPB)	Project title	Date of approval	Approved allocation (USD) excluding ISC
Libya	EPR	201112	Emergency Preparedness action aim to support WFP Libya CO to Assist the Security and Food Security Situation in Country, in Preparation for Scale-up of the Operation and for overall WFP Presence in CO	5-Oct-17	828 800
Tajikistan	EPR	201117	Special Preparedness Activities in Armenia	05-Dec-17	278 503
Zimbabwe	EPR	ZW01	CPB Zimbabwe (2017-2021)	05-Dec-17	260 729
West Africa	EPR	201118	Special Preparedness activities in the Sahel Region	27-Dec-17	750 077
SUB TOTAL					5 607 477
Allocations					
United Republic of Tanzania	PRRO	200603	Food Assistance for Refugees in North- Western Tanzania	18-Jan-17	5 800 000
Somalia	PRRO	200844	Reducing Malnutrition and Strengthening Resilience to Shocks for a Food-Secure Somalia	14-Feb-17	5 000 000
Algeria	PRRO	200301	Assistance to Western Saharan Refugees	14-Feb-17	1 458 952
Malawi	PRRO	200692	Responding to Humanitarian Needs and Strengthening Resilience	27-Feb-17	2 362 861
Peru	SOP	201071	Provision of logistics and programmatic expertise in support of Government of Peru's flood response	03-Apr-17	278 335
Zimbabwe	CPB	ZW01	CPB Zimbabwe (2017-2021)	04-May-17	934 579
Rwanda	PRRO	200744	Food and Nutrition Assistance to Refugees and Returnees	15-May-17	1 869 158
Somalia	PRRO	200844	Reducing Malnutrition and Strengthening Resilience to Shocks for a Food-Secure Somalia	17-May-17	7 100 000
Burkina Faso	PRRO	200793	Developing Resilience and Fighting Malnutrition	02-Jun-17	1 401 869

ANNEX II: IMMEDIATE RESPONSE ACCOUNT ALLOCATIONS MADE DURING 2017					
Recipient	Project type	Project/ county portfolio budget (CPB)	Project title	Date of approval	Approved allocation (USD) excluding ISC
Niger	PRRO	200961	Strengthening resilience in Niger through an integrated multi-sector and multi-partner safety net approach	02-Jun-17	7 943 925
Senegal	PRRO	200681	Senegal PRRO 200681 Protecting lives and promoting resilience of food-insecure communities including conflict affected Casamance	02-Jun-17	1 028 037
State of Palestine	PRRO	200709	Food Assistance for the Food-Insecure Populations in the West Bank and Gaza Strip	08-Jun-17	1 978 000
Somalia	PRRO	200844	Reducing Malnutrition and Strengthening Resilience to Shocks for a Food-Secure Somalia	08-Jun-17	9 400 000
Uganda	PRRO	200852	Food Assistance to Vulnerable Households in Uganda	13-Jun-17	3 000 000
Congo	EMOP	201066	Assistance to Displaced and Affected Population: District of Pool	15-Jun-17	1 652 392
Democratic Republic of the Congo	EMOP	201092	Food assistance to conflict-affected populations in the Kasai region	25-Aug-17	5 140 186
Latin America and the Caribbean	SOP	201106	Special Operations for Supply Chain and Emergency Telecommunications Augmentation and Coordination in Support of the Eastern Caribbean Islands Impacted by Hurricanes Irma and Jose	14-Sep-17	3 000 000
Bangladesh	CPB	BD01	CPB Bangladesh 2017-2020	25-Sep-17	2 679 963
Latin America and the Caribbean	SOP	201106	Special Operations for Supply Chain and Emergency Telecommunications Augmentation and Coordination in Support of the Eastern Caribbean Islands Impacted by Hurricanes Irma and Jose	29-Sep-17	2 000 000
Bangladesh	CPB	BD01	CPB Bangladesh 2017-2020	12-Oct-17	2 336 449
Nicaragua	CPB	NI01	CPB Nicaragua 2018-2018	16-Oct-17	424 596
Democratic Republic of the Congo	EMOP	201092	Food assistance to conflict-affected populations in the Kasai region	16-Oct-17	9 345 794

ANNEX II: IMMEDIATE RESPONSE ACCOUNT ALLOCATIONS MADE DURING 2017					
Recipient	Project type	Project/ county portfolio budget (CPB)	Project title	Date of approval	Approved allocation (USD) excluding ISC
Latin America and the Caribbean Bureau	PRRO	200490	Restoring Food Security and Livelihoods through Assistance for Vulnerable Groups Affected by Recurrent Shocks in El Salvador, Guatemala, Honduras and Nicaragua	16-Oct-17	1 119 490
Myanmar	CPB	MM01	CPB Myanmar 2018-2022	25-Oct-17	8 406 313
Democratic Republic of the Congo	CPB	CD01	CPB Congo, Democratic Republic 2018-2020	14-Nov-17	5 000 000
Democratic People's Republic of Korea	CPB	KPCO	CPB DPRK 2018-2020	27-Nov-17	1 869 159
Somalia	PRRO	200844	Reducing Malnutrition and Strengthening Resilience to Shocks for a Food-Secure Somalia	01-Dec-17	18 691 588
Democratic Republic of the Congo	CPB	CD01	CPB Congo, Democratic Republic 2018-2020	15-Dec-17	20 667 570
Yemen	EMOP	201068	Immediate, Integrated and Sustained Response to Avert Famine in Yemen	15-Dec-17	531 900
SUB TOTAL					132 421 116
GRAND TOTAL					154 231 576

ANNEX III: IMMEDIATE RESPONSE ACCOUNT REVOLVED FUNDS (2017)					
Recipient	Project type	Project/CPB	Project title	Number of revolving transactions	Amount revolved (USD) excluding ISC
Afghanistan	IR-EMOP	201023	Humanitarian Support to Afghan Returnees from Pakistan	1	73 466
Algeria	PRRO	200301	Assistance to Refugees from Western Sahara	1	289 230
Armenia	EPR	200968	Special Preparedness Activities in Armenia	1	96 668
Bangladesh	CPB	BD01	Bangladesh Country Strategic Plan (2017-2020)	1	2 336 449
Bolivia	IR-EMOP	201021	Assistance to Drought-Affected Populations of the Oruro Department	1	69 938
Democratic Republic of the Congo	EMOP	201092	Food assistance to conflict-affected populations in the Kasai region	2	5 031 289
Democratic Republic of the Congo	PRRO	200832	Targeted Food Assistance to Victims of Armed Conflicts and Other Vulnerable Groups in the Democratic Republic of the Congo	1	40 100
Ecuador	EMOP	200665	Emergency Food Assistance to Populations Affected by Earthquakes in Ecuador	3	1 507 888
Haiti	EPR	201031	Emergency Preparedness for Hurricane Matthew	1	705
Haiti	PRRO	200618	Strengthening Emergency Preparedness and Resilience in Haiti	2	573 614
Liberia	PRRO	200550	Food Assistance for Refugees and Vulnerable Host Populations	1	115 425
Madagascar	PRRO	200735	Response to Food Security and Nutrition Needs of Population Affected by Natural Disasters and Resilience Building of Food Insecure Communities of Madagascar	8	10 379 977
Malawi	PRRO	200692	Responding to Humanitarian Needs and Strengthening Resilience	4	4 498 001
Mauritania	PRRO	200640	Protecting Livelihoods, Reducing Undernutrition, and Building Resilience through Safety Nets, Asset Creation and Skills Development	1	293 582

ANNEX III: IMMEDIATE RESPONSE ACCOUNT REVOLVED FUNDS (2017)					
Recipient	Project type	Project/CPB	Project title	Number of revolving transactions	Amount revolved (USD) excluding ISC
Nepal	EMOP	200668	Emergency Food Assistance to Populations Affected by the Earthquake in Nepal	1	3 614 052
Nepal	IR-EMOP	200983	Karnali Drought Response	1	35 435
Niger	PRRO	200583	Enhancing the Resilience of Chronically Vulnerable Populations in Niger	1	42 058
Niger	PRRO	200961	Strengthening resilience in Niger through an integrated multi-sector and multi-partner safety net approach	3	3 049 112
Nigeria	IR-EMOP	200969	Life-Saving Support to Highly Food-Insecure Young Children Affected by Conflict and Insecurity in North-Eastern Nigeria	1	12 379
West Africa	EMOP	200777	Providing Life-Saving Support to Households in Cameroon, Chad and Niger Directly Affected by Insecurity in Northern Nigeria	8	15 000 000
West Africa	EMOP	200799	Critical Support to Populations Affected by the Ongoing Crisis in the Central African Republic and its Regional Impact	5	6 948 783
West Africa	IR-EMOP	201036	Targeted support to flood- and windstorm-affected households	1	58 027
Southern Africa	EPR	200979	Support to the Southern African Development Community (SADC) El Niño Logistics and Coordination Centre	1	11 194
Latin America and the Caribbean	IR-EMOP	201030	Assistance to Victims of Hurricane Matthew in the Caribbean	2	434 899
Latin America and the Caribbean	IR-EMOP	201104	Assistance to Victims of Hurricane Irma in the Western Caribbean	2	84 988
Latin America and the Caribbean	PRRO	200490	Restoring Food Security and Livelihoods through Assistance for Vulnerable Groups Affected by Recurrent Shocks in El Salvador, Guatemala, Honduras and Nicaragua	2	918 425

ANNEX III: IMMEDIATE RESPONSE ACCOUNT REVOLVED FUNDS (2017)					
Recipient	Project type	Project/CPB	Project title	Number of revolving transactions	Amount revolved (USD) excluding ISC
Latin America and the Caribbean	SOP	201106	Special Operations for Supply Chain and Emergency Telecommunications Augmentation and Coordination in Support of the Eastern Caribbean Islands Impacted by Hurricanes Irma and Jose	1	2 000 000
Pakistan	PRRO	200867	Transition: Towards Resilience and Zero Hunger in Pakistan	1	2 239 044
Philippines	IR-EMOP	201084	Immediate response to people affected by Armed Conflict in Marawi City	1	443
Congo	EMOP	201066	Assistance to Displaced and Affected Population: District of Pool	2	622 722
Congo	IR-EMOP	201039	Assistance to Displaced Populations in the Pool Department	1	467 289
Democratic Republic of the Congo	PRRO	200147	Assistance to Congolese Refugees from DRC in the Likouala Province of the Republic of the Congo	1	138 291
Rwanda	PRRO	200744	Food and Nutrition Assistance to Refugees and Returnees	3	1 500 000
Sierra Leone	IR-EMOP	201097	Emergency Assistance to Communities Affected by Mudslide and Floods in Sierra Leone	1	555 471
Somalia	PRRO	200844	Reducing Malnutrition and Strengthening Resilience to Shocks for a Food-Secure Somalia	21	34 234 544
South Sudan	IR-EMOP	201013	Emergency Response to Crisis in South Sudan	2	251 441
Sri Lanka	EPR	201064	Specific Preparedness Activities in Sri Lanka due to severe Drought Impact	1	11 891
Swaziland	IR-EMOP	200954	Emergency Assistance to Vulnerable Households Affected by El Niño-Induced Drought in Swaziland	1	809
United Republic of Tanzania	PRRO	200603	Food Assistance to Refugees in North-Western Tanzania	3	1 205 832

ANNEX III: IMMEDIATE RESPONSE ACCOUNT REVOLVED FUNDS (2017)					
Recipient	Project type	Project/CPB	Project title	Number of revolving transactions	Amount revolved (USD) excluding ISC
Uganda	EPR	201048	Preparedness for Refugee Influx from South Sudan into Northeast Uganda (Karamoja region)	1	25 841
Uganda	IR-EMOP	201010	Uganda Country Office Response to South Sudan Refugee Influx	1	31 969
Uganda	PRRO	200852	Food Assistance to Vulnerable Households in Uganda	8	8 964 825
Yemen	EMOP	200890	Emergency Food Assistance to the Food-Insecure and Conflict-Affected people in Yemen	5	6 547 043
Zambia	EPR	200911	Increased Monitoring Systems in Anticipation of El Nino Impact in 2016 in Zambia	1	145 193
Grand Total					114 458 332

ANNEX IV: WORKING CAPITAL FINANCING FACILITY ALLOCATIONS					
Recipient	Project type	Project/CPB	Project title	Date of approval	Approved allocation (USD) excluding ISC
Internal Project Lending advances					
Uganda	PRRO	200852	Food Assistance to Vulnerable Households in Uganda	03-Jan-17	7 476 635
West Africa/Southern Africa	EMOP	200799	Critical Support to Populations Affected by the Ongoing Crisis in the Central African Republic and its Regional Impact	06-Jan-17	739 645
West Africa	EMOP	200777	Providing Life-Saving Support to Households in Cameroon, Chad and Niger Directly Affected by Insecurity in Northern Nigeria	06-Jan-17	23 364 485
Madagascar	PRRO	200735	Response to Food Security and Nutrition Needs of Population Affected by Natural Disasters and Resilience Building of Food Insecure Communities of Madagascar	10-Jan-17	2 018 690
United Republic of Tanzania	PRRO	200603	Food Assistance to Refugees in North-Western Tanzania	16-Jan-17	4 672 897
Syrian Arab Republic	PRRO	200988	Assistance to the population affected by unrest in the Syrian Arab Republic	18-Jan-17	13 155 035
Central African Republic	SOP	201045	Provision of Humanitarian Air Services in the Central African Republic	25-Jan-17	384 115
Rwanda	PRRO	200744	Food and Nutrition Assistance to Refugees and Returnees	26-Jan-17	1 401 870
Middle East, North Africa, Eastern Europe and Central Asia	PRRO	200987	Food Assistance to Refugees and Vulnerable Populations in Jordan, Lebanon, Iraq, Turkey and Egypt affected by the unrest in the Syrian Arab Republic	27-Jan-17	14 498 725
Sierra Leone	PRRO	200938	Rebuilding food and nutrition security and strengthening disaster management capabilities in Sierra Leone	31-Jan-17	1 425 367
Iraq	EMOP	200677	Emergency Assistance to Populations Affected by the Iraq Crisis	03-Feb-17	3 959 383
Middle East, North Africa, Eastern Europe and Central Asia	PRRO	200987	Food Assistance to Refugees and Vulnerable Populations in Jordan, Lebanon, Iraq, Turkey and Egypt affected by the unrest in the Syrian Arab Republic	03-Feb-17	11 435 236

ANNEX IV: WORKING CAPITAL FINANCING FACILITY ALLOCATIONS					
Recipient	Project type	Project/CPB	Project title	Date of approval	Approved allocation (USD) excluding ISC
Swaziland	EMOP	200974	Emergency Assistance to Drought-Affected Population in Swaziland	07-Feb-17	815 000
Sudan	SOP	201043	Provision of Humanitarian Air Services in the Republic of South Sudan	07-Feb-17	422 217
South Sudan	EMOP	200859	Emergency Operation in Response to Conflict in South Sudan	07-Feb-17	9 387 162
Sudan	SOP	201043	Provision of Humanitarian Air Services in the Republic of South Sudan	07-Feb-17	2 841 121
Syrian Arab Republic	PRRO	200988	Assistance to the population affected by unrest in the Syrian Arab Republic	07-Feb-17	99 492 314
Algeria	PRRO	200301	Assistance to Western Saharan Refugees	07-Feb-17	797 933
Iraq	EMOP	200677	Emergency Assistance to Populations Affected by the Iraq Crisis	08-Feb-17	7 733 856
Middle East, North Africa, Eastern Europe and Central Asia	PRRO	200987	Food Assistance to Refugees and Vulnerable Populations in Jordan, Lebanon, Iraq, Turkey and Egypt affected by the unrest in the Syrian Arab Republic	08-Feb-17	69 535 324
West Africa/Southern Africa	EMOP	200799	Critical Support to Populations Affected by the Ongoing Crisis in the Central African Republic and its Regional Impact	08-Feb-17	506 660
Syrian Arab Republic	SOP	200788	Logistics and Emergency Telecommunications Augmentation and Coordination to Support Humanitarian Operations in Yemen	08-Feb-17	1 496 125
Rwanda	PRRO	200744	Food and Nutrition Assistance to Refugees and Returnees	17-Feb-17	897 675
Afghanistan	SOP	200870	Provision of Humanitarian Air Services in Nigeria	17-Feb-17	826 139
Middle East, North Africa, Eastern Europe and Central Asia	PRRO	200987	Food Assistance to Refugees and Vulnerable Populations in Jordan, Lebanon, Iraq, Turkey and Egypt affected by the unrest in the Syrian Arab Republic	20-Feb-17	40 159 709
West Africa	EMOP	200777	Providing Life-Saving Support to Households in Cameroon, Chad and Niger Directly Affected by Insecurity in Northern Nigeria	21-Feb-17	3 637 850

ANNEX IV: WORKING CAPITAL FINANCING FACILITY ALLOCATIONS					
Recipient	Project type	Project/CPB	Project title	Date of approval	Approved allocation (USD) excluding ISC
West Africa	EMOP	200777	Providing Life-Saving Support to Households in Cameroon, Chad and Niger Directly Affected by Insecurity in Northern Nigeria	21-Feb-17	949 990
Afghanistan	PRRO	200447	Assistance to Address Food Insecurity and Undernutrition	21-Feb-17	1 068 498
West Africa	EMOP	200777	Providing Life-Saving Support to Households in Cameroon, Chad and Niger Directly Affected by Insecurity in Northern Nigeria	21-Feb-17	6 283 725
Zimbabwe	PRRO	200944	Building Resilience for Zero Hunger	24-Feb-17	760 256
Malawi	PRRO	200692	Responding to Humanitarian Needs and Strengthening Resilience	27-Feb-17	1 488 887
Yemen	SOP	200841	Logistics and Emergency Telecommunications Augmentation and Coordination to Support Humanitarian Operations in Yemen	28-Feb-17	1 869 158
West Africa/Southern Africa	EMOP	200799	Critical Support to Populations Affected by the Ongoing Crisis in the Central African Republic and its Regional Impact	01-Mar-17	1 703 139
Chad	SOP	201044	Provision for Humanitarian Air Services in Chad	01-Mar-17	1 230 137
Pakistan	PRRO	200867	Transition: Towards Resilience and Zero Hunger in Pakistan	01-Mar-17	14 307 692
State of Palestine	PRRO	200709	Food Assistance for the Food-Insecure Populations in the West Bank and Gaza Strip	02-Mar-17	598 450
West Africa	EMOP	200777	Providing Life-Saving Support to Households in Cameroon, Chad and Niger Directly Affected by Insecurity in Northern Nigeria	06-Mar-17	1 944 962
Central African Republic	SOP	201045	Provision of Humanitarian Air Services in the Central African Republic	06-Mar-17	2 102 804
Democratic Republic of the Congo	PRRO	200832	Targeted Food Assistance to Victims of Armed Conflicts and Other Vulnerable Groups in the Democratic Republic of the Congo	06-Mar-17	11 569 057
Kenya	PRRO	200736	Bridging Relief and Resilience in the Arid and Semi-Arid Lands	07-Mar-17	4 132 121
Uganda	PRRO	200852	Food Assistance to Vulnerable Households in Uganda	09-Mar-17	3 349 155

ANNEX IV: WORKING CAPITAL FINANCING FACILITY ALLOCATIONS					
Recipient	Project type	Project/CPB	Project title	Date of approval	Approved allocation (USD) excluding ISC
Yemen	EMOP	201068	Immediate, Integrated and Sustained Response to Avert Famine in Yemen	16-Mar-17	15 000 000
West Africa	EMOP	200777	Providing Life-Saving Support to Households in Cameroon, Chad and Niger Directly Affected by Insecurity in Northern Nigeria	20-Mar-17	1 268 113
Nigeria	SOP	201032	Logistics and Emergency Telecommunications Sector Coordination and Services to augment the Humanitarian Response in North East Nigeria	22-Mar-17	187 016
Lesotho	PRRO	200980	Support to Drought Affected Populations	23-Mar-17	1 121 495
El Salvador	CPB	SV01	CPB El Salvador 2017-2021	24-Mar-17	371 652
Sudan	PRRO	200808	Support for Food Security and Nutrition for Conflict-Affected and Chronically Vulnerable Populations	24-Mar-17	2 084 564
Somalia	PRRO	200844	Reducing Malnutrition and Strengthening Resilience to Shocks for a Food-Secure Somalia	27-Mar-17	4 982 097
Uganda	PRRO	200852	Food Assistance to Vulnerable Households in Uganda	27-Mar-17	11 214 953
West Africa	EMOP	200777	Providing Life-Saving Support to Households in Cameroon, Chad and Niger Directly Affected by Insecurity in Northern Nigeria	27-Mar-17	7 200 000
Malawi	PRRO	200692	Responding to Humanitarian Needs and Strengthening Resilience	28-Mar-17	992 730
Kenya	PRRO	200736	Bridging Relief and Resilience in the Arid and Semi-Arid Lands	29-Mar-17	839 622
Yemen	SOP	200841	Logistics and Emergency Telecommunications Augmentation and Coordination to Support Humanitarian Operations in Yemen	29-Mar-17	555 883
El Salvador	CPB	SV01	CPB El Salvador 2017-2021	29-Mar-17	700 935
Syrian Arab Republic	PRRO	200988	Assistance to the population affected by unrest in the Syrian Arab Republic	29-Mar-17	33 200 000
State of Palestine	PRRO	200709	Food Assistance for the Food-Insecure Populations in the West Bank and Gaza Strip	03-Apr-17	1 496 125

ANNEX IV: WORKING CAPITAL FINANCING FACILITY ALLOCATIONS					
Recipient	Project type	Project/CPB	Project title	Date of approval	Approved allocation (USD) excluding ISC
Chad	PRRO	200713	Building Resilience, Protecting Livelihoods and Reducing Malnutrition of Refugees, Returnees and other Vulnerable People	10-Apr-17	6 561 772
Sudan	PRRO	200808	Support for Food Security and Nutrition for Conflict-Affected and Chronically Vulnerable Populations	12-Apr-17	7 524 830
West Africa	EMOP	200777	Providing Life-Saving Support to Households in Cameroon, Chad and Niger Directly Affected by Insecurity in Northern Nigeria	13-Apr-17	588 957
West Africa	EMOP	200777	Providing Life-Saving Support to Households in Cameroon, Chad and Niger Directly Affected by Insecurity in Northern Nigeria	18-Apr-17	1 773 181
Swaziland	PRRO	200974	Emergency Assistance to Drought-Affected Population in Swaziland	21-Apr-17	992 122
Iran (Islamic Republic of)	PRRO	200310	Food Assistance and Education Incentive for Afghan and Iraqi Refugees in the Islamic Republic of Iran	28-Apr-17	793 698
Latin America and the Caribbean	PRRO	200490	Restoring Food Security and Livelihoods through Assistance for Vulnerable Groups Affected by Recurrent Shocks in El Salvador, Guatemala, Honduras and Nicaragua	03-May-17	841 120
Yemen	EMOP	201068	Immediate, Integrated and Sustained Response to Avert Famine in Yemen	03-May-17	10 678 444
West Africa	EMOP	200777	Providing Life-Saving Support to Households in Cameroon, Chad and Niger Directly Affected by Insecurity in Northern Nigeria	04-May-17	30 088 226
Uganda	PRRO	200852	Food Assistance to Vulnerable Households in Uganda	05-May-17	8 037 383
Algeria	PRRO	200301	Assistance to Western Saharan Refugees	11-May-17	2 976 361
South Sudan	EMOP	200859	Emergency Operation in Response to Conflict in South Sudan	12-May-17	9 445 006
Somalia	PRRO	200844	Reducing Malnutrition and Strengthening Resilience to Shocks for a Food-Secure Somalia	15-May-17	2 200 000

ANNEX IV: WORKING CAPITAL FINANCING FACILITY ALLOCATIONS					
Recipient	Project type	Project/CPB	Project title	Date of approval	Approved allocation (USD) excluding ISC
Syrian Arab Republic	PRRO	200988	Assistance to the population affected by unrest in the Syrian Arab Republic	15-May-17	55 990 461
Chad	PRRO	200713	Building Resilience, Protecting Livelihoods and Reducing Malnutrition of Refugees, Returnees and other Vulnerable People	17-May-17	2 407 490
Afghanistan	PRRO	200447	Assistance to Address Food Insecurity and Undernutrition	17-May-17	14 018 692
Middle East, North Africa, Eastern Europe and Central Asia	PRRO	200987	Food Assistance to Refugees and Vulnerable Populations in Jordan, Lebanon, Iraq, Turkey and Egypt affected by the unrest in the Syrian Arab Republic	22-May-17	30 442 236
Democratic Republic of the Congo	SOP	201016	Provision of Humanitarian Air Services in Nigeria	19-May-17	2 102 803
Bangladesh	CPB	BD01	CPB Bangladesh 2017-2020	23-May-17	280 373
Iraq	EMOP	200677	Emergency Assistance to Populations Affected by the Iraq Crisis	25-May-17	20 200 463
Yemen	EMOP	201068	Immediate, Integrated and Sustained Response to Avert Famine in Yemen	02-Jun-17	31 019 108
Burkina Faso	PRRO	200793	Developing Resilience and Fighting Malnutrition	02-Jun-17	747 663
Niger	PRRO	200961	Strengthening resilience in Niger through an integrated multi-sector and multi-partner safety net approach	02-Jun-17	202 949
Senegal	PRRO	200681	Senegal PRRO 200681 Protecting lives and promoting resilience of food-insecure communities including conflict affected Casamance	02-Jun-17	162 359
Chad	PRRO	200713	Building Resilience, Protecting Livelihoods and Reducing Malnutrition of Refugees, Returnees and other Vulnerable People	02-Jun-17	4 822 563
Zimbabwe	CPB	ZW01	CPB Zimbabwe (2017-2021)	02-Jun-17	467 290
Somalia	PRRO	200844	Reducing Malnutrition and Strengthening Resilience to Shocks for a Food-Secure Somalia	6-Jun-17	20 000 000
Uganda	PRRO	200852	Food Assistance to Vulnerable Households in Uganda	12-Jun-17	1 597 000

ANNEX IV: WORKING CAPITAL FINANCING FACILITY ALLOCATIONS					
Recipient	Project type	Project/CPB	Project title	Date of approval	Approved allocation (USD) excluding ISC
Chad	PRRO	200713	Building Resilience, Protecting Livelihoods and Reducing Malnutrition of Refugees, Returnees and other Vulnerable People	21-Jun-17	1 903 768
Iraq	EMOP	200677	Emergency Assistance to Populations Affected by the Iraq Crisis	21-Jun-17	17 182 714
Kenya	CP	200680	CP-Kenya (2014–2018)	22-Jun-17	1 488 184
Congo	CP	200648	CP-Congo-(2015–2018)	27-Jun-17	719 641
Middle East, North Africa, Eastern Europe and Central Asia	PRRO	200987	Food Assistance to Refugees and Vulnerable Populations in Jordan, Lebanon, Iraq, Turkey and Egypt affected by the unrest in the Syrian Arab Republic	29-Jun-17	5 599 104
Madagascar	PRRO	200735	Response to Food Security and Nutrition Needs of Population Affected by Natural Disasters and Resilience Building of Food-Insecure Communities of Madagascar	30-Jun-17	751 974
Madagascar	CP	200733	CP-Madagascar-(2015-2019)	30-Jun-17	1 986 518
Mali	PRRO	200719	Saving Lives, Reducing Malnutrition and Rebuilding Livelihoods	30-Jun-17	1 747 809
Somalia	PRRO	200844	Reducing Malnutrition and Strengthening Resilience to Shocks for a Food-Secure Somalia	30-Jun-17	9 634 839
Sudan	CPB	SD01	CPB-Sudan (2017–2018)	4-Jul-17	5 134 998
Middle East, North Africa, Eastern Europe and Central Asia	PRRO	200987	Food Assistance to Refugees and Vulnerable Populations in Jordan, Lebanon, Iraq, Turkey and Egypt affected by the unrest in the Syrian Arab Republic	4-Jul-17	4 030 521
Chad	PRRO	200713	Building Resilience, Protecting Livelihoods and Reducing Malnutrition of Refugees, Returnees and other Vulnerable People	10-Jul-17	3 189 690
United Republic of Tanzania	CPB	TZ01	CPB-Tanzania (2017–2021)	12-Jul-17	761 058
Uganda	PRRO	200852	Food Assistance to Vulnerable Households in Uganda	12-Jul-17	11 214 953
Chad	SOP	201044	Provision for Humanitarian Air Services in Chad	24-Jul-17	350 467

ANNEX IV: WORKING CAPITAL FINANCING FACILITY ALLOCATIONS					
Recipient	Project type	Project/CPB	Project title	Date of approval	Approved allocation (USD) excluding ISC
Ethiopia	PRRO	200712	Responding to Humanitarian Crises and Enhancing Resilience to Food Insecurity	25-Jul-17	35 514 018
South Sudan	SOP	200778	Logistics Cluster Activities in Support of the Humanitarian Community in South Sudan	26-Jul-17	5 240 632
Mali	SOP	201047	Provision of Humanitarian Air Services in Nigeria	27-Jul-17	560 747
Mali	PRRO	200719	Saving Lives, Reducing Malnutrition and Rebuilding Livelihoods	28-Jul-17	3 145 124
Yemen	SOP	200841	Logistics and Emergency Telecommunications Augmentation and Coordination to Support Humanitarian Operations in Yemen	28-Jul-17	1 275 876
Kenya	PRRO	200736	Bridging Relief and Resilience in the Arid and Semi-Arid Lands	28-Jul-17	4 672 897
Rwanda	PRRO	200744	Food and Nutrition Assistance to Refugees and Returnees	28-Jul-17	3 271 028
Zimbabwe	CPB	ZW01	CPB-Zimbabwe (2017–2021)	28-Jul-17	7 030 573
Middle East, North Africa, Eastern Europe and Central Asia	PRRO	200987	Food Assistance to Refugees and Vulnerable Populations in Jordan, Lebanon, Iraq, Turkey and Egypt affected by the unrest in the Syrian Arab Republic	28-Jul-17	22 429 907
Syrian Arab Republic	PRRO	200988	Assistance to the population affected by unrest in the Syrian Arab Republic	4-Aug-17	3 189 690
Uganda	PRRO	200852	Food Assistance to Vulnerable Households in Uganda	7-Aug-17	2 803 738
Somalia	PRRO	200844	Reducing Malnutrition and Strengthening Resilience to Shocks for a Food-Secure Somalia	8-Aug-17	22 484 882
Angola	EMOP	201083	Emergency Food Assistance in Angola for Conflict Affected Refugees	9-Aug-17	3 294 392
Afghanistan	PRRO	200447	Assistance to Address Food Insecurity and Undernutrition	14-Aug-17	6 728 972
Djibouti	PRRO	200824	Enhancing the resilience of chronically vulnerable rural, urban and refugee populations and reducing undernutrition in Djibouti	16-Aug-17	700 831

ANNEX IV: WORKING CAPITAL FINANCING FACILITY ALLOCATIONS					
Recipient	Project type	Project/CPB	Project title	Date of approval	Approved allocation (USD) excluding ISC
Latin America and the Caribbean	PRRO	200490	Restoring Food Security and Livelihoods through Assistance for Vulnerable Groups Affected by Recurrent Shocks in El Salvador, Guatemala, Honduras and Nicaragua	16-Aug-17	1 051 362
Latin America and the Caribbean	PRRO	200490	Restoring Food Security and Livelihoods through Assistance for Vulnerable Groups Affected by Recurrent Shocks in El Salvador, Guatemala, Honduras and Nicaragua	16-Aug-17	2 453 271
Niger	PRRO	200961	Strengthening resilience in Niger through an integrated multi-sector and multi-partner safety net approach	16-Aug-17	2 056 074
Chad	SOP	201044	Provision for Humanitarian Air Services in Chad	17-Aug-17	315 420
Myanmar	PRRO	200299	Supporting Transition in Myanmar by Reducing Food Insecurity	17-Aug-17	4 579 268
West Africa/Southern Africa	EMOP	200799	Critical Support to Populations Affected by the Ongoing Crisis in the Central African Republic and its Regional Impact	18-Aug-17	1 495 327
Yemen	EMOP	201068	Immediate, Integrated and Sustained Response to Avert Famine in Yemen	21-Aug-17	15 700 935
Malawi	PRRO	200692	Responding to Humanitarian Needs and Strengthening Resilience	23-Aug-17	10 514 018
Kenya	PRRO	200737	Food Assistance to Refugees	23-Aug-17	2 102 803
West Africa	EMOP	200777	Providing Life-Saving Support to Households in Cameroon, Chad and Niger Directly Affected by Insecurity in Northern Nigeria	24-Aug-17	50 003 736
West Africa/Southern Africa	EMOP	200799	Critical Support to Populations Affected by the Ongoing Crisis in the Central African Republic and its Regional Impact	24-Aug-17	4 336 448
Kenya	PRRO	200736	Bridging Relief and Resilience in the Arid and Semi-Arid Lands	24-Aug-17	1 765 439
Central African Republic	SOP	201045	Provision of Humanitarian Air Services in the Central African Republic	24-Aug-17	1 401 869
Ethiopia	PRRO	200700	Food Assistance for Eritrean, South Sudanese, Sudanese and Somali Refugees	24-Aug-17	14 953 271

ANNEX IV: WORKING CAPITAL FINANCING FACILITY ALLOCATIONS					
Recipient	Project type	Project/CPB	Project title	Date of approval	Approved allocation (USD) excluding ISC
Ethiopia	PRRO	200712	Responding to Humanitarian Crises and Enhancing Resilience to Food Insecurity	25-Aug-17	13 240 795
Kenya	PRRO	200736	Bridging Relief and Resilience in the Arid and Semi-Arid Lands	25-Aug-17	6 542 056
Yemen	SOP	200841	Logistics and Emergency Telecommunications Augmentation and Coordination to Support Humanitarian Operations in Yemen	29-Aug-17	5 607 477
West Africa	EMOP	200777	Providing Life-Saving Support to Households in Cameroon, Chad and Niger Directly Affected by Insecurity in Northern Nigeria	29-Aug-17	2 126 814
Sudan	CPB	SD01	CPB-Sudan (2017–2018)	30-Aug-17	773 411
Pakistan	PRRO	200867	Transition: Towards Resilience and Zero Hunger in Pakistan	31-Aug-17	2 077 268
Yemen	EMOP	201068	Immediate, Integrated and Sustained Response to Avert Famine in Yemen	31-Aug-17	19 419 832
Myanmar	PRRO	200299	Supporting Transition in Myanmar by Reducing Food Insecurity	4-Sep-17	402 600
United Republic of Tanzania	CPB	TZ01	CPB-Tanzania (2017–2021)	5-Sep-17	4 614 981
Kenya	PRRO	200736	Bridging Relief and Resilience in the Arid and Semi-Arid Lands	6-Sep-17	3 551 617
West Africa	EMOP	200777	Providing Life-Saving Support to Households in Cameroon, Chad and Niger Directly Affected by Insecurity in Northern Nigeria	7-Sep-17	2 126 814
Nepal	EMOP	201101	Emergency cash and nutrition response to critically food insecure populations in severely flood affected districts of Southern Nepal	8-Sep-17	747 664
Nepal	EMOP	201101	Emergency cash and nutrition response to critically food insecure populations in severely flood affected districts of Southern Nepal	8-Sep-17	373 832
Nepal	EMOP	201101	Emergency cash and nutrition response to critically food insecure populations in severely flood affected districts of Southern Nepal	8-Sep-17	547 631
Haiti	PRRO	200618	Strengthening Emergency Preparedness and Resilience in Haiti	8-Sep-17	2 990 654

ANNEX IV: WORKING CAPITAL FINANCING FACILITY ALLOCATIONS					
Recipient	Project type	Project/CPB	Project title	Date of approval	Approved allocation (USD) excluding ISC
Uganda	PRRO	200852	Food Assistance to Vulnerable Households in Uganda	11-Sep-17	1 177 422
Uganda	PRRO	200852	Food Assistance to Vulnerable Households in Uganda	11-Sep-17	11 962 616
Sudan	CPB	SD01	CPB-Sudan (2017–2018)	13-Sep-17	7 300 000
Sudan	CPB	SD01	CPB-Sudan (2017–2018)	13-Sep-17	6 297 000
United Republic of Tanzania	CPB	TZ01	CPB-Tanzania (2017–2021)	15-Sep-17	3 891 237
Bangladesh	CPB	BD01	CPB-Bangladesh (2017–2020)	22-Sep-17	6 665 831
Congo	EMOP	201066	Assistance to Displaced and Affected Population: District of Pool	25-Sep-17	827 280
United Republic of Tanzania	CPB	TZ01	CPB-Tanzania (2017–2021)	25-Sep-17	253 686
Chad	PRRO	200713	Building Resilience, Protecting Livelihoods and Reducing Malnutrition of Refugees, Returnees and other Vulnerable People	25-Sep-17	7 252 133
Ethiopia	PRRO	200712	Responding to Humanitarian Crises and Enhancing Resilience to Food Insecurity	26-Sep-17	26 168 224
Middle East, North Africa, Eastern Europe and Central Asia	PRRO	200987	Food Assistance to Refugees and Vulnerable Populations in Jordan, Lebanon, Iraq, Turkey and Egypt affected by the unrest in the Syrian Arab Republic	3-Oct-17	2 372 246
Bangladesh	CPB	BD01	CPB-Bangladesh (2017–2020)	9-Oct-17	2 301 869
Rwanda	PRRO	200744	Food and Nutrition Assistance to Refugees and Returnees	12-Oct-17	99 742
Tajikistan	CPB	TJ01	CPB Tajikistan 2018-2019	19-Oct-17	1 505 209
Cuba	EMOP	201108	Food Assistance to Victims of Hurricane Irma in Cuba	31-Oct-17	307 659
Rwanda	PRRO	200744	Food and Nutrition Assistance to Refugees and Returnees	3-Nov-17	898 634
Mali	PRRO	200719	Saving Lives, Reducing Malnutrition and Rebuilding Livelihoods	3-Nov-17	991 888

ANNEX IV: WORKING CAPITAL FINANCING FACILITY ALLOCATIONS					
Recipient	Project type	Project/CPB	Project title	Date of approval	Approved allocation (USD) excluding ISC
Syrian Arab Republic	PRRO	200988	Assistance to the population affected by unrest in the Syrian Arab Republic	3-Nov-17	56 074 765
Burundi	PRRO	200655	Assistance to Refugees and Vulnerable Food-Insecure Populations	14-Nov-17	747 663
Yemen	EMOP	201068	Immediate, Integrated and Sustained Response to Avert Famine in Yemen	15-Nov-17	4 341 830
Middle East, North Africa, Eastern Europe and Central Asia	PRRO	200987	Food Assistance to Refugees and Vulnerable Populations in Jordan, Lebanon, Iraq, Turkey and Egypt affected by the unrest in the Syrian Arab Republic	16-Nov-17	1 869 159
Cuba	CPB	CU01	CPB-Cuba (2018–2018)	17-Nov-17	542 700
Latin America and the Caribbean	EMOP	201109	Emergency Food Assistance to Communities Affected by Hurricane Matthew in Cuba	21-Nov-17	1 051 401
Sudan	CPB	SD01	CPB-Sudan (2017–2018)	24-Nov-17	1 513 128
Democratic Republic of the Congo	CPB	CD01	CPB-Congo, Democratic Republic (2018–2020)	24-Nov-17	814 093
Cuba	EMOP	201108	Food Assistance to Victims of Hurricane Irma in Cuba	28-Nov-17	683 840
Sudan	CPB	SD01	CPB-Sudan (2017–2018)	29-Nov-17	434 183
Democratic Republic of the Congo	CPB	CD01	CPB-Congo, Democratic Republic (2018–2020)	1-Dec-17	1 217 335
Syrian Arab Republic	PRRO	200988	Assistance to the population affected by unrest in the Syrian Arab Republic	7-Dec-17	5 991 729
Somalia	PRRO	200844	Reducing Malnutrition and Strengthening Resilience to Shocks for a Food-Secure Somalia	19-Dec-17	21 682 243
State of Palestine	CPB	PS01	CPB-Palestine, State of (2018–2022)	22-Dec-17	747 664
Madagascar	CPB	MG01	CPB-Madagascar (2018–2019)	22-Dec-17	3 014 018

ANNEX IV: WORKING CAPITAL FINANCING FACILITY ALLOCATIONS					
Recipient	Project type	Project/CPB	Project title	Date of approval	Approved allocation (USD) excluding ISC
Turkey	CPB	TR01	CPB-Turkey (2018-2018)	29-Dec-17	6 196 262
Total Internal Project Lending advances					1 277 723 855
Macro Advance Financing advances					
Mali	PRRO	200719	Saving Lives, Reducing Malnutrition and Rebuilding Livelihoods	07-Feb-17	9 345 794
Ethiopia	PRRO	200700	Food Assistance for Eritrean, South Sudanese, Sudanese and Somali Refugees	07-Feb-17	18 691 589
Kenya	PRRO	200737	Food Assistance to Refugees	07-Feb-17	7 943 925
Total Macro Advance Financing advances					35 981 308
TOTAL WORKING CAPITAL FINANCING FACILITY ADVANCES					1 313 705 163
Corporate services advances					
Capital Budgeting Facility advances					
Mali	SA	SFPI-	Field Premises Improvement Facility	10-Mar-17	1 500 000
Logistics Execution Support System Special Account	SA	SLES-2000040	Logistics Execution Support System Special Account	23-Jan-17	2 550 000
Logistics Execution Support System Special Account	SA	SLES-2000040	Logistics Execution Support System Special Account	20-Apr-17	1 650 000
Total Capital Budgeting Facility advances					5 700 000
Fee-for-services advances					
Evaluation Special Account	SA	SAOE-2000039	Evaluation Special Account	03-Jan-17	13 975
Field Security Special Account	SA	SSEC-2000037	Field Security Special Account	13-Jan-17	367 762

ANNEX IV: WORKING CAPITAL FINANCING FACILITY ALLOCATIONS					
Recipient	Project type	Project/CPB	Project title	Date of approval	Approved allocation (USD) excluding ISC
Evaluation Special Account	SA	SAOE-2000039	Evaluation Special Account	01-Feb-17	37 170
Field and Emergency Special Account	SA	SICT-2000025	Field and Emergency Special Account	03-Feb-17	1 500 000
Wellness Programme Special Account	SA	SAWP-2000044	Wellness Programme Special Account	25-Apr-17	350 000
Information Technology Field-Based Recoveries Special Account	SA	SREC-2000036	Information Technology Field-Based Recoveries Special Account	22-Dec-17	2 110 000
Total fee-for-services advances					4 378 907
TOTAL CORPORATE SERVICES					10 078 907
GRAND TOTAL					1 323 784 070

Acronyms used in the document

EMOP	emergency operation
GCMF	Global Commodity Management Facility
IPL	internal project lending
IRA	Immediate Response Account
MAF	macro advance financing
PRRO	protracted relief and recovery operation
SHF	Smallholder farmer