

## BONY FISHES

## URANOSCOPIDAE

***Uranoscopus albesca* Regan, 1915**

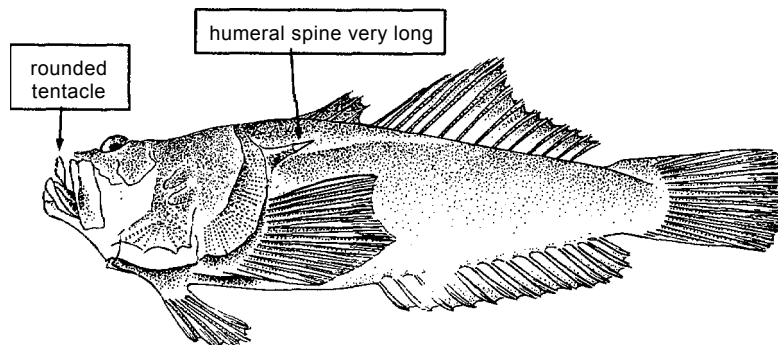
**FAO names** : **En** - Longspine stargazer;  
**Fr** - Uranoscope miou; **Sp** - Miracielo espinón.

**Size** : 35 cm.

**Fishing gear** : bottom trawls.

**Habitat** : burrowing in sandy and muddy bottoms from 30 to 350 m depth.

**Loc.name(s)** :

***Uranoscopus cadenati* Poll, 1959**

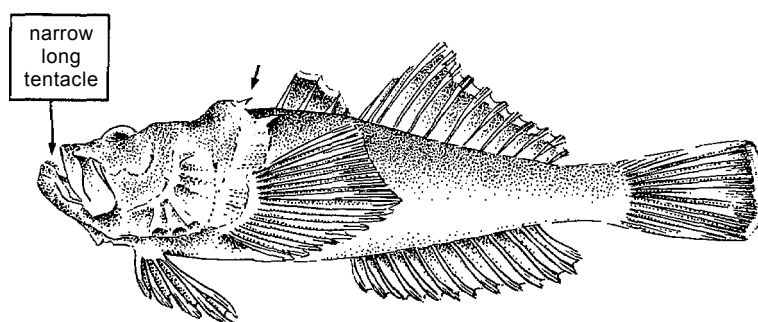
**FAO names** : **En** - West African stargazer;  
**Fr** - Uranoscope boeuf; **Sp** - Miracielo africano.

**Size** : 35 cm, possibly up to 50 cm.

**Fishing gear** : bottom trawls, bottom set nets.

**Habitat** : burrowing in sandy and muddy bottoms from 30 to at least 300 m depth.

**Loc.name(s)** :

***Uranoscopus polli* Cadenat, 1953**

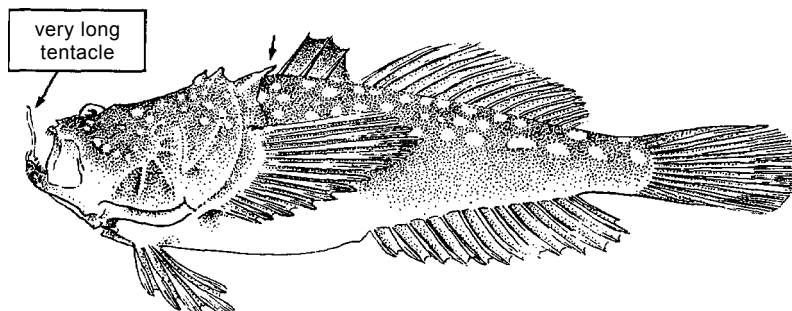
**FAO names** : **En** - White-spotted stargazer;  
**Fr** - Uranoscope à points blancs; **Sp** - Miracielo moteado.

**Size** : 35 cm.

**Fishing gear** : bottom trawls, bottom set nets.

**Habitat** : demersal between 25 and 50 m depth, burrowing in muddy and sandy bottoms.

**Loc.name(s)** :

***Xiphias gladius* Linnaeus, 1758**

## XIPHIIDAE

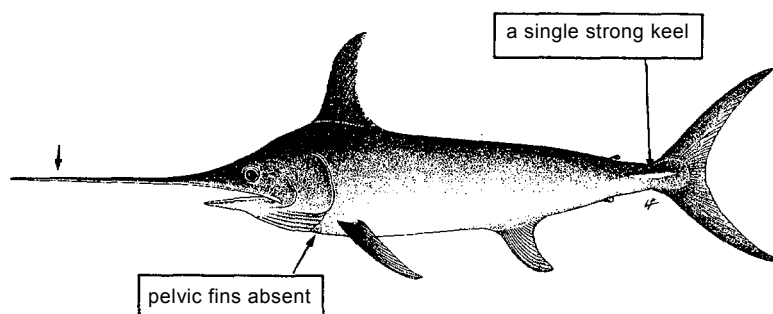
**FAO names** : **En** - Swordfish; **Fr** - Espadon;  
**Sp** - Pez espada.

**Size** : 450 cm, common to 220 cm.

**Fishing gear** : longlines, harpoons, trolling gear, drift gillnets.

**Habitat** : pelagic, from the surface to about 800 m depth; strongly migratory.

**Loc.name(s)** :



## BONY FISHES

## ZEIDAE

***Cyttopsis roseus*** (Lowe, 1843)

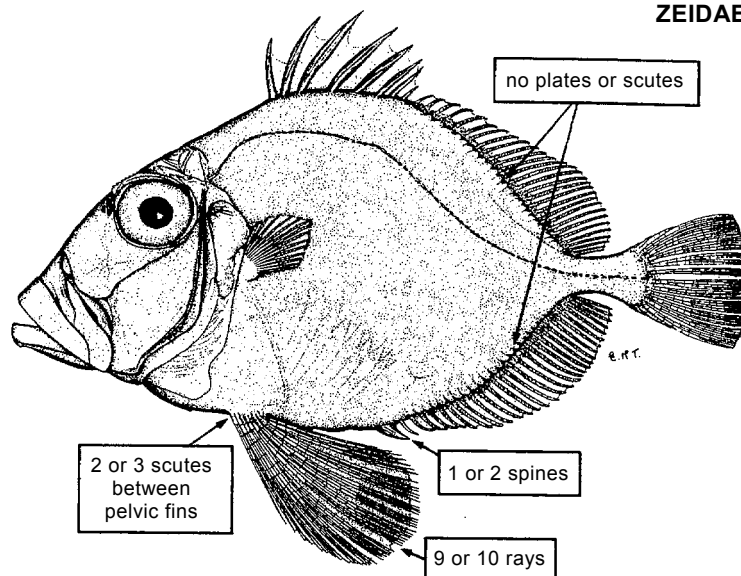
**FAO names** : **En** - Rosy dory; **Fr** - Saint-Pierre rosé; **Sp** - San Pedro rosado.

**Size** : 30 cm, common to 25 cm.

**Fishing gear** : bottom trawls.

**Habitat** : near the bottom, on the continental shelf to a depth of 600 m.

**Loc.name(s)** :

***Zenopsis conchifer*** (Lowe, 1852)

**Synonyms** : *Zeus conchifer* (Lowe, 1852); *Zeus ocellatus* Storer, 1859.

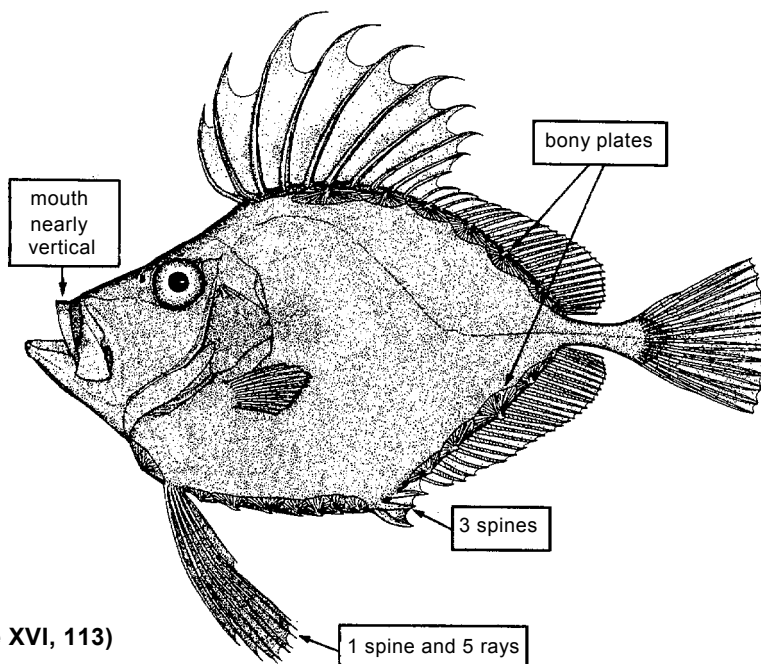
**FAO names** : **En** - Silvery John dory; **Fr** - Saint Pierre argenté; **Sp** - San Pedro plateado.

**Size** : 75 cm, common to 50 cm.

**Fishing gear** : bottoms trawls.

**Habitat** : on sandy and muddy bottoms from 150 to 300 m depth.

**Loc.name(s)** :



(see Plate XVI, 113)

***Zeus faber*** Linnaeus, 1758

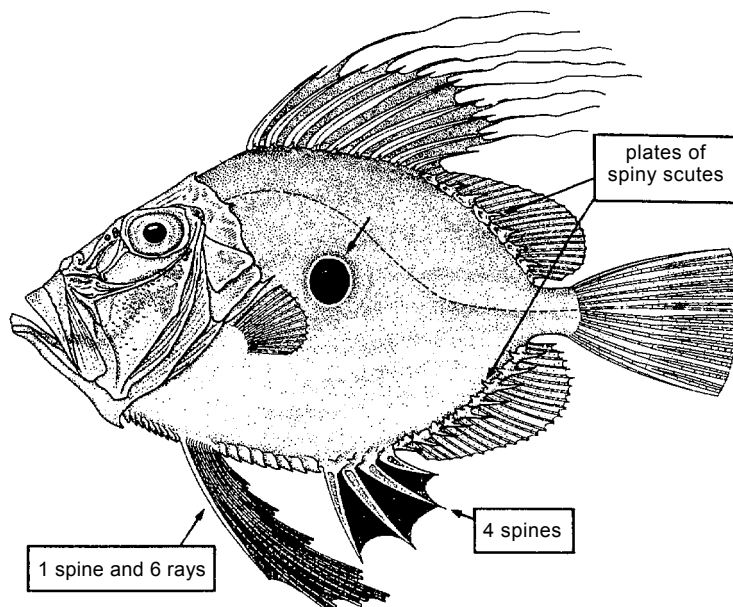
**FAO names** : **En** - John dory; **Fr** - Saint-Pierre; **Sp** - Pez de San Pedro.

**Size** : 65 cm, common to 40 cm.

**Fishing gear** : bottoms trawls.

**Habitat** : demersal from 60 to 250 m depth.

**Loc.name(s)** :



(see Plate XVI, 114)

