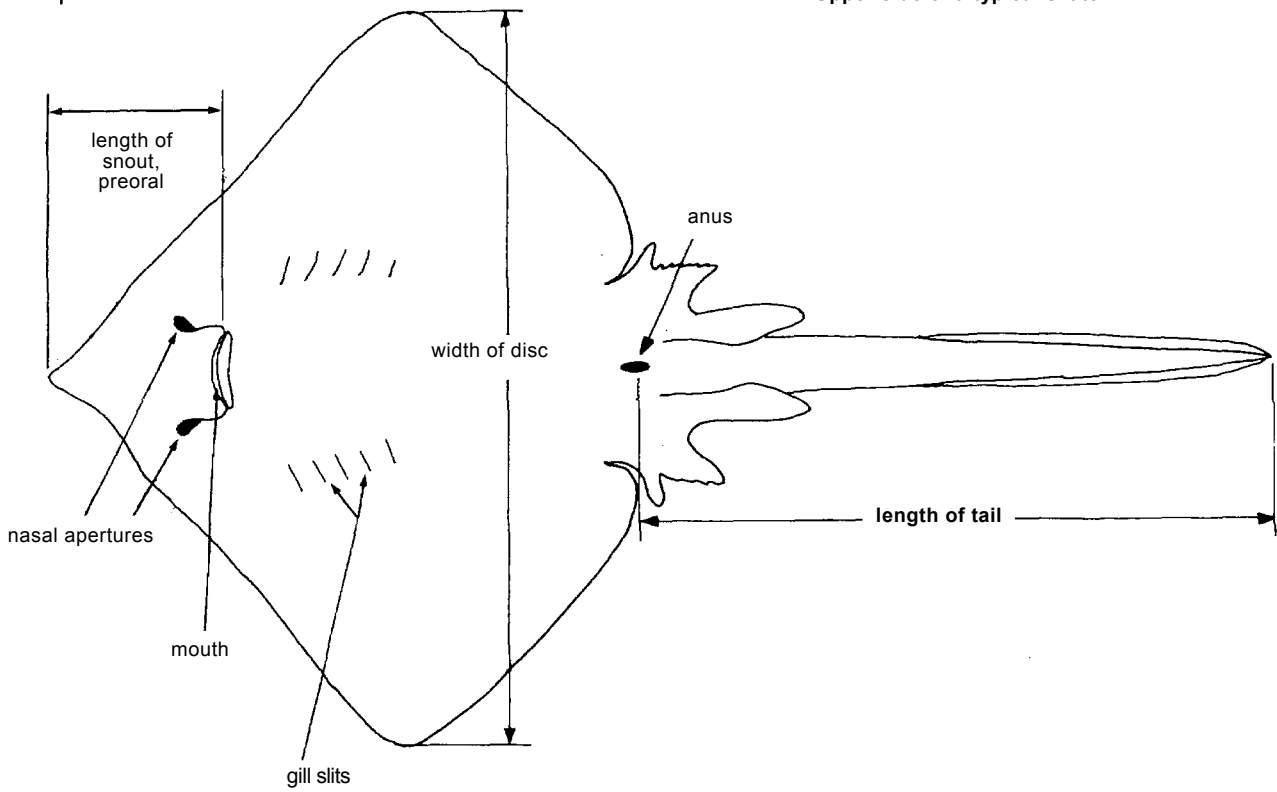
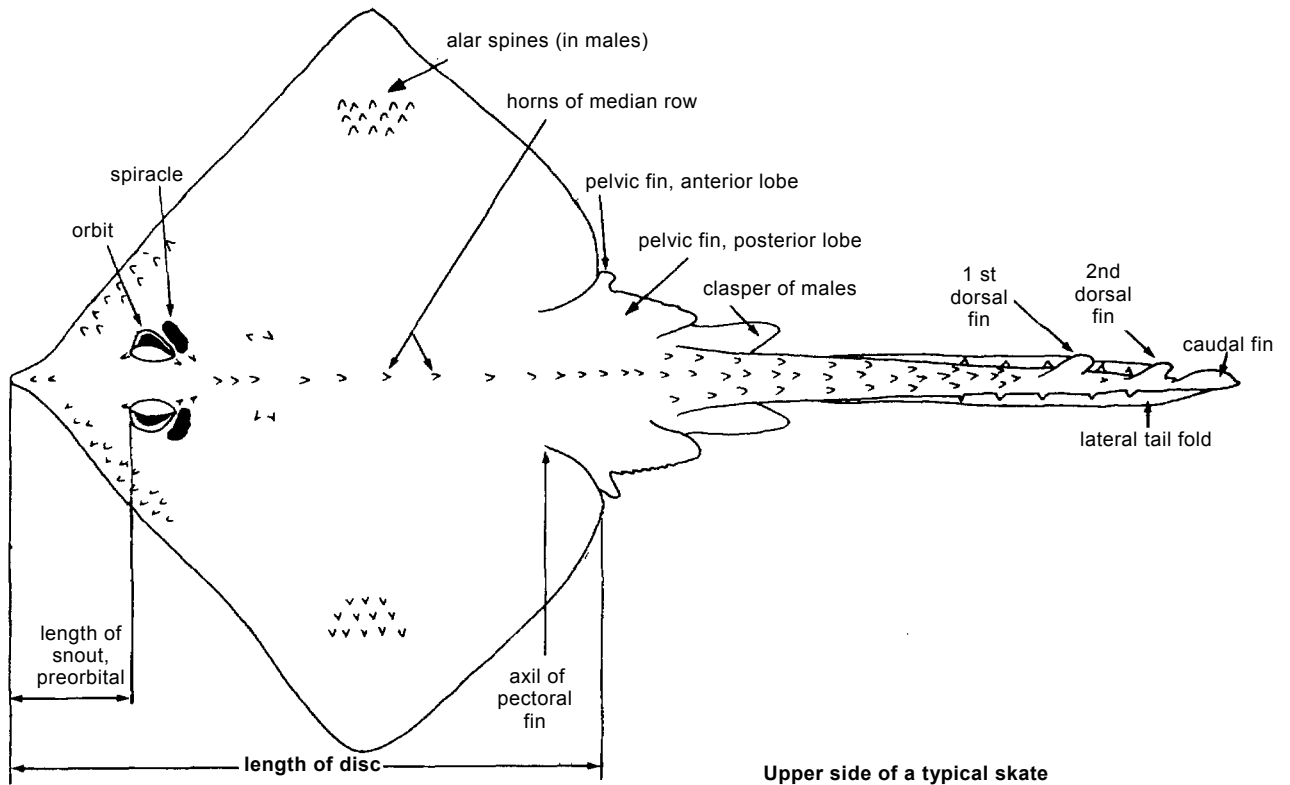


BATOID FISHES

TECHNICAL TERMS AND PRINCIPAL MEASUREMENTS USED

(Straight-line distances only)



BATOID FISHES

GUIDE TO FAMILIES

The purpose of this guide is to ensure correct identification of all families (and their respective genera) occurring in the Gulf of Guinea.

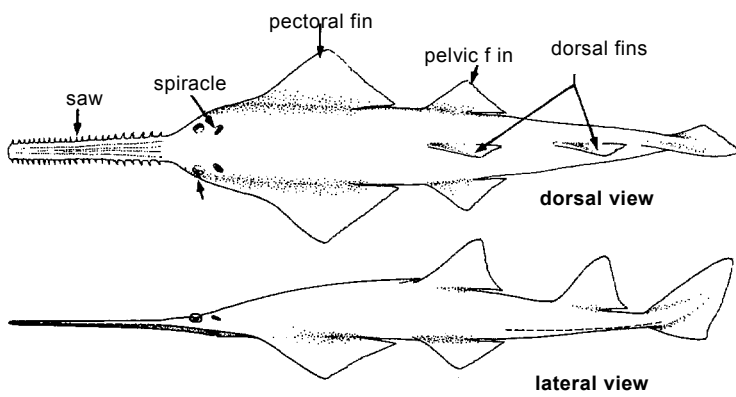
Note:

Page numbers following the family names, when present, lead to information on species of interest to fisheries.

All distinctive characters used here apply only to species occurring in the Gulf of Guinea.

PRISTIDAE Sawfishes **page 160**

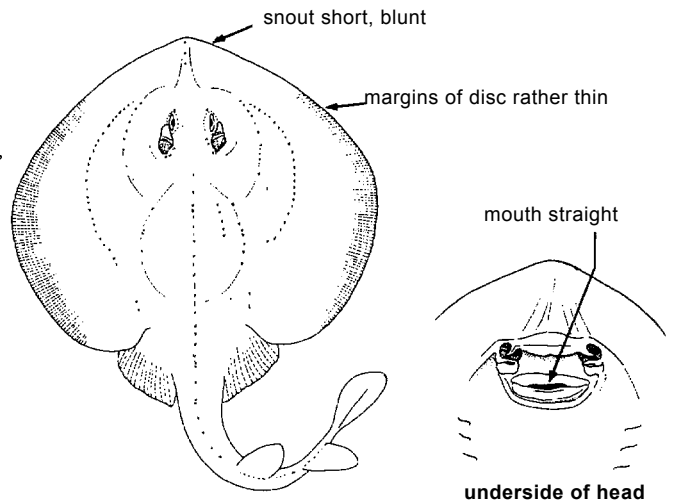
Total length to 600 cm; coastal marine and brackish waters, rarely in freshwaters; usually to 10 m depth; demersal.



Pristis

PLATYRHINIDAE Thornback guitarfishes

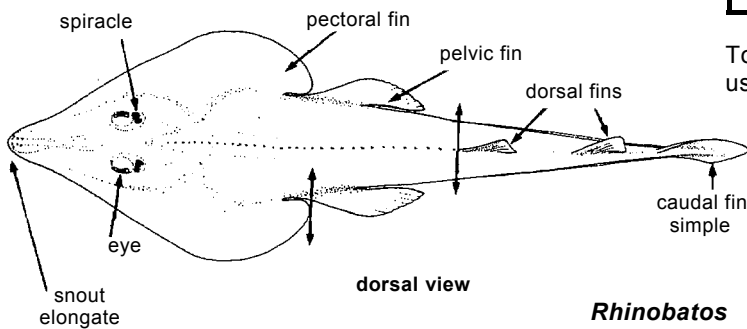
Total length to about 1 m; mainly coastal waters, but also offshore around islands, to 300 m depth; demersal. A single species.



Zanobatus schoenleinii

RHINOBATIDAE Guitarfishes **page 164**

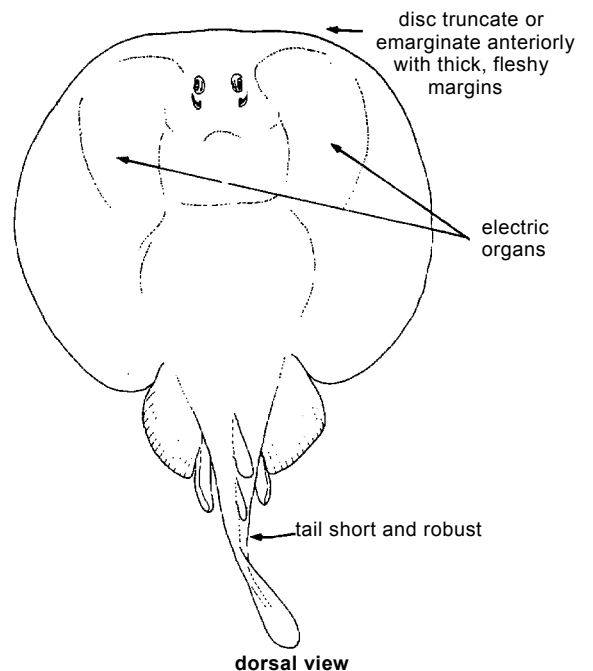
Total length to 200 cm; coastal marine waters to 90 m depth; demersal.



Rhinobatos

TORPEDINIDAE Electric rays

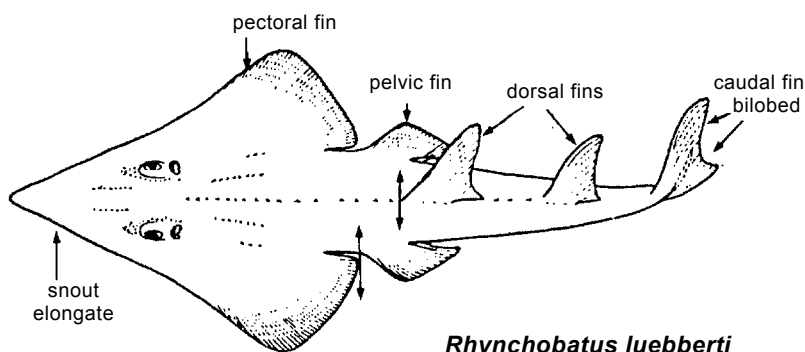
Total length to 180 cm; coastal waters to 570 m depth; usually demersal.



Torpedo

RHYNCHOBATIDAE Wedgefishes

Total length to 300 m; coastal marine waters to 35 m depth; demersal. A single species.



Rhynchobatus luebberti

BATOID FISHES

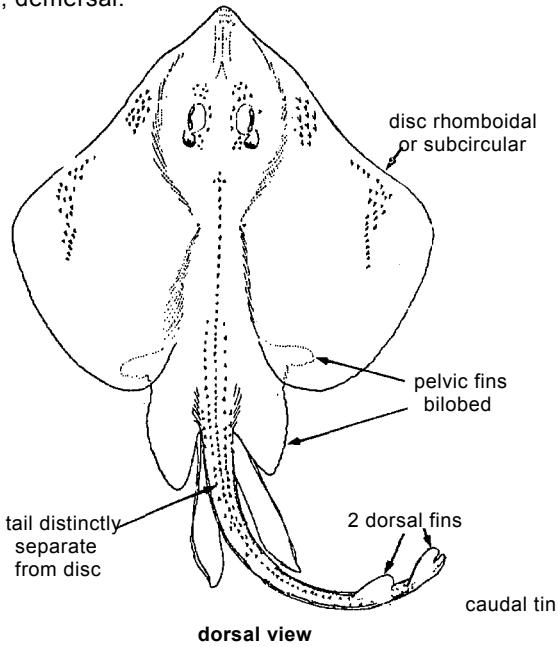
GUIDE TO FAMILIES

RAJIDAE

Rays and skates

page 161

Total length to 230 cm; littoral waters to beyond 1000 m depth; demersal.



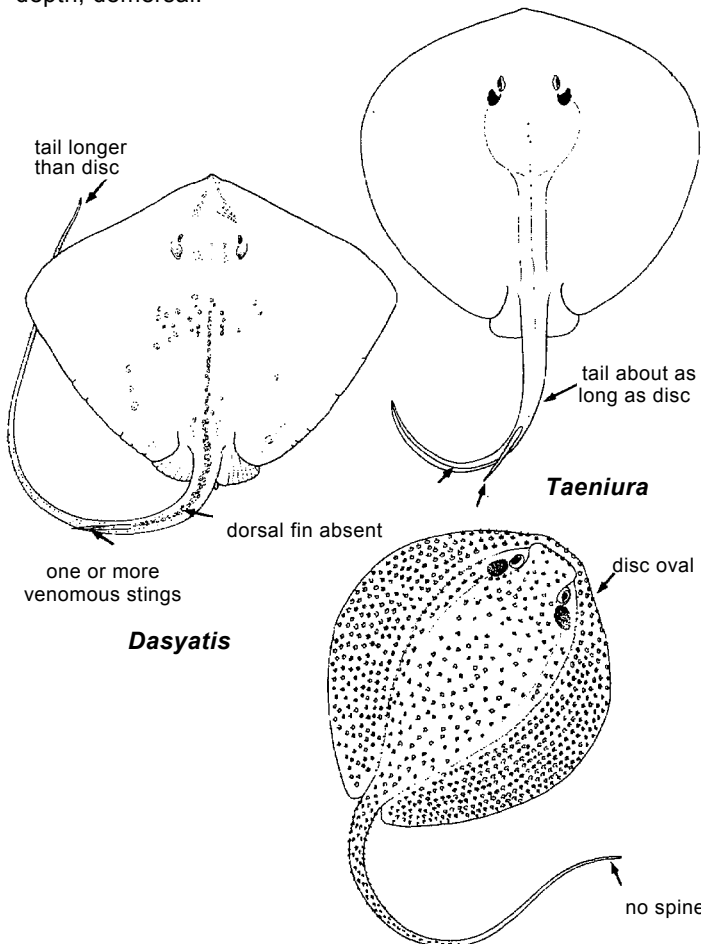
Raja

DASYATIDAE

Stingrays

page 157

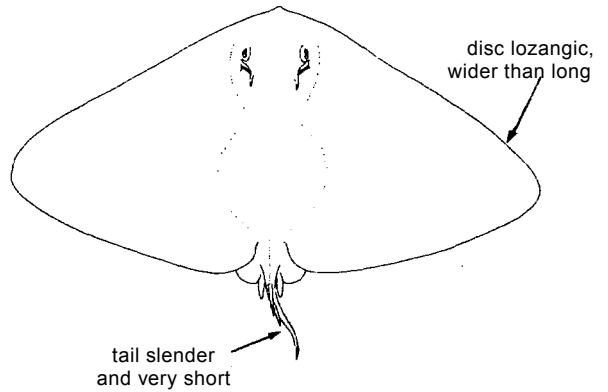
Total length to 300 cm; coastal waters to at least 300 m depth; demersal.



GYMNURIDAE

Butterfly rays

Disc width to 400 cm; from coastal waters to 60 m depth; demersal.



Gymnura

MYLIOBATIDAE

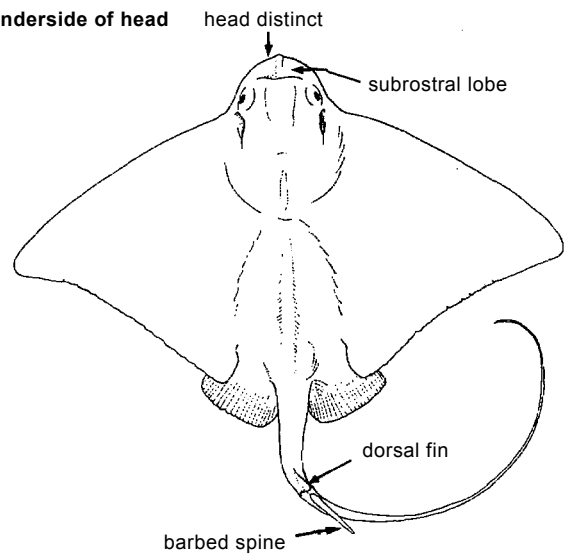
Eagle rays

page 159

Total length to 370 cm; coastal waters to 100 m depth; demersal.

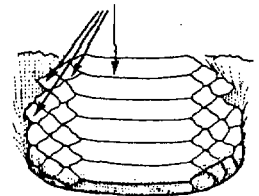
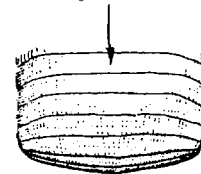


underside of head



a single series

usually 7 series



Aetobatus narinarius

Myliobatis aquila,
Pteromylaeus bovinus

arrangement of teeth in upper jaw

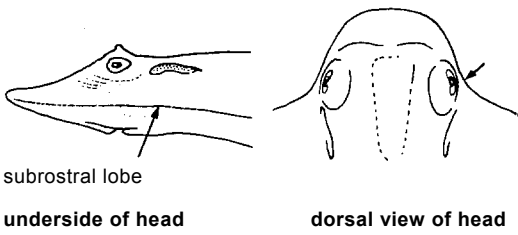
BATOID FISHES
GUIDE TO FAMILIES

MOBULIDAE

Mantas and Sea-devils

page 158

Width of disc to 700 cm; shallow coastal waters; pelagic.

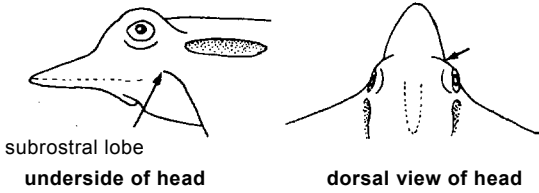


subrostral lobe

underside of head

dorsal view of head

Myliobatis aquila

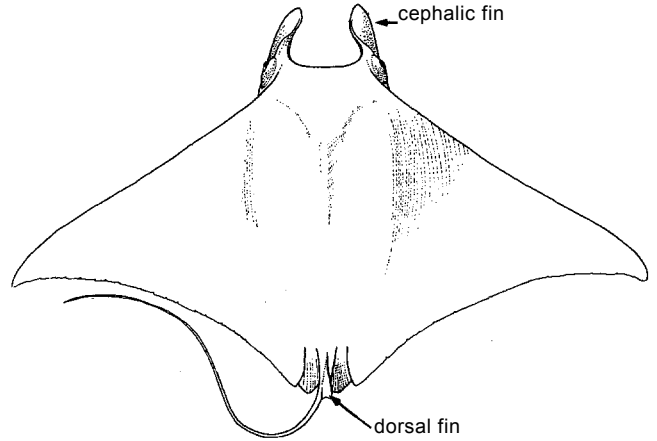


subrostral lobe

underside of head

dorsal view of head

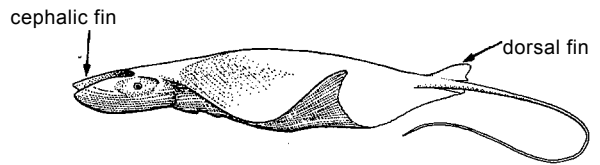
Pteromylaeus bovinus



cephalic fin

dorsal fin

dorsal view



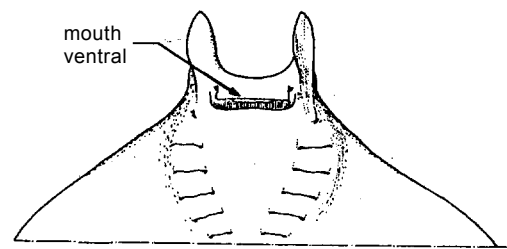
cephalic fin

dorsal fin

lateral view

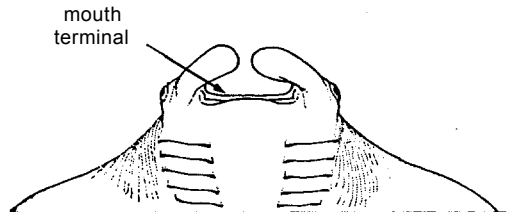


frontal view



mouth ventral

underside of head



mouth terminal

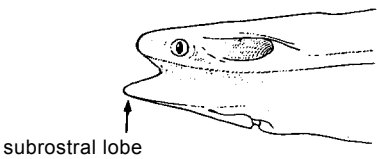
underside of head

RHINOPTERIDAE

Cownose rays

page 165

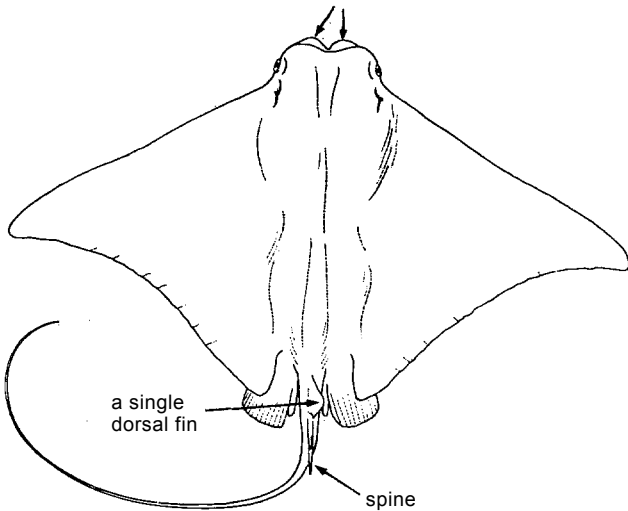
Length of disc to 200 m; coastal waters to about 30 m depth.



subrostral lobe

underside of head

subrostral lobes separated by a notch



a single dorsal fin

spine

Rhinoptera marginata

underside of head

Manta birostris