

CHIMAERAS

TECHNICAL TERMS AND PRINCIPAL MEASUREMENTS USED

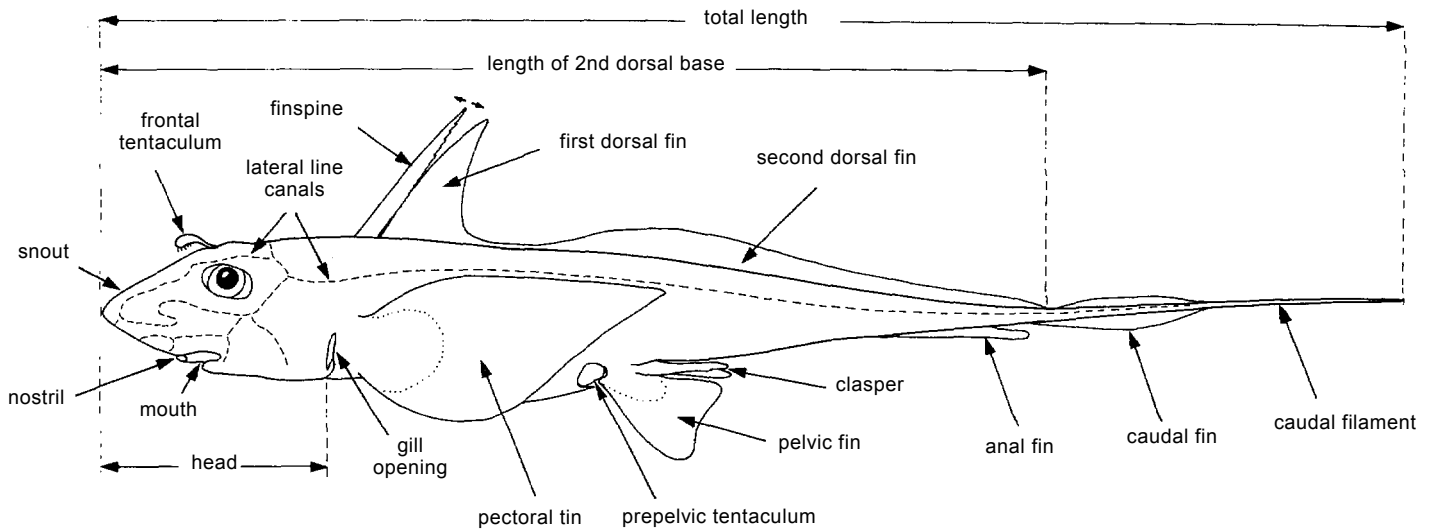


diagram of a male chimaera
(*Chimaera*)

CHIMAERAS - Chimaeriformes

Four pairs of gill openings hidden by a pair of soft gill covers, thus appearing as a single gill opening on each side of head; no spiracles.

CHIMAERIDAE

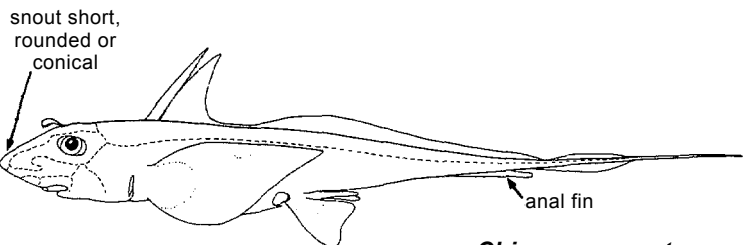
Shortnose chimaeras

To 150 cm from 90 to 1100 m depth, demersal.

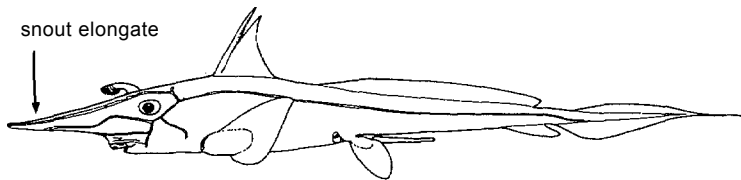
RHINOCHIMAERIDAE

Longnose chimaeras

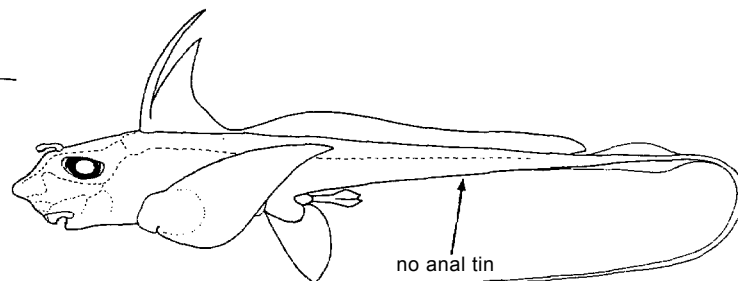
To 130 cm; from 200 to 470 m depth, demersal. A single species.



Chimaera monstrosa



Neoharriotta pinnata



Hydrolagus

