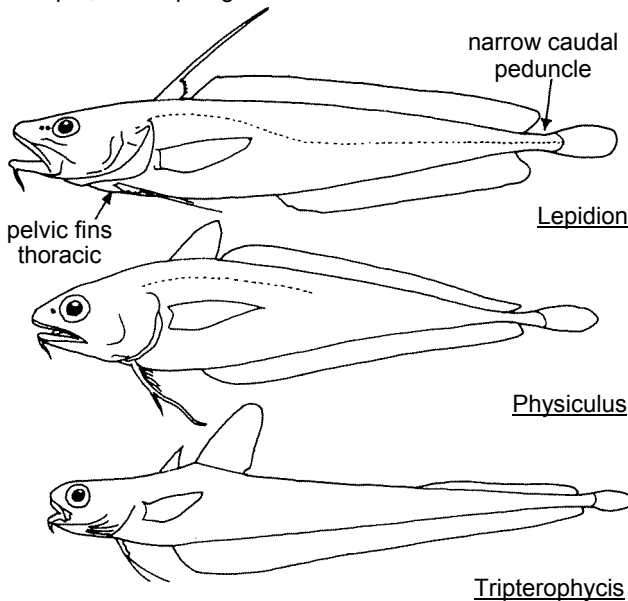


MORIDAE Moras **MOR**

To over 50 cm; marine, from about 200 to below 1 000 m depth; benthopelagic.

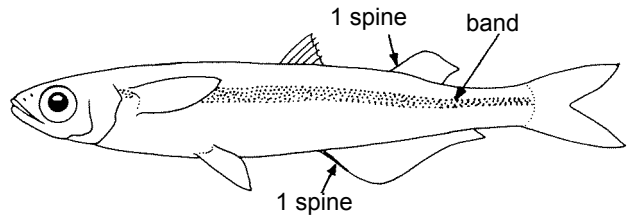


SILVERSIDES AND ALLIES - Atheriniformes

Small fishes; 2 well separated dorsal fins, the first spiny, but often inconspicuous; a silvery stripe on sides.

ATHERINIDAE Silversides **ATHER**

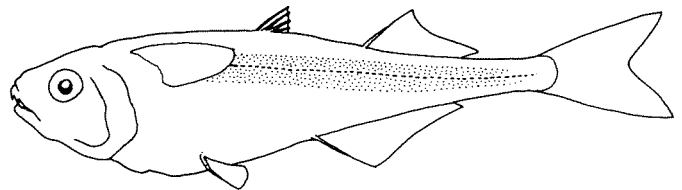
To about 15 cm, but usually smaller; in coastal marine waters, estuaries, coastal lagoons and freshwater.



NOTOCHEIRIDAE **NOTCH**

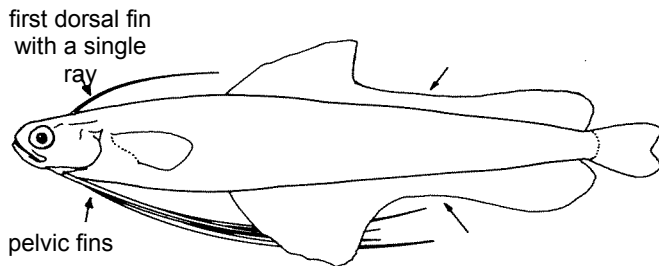
Flowers of the wave, surf sardines

To about 9 cm; marine, coastal surf waters; a single species: *Iso natalensis*.



BREGMACEROTIDAE Codlets, codlings **BREG**

To 10 cm, but usually smaller; marine in oceanic waters from the surface to below 2 000 m depth; pelagic.

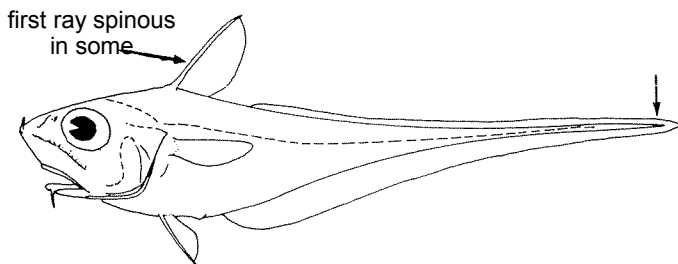


FLYINGFISHES AND ALLIES - Beloniformes

Either snout beak-like with upper and/or lower jaws greatly prolonged (except in 2 genera), or with enlarged, wing-like, pectoral, and sometimes also pelvic fins; lateral line near ventral profile of body; a single dorsal fin consisting of soft rays; pelvic fins abdominal.

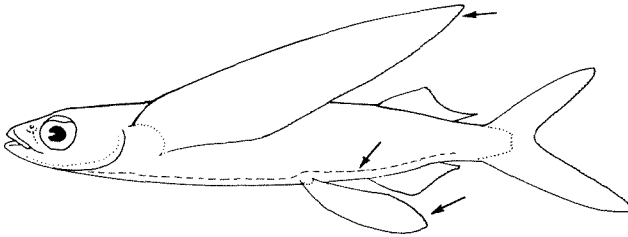
MACROURIDAE Grenadiers **MACROUR**

To about 60 cm; marine, from about 250 to below 2 000 m depth; benthopelagic.



EXOCEOETIDAE Flyingfishes **EXOC**

To 35 cm; marine; pelagic in surface waters.

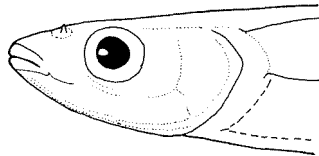


HEMIRAMPHIDAE Halfbeaks **HEMIR**

To about 45 cm; in marine, coastal and offshore waters, estuaries and freshwater, near the surface.

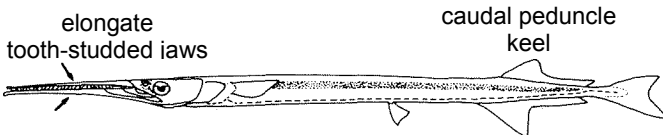


lower jaw greatly prolonged except in *Chriodorus* and *Oxyporhamphus*



BELONIDAE Needlefishes **BELON**

To about 130 cm; in marine coastal and offshore waters, estuaries, coastal lagoons and freshwater; pelagic, close to the surface.

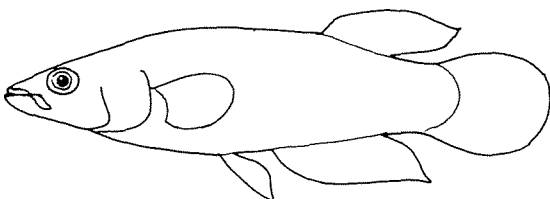


KILLIFISHES AND ALLIES - Cyprinodontiformes

Generally small fishes with upward-directed mouths, single dorsal and anal fins, and rounded to emarginate caudal fins; lateral line reduced to a series of separate pit organs along sides of body.

CYPRINODONTIDAE Killifishes

To 10 cm, but usually smaller; in freshwater, estuaries and coastal lagoons, just off the bottom or near the surface; oviparous.

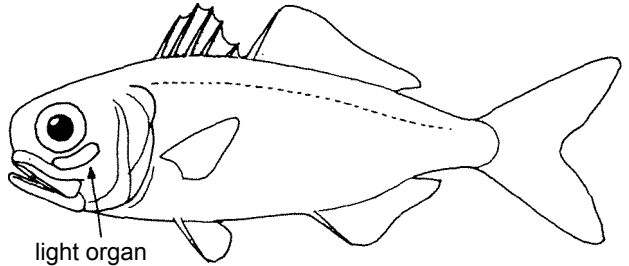


SQUIRRELFISHES AND ALLIES - Beryciformes

Head spines and/or crests well developed; fin-spines well developed except in *Diretmidae*; scales heavy and strongly ctenoid (rough).

ANOMALOPIDAE Lanterneye fishes

To 30 cm; marine, near surface; also rocks, reefs.

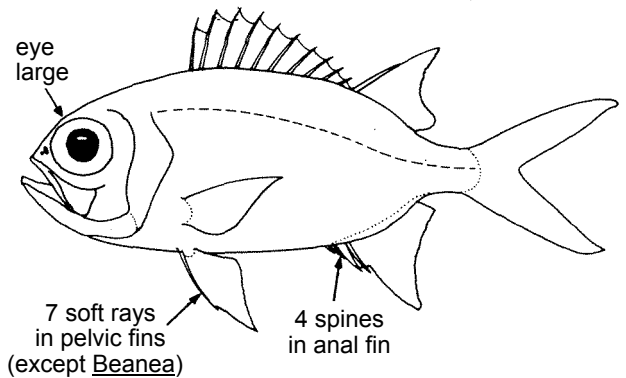


HOLOCENTRIDAE **HOLOC**

Squirrelfishes, soldierfishes and redcoats

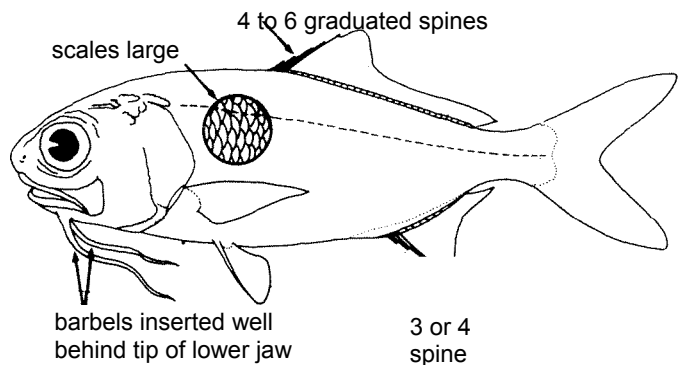
To at least 45 cm; marine, from shallow coastal waters to below 200 m depth; benthic.

spiny portion of dorsal fin much longer than soft portion



POLYMIXIIDAE Beardfishes **POLYM**

To about 35 cm; marine, from about 100 to 650 m depth; benthic; a single species in the area.

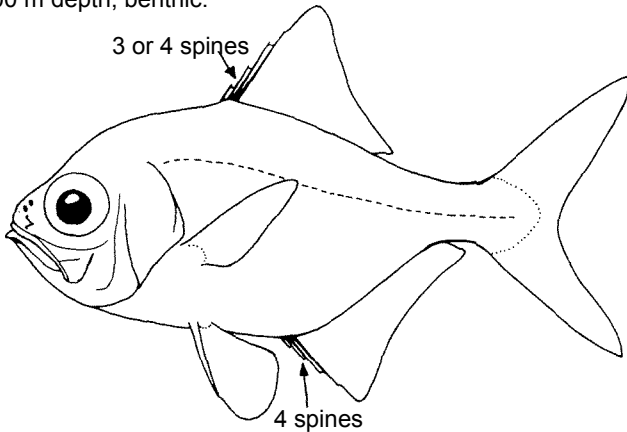


BERYCIDAE

Alfonsinos

BER

To about 70 cm; marine, from about 200 to below 600 m depth; benthic.

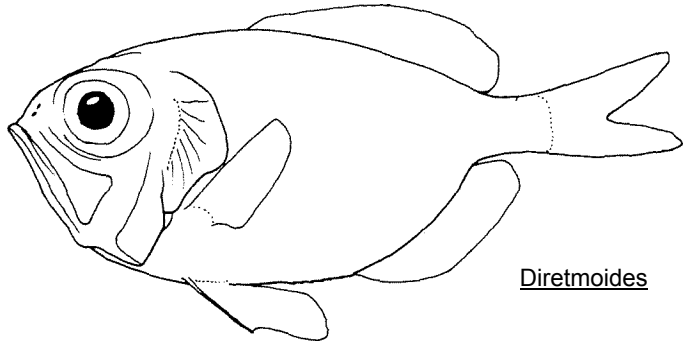


DIRETMIDAE

Diretmids

DIRET

To about 40 cm, but usually smaller; marine, from about 400 to below 1 000 m depth; benthic.



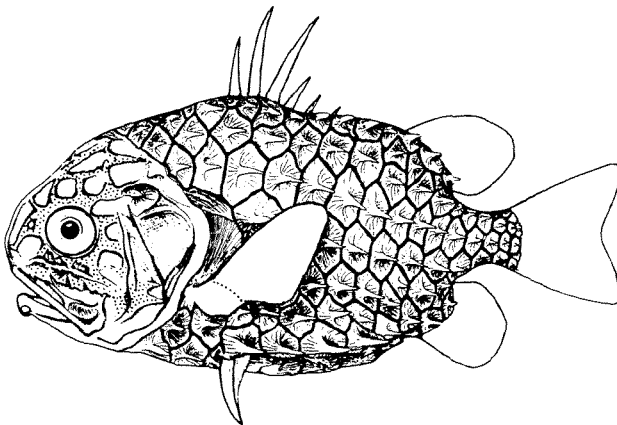
Diretmoides

MONOCENTRIDAE

Pinecone fishes

MONOC

To 17 cm; marine between 20 and 200 m depth; benthic; a single species in the area, Monocentris japonicus.



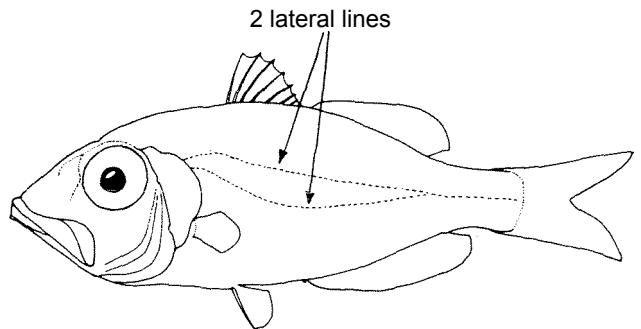
DORIES AND ALLIES - Zeiformes

Body usually compressed and deep; jaws greatly distensible; prominent spines in anterior part of dorsal fin.

PARAZENIDAE

Parazens

To 14 cm; marine, from about 150 to beyond 500 m depth; benthic; a single species: Parazen pacificus.

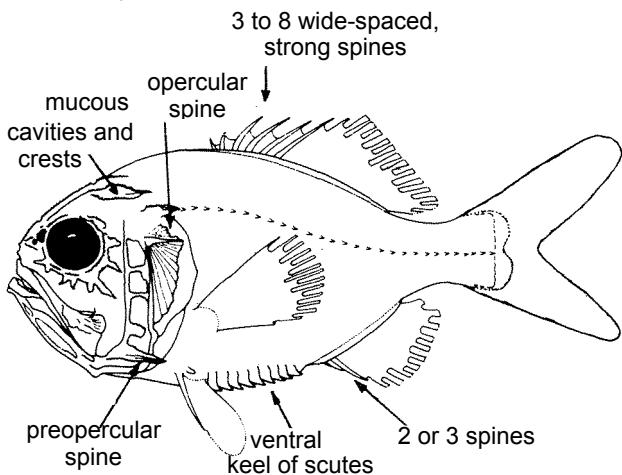


TRACHICHTHYIDAE

Slimeheads

TRACHIC

To about 60 cm; marine, from about 100 to 1 000 m depth, rarely below 600 m; benthic.



2 lateral lines

ZEIDAE

Dories

ZEID

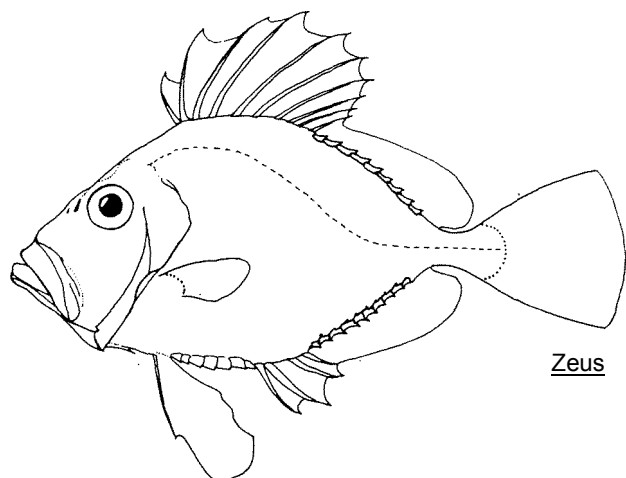
To about 65 cm; marine, in coastal waters between 100 and 300 m depth; benthic to benthopelagic.

CAPROIDAE

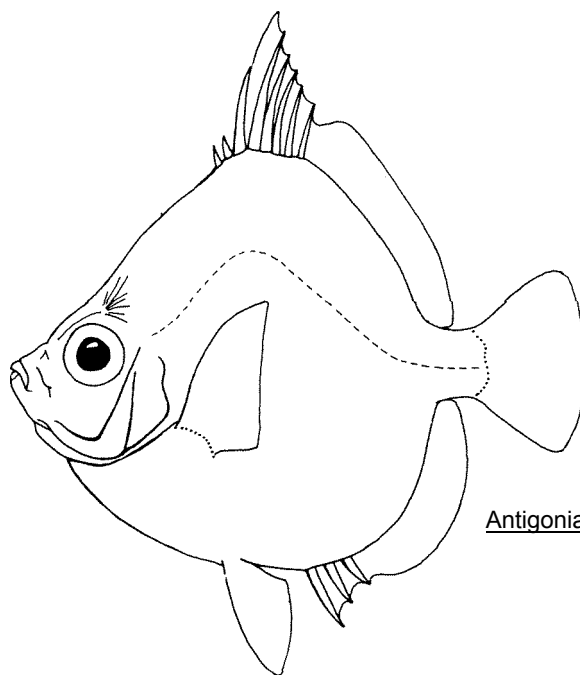
Boarfishes

CAPRO

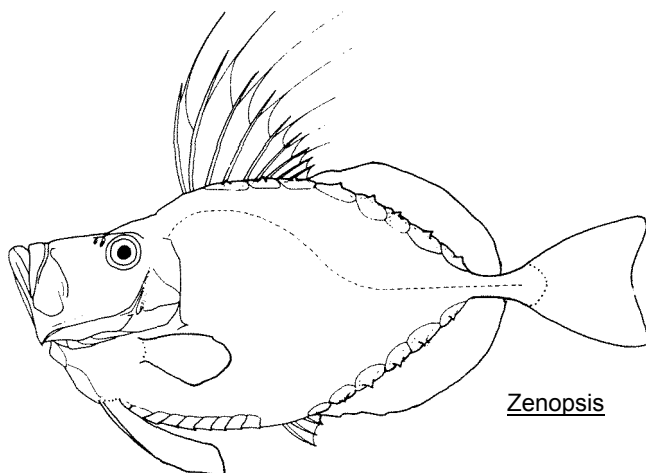
To about 22 cm; marine, from 65 to about 60,0 m depth; benthic to benthopelagic; a single species in the area; Antigonia rubescens.



Zeus



Antigonia



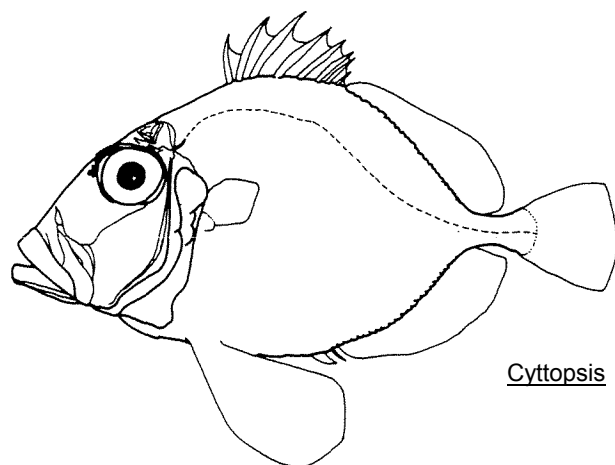
Zenopsis

OREOSOMATIDAE

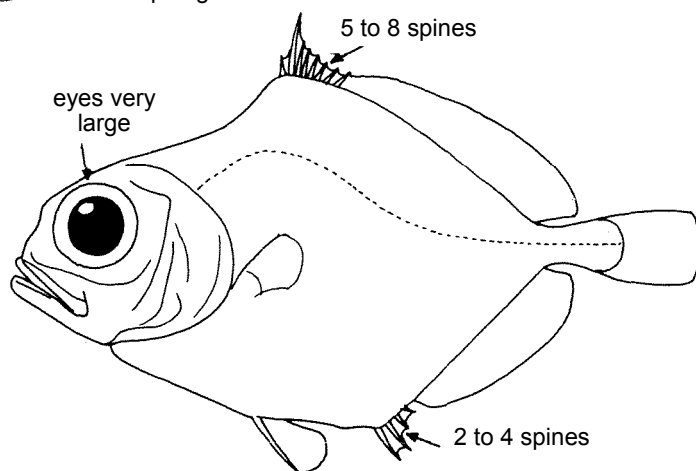
Oreo dories

OREOS

To 50 cm; marine, adults from 500 to over 1 200 m depth, juveniles nearer to the surface; benthopelagic to mesopelagic.



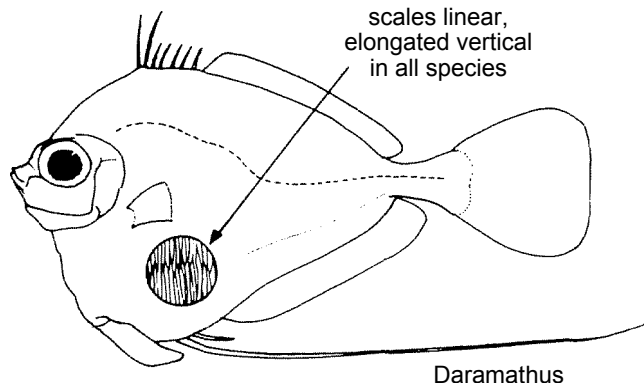
Cyttopsis



GRAMMICOLEPIDAE

GRAMMICOL

Grammicolepids
To about 35 cm; marine, from about 150 to below 500 m depth; benthopelagic.



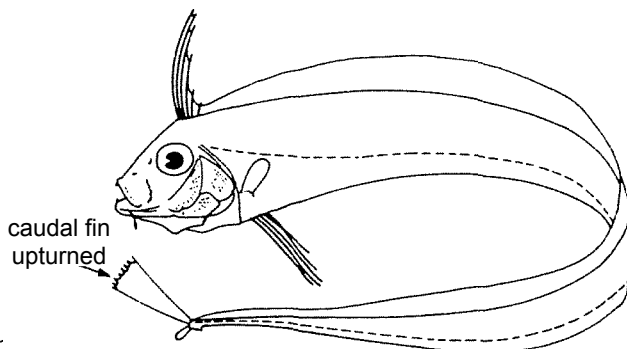
Daramathus

TRACHIPTERIDAE

Ribbonfishes

TRACHIP

To about 200 cm; marine, from about 180 to nearly 1 000 m depth; mesopelagic.



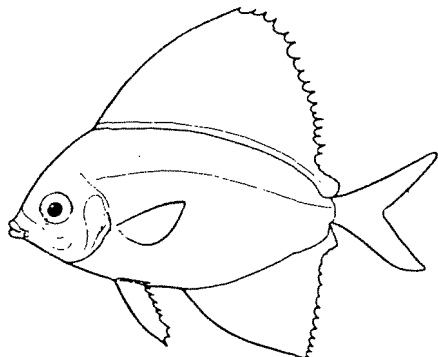
OPAHS AND ALLIES - Lemnridiformes

Body shape highly variable with the families; no spines in fins; jaws protrusible.

VELIFERIDAE

Veliferids

To 30 cm; marine, in rather deep waters.

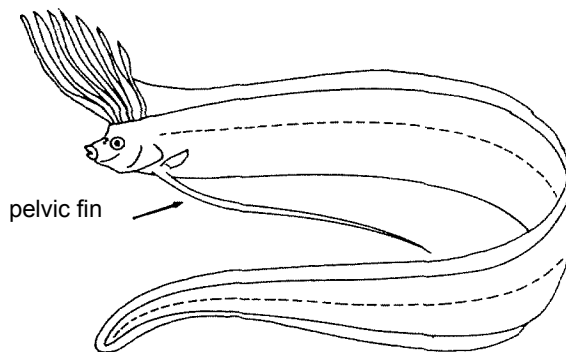


REGALECIDAE

Oarfishes

REGAL

To about 700 cm, but average size about 300 cm; marine, adults from the surface to 1 000 m depth, juveniles nearer to the surface; epi- and mesopelagic.

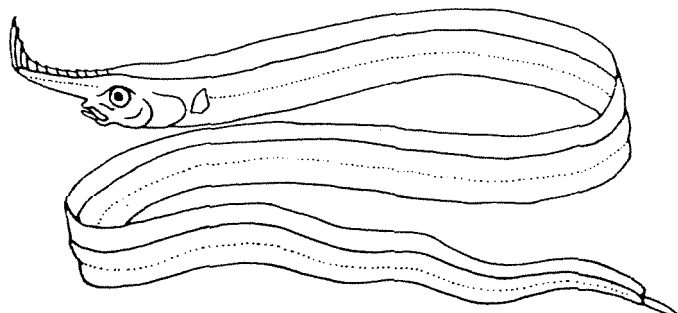


LOPHOTIDAE

LOPHOT

Crestfishes and unicornfishes

To at least 200 cm; marine, to 1 000 m depth; pelagic.

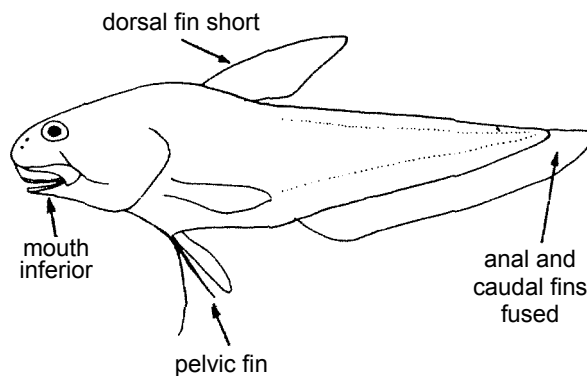


ATELEPODIDAE

Ateleopids

ATEL

To 180 cm; marine, from about 200 to 600 m depth; benthopelagic.



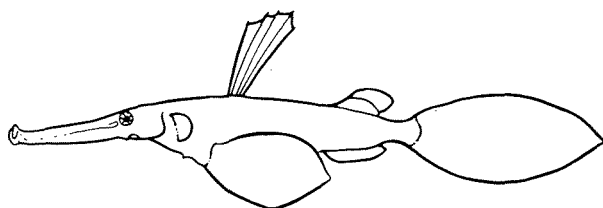
PIPEFISHES AND ALLIES - Syngnathiformes

Body elongate, snout tube-like; scales sometimes modified to form series of bony plates.

SOLENOTOMIDAE

Ghost pipefishes

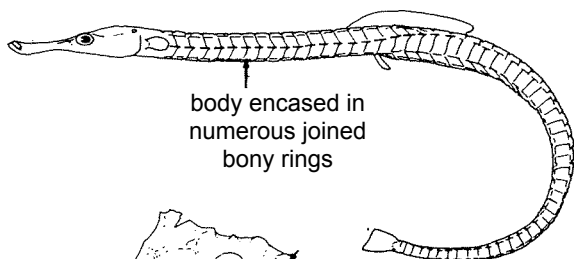
To 17 cm; marine in shallow waters, associated with seaweeds.



SYNGNATHIDAE

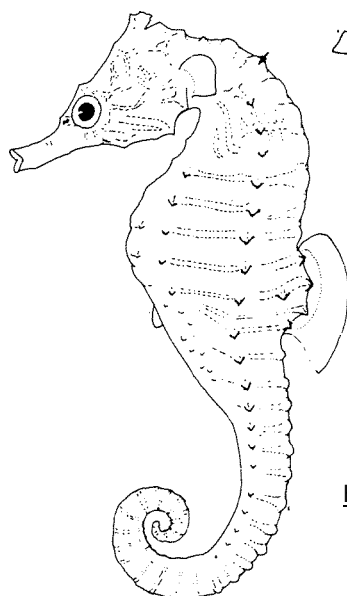
Pipefishes

To about 30 cm; in freshwater, estuaries, coastal lagoons, littoral pools and coastal marine waters to about 90 m depth; mostly benthic (at least one species pelagic).



body encased in numerous joined bony rings

Syngnathus



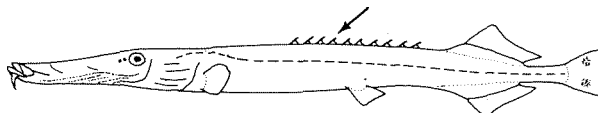
Hippocampus

AULOSTOMIDAE

Trumpetfishes

AULOST

To 75 cm; marine, in shallow and clear coastal waters; often drifting head down. A single species in the area: A. chinensis.

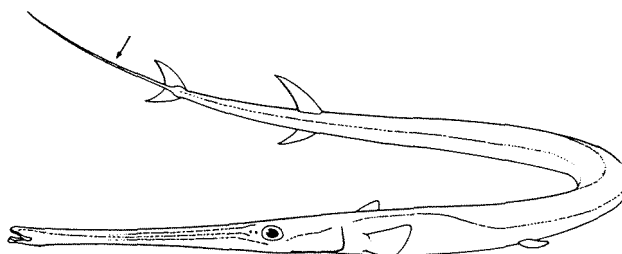


FISTULARIIDAE

FIST

Cornetfishes, flutemouths

To 200 cm; marine, in shallow coastal waters

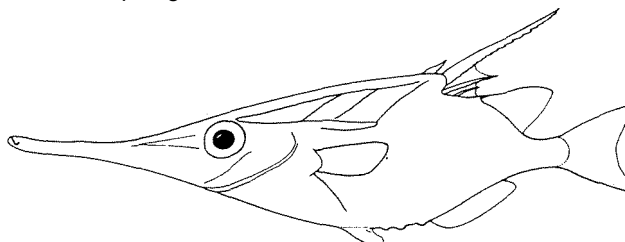


MACRORHAMPHOSIDAE

Snipefishes

MACROR

To about 25 cm; marine, from 25 to 600 m depth; benthopelagic.



CENTRISCIDAE

Shrimpfishes

To about 15 cm; marine, coastal waters near reefs, swimming in vertical position, snout downward.

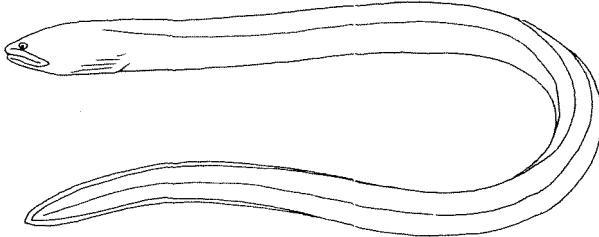


SWAMP EELS AND ALLIES - Synbranchiformes

SYNBANRACHIDAE

Swamp eels

To 32 cm; littoral marine and estuarine, on mud banks.



SCORPIONFISHES AND ALLIES - Scorpaeniformes

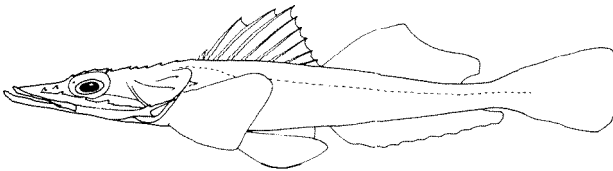
Cheeks with a bony strut (posterior extension of suborbital bone to preopercle); usually well developed spines on head and prominent spines in dorsal fin; pectoral fins usually rounded; membranes between lower rays often incised; caudal fin rarely forked.

PLATYCEPHALIDAE

Spiny flatheads

PLATYC

To 100 cm; marine, from 20 to about 200 m depth.

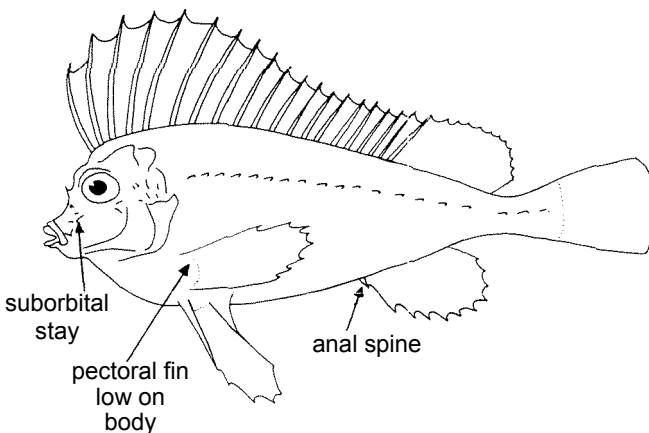


CONGIOPODIDAE

Horsefishes

CONGIO

To about 80 cm; marine, from the coastline to about 150 m depth; benthic.

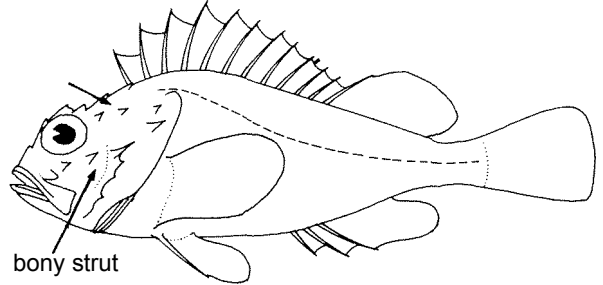


SCORPAENIDAE

SCORP

Scorpionfishes, rockfishes, rosefishes, stingfishes, stonefishes, turkeyfishes and waspfishes

To over 40 cm; marine, from the coastline to below 600 m depth; benthic; often with venomous spines.

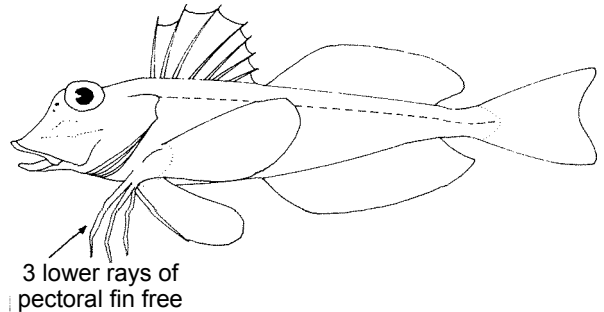


TRIGLIDAE

Searobins, gurnards

TRILL

To about 45 cm; marine, from the coastline to about 200 m depth; benthic.

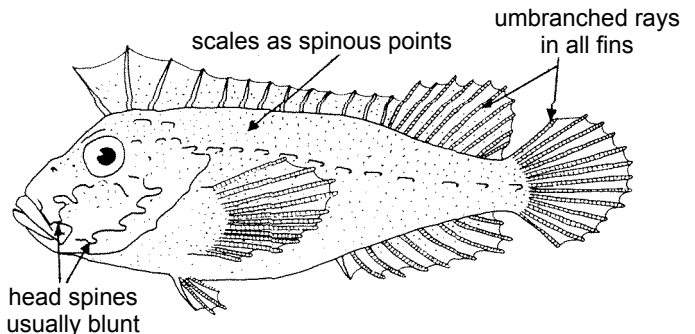


APLOACTINIDAE

Velvetfishes

APLO

To 7 cm; marine, coastal waters to about 100 m depth; benthic.



FLYING GURNARDS - Dactylopteriformes

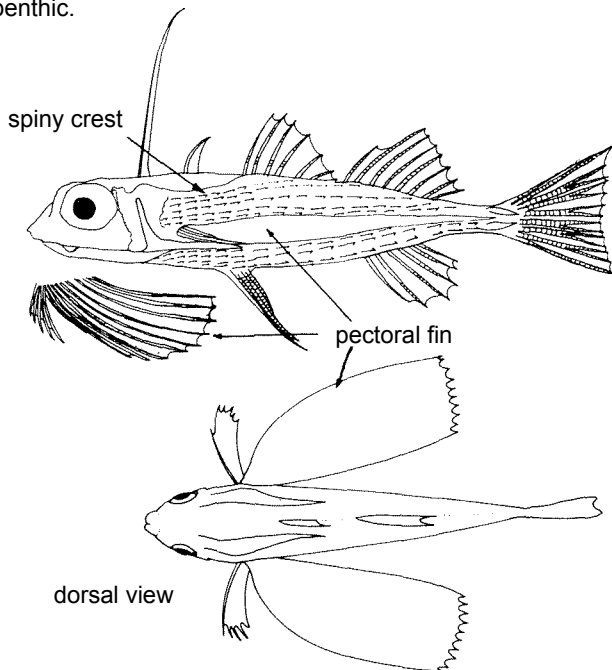
Greatly enlarged pectoral fins; head encased in a bony shield with a spiny crest from nape to below base of first dorsal fin.

DACTYLOPTERIDAE

Flying gurnards

DACTYL

To at least 45 cm; marine, in shallow coastal waters; benthic.



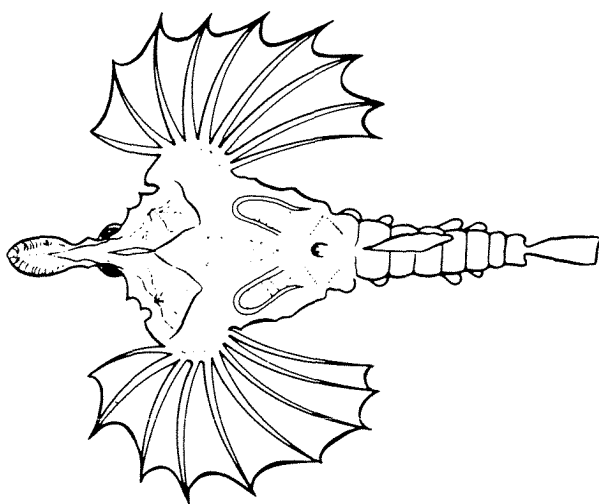
SEAMOTHS - Pegasiformes

Body encased in bony rings; a long flattened rostrum; dorsal fins small, without spine; pectoral fins very long.

PEGASIDAE

Seamoths

To 13 cm; marine, in shallow coastal waters to about 50 m depth.



PERCH-LIKE FISHES - Perciformes: Percoidei

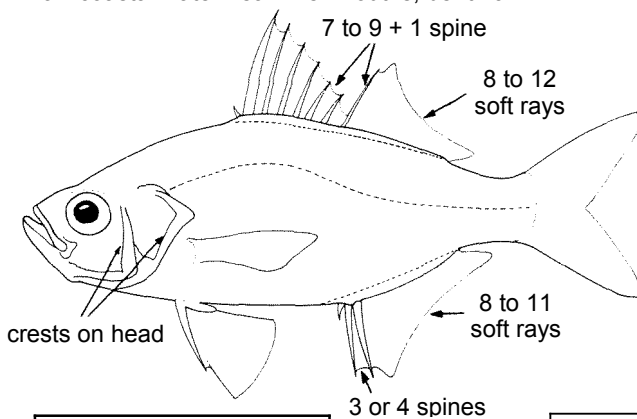
Shape extremely variable; either 2 dorsal fins, or 1 dorsal fin with the anterior elements being sharp spines; pelvic fins with 1 spine and 5 soft rays, placed well forward on ventral surface of body; maxillary bone not included in gape of mouth but dorsal to the tooth-bearing premaxilla.

AMSASSIDAE

Perchlets

AMBAS

To about 20 cm; marine to freshwaters, mostly shallow coastal water near river mouths; benthic.

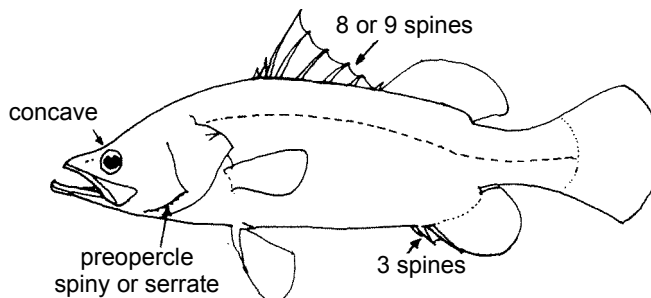


CENTROPOMIDAE

Snooks, seaperches

CENTRP

To 165 cm; coastal marine and brackish waters, coastal entering estuaries; benthic.

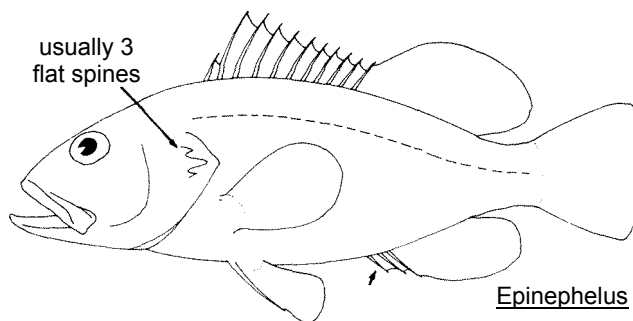


SERRANIDAE

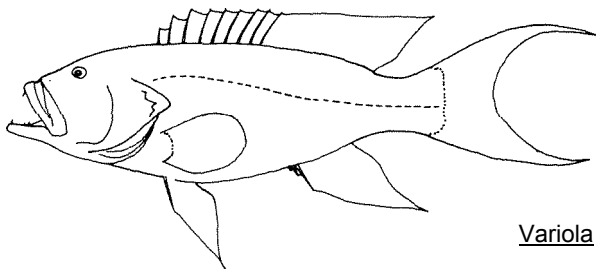
SERRAN

Groupers, hinds, hamlets, seabasses, combers, creolefishes and rockcods

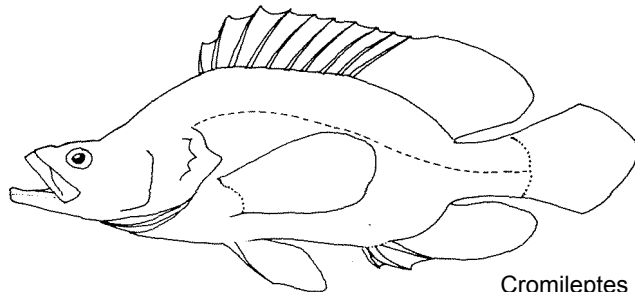
To over 200 cm; marine, from the coastline to depths below 200 m; also in the lower reaches of estuaries; mostly benthic.



Epinephelus



Variola

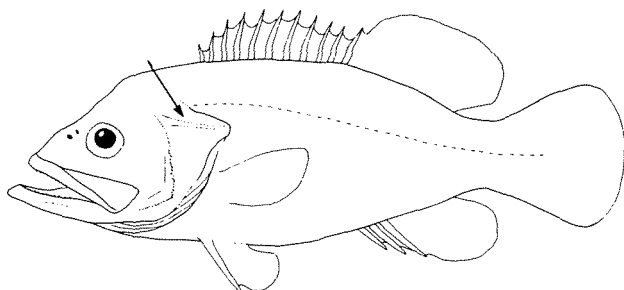


Cromileptes

POLYPRIONIDAE

Wreckfishes

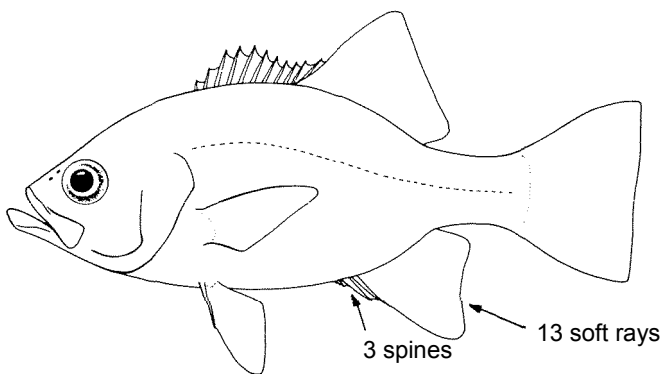
To 200 m; marine, on rocky and sandy bottoms, between 40 and 450 m depth.



DINOPERCIDAE

Lampfishes

To 75 cm; marine, on rocky reefs from a few metres to beyond 50 m depth.



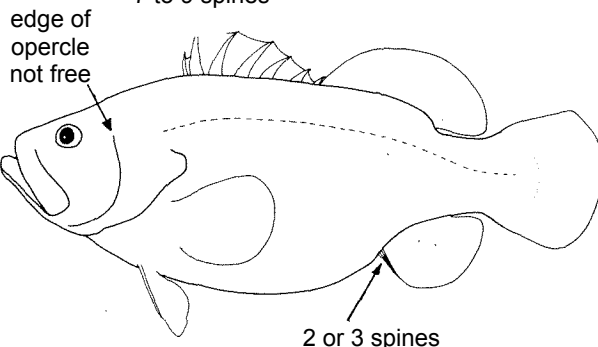
GRAMMISTIDAE

Soapfishes

GRAMMIST

To about 33 cm; marine, from shallow coastal waters to about 50 m depth; benthic.

7 to 9 spines

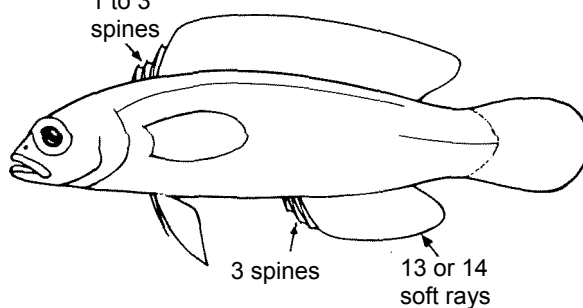


PSEUDOCROMIDAE

Dottybacks

To about 9 cm; marine, in shallow coastal waters to 60 m depth; benthic.

1 to 3 spines

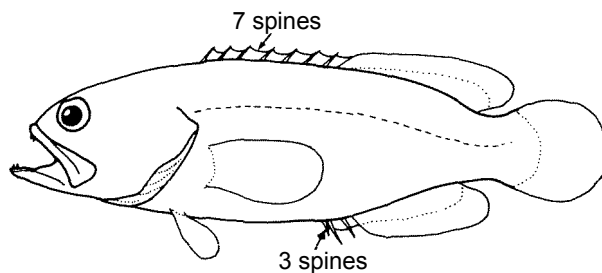


PSEUDOGRAMMIDAE

Pseudogrammids

To about 15 cm; marine, in shallow coastal waters; benthic.

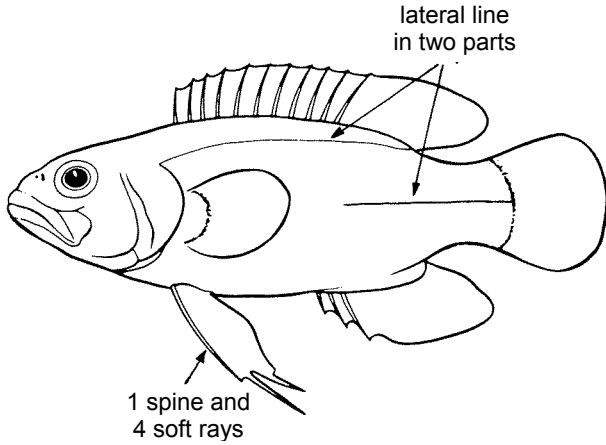
7 spines



PLESIOPIDAE

Roundheads

To 25 cm; marine, in shallow waters near reefs and rocky areas; benthic.

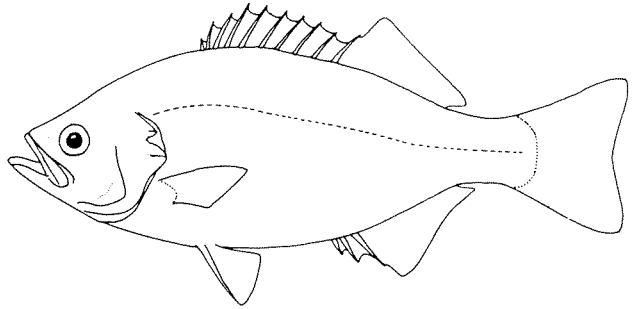


KUHLIIDAE

Daras, flagtails

KUH

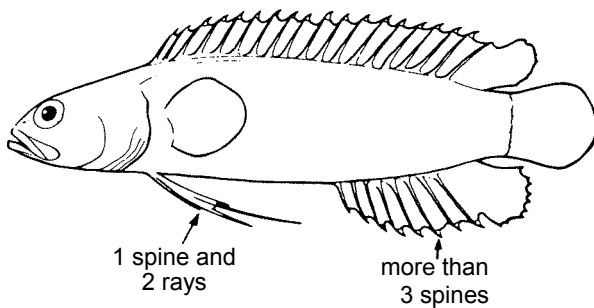
To 40 cm; marine, in coastal waters and estuaries to about 20 m depth; some species apparently confined to freshwater.



ACANTHOCLINIDAE

Scotties

To 7 cm; marine, in shallow coastal waters.

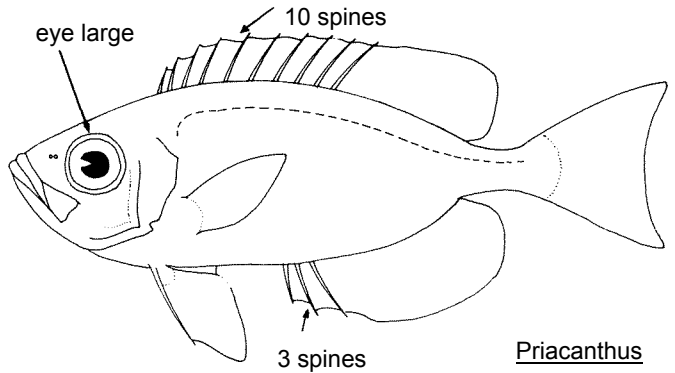


PRIACANTHIDAE

Bigeyes, glasseyes

PRIAC

To 40 cm; marine, from the coastline to about 200 m depth; benthic.



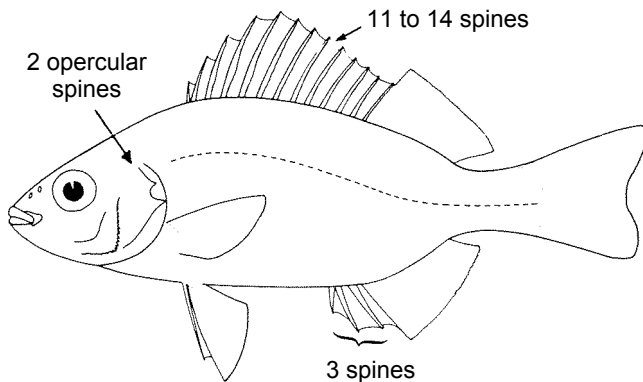
Priacanthus

TERAPONIDAE

TER

Terapon-perches, terapons

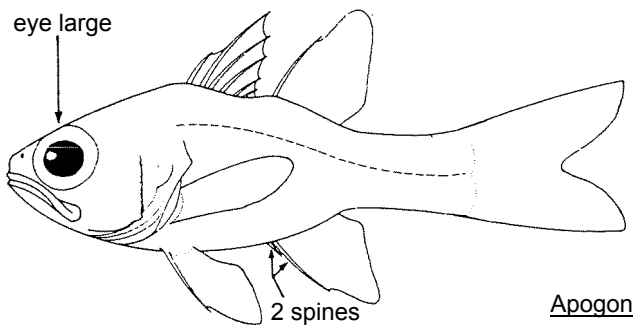
To 30 cm; inshore marine and brackish waters, some species entering freshwaters; benthic.



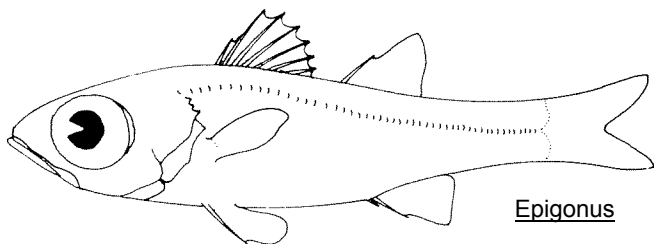
APOGONIDAE

Cardinalfishes

To about 20 cm, but most species smaller than 12 cm; marine, from the coastline to about 1 000 m depth; also in brackish waters and freshwater; mostly benthic.



Apogon



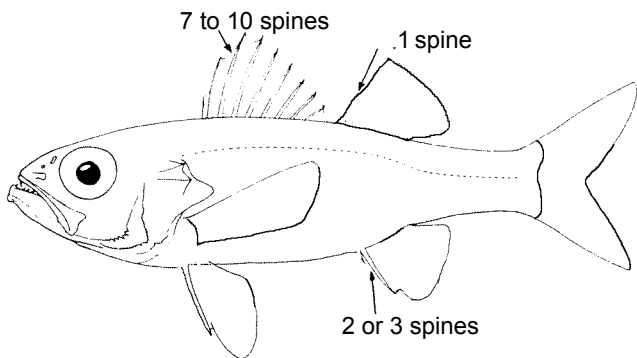
Epigonus

ACROPOMATIDAE

ACRO

Glow-bellies, splitfins

To 30 cm; marine, to 600 m depth; pelagic.

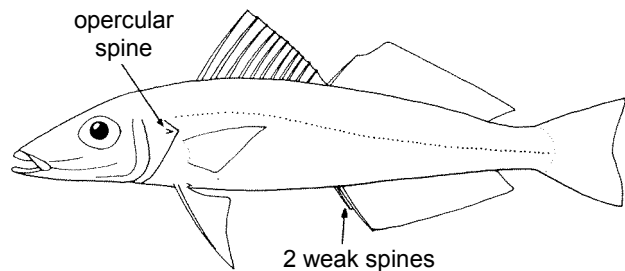


SILLAGINIDAE

Sillagos

SILL

To about 50 cm; shallow marine coastal waters and estuaries; benthic.

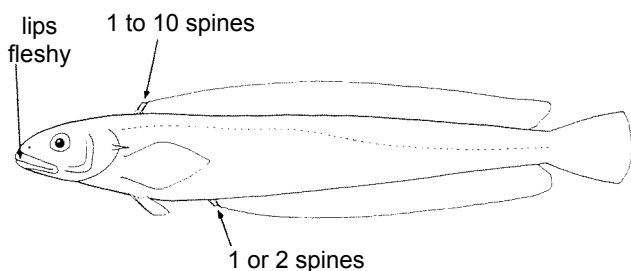


MALACANTHIDAE

Sand tilefishes

MALAC

To about 40 cm; marine, from shallow coastal waters to about 150 m depth; benthic.

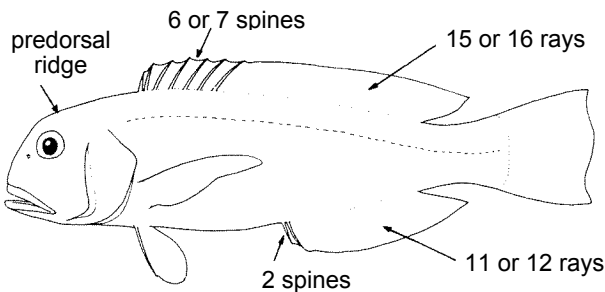


BRANCHIOSTEGIDAE

Tilefishes

BRAN

To 70 cm; marine, from about 20 to 200 m depth; benthic. A single species in the area.

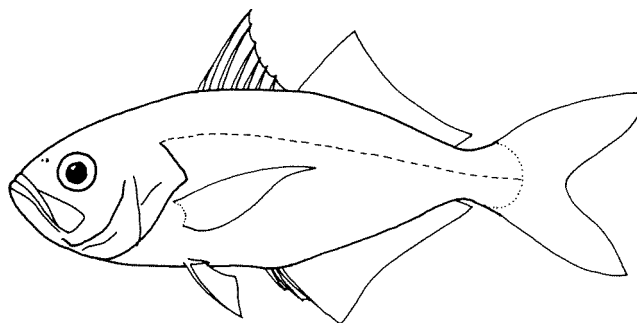


LACTARIIDAE

LACT

False trevallies, milk trevallies

To 40 cm; coastal waters to 100 m depth; benthic; a single species in the area: Lactarius lactarius



POMATOMIDAE

Bluefishes

POMAT

To 110 cm; marine, surface waters; pelagic. A single species in the area: Pomatomus salatrix.

