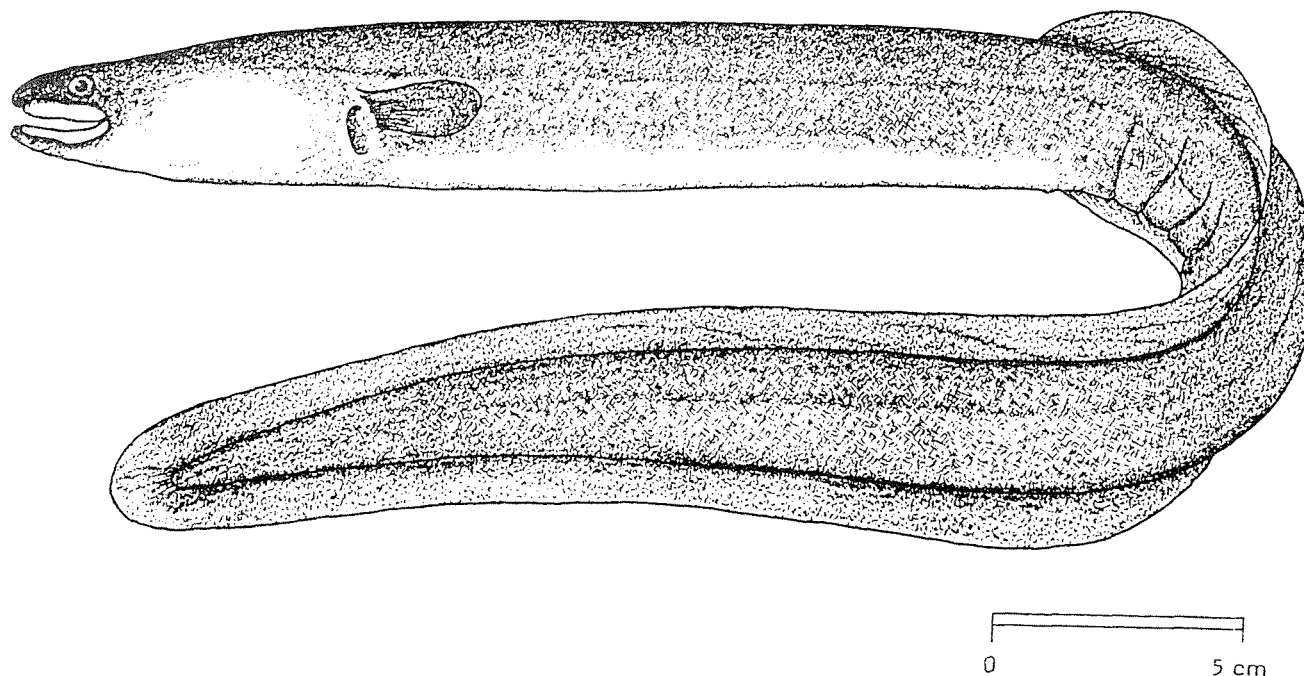


## FAO SPECIES IDENTIFICATION SHEETS

FAMILY: ANGUILLIDAE

FISHING AREA 51  
(W. Indian Ocean)*Anguilla bicolor bicolor* McClelland, 1844OTHER SCIENTIFIC NAMES STILL IN USE : *Anguilla bicolor* McClelland, 1844

## VERNACULAR NAMES:

FAO :           En - Shortfin eel  
                   Fr - Anguille à nageoire courte  
                   Sp - Anguila de aleta corta

NATIONAL:

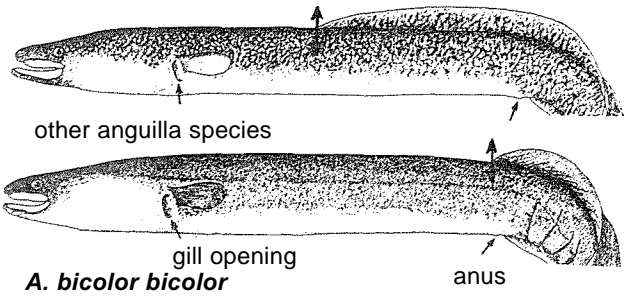
## DISTINCTIVE CHARACTERS:

Body elongate, cylindrical anteriorly, somewhat compressed along tail. Head conical, flattened dorsally; anterior nostril a narrow tube on face of snout; upper and lower lips prominent; lower jaw longer than upper, projecting; angle of mouth a little behind rear margin of eye; eye relatively small; teeth small, inconspicuous, multiserial, forming broad continuous bands on jaws and vomer (roof of mouth), the vomerine band extending more or less as far back as the the bands of the upper jaw but more pointed posteriorly; the upper teeth especially form an extensive toothed area on roof of mouth. Dorsal origin above anus or very nearly so; pectoral fins present. Minute, elongate-oval scales present all over body, embedded in skin. Vertebrae 106 to 115.

Colour: olive to dark bluish-brown above, lighter below, from tip of lower jaw to anus; usually this area is yellowish to cream in young; in migratory phase the colour changes to bronze-silver, especially below, and the pectoral fins darken. (Changes in size of eye, mouth and snout also occur as maturity approaches.)

**DISTINGUISHING CHARACTERS SIMILAR SPECIES OCCURRING IN THE AREA:**

Other *Anguilla* species: dorsal fin begins further forward about midway between pectoral fin bases and anus. Furthermore: (1) number of vertebrae lower in *A. marmorata* (100 to 110) and *A. mossambica* (100 to 106, against 106 to 115 in *A. bicolor bicolor*); (2) variegated yellow-olive over brown body markings (adults and large juveniles) and a tooth free area between inner row and outer rows of teeth on jaws in *A. marmorata*, *A. bengalensis bengalensis* and *A. bengalensis labiata* and tooth bands on jaws and vomer less broad.



**SIZE**

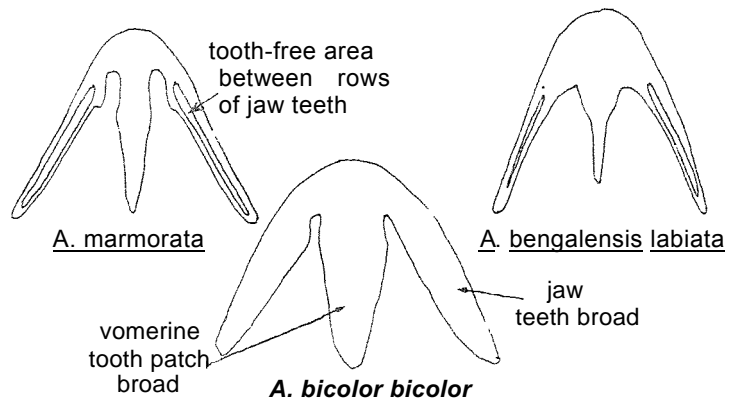
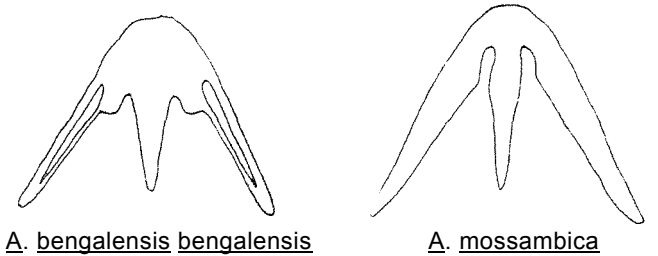
Maximum: 80 cm; common to about 65 cm.

**GEOGRAPHICAL DISTRIBUTION AND BEHAVIOUR:**

East Africa from Mozambique to Tanzania, Madagascar, Réunion, Mauritius, Seychelles, Pakistan, west coast of India and Sri Lanka. Also east coast of India eastward to Indo-Malaya and Indonesia.

Inhabits lowland freshwaters within its area of distribution, although it also occurs in estuaries and in the sea during its very early life and near maturity.

Forages actively at night, feeding mainly on a wide range of bottom invertebrates.



**PRESENT FISHING GROUNDS:**

No definite fishing grounds; caught rather infrequently, especially in freshwaters throughout its range,

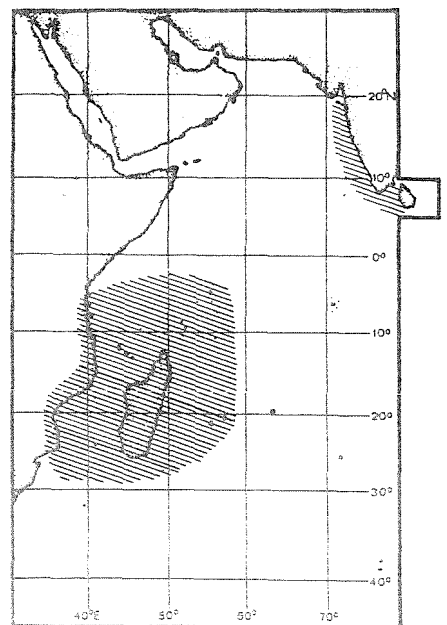
**CATCHES, FISHING GEAR AND FORMS OF UTILIZATION:**

Separate statistics are not reported for this species.

Caught mainly by various types of nets, traps and by hook and line.

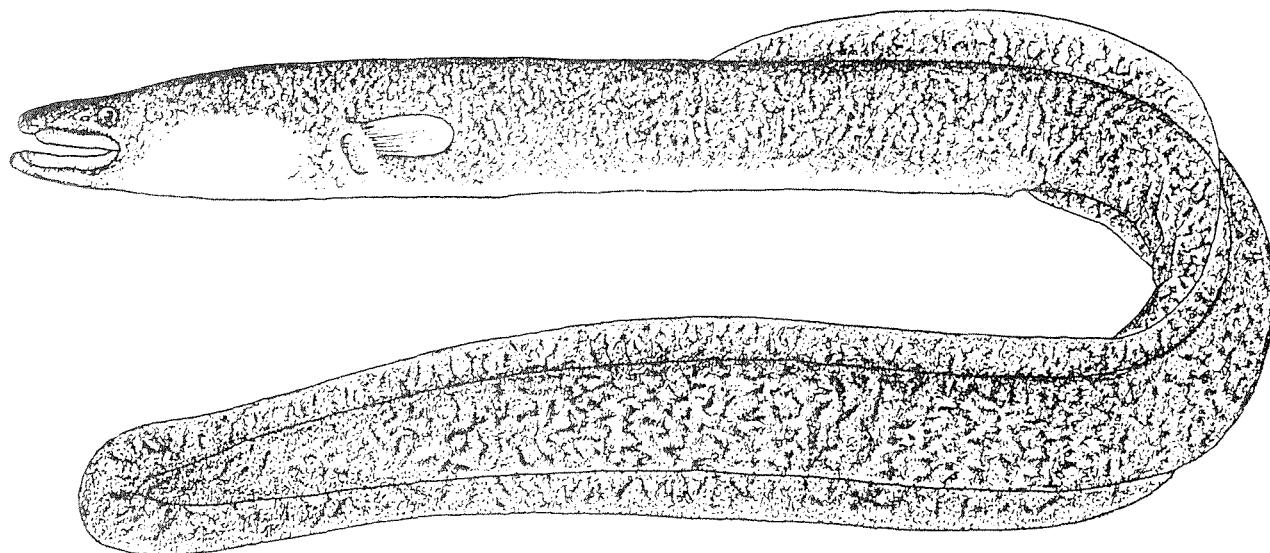
Marketed mainly fresh.

teeth on upper jaws and roof of mouth



## FAO SPECIES IDENTIFICATION SHEET

FAMILY: ANGUILLIDAE

FISHING AREA 51  
(W. Indian Ocean)*Anguilla marmorata* Quoy & Gaymard, 1824OTHER SCIENTIFIC NAMES STILL IN USE *Anguilla mauritiana* Bennett, 1831

## VERNACULAR NAMES:

FAO: En - Giant mottled eel  
Fr - Grande anguille marbrée  
Sp - Anguila moteada gigante

NATIONAL :

## DISTINCTIVE CHARACTERS:

Body elongate, cylindrical anteriorly, somewhat compressed along tail. Head conical, flattened dorsally; anterior nostril a narrow tube on face of snout; upper and lower lips prominent; lower jaw longer than upper, projecting; angle of mouth a little behind rear margin of eye; eye relatively small. Teeth small, inconspicuous, multiserial, forming a narrowish band on each jaw and a broader, but shorter band on vomer (roof of mouth); teeth on the upper jaw in more or less 3 longitudinal rows, those in the middle row largest, and the 2 outer rows separated from the inner by a tooth-free groove continuing back to the end of the band; the vomerine toothband narrows conspicuously at its mid-length. Dorsal fin origin nearer gill opening than anus; pectoral fins present. Minute, elongate-oval scales present all over body, embedded in skin. Vertebrae 100 to 110.

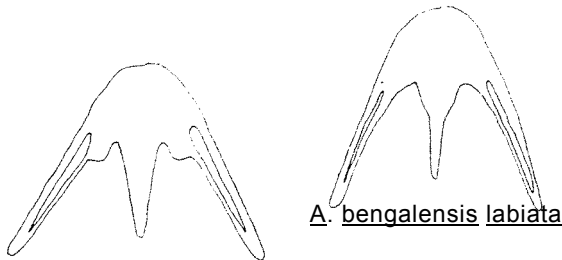
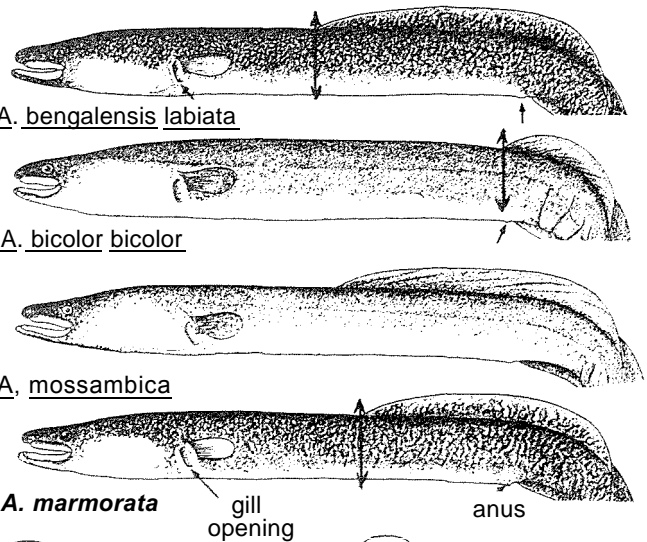
Colour: typically yellowish to olive or brown, mottled with dark brown, lighter on the head and below; juveniles tend to be plainer and lack the mottling or marbling. (Changes in colour and in sizes of eye, mouth and snout occur as maturity approaches.)

## DISTINGUISHING CHARACTERS OF SIMILAR SPECIES OCCURRING IN THE AREA

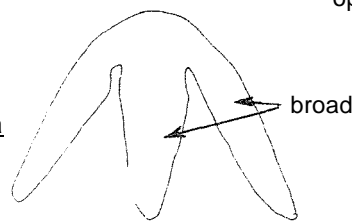
Anguilla bengalensis bengalensis and A. bengalensis labiata: constriction of vomerine band placed further forward; dorsal fin begins further back, its origin nearer to anus than to gill cover; slightly more vertebrae (106 to 115, against 100 to 110 in A. marmorata).

A. bicolor bicolor: dorsal begins further back, more or less over anus; plain coloration (although migratory phase may be silver below); broad bands of teeth on jaws and vomer; slightly more vertebrae (106 to 115).

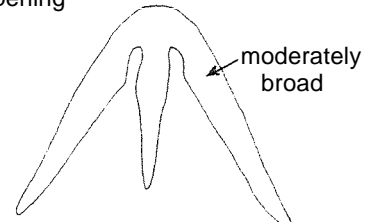
A. mossambica: plain coloration; bands of teeth on jaws moderately broad, without a tooth-free groove separating inner row from outer rows; slightly fewer vertebrae (100 to 106).



A. bengalensis bengalensis



A. bicolor bicolor



A. mossambica

### SIZE:

Maximum: 150 cm; common to about 80 cm.

### GEOGRAPHICAL DISTRIBUTION AND BEHAVIOUR:

Southeast coast of Africa from Durban northward as far as Mozambique, Madagascar, Réunion and Mauritius. Also eastward throughout Indonesia, China and much of the Indo-West Pacific.

Inhabits freshwaters within its area of distribution although it also occurs in estuaries and in the sea during very early life and near maturity.

### PRESENT FISHING GROUNDS:

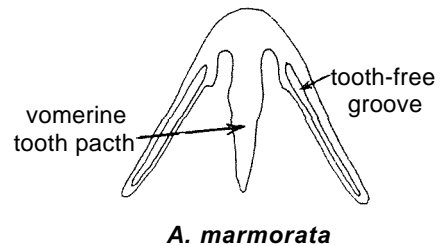
No definite fishing grounds; caught rather infrequently, especially in freshwaters throughout its range.

### CATCHES, FISHING GEAR AND FORMS OF UTILIZATION :

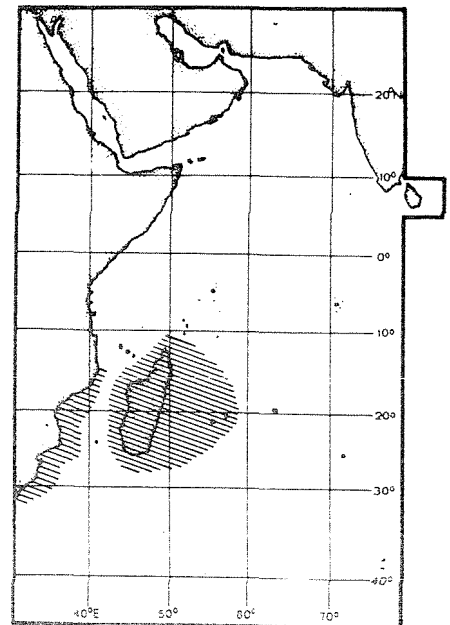
Separate statistics are not reported for this species.

Caught mainly by various types of nets, traps and by hook and line.

Marketed mainly fresh.

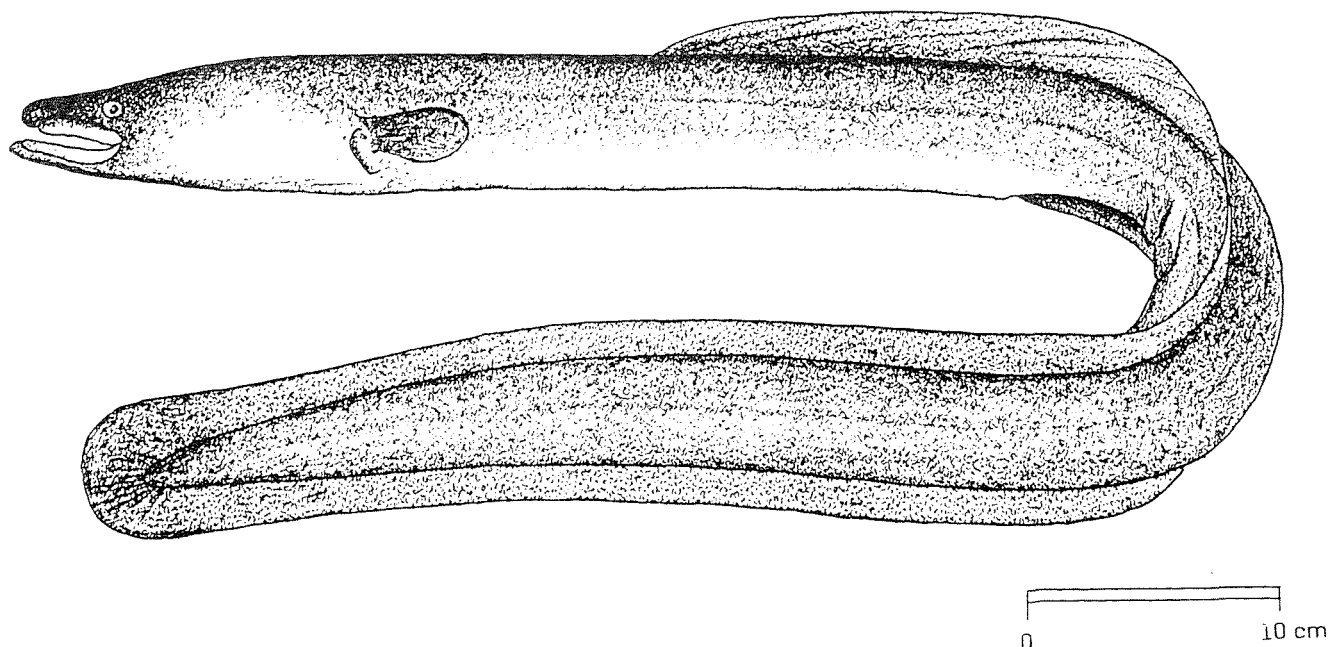


A. marmorata



## FAO SPECIES IDENTIFICATION SHEETS

FAMILY: ANGUILLIDAE

FISHING AREA 51  
(W. Indian Ocean)*Anguilla mossambica* (Peters, 1852)OTHER SCIENTIFIC NAMES STILL IN USE: *Muraena mossambica* Peters, 1852

## VERNACULAR NAMES:

FAO :           En - African longfin eel  
                   Fr - Anquille à longue nageoire (d'Afrique)  
                   Sp - Anguila de aleta larga (de Africa)

NATIONAL:

## DISTINCTIVE CHARACTERS:

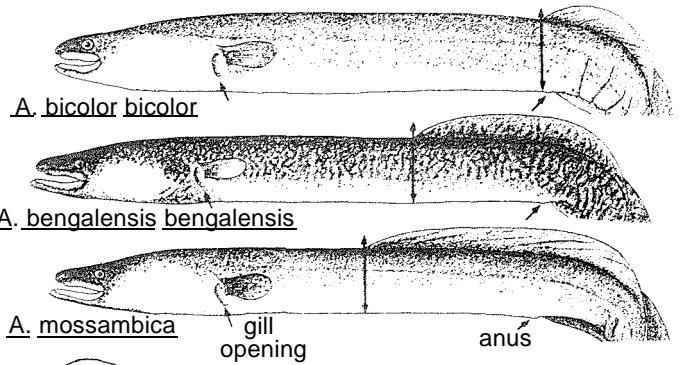
Body elongate, cylindrical in front, somewhat compressed along tail. Head conical, flattened dorsally; Body elongate cylindrical anteriorly, somewhat compressed along tail. Head conical, flattened dorsally; anterior nostril a narrow tube on face of snout; upper and lower lips prominent; lower jaw longer than upper, projecting; angle of mouth level with or just behind rear margin of eye; eye relatively small; teeth small, inconspicuous, multiserial, forming relatively narrow bands on jaws and vomer (roof of mouth); teeth on upper jaw in 4 to 6 longitudinal rows, those in the middle rows slightly larger, but no toothless groove between rows; vomerine tooth band tapering posteriorly. Dorsal fin origin slightly nearer gill opening than anus; pectoral fins present. Minute, elongate-oval scales present all over body, embedded in skin. Vertebrae 100 to 106.

Colour: olive to brown or black above, lighter below, especially in migratory phase when silver colour appears on belly. (Changes in size of eye, mouth and snout also occur as maturity approaches.)

**DISTINGUISHING CHARACTERS OF SIMILAR SPECIES OCCURRING IN THE AREA**

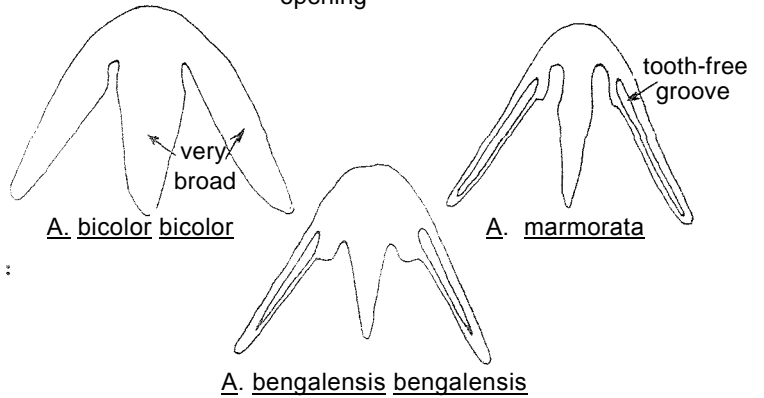
Anguilla bicolor bicolor: dorsal begins further back, more or less over anus; broader bands of teeth on jaws and vomer; more vertebrae (106 to 115, against 100 to 106 in A. mossambica).

A. marmorata (vertebrae 100 to 110), A. bengalensis bengalensis; vertebrae 106 to 112) and A. bengalensis labiata ;vertebrae 107 to 115): variegated yellow-olive over brown body markings; a tooth-free groove on jaws separating the inner row from outer rows. Furthermore, dorsal fin origin nearer anus than gill opening in A. bengalensis bengalensis and A. bengalensis labiata.



**SIZE:**

Maximum: 120 cm; common to about 80 cm.



**GEOGRAPHICAL DISTRIBUTION AND BEHAVIOUR:**

Southeast coast of South Africa, northward to Kenya; eastward to include Madagascar, Réunion and Mauritius.

Inhabits freshwaters within the area of its distribution although it also occurs in estuaries and in the sea during very early life and near maturity.

Forages actively at night, feeding mainly on a wide range of bottom invertebrates.

**PRESENT FISHING GROUNDS:**

No definite fishing grounds, but caught frequently, especially in freshwaters in the southern part of its range, especially during seaward migration of adults.

**CATCHES, FISHING GEAR AND FORMS OF UTILIZATION:**

Separate statistic are not reported for this species.

Caught mainly by various types of nets, traps and by hook and line.

Marketed mainly fresh.

