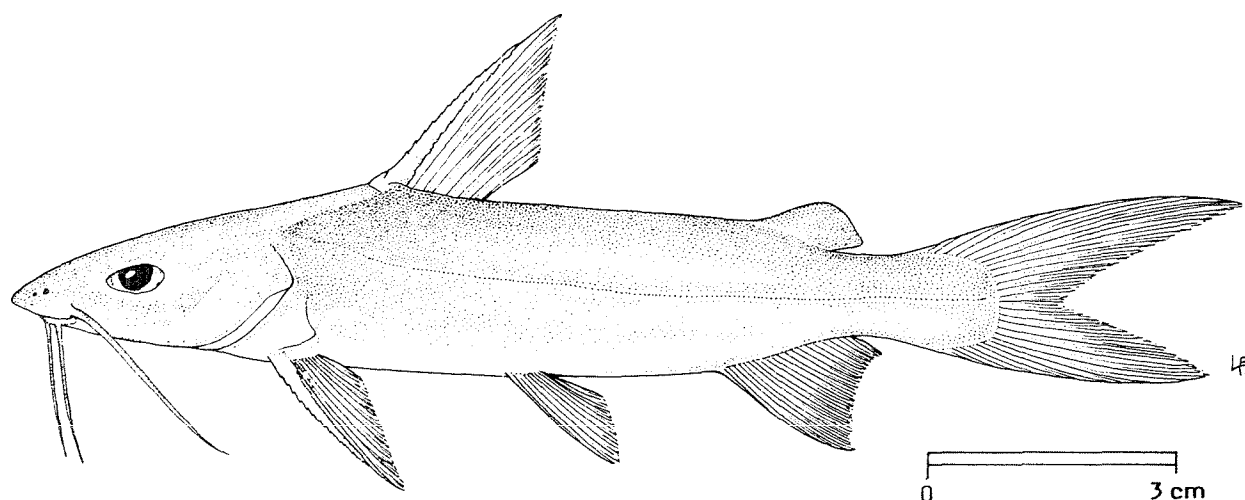


## FAO SPECIES IDENTIFICATION SHEETS

FAMILY: ARIIDAE

FISHING AREA 51  
(W. Indian Ocean)*Arius sumatranus* Bennett, 1830OTHER SCIENTIFIC NAMES STILL IN USE: *Tachysurus sumatranus* (Bennett, 1830)

## VERNACULAR NAMES:

FAO :           En - Goat catfish  
                  Fr - Mâchoiron surmulet  
                  Sp - Bagre chivato

NATIONAL :

## DISTINCTIVE CHARACTERS:

Dorsal profile of head as a gentle slope to first dorsal fin base; 3 pairs of barbels around mouth, the maxillary pair extending to pectoral fin base; head shield thinly granulated and rugose on occipital region only; supraoccipital process keeled, as long as broad at base, its hind end emarginate; median longitudinal groove narrow, reaching to base of supraoccipital process; predorsal plate U-shaped; premaxillary band of teeth in upper jaw 5 times as long as broad, mandibular band of teeth in lower jaw deeply curved and medially interrupted, palate teeth villiform, in a single ovate patch on each side, sparsely packed, and well separated. First dorsal and pectoral fins each with a strong spine; total anal fin rays 18 to 23.

Colour: dark brown above becoming lighter on sides and on belly; fins grey-edged, adipose fin greyish.

**DISTINGUISHING CHARACTERS OF SIMILAR SPECIES OCCURRING IN THE AREA:**

Arius caelatus: palate tooth patches much larger than in A. sumatranus, triangular and densely packed.

A. platystomus: palate tooth patches large, oval, and more densely packed; snout duck-bill shaped.

A. subrostratus: palate tooth patches with densely packed teeth; snout long, spatulate, maxillary barbels usually not extending beyond eye.

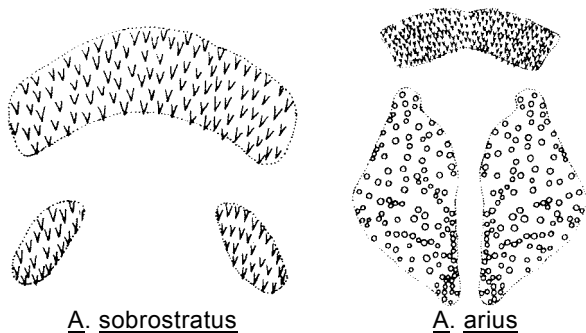
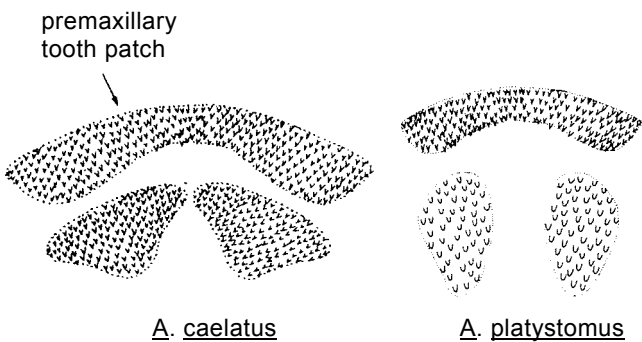
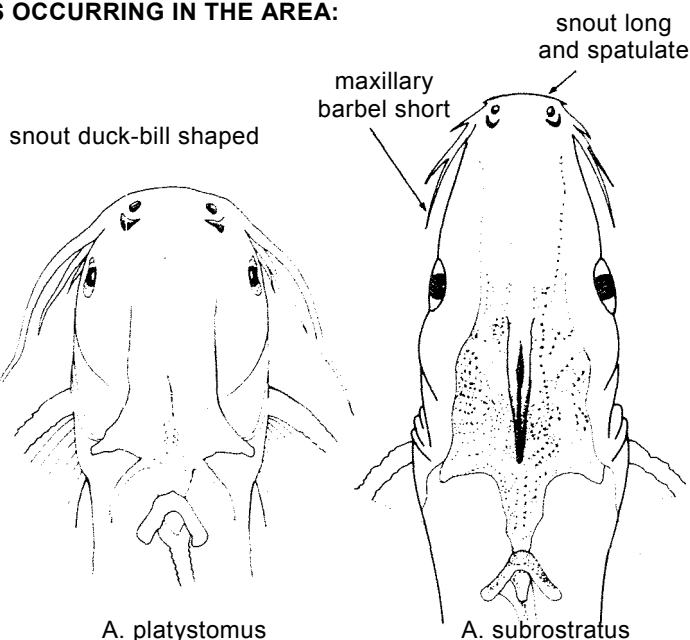
A. arius, A. jella, A. maculatus and A. tenuispinis: tooth patches on roof of mouth large and elliptical.

A. africanus, A. madagascariensis and A. venosus: distribution restricted to East Africa.

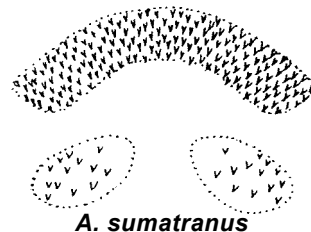
All other Arius species: have more than one (2 or 3) tooth patches on each side of roof of mouth.

Batrachocephalus mino: maxillary barbels absent.

Osteogeneiosus militaris: only a pair of stiff, semiosseous maxillary barbels present.



premaxillary and palate (roof of mouth) tooth patches



**SIZE:**

Maximum: 32 cm: common between 10 and 15 cm.

**GEOGRAPHICAL DISTRIBUTION AND BEHAVIOUR:**

Within the area, found from Pakistan to the west coast of India and Sri Lanka. Elsewhere, from the east coast of India to Singapore, Thailand, Sumatra, Java, Borneo, Madura, Banka and the Philippines.

Found in marine waters, as well as estuaries and tidal rivers.

Feeds mainly on invertebrates.

**PRESENT FISHING GROUNDS:**

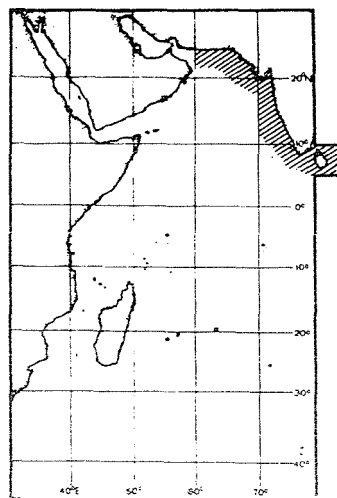
Mostly inshore waters and estuaries.

**CATCHES, FISHING GEAR AND FORMS OF UTILIZATION :**

Separate statistics are not reported for this species.

Caught with shore seines, dipnets, and on hook and line.

Marketed mostly fresh.



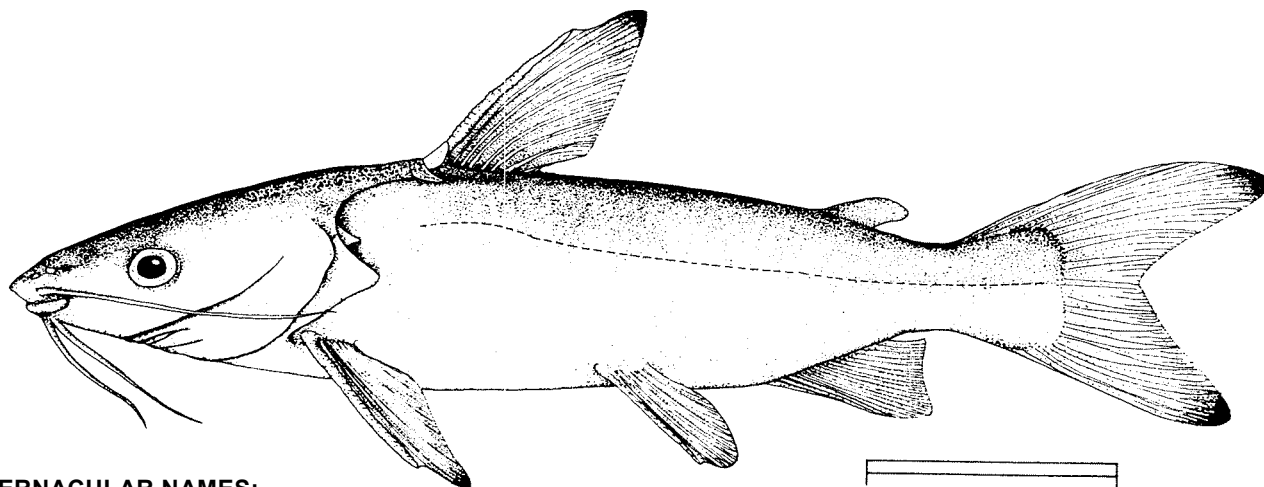
FAO SPECIES IDENTIFICATION SHEETS

FAMILY: ARIIDAE

FISHING AREA 51  
(W. Indian Ocean)

*Arius tenuispinis* Day, 1877

OTHER SCIENTIFIC NAMES STILL IN USE: *Hemipimelodus tenuispinis* Misra, 1976  
*Tachysurus tenuispinis* (Day, 1877)



VERNACULAR NAMES:

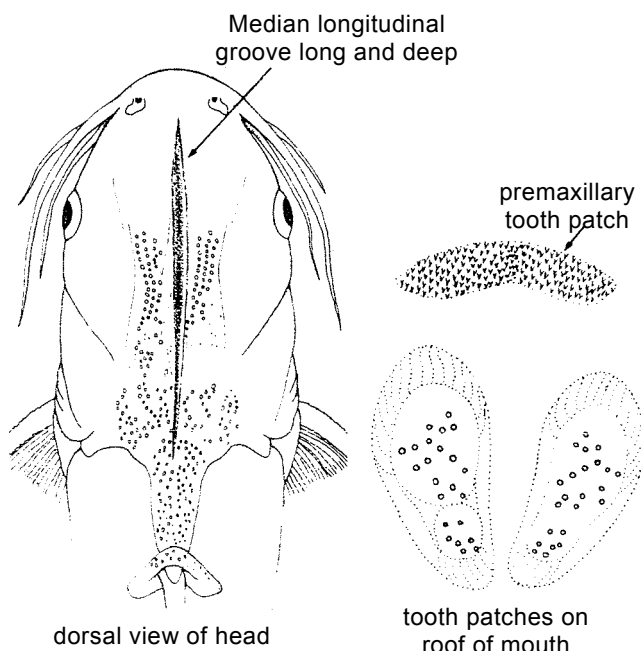
FAO : En – Thinspine sea catfish  
Fr - Máchoiron aiguillette  
Sp - Bagre aqujilla

NATIONAL:

DISTINCTIVE CHARACTERS:

Dorsal profile of head as a gentle slope to first dorsal fin base; 3 pairs of barbels around mouth, the maxillary pair extending to pectoral fin base; head shield thinly granulated and rugose; supraoccipital process keeled, longer than wide at base its hind end emarginate; median longitudinal groove long, narrow, deep, running onto supraoccipital process; predorsal plate sharply conical; premaxillary band of teeth in upper jaw 4 or 5 times as long as broad, mandibular band of teeth in lower jaw very narrow, thin and medially interrupted; palate teeth villiform along outer margin, globular along inner margin, in a single elliptical shoe-shaped large patch on each side, placed far back in the buccal cavity. Firs: dorsal and pectoral fins each with a strong spine, the dorsal fin spine thin, as long as head (excluding snout) and equal to or slightly longer than pectoral fin spine; total anal fin rays 18.

Colour: cement-grey on the dorsal surface of head and upper half of body, merging to silvery grey on belly; tips of dorsal, pectoral and caudal fins dark.



**DISTINGUISHING CHARACTERS OF SIMILAR SPECIES OCCURRING IN THE AREA:**

The long, deep and continuous median longitudinal groove and the shoe-shaped tooth patches placed far back on roof of mouth, readily distinguish this species from all the other sea catfishes occurring in the area.

**SIZE:**

Maximum: 36 cm; common between 20 and 25 cm.

**GEOGRAPHICAL DISTRIBUTION AND BEHAVIOUR:**

Within the area, occurring along the west coast of India and the east coast of Africa.

Common in marine coastal waters to 50 m depth.

Feeds mainly on invertebrates and small fishes.

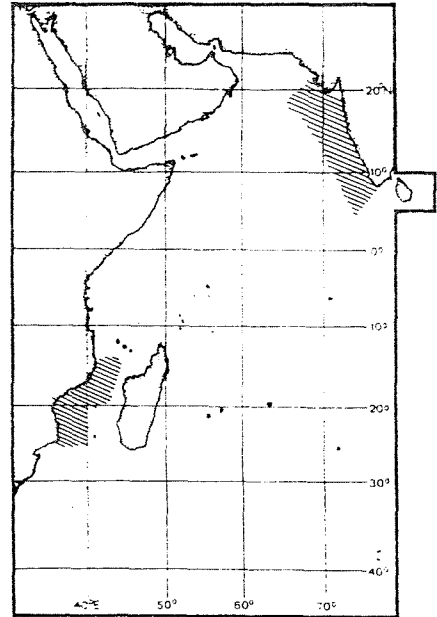
**PRESENT FISHING GROUNDS:**

Coastal waters throughout its range.

**CATCHES, FISHING GEAR AND FORMS OF UTILIZATION:**

Separate statistics are not reported for this species.

Caught mainly with bagnets, dipnets, bamboo stake traps, and on hook and line.

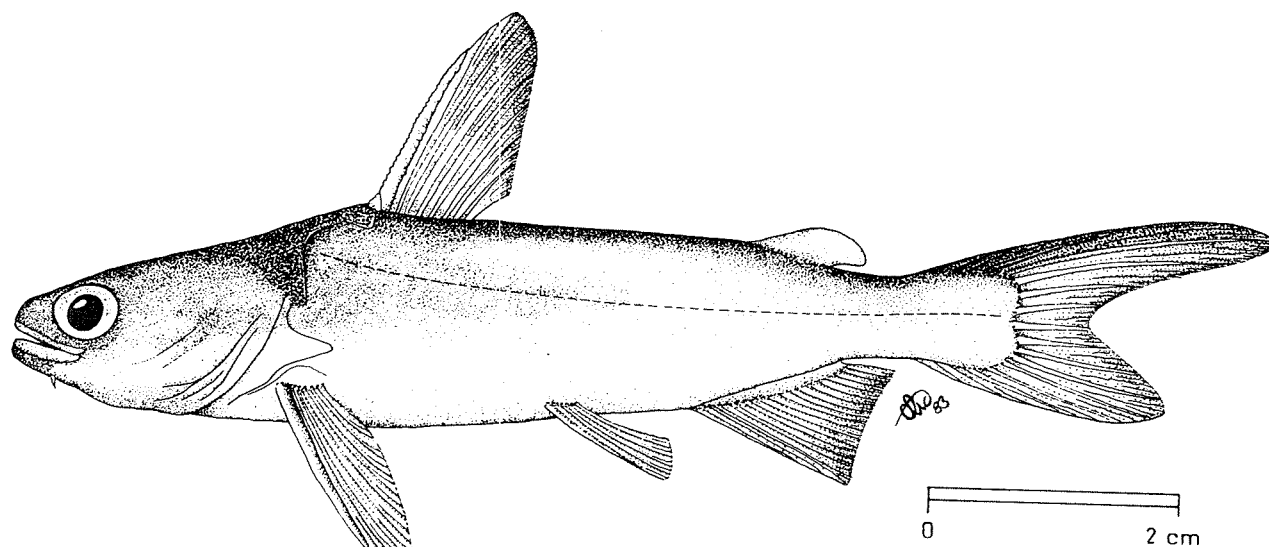


## FAO SPECIES IDENTIFICATION SHEETS

FAMILY : ARIIDAE

FISHING AREA 51  
(W. Indian Ocean)Batrachocephalus mino (Hamilton, 1822)

OTHER SCIENTIFIC NAMES STILL IN USE: None



## VERNACULAR NAMES:

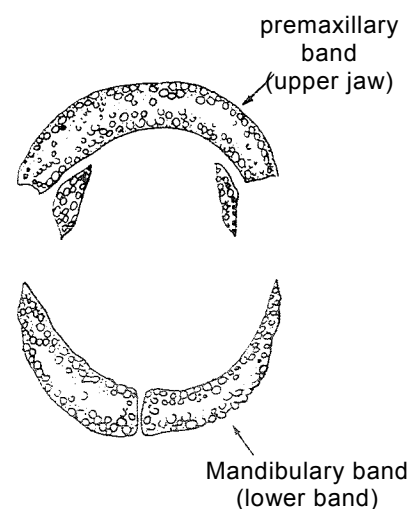
FAO :           En - Beardless sea catfish  
                  Fr - Mâchoiron imberbe  
                  Sp - Bagre lampiño

NATIONAL:

## DISTINCTIVE CHARACTERS:

Head depressed, froglike, mouth widely arched, cleft of mouth reaching to midorbit, lower jaw prominent; 1 or 2 pairs of minute, rudimentary mental barbels present, maxillary pair absent; head shield granulated in occipital region only; subraoccipital process rough, longer than wide at base, its hind end curved; median longitudinal groove long, not reaching to base of supraoccipital process; predorsal plate crescentic and narrow; premaxillary band of teeth in upper jaw conical, in 4 or 5 series, mandibular band of teeth in lower jaw curved and medially interrupted, palate teeth (on roof of mouth) conical, in a broad longitudinal band. First dorsal and pectoral fins each with a strong spine; total anal fin rays 19 to 21.

Colour: light brown, darkest on back and upper lobe of caudal fin.



## **DISTINGUISHING CHARACTERS OF SIMILAR SPECIES OCCURRING IN THE AREA:**

All other species of Ariidae: have a pair of maxillary barbets, head not froglike.

## **SIZE:**

Maximum: 25 cm; common between 8 and 10 cm.

## **GEOGRAPHICAL DISTRIBUTION AND BEHAVIOUR:**

Within the area and along the west coast of India and Sri Lanka. Elsewhere, from the east coast of India to Bangladesh, Burma, Sumatra, Java and Borneo.

Occurs in marine coastal waters, as well as in estuaries and tidal rivers.

Feeds on invertebrates and small fishes.

## **PRESENT FISHING GROUNDS:**

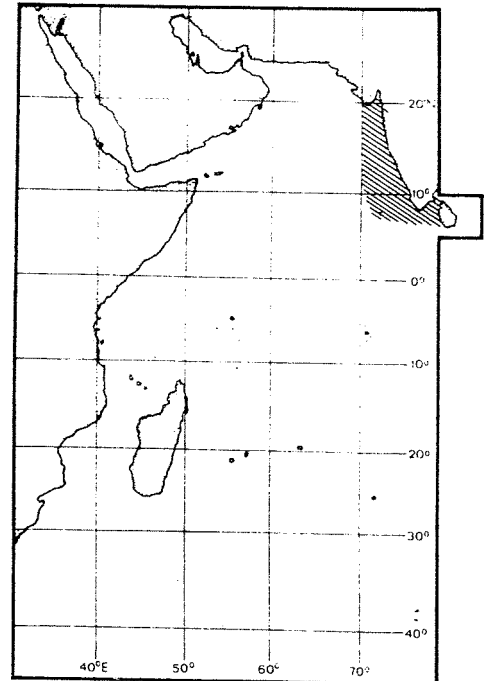
Mostly marine coastal waters and estuaries.

## **CATCHES, FISHING GEAR AND FORMS OF UTILIZATION:**

Separate statistics are not reported for this species.

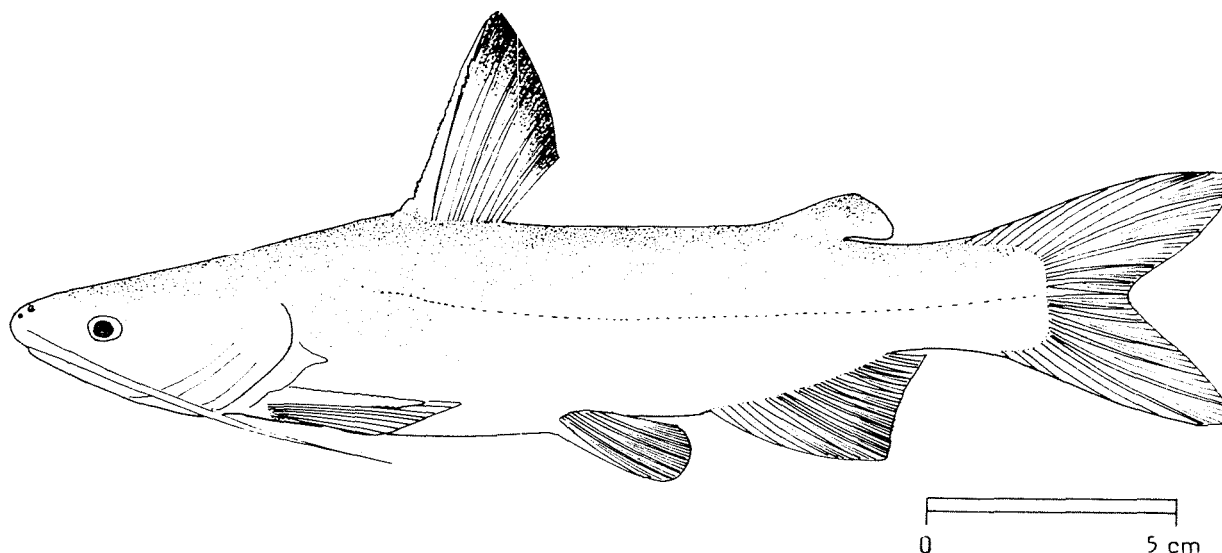
Caught with shore seines, dipnets, stake traps and set bagnets.

Marketed mostly fresh.



## FAO SPECIES IDENTIFICATION SHEETS

FAMILY: ARIIDAE

FISHING AREA 51  
(W. Indian Ocean)Osteogeneiosus militaris (Linnaeus, 1758)OTHER SCIENTIFIC NAMES STILL IN USE: Osteogeneiosus sthenocephalus Day, 1877

## VERNACULAR NAMES:

FAO :           En - Soldier catfish  
                   Fr - Mâchoiron soldat  
                   Sp - Bagre soldado

NATIONAL:

## DISTINCTIVE CHARACTERS :

Dorsal profile of head rising as a gentle slope to first dorsal fin base; only one pair of stiff, semiosseous maxillary barbels, mental barbells absent; head shield smooth without granulations or rugose striations; supraoccipital process narrow, more than twice longer than broad, its hind end narrowly curved; median longitudinal groove broad, not reaching to base of supraoccipital process; predorsal plate crescent shaped; premaxillary band of teeth in upper jaw 5 times as long as broad, mandibular band of teeth narrow, medially interrupted; palate teeth conical, in 2 widely separated but posteriorly converging semioval patches on each side. First dorsal and pectoral fins each with a strong spine; total anal fin rays 19 to 22.

Colour: top of head and back intense dark blue. belly with lighter shades sparingly dotted with black spots; greyish white, minutely spotted with black, tips of first dorsal and adipose fins dark blue.

## DISTINGUISHING CHARACTERS OF SIMILAR SPECIES OCCURRING IN THE AREA:

All other species of Ariidae: have 1 or 2 pairs of mental barbels (absent in *O. militaris*); maxillary barbels slender (not stiff or semiosseous).

### SIZE:

Maximum: 35 cm; common between 20 and 26 cm.

### GEOGRAPHICAL DISTRIBUTION AND BEHAVIOUR:

Within the area, from the west coast of India to Sri Lanka. Elsewhere, occurring from the east coast of India to Bangladesh, Burma, Malacca, Singapore, Sumatra, Java and Borneo.

Lives in marine, coastal waters, as well as in estuaries and river mouths. Mostly in turbid waters of the shallower parts of the continental shelf.

Feeds mainly on invertebrates and small fishes.

### PRESENT FISHING GROUNDS:

Mostly coastal waters and estuaries.

### CATCHES, FISHING GEAR AND FORMS OF UTILIZATION:

Separate statistics are not reported for this species.

Caught with shore seines, dipnets, stake traps and set bagnets.

Marketed mostly fresh.

