

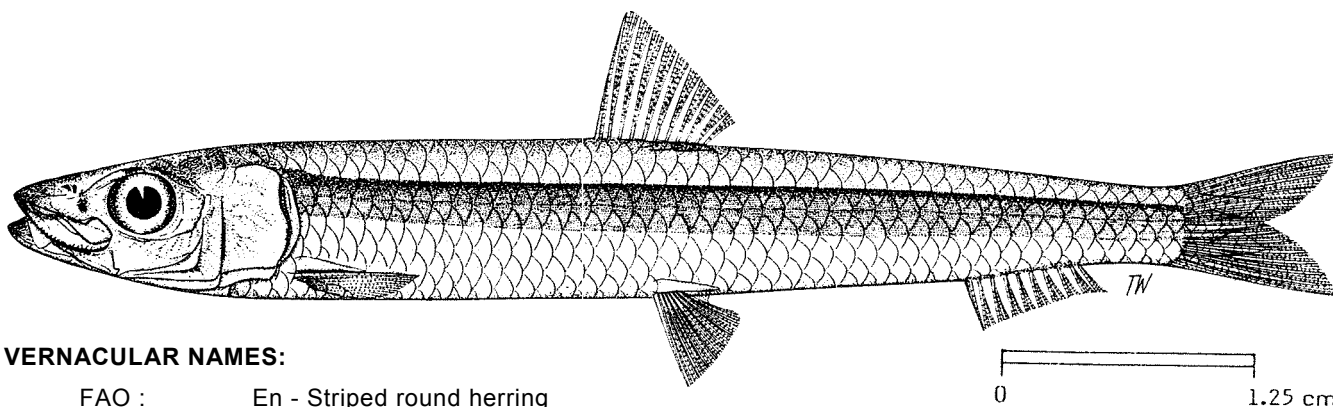
FAO SPECIES IDENTIFICATION SHEETS

FAMILY: CLUPEIDAE

FISHING AREA 51
(W Indian Ocean)

Spratelloides gracilis (Schlegel, 1846)

OTHER SCIENTIFIC NAMES STILL IN USE: *Stolephorus japonicus*: Fowler, 1941



VERNACULAR NAMES:

- FAO : En - Striped round herring
- Fr - Hareng gracile
- Sp - Arenquillo de banda

NATIONAL:

DISTINCTIVE CHARACTERS:

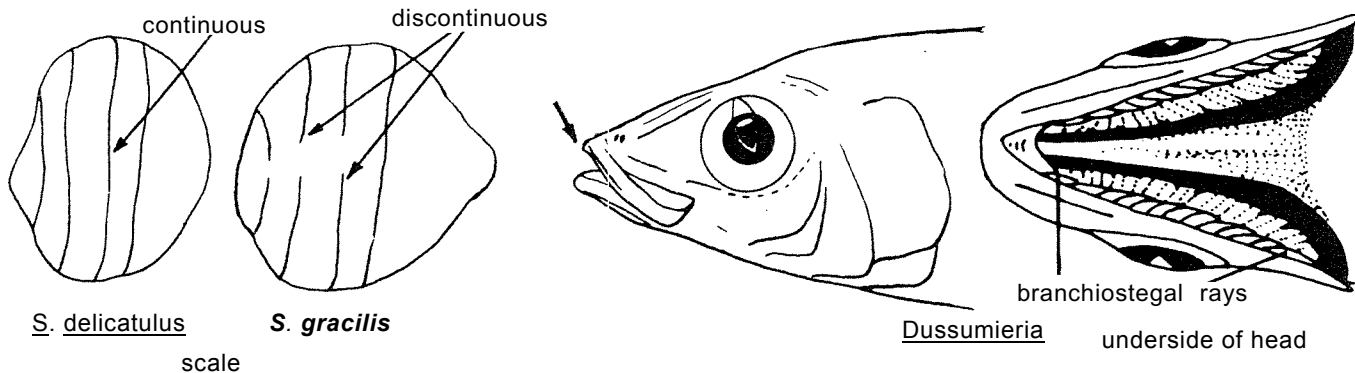
Body slender, subcylindrical; belly rounded, without a keel of scutes (except for the W-shaped pelvic scute). Branchiostegal rays usually 7. Dorsal fin at about mid-point of body, pelvic fins below dorsal fin base, anal fin very short and far behind dorsal fin base. Vertical striae not meeting at centre of scales.

Colour: back blue/green, flanks with a distinct silver stripe.

DISTINGUISHING CHARACTERS OF SIMILAR SPECIES OCCURRING IN THE AREA:

Spratelloides delicatulus: body stout; no silver stripe along flanks; also, vertical scale striae continuous across scale.

Juveniles of *Dussumieria* and *Etrumeus*: mouth small, snout pointed: branchiostegal rays 14 to 19 (usually 7 in *Spratelloides*); also, almost translucent when fresh.



S. delicatulus

S. gracilis

Dussumieria

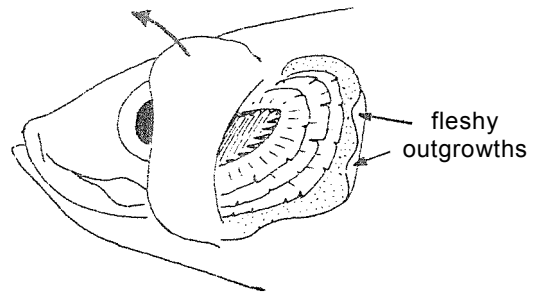
underside of head

scale

Juveniles of Sardinella and Herklotsichthys: gill opening with two fleshy outgrowths, and scutes present along belly.

Other species of round-bodied Clupeidae (Pellonulinae): first (anterior) supramaxilla absent; also 1 to 9 unkeeled scutes before pelvic fin base (Ehirava, Dayella, Gilchristella), or last two anal fin rays forming a separate finlet (Spratellomorpha).

All other species of Clupeidae: scutes present and forming a keel along belly; also, no prominent dark spot before eyes.



Sardinella, Herklotsichthys

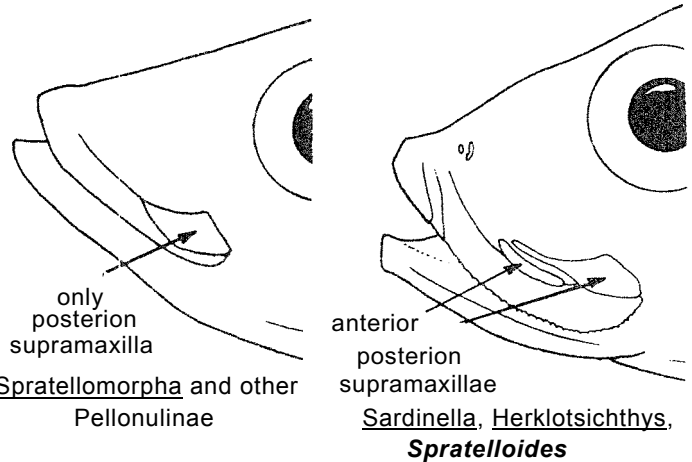
SIZE:

Maximum: 9.5 cm, common to 7 cm.

GEOGRAPHICAL DISTRIBUTION AND BEHAVIOUR:

Probably throughout the area, but no certain records are available south of Mozambique, South Africa and the various islands; elsewhere, eastward to east and west coasts of Australia, to Samoa and north to Japan.

Pelagic in coastal waters.



PRESENT FISHING GROUNDS:

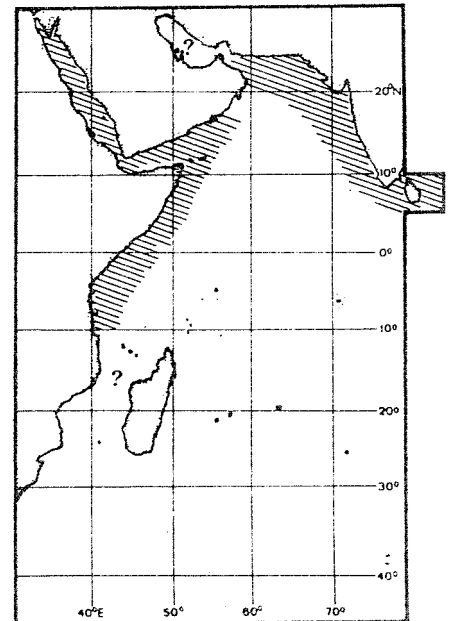
Caught throughout its range, but no special fished.

CATCHES, FISHING GEAR AND FORMS OF UTILIZATION:

Separate statistics are not reported for this species.

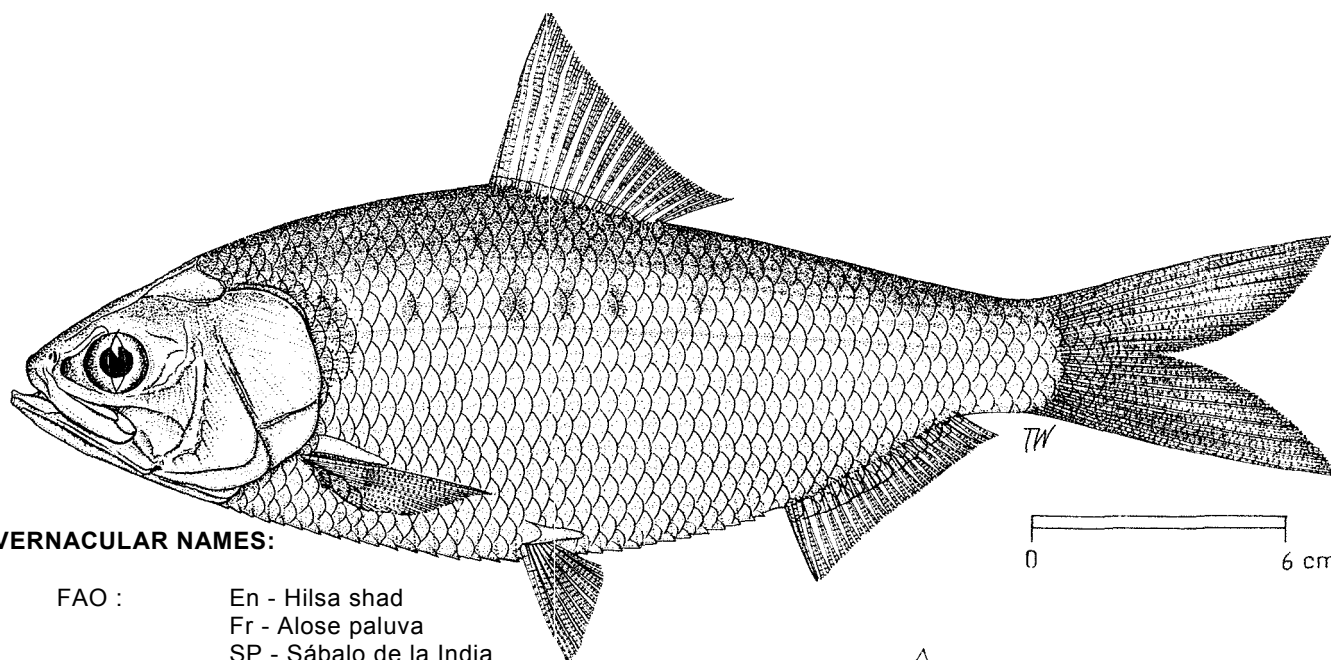
Caught with beach seines.

Marketed fresh or dried salteo.



FAO SPECIES IDENTIFICATION SHEETS

FAMILY: CLUPEIDAE

FISHING AREA 51
(W. Indian Ocean)Tenualosa ilisha (Ham.Buch., 822)OTHER SCIENTIFIC NAMES STILL IN USE : Hilsa ilisha: Fowler, 1941; Whitehead, 1973

VERNACULAR NAMES:

FAO : En - Hilsa shad
Fr - Alose paluva
SP - Sábalo de la India

NATIONAL:

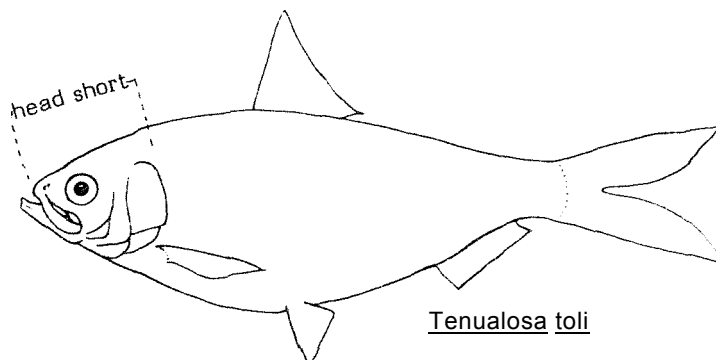
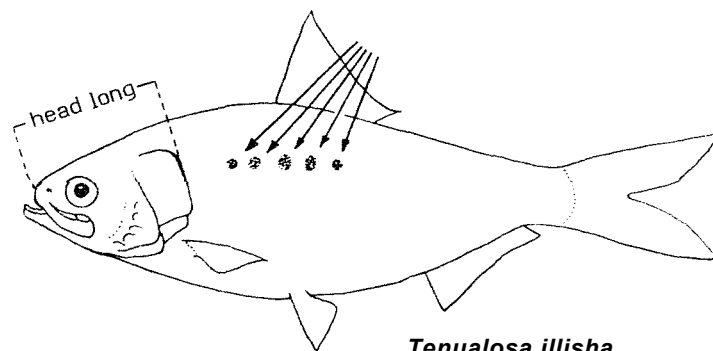
DISTINCTIVE CHARACTERS:

Body fusiform, moderately deep and compressed; belly with a distinct keel of 30 to 33 scutes. Head length 28 to 32% of standard length; top of head without a striated area; upper jaw with a distinct median notch; gillrakers very fine and numerous. Caudal fin moderate, 25 to 31% of standard length.

Colour: back bluelgreen, flanks silvery, with a dark blotch behind gill opening, followed by a series of small spots or blotches along flank.

DISTINGUISHING CHARACTERS OF SIMILAR SPECIES OCCURRING IN THE AREA:

Tenualosa soli: head shorter, 22 to 27% of standard length and caudal fin longer, 31 to 34% of standard length (28 to 32% and 25 to 31% respectively in T. ilisha); total number of ventral scutes 28 to 30 (30 to 33 in T. ilisha); at most a diffuse spot behind gill opening, but never any spots on flanks.



Hilsa kelee: top of head with numerous fronto-parietal striae; posterior part of scales with perforations; and gillrakers on inner arches strongly curled.

Sardinella and Herklotsichthys species: upper jaw rounded when seen from front (a distinct notch in Tenualosa).

Species of gizzard shad (Nematalosa, Anodontostoma): mouth inferior, last dorsal fin ray filamentous in Nematalosa and no anterior supramaxilla.

SIZE:

Maximum: 60 cm; common to 36 cm.

GEOGRAPHICAL DISTRIBUTION AND BEHAVIOUR:

Northeastern part of the area, from the "Gulf" to Sri Lanka; elsewhere, in the Bay of Bengal.

Pelagic in coastal waters, ascending rivers to breed. For further information see FAO Synopsis FB/S25, 1963.

PRESENT FISHING GROUNDS:

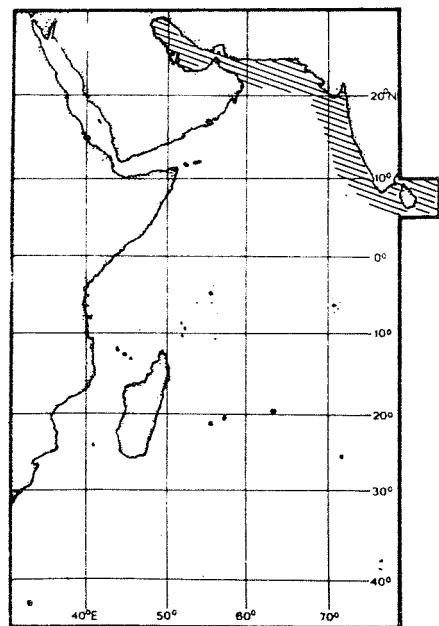
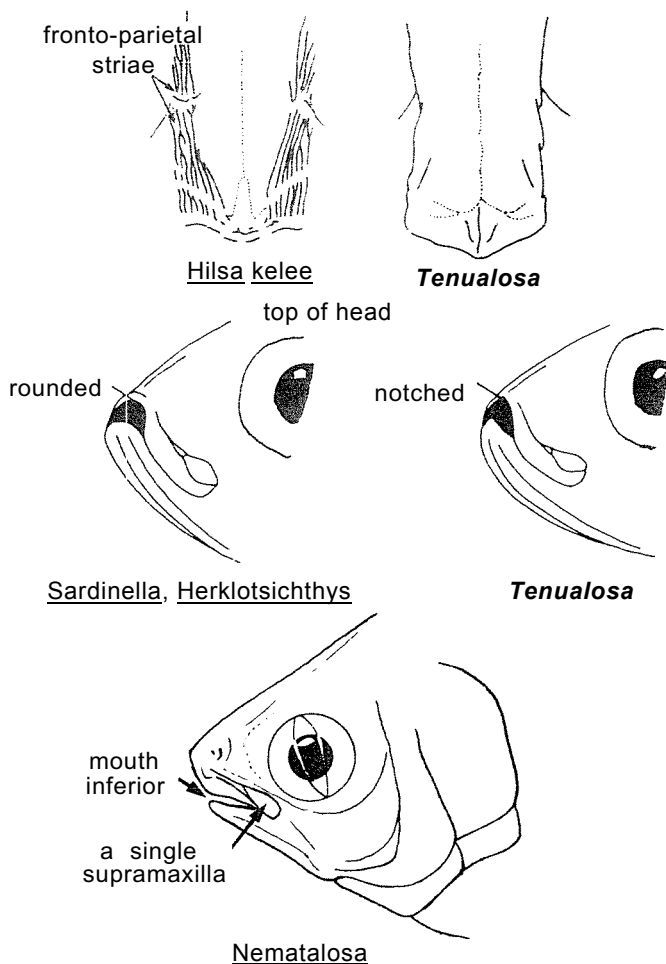
Estuaries and rivers throughout its range, also in the sea.

CATCHES, FISHING GEAR AND FORMS OF UTILIZATION:

The reported catch of I. ilisha from Fishing Area 51 totalled about 4 650 t in 1980. However, much of the catch is mixed with other species of the genus.

Caught with fishing weirs and drift gillnets in estuaries and rivers during upstream migration; also with gillnets or seines in the sea.

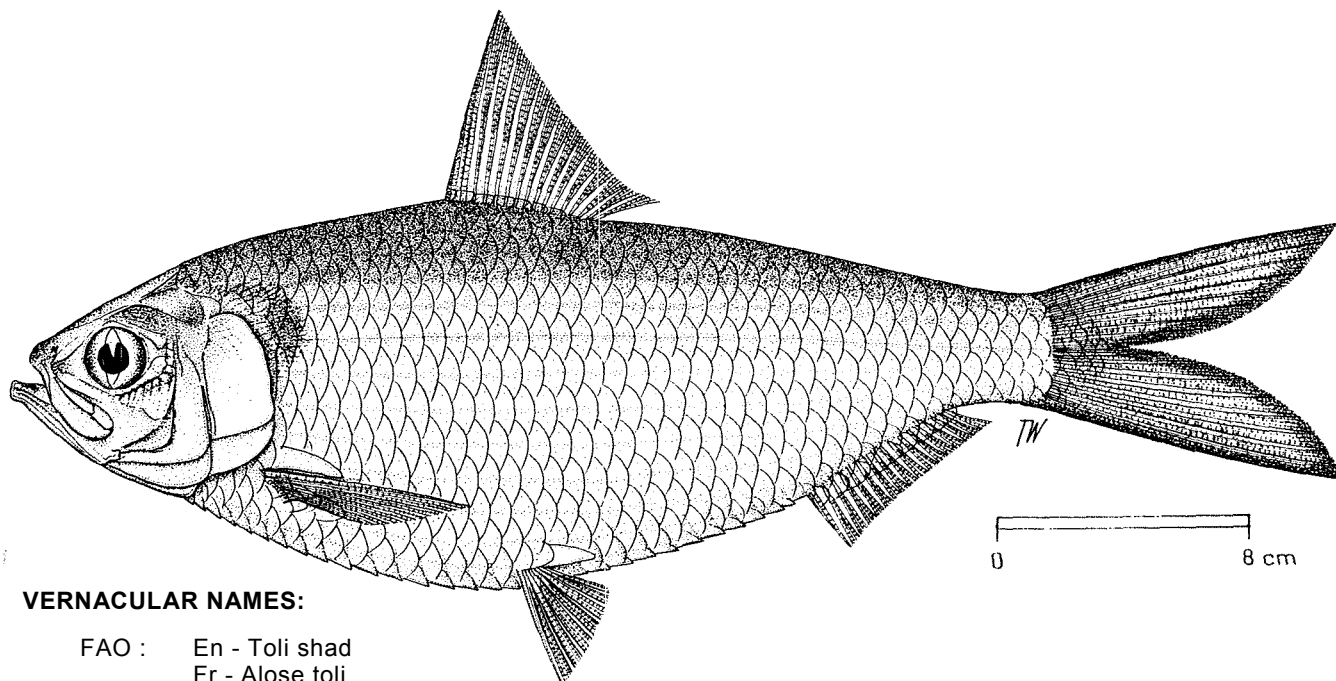
Marketed fresh and dried-salted.



FAO SPECIES IDENTIFICATION SHEETS

FAMILY: CLUPEIDAE

FISHING AREA 51
(W. Indian Ocean)
Tenualosa toli (Valenciennes, 1847)

OTHER SCIENTIFIC NAMES STILL IN USE : *Hilsa toli*: Fowler, 1941; Whitehead, 1973
**VERNACULAR NAMES:**
 FAO : En - Toli shad
 Fr - Alose toli
 Sp - Sábalo toli

NATIONAL:

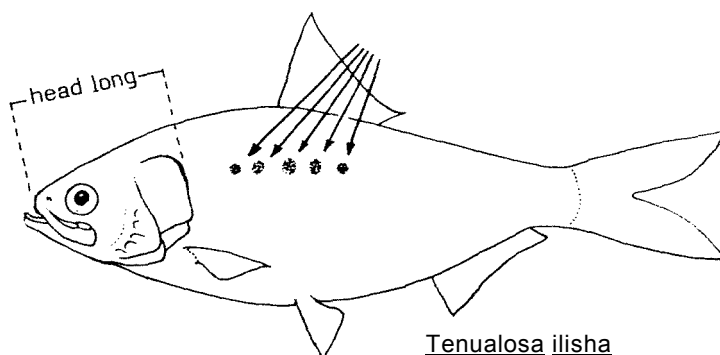
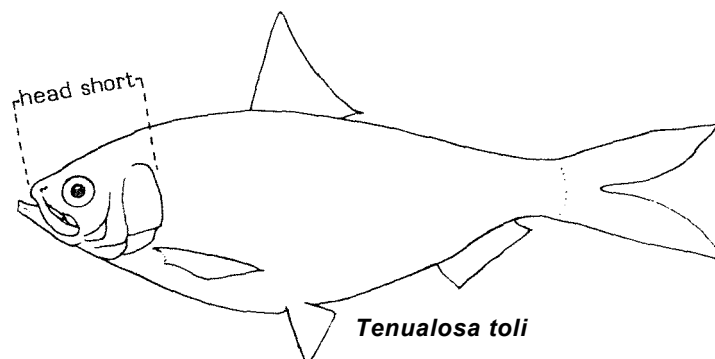
DISTINCTIVE CHARACTERS:

Body fusiform, moderately deep and compressed; belly with a distinct keel of 28 to 30 scutes. Head length 25 to 27% of standard length; top of head without a striated area; upper jaw with a distinct median notch; gillrakers very fine and numerous. Caudal fin long, 31 to 34% of standard length.

Colour: back blue/green, flanks silvery, at most a diffuse dark blotch behind gill opening but no other spots on flank.

DISTINGUISHING CHARACTERS OF SIMILAR SPECIES OCCURRING IN THE AREA:

Tenualosa ilisha: head longer, 28 to 32% of standard length and caudal fin shorter, 25 to 31% of standard length (25 to 27% and 31 to 34% respectively in *T. toli*); total number of ventral scutes 30 to 33 728 to 30 in *T. toli*); a dark blotch behind gill opening, followed by a series of small spots or blotches along flanks.



Hilsa kelee: top of head with numerous fronto-parietal striae; posterior part of scales with perforations; and gillrakers on inner arches strongly curled.

Sardinella and Herklotsichthys species: upper jaw rounded when seen from front a distinct notch in Tenualosa).

Species of gizzard shad (Nematalosa, Anodontostoma): mouth inferior, last dorsal fin ray filamentous in Nematalosa and no anterior supramaxilla.

SIZE:

Maximum: 50 cm; common to 40 cm.

GEOGRAPHICAL DISTRIBUTION AND BEHAVIOUR:

Western coasts of India (apparently not to the "Gulf").

Pelagic in coastal waters, ascending rivers to breed.

PRESENT FISHING GROUNDS:

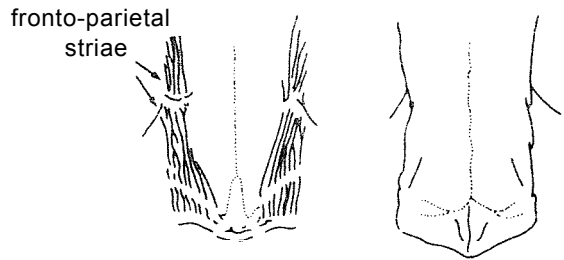
Estuaries and rivers throughout its range, also in the sea.

CATCHES, FISHING GEAR AND FORMS OF UTILIZATION:

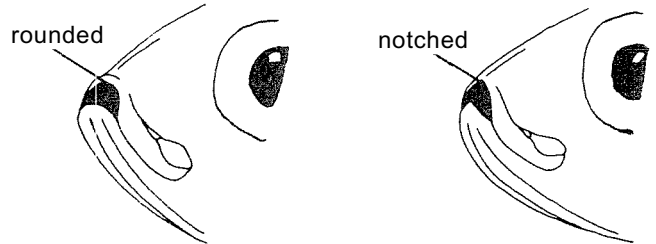
Separate statistics are not reported for this species. The total reported catch for diadromous "Hilsa" (i.e. Tenualosa toli and T. ilisha) for this area in 1980 was about 7 100 t.

Caught with fishing weirs and drift gillnets in estuaries and rivers during upstream migration; also with gillnets or seines in the sea.

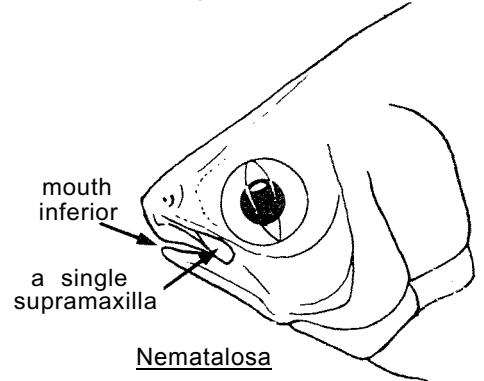
Marketed fresh and dried-salted.



Hilsa kelee Tenualosa
Top of head



Sardinella, Herklotsichthys Tenualosa



Nematalosa

