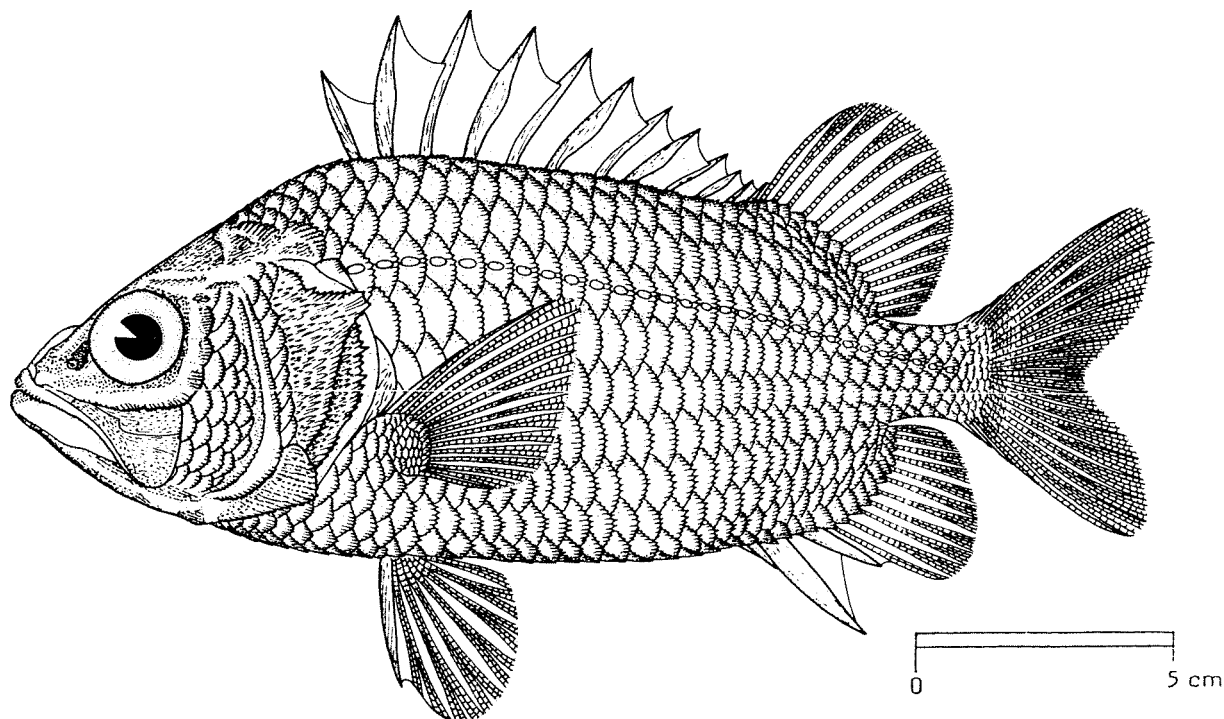


FAO SPECIES IDENTIFICATION SHEETS

FAMILY: HOLOCENTRIDAE

FISHING AREA 51
(W. Indian Ocean)Ostichthys archiepiscopus (Valenciennes, 1862)OTHER SCIENTIFIC NAMES STILL IN USE: Ostichthys pillwaxii (Steindachner, 1893)

VERNACULAR NAMES:

FAO : En - Straighthead soldierfish
 Fr - Marignan cuirassé
 Sp - Candil acorazado

NATIONAL:

DISTINCTIVE CHARACTERS:

Body oblong, depth 2.1 to 2.35 times in standard length; caudal peduncle slender, its least depth 3.8 to 4.7 times in head. Dorsal profile of head straight; head length 2.45 to 2.6 times in standard length; snout 3.7 to 4.3 times in head; no anteriorly directed spine on nasal bone of adults and no large spine at corner of preopercle. Premaxillary groove broadly V-shaped; vomerine teeth in a V-shaped patch. Dorsal fin continuous though deeply notched between spinous and soft portions; dorsal fin with 12 spines (the last spine shortest and close to soft portion of fin) and 13 or 14 soft rays; anal fin with 4 spines (the 3rd much stronger and larger) and 11 soft fin rays; pectoral with 15 fin rays. Lateral line scales 28 to 30 (usually 29); rows of scales above lateral line to middle of spinous portion of dorsal fin 2.5; a half scale directly anterior to upper half of first lateral line scale. Gillrakers 7 to 9+13 to 15.

Colour: light red, the centres of the scales paler, thus forming faint longitudinal bands.

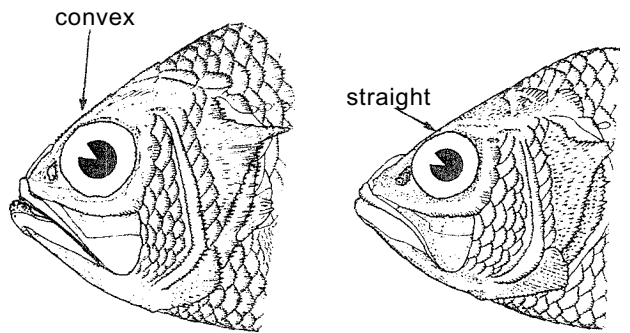
DISTINGUISHING CHARACTERS OF SIMILAR SPECIES OCCURRING IN THE AREA:

Ostichthys kaianus: dorsal profile of head slightly convex; no half scale anterior to first lateral line scale; lateral line scales usually 28; pectoral fin rays usually 16.

O. delta: only 11 dorsal spines (12 in O. archiepiscopus)

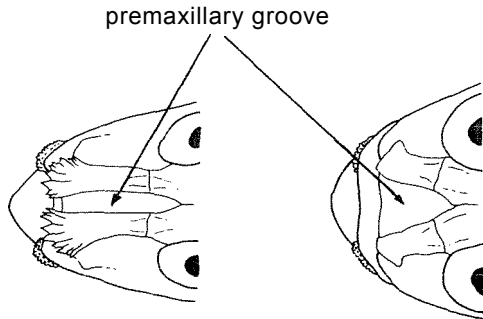
O. acanthorhinus: nasal bones with sharp spine pointing forward, and another spine at angle of preopercle.

Other Holocentridae: more than 30 lateral line scales, or premaxillary groove narrow anteriorly (Pristilepis) or a sharp spine at angle of preopercle.



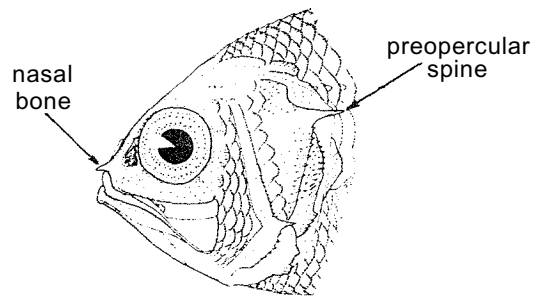
O. kaianus

O. archiepiscopus



Pristilepis

Ostichthys



O. acanthorhinus

SIZE:

Maximum: 28 cm; common to 24 cm.

GEOGRAPHICAL DISTRIBUTION AND BEHAVIOUR:

Mauritius and Réunion, but may be expected from other Western Indian Ocean localities. Elsewhere, in Japan and Hawaiian Islands.

Occurs at depths of about 200 m.

PRESENT FISHING GROUNDS:

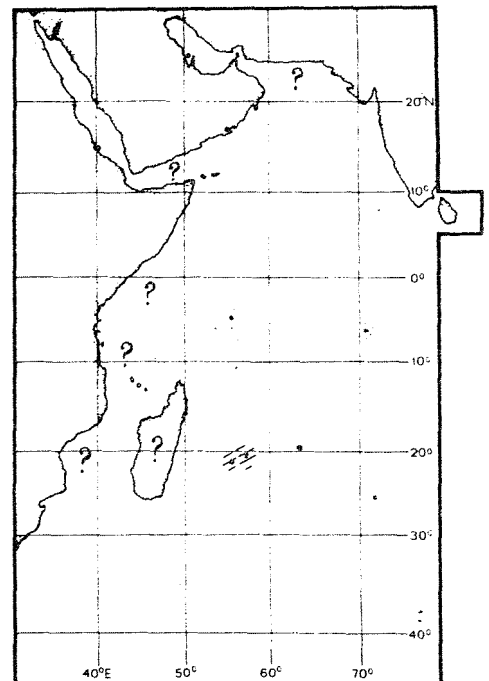
No special fishing areas.

CATCHES, FISHING GEAR AND FORMS OF UTILIZATION:

Separate statistics are not reported for this species.

Caught in trawls and by hook and line.

Marketed fresh.

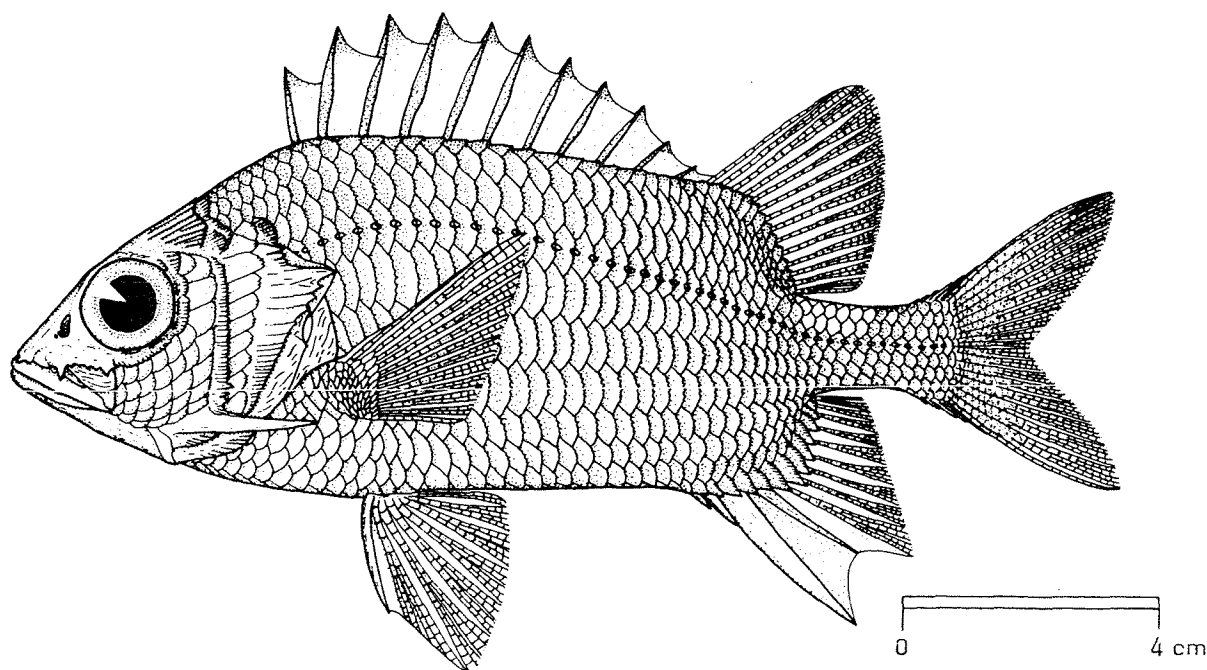


FAO SPECIES IDENTIFICATION SHEETS

FAMILY: HOLOCENTRIDAE

FISHING AREA 51
(W. Indian Ocean)Sargocentron caudimaculatum (Rüppell, 1835)

OTHER SCIENTIFIC NAMES STILL IN USE:

Adioryx caudimaculatus (Rüppell, 1835)Holocentrus caudimaculatus: Smith & Smith, 1963Holocentrum andamanense Day, 1870

VERNACULAR NAMES:

FAO : En - Silverspot squirrelfish
 Fr - Marignan rouge et argent
 Sp - Candil platero

NATIONAL:

DISTINCTIVE CHARACTERS:

Body depth 2.4 to 2.9 times in standard length. Dorsal profile of head slightly convex; preopercular spine long, the length about one eye diameter. Nasal fossa with 1 or 2 spinules on anterior margin. Dorsal fin with 11 spines (the last spine shortest) and 14 soft fin rays; anal fin with 4 spines and 9 soft fin rays; pectoral fin rays 13 or 14 (usually 14). Lateral line scales 40 to 43; scale rows above lateral line to middle of spinous portion of dorsal fin 2.5.

Colour: red, the scales rimmed posteriorly with silvery white; a saddle-like silvery white spot dorsally on caudal peduncle; spinous dorsal fin light red to whitish, the outer triangular part of each membrane deep red; no blackish markings. In life the posterior third of the body may be silvery white.

DISTINGUISHING CHARACTERS OF SIMILAR SPECIES OCCURRING IN THE AREA:

Sargocentron spiniferum: 3.5 rows of scales between lateral line and middle of spinous portion of dorsal fin; nasal fossa without spinules; spinous portion of dorsal fin solid deep red, remaining fins yellowish.

S. violaceum: lateral line scales 35 to 37; body dark reddish violet with a rim of silvery white posteriorly on each scale.

S. tiera: lateral line scales 47 to 52; body deep red with a longitudinal band of iridescent blue following scale rows in life; spinous portion of dorsal fin red, with median row of whitish spots, the membranes tipped with white.

Neoniphon species. last dorsal spine longer than preceding one and close to soft part of dorsal fin.

Other Holocentridae: no sharp spine at angle of preopercle.

SIZE:

Maximum: 24 cm; common to 18 cm.

GEOGRAPHICAL DISTRIBUTION AND BEHAVIOUR:

Red Sea to southern Mozambique and perhaps Madagascar. Elsewhere, widespread in the Indo-Pacific

A reef species which may be locally abundant; one of the 2 most common squirrelfishes in the Red Sea.

PRESENT FISHING GROUNDS:

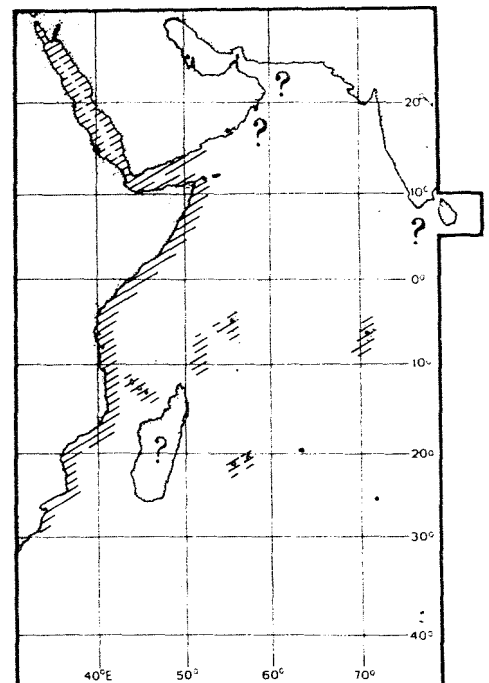
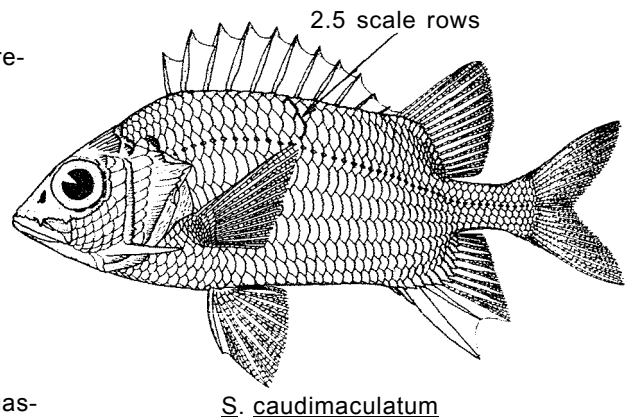
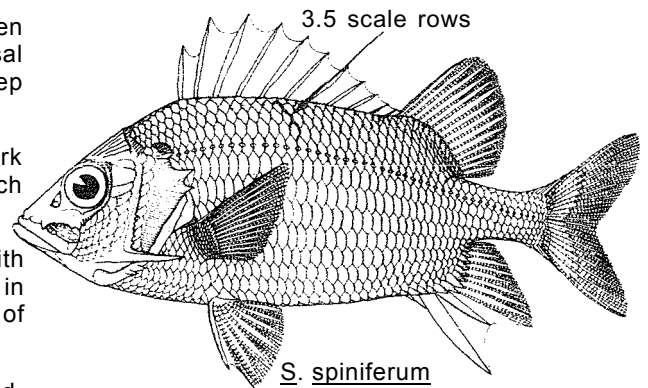
No special fishing areas.

CATCHES, FISHING GEAR AND FORMS OF UTILIZATION:

Separate statistics are not reported for this species.

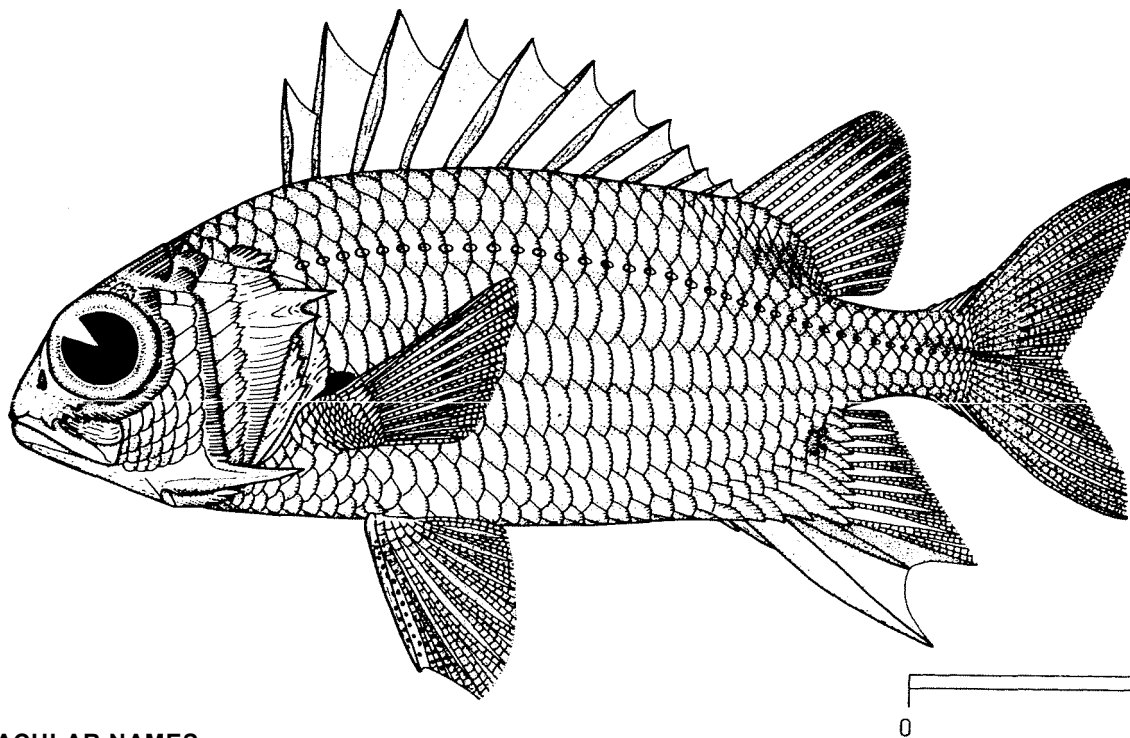
Caught by hook and line and in traps.

Marketed fresh.



FAO SPECIES IDENTIFICATION SHEETS

FAMILY: HOLOCENTRIDAE

FISHING AREA 51
(W. Indian Ocean)Sargocentron praslin (Lacepède, 1802)OTHER SCIENTIFIC NAMES STILL IN USE: Holocentrus ruber (misidentification)
Adioryx ruber (misidentification)

VERNACULAR NAMES:

FAO : En - Brownsport squirrelfish
Fr - Marignan chocolat
Sp - Candil chocolate

NATIONAL:

DISTINCTIVE CHARACTERS:

Body deep, 2.5 to 2.9 times in standard length. Dorsal profile of head convex; preopercular spine about 3/4 eye diameter; first suborbital bone with 1 or 2 short lateral spines near upper margin. Nasal fossa without spinules. Dorsal fin with 11 spines (the last spine shortest) and 13 or 14 (usually 13) soft fin rays; anal fin with 4 spines and 9 soft fin rays; pectoral fin rays 13 to 15 (usually 14). Lateral line scales 33 to 36; scale rows above lateral line to middle of spinous portion of dorsal fin 2.5; cheek with 4 diagonal rows of scales.

Colour: body with alternate stripes of silvery white and reddish brown; a triangular streak of brownish red on cheek, from eye to corner of preopercle; often a concentration of pigment forming an elongate brown spot beneath soft portion of dorsal fin and a roundish blotch above base of soft portion of anal fin; spinous portion of dorsal fin red with a median band of cojoined whitish spots, the membranes tipped with white; a large dark brown spot in axil of pectoral; front edge of pelvic fins dark.

DISTINGUISHING CHARACTERS OF SIMILAR SPECIES OCCURRING IN THE AREA :

Sargocentron rubrum: cheek with 5 diagonal rows of scales (4 in S. praslin); also, no dark brown spot at pectoral axil; dark area of pelvic fins around tips of 2nd to 4th fin rays.

S. melanospilos: nasal fossa with 2 or more spinules on posterior margin; no spine on 1st suborbital bone; a blackish blotch at base of caudal as well as dorsal and anal fins.

S. microstoma: body slender, depth 3.1 to 3.5 times in standard length; also, lateral line scales 49 to 56 (33 to 36 in S. praslin).

S. seychellensis: tips of spinous dorsal fin membranes yellow in life (red with white tips in S. praslin); upper jaw 40 to 45% in head length (37 to 42% in S. praslin); longest dorsal spine 46 to 54% in head length (42 to 50% in S. praslin); slightly more lateral line scales (33 to 39).

Other Sargocentron species: colour different or spinules in nasal fossa or more lateral line scales.

Neoniphon species: last dorsal spine longer than preceding one and close to soft part of dorsal fin.

Other Holocentridae: no sharp spine at angle of preoperculum.

SIZE:

Maximum: 32 cm; common to 20 cm.

GEOGRAPHICAL DISTRIBUTION AND BEHAVIOUR:

East coast of Africa, but perhaps throughout the area; also, widespread in the Indo-Pacific eastward to French Polynesia. Exact distribution uncertain since hitherto confused with S. rubrum.

A shallow-water species, more often found in a coral reef environment than the closely related S. rubrum.

PRESENT FISHING GROUNDS:

No special fishing areas.

CATCHES, FISHING GEAR AND FORMS OF UTILIZATION:

Separate statistics are not reported for this species.

Caught by hook and line and in traps.

Marketed fresh.

