



Anampses caeruleopunctatus ♀ 163 mm S.L.
Marcus Is.



Anampses caeruleopunctatus ♂ 203 mm S.L.
Red Sea



Bodianus bilunulatus 188 mm S.L.
Mauritius



Bodianus macrourus 173 mm S.L.
Mauritius



Bodianus perditio 250 mm S.L.
Mangareva, Gambier Is.



Cheilinus abudjubbe 218 mm S.L.
Red Sea



Cheilinus chlorurus 147 mm S.L.
Kendrew Is., Australia



Cheilinus diagramma ♂ 217 mm S.L.
Tutuila, Samoa



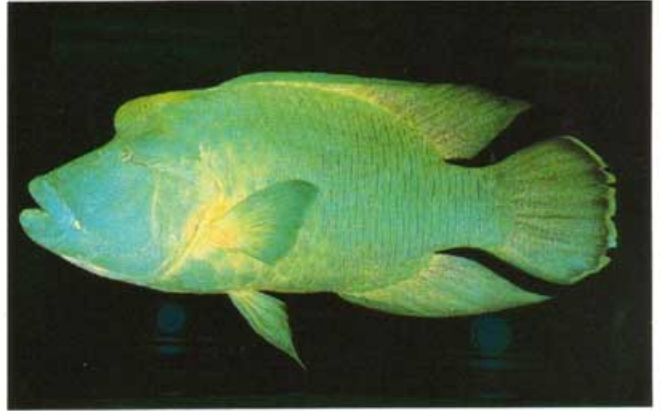
Cheilinus fasciatus 150 mm S.L.
Red Sea



Cheilinus lunulatus 258 mm S.L.
Red Sea



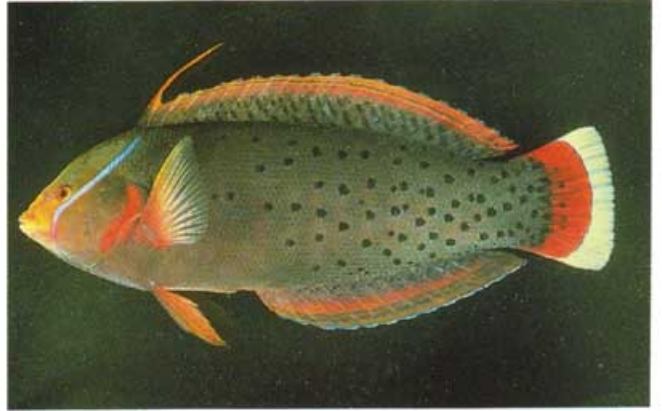
Cheilinus trilobatus 205 mm S.L.
Palmyra Is., E.C. Pacific



Cheilinus undulatus 915 mm S.L.
Eniwetok, Marshall Is.



Cheilio inermis ♀ 206 mm S.L.
Philippines



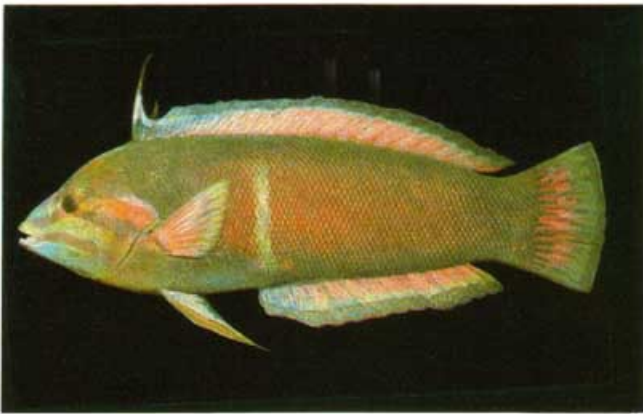
Coris formosa ♀ 225 mm S.L.
Sri Lanka



Coris aygula 115 mm S.L.
Marcus Is.



Coris aygula 465 mm S.L.
Marcus Is.



Coris gaymard africana 280 mm S.L.
Mauritius Is.



Gomphosus caeruleus 132 mm S.L.
Red Sea



Halichoeres hortulanus 158 mm S.L.
Mauritius Is.



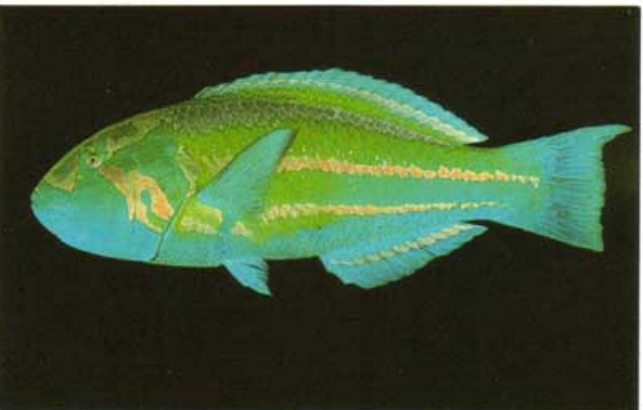
Thalassoma fuscum I.P. 153 mm S.L.
Pitcairn Is.



Thalassoma fuscum T.P. 162 mm S.L.
Johnston Is.



Thalassoma purpureum ♀ 150 mm S.L.
Eniwetok, Marshall Is.



Thalassoma purpureum 310 mm S.L.
Marcus Is.



Xyrichtys bimaculatus 123 mm S.L.
Bahrain

I.P. = initial phase, T.P. = terminal phase

Photographs by J.E. Randall. B. Bishop Museum, Honolulu, Hawaii, USA