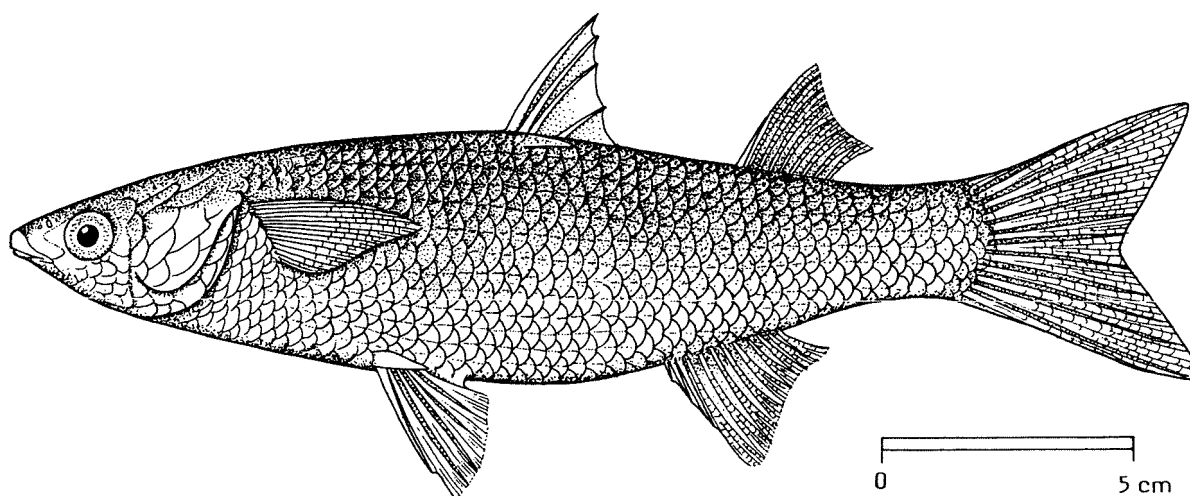


FAO SPECIES IDENTIFICATION SHEETS

FAMILY: MUGILIDAE

FISHING AREA 51
(W. Indian Ocean)*Myxus capensis* (Valenciennes, 1836)OTHER SCIENTIFIC NAMES STILL IN USE : *Trachystoma euronotus* (Smith, 1849)

VERNACULAR NAMES:

FAO : En - Cape mullet
 Fr - Mulet du Cap
 Sp - Lisa del Cabo

NATIONAL:

DISTINCTIVE CHARACTERS:

Body robust, head wide, dorsally flattened. Head length 24.5 to 25% of standard length; no fatty (adipose) tissue around eye; lips thin, lower lip with a wide and high symphysial knob; hind end of upper jaw reaching vertical between posterior nostril and anterior rim of eye; jaw end just below the line of gape; labial teeth unicuspid, in a single row in each lip; teeth present on vomer and palatines (roof of mouth), preorbital bone massive, filling the space between lip and eye, unnotched. First dorsal fin origin nearer to caudal fin base than to snout tip; second dorsal fin origin on vertical through end of anterior fifth of anal fin base; pectoral axillary scale rudimentary; pectoral fin length 69 to 73% of head length; anal fin with 3 spines and 9 soft rays; second dorsal and anal fins moderately scaled (scales between rays). Scales in lateral series 43 to 45; transverse scales 13.

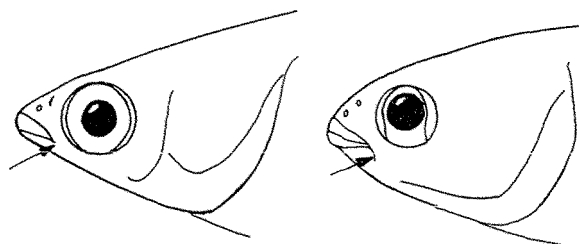
Colour: dark brown on back, dull silvery below.

DISTINGUISHING CHARACTERS OF SIMILAR SPECIES OCCURRING IN THE AREA:

Liza and Valamugil species: jaw end well below line of gape; no teeth on vomer and palatines (roof of mouth); maxilla usually visible below mouth corner.

Agonostomus species: lips thick; inter-orbital space convex; 2 anal fin spines (3 in Myxus capensis).

Other species of Mugilidae: pectoral axillary scale long.



Myxus capensis

Liza Valamugil

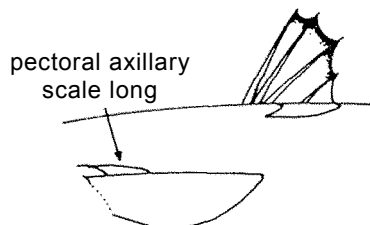
SIZE:

Maximum: 35 cm; common to 25 cm.

GEOGRAPHICAL DISTRIBUTION AND BEHAVIOUR:

In the area, known to occur in South Africa up to St. Lucia Bay (Zululand).

Enters freshwaters; known to jump out of the water.



Other species of Mugilidae

PRESENT FISHING GROUNDS:

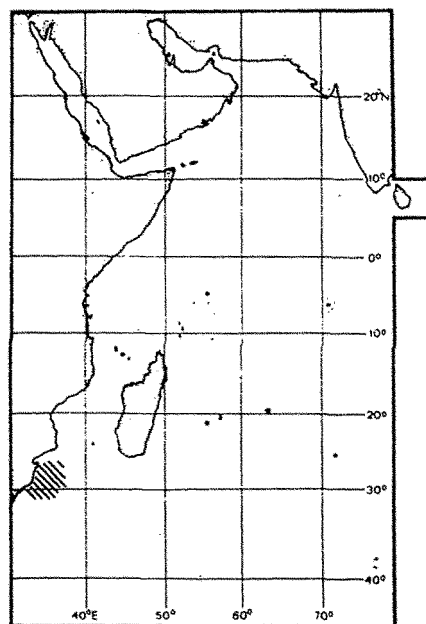
Coastal waters and the adjacent freshwaters.

CATCHES, FISHING GEAR AND FORMS OF UTILIZATION:

Separate statistics are not reported for this species.

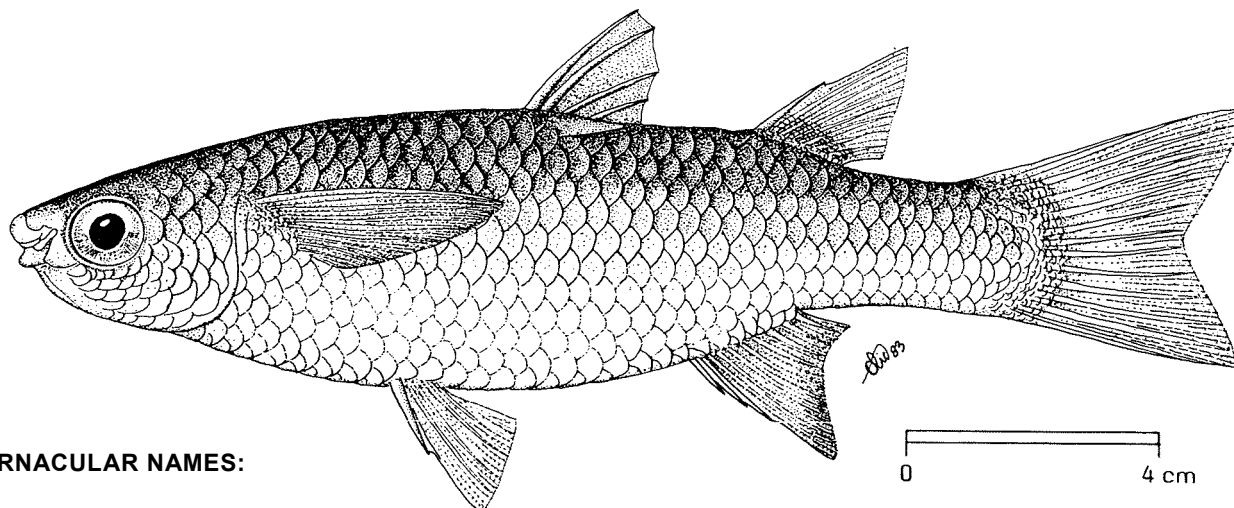
Caught with gillnets, castnets and beach seines.

Marketed fresh.



FAO SPECIES IDENTIFICATION SHEETS

FAMILY: MUGILIDAE

FISHING AREA 51
(W. Indian Ocean)*Oedalechilus labiosus* (Valenciennes, 1836)OTHER SCIENTIFIC NAMES STILL IN USE: *Liza joloensis* (Seale, 1909)

VERNACULAR NAMES:

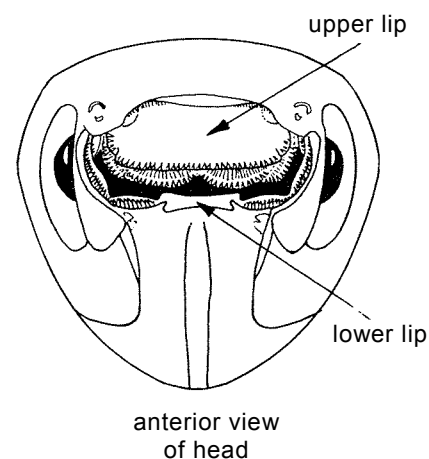
FAO: En – Hornlip mullet
Fr – Mulet labéon
Sp – Lisa morruda

NATIONAL:

DISTINCTIVE CHARACTERS:

Body moderately robust; head wide, dorsally flattened. Head length 22 to 24% of standard length; fatty (adipose) tissue a rim around eye; lips thick, the upper with a row of papillae which develop in larger fish into a horny fringe, lower lip turned down, with a crenulated horny edge and a low double symphyseal knob; hind end of upper jaw reaching a vertical between the posterior nostril and the anterior rim of eye; lips toothless, but teeth present on roof of mouth; preorbital bone wide, filling the space between lip and eye, deeply notched anteriorly. First dorsal fin origin nearer to caudal fin base than to snout tip; second dorsal fin origin at vertical through posterior quarter of anal fin base; pectoral axillary scale moderately long (24.5 to 25% of the pectoral fin length); pectoral fin 100 to 112% of the head length; anal fin with 3 spines and 9 soft rays; second dorsal and anal fins densely scaled. Scales in lateral series 34 to 36.

Colour: dusky grey above, white on belly; a dark spot on pectoral fin base.

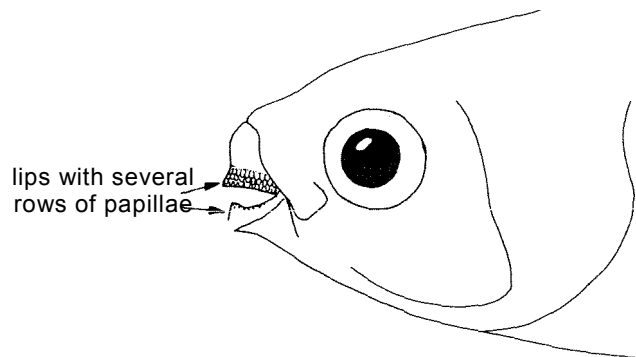


DISTINGUISHING CHARACTERS OF SIMILAR SPECIES OCCURRING IN THE AREA:

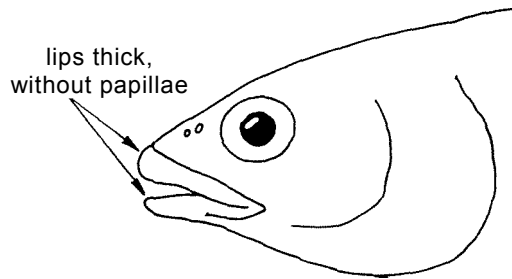
Crenimugil crenilabis: lips with several rows of papillae (no horny projection); preorbital bone without anterior notch; lateral line scales 38 to 40 (34 to 36 in Q. labiosus).

Agonostomus species: lips thick, without any ornamentation; interorbital space convex; 2 anal fin spines (3 in Q. labiosus).

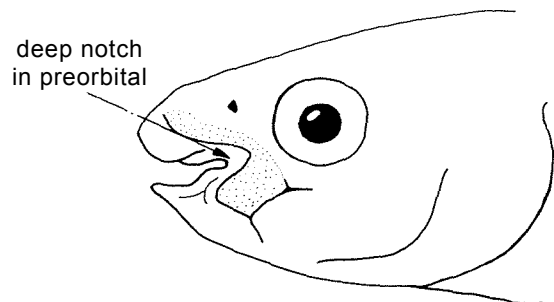
All other species of Mugilidae have no ornamentation on lips.



Crenimugil crenilabis



Agonostomus species



Oedlechilus labiosus

SIZE:

Maximum: 40 cm; common to 20 cm.

GEOGRAPHICAL DISTRIBUTION AND BEHAVIOUR:

In the area, recorded from the Red Sea, the Aldabra, Set chelles and Laccadive Islands and from Sri Lanka. Elsewhere, from the Andaman Islands to Indonesia, Australia and Marshall and Mariana Islands.

Occurring in coastal waters, mainly in coral reef areas.

PRESENT FISHING GROUNDS:

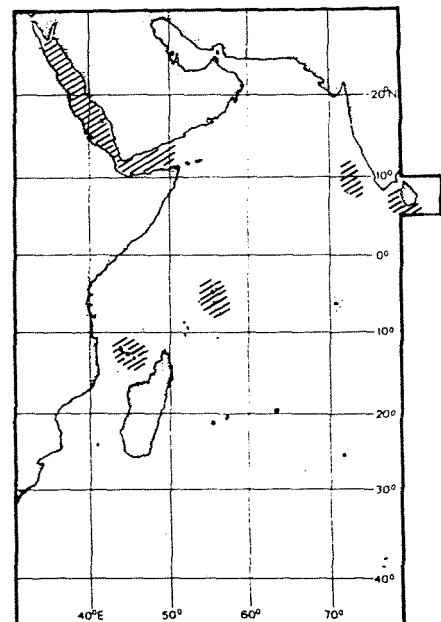
Mainly coral reef areas.

CATCHES, FISHING GEAR AND FORMS OF UTILIZATION:

Separate statistics are not reported for this species.

Caught with gillnets, liftnets and seines.

Used as live bait in pole and line tuna fishing.

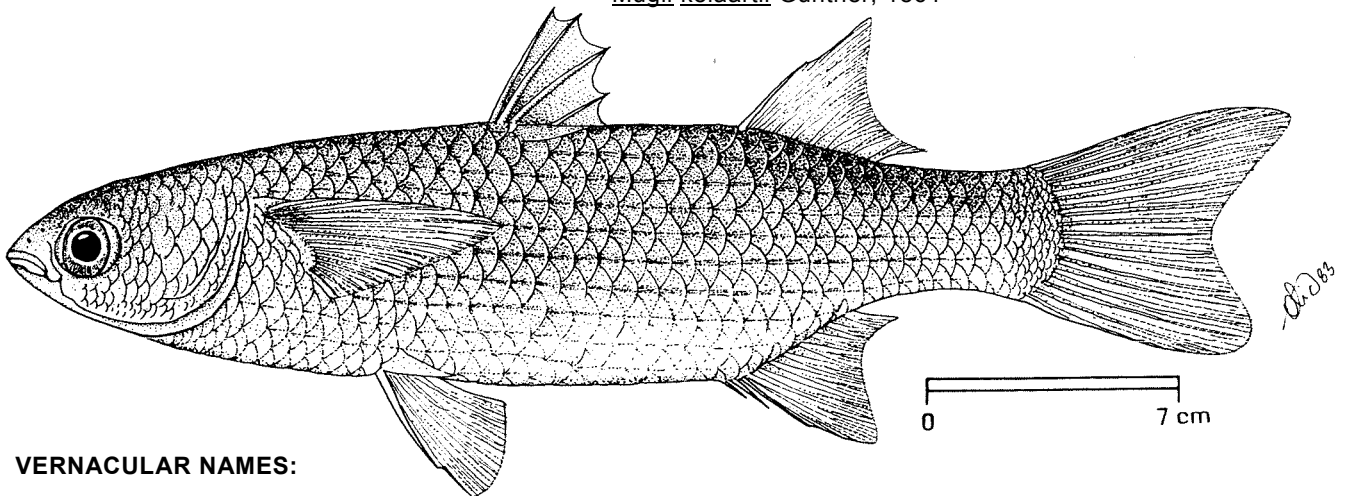


FAO SPECIES IDENTIFICATION SHEETS

FAMILY: MUGILIDAE

FISHING AREA 51
(W. Indian Ocean)Valamugil cunnesius (Valenciennes, 1836)

OTHER SCIENTIFIC NAMES STILL IN USE:

Mugil amarulus Valenciennes, 1836Mugil strongylocephalus Richardson, 1846Mugil ophuysenii Bleeker, 1859Mugil longimanus Günther, 1861Mugil kelaartii Günther, 1861

VERNACULAR NAMES:

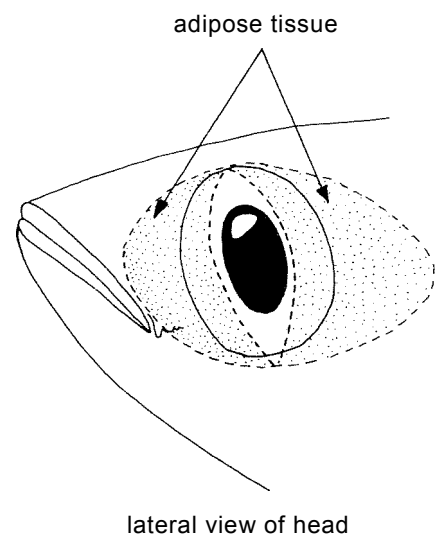
FAO : En - Longarm mullet (=Longfin grey mullet, Fishing Areas 57/71)
Fr - Mulet longue aile
Sp - Lisa de aleta larga

NATIONAL:

DISTINCTIVE CHARACTERS:

Body moderately robust, head wide, flattened above. Head length 24 to 29% of standard length; fatty (adipose) tissue covering most of iris; lips thin, lower lip with a high symphyseal knob; hind end of upper jaw on vertical from anterior rim of eye; teeth labial, short and scattered in upper lip, long, ciliate and spaced in lower lip; preorbital bone wide, filling the space between lip and eye, notched anteriorly but filling with age. First dorsal fin origin nearer to snout tip than to caudal fin base; second dorsal fin origin on vertical through end of anterior third of anal fin base; pectoral axillary scale long (40 to 46% of pectoral fin length); pectoral fins 96 to 100% of head length, reaching to vertical between 3rd and 4th spines of first dorsal fin; anal fin with 3 spines and 9 soft rays; second dorsal and anal fins moderately scaled. Scales in lateral series 30 to 35; 7 rows of scales at side of caudal peduncle.

Colour: yellow-brown to dark grey on back, silvery below; a dark axillary spot on pectoral fin base.



DISTINGUISHING CHARACTERS OF SIMILAR SPECIES OCCURRING IN THE AREA:

Valamugil speigleri: scales in lateral series 37 to 40 (30 to 35 in V. cunnesius).

V. engeii: first dorsal fin origin nearer to caudal fin base than to snout tip.

V. robustus: pectoral fin not reaching vertical through first dorsal fin origin.

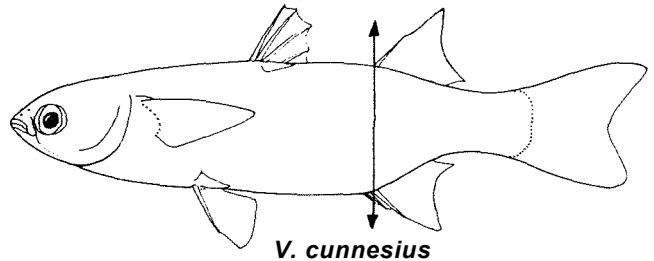
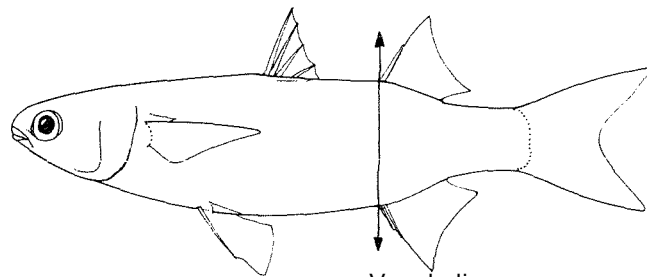
V. seheli and V. buchani: second dorsal fin origin at vertical through anal fin origin; adipose tissue only a rim around eye.

Myxus capensis and Liza species: pectoral axillary scale rudimentary or absent.

Mugil cephalus: 8 anal fin rays (9 in Valamugil species).

Crenimugil crenilabis and Oedalechilus labi- osus: lip ornamentation present.

Agonostomus species: lips thick; interorbital space convex; 2 anal fin spines (3 in Valamugil species).



SIZE:

Maximum: 41 cm; common to 25 cm.

GEOGRAPHICAL DISTRIBUTION AND BEHAVIOUR:

In the area, from Natal (South Africa) to the Red Sea, including Madagascar and eastward to the west coast of India and Sri Lanka. Elsewhere, from the east coast of India, to Malaya, Indonesia and the western Pacific.

A schooling species, occurring in shallow coastal waters, estuaries and backwaters, frequently entering freshwater. Forms larger aggregations during spawning which takes place at sea. Young individuals enter tidal rivers.

Feeds on small algae, diatoms and other organic matter, both living and detrital, taken in with sand and mud.

PRESENT FISHING GROUNDS:

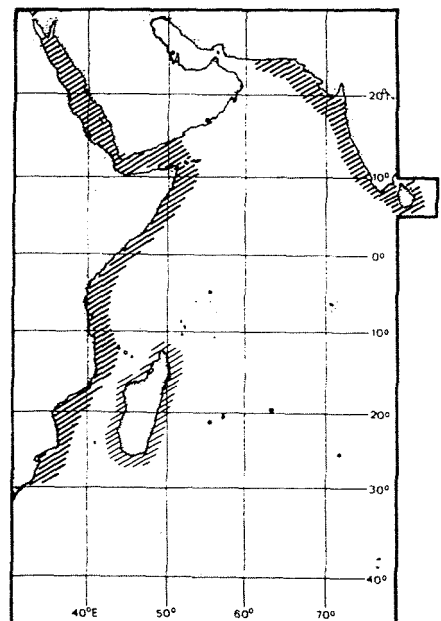
Apparently caught throughout its range. This is a common species of mullet in the Vembanad Lake (Kerala, India) and the adjacent coast. Small-sized fish occur in lagoons connected to the sea, soon after heavy rains.

CATCHES, FISHING GEAR AND FORMS OF UTILIZATION:

Separate statistics are not reported for this species.

Caught especially with gillnets, castnets, stakenets or barrier nets, liftnets, beach seines, pouch nets and trawls.

Marketed fresh.



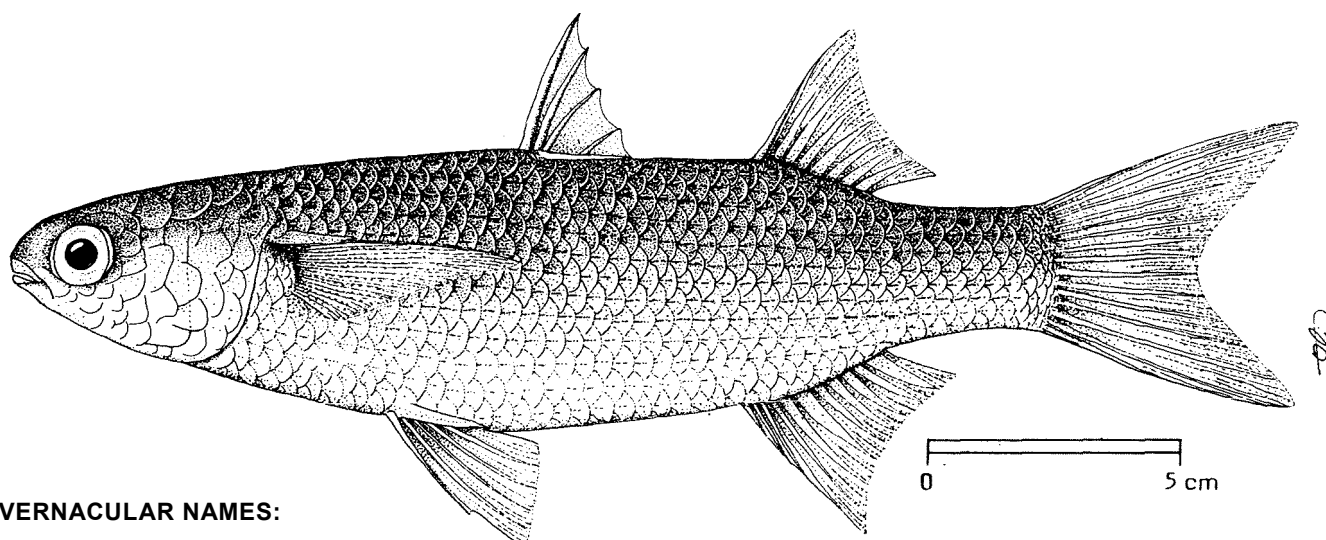
FAO SPECIES IDENTIFICATION SHEETS

FAMILY: MUGILIDAE

FISHING AREA 51
(W. Indian Ocean)

<i>Valamugil seheli</i> (Forsskål, 1775)
--

OTHER SCIENTIFIC NAMES STILL IN USE :

Mugil axillaris Valenciennes, 1836*Mugil caeruleomaculatus* Lacépède, 1803

VERNACULAR NAMES:

FAO : En - Blue-spot mullet
 Fr - Mulet à tache bleue
 Sp - Lisa de mancha azul

NATIONAL:

DISTINCTIVE CHARACTERS:

Body moderately robust; head wide, dorsally flattened. Head length 25 to 28% of standard length; fatty (adipose) tissue a rim around eye; lips thin, lower lip with a high, double symphyseal knob; hind end of upper jaw reaching the vertical between posterior nostril and anterior rim of eye; teeth labial, fine and well spaced in both lips, sparser in the upper; preorbital bone wide, filling the space between lip and eye, slightly notched anteriorly, filling with age. First dorsal fin origin nearer to snout tip than to caudal fin base or equidistant; second dorsal fin origin on vertical from anal fin origin; pectoral axillary scale long (38 or 39% of pectoral fin length), pectoral fin 84.5 to 95% of head length reaching vertical from first dorsal fin origin; scales in lateral series 38 to 42; anal fin with 3 spines and 9 soft rays. Second dorsal and anal fins densely scaled; 9 rows of scales on side of caudal peduncle.

Colour: greenish-brown on back, silvery below; upper rows of scales with dusky spots forming indistinct bands along body; second dorsal and caudal fins pale blue; pelvic, anal and first dorsal fins white, pectoral fin dull yellow with a blue axillary spot; upper lobe of caudal fin with a dark blue tip.

DISTINGUISHING CHARACTERS OF SIMILAR SPECIES OCCURRING IN THE AREA:

Valamugil robustus: pectoral fin not reaching the vertical from first dorsal fin origin.

V. speigleri: adipose eyelid well over iris; only 7 rows of scales on side of caudal peduncle (9 in V. seheli).

Other Valamugil species: less than 37 scales in lateral series (38 to 42 in V. seheli).

Myxus capensis and Liza species: pectoral axillary scale rudimentary or absent.

Mugil cephalus: 8 anal fin rays (9 in V. seheli).

Crenimugil crenilabis and Oedalechilus labi-
osus: lip ornamentation present.

Agonostomus species: lips thick, interorbital space convex; 2 anal fin spines (3 in V. seheli).

SIZE:

Maximum: 50 cm; common to 24 cm.

GEOGRAPHICAL DISTRIBUTION AND BEHAVIOUR:

In the area, found from Natal (South Africa) to the Red Sea including Madagascar, Mauritius, Réunion, Barbonia, and Seychelles islands, eastward extending to India and Sri Lanka. Elsewhere, along the eastern coast of India up to Chilka Lake and the Andaman Islands, eastward to the Western Pacific including Hawaii, Marshall Islands, New Guinea and Australia; also in the South China Sea up to Hong Kong and Canton.

A schooling species, entering brackish waters and freshwaters. Forms larger aggregations during spawning which takes place at sea.

Feeds on small algae, diatoms and other organic matter, both living and detrital, taken in with sand and mud.

PRESENT FISHING GROUNDS:

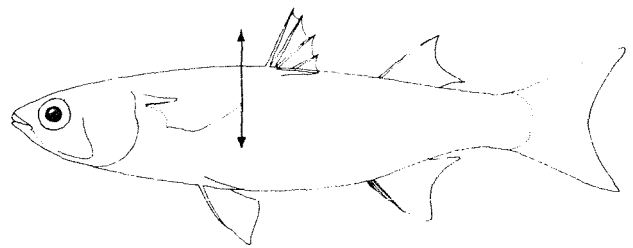
Caught throughout its range. Youngs occur in lagoons adjoining the sea coast, soon after heavy rains.

CATCHES, FISHING GEAR AND FORMS OF UTILIZATION:

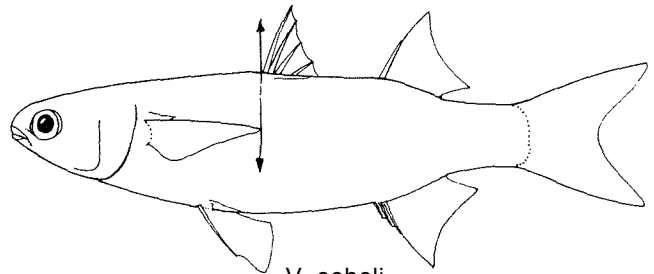
Separate statistics are not reported for this species.

Caught mainly with gillnets, castnets, stakenets or barrier nets, liftnets, beach seines; pouch nets are especially adopted to catch mullet during the spawning run.

Marketed fresh.



V. robustus



V. seheli

