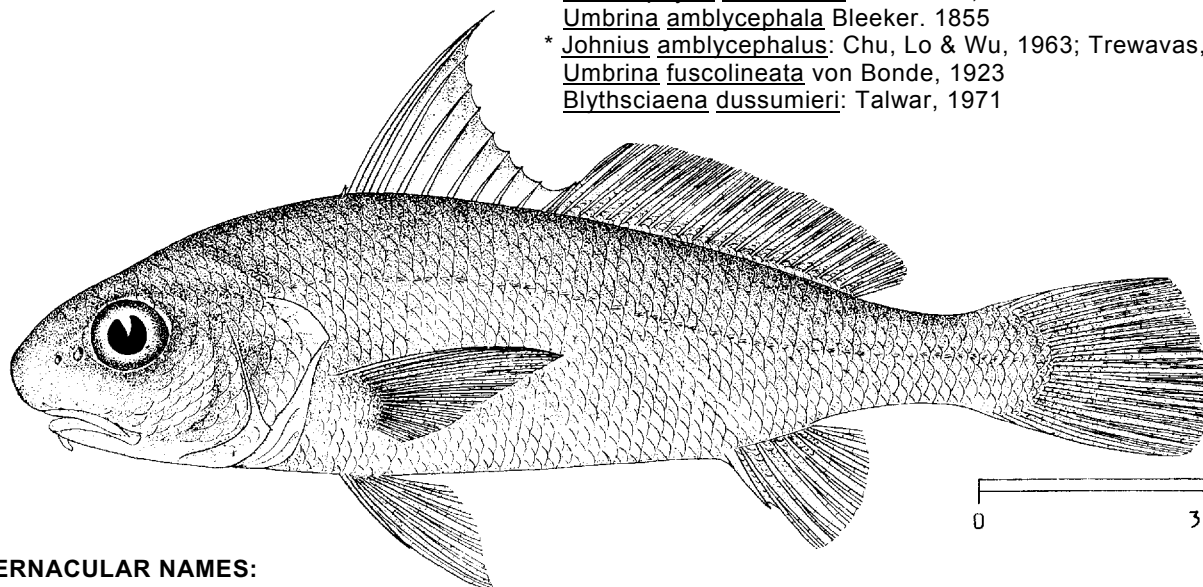


FAO SPECIES IDENTIFICATION SHEETS

FAMILY: SCIAENIDAE

FISHING AREA 51
(W. Indian Ocean)Johnius dussumieri (Valenciennes, 1833)

OTHER SCIENTIFIC NAMES STILL IN USE:

Umbrina dussumieri Valenciennes, 1833Sciaena dussumieri Bleeker, 1872; Fowler, 1933; Weber & de Beaufort, 1936; Lin, 1938Dendrophysa dussumieri: Trewavas, 1964Umbrina amblycephala Bleeker, 1855* Johnius amblycephalus: Chu, Lo & Wu, 1963; Trewavas, 1977Umbrina fuscolineata von Bonde, 1923Blythsciaena dussumieri: Talwar, 1971

VERNACULAR NAMES:

FAO : En - Bearded croaker
Fr - Courbine barbiche
Sp - Corvina de barba

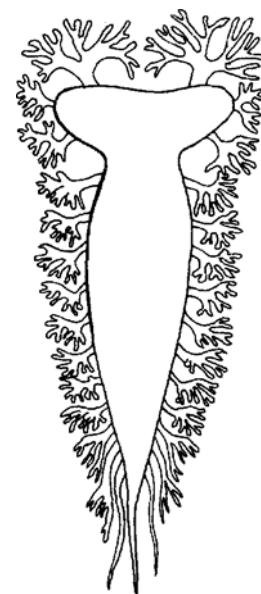
NATIONAL:

DISTINCTIVE CHARACTERS:

A medium-sized species with a rounded projecting snout. Mouth inferior; a blunt barbel on chin; rostral pores 5, marginal pores 5, dividing the snout into deep lobes; mental pores 5; teeth differentiated into large and small in upper jaw only, the large ones close-set, not canine-like and forming the outer series; teeth in lower jaw uniform; sagitta (large earstone) with a tadpole-shaped impression, of which the "head" is obliquely truncate and the "tail" is deepened as a hollow cone; gill-rakers short, 6 to 9 on lower limb of first arch, the anterior minute, Dorsal fin with 10 spines, the second and third spines elongate, followed by a deep notch, second part of fin with 1 spine and 23 to 26 soft rays, pectoral fins moderately long, about 3/4 of head length; anal fin with 2 spines and 7 soft rays. the second spine weak; caudal fin rhomboid, Scales on body cycloid (smooth); lateral line scales reaching to tip of caudal fin. Swim-bladder hammer-shaped, with 14 or 15 pairs of appendages, all except one or two posterior arborescent, the first branching in the head.



sagitta (inner surface)



swimbladder

*The name Johnius dussumieri (Valenciennes, 1833) can be used if Johnius and Johnieops are kept distinct genera; if they are combined, then dussumieri of Valenciennes is a junior homonym of Johnieops dussumieri (Cuvier, 1830), a quite different species, and so must be replaced by the next available name, Johnius amblycephalus (Bleeker, 1855)

Colour: body black. upper part of the rather high spinous part of dorsal fin black: no other distinctive markings.

DISTINGUISHING CHARACTERS OF SIMILAR SPECIES OCCURRING IN THE AREA :

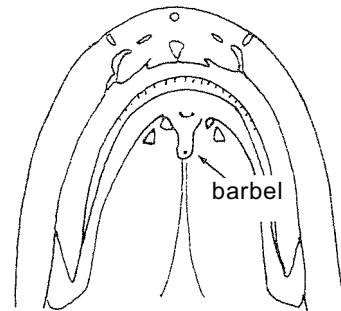
Johnius macropterus: ctenoid (rough to touch) scales present on body, gillrakers 10 to 12 (6 to 9 in J. dussumieri): soft dorsal fin rays 27 to 32 (24 to 26 in J. dussumieri)

Other Johnius and Johnieops species: no barbel on chin.

Dendrophysa russelli: also with a barbel on chin, but the swimbladder is carrot-shaped (hammer-shaped in J. dussumieri): also, more soft dorsal fin rays 27 or 28 in D. russelli.

Nibea albida: two barbels on chin: also. swimbladder carrot-shaped.

Umbrina canariensis: a pore lies at tip of barbel; also, no appendages on swimbladder.



underside of head

Umbrina sp.

SIZE:

Maximum: 25 cm: common to 15 cm.

GEOGRAPHICAL DISTRIBUTION AND BEHAVIOUR:

Abundant throughout most of the Indo-West Pacific. westward to East Africa.

Inhabits coastal waters. down to 40 m depth.

Feeds on small fishes and invertebrates.

PRESENT FISHING GROUNDS:

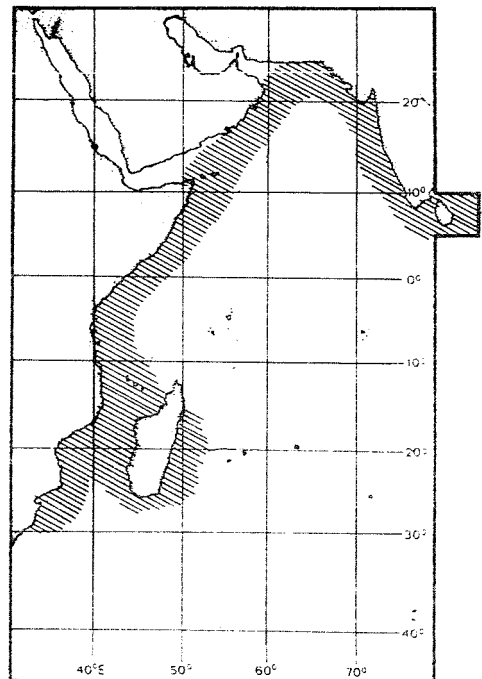
Coastal waters throughout its range.

CATCHES, FISHING GEAR AND FORMS OF UTILIZATION:

Separate statistics are not recorded for this species within the area.

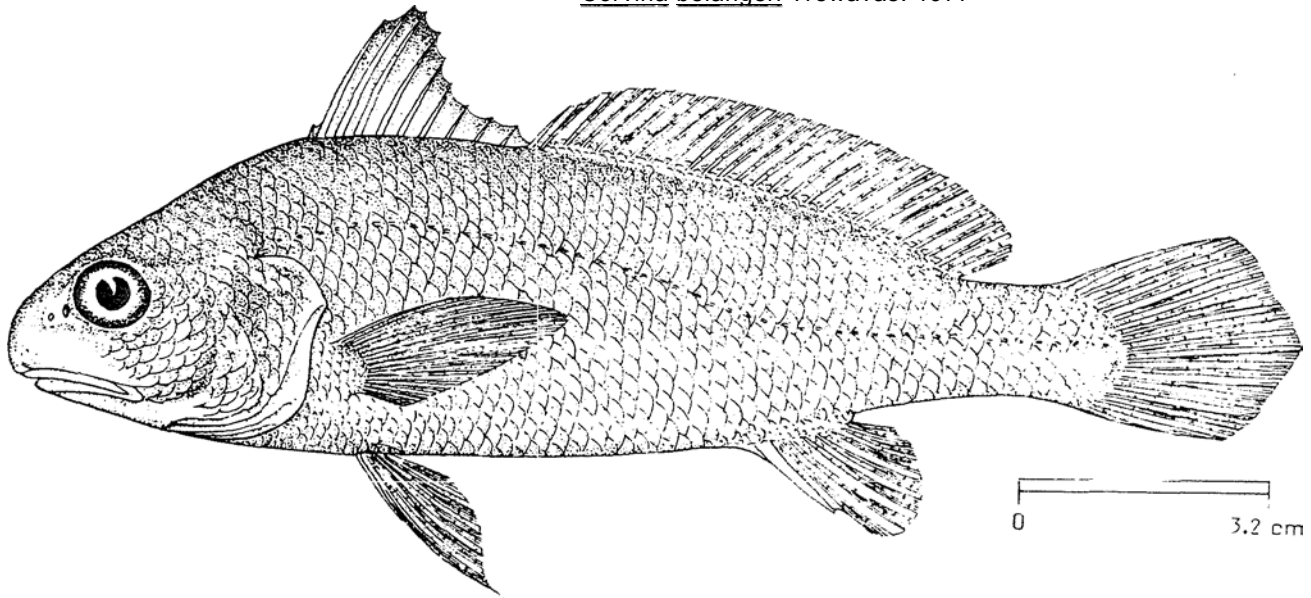
Caught with bottoms trawls and boat seines.

Marketed fresh. also dried-salted.



FAO SPECIES IDENTIFICATION SHEETS

FAMILY: SCIAENIDAE

FISHING AREA 51
(W. Indian Ocean)Johnius carouna (Cuvier. 1830)OTHER SCIENTIFIC NAMES STILL IN USE : Corvina carutte Day. 1878
Corvina belangeri Trewavas. 1977

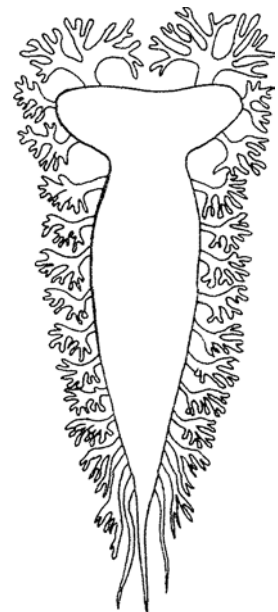
VERNACULAR NAMES:

FAO : En - Caroun croaker
Fr - Courbine caroune
Sp - Corvina caruna

NATIONAL:

DISTINCTIVE CHARACTERS:

A small-sized species with a rounded snout. Mouth horizontal and inferior: no barbel on chin; rostral pores 5; marginal pores 5. mental pores in 3 pairs of which the first open close behind the symphysis in a common pit; teeth differentiated into large and small in upper jaw only. the large ones close-set, forming the outer series; lower jaw with a uniform band of villiform teeth; sagitta (large earstone) with a tadpole-shaped impression. of which the "head" has its long axis lying obliquely to that of the otolith and the "tail" is expanded and deepened as a hollow cone connected with the head by a narrow groove; gillrakers short, 9 to 12 on lower limb of first arch. Dorsal fin with 10 or 11 spines followed by a deep notch, second part of the fin with 1 short spine and 26 to 29 soft rays; pectoral fins moderately long, 3/4 of head length; anal fin with 2 spines and 7 soft rays. the second spine strong, about 1/3 of head length; caudal fin rhomboid. Scales on snout cycloid (smooth). other parts of head and body with ctenoid (rough to touch) scales; small scales present on bases of soft parts of dorsal and anal fins. Lateral line scales extend to tip of caudal fin. Swimbladder hammer-shaped, with 14 or 15 pairs of arborescent appendages, the first entering the head and sending a palmate branch to the front of pectoral arch.

swimbladder of
Johnius sp.

Colour: upper two-thirds of body light grey or with a white sheen. lower third yellowish; pectoral, pelvic, and anal fins and lower part of caudal fin with a yellowish tinge.

DISTINGUISHING CHARACTERS OF SIMILAR SPECIES OCCURRING IN THE AREA :

Johnius dussumieri and J. macropterus: a blunt barbel present on chin. Furthermore, only 23 to 26 dorsal soft rays in J. dussumieri (26 to 29 in J. carouna).

J. carutta: 16 pairs of swimbladder appendages. (14 or 15 in J. Carouna); a white or yellow streak present along lateral line (in fresh specimens).

J. belangerii: second anal fin spine long, about 1/2 of head length (1/3 of head length in J. carouna), spinous part of dorsal fin at least partly black.

J. elongatus: only 6 or 7 lower gillrakers (9 to 12 in J. carouna), 2 small, knob-like tags of thick skin on chin.

J. glaucus: spinous part of dorsal fin stained with black, opercle with a bluish blotch.

Johnieops species: enlarged teeth also present in lower jaw; enlarged teeth of upper jaw widely spaced. Also only 5 to 8 lower gillrakers in J. macrorhynchus.

SIZE:

Maximum: 25 cm: common to 16 cm.

GEOGRAPHICAL DISTRIBUTION AND BEHAVIOUR:

Southwest and southeast coast of India.

Inhabits coastal waters entering estuaries.

Feeds on small crustaceans and other invertebrates.

PRESENT FISHING GROUNDS:

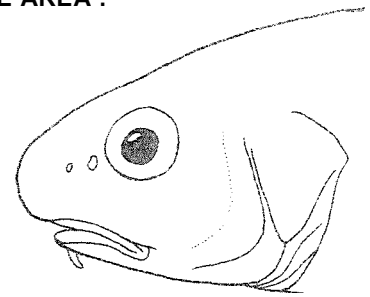
Coastal waters and estuaries.

CATCHES, FISHING GEAR AND FORMS OF UTILIZATION:

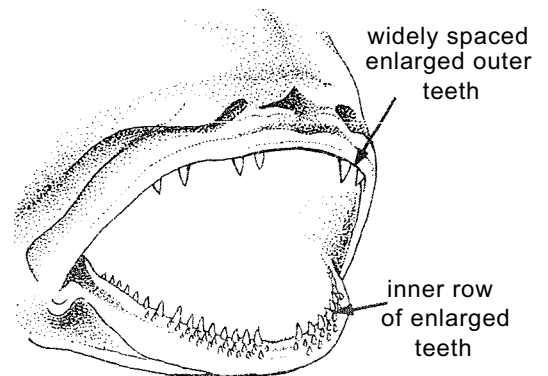
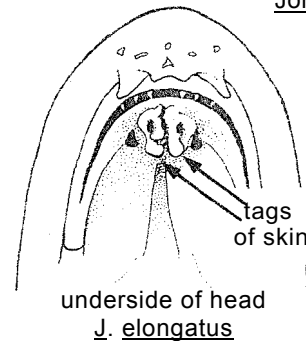
Separate statistics are not available for this species within the area.

Caught with trawls, boat seines and the Chinese dip nets.

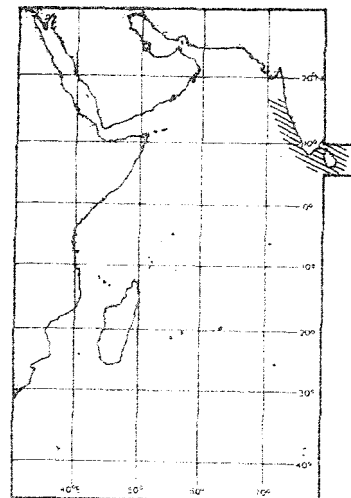
Marketed fresh: also dried and salted.



Johnius dussumieri



Johnieops aneus



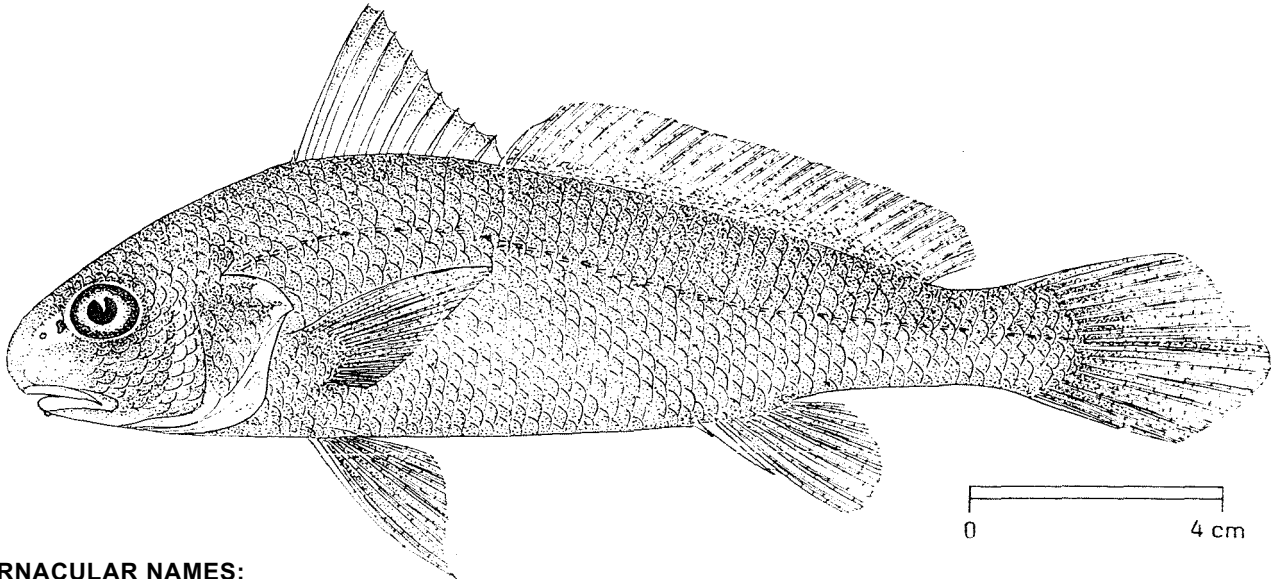
FAO SPECIES IDENTIFICATION SHEETS

FAMILY : SCIAENIDAE

FISHING AREA 51
(W. Indian Ocean)

<i>Johnius elongatus</i> Mohan, 1976

OTHER SCIENTIFIC NAMES STILL IN USE : none



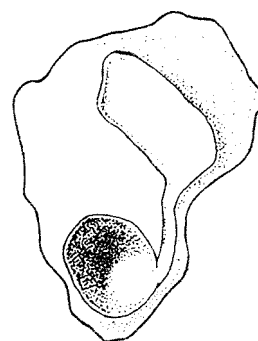
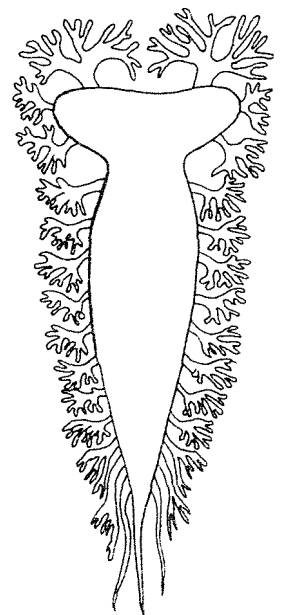
VERNACULAR NAMES:

FAO: En - Spindle croaker
 Fr - Courbine fuseau
 Sp - Corvina ahusada

NATIONAL:

DISTINCTIVE CHARACTERS:

A small, rather slender species with a swollen snout projecting beyond the ventral mouth. No barbel on chin; rostral pores 5, marginal pores 5, the marginal dividing the rostral flap into deep lobes; mental pores 5, surrounded by thickened skin, produced into two short, irregular taps between the median and first lateral pores; teeth differentiated into large and small in upper jaw, those in the outer row close-set and enlarged, but not canine-like; lower jaw teeth uniformly villiform; sagitta (large earstone) with a tadpole-shaped impression, of which the "head" has its long axis lying obliquely to that of the otolith and the "tail" is expanded and deepened as a hollow cone, connected with the "head" by a narrow groove; gillrakers short and narrow, 6 or 7 on lower limb of first arch. Dorsal fin with 10 or 11 spines, followed by a notch, second part of fin with 1 spine and 25 to 29 soft rays; anal fin with 2 weak spines and 7 soft rays, the second spine about 1/3 of head length; caudal fin rhomboid. Scales cycloid (smooth) on snout and below eye, and ctenoid (rough to touch) on top of head and on body; lateral line scales reaching to tip of caudal fin. Swimbladder hammer-shaped, with 13 or 14 pairs of arborescent appendages, the first branching in the head.

sagitta
(inner surface)swimbladder of
Johnius species

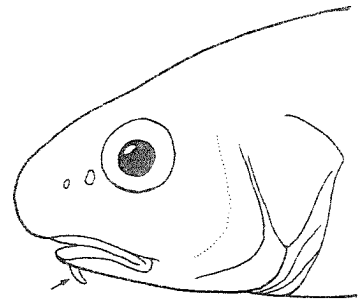
Colour: back grey, flanks and belly silvery, peppered with black on lower flanks and tips of dorsal, anal and caudal fins.

DISTINGUISHING CHARACTERS OF SIMILAR SPECIES OCCURRING IN THE AREA :

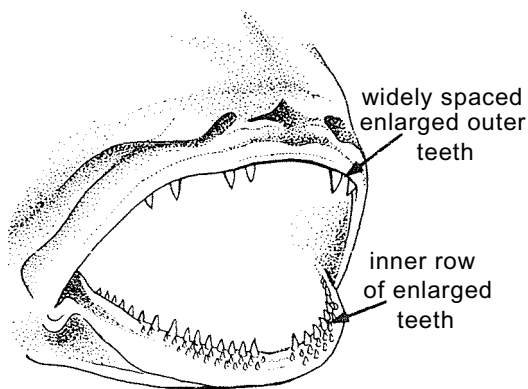
Johnius dussurmieri and J. macropterus: a blunt barbel present on chin; also 8 to 11 lower gillrakers in J. macropterus (6 or 7 in J. elongatus).

Other Johnius species: 8 or more gillrakers on lower limb of first arch and snout less prominent. Also, body deeper in J. glaucus (depth over 29% of standard length; less than 29% in J. elongatus) and no thickened skin produced into tags around mental pores in J. glaucus and J. belangeri.

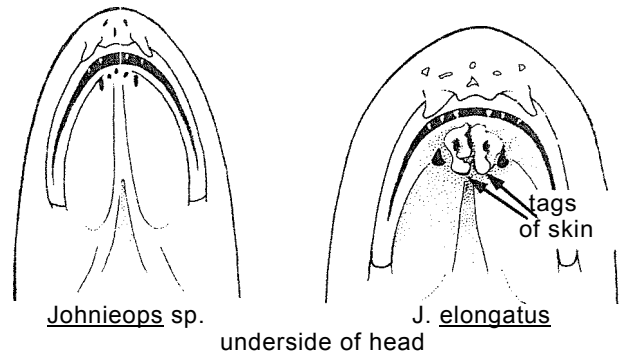
Johnieops species: enlarged teeth also present in lower jaw; enlarged teeth of upper jaw widely spaced. Furthermore, mental pores not surrounded by thickened skin produced into tags.



Johnius dussurmieri



Johnieops aneus



Johnieops sp.

J. elongatus

underside of head

SIZE:

Maximum: 30 cm; common to 20 cm.

GEOGRAPHICAL DISTRIBUTION AND BEHAVIOUR:

West coast of India and Sri Lanka.

Inhabits coastal waters, down to 30 m depth.

Feeds on benthic worms and

PRESENT FISHING GROUNDS:

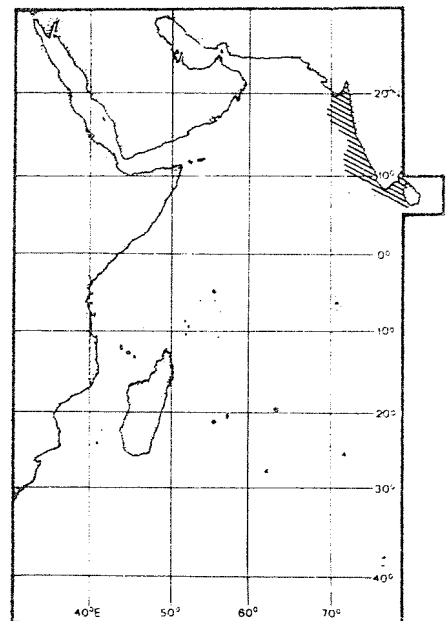
Coastal waters, throughout its range; forms an important constituent of trawl catches along the west coast of India.

CATCHES, FISHING GEAR AND FORMS OF UTILIZATION:

Separate statistics are not reported for this species within the area.

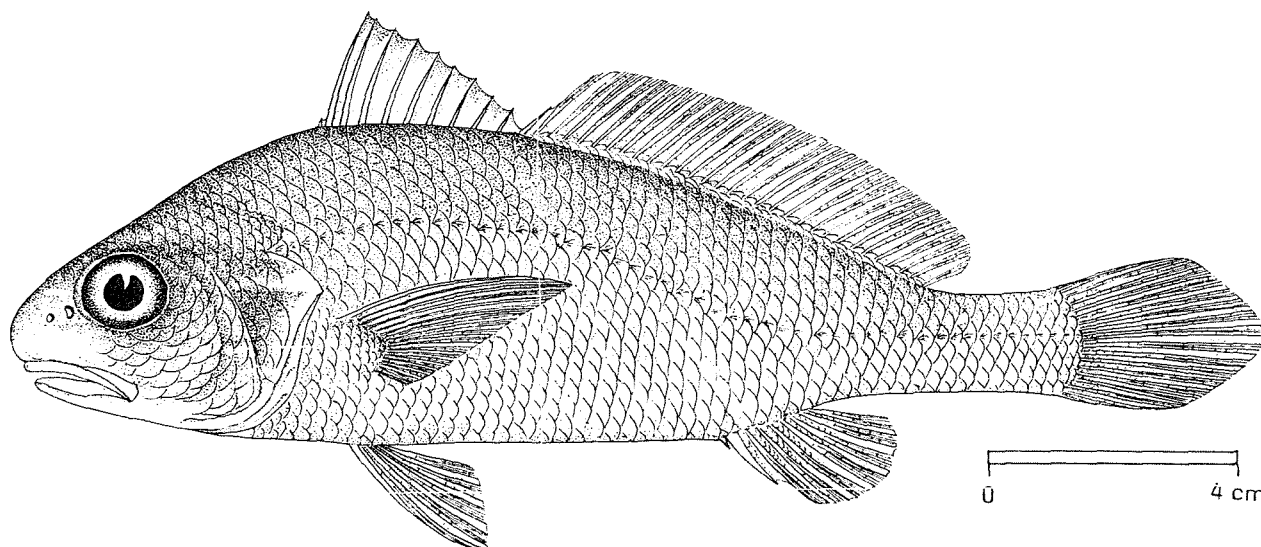
Caught with bottom trawls and boat seines.

Marketed fresh; also dried salted.



FAO SPECIES IDENTIFICATION SHEETS

FAMILY: SCIAENIDAE

FISHING AREA 51
(W. Indian Ocean)*Johnius glaucus* (Day, 1876)OTHER SCIENTIFIC NAMES STILL IN USE : *Sciaena dussumieri* (not Cuv. & Val.):Day, 1865
Sciaena glaucus; Day, 1878

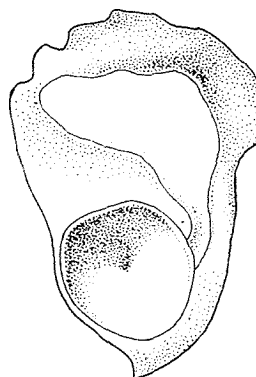
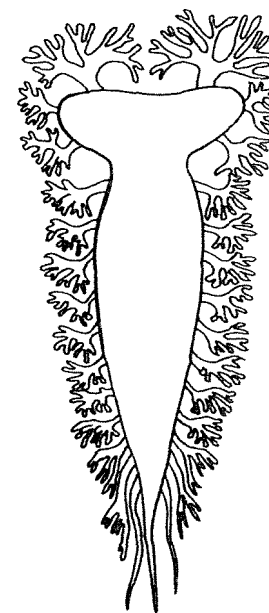
VERNACULAR NAMES:

FAO : En - Pale spotfin croaker
 Fr - Courbine aile tachetée
 Sp - Corvina glauca

NATIONAL:

DISTINCTIVE CHARACTERS:

A medium-sized species with a deep body, its depth about 3 times in standard length. Snout projecting, mouth inferior; no barbel on chin; rostral pores 5, marginal pores 5, lower jaw with 5 mental pores; teeth differentiated in size in upper jaw only, the large teeth close-set and forming the outer row; uniform villiform teeth in lower jaw; sagitta (large earstone) with a tadpole-shaped impression of which the "head" lies obliquely and the "tail" is expanded and deepened as a hollow cone; gillrakers short, with simple curved spines on both sides, 10 to 13 on lower limb of first arch. Dorsal fin with 10 spines, followed by a deep notch, second part of fin with 1 spine and 28 to 30 soft rays; pectoral fins about 3/4 of head length; anal fin with 2 spines and 7 soft rays, the second spine weak, about 1/3 of head length; caudal fin rhomboid; scales on body ctenoid (rough to touch); lateral line scales reaching tip of caudal fin. Swimbladder hammer-shaped, with 14 or 15 pairs of arborescent appendages, the first branching in the head.

sagitta
(inner surface)swimbladder of
Johnius sp.

Colour: body dorsally grey; upper two-thirds of spinous part of dorsal fin black, opercle with a blue blot

DISTINGUISHING CHARACTERS OF SIMILAR SPECIES OCCURRING IN THE AREA:

Johnius macropterus and J. dussumieri: a blunt barbel present on chin. Furthermore, dorsal soft rays 23 to 26 and lower gillrakers 6 to 9 in J. dussumieri (28 to 30 and 10 to 13, respectively, in J. glaucus).

J. carutta: lower gillrakers 8 or 9; 16 pairs of swimbladder appendages (14 or 15 in J. glaucus); a yellow or white streak along lateral line.

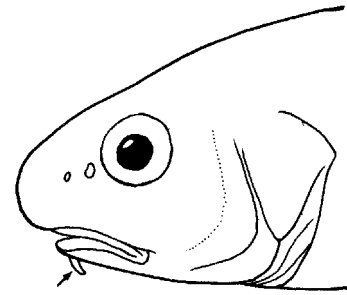
J. carouna: no black on spinous part of dorsal fin; dorsal fin rays usually less, 26 to 29.

J. belangerii: lower gillrakers 8 to 10; second anal fin spine 38 to 49% of standard length (26 to 36% in J. glaucus).

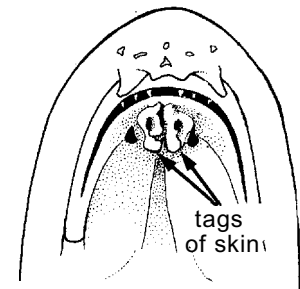
J. elongatus: body more slender, its depth 24 to 28% of standard length (29.4 to 29.7% in J. glaucus); lower gillrakers only 6 or 7; lower jaw with 2 small, knoblike tags around inner mental pores; no black on spinous part of dorsal fin.

Johnieops species: enlarged teeth present in lower jaw; enlarged teeth of upper jaw widely spaced.

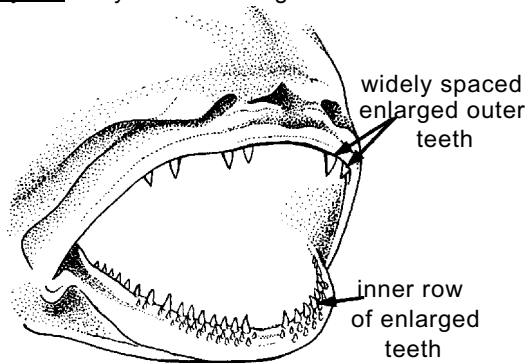
J. macrorhynchus: only 5 to 8 lower gillrakers.



Johnius dussumieri



underside of head
J. elongatus



widely spaced
enlarged outer
teeth

inner row
of enlarged
teeth

SIZE: Johnieops aneus

Maximum: 30 cm; common to 20 cm.

GEOGRAPHICAL DISTRIBUTION AND BEHAVIOUR

Northwest coast of India.

Inhabits shallow muddy coastal waters down to 30 m depth.

PRESENT FISHING GROUNDS:

Coastal waters throughout the range; forms an important constituent of the trawl catches at Bombay.

CATCHES, FISHING GEAR AND FORMS OF UTILIZATION

Separate statistics are not recorded for this species within the area.

Caught with bottom trawls and boat seines.

Marketed fresh and dried salted.

