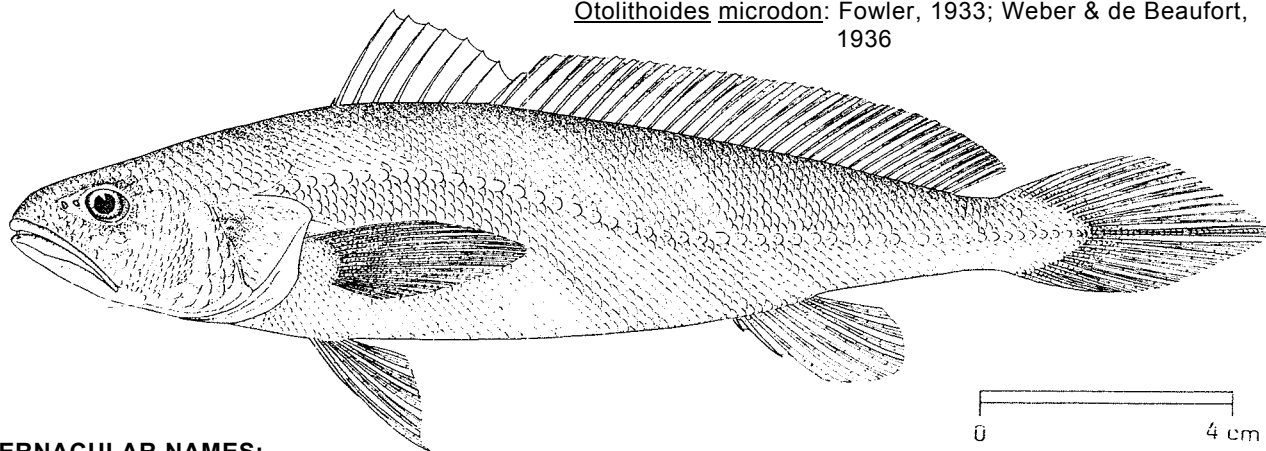


FAO SPECIES IDENTIFICATION SHEETS

FAMILY: SCIAENIDAE

FISHING AREA 51
(W. Indian Ocean)Panna microdon (Bleeker, 1849)

OTHER SCIENTIFIC NAMES STILL IN USE:

Collichthys microdon: Bleeker, 1872; Chevey, 1932Sciaenoides microdon: Day, 1876Otolithoides microdon: Fowler, 1933; Weber & de Beaufort, 1936

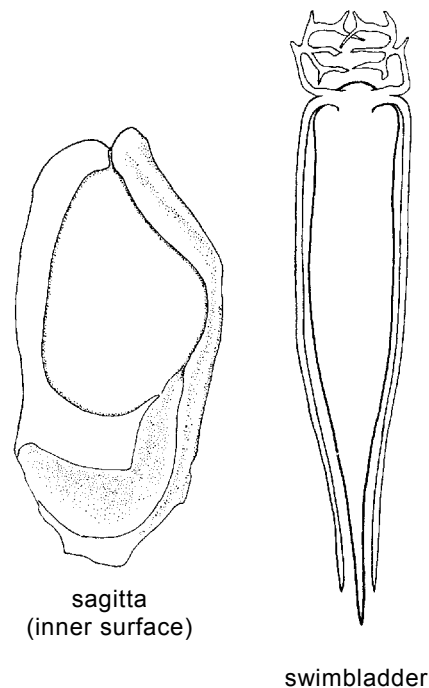
VERNACULAR NAMES:

FAO : En - Panna croaker
 Fr - Courbine ragane
 Sp - Corvina ragana

NATIONAL:

DISTINCTIVE CHARACTERS:

A medium-sized, rather slender species. Snout pointed, mouth large and terminal; upper jaw extending backward beyond hind margin of eye; rostral pores 3, the marginal pores 5; mental pores in 3 pairs, the first small on either side of the symphysis; the second and third pairs slit-like; teeth differentiated into large and small in both jaws; large teeth in upper jaw forming the outer series, and including 1 or 2 canines twice as long as the other enlarged teeth at tip of jaw; large teeth in lower jaw forming the inner series but not including any canines; sagitta (large earstone) with a tadpole-shaped impression, the "tail" of which is broad and deep with a sharp bend between a shorter proximal part and a longer distal part; gillrakers on lower limb of first arch 10 to 12, the 2 or 3 lowermost reduced to short stumps. Dorsal fin with 9 or 10 spines, followed by a notch, second part with 31 to 36 soft rays; pectoral fins moderately long, about 4 times in standard length; anal fin with 2 spines and 6 or 7 soft rays, the second spine rather weak, about half the length of the soft rays; pelvic fins with a short white filament; caudal fin rhomboid with a pointed tip. Scales cycloid (smooth) on head, chest and pectoral fin base, elsewhere finely ctenoid (slightly rough to touch); lateral line scales reaching to tip of caudal fin. Swimbladder carrot-shaped, with one pair of arborescent appendages arising at the anterior end and immediately dividing into an anterior branch entering the head and ramifying under the skull and a posterior tube lying beside the main bladder to its posterior end.



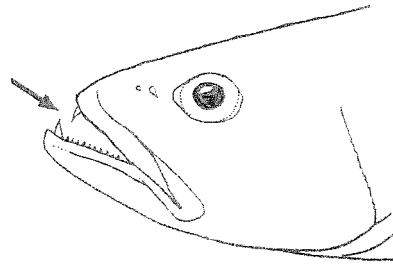
Colour: brown, becoming lighter on flanks and belly. Fins yellow, dorsal and anal fins with darker margin.

DISTINGUISHING CHARACTERS OF SIMILAR SPECIES OCCURRING IN THE AREA:

Otolithes species: canine teeth present also in lower jaw; swimbladder with many arborescent appendages

Chrysochir aureus: snout projecting, mouth subterminal; only 25 to 28 soft dorsal rays (31 to 36 in P. microdon); lower gillrakers 8 or 9 (10 or 11 in P. microdon); swimbladder with many arborescent appendages.

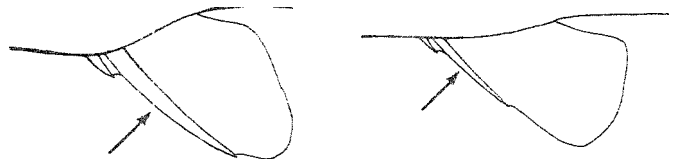
Nibea species: second anal fin spine long and strong; no canines in jaws,



Otolithes ruber

SIZE :

Maximum: 30 cm; common to 20



Nibea sp.

Panna microdon
anal fin

GEOGRAPHICAL DISTRIBUTION AND BEHAVIOUR:

Within the area, known from Sri Lanka and south-east India. Eastward extending to the South China Sea.

Inhabits shallow coastal waters.

PRESENT FISHING GROUNDS :

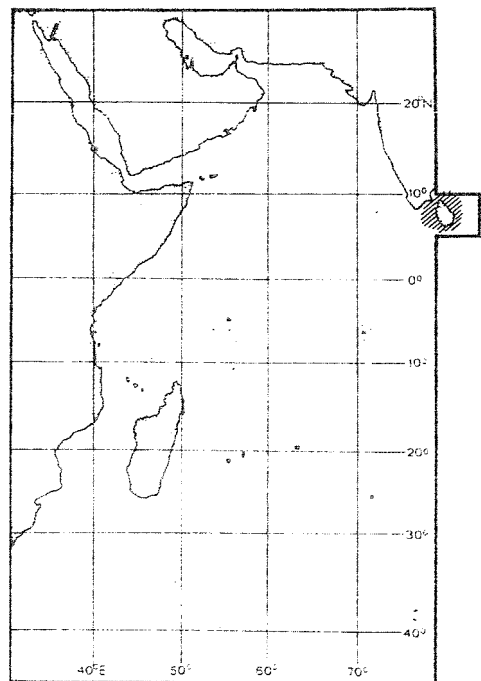
Coastal waters.

CATCHES, FISHING GEAR AND FORMS OF UTILIZATION :

Separate statistics are not reported for this species.

Caught with bottom trawls, gillnets and handlines.

Marketed fresh: also dried salted.

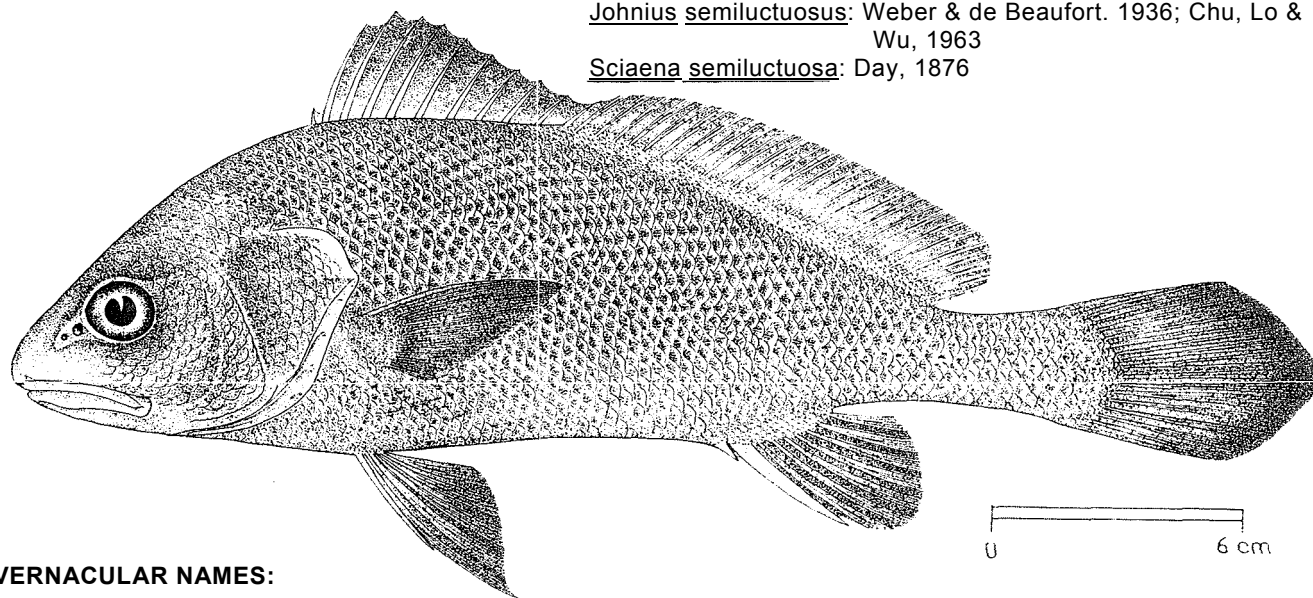


FAO SPECIES IDENTIFICATION SHEETS

FAMILY: SCIAENIDAE

FISHING AREA 51
(W. Indian Ocean)(=SCIAEN Nib 5)
(Fishing Areas 57/71)Paranibea semiluctuosa (Cuvier, 1830)

OTHER SCIENTIFIC NAMES STILL IN USE:

Nibea luctuosa (Cuvier, 1830), in FAO Species Identification
Sheets Areas 57/71Corvina semiluctuosa Cuvier, 1830Johnius semiluctuosus: Weber & de Beaufort. 1936; Chu, Lo &
Wu, 1963Sciaena semiluctuosa: Day, 1876

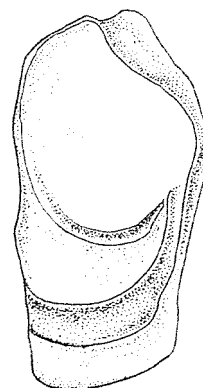
VERNACULAR NAMES:

FAO : En - Half-mourning croaker
Fr - Courbine lugubre
Sp - Corvina lúgubre

NATIONAL:

DISTINCTIVE CHARACTERS:

A fairly small species with an arched back and deep body. Mouth slightly inferior and at a low angle to the horizontal; rostral pores 5, small, marginal pores 5; mental pores 5; teeth differentiated into large and small in upper jaw only, the large ones forming the outer series, with the longest in front but no canines; teeth in lower jaw uniform similar to large teeth in upper jaw; sagitta (large earstone with a tadpole-shaped impression, of which the big pear-shaped "head" is joined by a narrow stem to the broad, deep "tail" which ends close to the ventral edge); gillrakers on lower limb of first arch 5 to 8, with some toothed plates below. Dorsal fin with 9 or 10 spines, followed by a notch, second part of fin with 1 spine and 27 to 31 soft rays; pectoral fins moderately long, about 2/3 of head length; anal fin with 2 spines and 7 soft rays, the second spine long and strong, up to half of head length; caudal fin rounded or bluntly rhomboid. Scales cycloid (smooth) on snout and below eye, elsewhere ctenoid (very rough to touch); lateral-line scales reaching to tip of caudal fin. Swimbladder carrot-shaped, with about 15 to 20 pairs of arborescent appendages, the first rather long, entering the head and branching below the occipital region.

inner surface
sagitta

Colour: dark with numerous oblique wavy black stripes reaching down the flanks to belly; pelvic and anal fins very dark.

DISTINGUISHING CHARACTERS OF SIMILAR SPECIES OCCURRING IN THE AREA:

Nibea species: lower jaw teeth differentiated into large and small. Furthermore, less than 27 soft dorsal fin rays in N. maculata and N. albida; a pair of small barbels on chin in N. albida; 8 or 9 gillrakers on lower limb of first arch in N. soldado (5 to 8 in P. semiluctuosa); big, dark blotches on upper sides of body in N. maculata.

Johnius belangerii: lower jaw with uniform villiform teeth; no stripes on body.

SIZE:

Maximum: 40 cm; common to 30 cm.

GEOGRAPHICAL DISTRIBUTION AND BEHAVIOUR:

Coast of India. Eastwards extending to Sumatra and Java.

Inhabits coastal waters.

PRESENT FISHING GROUNDS:

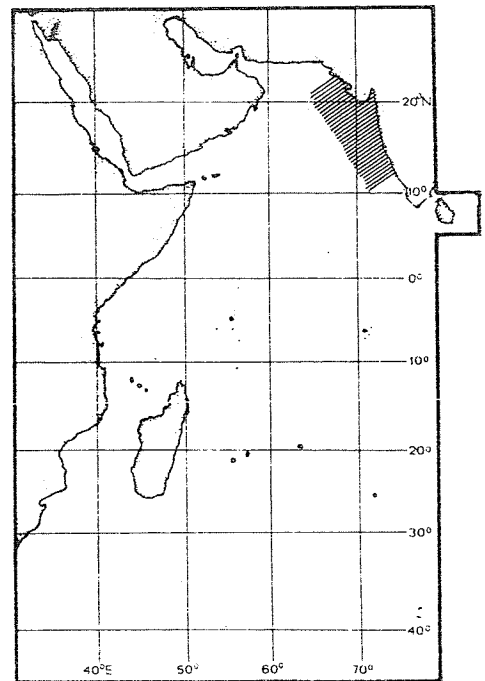
Coastal waters, throughout its range; forms a fishery along the northwest coast of India.

CATCHES, FISHING GEAR AND FORMS OF UTILIZATION:

Separate statistics are not reported for this species within the area.

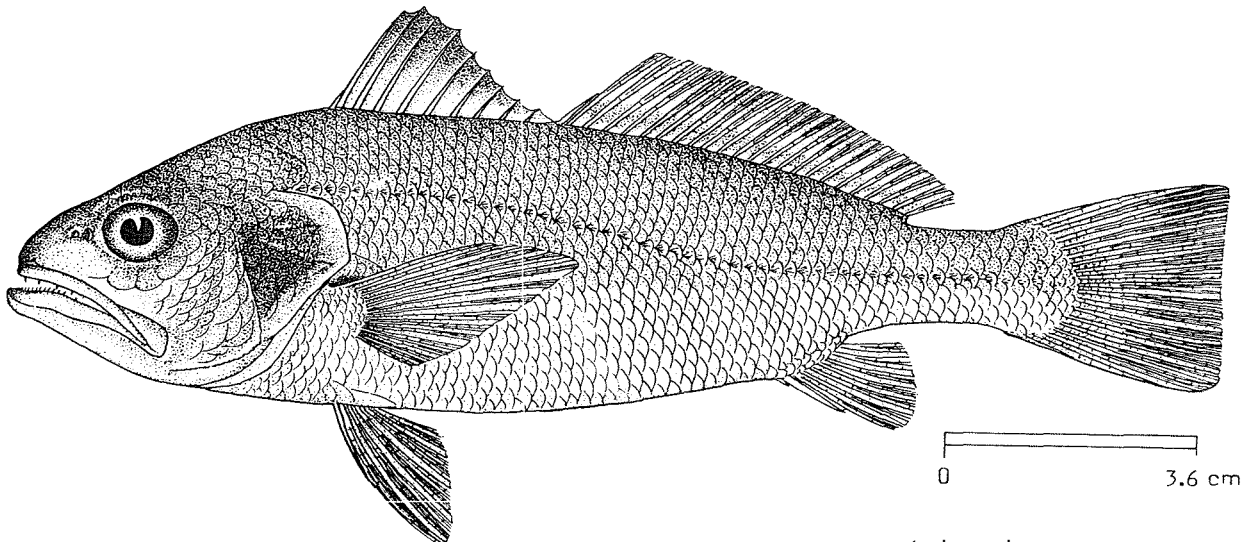
Caught with bottom trawls, gillnets and handlines.

Marketed fresh, also dried salted.



FAO SPECIES IDENTIFICATION SHEETS

FAMILY: SCIAENIDAE

FISHING AREA 51
(W. Indian Ocean)Pennahia macrophthalmus (Bleaker, 1850)OTHER SCIENTIFIC NAMES STILL IN USE: Sciaena aneus (non Bloch): Day, 1876

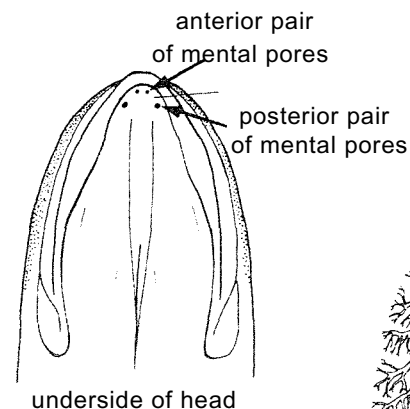
VERNACULAR NAMES:

FAO : En - Bigeye croaker
Fr - Courbine gros yeux
Sp - Corvina ojona

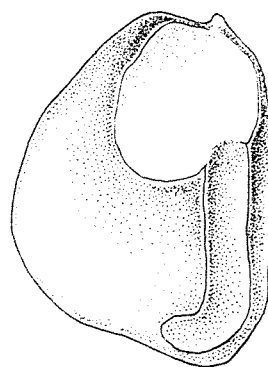
NATIONAL:

DISTINCTIVE CHARACTERS:

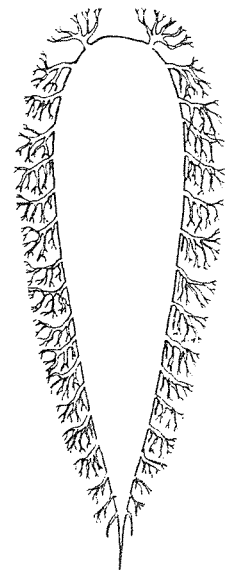
A fairly small, rather deep-bodied species, with a large, terminal, oblique mouth; upper jaw reaching to below hind part of eye; rostral pores absent or minute, marginal pores 5, very small, not notching the edge; mental pores in 2 pairs, both small, the anterior at front of the prominent chin; teeth well differentiated into large and small in both jaws, the large forming the outer series in upper jaw, and inner the series in the lower; no outstanding canine teeth; sagitta (large earstone) with a tadpole-shaped impression, the "tail" of which is hockey-stick-shaped; gillrakers on lower limb of first arch 9 to 12. Dorsal fin with 9 or 10 spines, followed by a notch, second part of the fin with 21 to 26 soft rays; pectoral fins rather long, 25 to 28% of standard length; anal fin with 2 spines and 7 or 8 soft rays, the second spine weak; caudal fin truncate. Scales cycloid (smooth) on snout, elsewhere ctenoid (rough to touch); lateral-line scales reaching to tip of caudal fin. Swimbladder carrot-shaped with 18 to 22 arborescent appendages, the first not entering head, the last a simple tube parallel to the narrow posterior end of the swimbladder.



underside of head



sagitta (inner surface)

swimbladder
ventral view

Colour: body silvery white, back blue/grey; nape with a diffused dusky blotch; upper 2/3 of spinous dorsal fin dusky.

DISTINGUISHING CHARACTERS OF SIMILAR SPECIES OCCURRING IN THE AREA:

Kathala axillaris bears a superficial resemblance to P. macrophthalmus but has no arborescent appendages on swimbladder; mouth more oblique and snout slightly swollen, spot on nape very distinct. Also caudal fin rhomboid (truncate in P. macrophthalmus),

SIZE:

Maximum. 30 cm; common to 18 cm.

GEOGRAPHICAL DISTRIBUTION AND BEHAVIOUR:

Found in the "Gulf" and along the West coast of the Indian subcontinent to Sri Lanka. Eastward extending to Indonesia and northward to China.

Inhabits coastal waters, down to 60 m depth.

Feeds on small shrimps and small fishes.

PRESENT FISHING GROUNDS:

Coastal waters throughout its range.

CATCHES, FISHING GEAR AND FORMS OF UTILIZATION:

Separate statistics are not reported for this species within the area.

Caught with bottom trawls and seine nets.

Marketed fresh and dried salted.



swimbladder
Kathala axillaris

