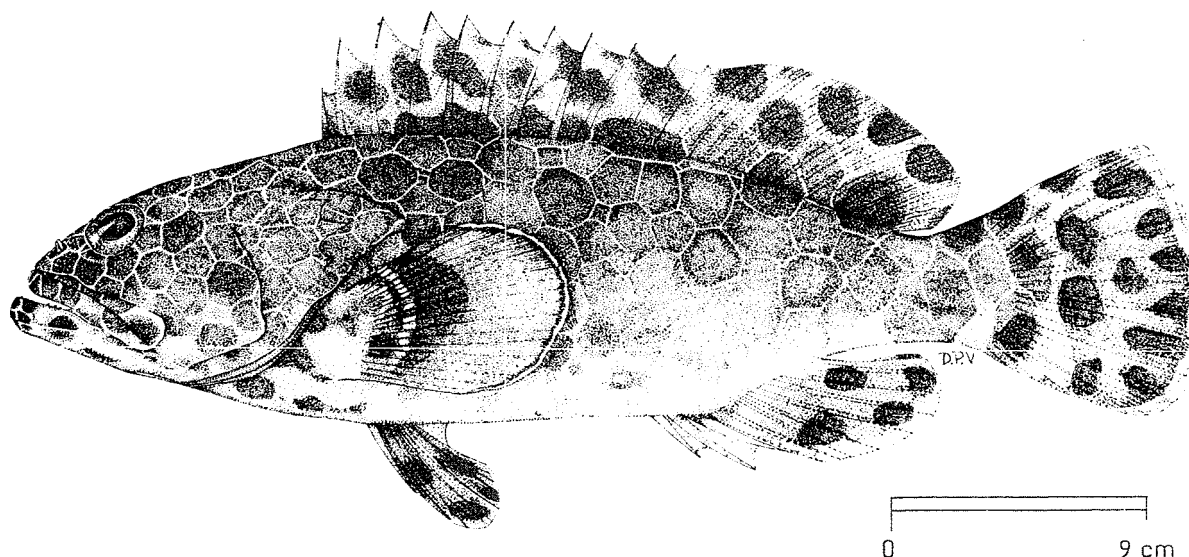


## FAO SPECIES IDENTIFICATION SHEETS

FAMILY: SERRANIDAE

FISHING AREA 51  
(W. Indian Ocean)*Epinephelus faveatus* (Valenciennes, 1828)OTHER SCIENTIFIC NAMES STILL IN USE: *Epinephelus macrospilos* (Bleeker, 1855)

## VERNACULAR NAMES:

FAO :           En - Bigspot grouper  
                   Fr - Mérou tapis  
                   Sp - Mero alfombrado

NATIONAL:

## DISTINCTIVE CHARACTERS:

Body depth contained 3.1 to 3.5 times in standard length. Preopercle finely serrate, the serrae at the angle covered by skin; maxilla reaches to or slightly past vertical at rear edge of eye; midlateral part of lower jaw with 2 rows of teeth; lower gillrakers 14 to 16. Dorsal fin with 11 spines and 15 to 17 soft rays; anal fin with 3 spines and 8 soft rays; pectoral fin rays 18 or 19; pectoral fins 1.65 to 1.95 times in head length; caudal fin rounded. Pored lateral line scales 46 to 52; lateral scale series 92 to 102; body scales mostly cycloid (smooth).

Colour: head and body with closely-set brown and black spots of various sizes, the pale interspaces forming a network pattern; the largest spots equal in size to the eye; chest with irregular dark blotches; median fins pale, with large, blackish spots that are not sharply defined; pectoral fins dusky, with a conspicuous, narrow, white border; bases of pectorals ale, with 1 or 2 vaguely defined dark blotches (some specimens may have as many as 12 poorly defined dark spots in these fins); pelvic fins dusky, with a few black blotches; anal and caudal fins also with a white border. Spots on small juveniles larger than on adults; those on distal part of caudal and anal fins fused, emphasizing the prominent white border of these fins.

## DISTINGUISHING CHARACTERS OF SIMILAR SPECIES OCCURRING IN THE AREA:

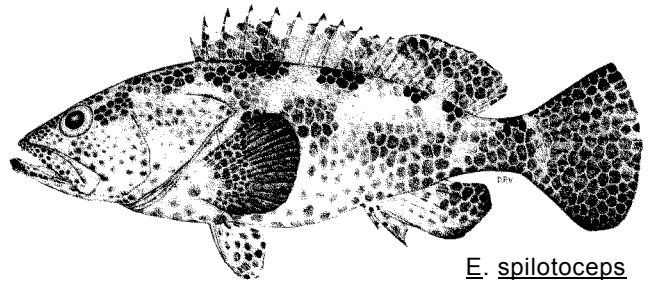
Epinephelus spilotoceps: pored lateral line scales 60 to 67 (46 to 52 in E. faveatus); body scales ctenoid; pectoral fins covered with small, dark spots; midlateral part of lower jaw with 3 or 4 rows of teeth.

E. hexagonatus: pored lateral line scales 61 to 66; mid lateral body scales ctenoid; lower gillrakers 17 to 19 (14 to 16 in E. faveatus); prominent silvery-white specks at the "knot" positions of the pale network pattern.

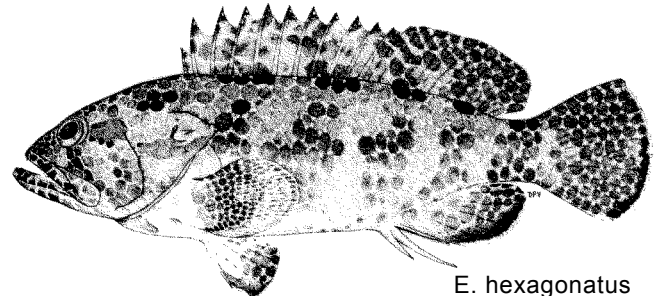
E. melanostigma: a large black blotch on body at base of last 4 dorsal spines; pored lateral line scales 57 to 61; body scales ctenoid; midlateral part of lower jaw with 3 to 5 rows of teeth (2 rows in E. faveatus).

E. merra: fins with prominent, small, dark spots (much smaller than dark spots on body); body scales ctenoid.

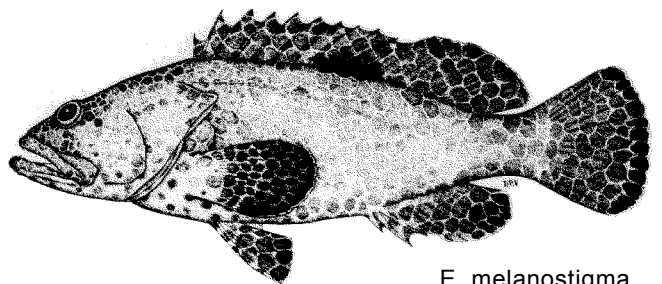
E. quoyanus: pectoral fin pale, with a dark brown bar across dorsal 3/4 of base and small dark spots all over fin; 2 diagonal dark bands on chest; dark spots on median fins smaller and more distinct than those on body; pectoral fins 1.2 to 1.5 times in head (1.65 to 1.8 times in E. faveatus).



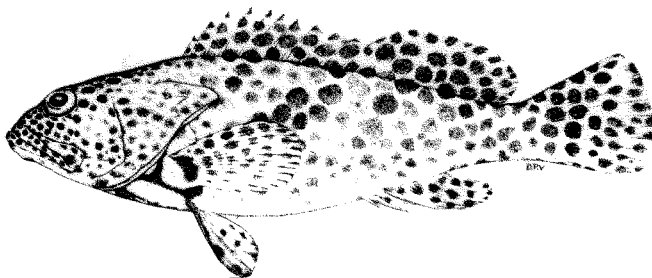
E. spilotoceps



E. hexagonatus



E. melanostigma



E. quoyanus

### SIZE:

Maximum: 51 cm.

### GEOGRAPHICAL DISTRIBUTION AND BEHAVIOUR:

Widespread in the Western Indian Ocean, but not in the Red Sea or in the "Gulf". Also present in the Eastern Indian Ocean and the Western Central Pacific eastward to the Marshall Islands.

### PRESENT FISHING GROUNDS:

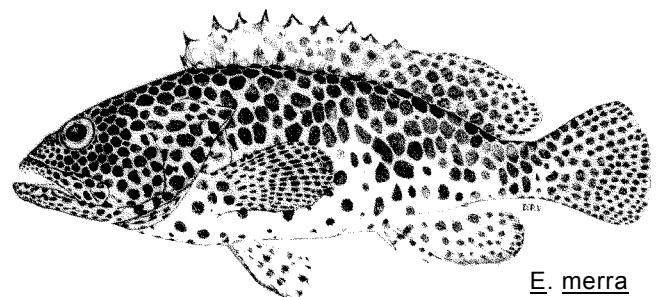
Coral reef areas in depths of 1 to 30 m.

### CATCHES, FISHING GEAR AND FORMS OF UTILIZATION:

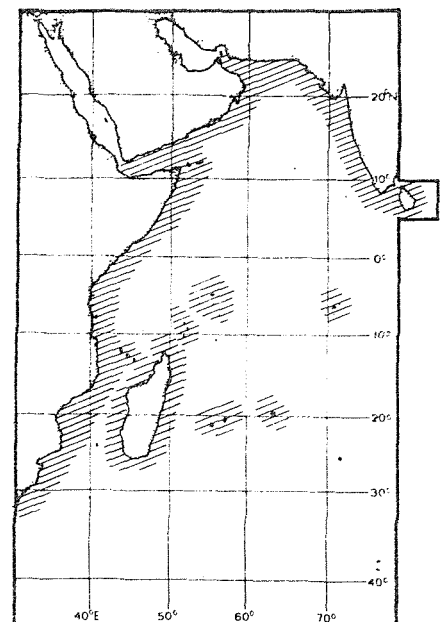
Separate statistics are not reported for this species.

Caught with hook and line, in traps and gillnets.

Sold mostly fresh in local markets.



E. merra

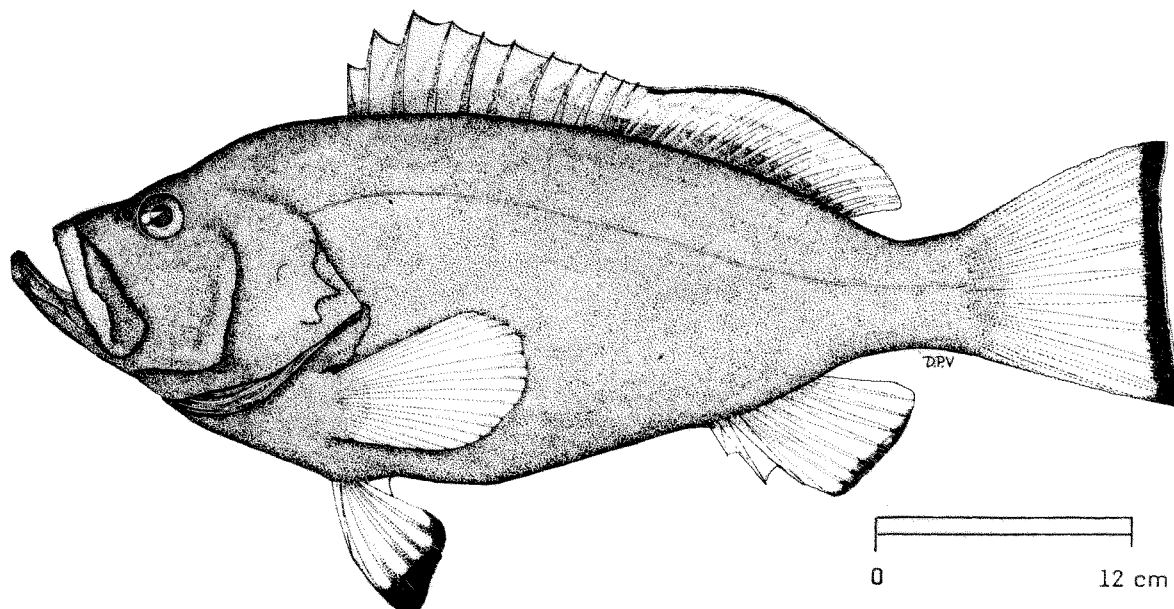


## FAO SPECIES IDENTIFICATION SHEETS

FAMILY: SERRANIDAE

FISHING AREA 51  
(W, Indian Ocean)*Epinephelus flavocaeruleus* (Lacepède, 1802)

OTHER SCIENTIFIC NAMES STILL IN USE: None



## VERNACULAR NAMES:

FAO :        En - Blue and yellow grouper  
               Fr - Mérou faraud  
               Sp -- Mero azul y amarillo

NATIONAL:

## DISTINCTIVE CHARACTERS:

Body depth subequal to or greater than head length, contained 2.4 to 2.7 times in standard length. Preopercle finely serrate, the serrae at the angle not enlarged; adults (larger than 40 cm standard length) with rear nostrils much larger than anterior ones; lower gillrakers 14 to 17. Dorsal fin with 11 spines and 15 to 17 soft rays; the fin membrane slightly incised between the spines; anal fin with 3 spines and 8 soft rays; pectoral fin, rays 18 or 19; pectoral fins subequal to pelvics; caudal fin truncate. Pored lateral line scales 65 to 75; lateral scale series 130 to 150.

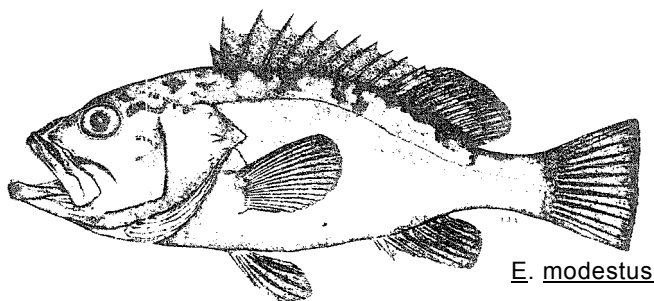
Colour: juveniles (smaller than 30 cm standard length) with head and body dark blue, violet or bluish grey; fins bright yellow; distal third of pelvics black; median fins (except spinous dorsal) narrowly margined with black; body sometimes with pale spots. Large adults (larger than 50 cm standard length) dark grey or purplish brown with yellow reduced to small areas of head and margin of spinous dorsal fin.

**DISTINGUISHING CHARACTERS OF SIMILAR SPECIES OCCURRING IN THE AREA:**

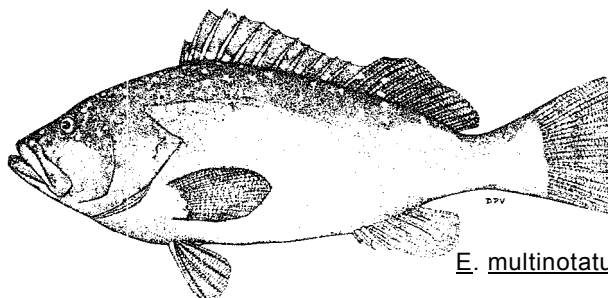
Epinephelus modestus: dorsal fin rays 14; anal fin rays 9 (15 to 17 and 8, respectively, in E. flavocaeruleus); no yellow on fins.

E. multinotatus: dorsal fin membrane not incised between the spines; in life pale spots usually present on dorsal fin and dorsal part of body; no yellow on fins; rear nostrils not more than twice the size of front nostrils.

Other Epinephelus species: colour pattern different; body depth usually less (2.7 to 3.3 times in standard length, versus 2.4 to 2.7 times in E. flavocaeruleus).



E. modestus



E. multinotatus

**SIZE :**

Maximum: 90 cm.

**GEOGRAPHICAL DISTRIBUTION AND BEHAVIOUR:**

Widely distributed in the Western Indian Ocean, but not recorded from the Red Sea or the "Gulf". Also present in the Eastern Indian Ocean and the Western Central Pacific, extending eastward to China, Japan, Australia, Marshall and Gilbert Islands. Juveniles occur on shallow reefs, adults usually in deeper water.

**PRESENT FISHING GROUNDS:**

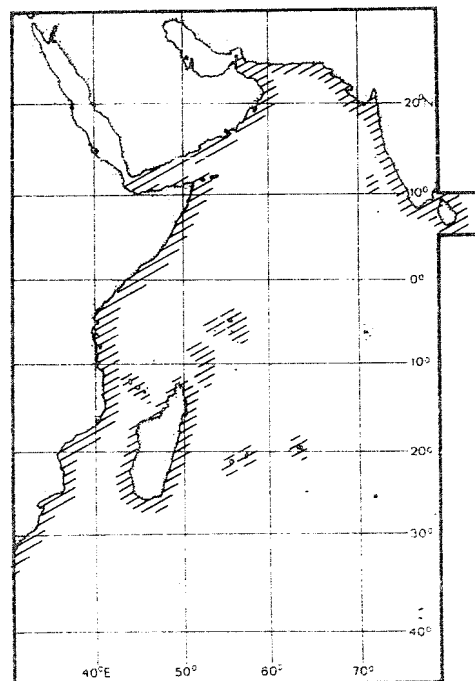
Coral reefs and rocky bottoms to 22 m depth; fairly common on North Kenya banks.

**CATCHES, FISHING GEAR AND FORMS OF UTILIZATION:**

Separate statistics are not reported for this species.

Caught with hook and line and in traps.

Sold fresh in local markets. An important foodfish.

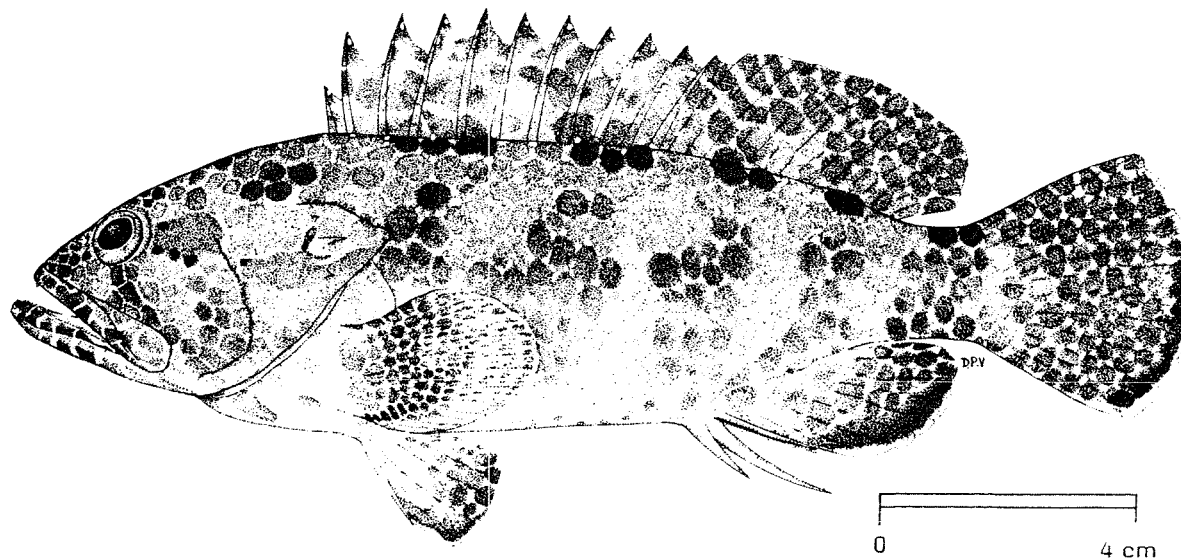


## FAO SPECIES IDENTIFICATION SHEETS

FAMILY: SERRANIDAE

FISHING AREA 51  
(W. Indian Ocean)*Epinephelus hexagonatus* (Schneider, 1801)

OTHER SCIENTIFIC NAMES STILL IN USE: None



## VERNACULAR NAMES:

FAO :           En - White-specked grouper  
                   Fr - M rou m lif re  
                   Sp - Mero mielero

NATIONAL :

## DISTINCTIVE CHARACTERS:

Body depth contained 3.2 to 3.5 times in standard length; caudal peduncle depth less than length of second anal spine. Preopercle serrae enlarged at the angle; maxilla reaches slightly past eye; midlateral part of lower jaw with 3 to 5 rows of teeth; lower gillrakers 17 to 19. Dorsal fin with 11 spines and 15 or 16 soft rays; anal fin with 3 spines and 8 soft rays; pectoral fin rays 18 to 20; caudal peduncle depth less than length of second anal spine, caudal fin rounded. Pored lateral line scales 61 to 66; lateral scale series 93 to 104; midlateral body scales etenoid.

Colour: head, body and median fins with closely-set, small, dark polygonal spots forming a pale network pattern; prominent silvery-white specks at the "knot" positions of the reticulation; 4 black blotches usually present on body at base of dorsal fin extending into fin, and 1 dorsally on caudal peduncle; pectoral fins pale or dusky With indistinct dark spots.

## DISTINGUISHING CHARACTERS OF SIMILAR SPECIES OCCURRING IN THE AREA:

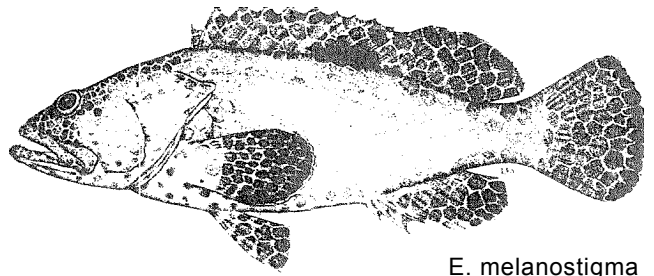
Epinephelus melanostigma: no white specks on pale reticulation lines; caudal peduncle depth not less than length of second anal spine; only 1 black blotch dorsally on body (at base of last 4 dorsal spines).

E. faveatus: pored lateral line scales 49 to 52 (61 to 66 in E. hexagonatus); body scales mostly cycloid (smooth); lower gillrakers 14 to 16 (17 to 19 in E. hexagonatus).

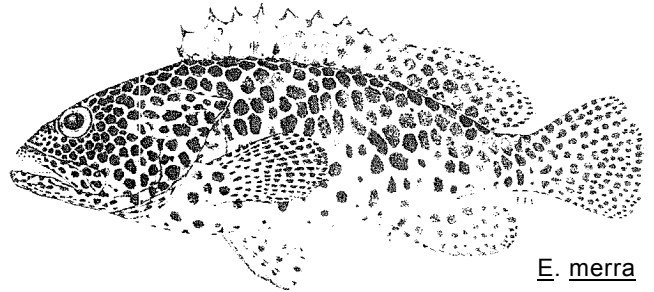
E. merra: pectoral fins pale, with distinct small dark spots; pored lateral line scales 48 to 54; lower gillrakers 15 to 17.

E. spilotoceps: lower gillrakers 14 to 17; front part of head with small black or dark brown spots; pectoral fins with small dark spots.

E. areolatus: caudal fin truncate; pored lateral line scales 50 to 56.



E. melanostigma



E. merra



E. areolatus



E. spilotoceps

### SIZE:

Maximum: 25 cm.

### GEOGRAPHICAL DISTRIBUTION AND BEHAVIOUR:

Tropical Western Indian Ocean from Mozambique to Sri Lanka but absent from the Red Sea and the "Gulf". Also present in the Eastern Indian Ocean and the Western Central Pacific, eastward to the Marshall islands and southern Japan.

### PRESENT FISHING GROUNDS:

Coral reef areas in depths to 30 m; it seems to be rare in the area.

### CATCHES, FISHING GEAR AND FORMS OF UTILIZATION:

Separate statistics are not reported for this species, too small to be of commercial importance.

Caught with hook and line and in traps.

Sold fresh and dried salted in local markets.

