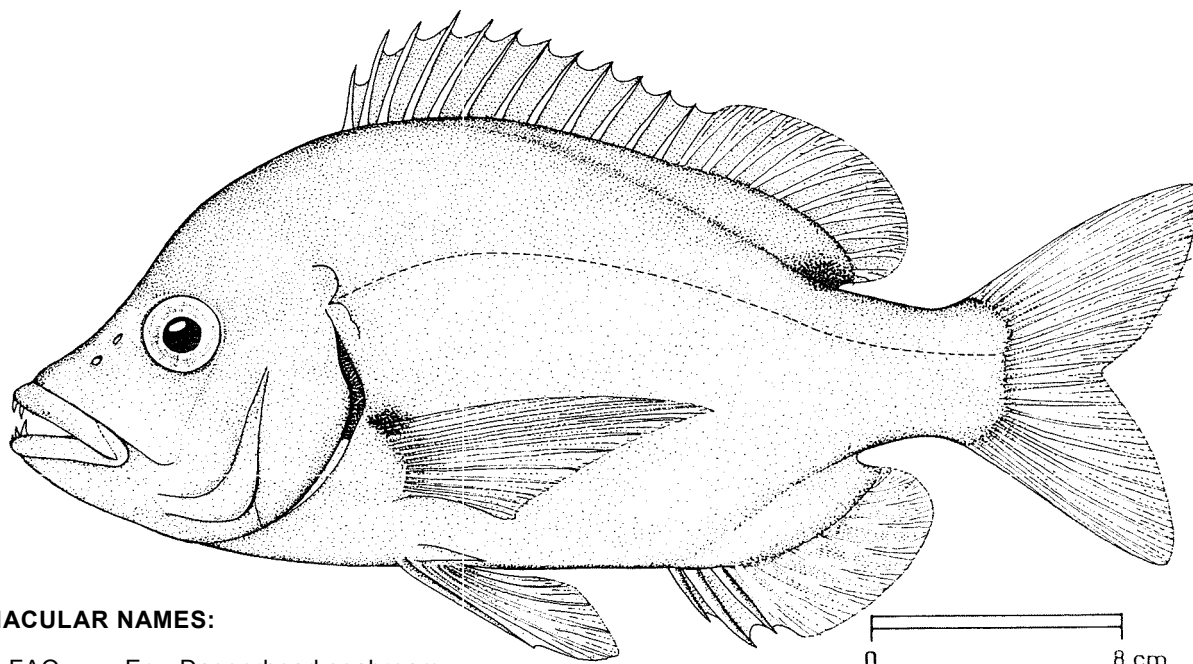


FAO SPECIES IDENTIFICATION SHEETS

FAMILY: SPARIDAE

FISHING AREA 51
(W. Indian Ocean)*Chrysolephus cristiceps* (Valenciennes, 1830)

OTHER SCIENTIFIC NAMES STILL IN USE: None



VERNACULAR NAMES:

FAO : En - Daggerhead seabream
Fr - Spare poignard
Sp - Sargo punal

NATIONAL:

DISTINCTIVE CHARACTERS:

Body deep, compressed, its depth about twice in standard length. Head profile more or less concave from snout tip to above eye, thence gently convex to dorsal fin origin (with age the nape becomes elevated); eye moderate, its diameter less than suborbital space; snout somewhat pointed, mouth oblique, maxilla reaching to below anterior margin of eye or nearly so; at front of jaws, 4 upper and 6 lower enlarged canines; in juveniles, on each side, an outer row of conical teeth anteriorly becoming blunt, with molars posteriorly; several inner rows of small teeth, those behind the canines pointed, the lateral ones granular; in adults, 2 or 3 series of molars, the outer much larger than the inner; gillrakers 10 to 1.3 on lower limb of first arch. Dorsal fin with 12 spines and 10 soft rays; anal fin with 3 spines and 8 soft rays, pectoral fins reaching to above anal fin rays; caudal fin forked, with rounded lobes Scales rough, moderate, 55 to 61 in lateral line; scalation on top of head extending to beyond front margin of eye; preopercle flange completely scaly; soft dorsal and anal fins densely scaly at bases, with a vestigial sheath.

Colour: whole fish red with waves of blue, green, bronze, orange passing over the body as the fish dies (hence the vernacular names meaning daybreak or dawn); a faint blue bar below eye; hind margin of opercle, and scales above it bluish. A dark spot at pectoral fin axil and a black spot at base of last dorsal rays, with dusky to blue shading extending dorsally.

DISTINGUISHING CHARACTERS OF SIMILAR SPECIES OCCURRING IN THE AREA:

The presence of the black spot on base of last dorsal ray easily separates this species from any other deep, compressed, red sparid occurring in the area.

SIZE:

Maximum: 65 cm; common to 40 cm.

GEOGRAPHICAL DISTRIBUTION AND BEHAVIOUR:

In the area, found only off Durban (South Africa), southward extending to the Cape of Good Hope.

Occurs in waters from 30 to 100 m depth.

Feeds on crustaceans, molluscs, worms and small fish.

PRESENT FISHING GROUNDS:

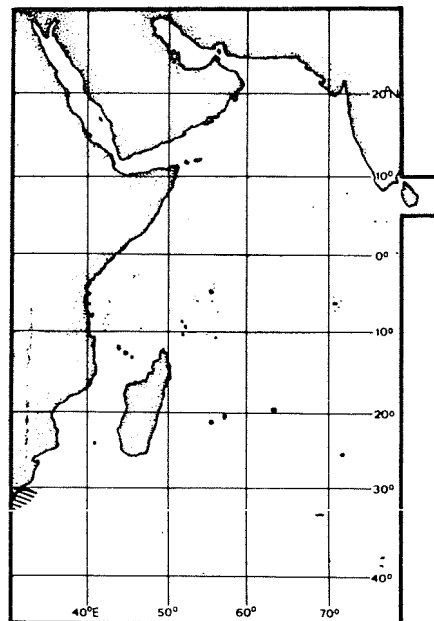
Throughout its range.

CATCHES, FISHING GEAR AND FORMS OF UTILIZATION:

Separate statistics are not reported for this species; the combined catches of Chrysoblephus species usually do not exceed 200 tons annually.

An important commercial species, known as one of the "red" fishes, caught mainly with line gear.

Marketed fresh.

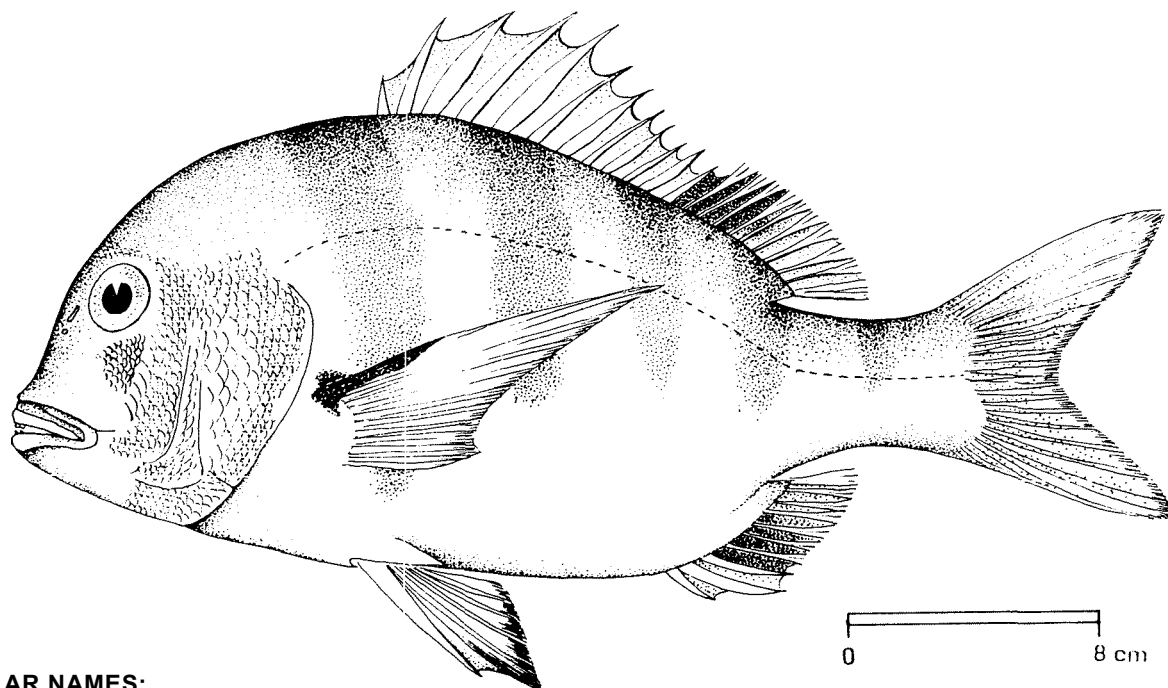


FAO SPECIES IDENTIFICATION SHEETS

FAMILY: SPARIDAE

FISHING AREA 51
(W. Indian Ocean)*Chrysoblephus gibbiceps* (Valenciennes, 1830)

OTHER SCIENTIFIC NAMES STILL IN USE: None



VERNACULAR NAMES:

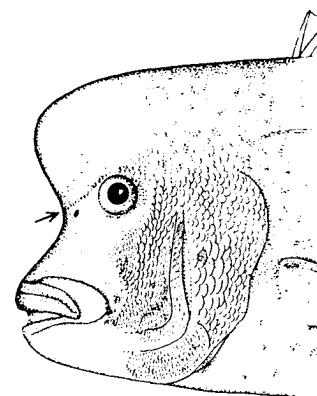
FAO : En - Red stumpnose seabream
 Fr - Spare gibbeux
 Sp - Sargo cabezón

NATIONAL:

DISTINCTIVE CHARACTERS:

Body rather deep, compressed, its depth 2 to 2.4 times in standard length. Head profile very steep from upper lip, slightly concave between snout and nostrils, with a bulge at interorbital space, increasing with growth; in males, the nape becomes gibbous with a large, protruding forehead; mouth subhorizontal, maxilla reaching to below anterior half of eye; at front of jaws, 4 or 5 moderate canines; in juveniles, on each side, an outer row of low, conical teeth anteriorly, becoming large molars posteriorly, and several inner rows of granular teeth; in adults 4 or 5 series of molars, the outer largest; gillrakers 11 or 12 on lower limb of first arch. Dorsal fin with 11 or 12 spines and 10 or 11 soft rays; anal fin with 3 spines and 7 to 9 soft rays; pectoral fins longer than head, reaching to above anal rays; caudal fin forked. Scales moderate, 51 to 55 in lateral line; scalation on top of head reaching to above nostrils; a large patch of small scales in suborbital space below eye; preopercle flange scaly; soft dorsal and anal fins with small basal scales and a vestigial sheath.

Colour: reddish with golden reflections, lighter below; 5 to 7 faint dark red crossbars, body with numerous irregular black flecks. Axil of pectoral fins dark, membrane of soft dorsal, caudal and soft anal fins variably blackish; pelvic fins black-edged; some yellow on median fins.



large male

DISTINGUISHING CHARACTERS OF SIMILAR SPECIES OCCURRING IN THE AREA:

The combination of characters described above, especially the coloration and the characteristic concave profile of snout, easily separates this species from any other sparid in the area.

SIZE:

Maximum: 75 cm; common to 50 cm.

GEOGRAPHICAL DISTRIBUTION AND BEHAVIOUR:

In the area found off Natal (South Africa), southward extending to the Cape of Good Hope.

Occurs from shallow coastal waters (10 m) to about 100 m depth.

Feeds on crustaceans, molluscs, worms and small fishes.

PRESENT FISHING GROUNDS:

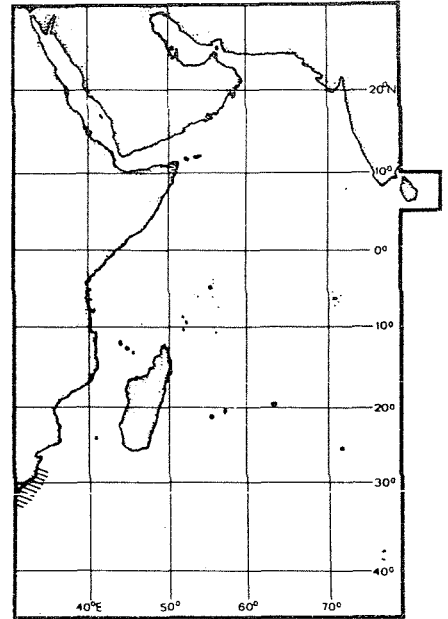
Coastal waters throughout its range.

CATCHES, FISHING GEAR AND FORMS OF UTILIZATION:

Separate statistics are not reported for this species; the combined catches of *Chrysoblephus* species usually do not exceed 200 tons annually.

Caught with line gear and trawlers, mainly along the Cape coast, where it forms an important component of the "red fish" group.

Marketed fresh.

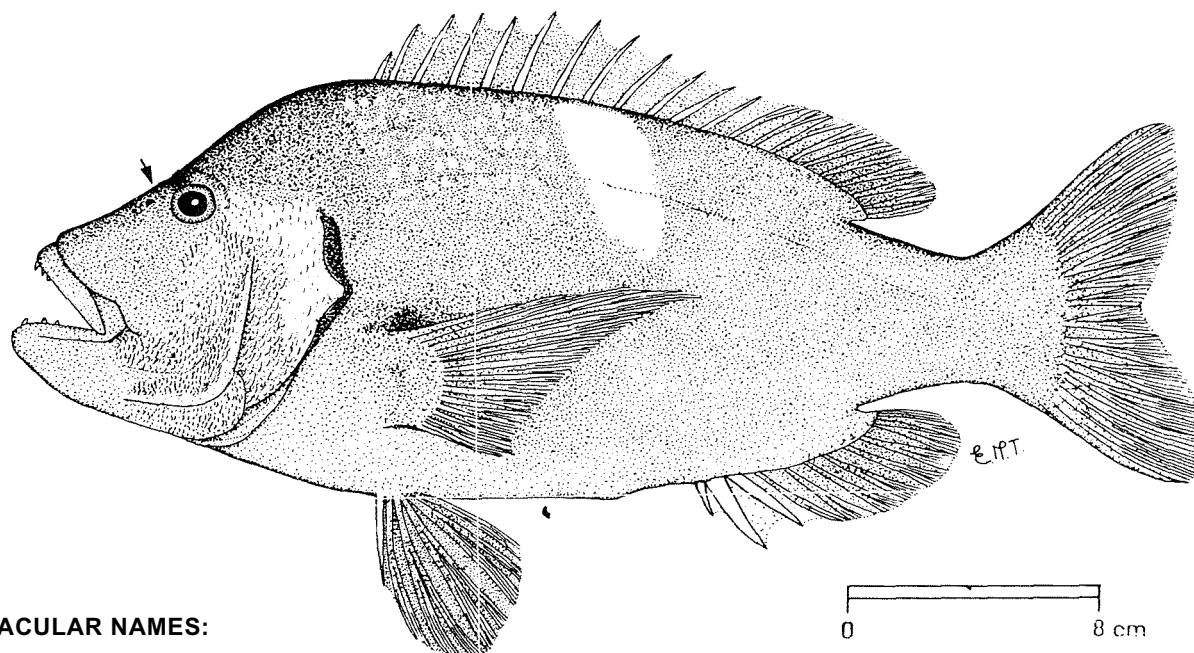


FAO SPECIES IDENTIFICATION SHEETS

FAMILY: SPARIDAE

FISHING AREA 51
(W. Indian Ocean)Chrysoblephus laticeps (Valenciennes, 1830)

OTHER SCIENTIFIC NAMES STILL IN USE: None



VERNACULAR NAMES:

FAO : En - Roman seabream
 Fr - Spare à selle blanche
 Sp - Sargo moritura bianca

NATIONAL:

DISTINCTIVE CHARACTERS:

Body ovate, its depth about 2.3 to 2.5 times in standard length. Head profile gently sloping from origin of dorsal fin to snout, becoming concave in front of eye with age; interorbital space and nape broad and convex; mouth oblique, maxilla can extend to below front margin of eye; at front of jaws, 4 to 6 moderate canines; in juveniles, on each side an outer row of small, conical teeth becoming obtuse and molariform posteriorly; several inner series of smaller, pointed teeth behind canines and granular teeth laterally; in adults, 3 to 5 upper, 2 or 3 lower series of molars, the outer largest; lips strongly villose; gillrakers 10 to 12 on lower limb of first arch. Dorsal fin with 12 (rarely 11) spines and 10 (rarely 11) soft rays; anal fin with 3 spines and 7 to 9 (usually 8) soft rays; pectoral fins reaching to above anal fin; caudal fin slightly forked, lobes rounded. Scales moderate, 58 to 62 in lateral line; scalation on top of head extending to above nostrils; preopercle flange scaly except its margin; soft dorsal and anal fins densely scaly at base with a vestigial sheath.

Colour: head, body and fins brilliant vermillion or orange red; a blue bar across interorbital space, a white bar on opercle; a white saddle below 7th and 9th dorsal spines extending below lateral line; silvery spots on scales of body anterior to this bar; pectoral fin axil darkish, yellow reflections on membrane between dorsal spines.

DISTINGUISHING CHARACTERS OF SIMILAR SPECIES OCCURRING IN THE AREA:

The coloration of this species, especially the white bar on opercle and the white saddle below 7th and 9th dorsal spines, easily separates it from any other species in the area.

SIZE:

Maximum: 50 cm; common between 30 and 35 cm.

GEOGRAPHICAL DISTRIBUTION AND BEHAVIOUR:

South Africa only, doubtfully recorded from Mauritius and Zanzibar.

Occurs above rocky grounds in more or less deep waters, often taken well off shore.

Feeds on molluscs, crustaceans, worms and fish.

PRESENT FISHING GROUNDS:

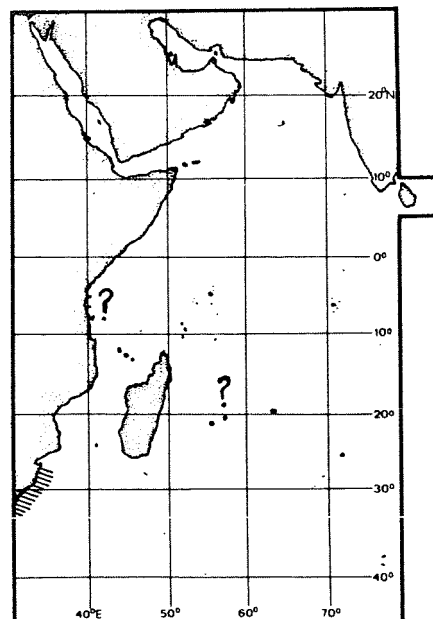
Throughout its range.

CATCHES, FISHING GEAR AND FORMS OF UTILIZATION:

Separate statistics are not reported for this species; the combined catches of Chrysoblephus species usually do not exceed 200 tons annually.

A rather important commercial fish, caught mainly with line gear. Known as one of the "red fish".

Marketed fresh.



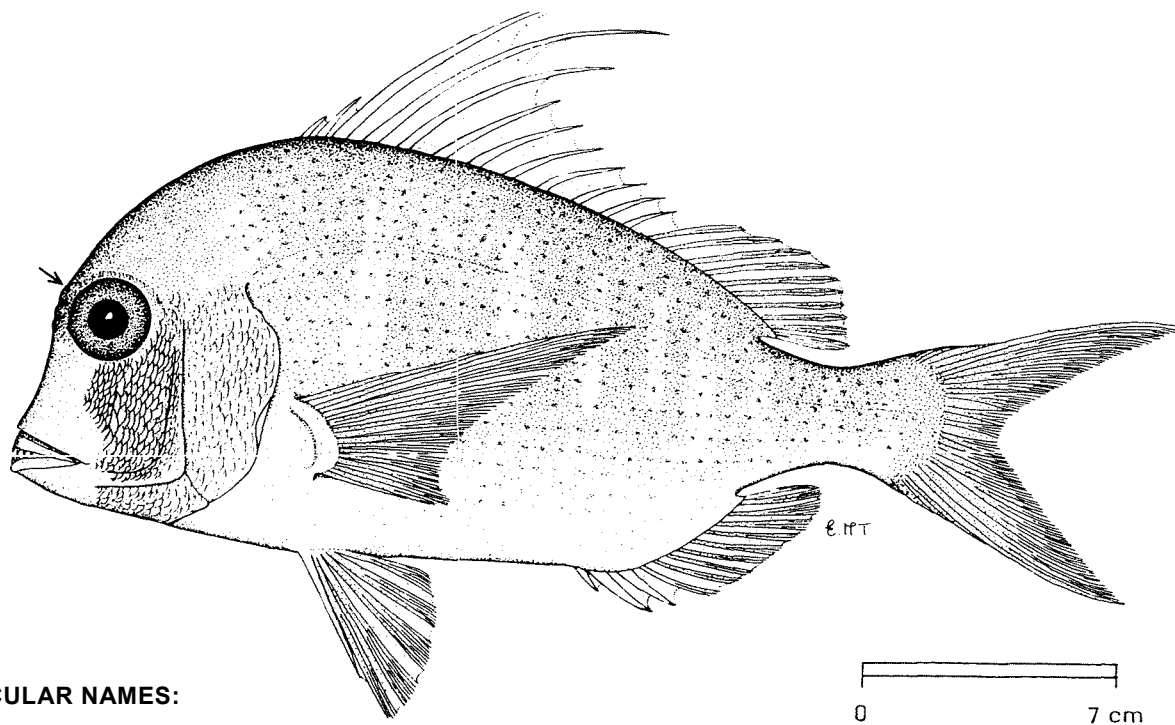
FAO SPECIES IDENTIFICATION SHEETS

FAMILY: SPARIDAE

FISHING AREA 51
(W. Indian Ocean)

Chrysotdephus lophus (Fowler, 1925)

OTHER SCIENTIFIC NAMES STILL IN USE: None



VERNACULAR NAMES:

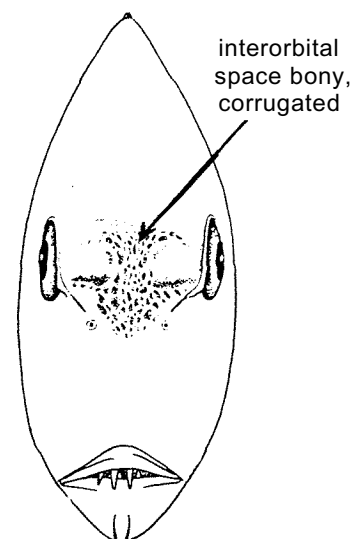
- FAO : En - False red stumpnose
- Fr - Spare à front rayé
- Sp - Sargo nato

NATIONAL:

DISTINCTIVE CHARACTERS:

Body deep, compressed, its depth about twice in standard length. Head profile very steep, concave from above upper lip to corrugated bony interorbital space which becomes more pitted between eyes with growth; snout sharply angular, mouth horizontal, the maxilla reaching to below anterior third of eye; at front of jaws, 4 to 6 moderate canines; in juveniles, on each side, an outer row of low, conical teeth anteriorly, becoming large molars posteriorly, and several inner rows of small granular teeth; in adults, a band of about 5 series of molars in each jaw; gillrakers 12 or 13 on lower limb of first arch. Dorsal fin with 12 spines (3rd to 7th elongated, 3rd the longest, equal to, or longer than, head) and 10 soft rays; anal fin with 3 short spines and 8 or 9 soft rays; pectoral fins longer than head, reaching to above anal rays; caudal fin forked. Scales moderate, 56 to 58 in lateral line; scalation on head extending to bony interorbital space above nostrils; cheek scalation with a forward extension of smaller scales along suborbital space below eye; preopercle flange scaly, soft dorsal and anal fins densely scaly with a vestigial sheath at base.

Colour: red with lighter bars up from light belly, becoming yellow above midline; alternate yellow and red lines across bony interorbital space; all spines and rays red, but membrane of dorsal and anal fins yellow; a blue spot on each body scale becoming fainter toward belly.



DISTINGUISHING CHARACTERS OF SIMILAR SPECIES OCCURRING IN THE AREA:

The coloration of this species, especially the yellow and red lines across the pitted interorbital space easily separates it from any other fish in the area.

SIZE:

Maximum: 50 cm; common between 30 and 40 cm.

GEOGRAPHICAL DISTRIBUTION AND BEHAVIOUR:

Found only off Natal (South Africa).

Occurs in about 50 m depth.

Feeds on crustaceans, molluscs, worms and small fish.

PRESENT FISHING GROUNDS:

Throughout its range.

CATCHES, FISHING GEAR AND FORMS OF UTILIZATION:

Separate statistics are not reported for this species; the combined catch of Chrysoblephus species usually do not exceed 200 tons annually.

Caught mainly with line gear. A commercially important species, known as one of the "red fish".

Marketed fresh.

