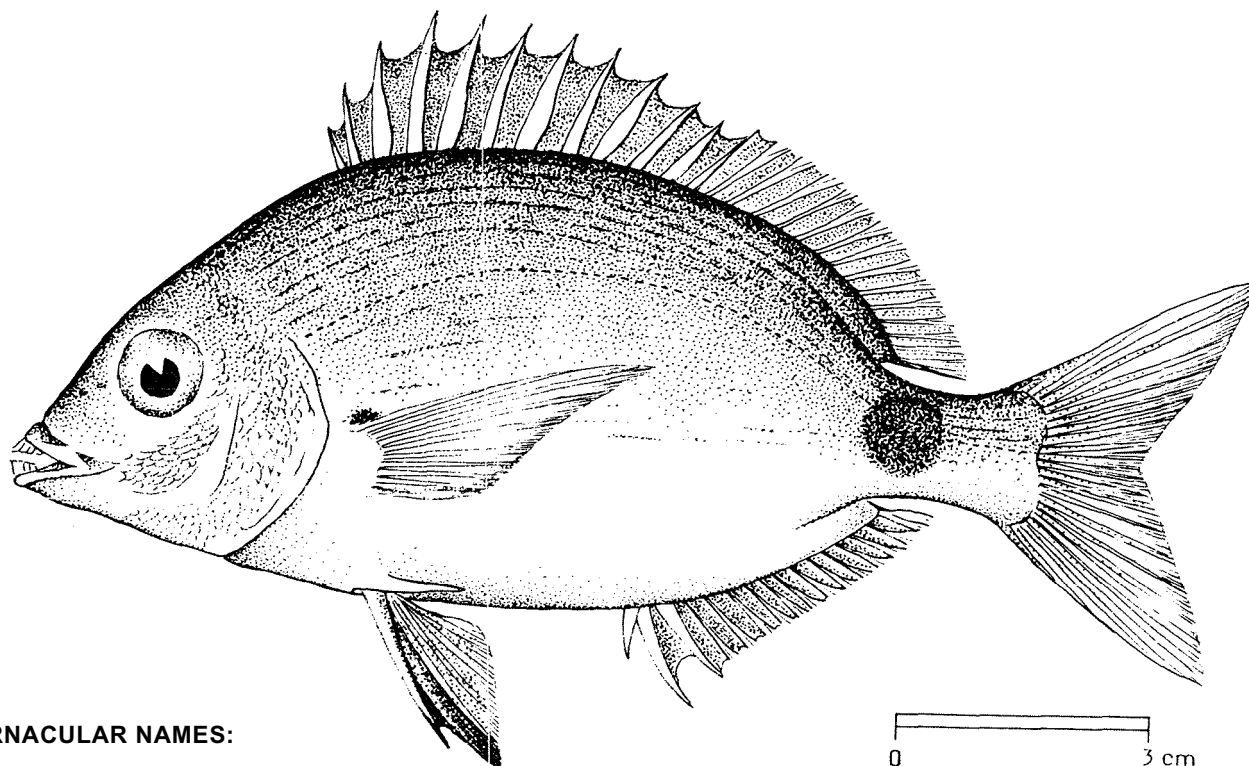


FAO SPECIES IDENTIFICATION SHEETS

FAMILY: SPARIDAE

FISHING AREA 51
(W. Indian Ocean)*Diplodus sargus kotschyi* (Steindachner, 1876)OTHER SCIENTIFIC NAMES STILL IN USE : *Diplodus noct* Valenciennes, 1830 pro parte

VERNACULAR NAMES:

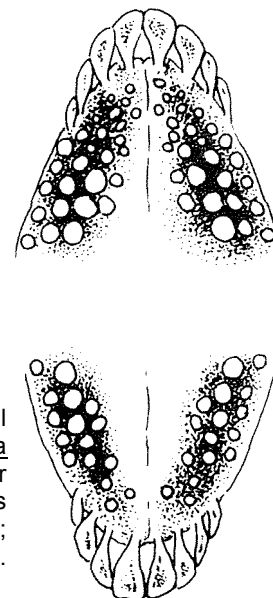
FAO: En - One spot seabream
Fr - Sar lune
Sp - Sargo luna llena

NATIONAL:

DISTINCTIVE CHARACTERS:

Body oval, rather deep, compressed, its depth 2 to 2.3 times in standard length. Head profile fairly steep (almost straight) from tip of snout to nape and strongly convex on back; snout pointed, mouth rather protrusible, the maxilla reaching to about below anterior margin of eye; both jaws with normally 6 broad incisor-like teeth anteriorly, compressed and forwardly inclined; laterally 3 or 4 upper and 2 or 3 lower rows of rounded molar-like teeth and smaller ones just behind the incisors; gillrakers 8 to 10 on the lower limb of first arch. Dorsal fin with 12 spines and 13 to 15 soft ray;; anal fin with 3 spines and 12 to 14 soft rays; pectoral fins long, reaching to anal spines; caudal fin forked. Scales moderate, 60 to 68 in lateral line, 7 or 8 between lateral line and 4th dorsal spine; a well developed scaly sheath at bases of dorsal and anal fins.

Colour: silvery grey with bluish reflections, becoming paler ventrally; longitudinal dark streaks along rows of scales, more conspicuous on midlateral region of sides; a distinct, round, black blotch on caudal peduncle just behind dorsal fin, less large than, or about equal to eye; a dark spot on pectoral fin axils; spinous dorsal fin grey, membranes darker than spines; soft dorsal, anal fins and caudal fin dark with a light orange tinge; pelvic fins dusky, darkened on outer rays; pectoral fins hyaline, with a light brownish tinge. Young individuals with 8 or 9 transverse dark bars.



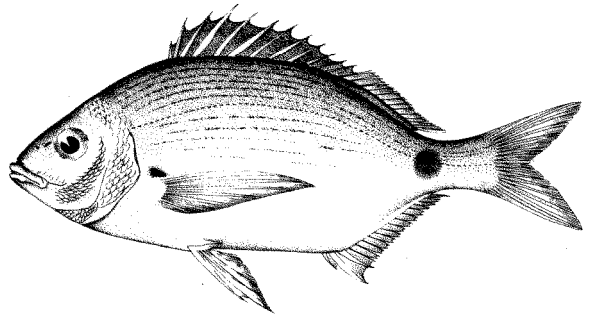
upper and lower jaws

DISTINGUISHING CHARACTERS OF SIMILAR SPECIES OCCURRING IN THE AREA:

Diplodus noct (until now not known to overlap geographical range of D. s. kotschyi): body more elongate dept 2.25 to 2.6 in standard length; gill-rakers 12 or 13 on lower limb of first arch; pelvic fins pale.

SIZE:

Maximum: 30 cm; common to 15 cm.



Diplodus noct

GEOGRAPHICAL DISTRIBUTION AND BEHAVIOUR:

The "Gulf" and Northern Indian coast (Sind).

A common species, especially in rocky shallow coastal waters.

Feeds on algae and small invertebrates.

PRESENT FISHING GROUNDS:

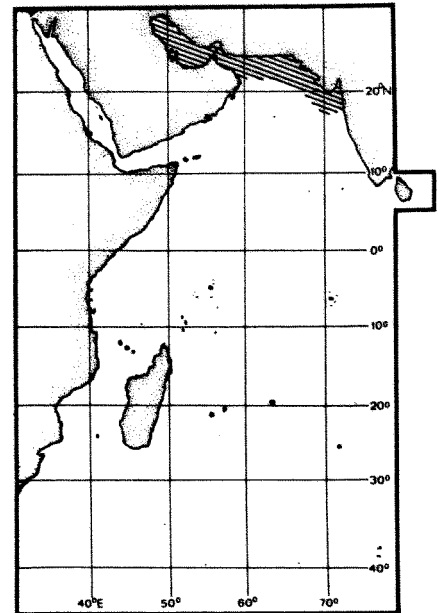
Throughout its range.

CATCHES, FISHING GEAR AND FORMS OF UTILIZATION:

Separate statistics are not reported for this subspecies.

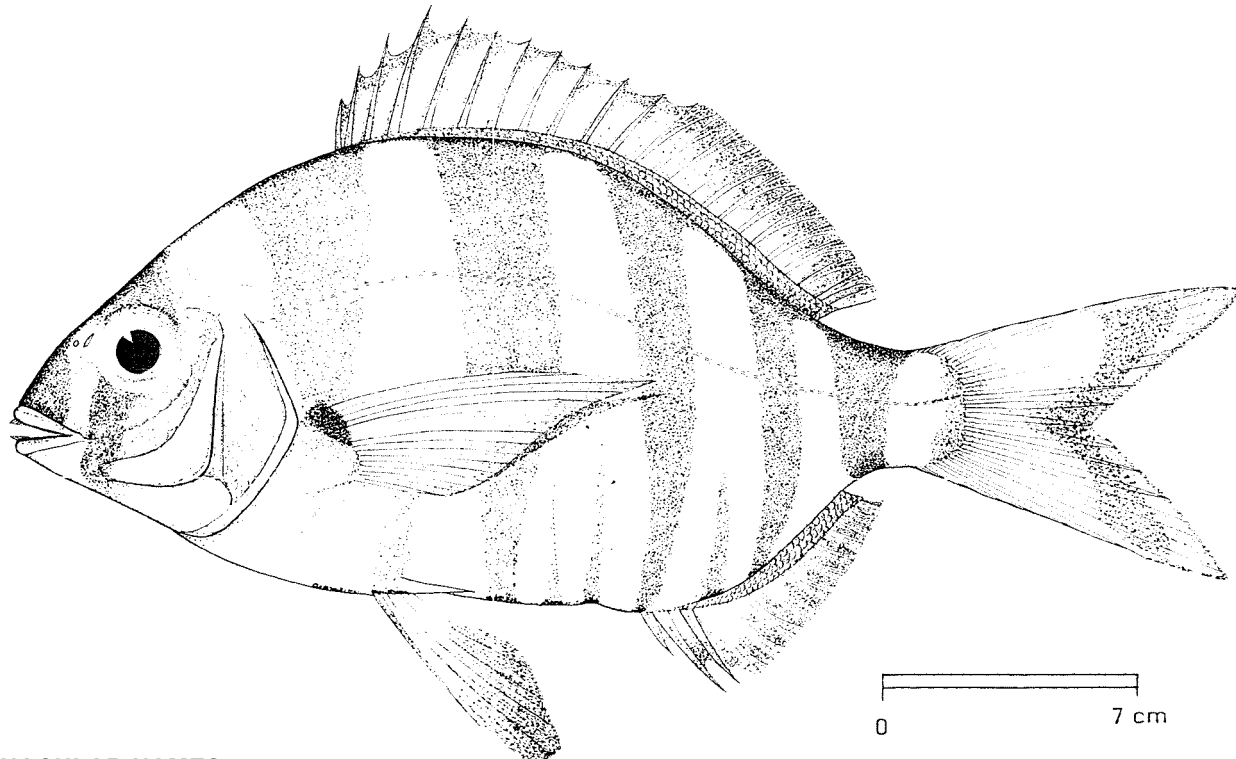
Caught mainly with handlines, also with trawls.

Not sold extensively, used fresh.



FAO SPECIES IDENTIFICATION SHEETS

FAMILY : SPARIDAE

FISHING AREA 51
(W. Indian Oceans)*Diplodus cervinus hottentotus* (Smith, 1849)OTHER SCIENTIFIC NAMES STILL IN USE : *Diplodus trifasciatus* (Rafinesque, 1810)

VERNACULAR NAMES:

FAO : En - Zebra seabream (mouth Africa)
Fr - Sar à grosses lèvres (Afrique du Sud)
Sp - Sargo breado (Africa del Sur)

NATIONAL:

DISTINCTIVE CHARACTERS:

Body oval, deep and compressed, its depth about twice in standard length. Head profile moderately steep and straight from upper lip to nape, thence convex to dorsal fin origin; snout rather blunt; mouth somewhat protractile, the maxilla reaching to below anterior margin of eye and completely concealed by the suborbital bone when mouth is closed; lips thick; 10 to 12 inclined, truncate incisor-like teeth in upper jaw, 8 in lower jaw, followed by 1 to 3 (usually 2) rows of small molars; gillrakers 9 or 10 on lower limb of first arch. Dorsal fin single, with 11 rarely 10) spines, and 12 to Dually 13) soft rays; anal fin with 3 spines and 11 soft rays; pectoral fins reaching to above anal fin; caudal fin forked. Scales moderate, 61 to 68 in lateral line; 9 or 10 between lateral line and 4th dorsal spine; no scales between eyes and on preopercle flange; a scaly sheath at base of dorsal and anal fins.

Colour: silvery yellowish (large adults burnished gold) with 5 distinct, broad, black crossbars on body (the first before dorsal fin, the last on caudal peduncle) and 3 or 4 smaller bars in the 3 first interfaces, reaching about third or half way up body; head with another bar from nape across eyes and cheeks to ventral profile; snout darkish. A black spot at upper part of pectoral fin axil; soft dorsal, anal, edges of caudal and pelvic fins dark maroons-red; pectoral fins lighter maroon-red; lips pink, with a scarlet blotch below at symphysis.

DISTINGUISHING CHARACTERS OF SIMILAR SPECIES OCCURRING IN THE AREA:

Diplodus sargus capensis: 8 incisors on upper jaw (10 to 12 in D. cervinus); 6 to 9 narrow, more or less faint dark crossbars on sides, and a large black saddle on caudal peduncle.

Dascyllus and Abudefduf species (Pomacentridae) with crossbars: teeth setiform (incisors in Diplodus), scales ctenoid (rough) (smooth in Diplodus).

SIZE:

Maximum: 60 cm; common between 25 and 35 cm.

GEOGRAPHICAL DISTRIBUTION AND BEHAVIOUR:

In the area, from southern Mozambique to South Africa, southward extending to the Cape of Good Hope; (subspecies of D. cervinus cervinus occurs in the Atlantic and Mediterranean). Occurs in coastal waters, down to 100 m depth and more, mainly on rocky bottoms; enters estuaries, which are also used as nursery grounds.

Feeds on a wide variety of organisms (fish, molluscs, crustaceans, worms, etc.).

PRESENT FISHING GROUNDS:

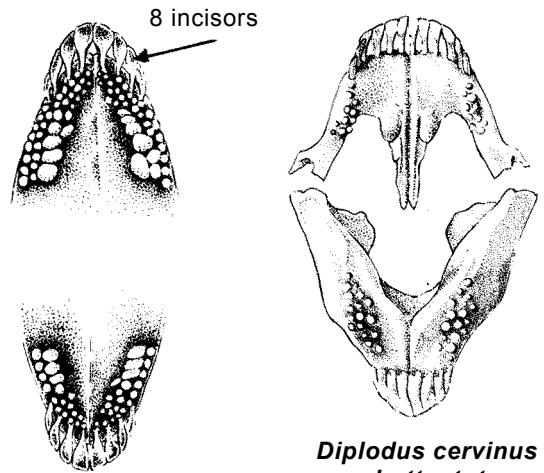
Throughout the area, mainly around rocky reefs, but not extensively fished.

CATCHES, FISHING GEAR AND FORMS OF UTILIZATION:

Separate statistics are not reported for this species.

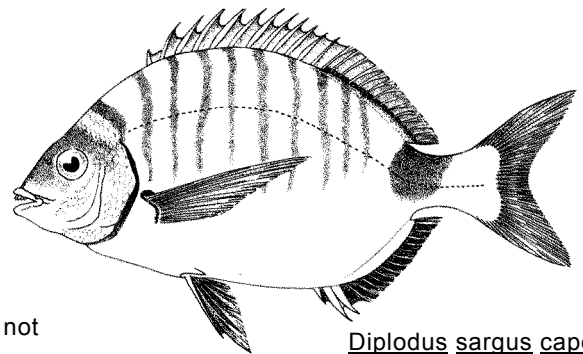
Caught with hook and line, mainly by anglers from the shore, occasionally with trawlers.

Marketed fresh.

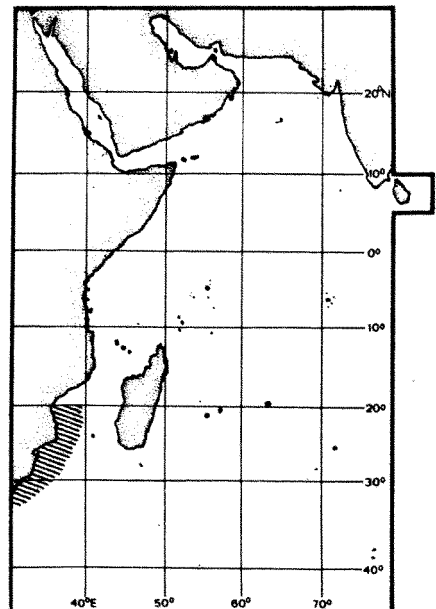


Diplodus sargus capensis

upper and lower jaw



Diplodus sargus capensis



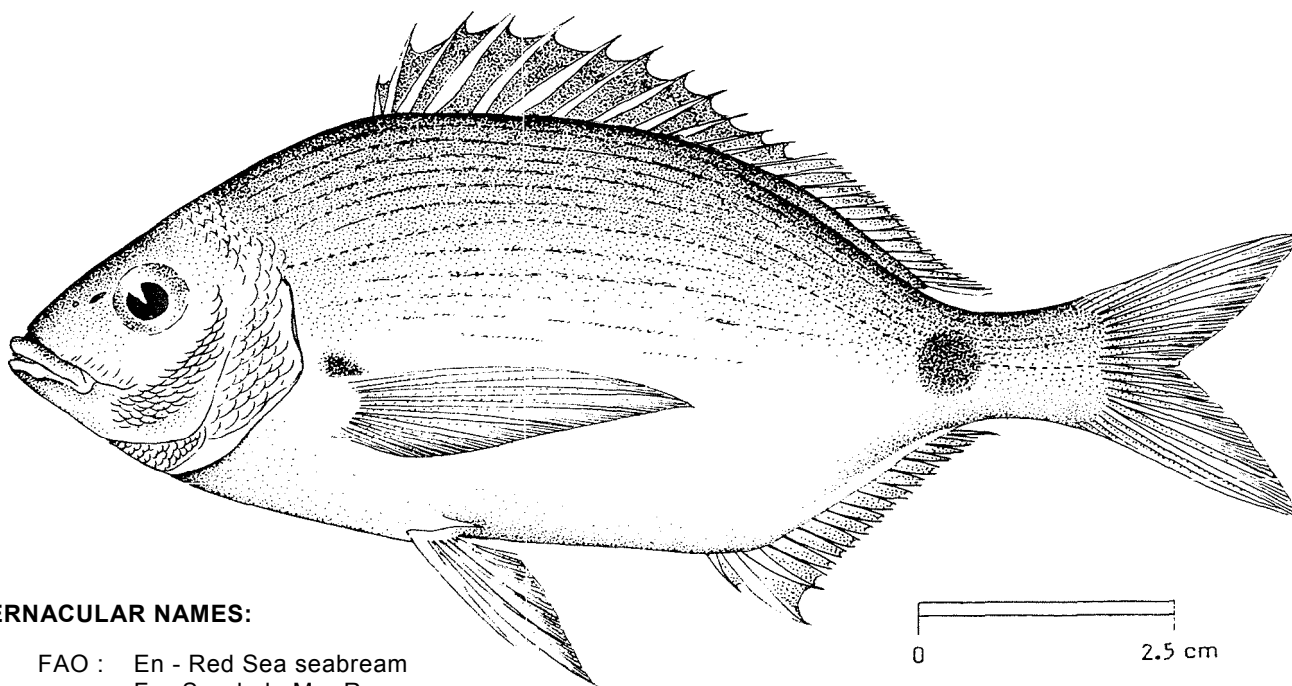
FAO SPECIES IDENTIFICATION SHEETS

FAMILY: SPARIDAE

FISHING AREA 51
(W. Indian Ocean)

Diplodus noct ([Ehrenberg MS] Valenciennes, 1830)

OTHER SCIENTIFIC NAMES STILL IN USE: None



VERNACULAR NAMES:

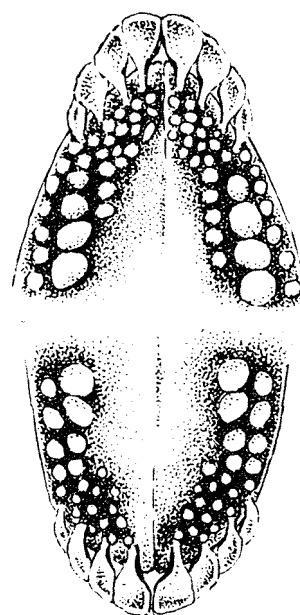
FAO : En - Red Sea seabream
Fr - Sar de la Mer Rouge
Sp - Sargo del Mar Rojo

NATIONAL:

DISTINCTIVE CHARACTERS:

Body oval, rather elongate, compressed, its depth 2.25 to 2.6 times in standard length. Head profile steep and straight from upper lip to nape and smoothly convex to dorsal fin origin; snout rather pointed; mouth rather protrusible; the maxilla scarcely reaching to below anterior eye margin; lips rather thick; both jaws with normally 8 broad, incisor-like teeth anteriorly, compressed and forwardly inclined (rarely 7 to 10 in upper jaw, 7 in lower jaw); laterally, 2 or 3 rows of rounded molar-like teeth (the 2nd row largest) and smaller ones just behind the incisor-like teeth; gillrakers 13 or 14 (rarely 12) on lower limb of first arch. Dorsal fin with 10 to 13 (usually 12) spines and 12 to 15 (usually 13 or 14) soft rays; anal fin with 3 spines and 12 to 14 (usually 13) soft rays; pectoral fins long, reaching anal spines; caudal fin forked. Scales moderate, 60 to 69 in lateral line, 6 or 7 between lateral line and 4th dorsal spine; a low scaly sheath at base of dorsal and anal fins.

Colour: silvery grey, becoming paler ventrally. Longitudinal dark streaks along rows of scales, more conspicuous on midlateral region of sides; a dark blotch located on lateral line, on anterior part of caudal peduncle (often obscured with age); a dark spot on pectoral fin axils; vertical fins grey with a yellowish tinge; pectoral and pelvic fins pale. Young individuals with 8 or 9 narrow, transverse, dark bars.

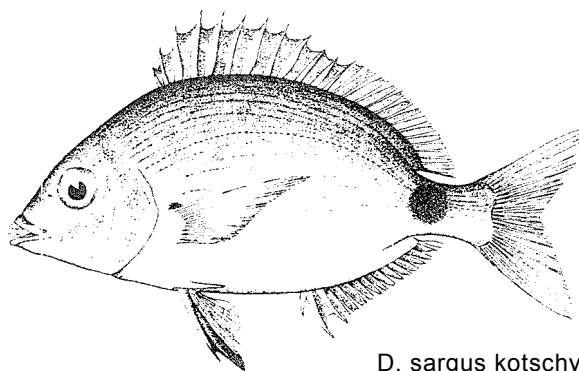


upper and lower jaw

DISTINGUISHING CHARACTERS OF SIMILAR SPECIES OCCURRING IN THE AREA:

Other subspecies of *Diplodus sargus* (until now not known to overlap with the geographical range of *D. noct*): body rather deep, 2 to 2.23 times in standard length: gillrakers 8 to 10 on lower limb of first arch.

The combination of characters described above, particularly the dark blotch on anterior part of caudal peduncle, easily separates this species from the other sparids within its range.



D. sargus kotschyi

SIZE:

Maximum: 30 cm; common to 15 cm.

GEOGRAPHICAL DISTRIBUTION AND BEHAVIOUR:

Apparently endemic to the Red Sea.

Very common, especially above sandy bottoms, around coral reefs and in shallow coastal waters. The young may form aggregations.

Feeds on algae and small invertebrates.

PRESENT FISHING GROUNDS:

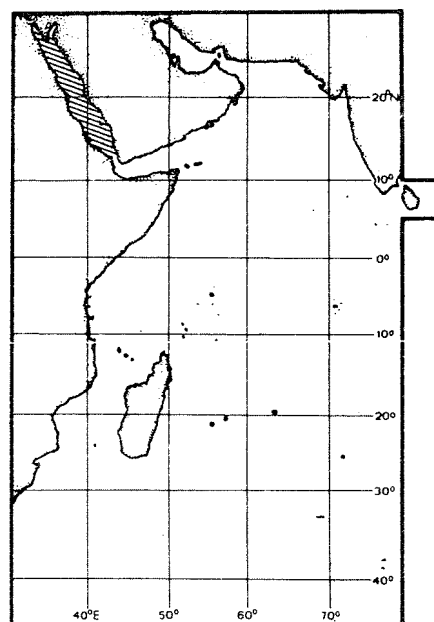
Throughout its range.

CATCHES, FISHING GEAR AND FORMS OF UTILIZATION:

Separate statistics are not reported for this subspecies.

Caught mainly with handlines, also with trawls, trammelnets and gillnets.

Marketed whole, fresh.



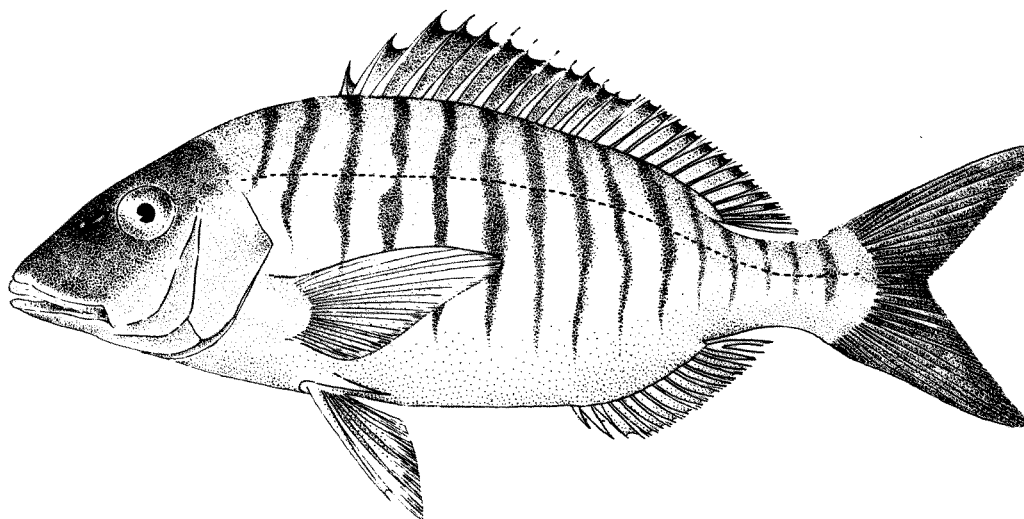
FAO SPECIES IDENTIFICATION SHEETS

FAMILY: SPARIDAE

FISHING AREA 51
(W. Indian Ocean)

Lithognathus mormyrus (Linné, 1758)

OTHER SCIENTIFIC NAMES STILL IN USE: None



VERNACULAR NAMES:

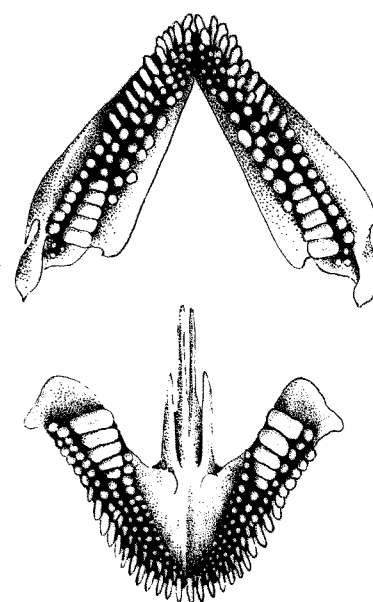
- FAO : En - Striped seabream
- Fr - Marbré
- Sp - Herrera

NATIONAL:

DISTINCTIVE CHARACTERS:

Body oblong and compressed. Head profile from upper lip to dorsal fin origin smoothly convex, eye small; snout elongate and pointed; mouth protractile, low, subhorizontal, reaching to about level of anterior eye margin; anterior teeth small, set in bands, followed by 3 to 6 rows of molars in upper, and 2 to 4 rows in lower jaw; gillrakers 15 to 17 on lower limb of first arch. Dorsal fin single with 11 or 12 spines and 11 or 12 soft rays; anal fin with 3 slender spines and 10 to 13 soft rays; pectoral fins short, not reaching to beyond level of anus; caudal fin forked. Scales rather small, 59 to 65 in lateral line; scalation on top of head not extending forward beyond level of posterior eye margin; preopercle flange naked; soft dorsal and anal fins with a very low, basal scaly sheath.

Colour: body grey silver with a pinkish sheen; 14 to 17 distinct, narrow dark crossbars always present between eye and caudal fin origin, fading out before reaching the belly or any part of the ventral profile; snout and interorbital space darkish; dorsal and caudal fins greenish yellow with dark margins, anal fin deep orange except for lighter colour on margin and last 2 rays, pelvic spine yellow, centre of fin deep orange and remaining edges light; pectoral fins darker above, olive.

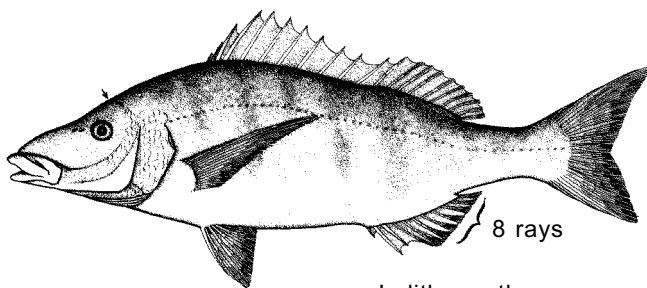


upper and lower jaws

DISTINGUISHING CHARACTERS OF SIMILAR SPECIES OCCURRING IN THE AREA:

Lithognathus lithognathus (endemic off South Africa, overlapping L. mormyrus only off Natal): 7 wide, rather indistinct, crossbars (14 or 15 in L. mormyrus), 8 anal fin rays (10 to 13 in L. mormyrus).

Diplodus species: incisor teeth at front of both jaws.



L. lithognathus

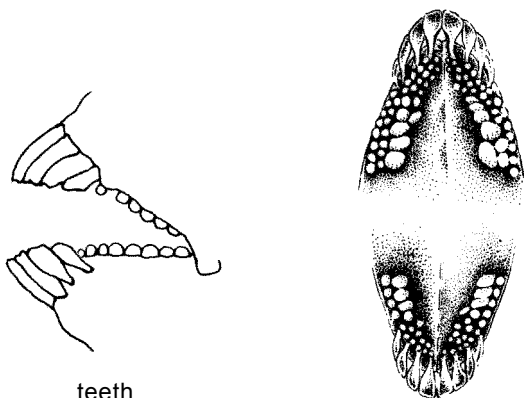
SIZE:

Maximum: 55 cm: common between 20 and 25 cm.

GEOGRAPHICAL DISTRIBUTION AND BEHAVIOUR:

In the area from central Mozambique to Natal (South Africa). Elsewhere along the coasts of South Africa, West Africa and Europe (up to the Bay of Biscay); also in the Mediterranean.

Lives over sandy or mud-sandy bottoms as well as in seagrass in shallow coastal areas down to 30 m depth, enters estuaries.



teeth
lateral view upper and lower jaws
Diplodus sargus capensis

PRESENT FISHING GROUNDS:

Coastal waters and river mouths.

CATCHES, FISHING GEAR AND FORMS OF UTILIZATION:

Separate statistics are not reported for this species.

Caught with line gear, using small hooks, in stake traps and beach seines and with bottom trawls.

Marketed fresh and sometimes dried.

