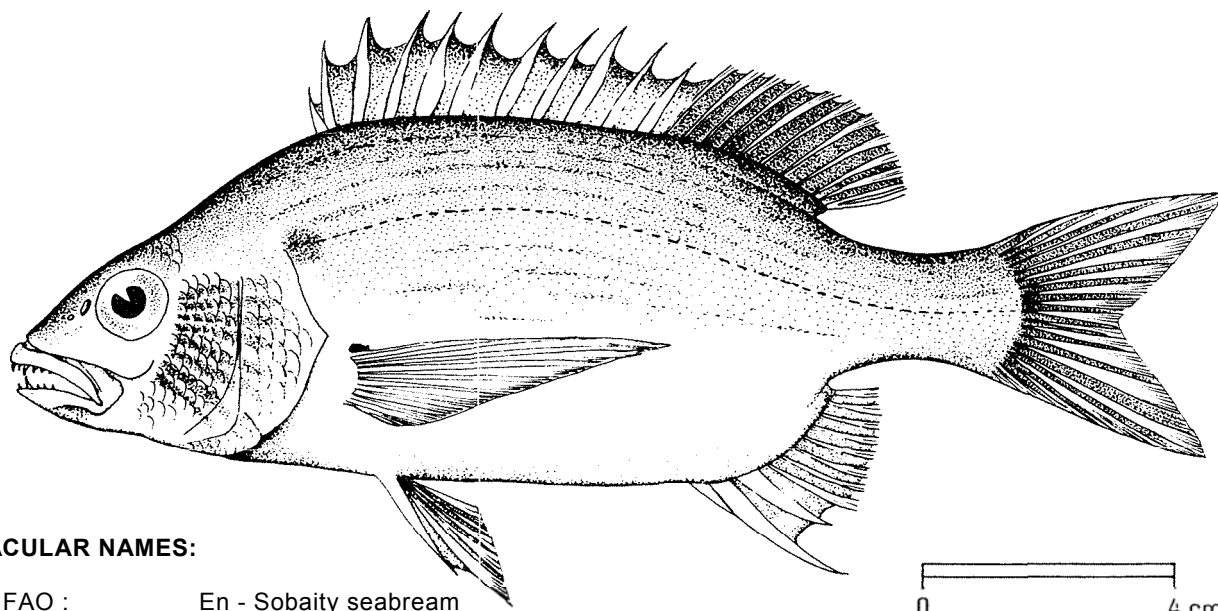


FAO SPECIES IDENTIFICATION SHEETS

FAMILY: SPARIDAE

FISHING AREA 51
(W. Indian Ocean)Sparidentex hasta (Valenciennes, 1830)OTHER SCIENTIFIC NAMES STILL IN USE: Chrysophrys cuvieri Day, 1875
Acanthopagrus cuvieri (Day, 1875)

VERNACULAR NAMES:

FAO : En - Sobaity seabream
Fr - Spare sobaity
Sp - Sargo sobaity

NATIONAL

DISTINCTIVE CHARACTERS:

Body elongate, compressed, its depth about 2.5 to 3 times in standard length. Head large, slightly shorter than body depth. Head profile almost straight from tip of snout to nape, and regularly convex to origin of dorsal fin; eye moderate, its diameter less than snout length; suborbital depth shallow; posterior nostril oval; mouth large; the maxilla exposed posteriorly, ending at: mideye level; at front of each jaw, 6 enlarged, fang-like, conical teeth; gillrakers lanceolate, 9 on lower limb of first arch. Dorsal fin with 11 spines appearing alternately strong and weak on each side) and 11 or 12 rays; anal fin with 3 spines and 8 or 9 rays; pectoral fins equal to, or longer than, head; caudal fin forked. Scales moderate, 47 to 49 in lateral line; scalation on head not reaching beyond level of vertical eye diameter; preopercle flange naked; soft dorsal and anal fins with a basal scaly sheath.

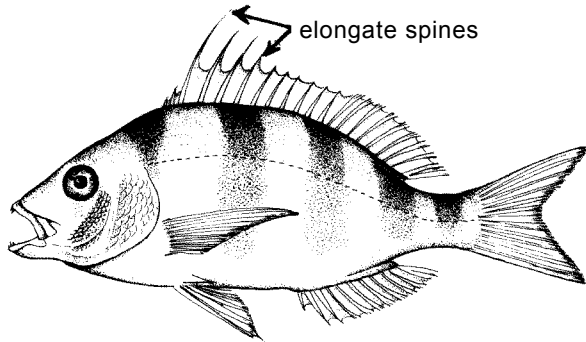
Colour: silvery, dark grey on back, paler to whitish downward; scales with dark spots forming 10 to 12 dark lines along sides of body, more conspicuous above lateral line; often dark mottlings on sides forming crossbars; a dark, diffuse blotch at origin of lateral line; a small, dark spot on the pectoral fin axils; about 8 radiating lines from eye across cheek; dorsal spines silvery, membrane with a black margin; soft dorsal and caudal fins dark grey, anal and pelvic fins grey, with a yellow tinge; pectoral fins light grey.

DISTINGUISHING CHARACTERS OF SIMILAR SPECIES OCCURRING IN THE AREA:

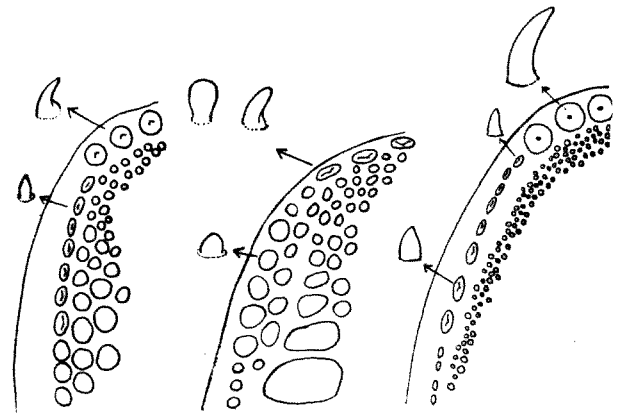
Acanthopagrus species: inner series of teeth molariform; body deeper, its depth about twice in standard length (2.5 to 3 times in S. hasta).

Rhabdosargus sarba: dorsal fin hyaline at base; inner series of teeth molariform; anal fin rays 11 (8 or 9 in S. hasta).

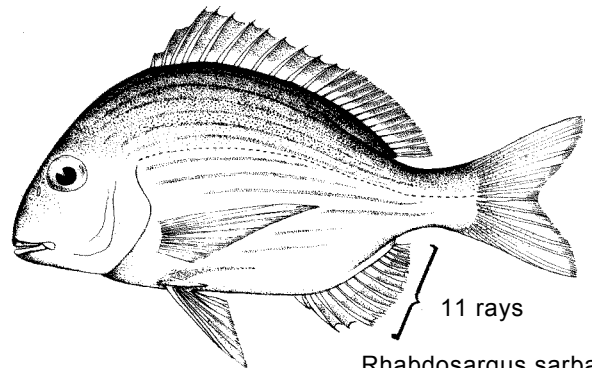
Cheimerius nufar: 3rd to 7th dorsal spines elongate (no spines elongated in S. hasta).



Cheimerius nufar



Acanthopagrus Rhabdosargus Sparidentex
right half of upper jaw



Rhabdosargus sarba

SIZE:

Maximum: 37 cm; common to 20 cm.

GEOGRAPHICAL DISTRIBUTION AND BEHAVIOUR:

The "Gulf" and coasts of India, from shallow coastal waters to moderate depths.

Carnivorous.

PRESENT FISHING GROUNDS:

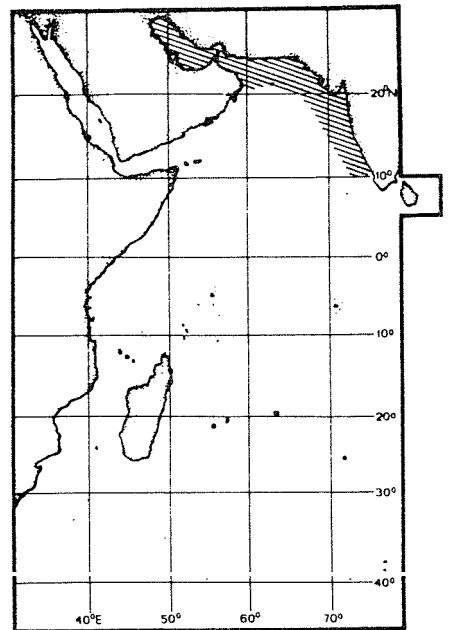
Coastal waters throughout its range.

CATCHES, FISHING GEAR AND FORMS OF UTILIZATION:

Separate statistics are not reported for this species.

Caught with bottom trawls and on line gear; mainly exploited by artisanal fisheries.

Marketed fresh.

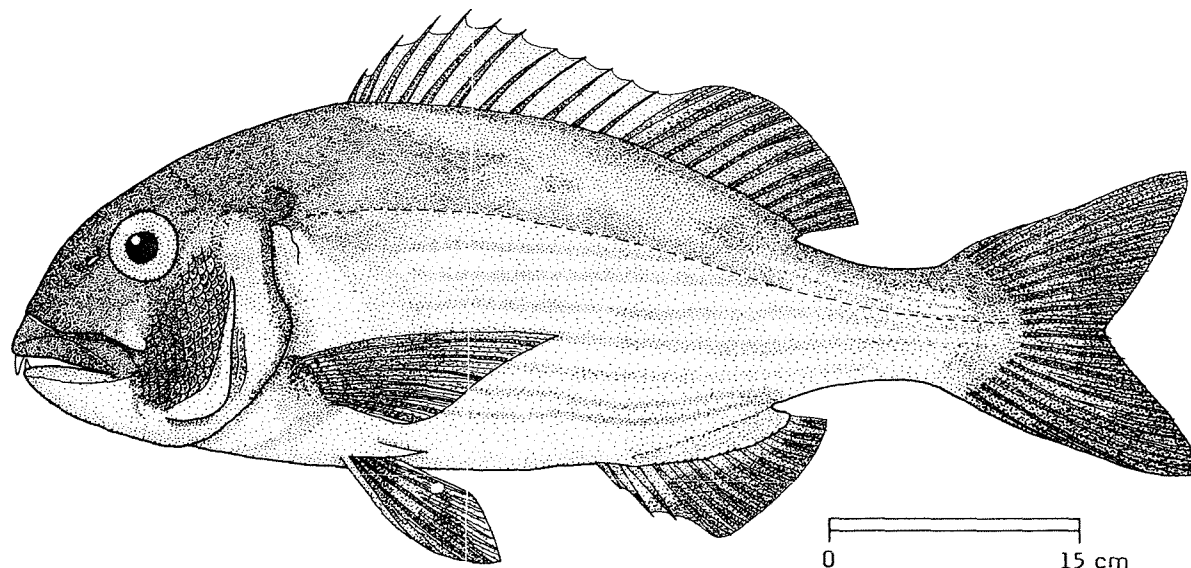


FAO SPECIES IDENTIFICATION SHEETS

FAMILY: SPARIDAE

FISHING AREA 51
(W. Indian Ocean)*Sparodon durbanensis* (Castelnau, 1861)

OTHER SCIENTIFIC NAMES STILL IN USE : None



VERNACULAR NAMES:

FAO : En - Musselcracker seabream
 Fr - Spare broyeur
 Sp - Sargo berberechero

NATIONAL:

DISTINCTIVE CHARACTERS:

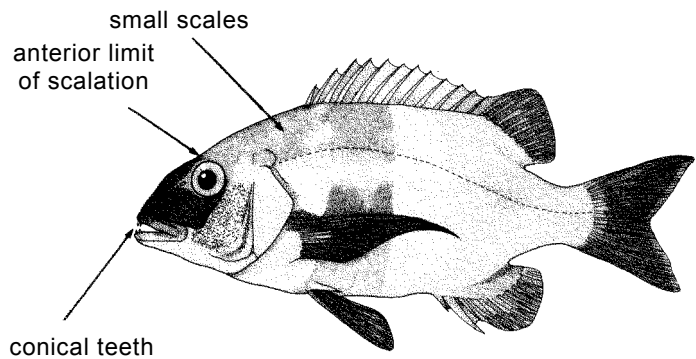
Body elongate-oval. Head large, becoming heavier with age, its profile gently convex in young, interorbital space wide; eye small in large individuals; mouth fairly large, the maxilla reaching to below middle of eye; lower jaw shorter than upper; upper lip very thick at snout tip; at front of each jaw, 4 large incisors, the middle pair particularly developed and curved; large molars in 3 or more series, the inner hinder one largest; gillrakers 7 or 8 on lower limb of first arch. Dorsal fin with 11 slender spines and 11 to 13 soft rays; anal fin with 3 spines (3rd spine longer than 2nd) and 10 soft rays; pectoral fins shorter than head, not reaching to above anal fin origin; caudal fin forked, lobes rounded in young, becoming pointed in adults. Scales moderate, 58 to 61 in lateral line; scalation on top of head not reaching to level of vertical eye diameter; preopercle flange naked; soft dorsal and anal fins scaly at base, with a vestigial sheath.

Colour: predominantly silver or silvery blue, lighter below, with chin abruptly white spreading to chest and belly; soft dorsal, anal, caudal and parts of pelvic fins dusky.

DISTINGUISHING CHARACTERS OF SIMILAR SPECIES OCCURRING IN THE AREA:

Cymatoceps nasutus: 4 large conical teeth in upper jaw, 6 in lower, (4 incisors in each jaw S. durbanensis); scales above lateral line much smaller than those below (about equal in S. durbanensis); scalation on the top of head reaching to beyond anterior margin of eye (not reaching to middle of eye in S. durbanensis).

The middle pair of greatly enlarged incisors, and the overlapping upper jaw, easily separate this species from any other sparid occurring in the area.



SIZE:

Maximum: 120 cm; common from 60 to 80 cm.

Cymatoceps nasutus

GEOGRAPHICAL DISTRIBUTION AND BEHAVIOUR:

In the area, restricted to South Africa (Natal); southward extending to the Cape of Good Hope. Occurs in shallow coastal waters, mainly off rocky shores down to 80 m depth. Young appear in tidal pools along the southern and southeastern coasts of South Africa, from October to January.

Feeds mainly on molluscs, ground with its large powerful, molars.

PRESENT FISHING GROUNDS:

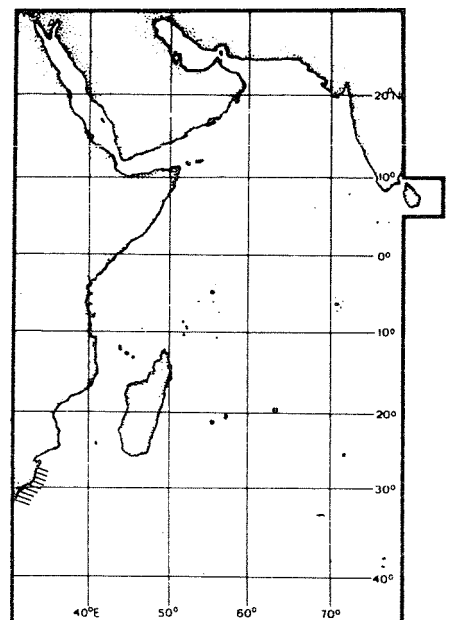
Shallow rocky areas throughout its range.

CATCHES, FISHING GEAR AND FORMS OF UTILIZATION:

Separate statistics are not reported for this species.

Caught mainly with lines. A famous sport fish.

Marketed fresh; flesh esteemed.



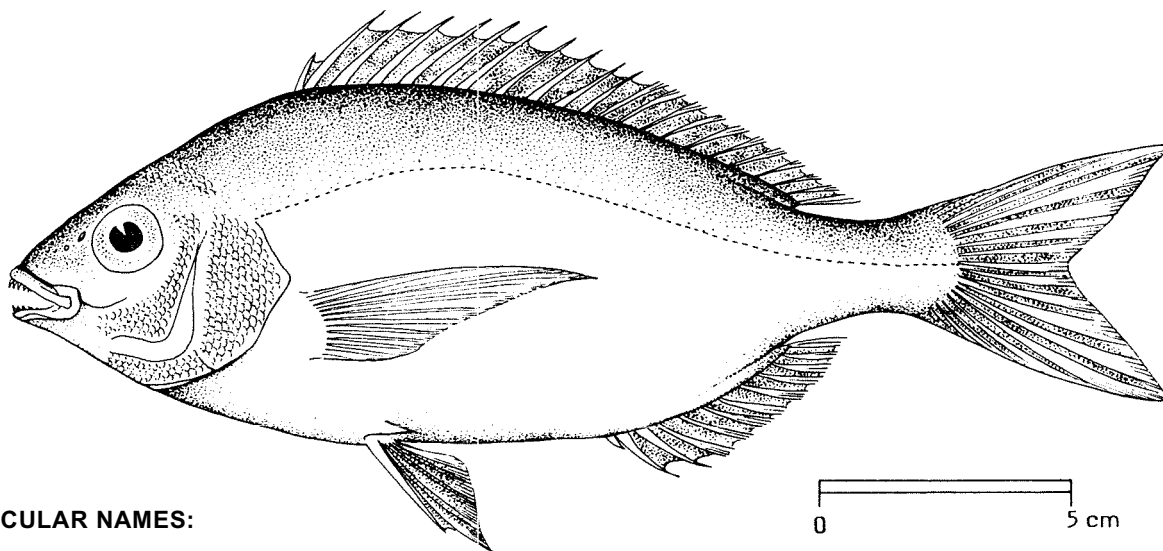
FAO SPECIES IDENTIFICATION SHEETS

FAMILY: SPARIDAE

FISHING AREA 51
(W. Indian Ocean)

<i>Spondyliosorna emarginatum</i> (Cuvier, 1830)
--

OTHER SCIENTIFIC NAMES STILL IN USE: None



VERNACULAR NAMES:

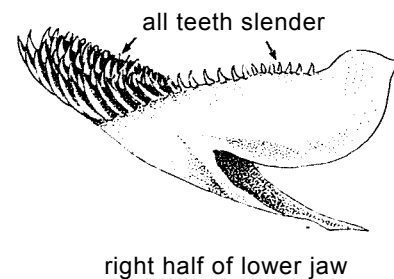
FAO : En - Steentjie seabream
 Fr - Dorade australe
 Sp - Chopa austral

NATIONAL:

DISTINCTIVE CHARACTERS:

Body moderate, its depth 2 to 2.6 times in standard length. Head profile almost straight from upper lip to dorsal fin origin, slightly convex in larger specimens; mouth small, the maxilla ending before, or just at, level of anterior eye margin; suborbital space shallow, its lower margin notched; eye moderate, about 3 to 3.5 times in head length; teeth narrow, lanceolate slender, in 4 to 6 rows in each jaw, the outer row largest; gillrakers 15 to 18 on lower limb of first arch. Dorsal fin with 11 slender spines and 11 to 13 soft rays; anal fin with 3 spines (the 3rd longest) and 10 rays; pectoral fins reaching almost to above anal fin origin; caudal fin forked. Scales very small, 80 to 92 in lateral line; preopercle flange naked; scalation on top of head extending forward to middle of eye; a low scaly sheath at base of soft dorsal and anal fins.

Colour: brownish or dull grey, scale rows above lateral line with darker lines, those below with narrow grey and yellow lines; dorsal and anal fins dusky with greenish membranes (spinous dorsal mottled dusky); caudal and pectoral fins dusky, pelvics dull golden, their inner rays light.



DISTINGUISHING CHARACTERS OF SIMILAR SPECIES OCCURRING IN THE AREA:

Sarpa salpa: pectoral fins short, reaching to about halfway above anal fin origin: a single series of incisors, the upper notched at edges (several series in S. emarginatum).

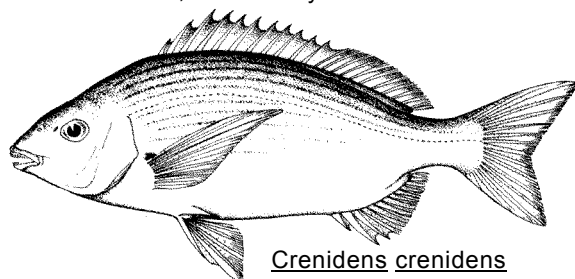
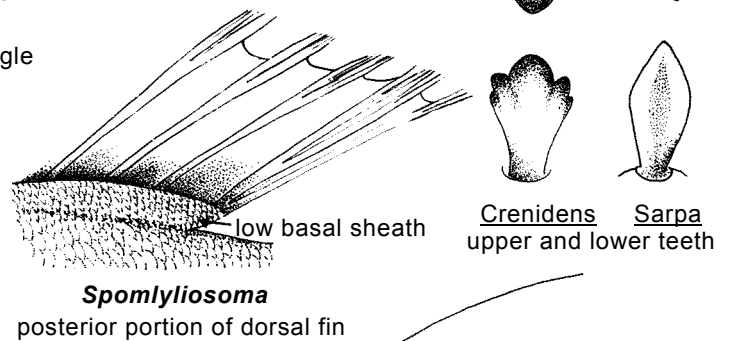
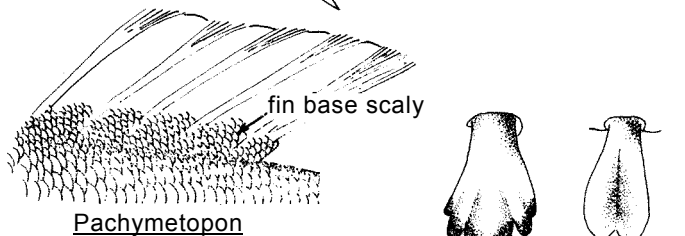
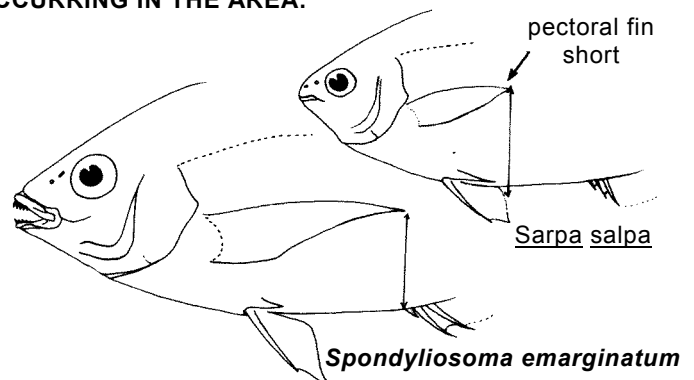
Crenidens crenidens: outer series of teeth movable, their edges crenulate and darker (teeth slender, lanceolate in S. emarginatum).

Pachymetopon species: bases of soft dorsal and anal fins scaly (a low scaly sheath in S. emarginatum),

Other species of Sparidae: molariform teeth present and/or a distinct group of enlarged teeth in front of jaws.

Pomadasys olivaceus (Pomadasyidae: preopercle margin serrate; scales present between eye and mouth; dorsal fin with 12 spines and 15 to 17 rays (11 spines and 11 to 13 rays in S. emarginatum); its spinous portion greatly notched in front of soft portion; anal fin rays 11 or 12 (10 in S. emarginatum); 2nd anal spine much longer and stronger than 3rd.

Pterosmaris axillaris (Emmelichthyidae): a single row of fine teeth; anal fin rays 11 or 12.



Crenidens crenidens

SIZE:

Maximum: 45 cm; common from 20 to 30 cm.

GEOGRAPHICAL DISTRIBUTION AND BEHAVIOUR:

In the area, South Africa to Mozambique and southern coasts of Madagascar.

Inhabits offshore waters down to 60 m depth, near rocky grounds; enters estuaries where it lives among the weeds.

Feeds on algae and small crustaceans.

PRESENT FISHING GROUNDS:

Throughout its range.

CATCHES, FISHING GEAR AND FORMS OF UTILIZATION:

Separate statistics are not reported for this species.

Caught mainly in trawls; exploited by artisanal fisheries and nets

Used as bait.

