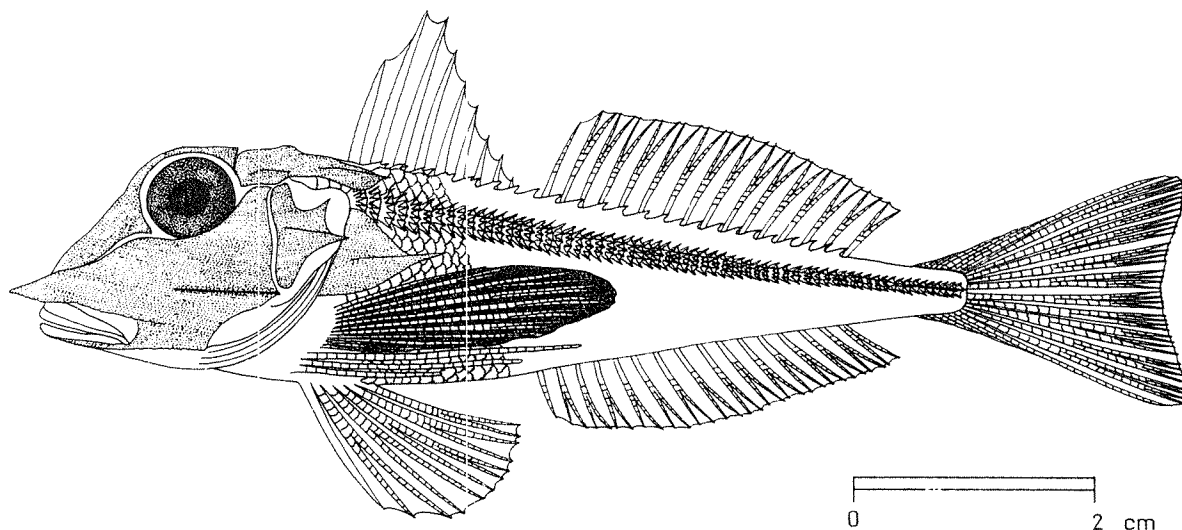


FAO SPECIES IDENTIFICATION SHEETS

FAMILY: TRIGLIDAE

FISHING AREA 51
(W. Indian Ocean)Lepidotrigla multispinosus Smith, 1934

OTHER SCIENTIFIC NAMES STILL IN USE: None



VERNACULAR NAMES:

FAO : En - Spiny gurnard
 Fr - Grondin épineux
 Sp - Cabete espinudo

NATIONAL:

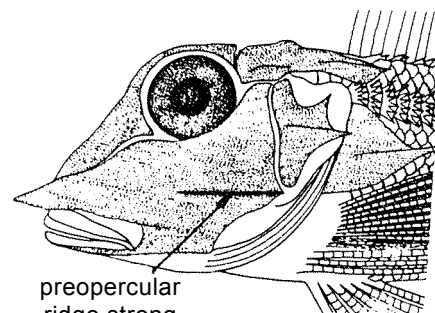
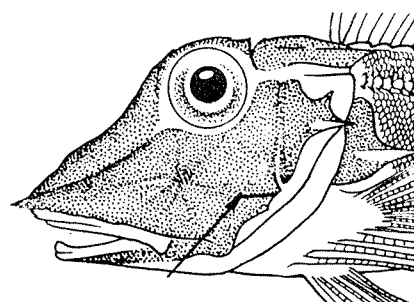
DISTINCTIVE CHARACTERS:

Head large, triangular, with many ridges and spines, and a fissure on top, behind eyes (occipital groove); rostral process forming a curved projection with no prominent spines; preopercular ridge strong. Bases of first and second dorsal fins with small plates bearing strong lateral spines. Body scales large, fewer than 70 in lateral line.

Colour: mostly red.

DISTINGUISHING CHARACTERS OF SIMILAR SPECIES OCCURRING IN THE AREA:

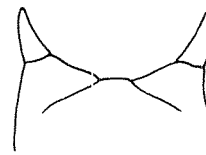
Lepidotrigla alcocki: preopercular ridge weak or absent.

*L. multispinosus*preopercular ridge
weak or absent*L. alcocki*

Other Lepidotrigla species: rostral process projecting as a single pair of blade-like spines or several prominent spines.

Chelidonichthys species: no fissure or occipital groove behind eyes.

Pterygotrigla species: broad, flattened bony plates at base of dorsal fin, but no plates or spines along base of second dorsal fin.



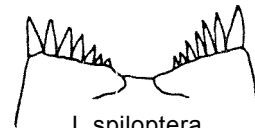
L. bispinosa



L. alcocki



L. multispinosus



L. spiloptera

rostral process
(dorsal view)

SIZE:

Maximum: small, 14 cm.

GEOGRAPHICAL DISTRIBUTION AND BEHAVIOUR:

Along the coast of East Africa and Kenya southward to Mozambique.

Found at depths between 230 and 295 m.

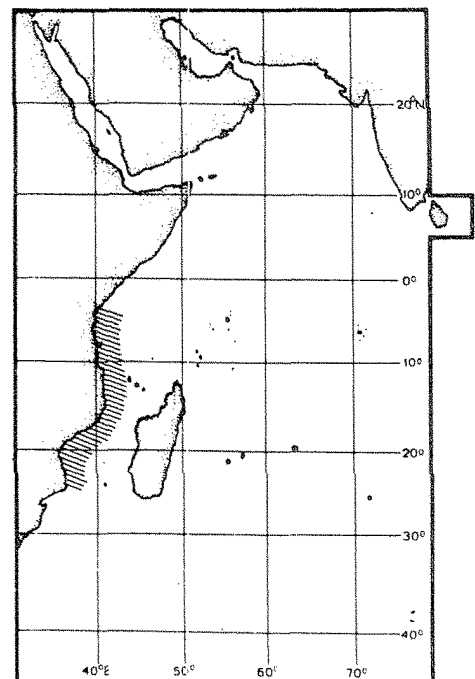
PRESENT FISHING GROUNDS:

No special fishery.

CATCHES, FISHING GEAR AND FORMS OF UTILIZATION:

Separate statistics are not reported for this species.

Probably taken as bycatch with bottom trawls.



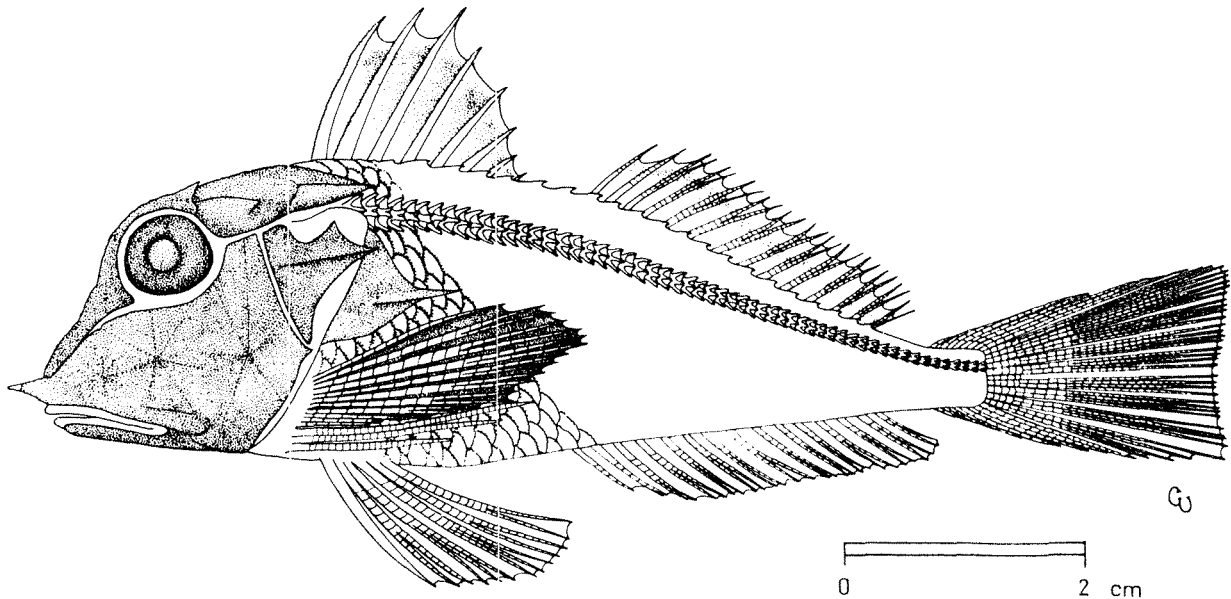
FAO SPECIES IDENTIFICATION SHEETS

FAMILY: TRIGLIDAE

FISHING AREA 51
(W. Indian Ocean)

Lepidotrigla omanensis Regan, 1905

OTHER SCIENTIFIC NAMES STILL IN USE : incorrectly synonymized with *Lepidotrigla bispinosa*



VERNACULAR NAMES:

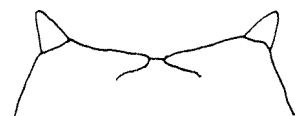
- FAO: En - Oman gurnard
- Fr - Grondin d'Oman
- Sp - Cabete de Ornân

NATIONAL:

DISTINCTIVE CHARACTERS:

Head large, triangular, with many ridges and spines, and a fissure on top behind eyes (occipital groove); head length 38.2 to 43.1% of standard length; interorbital width 7.3 to 8.9% of standard length; rostral process with a single pair of prominent, blade like spines. Bases of first and second dorsal fins with small plates bearing strong lateral spines. Body scales large, fewer than 70 in lateral line; scales firmly attached, in even, distinct rows; belly fully scaled; 10 to 14 (usually 12. scale rows below lateral line.

Colour: mostly red.



rostral process
(dorsal view)

DISTINGUISHING CHARACTERS OF SIMILAR SPECIES OCCURRING IN THE AREA:

Lepidotrigla bispinosa: 15 to 19 scale rows below the lateral line 10 to 14 in L. omanensis; interorbital width 4.8 to 8.2% of standard length, head length 31.5 to 41.7% of standard length (7.3 to 8.9 and 38.2 to 43.1%, respectively, in L. omanensis).

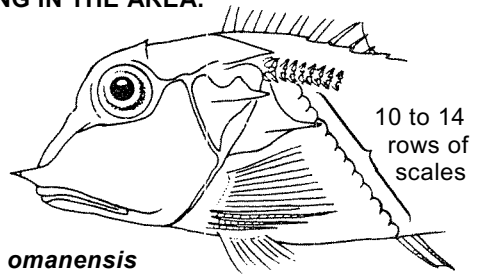
L. bentuviai: belly not fully scaled.

L. riggsi: scales loosely attached in uneven, indistinct rows.

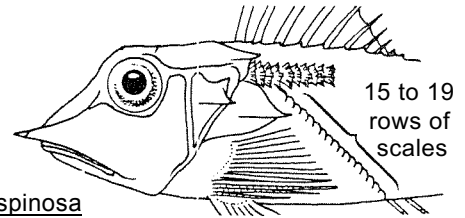
Other Lepidotrigla species: rostral process either with more than one pair of prominent spines, the largest not much larger than the other spines; or forming a pair of curved projections with no prominent spines.

Chelidonichthys species: no fissure or occipital groove behind eyes.

Pterygotrigla: broad, flattened bony plates present at base of first dorsal fin, but no plates or spines along base of second dorsal fin.

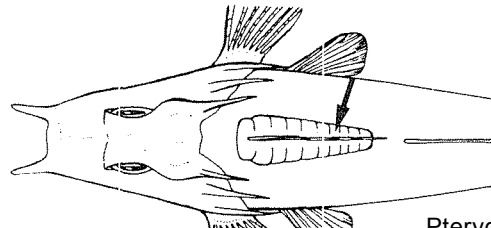


L. omanensis

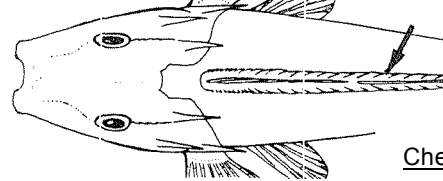


L. bispinosa

(schematic, pectoral and pelvic fins incomplete)



Pterygotrigla



Chelidonichthys

dorsal view (strongly schematic) **Lepidotrigla**

SIZE:

Maximum: small, 12.5 cm.

GEOGRAPHICAL DISTRIBUTION AND BEHAVIOUR:

Shores of the Arabian Sea from the mouth of the Red Sea to South India, but absent from the "Gulf" and Red Sea.

Found at depths between 56 to 220 m.

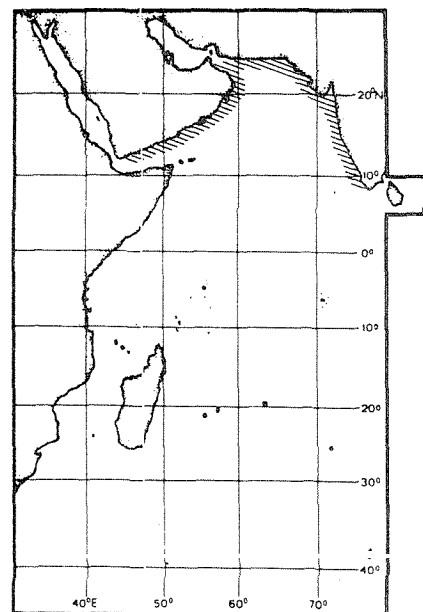
PRESENT FISHING GROUNDS:

No special fishery; taken as bycatch in trawling operations.

CATCHES, FISHING GEAR AND FORMS OF UTILIZATION:

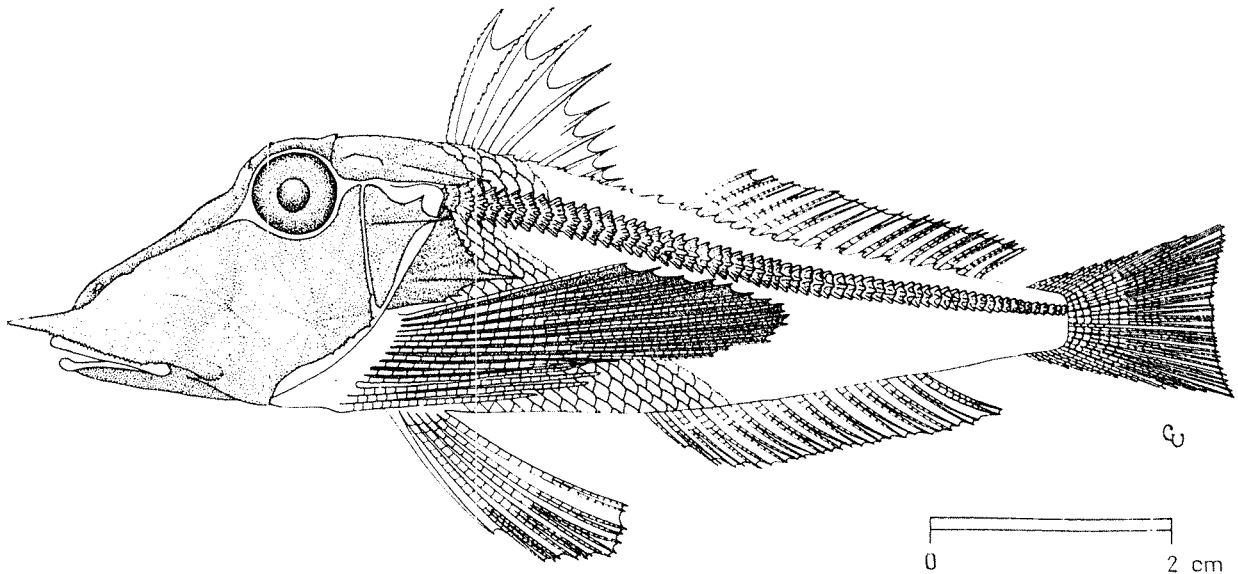
Separate statistics are not reported for this species.

Caught mainly with bottom trawls.



FAO SPECIES IDENTIFICATION SHEETS

FAMILY: TRIGLIDAE

FISHING AREA 51
(W. Indian Ocean)Lepidotrigla riggsi Richards & Saksena, 1977OTHER SCIENTIFIC NAMES STILL IN USE : Lepidotrigla longipinnis Alcock, 1890 (a name previously used in the genus)

VERNACULAR NAMES:

FAO : En - Rigg's gurnard
 Fr - Grondin grée
 Sp - Cabete aletón

NATIONAL:

DISTINCTIVE CHARACTERS:

Head large, triangular, with many ridges and spines, and a fissure on top behind eyes (occipital groove); rostral process with a single pair of prominent, blade-like spines which is much longer than the other rostral spines. Bases of first and second dorsal fins with small plates bearing strong lateral spines. Body scales large, fewer than 70 in lateral line; belly fully scaled; scales very loosely attached, in uneven, indistinct rows.

Colour: mostly red.

DISTINGUISHING CHARACTERS OF SIMILAR SPECIES OCCURRING IN THE AREA:

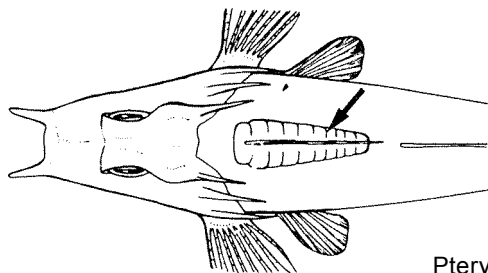
Lepidotrigla omanensis and L. bispinosa: scales firmly attached, in even distinct rows.

L. bentuviai: belly only partially scaled.

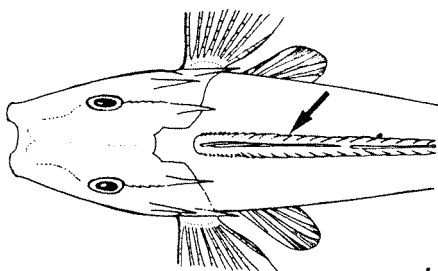
Other Lepidotrigla species: rostral process either with more than one pair of prominent spines, the largest not much larger than the other spines, or forming a pair of curved projections without prominent spines.

Chelidonichthys species: no fissure or occipital groove behind eyes.

Pterygotrigla species: broad, flattened bony plates at base of dorsal fin, but no plates or spines along base of second dorsal fin.



Pterygotrigla

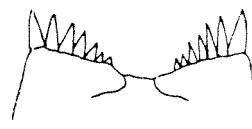


Lepidotrigla

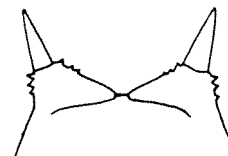
dorsal view (strongly schematic)



L. multispinosus



L. spiloptera



L. riggsi

rostral process
(dorsal view)

SIZE:

Maximum: small, 12.5 cm.

GEOGRAPHICAL DISTRIBUTION AND BEHAVIOUR:

Known from a few localities along the coast of India and the Andaman Sea in depths of 90 to 96 m.

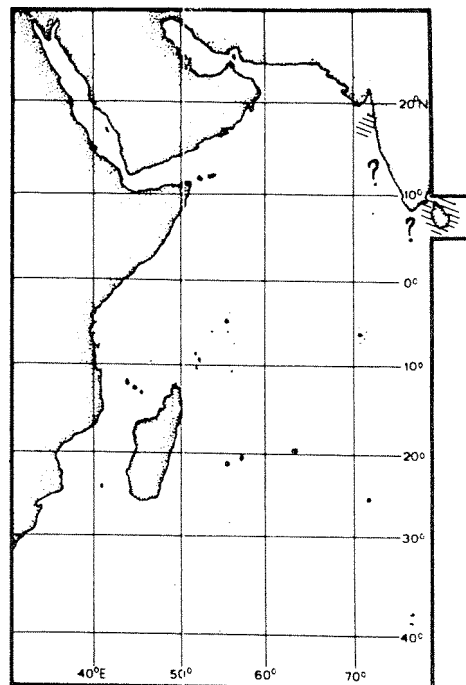
PRESENT FISHING GROUNDS:

No special fishery.

CATCHES, FISHING GEAR AND FORMS OF UTILIZATION:

Separate statistics are not reported for this species.

Probably taken in trawls as bycatch.

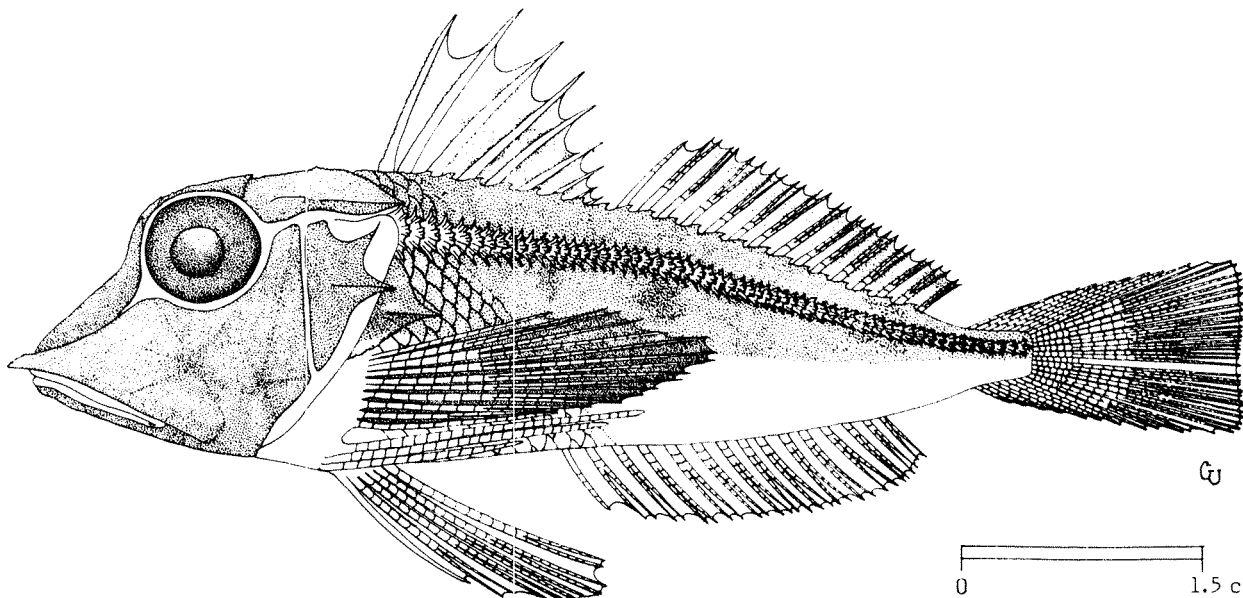


FAO SPECIES IDENTIFICATION SHEETS

FAMILY: TRIGLIDAE

FISHING AREA 51
(W. Indian Ocean)*Lepidotrigla spiloptera* Gunther, 1880

OTHER SCIENTIFIC NAMES STILL IN USE : None



VERNACULAR NAMES:

FAO : En - Spottedwing gurnard
 Fr - Grondin aile tacheté
 Sp - Cabete aleta

NATIONAL:

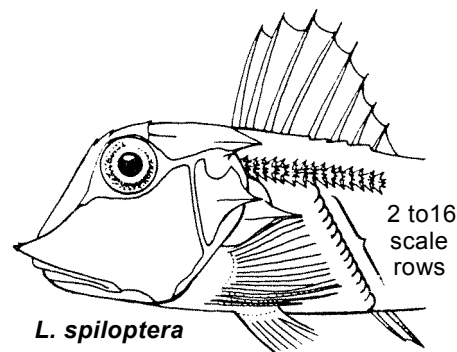
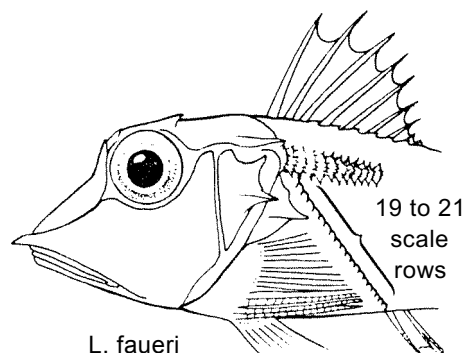
DISTINCTIVE CHARACTERS:

Head large, triangular, with many ridges and spines, and a fissure on top, behind eyes (occipital groove); rostral process with several prominent spines. Bases of first and second dorsal fins with small plates bearing strong lateral spines. Bony scales large, fewer than 70 in lateral line; scale rows below lateral line 19 to 21.

Colour: mostly red with definite silvery white breast, belly and lower flanks.

DISTINGUISHING CHARACTERS OF SIMILAR SPECIES OCCURRING IN THE AREA:

Lepidotrigla faueri: scales larger; 12 to 16 scale rows below lateral line (19 to 21 in *L. spiloptera*).



schematic (pectoral and pelvic fins incomplete)

Other Lepidotrigla species: rostral process either a pair of curved projections with no prominent spines, or with a single pair of prominent, blade-like spines much larger than the others.

Chelidonichthys species: no fissure or occipital groove behind eyes.

Pterygotrigla species: broad, flattened bony plates at base of dorsal fin, but no plates or spines along base of second dorsal fin.

SIZE:

Maximum: small, 10 cm.

GEOGRAPHICAL DISTRIBUTION AND BEHAVIOUR:

Sporadically distributed over a wide area, with museum specimens from Red Sea, Somalia coast and Zanzibar. Also known from the Bay of Bengal, Arafura Sea and the Philippines. Reports from Japan are based on a different species.

Found at depths between 76 and 256 m.

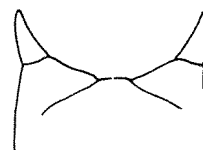
PRESENT FISHING GROUNDS:

No special fishery.

CATCHES, FISHING GEAR AND FORMS OF UTILIZATION:

Separate statistics are not reported for this species.

Probably taken as bycatch with bottom trawls.



L. bispinosa



L. alcocki



L. spiloptera
rostral process
(dorsal view)

