

FAO SPECIES IDENTIFICATION SHEETS

FAMILY: SCYLLARIDAE

FISHING AREA 51
(W. Indian Ocean)*Scyllarides elisabethae* (Ortmann, 1894)

OTHER SCIENTIFIC NAMES STILL IN USE: None

VERNACULAR NAMES:

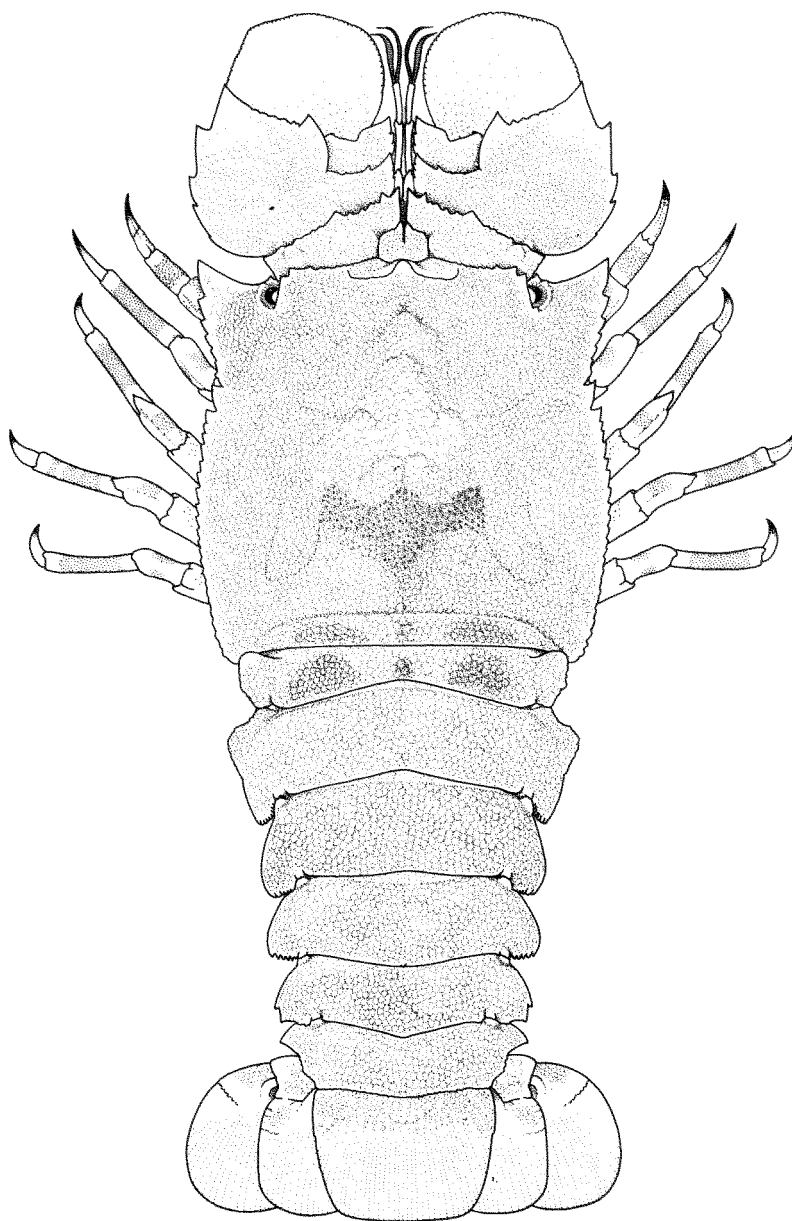
FAO : En - Cape locust lobster
Fr - Cigale du Cap
Sp - Cigarro del Cabo

NATIONAL:

DISTINCTIVE CHARACTERS:

Carapace massive, about as wide as long; anterolateral margins produced and ending in a sharp tooth, distinctly constricted at level of cervical incision, so that the lateral margin shows a broadly triangular indentation in anterior half. Eyes placed on the anterior margin of the carapace, slightly closer to the anterolateral angle than to the median line of the carapace. Upper surface of body densely covered with low small tubercles and very short hairs; shallow and wide grooves present on carapace. Abdominal segments slightly elevated in the middorsal line, but without a distinct carina and without pronounced median humps on third and fourth segments. Anterior margin of pleuron of second abdominal segment strongly curved, ending in a strong, posteriorly directed tooth, but without anterior teeth, posterior margin with teeth that become smaller proximally. Antennae transformed into paddle-shaped plates; margin of distal segment finely crenulate, the other large segment with 3 or 4 blunt teeth on outer margin, anterolateral angle sharply pointed.

Colour: upper surface of carapace bright red with grey areas, under surface yellowish. Median dorsal area of first abdominal segment with 3 to 5 red spots, the median of which is the smallest. Legs with a distinct, sharply defined, red band on each of the distal four segments. Antennules red distally.



0 4 cm

DISTINGUISHING CHARACTERS OF SIMILAR SPECIES OCCURRING IN THE AREA:

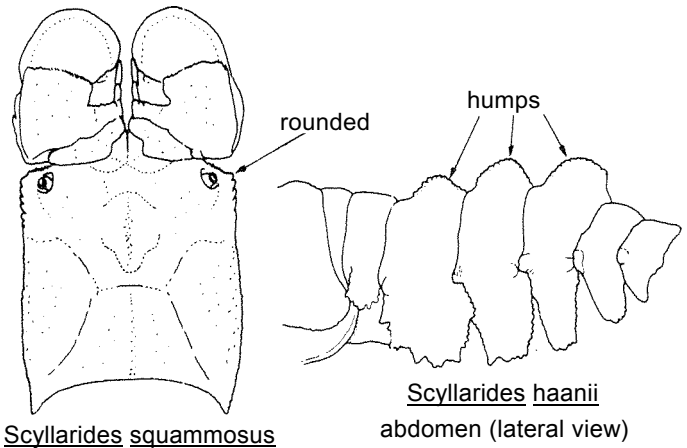
Other Scyllarides species: anterolateral angle of the carapace not produced and not sharply pointed. Also the lateral margin of the carapace is almost straight in the anterior half. S. squamosus has large teeth on anterior margin of second abdominal pleura and has the median red spot on first abdominal segment larger than the laterals. S. haanii has a large median hump on the third and fourth abdominal segments.

Scyllarus species: much smaller; last segment of antenna with few large marginal teeth, rather than being minutely crenulate.

Ibacus and Parribacus species: a deep and narrow cervical incision, which measures about 1/4 of the width of the carapace.

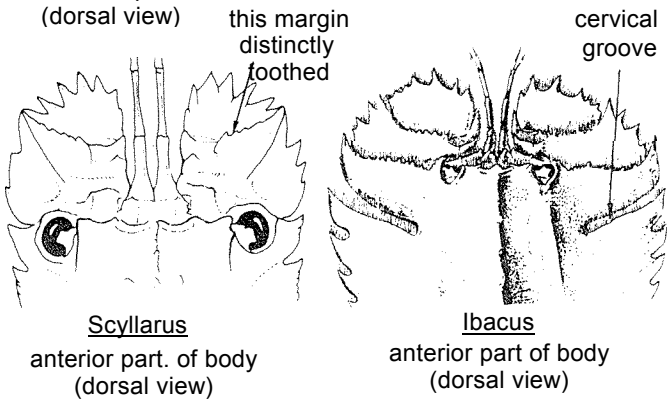
Arctides regalis: abdomen with conspicuous elevated, crenulated, smooth-topped structures.

Thenus orientalis: carapace distinctly narrowing posteriorly, and eyes placed at anterolateral angles of carapace.



Scyllarides squamosus
anterior part (dorsal view)

Scyllarides haanii
abdomen (lateral view)



Scyllarus
anterior part. of body (dorsal view)

Ibacus
anterior part of body (dorsal view)

SIZE:

Maximum: over 20 cm total length; carapace length to about 9 cm.

GEOGRAPHICAL DISTRIBUTION AND BEHAVIOUR:

Restricted to the southeast coast of Africa, from Inhambarie (Mozambique) (about 24°S) to Cape Agulhas (South Africa) (34°50'S).

Occurs in depths between 37 and 380 m, on a bottom of fine sediments: mud, sandy mud, muddy sand, or fine sand. The species seems to dig in the mud, being described as "digger lobster" or "mud burrowing crustacean".

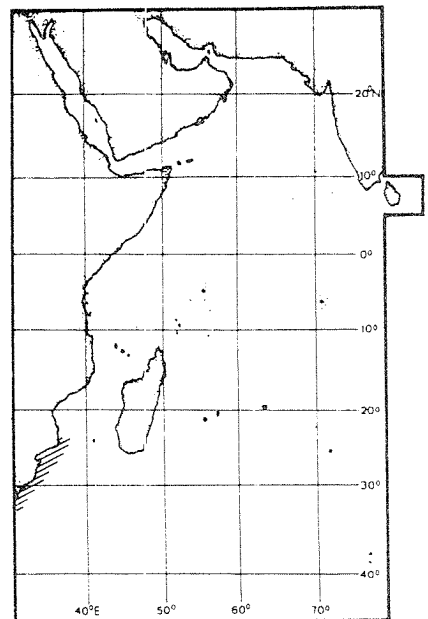
PRESENT FISHING GROUNDS:

There seems to be no special fishery for the species, although Von Bonde (1930, Rep.Fisheries mar.biol.Survey, S.Africa, 8:5) remarked that it "occurs off the coast of Natal in such numbers as to be of economic importance".

CATCHES, FISHING GEAR AND FORMS OF UTILIZATION:

Separate statistics are not reported for this species.

Seems to be occasionally taken by trawlers. There is a closed season for it in South Africa from 1 July to 31 October; soft-shelled specimens and females carrying eggs are completely protected.



FAO SPECIES IDENTIFICATION SHEETS

FAMILY: SCYLLARIDAE

FISHING AREA 51
(W. Indian Ocean)*Scyllarides squamosus* (H.Milne Edwards, 1837)

OTHER SCIENTIFIC NAMES STILL IN USE: None

VERNACULAR NAMES:

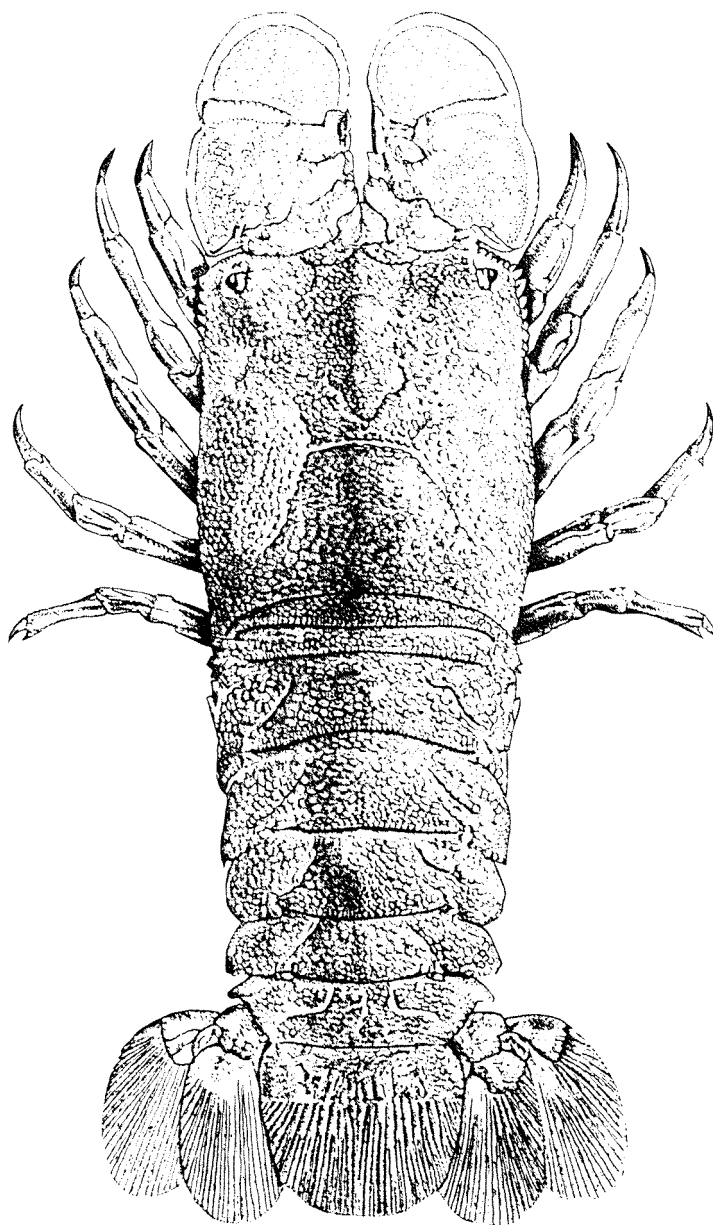
FAO : Erg - Blunt locust lobster
Fr - Cigale grenue
Sp - Cigarro nato

NATIONAL

DISTINCTIVE CHARACTERS:

Carapace massive, rectangular, slightly longer than broad, with the anterolateral angles bluntly rounded or rectangular, not produced. Lateral margins in the anterior part about straight, the cervical incision hardly noticeable. Eyes placed on anterior margin of carapace, slightly closer to anterolateral angle than to midline of carapace. Upper surface of body densely covered by many small blunt tubercles and very short hairs; carapace with some shallow, wide grooves. Abdominal segments slightly elevated in the midline but without distinct median carina; no median humps on third and fourth abdominal segments, pleuron of second abdominal segment with large teeth on anterior and lateral margins, posterior margin without large basal tooth. Antennae transformed into paddle-shaped plates; margin of distal plate minutely crenulate, without teeth, anterolateral angle rounded; the other large plate without large teeth on outer margin, teeth on inner margin rather small, anterolateral angle blunt.

Colour: body reddish, marbled with brown or grey. First abdominal segment bearing dorsally 3 large red spots, the median of which is up to twice as wide as the other two; the spots are often somewhat fused anteriorly, but always distinct posteriorly. Legs not distinctly banded. Antennules brownish.



DISTINGUISHING CHARACTERS OF SIMILAR SPECIES OCCURRING IN THE AREA:

Scyllarides elisabethae: carapace distinctly constricted in the anterior half near the cervical incision, which is very distinct; anterolateral angles sharply produced; second abdominal pleura without large teeth on anterior margin; legs with distinct sharp red bands.

Scyllarides haanii and S. tridacnophaga: posterior margin of second abdominal pleuron with a large basal tooth above which the margin is concave and unarmed. Furthermore, a large median hump on both the third and fourth abdominal segments in S. haanii and dorsal spots on the first abdominal segment in S. tridacnophaga placed widely apart and of about the same size.

Scyllarus species: much smaller; last segment of antenna with few large marginal teeth, rather than being minutely crenulate.

Ibacus and Parribacus species: a deep and narrow cervical incision, which measures about 1/4 of carapace width.

Thenus orientalis: carapace strongly narrowing posteriorly, and eyes placed at anterolateral angles of carapace.

Arctides regalis: upper surface of abdomen not uniformly granular, but with elevated, crenulated, smoothly topped structures.

SIZE:

Maximum: carapace length of males about 10 cm, of females about 15 cm. Maximum reported total length about 40 cm.

GEOGRAPHICAL DISTRIBUTION AND BEHAVIOUR:

Only scattered distributional records are available for this species. Within the area, it is known from Kenya and Tanzania, Gulf of Aden, Réunion, Mauritius and Rodrigues Islands. Elsewhere, from Japan, the Hawaiian Archipelago, New Caledonia and the Loyalty Islands.

Lives at depths between 0 and 80 m (evidently most common between 20 and 50 m) on reefs and in rocky areas, hiding in daytime in crevices in the rocks.

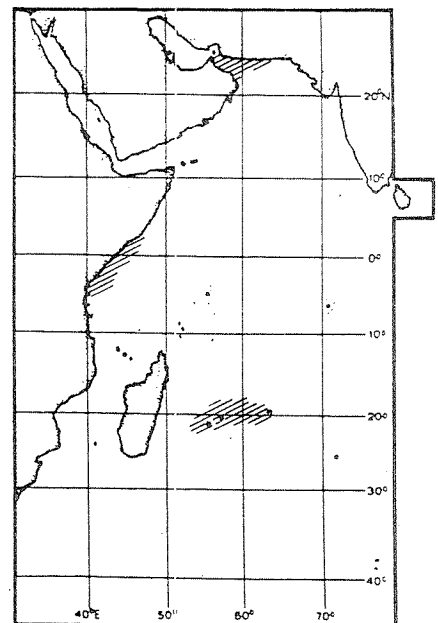
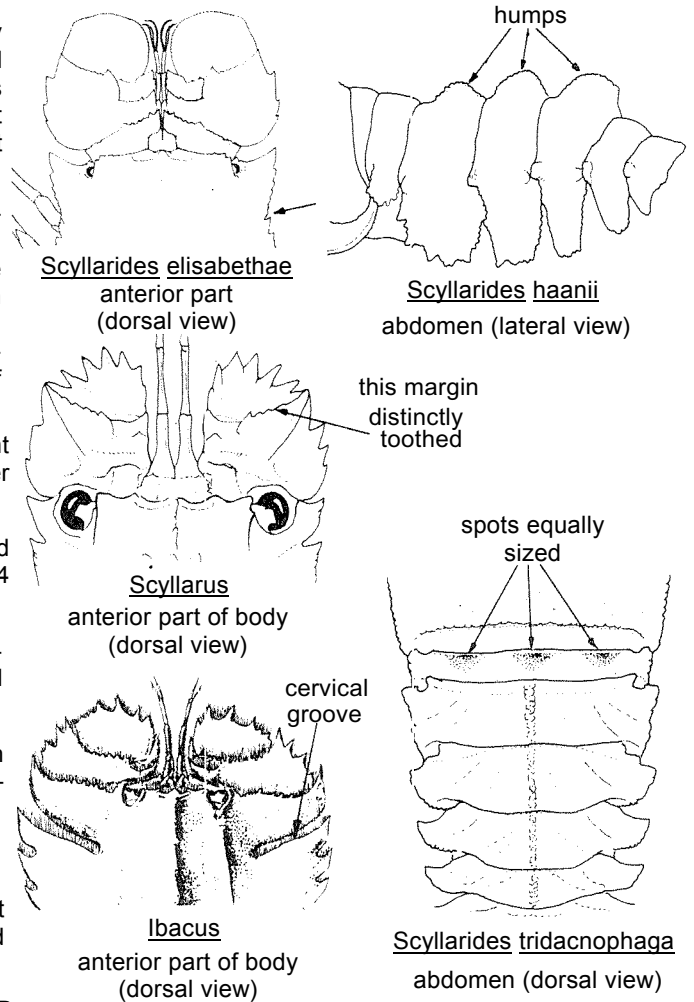
PRESENT FISHING GROUNDS:

There is no special fishery for the species, but when taken, it is esteemed as food.

CATCHES, FISHING GEAR AND FORMS OF UTILIZATION:

Separate statistics are not reported for this species.

The species is only occasionally taken. According to Tinker (1965, Pacific Crustacea, 44), in Hawaii the species is caught in wire traps and by divers and is sometimes offered for sale in local markets.



FAO SPECIES IDENTIFICATION SHEETS

FAMILY: SCYLLARIDAE

FISHING AREA 51
(W. Indian Ocean)*Scyllarus batei* Holthuis, 1946OTHER SCIENTIFIC NAMES STILL IN USE: *Scyllarus orientalis* (Bate, 1888) not Lund, 1793

VERNACULAR NAMES:

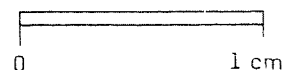
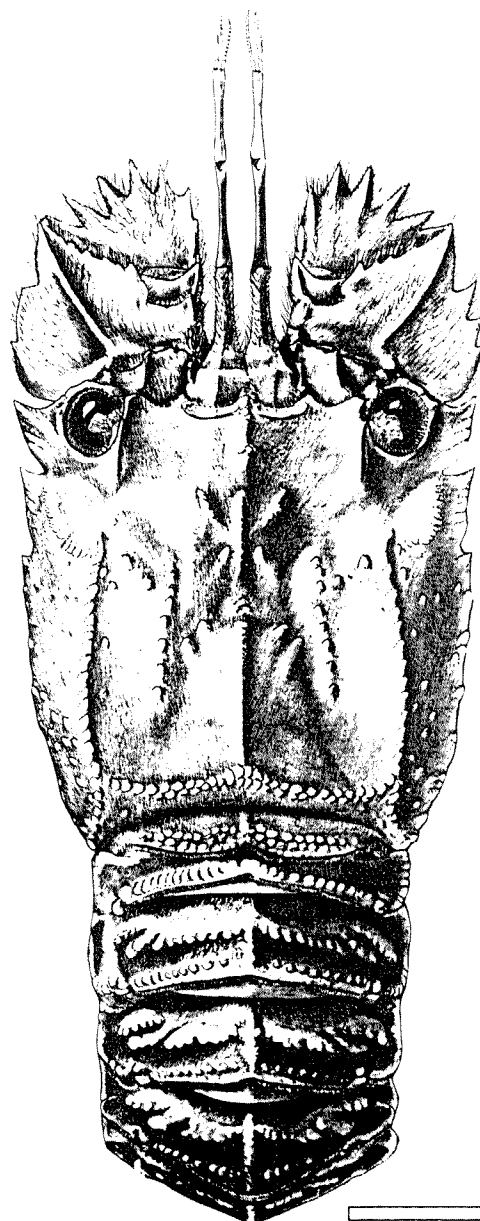
FAO: En - Soft locust lobster
Fr - Cigale douce
Sp - Cigarro blanducho

NATIONAL:

DISTINCTIVE CHARACTERS:

Carapace rectangular, about as long as broad, lateral margin with 2 shallow incisions, the anterior deepest. Dorsal surface with 3 rather sharp longitudinal keels: the median keel with 3 teeth, one behind and two before the cervical groove; the 2 lateral keels start at inner margin of orbit, are widely interrupted behind the orbit and continue almost to the posterior margin of carapace. Surface of carapace with distinct pubescence, tubercles numerous on the ridges, scarce in between. Antennae large, paddle-shaped, each with two large and some small segments; the anterior large; segment with 6 or 7 sharp triangular teeth; posterior large segment dorsally with a single sharp oblique carina, lateral margin with 2 or 3 teeth. Abdomen with a rather sharp high median carina, and on each segment 1 or 2 transverse carinae with high or squamiform tubercles; hardly any arborescent ornamentation on the segments.

Colour: pale brown with the ridges and tubercles pale purple; a rather conspicuous red spot in each posterolateral angle of the carapace.



DISTINGUISHING CHARACTERS OF SIMILAR SPECIES OCCURRING IN THE AREA:

Scyllarides rubens, S. rugosus, S. martensii, S. lewinsohni and S. gibberosus: the posterior of the two large plates of the antenna shows in addition to the large oblique carina a shorter carina or a row of large tubercles, in S. batei the surface of the segment is quite smooth on either side of the oblique carina.

S. ornatus: can be immediately distinguished by the presence of a strong sharp median spine on the ventral surface between the bases of the last legs.

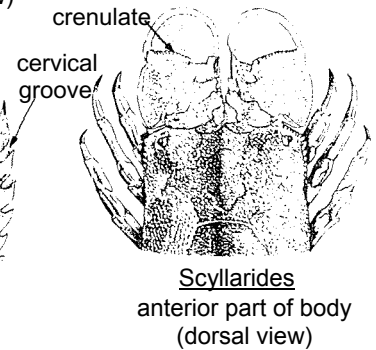
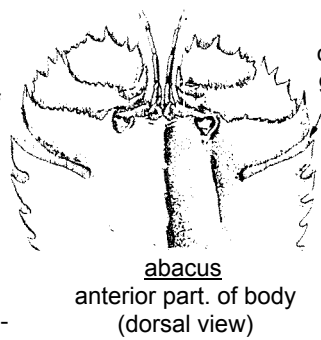
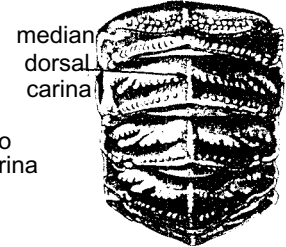
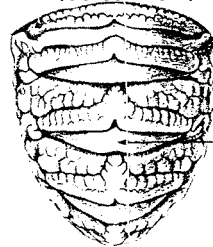
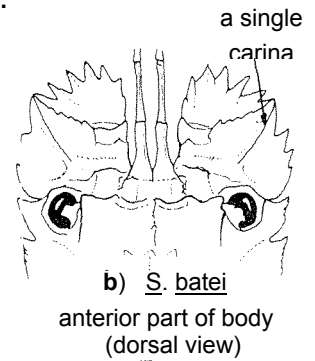
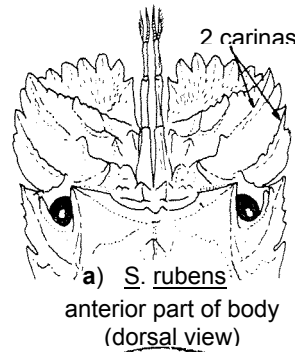
S. cultrifer, S. gibberosus, S. sordidus and S. pumilus: abdomen without a sharp median dorsal carina.

Arctides regalis: distal segment of the antenna with numerous (more than 20) small teeth on anterior margin.

Ibacus and Parribacus species: a deep cervical incision (measuring at least 1/4 of the width of the carapace).

Scyllarides species: much larger and have the distal margin of the anterior large segment of the antenna finely crenulated.

Thenus orientalis: straight lateral margins of the carapace distinctly converging posteriorly; eyes implanted on the anterolateral angles of the carapace.



SIZE:

Maximum: about 7 cm total length, corresponding with a carapace length of about 3 cm.

GEOGRAPHICAL DISTRIBUTION AND BEHAVIOUR:

Within the area, known from the Gulf of Aden, south coast of the Arabian Peninsula, East African waters (off Kenya and Zanzibar) and southwest coast of India. Also present in the Eastern Indian Ocean and the Western Central Pacific to the Philippines and Indonesia.

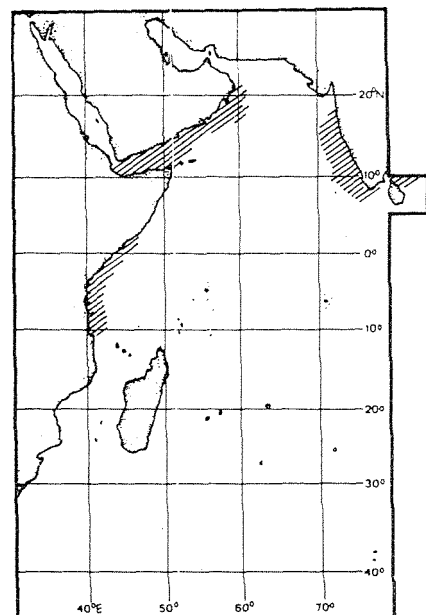
Found on sandy or muddy bottoms at depths between 160 and 270 m.

PRESENT FISHING GROUNDS:

There is no special fishery for the species, which is taken occasionally by deep-sea trawlers.

CATCHES, FISHING GEAR AND FORMS OF UTILIZATION:

The species is sometimes taken in small quantities by deep-sea shrimp trawlers (George, 1969, Journ.mar.biol.Assoc. India, 9:433), but certainly cannot be classed as commercially (or potentially commercially) important.



FAO SPECIES IDENTIFICATION SHEETS

FAMILY: SCYLLARIDAE

FISHING AREA 51
(W. Indian Ocean)*Thenus orientalis* (Lund, 1793)

OTHER SCIENTIFIC NAMES STILL IN USE: None

VERNACULAR NAMES:

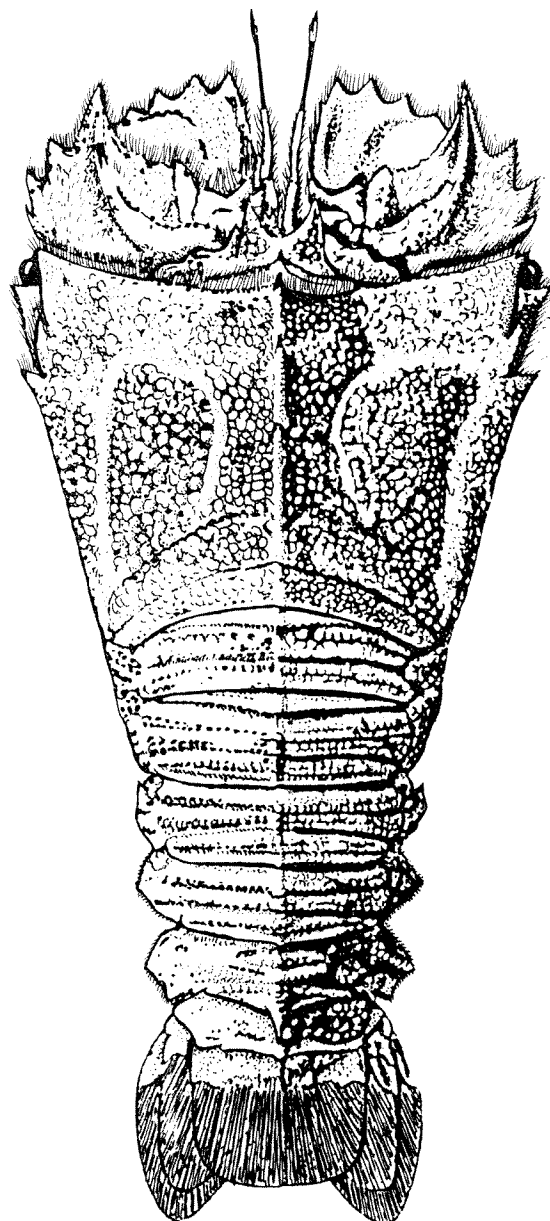
FAO : En - Flathead locust lobster
Fr - Cigale raquette
Sp - Cigarro chato

NATIONAL:

DISTINCTIVE CHARACTERS:

Carapace flat, widest in front, distinctly narrowing posteriorly; lateral margins straight, with only 2 teeth, one at the end, the other in the anterior fourth, posterior 3/4 without teeth. Anterior tooth forming part of the orbit, which is situated at the antero-lateral angle of carapace. Upper surface of carapace with numerous small granules and a median carina with 3 sharp teeth; a sharp tooth behind the orbit. Anterior large segment of antenna with 3 sharp triangular teeth on inner half of distal margin, some small teeth at either side of these. Posterior large segment ending in a large, sharply pointed, inward curved tooth; outer margin with 3 smaller teeth. Abdomen granular with transverse groove over middle of each segment; fifth segment with a sharp spini-form tooth in the middle of posterior margin.

Colour: pale yellowish brown with the granules of a darker brown. Tips of the teeth whitish. Tail fan with a yellow tinge.



DISTINGUISHING CHARACTERS OF SIMILAR SPECIES OCCURRING IN THE AREA:

None of the other Scyllarids has the orbits placed at the anterolateral angles of the carapace. Ibacus and Parribacus have the lateral margin of the carapace curved and provided with distinct teeth over the whole length, while furthermore the cervical incision is very deep. Arctides, Scyllarides and Scyllarus have the carapace quadrangular, not strongly narrowing posteriorly, the carapace is not so strongly flattened, and the abdomen lacks the strong posterior median spine of the fifth segment.

SIZE:

Maximum: about 8 cm carapace length and 25 cm total length.

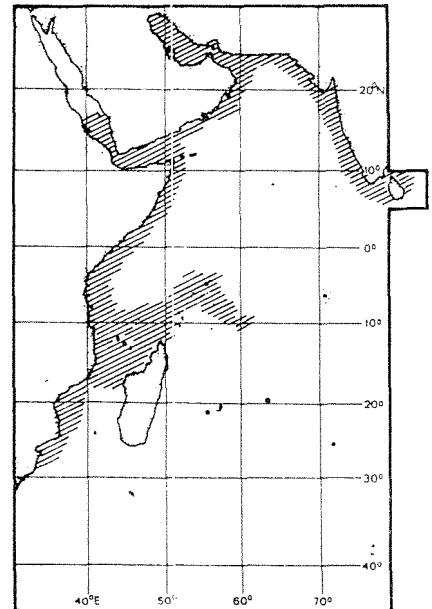
GEOGRAPHICAL DISTRIBUTION AND BEHAVIOUR:

The range of the species extends eastward from the East African coast (southern Red Sea to Natal) to China, Taiwan Island, the Ryukyu Islands, the Philippines, Indonesia and tropical Australia (Western Australia to Queensland).

Found on soft bottoms (mud and/or sand, sometimes mixed with shells or gravel) in depths between 8 and 70 m (exceptionally 100 m), usually between 10 and 50 m.

PRESENT FISHING GROUNDS:

These lobsters are taken practically throughout their range, although there seems to be no special fishery for them; they form an admixture to shrimp catches.



CATCHES, FISHING GEAR AND FORMS OF UTILIZATION:

Within, Fishing Area 51 catch statistics of this species are only known from Bahrein where the annual number of metric tons landed amounted to 2 (in 1979), 4 (in 1980) and 7 (in 1981). The catches are classed as "slipper lobsters, Scyllaridae", but evidently consist almost, if not entirely, of this species Ivanov & Krylov (1980, Crustaceana, 38:287) mention rather meager catches off Kenya, Tanzania, Central Mozambique and Mascarene Ridge (up to 30 specimens per hour trawling)

The species is taken with otter-trawls by shrimp trawlers; there are reports that they also are taken by divers.

It is marketed fresh, or frozen (lobsters caught in the southern Red Sea by Israeli trawlers in the 1960s were sold in Israel). In Australia the species is highly esteemed as food, being far superior in taste to Ibacus.