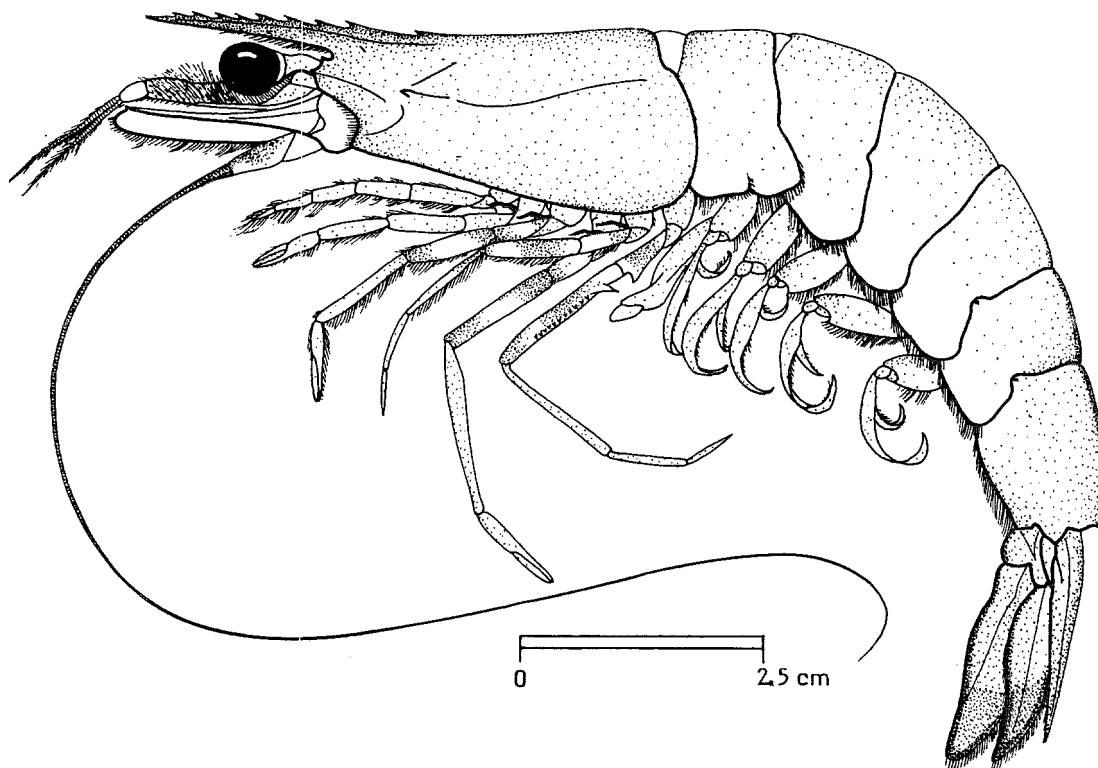
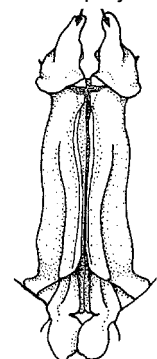


FAO SPECIES IDENTIFICATION SHEETS

FAMILY: PENAEIDAE

FISHING AREA 51
(W. Indian Ocean)*Metapenaeus ensis* De Haan, 1844

OTHER SCIENTIFIC NAMES STILL IN USE : None

distomed.
proj.petasma,
ventral view

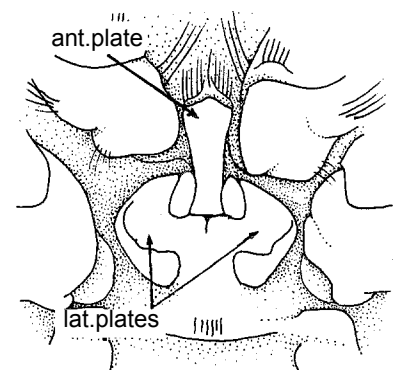
VERNACULAR NAMES:

FAO : En - Greasyback shrimp
Fr - Crevette glissante
Sp - Camarón resbaloso

NATIONAL:

DISTINCTIVE CHARACTERS:

Almost entire body pubescent, occasionally pubescence restricted to dorsal part of carapace and posterior abdominal segments (juveniles hairless); rostrum armed with 8 to 11 teeth along entire dorsal margin, nearly straight, and reaching to, or nearly to, tip of antennular peduncle; postrostral crest reaching to, or almost to posterior margin of carapace; adrostral crest ending behind second rostral tooth, adrostral groove behind epigastric tooth; branchiocardiac ridge usually sinuous, reaching posterior extension of hepatic spine; telson armed only with spinules; a small ischial spine on first pereopod. In adult males, merus of fifth pereopod with a proximal notch followed by a long, inwardly curved spiniform process and a row of tubercles; distomedian projections of petasma convoluted, greatly swollen and directed forward, triangular in shape and concealing almost entirely distolateral projections in ventral view. In females, anterior plate of thelycum lone and deeply grooved; lateral plates with strongly raised lateral margins forming posteriorly 2 inwardly curved triangular projections.



thelycum

Colour: body pink to greenish-grey; middorsal abdominal crest brown; antennae red; pereopods and pleopods of same colour as body or red, the former with white stripes on ischium and merus; distal part of uropods purple-blue, external margins of exopods red-brown.

DISTINGUISHING CHARACTERS OF SIMILAR SPECIES OCCURRING IN THE AREA:

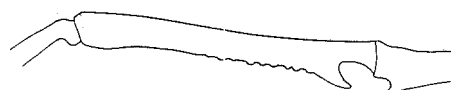
Metapenaeus monoceros: different configuration of petasma and thelycum.

M. kutchensis (restricted to Gulf of Kutch, India), M. affinis and M. elegans: different configuration of petasma and thelycum; in males, merus of fifth pereopod with a tubercle (with a long spiniform process in M. ensis); in M. affinis, tips of uropods pale (purple-blue in M. ensis)

Other species of Metapenaeus: different configuration of petasma and thelycum; distal part of uropods not purple-blue. Furthermore, these species differ from M. ensis by at least one of the following characters: rostrum very short; rostrum toothless on distal third to half; branchiocardiac ridge absent, or distinct only on posterior third of carapace (reaching posterior extension of hepatic spine in M. ensis).



M. elegans



M. ensis
merus of fifth pereopod (male)

SIZE:

Maximum total length: males, 15.4 cm; females, 18.9 cm.

GEOGRAPHICAL DISTRIBUTION AND BEHAVIOUR:

Within the area, reported only from the east coast of Sri Lanka. Further east it extends from Bangladesh to Japan, New Guinea and Australia.

Juveniles are found in estuaries, backwaters and near-shore areas; adults in deeper, and often turbid waters down to 70 m depth on mud, sandy-mud or silt.

PRESENT FISHING GROUNDS:

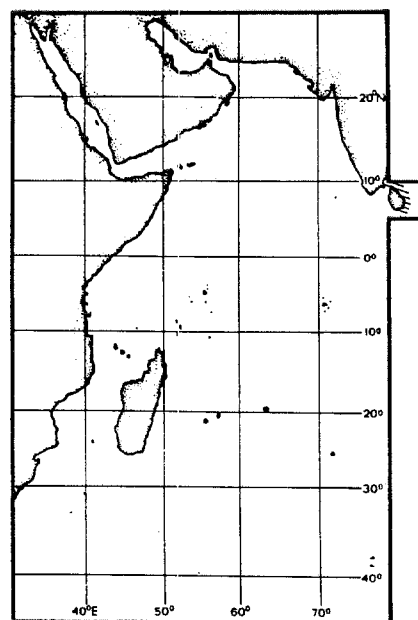
The species is apparently abundant in the lagoons and the sea off north-east Sri Lanka.

CATCHES, FISHING GEAR AND FORMS OF UTILIZATION:

Separate statistics are not reported for this species.

Caught with shrimp trawls, gill nets, stake nets and other set gear, scoop nets and push nets (the last 2 for juveniles).

Probably marketed fresh, frozen or dried.

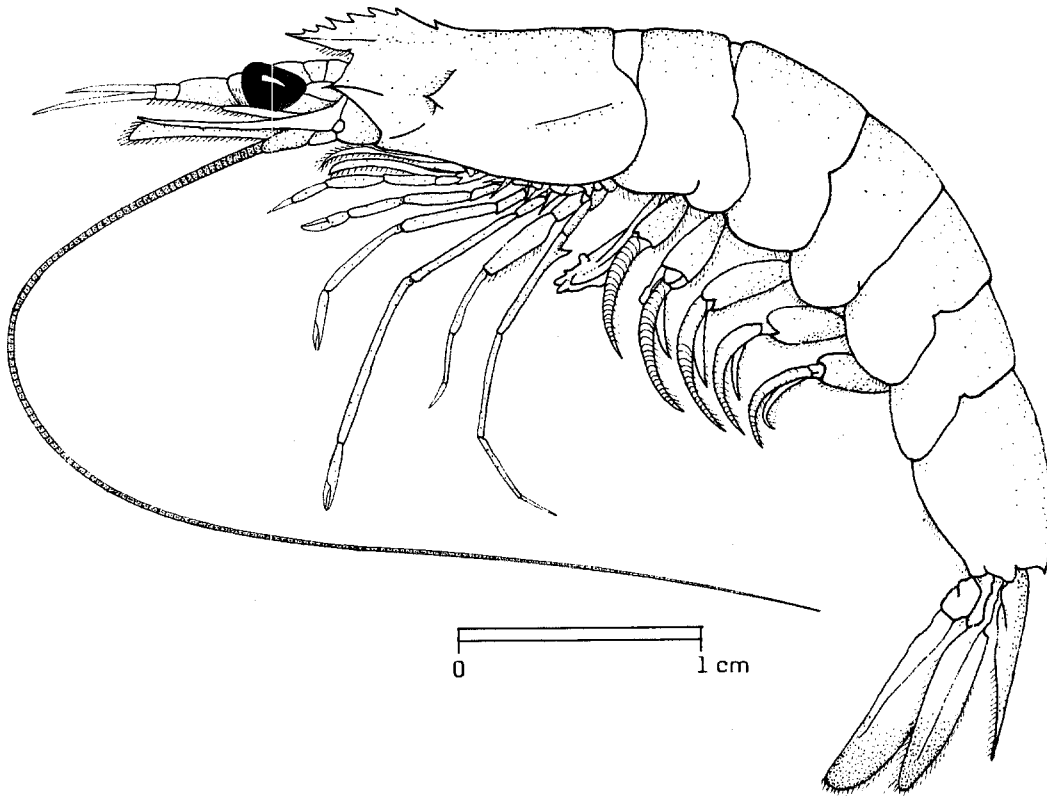


FAO SPECIES IDENTIFICATION SHEETS

FAMILY: PENAEIDAE

FISHING AREA 51
(W. Indian Ocean)*Metapenaeus lysianassa* (De Man, 1888)

OTHER SCIENTIFIC NAMES STILL IN USE: None



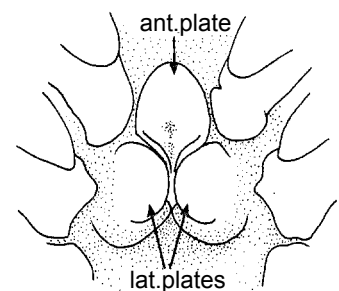
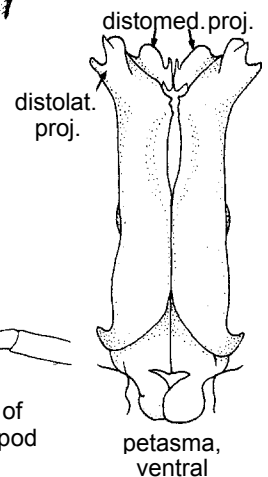
VERNACULAR NAMES:

FAO: En - Bird shrimp
Fr - Crevette oiseau
Sp - Camarón parancero

NATIONAL:

DISTINCTIVE CHARACTERS:

Almost entire body pubescent; rostrum very short, reaching as far as middle of first antennular article and armed with 6 or 7 teeth along entire dorsal margin, rostral crest high; postrostral ridge ending near posterior margin of carapace; adrostral crest and groove reaching as far as third rostral tooth; branchiocardiac groove not reaching to middle of carapace; telson armed only with spinules; ischial spine on first pereopod absent or minute. In adult males, merus of fifth pereopod with a proximal notch followed by a large, slightly arcuate triangular tooth; distolateral projections of petasma bifurcate distally; distomedian projections with a minute filament on their median margins. In females, anterior and lateral plates of thelycum subequal in size, anterior plate tongue-like and grooved, posterior plates suboval with thick median margins; impregnated fertilized specimens with white conjoined pads on thelycum.



thelycum

Colour: body, pereopods and pleopods pale yellow with grey specks; antennae and distal part of uropods grey.

DISTINGUISHING CHARACTERS OF SIMILAR SPECIES OCCURRING IN THE AREA:

All other Metapenaeus species occurring in the area can be distinguished from M. lysianassa by the configuration of petasma and thelycum. Further distinguishing characters of these species are:

M. brevicornis and M. dobsoni: rostrum toothless on distal half or slightly less, and reaching at least to second antennular article (toothless along entire dorsal margin and reaching to middle of first antennular article in M. lysianassa); adrostral crest and groove reaching at least to second rostral tooth (reaching only to third tooth in M. lysianassa); furthermore, in M. dobsoni the rostral crest is low..

Remaining species of Metapenaeus: rostrum reaching at least to middle of second antennular article and generally armed with more than 7 teeth (6 or 7 teeth in M. lysianassa); adrostral groove ending behind epigastric tooth; in males, merus of fifth pereopod without such a large tooth as in M. lysianassa.

SIZE:

Maximum total length: males, 6.1 cm; females, 9 cm.

GEOGRAPHICAL DISTRIBUTION AND BEHAVIOUR:

Within the area, it occurs along the Indian coast as far north as the Mysore and Goa Provinces and off Sri Lanka. Further east it extends as far as the Gulf of Tonkin, the Indonesian Archipelago and Borneo.

Usually found on mud from the shore to about 28 m depth.

PRESENT FISHING GROUNDS:

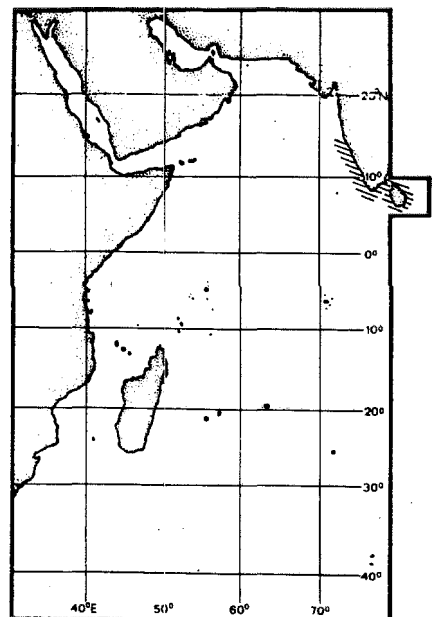
Sporadically found in the landings, among other shrimps, along the Indian coast.

CATCHES, FISHING GEAR AND FORMS OF UTILIZATION:

Separate statistics are not reported for this species.

Caught mainly with traditional gear: stake nets, traps and other set nets, push nets and shore seines; also taken by drift nets and otter trawls.

Marketed fresh or dried (local consumption).

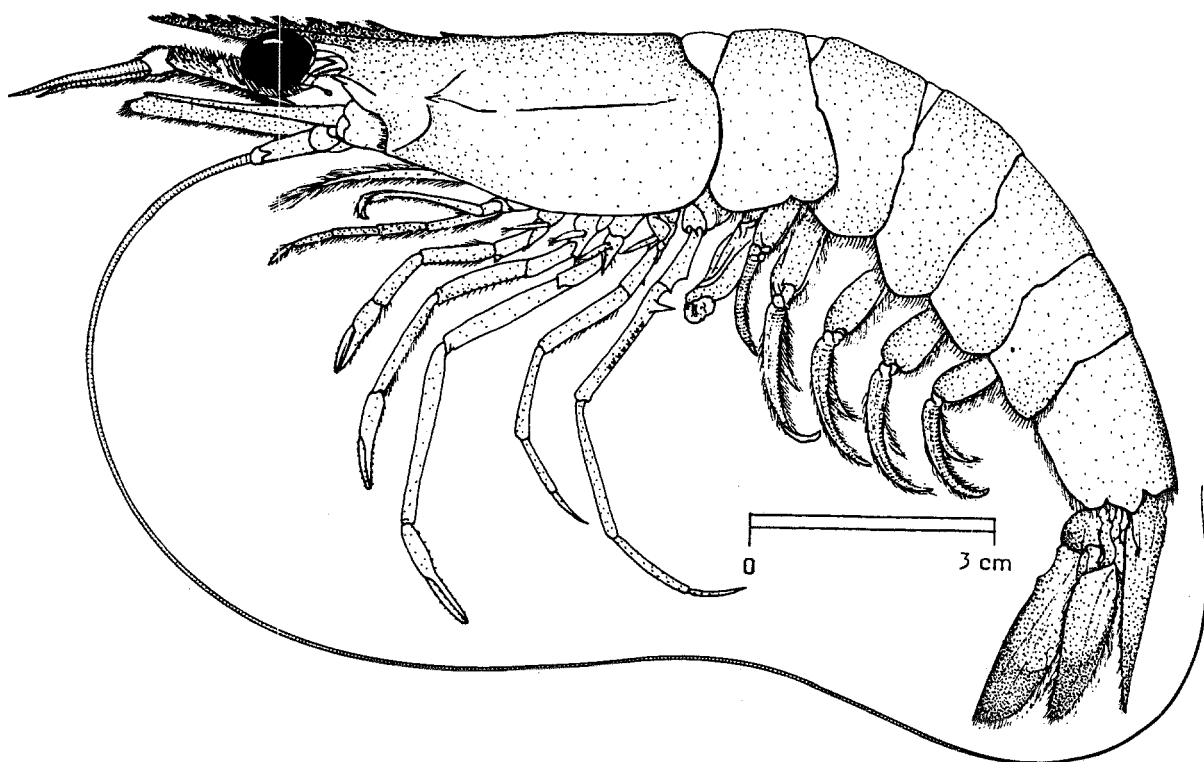


FAO SPECIES IDENTIFICATION SHEETS

FAMILY: PENAEIDAE

FISHING AREA 51
(W. Indian Ocean)*Metapenaeus monoceros* (Fabricius, 1798)

OTHER SCIENTIFIC NAMES STILL IN USE : None



VERNACULAR NAMES:

FAO : En - Speckled shrimp
Fr - Crevette mouchetée
Sp - Camarón moteado

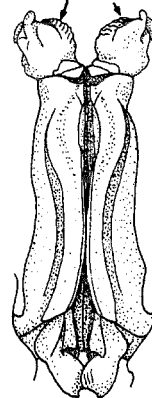
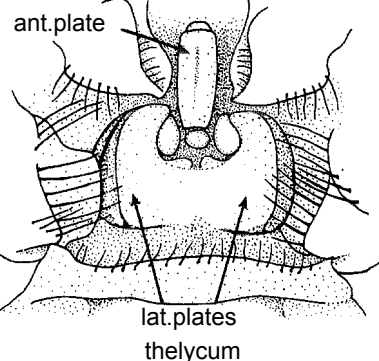
NATIONAL:

DISTINCTIVE CHARACTERS:

Almost entire body pubescent, or in East Africa (except the Red Sea), pubescence restricted to dorsal part of carapace and abdominal patches; rostrum armed with 9 to 12 teeth along entire dorsal margin, straight, reaching as far as, or beyond, tip of antennular peduncle; postrostral crest reaching posterior margin of carapace or nearly so; adrostral crest ending behind second rostral tooth, adrostral groove behind epigastric tooth; branchiocardiac ridge sinuous, reaching posterior extension of hepatic spine; telson armed only with spinules; a small ischial spine on first pereopod. In adult males, merus of fifth pereopod with a proximal notch followed by a long, inwardly curved spiniform process and a row of tubercles; distomedian projections of petasma convoluted, greatly swollen, bulbiform, directed anterolaterally and concealing distolateral projections in ventral view. In females, anterior plate of thelycum long and deeply grooved; lateral plates with strongly raised lateral margins forming 2 longitudinal crests.

Colour: body pink, green-greyish or whitish with brown specks; rostral and middorsal abdominal crests brown; antennae red; pereopods and pleopods of same colour as body, sometimes more intensely pink; distal part of uropods purple-blue, external margin of exopods red.

distomed.proj.

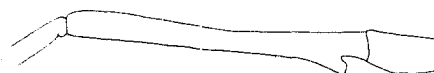
petasma,
ventral view

DISTINGUISHING CHARACTERS OF SIMILAR SPECIES OCCURRING IN THE AREA:

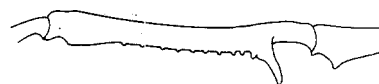
Metapenaeus ensis: different configuration of petasma and thelycum; within Fishing Area 51, restricted to Sri Lanka.

M. kutchensis, M. affinis and M. elegans: different configuration of petasma and thelycum; in males, merus of fifth pereopod with a tubercle (with a long spiniform process in M. monoceros); in M. affinis, tip of uropods pale (purple-blue in M. monoceros); furthermore, M. kutchensis is restricted to the Gulf of Kutch in India and M. elegans has been reported only from Sri Lanka within Fishing Area 51.

Other species of Metapenaeus: different configuration of petasma and thelycum; distal part of uropods not purple-blue. Furthermore, these species differ from M. monoceros by at least one of the following characters: rostrum very short; rostrum toothless on distal third to half; branchiocardiac ridge absent, or distinct only on posterior third of carapace (reaching posterior extension of hepatic spine in M. monoceros).



M. elegans



M. monoceros

merus of fifth pereopod (male)

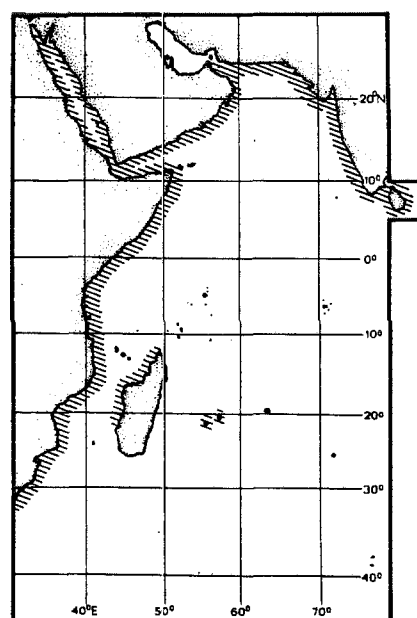
SIZE:

Maximum total length: males, 15 cm; females, 20 cm.

GEOGRAPHICAL DISTRIBUTION AND BEHAVIOUR:

Occurs throughout the area, from South Africa to south India, including the Red Sea, Madagascar, Mauritius, La Réunion and Sri Lanka, but absent from the "Gulf": Further east, it extends as far as the Malay Peninsula; it has entered the eastern Mediterranean through the Suez Canal.

Usually found from the coastline to depths of about 70 m (but it has been fished down to 170 m in an exploratory survey off Pakistan), mainly on mud, sandy-mud or silt; juveniles inhabit estuaries, backwaters or are close to the shore; along the southwest coast of India it breeds in 50 to 60 m depth.



PRESENT FISHING GROUNDS:

One of the most important species of shrimp in the area and of major commercial importance almost throughout its range; it is particularly important in Mozambique, the west coast of Madagascar and, to a lesser extent, in India.

The species is cultivated in Pakistan and India.

CATCHES, FISHING GEAR AND FORMS OF UTILIZATION:

Separate statistics are not reported for this species.

Offshore, it is caught mainly with shrimp trawls; in inshore and near-shore waters several other types of gear are also used: boat seines, shore seines, gill nets, stake nets and other set gear, cast nets, push nets and scoop nets (the last 2 only for juveniles).

Marketed fresh, frozen, canned, peeled, cooked or fried in paste; small size shrimps are also used as bait.