

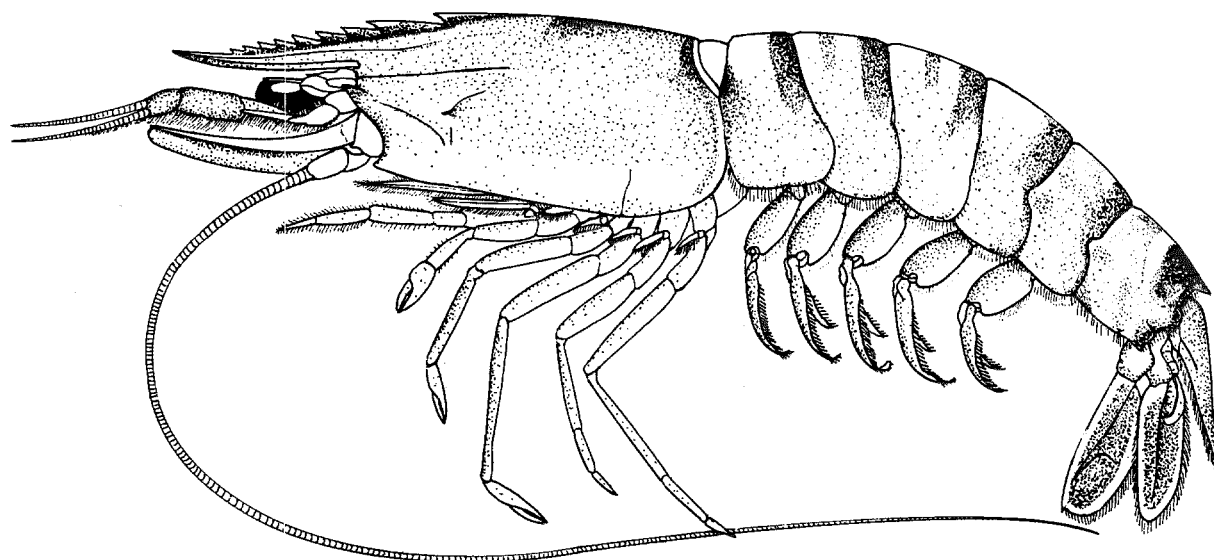
## FAO SPECIES IDENTIFICATION SHEETS

FAMILY: PENAEIDAE

FISHING AREA 51  
(W. Indian Ocean)

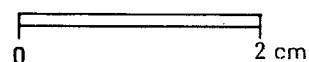
*Parapenaeopsis maxillipedo* Alcock, 1905

OTHER SCIENTIFIC NAMES STILL IN USE: None



## VERNACULAR NAMES:

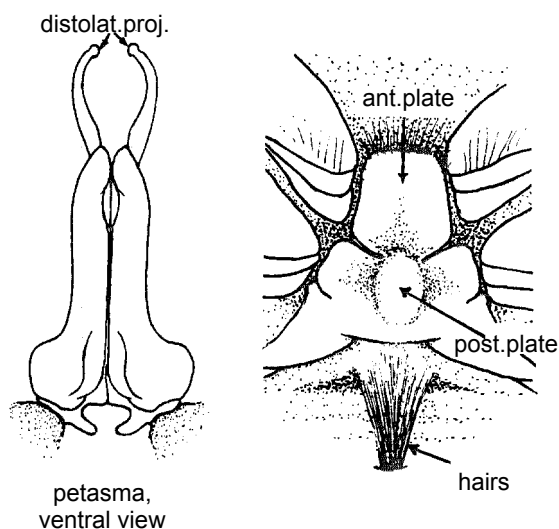
FAO :           En - Torpedo shrimp  
                  Fr - Crevette torpille  
                  Sp - Camarón torpedo



NATIONAL

## DISTINCTIVE CHARACTERS:

Rostrum straight, tip uptilted, generally toothless on distal 1/4, reaching from middle of second to distal margin of third antennular article and armed with 8 to 11 (usually 9 or 10) dorsal teeth; epigastric tooth present; postrostral crest reaching, or almost, posterior margin of carapace; longitudinal suture reaching 1/3 to 1/2 of carapace length; antennular flagella 0.35 to 0.55 times the length of carapace; epipod present on first and second pereopods; basal spine present on first 3 pairs of pereopods; telson unarmed. Petasma (in males) with long and slender, horn-like distolateral projections, diverging proximally and curving inward distally, without small dorsal spiniform processes; distomedian projections extremely small. In females, anterior plate of thelycum subquadrate, posteriorly depressed and medially fused to posterior plate, the latter with a pair of lateral depressions and a median boss; a median tuft of long setae (hairs) behind the thelycum.



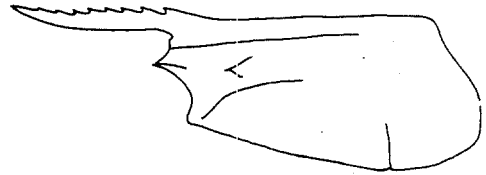
Colour: usually grey, sometimes pale brown; rostrum and postrostral crest dark brown; abdomen with dorsal transverse dark bands; pereopods brownish; pleopods red to brown; uropods greenish to red-brown with a pale stripe along margins.

## DISTINGUISHING CHARACTERS OF SIMILAR SPECIES OCCURRING IN THE AREA:

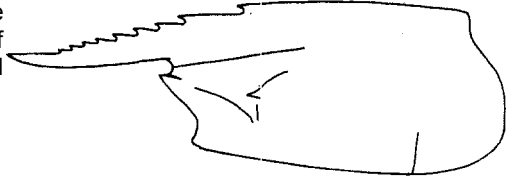
All other species of the genus can be distinguished from Parapenaeopsis maxillipedo by the configuration of petasma and thelycum. Further distinguishing characters are:

P. cornuta: rostrum usually with 7 or 8 teeth (usually 9 or 10 in P. maxillipedo); telson armed with 2 to 4 pairs of spinules (unarmed in P. maxillipedo); basal spine absent on third pereopod (present in P. maxillipedo)

Other species of Parapenaeopsis: longitudinal suture reaching at least 2/3 of carapace (reaching at most half of carapace in P. maxillipedo); basal spine absent on third pereopod.



P. acclivirostris



P. maxillipedo  
carapace

## SIZE:

Maximum total length: males, 10 cm; females, 12.5 (15?) cm.

## GEOGRAPHICAL DISTRIBUTION AND BEHAVIOUR:

Within the area, it occurs in India, from the Gulf of Kutch to the east coast, and Sri Lanka. Also present along the Malay Peninsula, Indonesia and New Guinea.

Found at sea in shallow waters of less than 30 m depth on mud-banks, sometimes also found on sandy-mud bottoms.

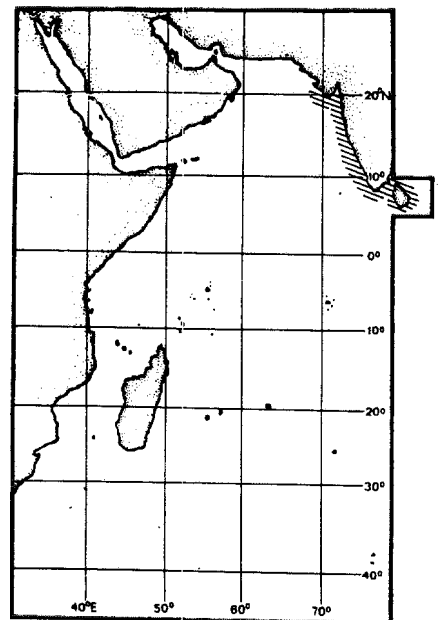
Present in small numbers in the landings along the west coast of India.

## CATCHES, FISHING GEAR AND FORMS OF UTILIZATION:

Separate statistics are not reported for this species.

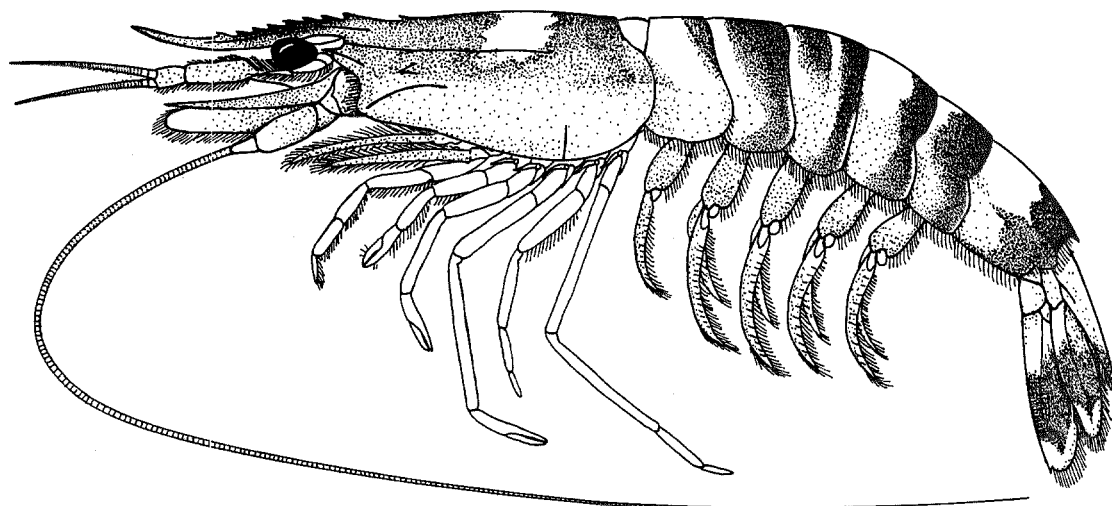
Caught with otter trawls, shrimp gill nets, push nets and shore seines.

Marketed fresh, dried or cooked.



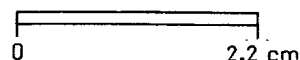
## FAO SPECIES IDENTIFICATION SHEETS

FAMILY: PENAEIDAE

*Parapenaeopsis sculptilis* (Heller, 1862)FISHING AREA 51  
(W. Indian Ocean)OTHER SCIENTIFIC NAMES STILL IN USE: *Parapenaeopsis affinis* sensu Hall, 1962

## VERNACULAR NAMES:

FAO: En - Rainbow shrimp  
Fr - Crevette arc-en-ciel  
Sp - Camarón arco iris



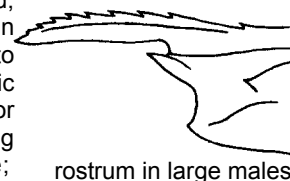
NATIONAL

## DISTINCTIVE CHARACTERS:

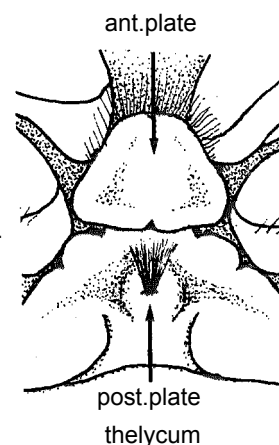
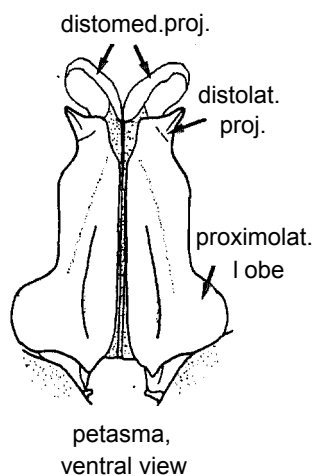
Rostrum armed with 7 to 9 dorsal teeth; in females, sigmoid-shaped, toothless, on distal third to half, upcurved and exceeding antennular peduncle; in large males, curving downward, the unarmed portion absent and only reaching to middle of second antennular article; both shapes found in young males; epigastric tooth small, absent in large males; postrostral crest almost reaching to posterior margin of carapace, feebly grooved or flat; longitudinal suture generally reaching 3/4 of carapace length; antennular flagella 0.4 to 0.6 times the length of carapace;

epipod and basal spines present on first and second pereopods; basis of third pereopod and telson unarmed. In males, petasma with long, rabbit ear-shaped disto-medial projections, deeply concave ventrally; disto-lateral projections short, directed anterolaterally; proximolateral lobes very large, and curved dorsally. In females, thelycum with anterior plate distally rounded and broadly articulating with posterior plate, the latter with a median tubercle bearing a tuft of long setae (hairs).

Colour: body pale with wide, dark brown - almost black - transverse bands; carapace dark brown dorsally, except for a white band about its middle, laterally much paler, yellow or orangish; bands on abdomen reaching ventrolateral margin; pereopods yellowish to pink; pleopods pink to dark red; uropods yellow to pink, with a very wide, dark brown middle transverse band.



rostrum in large males



## DISTINGUISHING CHARACTERS OF SIMILAR SPECIES OCCURRING IN THE AREA:

None of the other *Parapenaepsis* species in the area have the characteristic configuration of petasma and thelycum, nor the complete, dark - almost black - transverse bands on abdomen of *P. sculptilis*. Further distinguishing characters of these species are the following:

*P. uncta*: rostrum with 9 to 11 teeth (7 to 9 in *P. sculptilis*); postrostral crest distinctly grooved (feebly grooved or flat in *P. sculptilis*); a distinct dorsoposterior dark brown patch on carapace (absent in *P. sculptilis*) and two bands on last segment (only one in *P. sculptilis*).

*P. cornuta* and *P. maxillipedo*: transverse bands on abdomen incomplete, restricted to dorsal surface; longitudinal suture reaching at most middle of carapace (to 1/4 of carapace length in *P. sculptilis*).

Other species of *Parapenaepsis*: abdomen without transverse bands; in *P. stylifera* and *P. coromandelice*, telson with fixed lateral spines (unarmed in *P. sculptilis*); in *P. hardwickii*, telson with small movable spines and in *P. acclivirostris*, epipod absent on first 2 pereopods.

### SIZE:

Maximum total length: males, 11 cm; females, 17 cm.

### GEOGRAPHICAL DISTRIBUTION AND BEHAVIOUR:

Within the area, from Pakistan to southeast India. Further east it extends as far as China, the Philippines, Indonesia, New Guinea and Australia.

Usually inhabits shallow waters from the coastline to about 40 m depth on sand, mud or mixed bottoms. It may also be found in deeper waters down to 90 m.

### PRESENT FISHING GROUNDS:

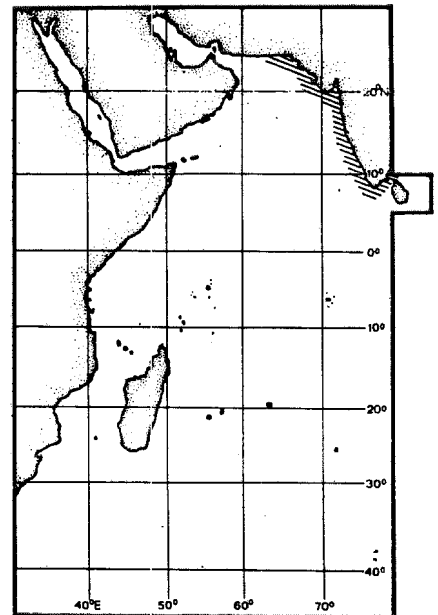
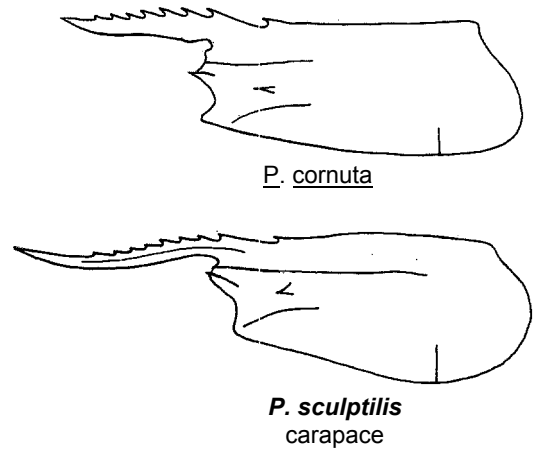
In Pakistan and along the west coast of India, there is a small fishery for the species (caught along with other shrimps); off Bombay it occurs in commercial catches and is one of the highly priced species.

### CATCHES, FISHING GEAR AND FORMS OF UTILIZATION:

Separate statistics are not reported for this species.

Caught mainly with stake nets and bag nets; also taken with boat seines and otter trawls.

Marketed fresh, frozen, peeled and cooked or canned; also used as shrimp meal or shrimp paste.

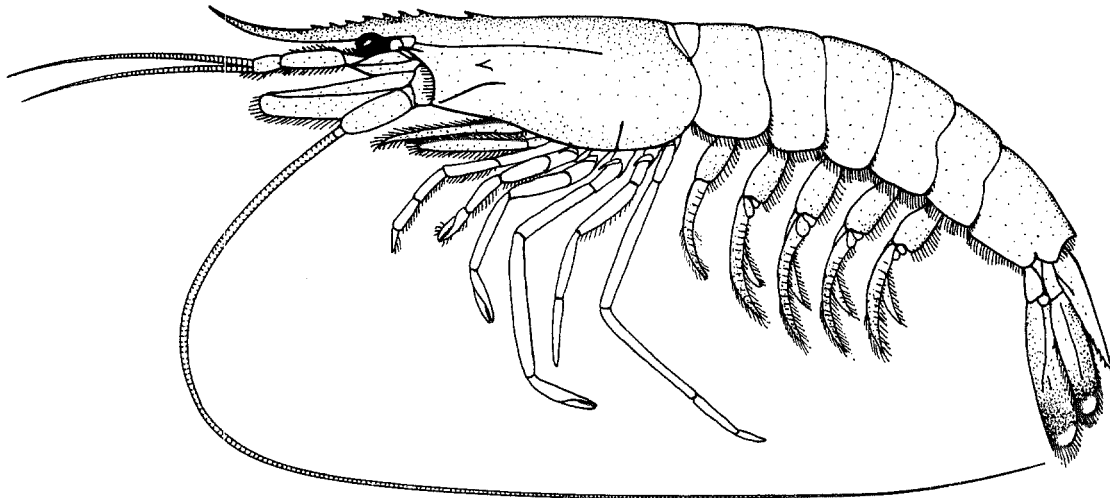


## FAO SPECIES IDENTIFICATION SHEETS

FAMILY: PENAEIDAE

FISHING AREA 51  
(W. Indian Ocean)*Parapenaeopsis stylifera* (H. Milne Edwards, 1837)

OTHER SCIENTIFIC NAMES STILL IN USE: None



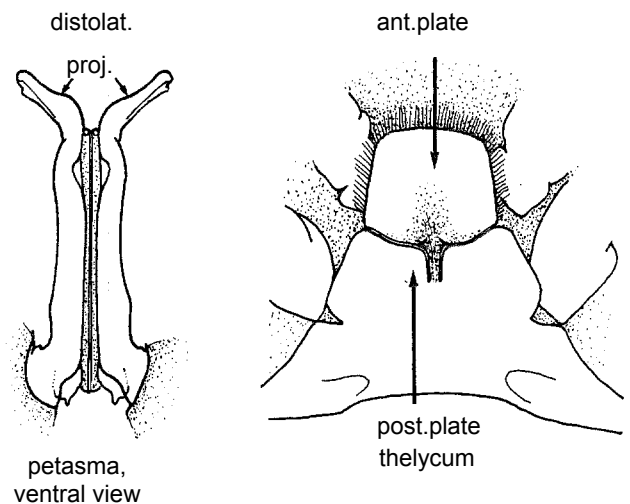
## VERNACULAR NAMES:

FAO :       En - Kiddi shrimp  
              Fr - Crevette kidi  
              Sp - Camarón kidi

NATIONAL:

## DISTINCTIVE CHARACTERS:

Rostrum sigmoid-shaped, strongly upcurved and by far overreaching tip of antennular peduncle (in males somewhat shorter), armed with 7 to 9 dorsal teeth; but toothless in distal half or more; epigastric tooth present; postrostral crest almost reaching posterior margin of carapace; longitudinal suture long, reaching 2/3 of carapace length; telson armed with 4 pairs of lateral fixed spines; antennular flagellae as long as carapace; epipod and basal spine present on first and second pereopods, basis of third pereopod unarmed. In males, distolateral projections of petasma slender, horn-like and straight, directed antero-laterally and with ventro-external openings; distomedian projections small and curved ventrally. In females, anterior plate of thelycum square, concave, with a slender stem-like posterior process; posterior plate deeply notched anteromedially.

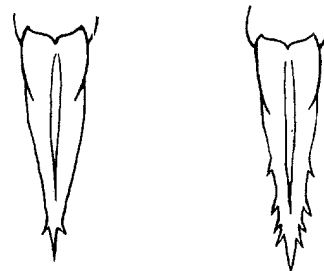


Colour: pale brownish or pinkish white, sometimes greyish; rostrum and abdominal crest darker; pereopods and pleopods yellowish pink to reddish pink; distal part of uropods dark grey, their tips distinctly white.

## DISTINGUISHING CHARACTERS OF SIMILAR SPECIES OCCURRING IN THE AREA:

Parapenaeopsis coromandelica (its presence in Area 51 is restricted to Sri Lanka and southern coast of India): telson armed with 1 or 2 pairs of subapical fixed spines (4 pairs of lateral fixed spines in P. stylifera); uropods uniformly coloured (tips white in P. stylifera).

Other species of Parapenaeopsis: different configuration of petasma and thelycum; telson unarmed, or armed only with mobile spinules; rostrum toothless at most on distal half (unarmed at least on distal half in P. stylifera); furthermore, longitudinal suture reaching at most to middle of carapace in P. cornuta and P. maxillipedo; postrostral crest grooved in P. uncta, females of P. hardwickii, and often in P. sculptilis; epigastric tooth wanting in P. acclivirostris.



P. coromandelica  
telson

P. stylifera

## SIZE:

Maximum total length: males, 11.7 cm; females, 14.5 cm.

## GEOGRAPHICAL DISTRIBUTION AND BEHAVIOUR:

From the Gulf and the Gulf of Oman to south India (to about 10° north along the east coast).

Found from near the coastline to about 90 m depth, but usually in less than 50 m on mud or sandy-mud; the species completes its life cycle in the sea without entering the estuaries during any stage of its life; in south India it breeds in 20 to 22 m depth.

## PRESENT FISHING GROUNDS:

In Pakistan and all along the west coast of India, the species is very common in littoral areas and is of major commercial importance; it is also more or less commonly caught by the otter trawl fishery off Kuwait in the "Gulf".

## CATCHES, FISHING GEAR AND FORMS OF UTILIZATION:

Separate statistics are not reported for this species.

Caught with stake nets, dol nets, boat and shore seines, scoop nets, beam trawls and otter trawls.

Marketed fresh, frozen, dried, canned and as prawn meat or pulp.

