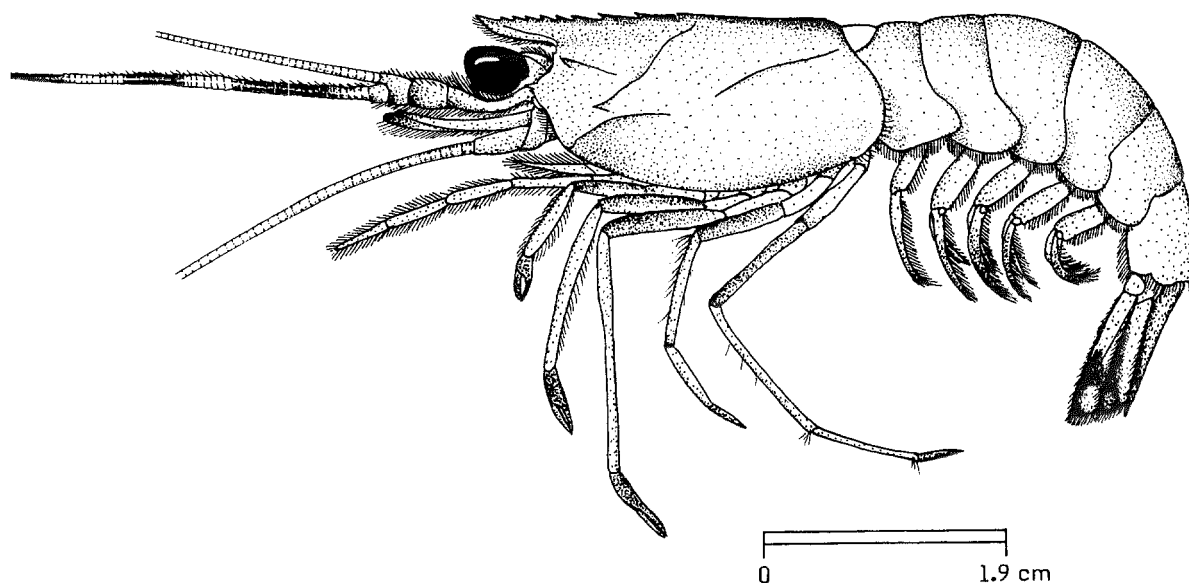


FAO SPECIES IDENTIFICATION SHEETS

FAMILY: SOLENO CERIDAE

FISHING AREA 51
(W. Indian Ocean)*Solenocera choprai* Nataraj, 1945OTHER SCIENTIFIC NAMES STILL IN USE: *Solenocera alticarinata* Kubo, 1949

VERNACULAR NAMES:

FAO : En - Ridgeback shrimp
 Fr - salicoque balafrée
 Sp - Camarón costurén

NATIONAL:

DISTINCTIVE CHARACTERS:

Body hairless except at base of rostrum where it is distinctly pubescent; rostrum reaching middle to 3/4 of eye, convex on ventral margin and with 6 to 9 dorsal teeth; postrostral crest markedly elevated and laminose, reaching posterior margin of carapace and interrupted by a notch just ahead of cervical groove; the latter is deep and reaches or almost dorsal midline; postorbital spine present; suprahepatic and branchiostegal spines absent; pterygostomial angle broadly rounded and unarmed; hepatic crest curved downward anteriorly, with a sharp bending near its anterior end delimiting a round loop just behind frontal margin of carapace; branchiodardic crest oblique, its anterior part curving ventrally; telson trifurcate, with a pair of fixed distolateral spines; fifth pereopod with a coxal spine.

Colour: body, pereopods and pleopods red; antennae banded dark red and white; uropods dark red, except for some white areas.



telson

DISTINGUISHING CHARACTERS OF SIMILAR SPECIES OCCURRING IN THE AREA:

Solenocera crassicornis: postrostral crest low and rounded (markedly elevated and laminose in S. choprai); telson unarmed (with lateral spines in S. choprai); anterior part of hepatic crest differently shaped.

S. hextii: branchiocardiac crest very distinct and L-shaped (oblique in S. choprai); suprahepatic spine present (absent in S. choprai)

Other species of Solenocera: postrostral crest not laminose posterior to cervical groove.

SIZE:

Maximum total length: males, 9.5 cm; females, 13 cm.

GEOGRAPHICAL DISTRIBUTION AND BEHAVIOUR:

Within the area, it occurs off east Africa, from Mozambique to Kenya and along the northwest and east coasts of the Arabian Sea (Pakistan to south India); also reported from the Red Sea and the "Gulf": Further east, it extends as far as the South China Sea and Japan.

Found at depths between 75 and 110 m on soft bottoms; probably also present in shallower waters.

PRESENT FISHING GROUNDS:

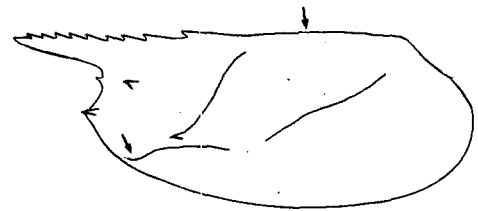
Obtained only in stray catches; found in small numbers among other shrimps within its distributional range.

CATCHES, FISHING GEAR AND FORMS OF UTILIZATION:

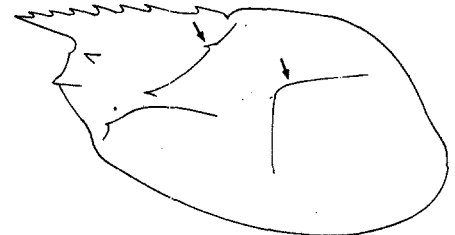
Separate statistics are not reported for this species.

Caught mostly with otter trawls.

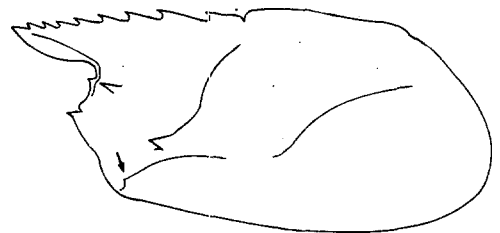
Marketed mainly fresh.



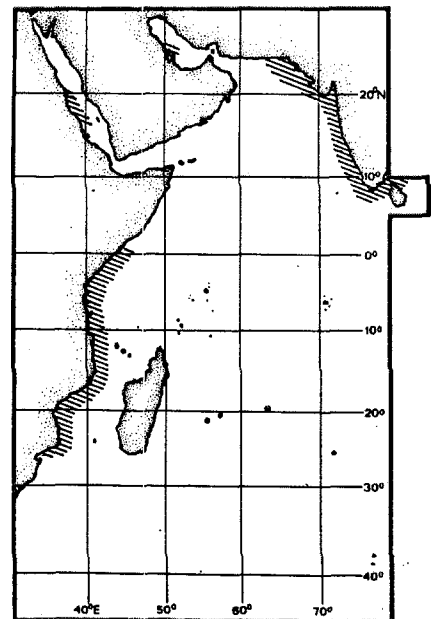
S. crassicornis



S. hextii



S. choprai
carapace

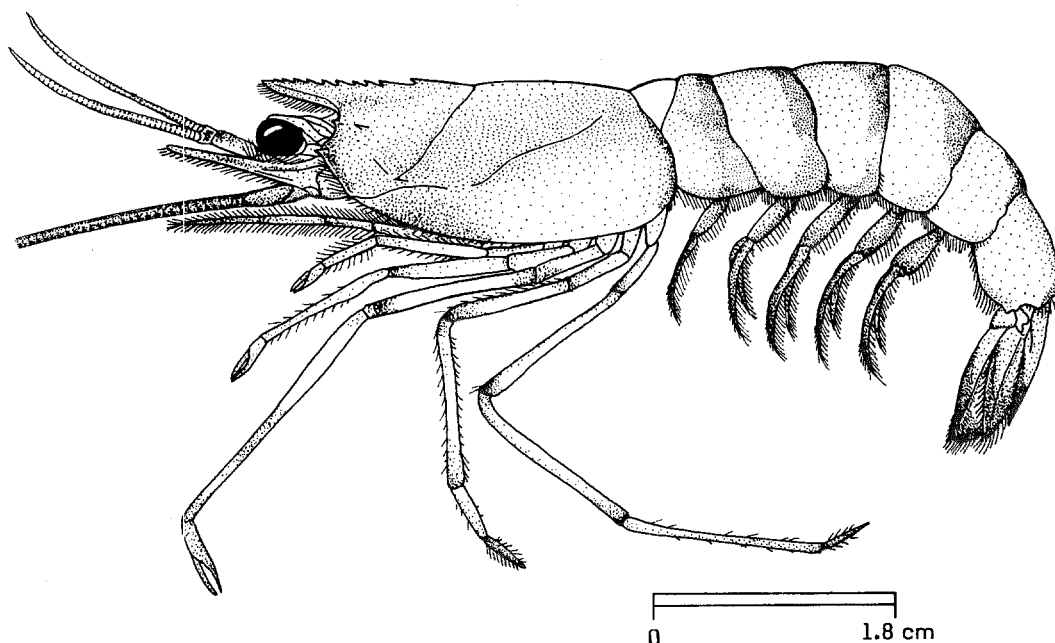


FAO SPECIES IDENTIFICATION SHEETS

FAMILY: SOLENO CERIDAE

FISHING AREA 51
(W. Indian Ocean)Solenocera crassicornis (H. Milne Edwards, 1837)

OTHER SCIENTIFIC NAMES STILL IN USE :

Solenocera indica Nataraj, 1945Solenocera subnuda Kubo, 1949

VERNACULAR NAMES:

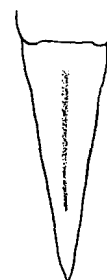
FAO : En - Coastal mud shrimp
 Fr - Salicoque des vases côtières
 Sp - Camarón fanguero de orilla

NATIONAL:

DISTINCTIVE CHARACTERS:

Body hairless except at base of rostrum; rostrum reaching to distal margin of eye or little beyond, armed with 8 to 10 (12) dorsal teeth; its ventral margin slightly convex or straight; postrostral crest low and rounded, reaching posterior margin of carapace; cervical groove deep, reaching to, or nearly to, dorsal midline; postorbital spine present; suprahepatic and branchiostegal spines absent; pterygostomial angle unarmed; hepatic crest curved ventrally on anterior part, delimiting a broadly rounded loop slightly behind frontal margin of carapace; branchiocardic crest slightly sinuous and sloping anteroventrally; telson unarmed, not trifurcate; fifth pereopod without a coxal spine.

Colour: body, pereopods and pleopods reddish-orange to red; posterior margin of each abdominal segment darker; antennae, pleopods and uropods uniform red.



telson

DISTINGUISHING CHARACTERS OF SIMILAR SPECIES OCCURRING IN THE AREA:

None of the other species of *Solenocera* possess the characteristic unarmed telson of *S. crassicornis*. Further distinguishing characters of these species are:

S. choprai: postrostral crest markedly elevated and laminose (low and rounded in *S. crassicornis*); anterior part of hepatic crest differently shaped.

S. hextii: branchiocardiac crest very distinct and L-shaped (slightly sinuous in *S. crassicornis*); suprahepatic spine present (absent in *S. crassicornis*).

SIZE:

Maximum total length: males, 9 cm; females, 14 cm.

GEOGRAPHICAL DISTRIBUTION AND BEHAVIOUR:

Within the area, it occurs in the "Gulf", along the northeast and east coasts of the Arabian Sea from Pakistan to south India and off Sri Lanka. Further east it extends as far as China, Japan and New Guinea.

Inhabits muddy bottoms close to the shore, to depths of at least 85 m; it has been fished in very shallow waters, but usually occurs in more than 20 m depth; the species presents a burrowing behavior.

PRESENT FISHING GROUNDS:

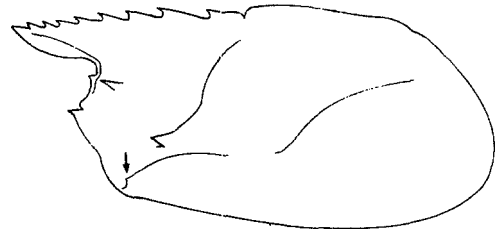
Along the west coast of India near Bombay, the species supports a commercial fishery. Elsewhere, it is often present in the landings, mixed with other shrimps.

CATCHES, FISHING GEAR AND FORMS OF UTILIZATION:

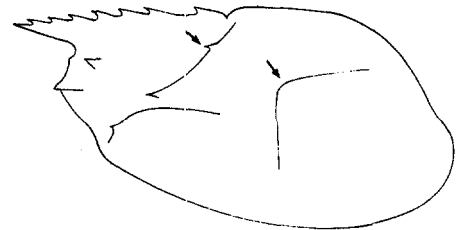
Separate statistics are not reported for this species.

Caught mainly with otter trawls; stake nets and boat seines are also used.

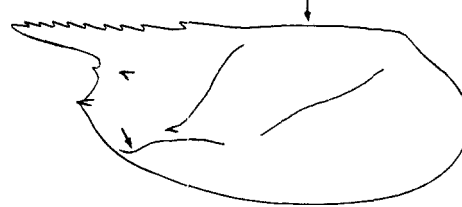
Marketed fresh, frozen, cooked, peeled and canned or as dried shrimp pulp.



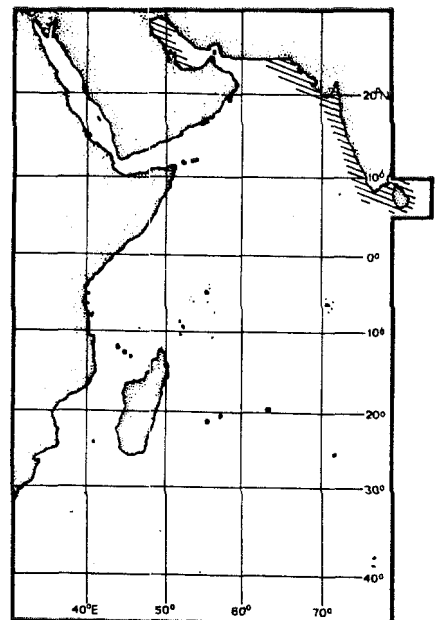
S. choprai



S. hextii



S. crassicornis
carapace

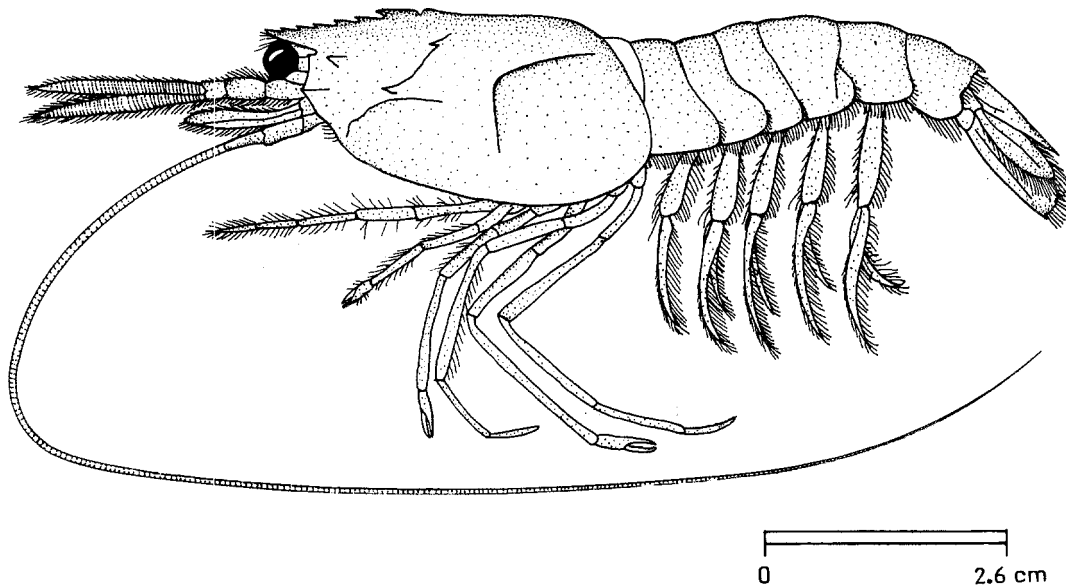


FAO SPECIES IDENTIFICATION SHEETS

FAMILY: SOLENO CERIDAE

FISHING AREA 51
(W. Indian Ocean)*Solenocera hextii* Wood-Mason & Alcock, 1891

OTHER SCIENTIFIC NAMES STILL IN USE: None



VERNACULAR NAMES:

FAO : En - Deep-sea mud shrimp
Fr - Salicoque des vases profondes
Sp - Camarón fanguero de altura

NATIONAL:

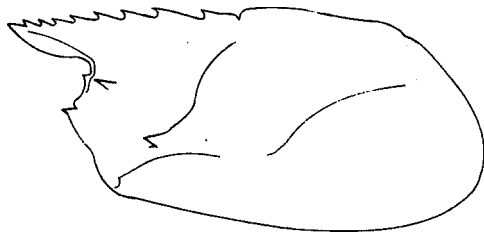
DISTINCTIVE CHARACTERS:

Body hairless, except, the rostrum; rostrum high, reaching to about distal margin of eye, armed with 6 to 8 dorsal teeth, its ventral margin nearly straight; postrostral crest elevated and laminose, reaching posterior margin of carapace and interrupted by a notch just in front of cervical groove (in small specimens, the crest is less developed and the notch may be absent); cervical groove deep, reaching to, or almost, to dorsal midline; postorbital and suprahepatic spines present; branchiostegal and pterygostomial spines absent; hepatic crest curved ventrally on its anterior part, with a sharp bending near its anterior end; branchiocardiac crest very distinct and L-shaped (its posterior half nearly horizontal its anterior half turning ventrally at right angle); telson with a pair of fixed distal lateral spines (trifurcate); fifth pereopod with a coxal spine.

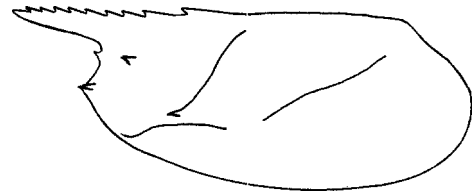
Colour: bright pink.

DISTINGUISHING CHARACTERS OF SIMILAR SPECIES OCCURRING IN THE AREA:

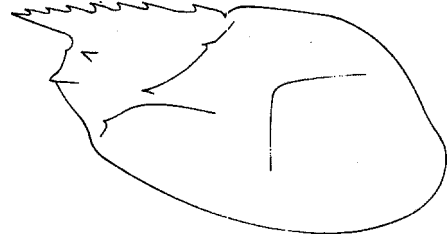
None of the other species of Solenocera have a suprahepatic spine or the characteristic L-shaped branchio-cardiac crest and groove of S. hextii.



S. choprai



S. crassicornis



S. hextii
carapace

SIZE:

Maximum total length: males, 12.7 cm; females, 13.8 cm.

GEOGRAPHICAL DISTRIBUTION AND BEHAVIOUR:

Within the area, it occurs in the Arabian Sea from the Gulf of Aden to the south coast of India. Also present in the Bay of Bengal.

Found at depths between 115 and 500 m on soft bottoms.

PRESENT FISHING GROUNDS:

At present the species is not exploited, but is of potential interest and may become commercially important in the Gulf of Aden and off the southwest coast of India.

CATCHES, FISHING GEAR AND FORMS OF UTILIZATION:

Separate statistics are not reported for this species.

Caught with otter trawls.

Occasionally marketed frozen.

