

Price Monitoring and Analysis Country Brief

Guinea

September-December 2010

Key Messages

- Rice prices in major cities have shown a declining trend in recent months.
- Political and ethnic violence has subsided following a tense election period. Mr Condè was sworn in as the first democratically elected president in Guinea.
- Preliminary estimates of rice harvests forecast a 7% increase in production compared to the 2009 output.
- The WFP Country Programme continues into 2011, providing food transfers to food insecure people.

Background

The total population of Guinea is around 10 million with an annual growth rate of 2%; of these 70% lives with less than 1\$ per day and 17% is estimated to be undernourished.

Economic Indicators	View Data
Total Population (millions) - 2009 (WB)	10.069
Population growth rate - 2009 (WB)	2%
GNI per capita, \$ PPP - 2009 (WB)	940
Population below 1\$ PPP per day - 2003 (MDGI)	70%
Rural population - 2009 (WB)	65%
Agriculture, value added (% of GDP) - 2009 (WB)	17%

Food Consumption	
Undernourished Population - 2005/2007 (FAO)	17%
Cereal share in total dietary energy consumption - 2007 (FAO)	47%
Meat share in total dietary energy consumption	n.a.

Health Indicators	
Pop. with sustainable access to improved sanitation - 2008 (WHO)	19%
Life expectancy at birth (years) both sexes - 2008 (WHO)	54
Pop. with access to improved drinking water sources - 2008 (WHO)	71%
Prevalence of HIV among adults aged >= 15 years - 2009 (WHO)	1.3%

Prices

A slight decline of local rice prices was reported in major cities thanks to the beginning of the harvesting period. In particular local rice prices in Conakry were registered at 5500 FG/Kg in December, recording a 10,8% decline from the 6167 FG/kg average prices of November. In other major cities the price decline was 9.1% in Labe and 10% in Kankan; whereas prices were stable in Nzerekore.

Food Security Situation Assessment

According to GIEWS, access to food is negatively affected by high prices and inflation rates. FAO Hunger map indicates a moderately high prevalence of undernourishment while IFPRI describes the situation as serious hunger.






CURRENT EMERGENCY ASSESSMENT

			FAO/GIEWS CPFS 2010
Exceptional shortfall in aggregate food production supplies	Widespread lack of access	Severe localized food insecurity	

Guinea is not covered by FEWSNET.

[FEWSNET](#)

SCALE OF HUNGER (% of Undernourishment)

					FAO Hunger Map
Very high (>= 35%)	High (25-34%)	Moderately high (15-24%)	Moderately low (5-14%)	Very low (< 5% under.)	

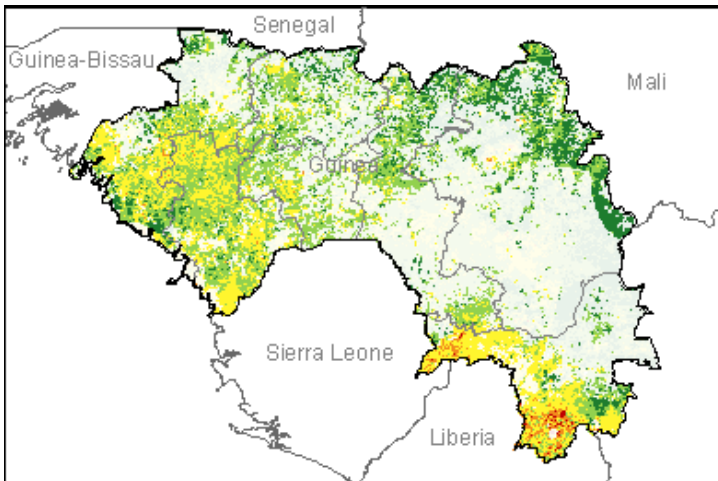
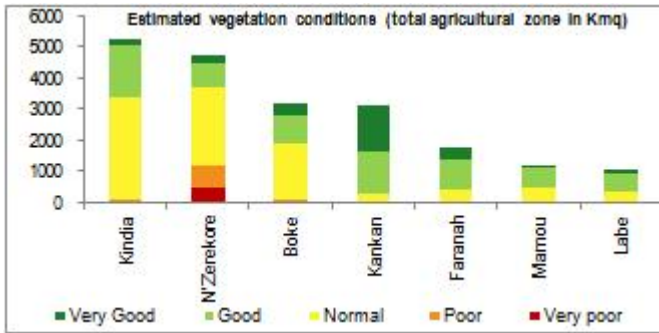
FAO Hunger Map classifies all countries of the world into five based on % of population undernourished.

					IFPRI/2010 GHI
Extremely alarming	Alarming	Serious	Moderate	Low	

Information required to draw this chart is not available.

Vegetation Condition

At the middle of the rainy season, poor to very poor conditions are observed for the provinces of Kindia and N'Zerekore whereas normal to good conditions are observed in the other provinces. The general indicator of vegetation condition provided below is the relative difference between the NDVI for August 2010 and the average of the last 10 years, calculated on the agricultural zones derived from the GLOBCOVER land cover database (2005).



Source: JRC MARS – FoodSec

Crop phase in the reference period

Sowing	Maize (Second Season) - Pre Fouta Zone: Rice (Main Season) - Preforest & Forest Zones: Rice (Second)
Growing	Cassava
Harvesting	Pre Fouta, Coastal Zones: Rice (Second) - Yams - Nord-West, High Niger & Coastal Zones: Sorghum

Natural Disasters, Drought and Conflicts

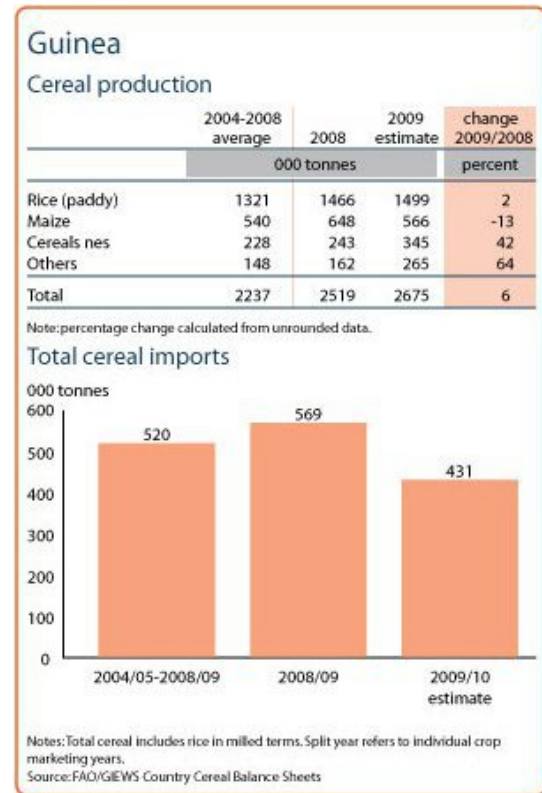
Political and ethnic violence linked to the election were reported. However, the situation in Guinea has improved as Mr. Alpha Condé was sworn in as the country's first democratically elected president. The country is hosting hundreds of refugees from the Ivory Coast who have fled election violence.

Refugees and IDPs	2007	2008	2009
Total in the country	29251	22125	16254
Total outside the country	10213	11517	13749

Source: UNHCR Statistical Online Population Database, United Nations High Commissioner for Refugees (UNHCR), Data extracted on 01/12/2010.

Food Balance Sheet

According to the CILSS –FAO-Government report, the 2010/11 cereal production is estimated at around 2,851,770 tonnes with a rice paddy production of some 1,604,348 tonnes, representing a 7% increase from 2009. The volume of imports for 2010 was estimated at 279,660 metric tons against some 430,000 tonnes in 2009.



Source: GIEWS Country Briefs

Government Policies

No new government policies in agriculture and food security were identified. The Government is being supported by international agencies with food transfers and feeding programmes throughout 2011.

Consumer and market oriented measures	n.a.
Producer oriented measures	n.a.
Trade policy measures	n.a.
Safety net (increased or introduced)	Food transfers and feeding programmes.

Different sources

Current events to watch (Click to see the full report)

- [Health aid failing countries that need it most](#)
- [African anti-malaria initiative offers good model for ...](#)
- [Côte d'Ivoire - post-electoral crisis: Humanitarian Up...](#)
- [Press Conference by Outgoing Chair of Peacebuilding Co...](#)
- [Guinea Conakry: Floods DREF operation n° MDRGN003 Upda...](#)

For more information, contact: Information-for-action@fao.org
Website: www.foodsec.org

Powered By the **GIEWS Workstation**