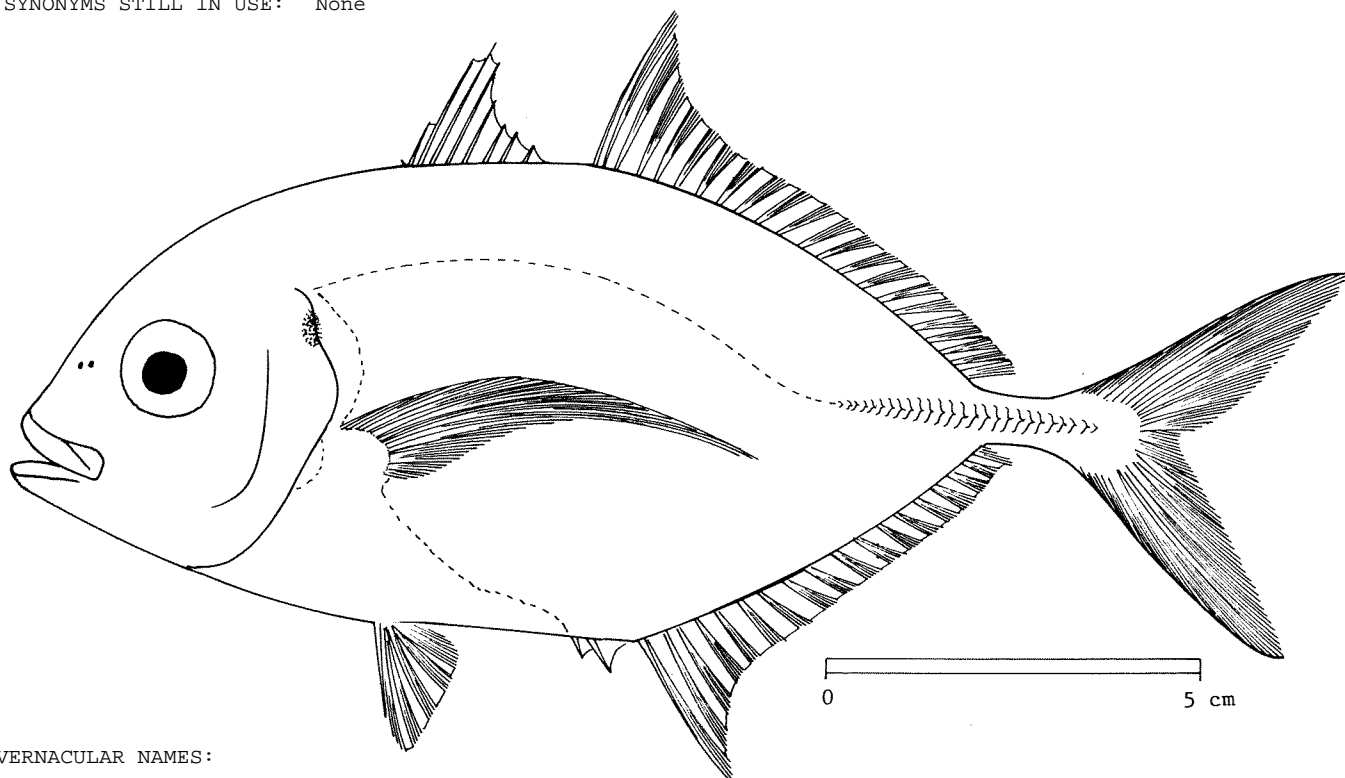


FAMILY: CARANGIDAE

FISHING AREAS 57,71  
(E Ind. Ocean)  
(W Cent. Pacific)*Carangoides malabaricus* (Bloch & Schneider, 1801)

SYNONYMS STILL IN USE: None



## VERNACULAR NAMES:

FAO: En - Malabar cavalla  
Fr -  
Sp -

## NATIONAL:

## DISTINCTIVE CHARACTERS:

A deep-bodied, much compressed carangid. Head profile steep, forming a notch in front of eye, particularly when mouth is open. Eye diameter 2.4 to 4.0 times in head length, less than half length of snout. Upper jaw reaching to below front border of eye. Teeth in jaws in villiform bands, outer teeth somewhat enlarged; vomer and palatines (roof of mouth) and tongue toothed. Gill rakers 23 to 26 on lower limb of 1st arch. 1st dorsal fin with 1 forward-pointing spine (partially embedded in skin) and 8 normal spines; 2nd dorsal fin with 1 spine and 20 to 23 soft rays; 1st dorsal fin ray 0.8 to 1.8 times in head length. Dorsal and anal fin bases equal. Pectoral fins falcate. Anal fin with 2 detached spines, followed by 1 spine and 17 to 18 soft rays. Belly and breast naked, posteriorly to anus anteriorly to head and up to lateral line. Lateral line anteriorly forming a long low arch, twice as long as straight portion, the latter beginning under 13th to 14th soft dorsal fin rays; 10 to 28 feeble scutes.

Colour: green/blue above, silvery white below; a black blotch on gill cover; fins pale yellow, some dark.

DISTINGUISHING CHARACTERS OF SIMILAR SPECIES OCCURRING IN THE AREA:

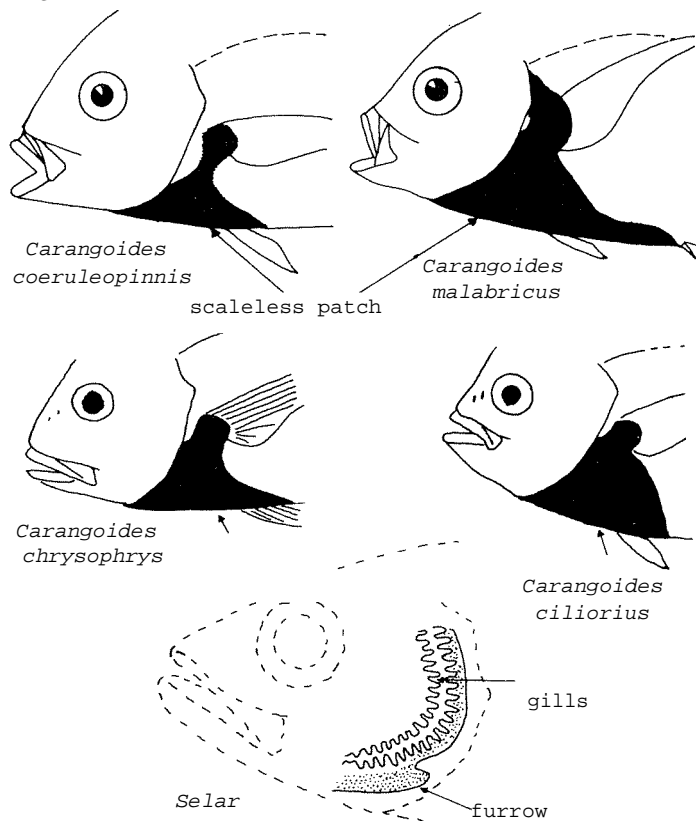
*Carangoides coeruleopinnatus*: scaleless area on breast not extending above level of pectoral fin base; also, 15 to 18 gill rakers on lower part of 1st arch (23 to 26 in *C. malabaricus*).

*Carangoides chrysophrys*: anterior head profile less strongly arched, 19 to 20 soft dorsal fin rays and 15 to 16 soft anal fin rays (20 to 23 and 17 to 18 in *C. malabaricus*); also, scaleless patch on breast extending dorsally only to the pectoral fin base (to lateral line in *C. malabaricus*).

*Carangoides ciliaris*: 20 to 21 soft dorsal fin rays, 16 to 17 soft anal fin rays (20 to 23 and 17 to 18 in *C. malabaricus*); also, scaleless patch on breast not reaching dorsally beyond pectoral fin base and dorsal and anal fin rays filamentous in large fishes

*Caranx* species: enlarged conical teeth in jaws and large, strong scutes along straight portion of lateral line.

Other carangid genera: either lack scutes (*Trachinotus*, etc.), or scales embedded (*Alectis*), or dorsal and anal finlets present (*Decapterus*, etc.) or deep furrow on lower margin of gill opening (*Selar*).



SIZE:

Maximum: 60 cm; common: 30 cm.

GEOGRAPHICAL DISTRIBUTION AND BEHAVIOUR:

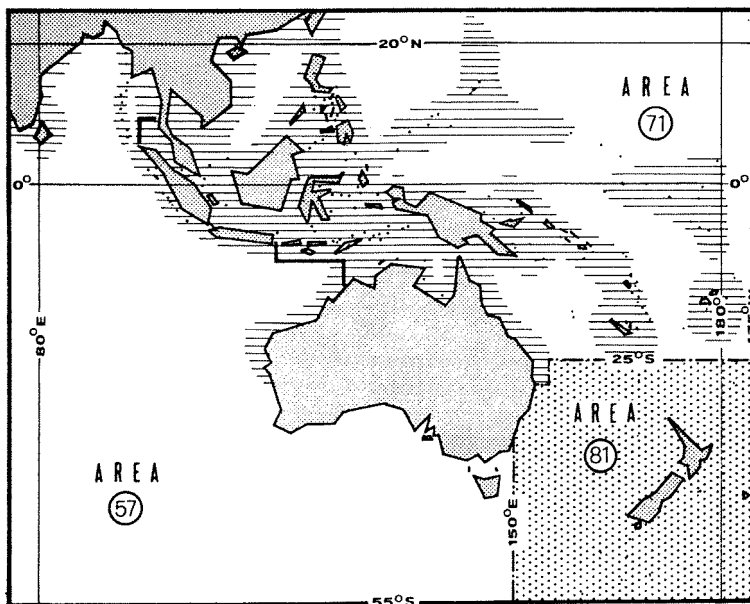
Throughout most warm coastal waters of area.

Inhabits coastal waters and coral and rocky reefs; juveniles inhabit shallow inshore areas.

Feeds on crustaceans and fishes.

PRESENT FISHING GROUNDS:

Coastal waters throughout its range.



CATCHES, MAIN FISHING GEAR AND PRINCIPAL FORMS OF UTILIZATION:

Separate statistics are not reported for this species. The total reported catch of miscellaneous unspecified carangids in 1972 was:

- area 57 (Eastern Indian Ocean): 1 400 tons (India only)
- area 71 (Western Central Pacific): 31 700 tons (Philippines: 26 800 tons; Malaysia: 4 900 tons)

Caught mainly with bottom trawls, gill nets and traps.

Marketed mostly fresh; also dried-salted.

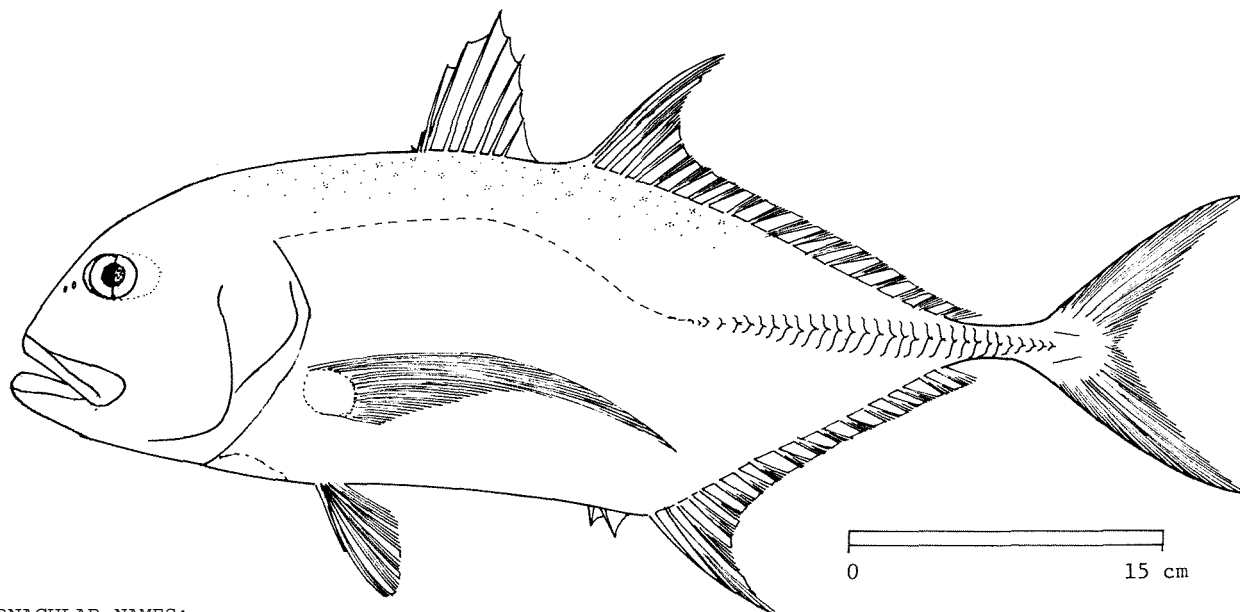
FAO SPECIES IDENTIFICATION SHEETS

FAMILY: CARANGIDAE

FISHING AREAS 57,71  
(E Ind. Ocean)  
(W Cent. Pacific)

*Caranx ignobilis* (Forsskål, 1775)

SYNONYMS STILL IN USE: None



VERNACULAR NAMES:

FAO: En - Yellowfin jack  
Fr -  
Sp -

NATIONAL:

DISTINCTIVE CHARACTERS:

A deep-bodied, slightly compressed robust carangid. Head profile steep and strongly curving above eye; body profile from lower jaw to anal fin nearly straight. Eye diameter 3.3 (10 cm-fish) to 7.5 (115 cm-fish) times in head length. Upper jaw reaching to below posterior eye margin. Upper jaw with an outer row of strong conical teeth, widely spaced in adults, and an inner band of villiform teeth; lower jaw with a single row of strong conical teeth; fine teeth on tongue, vomer and palatines (roof of mouth). Gill rakers 11 to 16 on lower limb of 1st arch. 1st dorsal fin with 1 forward-pointing spine (partially embedded in skin) and 8 normal spines; 2nd dorsal fin with 1 spine and 19 to 20 soft rays; 1st dorsal fin ray 1.4 to 1.7 times in head length. Base of anal fin shorter than that of dorsal fin. Pectoral fins falcate. Anal fin with 2 detached spires, followed by 1 spine and 16 to 17 soft rays. Breast with a small naked patch anterior to pelvic fins and another naked area at base of pectoral fins. Lateral line moderately arched anteriorly, joining straight portion below 6th to 7th soft dorsal fin ray, straight portion somewhat shorter than arched portion; 28 to 30 scutes.

Colour: head and body dusky above, silvery below; larger specimens with small, fine black dots on body, head and operculum; dorsal fins dusky with tip of 1st ray white, anal fin dusky or yellow with tip of 1st ray white; in large specimens males markedly darker than females.

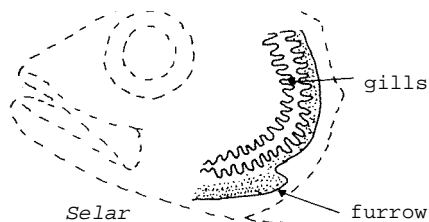
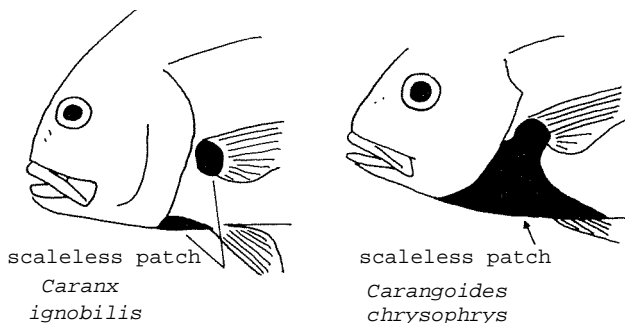
DISTINGUISHING CHARACTERS OF SIMILAR SPECIES OCCURRING IN THE AREA:

*Caranx celetus*: soft anal fin rays 18 to 19 and gill rakers 18 to 20 (16 to 17 and 11 to 16 in *C. ignobilis*).

Other *Caranx* species: breast fully scaled.

*Carangoides* species: jaw teeth usually not enlarged, scutes less strongly developed and breast with a moderate or large scaleless area.

Other carangid genera: either lack scutes (*Traehinotus*, etc.), or scales embedded in skin (*Alectis*), or dorsal and anal finlets present (*Decapterus*, etc.) or deep furrow present on lower margin of gill opening (*Selar*).



SIZE:

Maximum: 115 cm; common: 60 cm.

GEOGRAPHICAL DISTRIBUTION AND BEHAVIOUR:

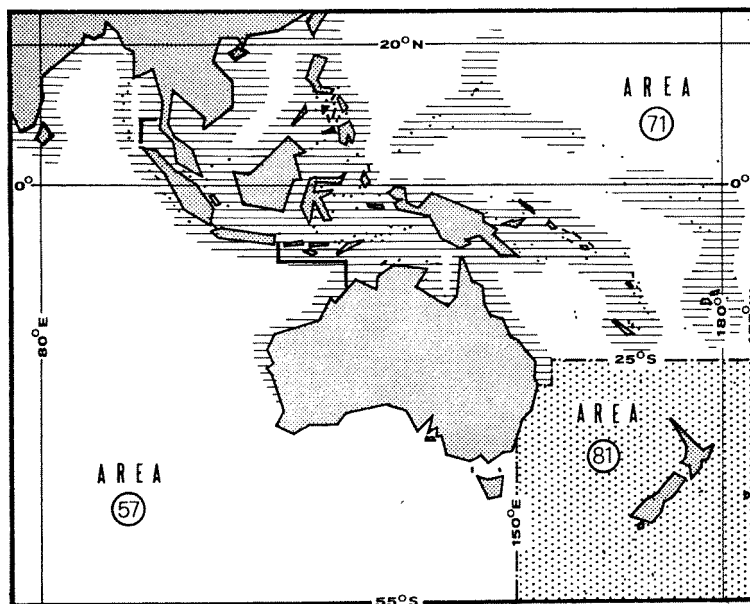
Throughout most warm coastal waters of area.

Inhabits coral and rocky reefs.

Feeds on crustaceans and fishes.

PRESENT FISHING GROUNDS:

Throughout its range.



CATCHES, MAIN FISHING GEAR AND PRINCIPAL FORM OF UTILIZATION:

Separate statistics are not reported for this species. Malaysia reports a statistical category "*Caranx* species" (1972: 5 700 tons). The total reported catch of miscellaneous unspecified carangids in 1972 was:

area 57 (Eastern Indian Ocean): 1 400 tons (India only)  
 area 71 (Western Central Pacific): 31 700 tons (Philippines: 26 800 tons;  
 Malaysia: 4 900 tons)

Caught mainly with gill nets and handlines.

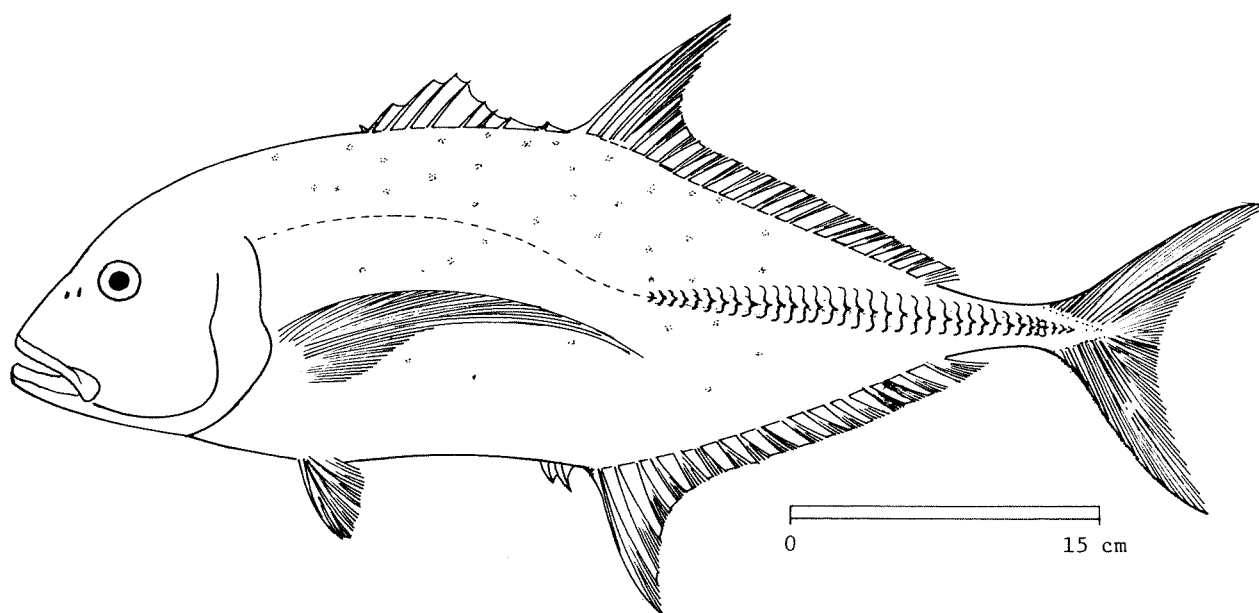
Marketed mostly fresh.

FAMILY: CARANGIDAE

FISHING AREAS 57,71  
(E Ind. Ocean)  
(W Cent. Pacific)

*Caranx melampygus* Valenciennes, 1833

SYNONYMS STILL IN USE: None



VERNACULAR NAMES:

FAO: En - Bluefin jack  
Fr -  
Sp -

NATIONAL:

DISTINCTIVE CHARACTERS:

An oblong, strongly compressed carangid. Head profile fairly steep, sharply curved above eye in adult, becoming straight on back; ventral profile straight. Eye diameter 4.0 to 8.3 times in head length (decreasing with age); length of snout 2.3 to 3.2 times in head length. Upper jaw reaching to below front edge of pupil in juveniles and to front edge of eye in adults. Teeth in upper jaw large, conical, bordering an inner band of fine teeth; lower jaw with a single row of large conical teeth; minute villiform teeth on tongue, vomer and palatines (roof of mouth). Gill rakers 17 to 21 on lower limb of 1st arch. 1st dorsal fin with 1 forward-pointing spine (partially embedded in skin) and 8 normal spines; 2nd dorsal fin with 1 spine and 20 to 24 soft rays. Soft anal and dorsal fin bases approximately equal. Pectoral fins falcate. Anal fin with 2 detached spines, followed by 1 spine and 19 to 20 soft rays. Breast fully scaled. Lateral line moderately arched, becoming straight below 3rd dorsal fin ray. Curved part of lateral line somewhat shorter than straight part; 30 to 40 scutes, the largest 8 to 9 times in body depth.

Colour: body green/blue, darker above, silvery below; tips of dorsal and anal fins white; black spots on back and upper sides and on dorsal and anal fins.

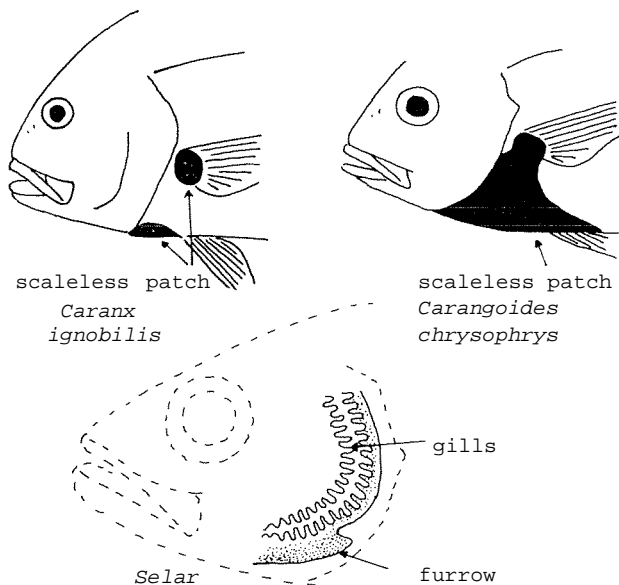
DISTINGUISHING CHARACTERS OF SIMILAR SPECIES OCCURRING IN THE AREA:

*Caranx ignobilis* and *C. celetus*: a scaleless area on breast; also, gill rakers 11 to 16 in *C. ignobilis* (17 to 21 in *C. melampyngus*).

Other *Caranx* species: usually have less than 19 soft anal rays and upper jaw reaching to posterior margin of eye or pupil (to anterior margin in *C. melampyngus*).

*Carangoides* species: jaw teeth usually not enlarged, scutes less strongly developed and breast with a moderate or large scaleless area.

Other carangid genera: either lack scutes (*Trachinotus*, etc.), or scales embedded in skin (*Alectis*), or dorsal and anal finlets present (*Decapterus*, etc.) or deep furrow present on lower margin of gill opening (*Selar*).



SIZE:

Maximum: 100 cm; common: 60 cm.

GEOGRAPHICAL DISTRIBUTION AND BEHAVIOUR:

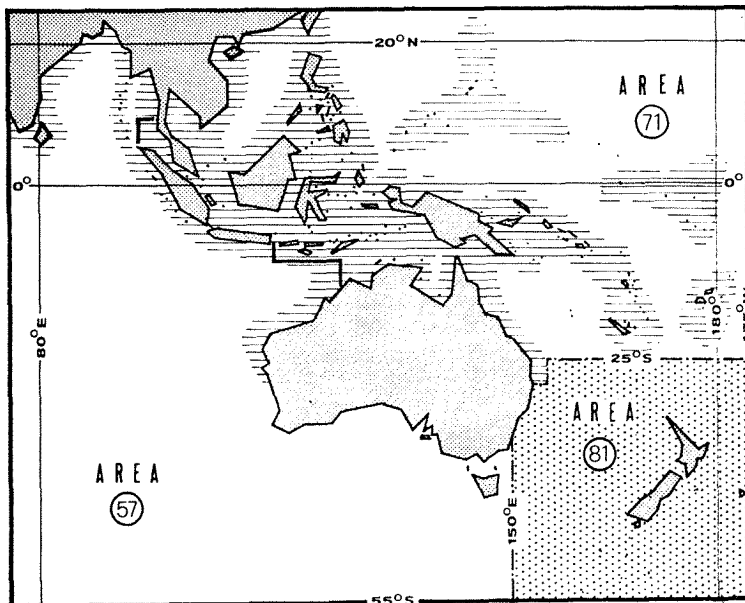
Throughout most warm coastal waters of area.

Inhabits coral and rocky reefs.

Feeds on invertebrates and fishes.

PRESENT FISHING GROUNDS:

Throughout its range.



CATCHES, MAIN FISHING GEAR AND PRINCIPAL FORKS OF UTILIZATION

Separate statistics are not reported for this species. Malaysia reports a statistical category "Caranx species" (1972: 5 700 tons). The total reported catch of miscellaneous unspecified carangids in 1972 was:

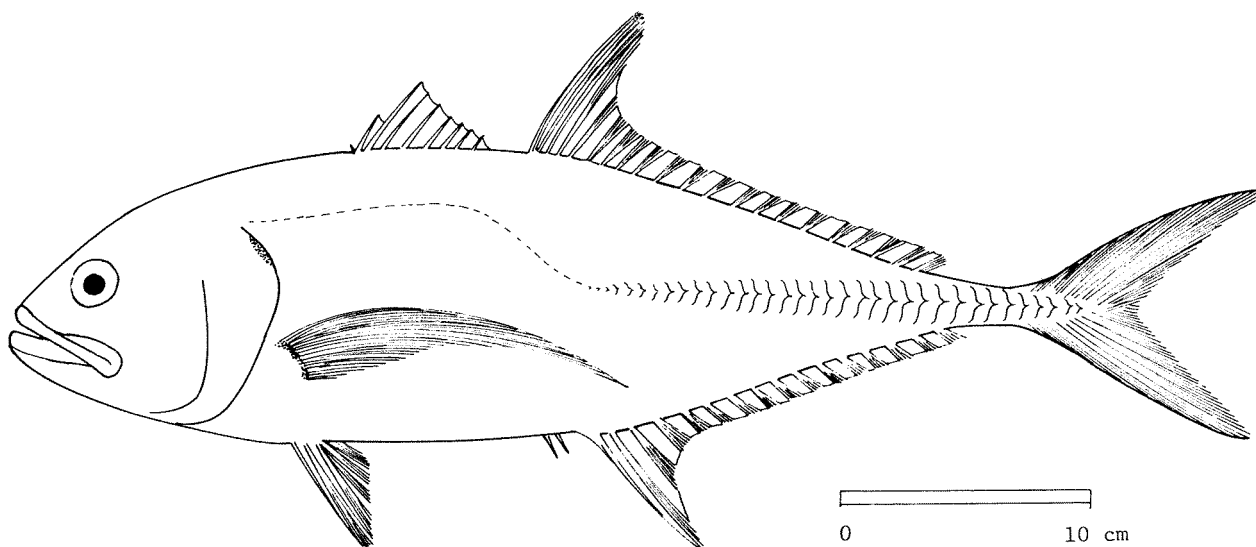
- area 57 (Eastern Indian Ocean): 1 400 tons (India only)
- area 71 (Western Central Pacific): 31 700 tons (Philippines: 26 800 tons; Malaysia: 4 900 tons)

Caught mainly with gill nets and handlines.

Marketed mostly fresh; also dried-salted.

## FAO SPECIES IDENTIFICATION SHEETS

FAMILY: CARANGIDAE

FISHING AREAS 57,71  
(E Ind. Ocean)  
(W Cent. Pacific)*Caranx sexfasciatus* Quoy & Gaimard, 1824SYNONYMS STILL IN USE: *Caranx elacate* (Jordan & Evermann, 1933)

## VERNACULAR NAMES:

FAO: En - Dusky jack  
Fr -  
Sp -

NATIONAL:

## DISTINCTIVE CHARACTERS:

An oblong, moderately compressed carangid; upper and lower body profiles about equal. Eye diameter 3.4 to 5.1 times in head length. Upper jaw reaching to below posterior margin of pupil or eye. Teeth in upper jaw with 1 outer row of conical teeth and an inner band of fine teeth; lower jaw with a single row of conical teeth; fine teeth on vomer and palatines (roof of mouth). Gill rakers 16 to 18 on lower limb of 1st arch. 1st dorsal fin with 1 forward-pointing spine (partially embedded in skin) and 8 normal spines; 2nd dorsal fin with 1 spine and 18 to 21 soft rays. Pectoral fins falcate. Anal fin with 2 detached spines, followed by 1 spine and 14 to 16 soft rays. Breast fully scaled; lateral line strongly arched anteriorly, joining the straight portion under 2nd to 5th soft dorsal fin rays; 24 to 34 scutes on straight portion.

Colour: dusky grey above, silvery below; sometimes with a yellowish tinge; in adults, soft dorsal fin and anal fin dusky with white-tipped lobes, caudal fin dusky, other fins pale; a dark spot on upper edge of gill cover.

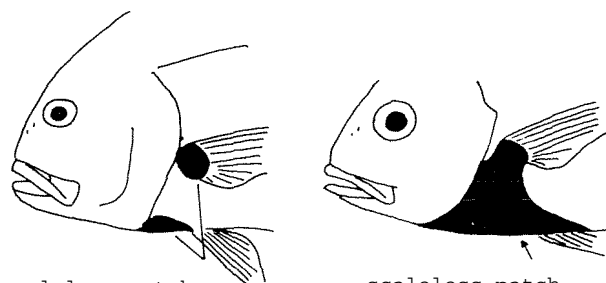
DISTINGUISHING CHARACTERS OF SIMILAR SPECIES OCCURRING IN THE AREA

*Caranx ignobilis* and *C. celetes*: small scaleless patch on breast and at base of pectoral fins; also, lobe of soft dorsal fin not white-tipped in adults.

*Caranx melampygus* and *C. tille*: gill rakers 11 to 16 on lower limb of 1st arch (16 to 18 in *C. sexfasciatus*); also, upper jaw reaching to front margin of pupil or eye in *C. melampygus* and 16 to 18 soft anal fin rays in *C. tille* (14 to 16 in *C. sexfasciatus*).

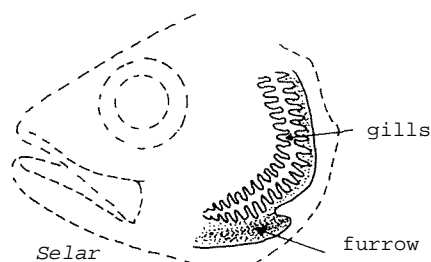
*Carangoides* species: jaw teeth usually not enlarged, scutes less strongly developed and breast with at least a moderate scaleless area.

Other carangid genera: either lack scutes (*Traehinotus*, etc.), or scales embedded in skin (*Alectis*), or dorsal and anal finlets present (*Decapterus*, etc.) or deep furrow present on lower margin of gill opening (*Selar*).



scaleless patches  
*Caranx ignobilis*

scaleless patch  
*Carangoides chrysophrys*



*Selar*

SIZE:

Maximum: 80 cm; common: 50 cm.

GEOGRAPHICAL DISTRIBUTION AND BEHAVIOUR:

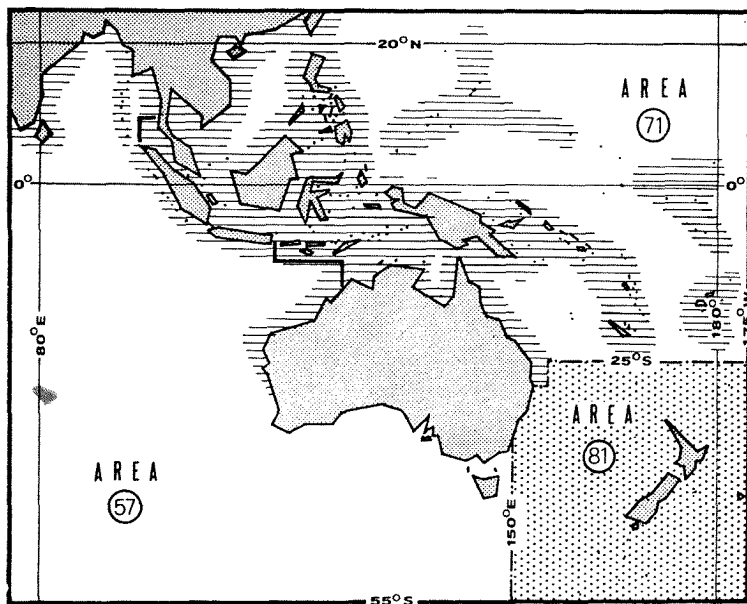
Throughout most warm coastal waters of area.

Inhabits shallow waters of coral and rocky reefs.

Feeds on crustaceans and fishes.

PRESENT FISHING GROUNDS:

Throughout its range.



CATCHES, MAIN FISHING GEAR AND PRINCIPAL FORMS OF UTILIZATION:

Separate statistics for this species are reported by India only (1972: 8 500 tons); Malaysia reports a statistical category "*Caranx* species" (1972: 5 700 tons). The total reported catch of miscellaneous unspecified carangids in 1972 was:

area 57 (Eastern Indian Ocean): 1 400 tons (India only)  
area 71 (Western Central Pacific): 31 700 tons (Philippines: 26 800 tons;  
Malaysia: 4 900 tons)

Caught mainly with handlines, gill nets and purse seines.

Marketed mostly fresh; also dried-salted.

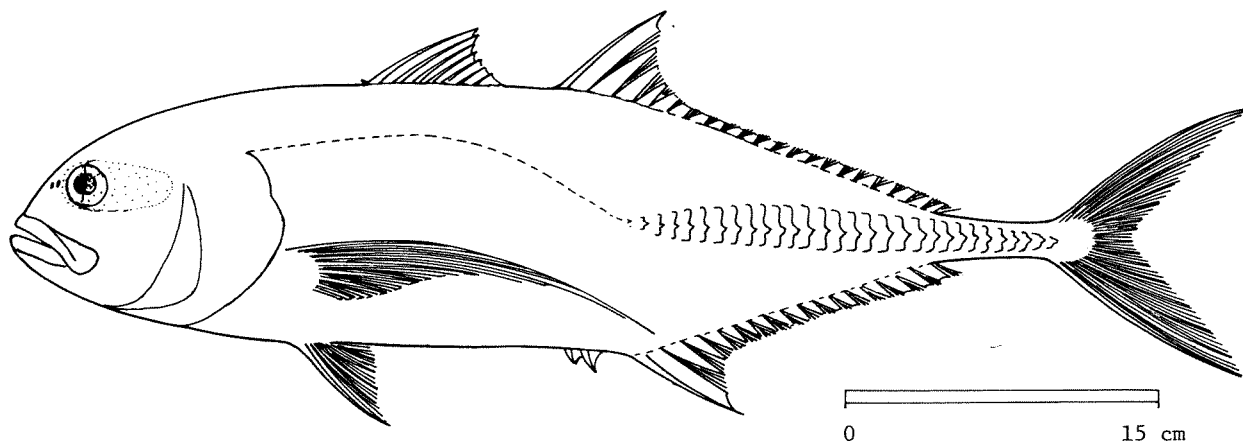
FAO SPECIES IDENTIFICATION SHEETS

FAMILY: CARANGIDAE

FISHING AREAS 57,71  
(E Ind. Ocean)  
(W Cent. Pacific)

*Caranx tille* Valenciennes, 1833

SYNONYMS STILL IN USE: None



VERNACULAR NAMES:

- FAO: En - Tille jack
- Fr -
- Sp -

NATIONAL:

DISTINCTIVE CHARACTERS:

*An oblong, moderately compressed carangid. Head profile strongly arched. Eye diameter 5.7 to 6.5 times in head length. Upper jaw reaching to below posterior margin of eye. Teeth; in upper, jaw with 1 outer row of conical teeth and an inner band of fine teeth; lower jaw with a single row of conical teeth; fine teeth on vomer and palatines (roof of mouth). Gill rakers 11 to 15 on lower limb of 1st arch. 1st dorsal fin with 1 forward-pointing spine (partially embedded in skin) and 7 to 8 spines; 2nd dorsal fin with 1 spine and 19 to 21 soft rays. Pectoral fins falcate. Anal fin with 2 detached spines, followed by 1 spine and 16 to 18 soft rays. Breast fully scaled; lateral line strongly arched anteriorly, becoming straight below 5th to 6th soft dorsal fin rays; 28 to 37 strong scutes on straight portion of lateral line.*

*Colour: dusky blue/green above, silvery blue or yellow/green below; dorsal fins dusky grey; anal fin pale at base, with dusky margin, tip of lobe white; pectoral fins pale with a black axillary patch; a black patch on edge of operculum.*

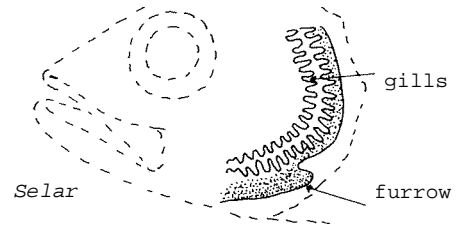
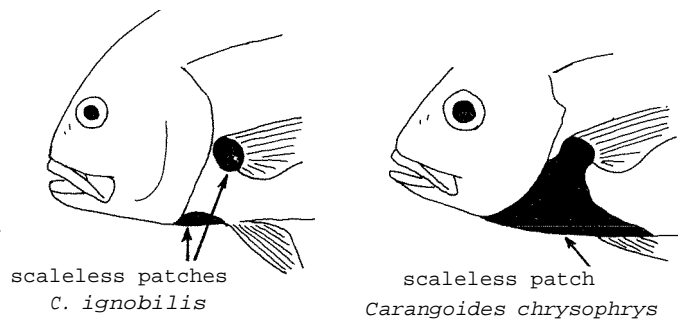
DISTINGUISHING CHARACTERS OF SIMILAR SPECIES OCCURRING IN THE AREA:

*Caranx ignobilis* and *C. celetus*: a scaleless area on breast; also, gill rakers 18 to 20 in *C. celetus* (11 to 15 in *C. tille*).

*Caranx melampygyus* and *C. sexfasciatus*: gill rakers 16 or more; also, upper jaw reaching to front border of eye or pupil in *C. melampygyus* (to hind border of pupil or eye in *C. tille*) and lobe of soft dorsal fin white in *C. sexfasciatus* adults.

*Carangoides* species: jaw teeth usually not enlarged, scutes less strongly developed and breast with moderate or large scaleless area.

Other carangid genera: either lack scutes (*Trachinotus*, etc.), or scales embedded in skin (*Alectis*), or dorsal and anal finlets present (*Decapterus*, etc.) or deep furrow present on lower margin of gill opening (*Selar*).



SIZE:

Maximum: 70 cm; common: 50 cm.

GEOGRAPHICAL DISTRIBUTION AND BEHAVIOUR:

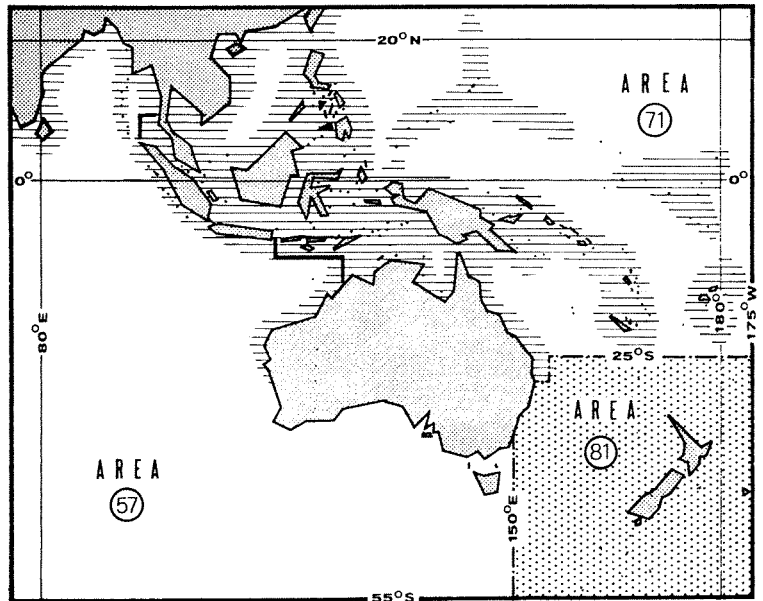
Throughout most warm coastal waters of area.

Inhabits shallow waters of coral and rocky reefs.

Feeds on crustaceans and fishes.

PRESENT FISHING GROUNDS:

Throughout its range.



CATCHES, MAIN FISHING GEAR AND PRINCIPAL FORMS OF UTILIZATION

Separate statistics are not reported for this species. Malaysia reports a statistical category "Caranx species" (1972: 5 700 tons). The total reported catch of miscellaneous unspecified carangids in 1972 was:

area 57 (Eastern Indian Ocean): 1 400 tons (India only)  
 area 71 (Western Central Pacific): 31 700 tons (Philippines: 26 800 tons;  
 Malaysia: 4 900 tons)

Caught mainly with handlines, gill nets and purse seines.

Marketed mostly fresh; also dried-salted.

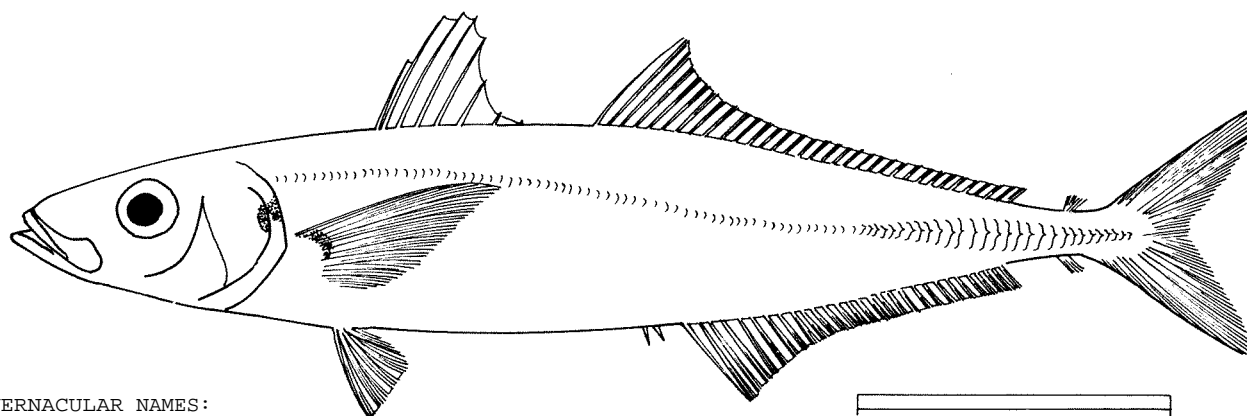
FAO SPECIES IDENTIFICATION SHEETS

FAMILY: CARANGIDAE

FISHING AREAS 57,71  
(E Ind. Ocean)  
(W Cent. Pacific)

*Decapterus macrosoma* Bleeker, 1851

SYNONYMS STILL IN USE: *Decapterus lajang* Bleeker, 1851



VERNACULAR NAMES:

- FAO: En - Layang scad
- Fr -
- Sp -

NATIONAL:

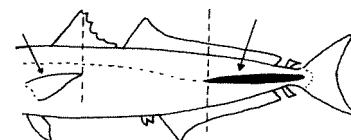
DISTINCTIVE CHARACTERS:

An elongate, fusiform, moderately compressed carangid. Depth of body 5.5 to 6.0 times in standard length. Upper jaw reaching to below front margin of eye. Teeth in jaws in a single series, those of upper jaw confined to anterior end of jaw; vomerine teeth in a transverse strip; palatines toothed. 1st dorsal fin with 8 spines; 2nd dorsal fin with 1 spine and 34 to 35 soft rays. Pectoral fins not falcate, tips reaching to below posterior spines of 1st dorsal fin. Anal fin with 2 detached spines, followed by 1 spine and 28 to 30 soft rays. A single finlet present behind dorsal and anal fins. Lateral line only slightly arched, becoming straight below 15th soft dorsal fin ray; curved portion much longer than straight portion; 25 to 30 small, weak scutes; height of largest scutes distinctly less than eye diameter.

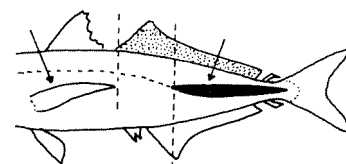
Colour: blue/green above, -silvery white below; fins pale yellow.

DISTINGUISHING CHARACTERS OF SIMILAR SPECIES OCCURRING IN THE AREA:

*Decapterus maruadsi*: a white tip to apex of soft dorsal fin, a deeper body, its depth 3.7 to 4.0 times in standard length (5.5 to 6.0 in *D. macrosoma*), a longer, falcate pectoral fin reaching to below origin of 2nd dorsal fin, and the straight portion of the lateral line beginning below about the middle of the 2nd dorsal fin.



*D. macrosoma*

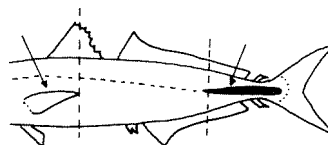


*D. maruadsi*

*Decapterus kurroides*: caudal and soft dorsal fins light red, pupil green.

*Decapterus macarellus*: no teeth on palatines.

*Elagatis bipinnulatus*: no scutes along lateral line; also, blue and yellow bands along body.



*D. macarellus*

Other carangid genera: have either no finlets behind dorsal and anal fins, or more than one (*Megalaspis*).

Scombridae, Gempylidae: usually more than 1 dorsal and anal finlet; also, first 2 anal spines not detached from rest of fin, no scutes on lateral line, but keels usually present on each side of caudal peduncle and base of 1st dorsal fin longer than that of 2nd.

SIZE:

Maximum: 30 cm; common: 25 cm.

GEOGRAPHICAL DISTRIBUTION AND BEHAVIOUR:

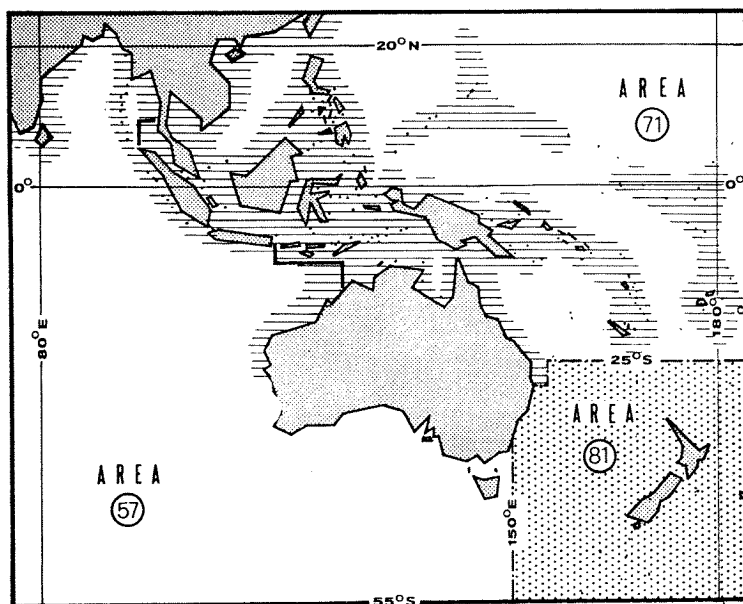
Throughout most warm coastal waters of area.

Inhabits coastal waters.

Feeds on small invertebrates.

PRESENT FISHING GROUNDS:

Coastal waters throughout its range.



CATCHES, MAIN FISHING GEAR AND PRINCIPAL FORMS OF UTILIZATION:

Separate statistics are not reported for this species. The Philippines report a statistical category "*Decapterus* and *Selar*" species (1972: 340 000 tons). The total reported catch of miscellaneous unspecified carangids in 1972 was:

area 57 (Eastern Indian Ocean): 1 400 tons (India only)  
area 71 (Western Central Pacific): 31 700 tons (Philippines: 26 800 tons;  
Malaysia: 4 900 tons)

Caught mainly with purse seines and bottom trawls.

Marketed mostly fresh; also dried-salted.

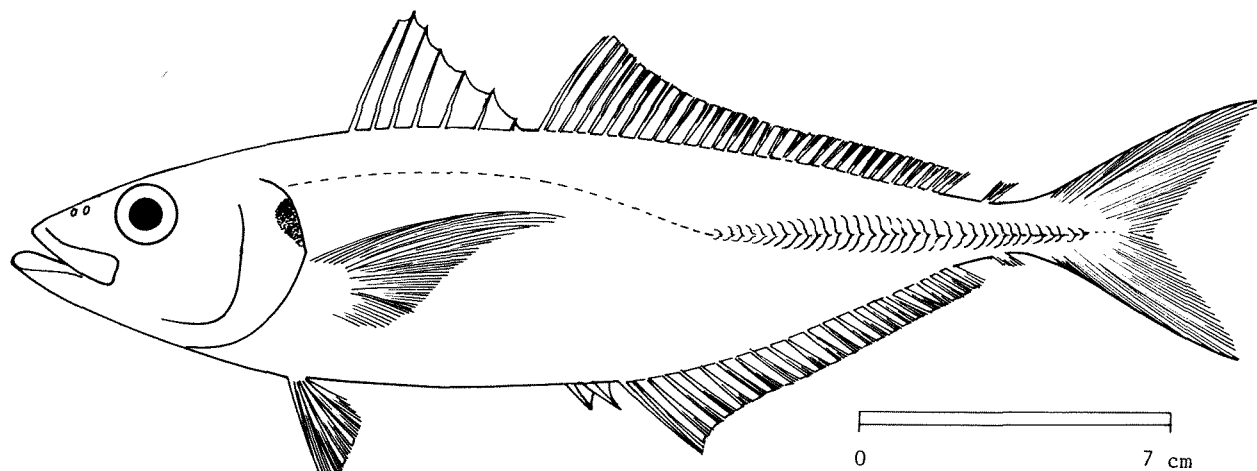
FAO SPECIES IDENTIFICATION SHEETS

FAMILY: CARANGIDAE

FISHING AREAS 57,71  
(E Ind. Ocean)  
(W Cent. Pacific)

*Decapterus maruadsi* (Temminck & Schlegel, 1842)

SYNONYMS STILL IN USE: None



VERNACULAR NAMES:

- FAO: En - Round scad
- Fr -
- Sp -

NATIONAL:

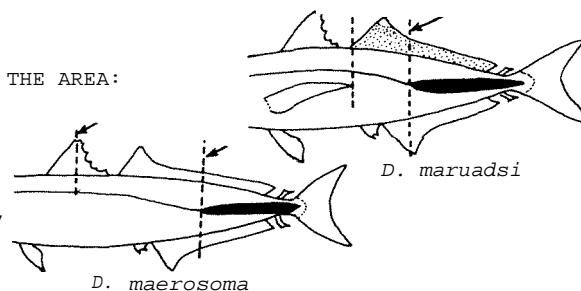
DISTINCTIVE CHARACTERS:

An elongate, fusiform, moderately compressed carangid. Depth of body 3.7 to 4.0 times in standard length. Upper jaw reaching to just below front margin of eye. Teeth in jaws in a single series, those of upper jaw confined to anterior end of jaw; vomerine teeth in a transverse strip; palatines toothed. 1st dorsal fin with 7 to 8 spines; 2nd dorsal fin with 1 spine and 32 to 33 soft rays. Pectoral fins falcate, tips reaching to below origin of 2nd dorsal fin. Anal fin with 2 detached spines, followed by 1 spine and 28 to 29 soft rays. A single finlet behind dorsal and anal fins. Lateral line slightly arched, becoming straight below 12th to 13th dorsal fin rays; curved portion longer than straight portion; 32 to 38 moderate scutes; height of largest scutes about 3/4 of eye diameter.

Colour: green to blue/green above, silvery white below; dorsal, pectoral and caudal fins pale yellow; anterior apex of 2nd dorsal fin white; a black spot on edge of operculum; pupil black.

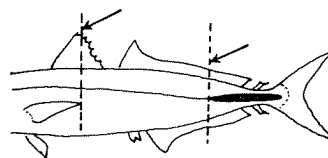
DISTINGUISHING CHARACTERS OF SIMILAR SPECIES OCCURRING IN THE AREA:

*Decapterus maerosoma*: pectoral fin much shorter, reaching to below posterior spines of 1st dorsal fin, body much more slender and less compressed, its depth 5.5 to 6.0 in standard length (3.7 to 4.0 in *D. maruadsi*), and the straight portion of the lateral line beginning below the posterior half of the 2nd dorsal fin.



*Decapterus kurroides*: caudal and soft dorsal fins light red, pupil green.

*Decapterus macarellus*: pectoral fin short, reaching only to below posterior spines of 1st dorsal fin; also, body more slender, its depth 5.5 times in standard length (3.7 to 4.0 in *D. maruadsi*), and lateral line almost straight.



*D. macarellus*

*Elagatis bipinnulatus*: no scutes along lateral line; also, blue and yellow bands along body.

Other carangid genera: have either no finlets behind dorsal and anal fins or more than one (*Megalaspis*).

Scombridae, Gempylidae: usually more than 1 dorsal and anal finlet; also, first 2 anal spines not detached from rest of fin, no scutes on lateral line, but keels usually present on each side of caudal peduncle and base of 1st dorsal fin longer than that of 2nd.

#### SIZE:

Maximum: 35 cm; common: 25 cm.

#### GEOGRAPHICAL DISTRIBUTION AND BEHAVIOUR:

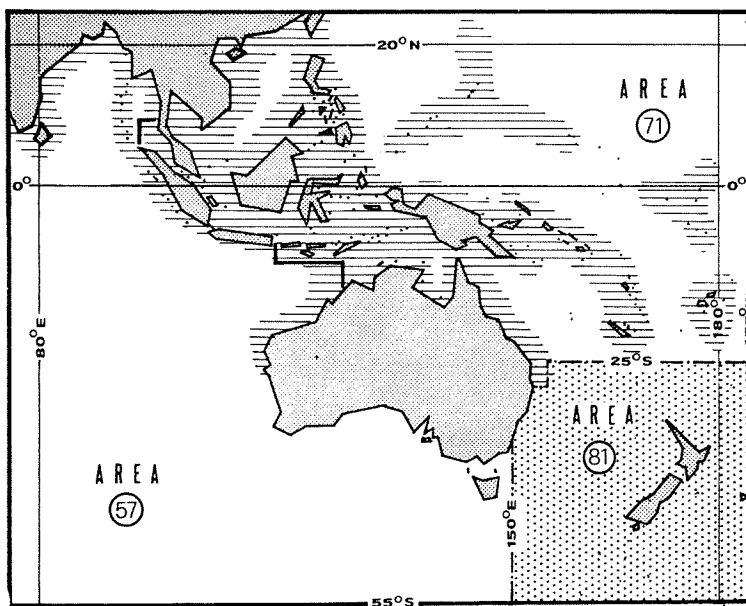
Throughout most warm coastal waters of area.

Inhabits coastal waters, normally down to 20 m.

Feeds on pelagic and bottom-living animals.

#### PRESENT FISHING GROUNDS:

Throughout its range.



#### CATCHES, MAIN FISHING GEAR AND PRINCIPAL FORMS OF UTILIZATION:

Separate statistics are not reported for this species. The Philippines report a statistical category "*Decapterus* and *Selar*" species (1972: 340 000 tons). The total reported catch of miscellaneous unspecified carangids in 1972 was:

area 57 (Eastern Indian Ocean): 1 400 tons (India only)  
area 71 (Western Central Pacific): 31 700 tons (Philippines: 26 800 tons;  
Malaysia: 4 900 tons)

Caught mainly with purse seines and bottom trawls.

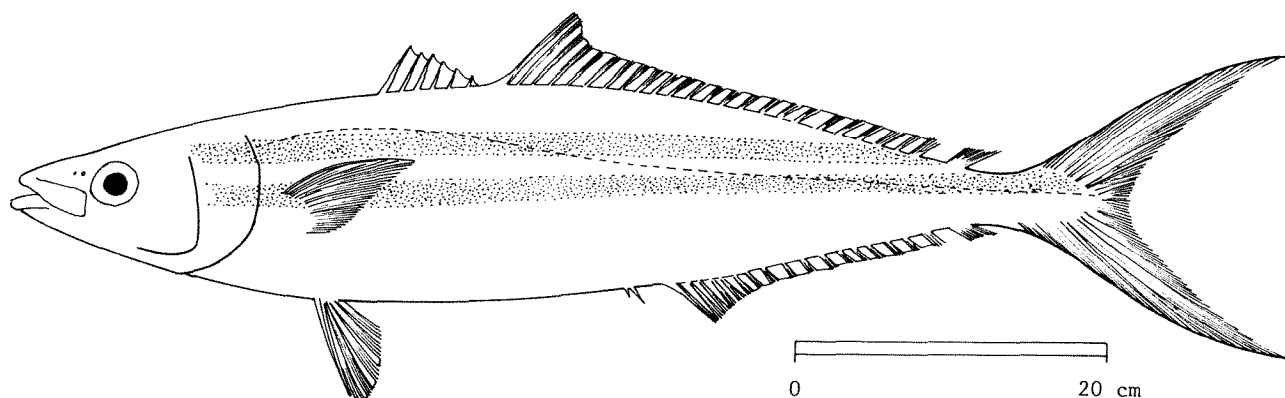
Marketed mostly fresh; also dried-salted and used as fish bait.

## FAO SPECIES IDENTIFICATION SHEETS

FAMILY: CARANGIDAE

FISHING AREAS 57,71  
(E Ind. Ocean)  
(W Cent. Pacific)*Elagatis bipinnulatus* (Quoy & Gaimard, 1824)

SYNONYMS STILL IN USE: None



## VERNACULAR NAMES:

FAO: En - Rainbow runner  
Fr -  
Sp -

## NATIONAL:

## DISTINCTIVE CHARACTERS:

An elongate, almost fusiform carangid, with pointed head. Eye diameter 6.0 times in head length. Upper jaw not reaching to below eye. Bands of small villiform teeth in jaws; minute teeth on vomer and palatines (roof of mouth) and tongue. Gill rakers 25 to 26 on lower limb of 1st arch. 1st dorsal fin with 6 spines; 2nd dorsal fin with 1 spine and 24 to 27 soft rays. Anal fin base much shorter than soft dorsal fin base. One 2-rayed finlet present behind anal and dorsal fins. Pectoral fins not falcate, shorter than head. Anal fin with 2 detached spines, followed by 1 spine and 15 to 17 soft rays. Breast scaled. Lateral line slightly arched anteriorly; no scutes present.

Colour: blue/green above, silvery white below; two parallel blue bands on sides with a yellow band between them; fins yellow; bands may disappear after death.

DISTINGUISHING CHARACTERS OF SIMILAR SPECIES OCCURRING IN THE AREA:

*Decapterus* species: scutes present on posterior part of lateral line; also, no blue and yellow bands on body.

*Megalaspis* species: 8 to 9 finlets behind dorsal and anal fins.

Other carangid genera: have either no finlets behind dorsal and anal fins, or more than one (*Megalaspis*, *Scomberoides*); also, rarely so slender.

*Rachycentron canadus*: no finlets behind dorsal and anal fins.

SIZE:

Maximum: 90 cm; common: 60 cm.

GEOGRAPHICAL DISTRIBUTION AND BEHAVIOUR:

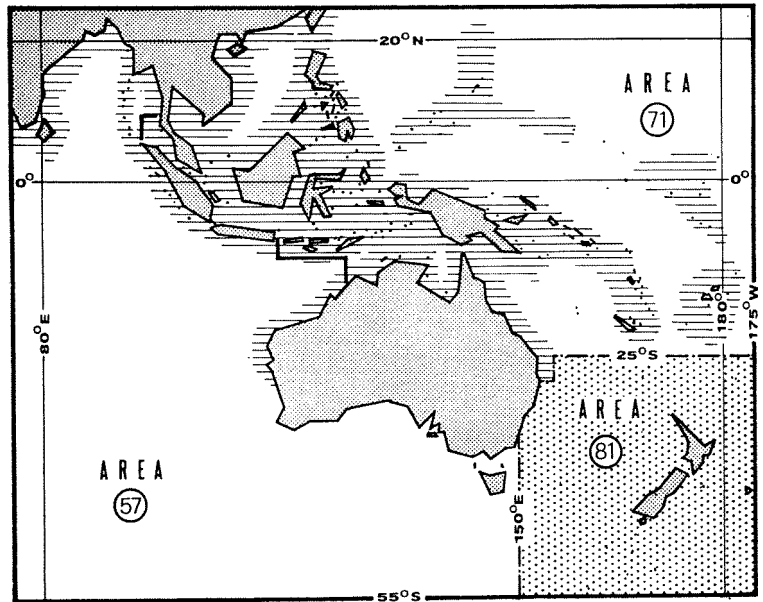
Throughout most warm coastal waters of area.

Inhabits coral and rocky reefs.

Feeds on crustaceans and fishes.

PRESENT FISHING GROUNDS:

Throughout its range.



CATCHES, MAIN FISHING GEAR AND PRINCIPAL FORMS OF UTILIZATION:

Separate statistics are not reported for this species. The total reported catch of miscellaneous unspecified carangids in 1972 was:

area 57 (Eastern Indian Ocean): 1 400 tons (India only)

area 71 (Western Central Pacific): 31 700 tons (Philippines: 26 800 tons;  
Malaysia: 4 900 tons)

Caught mainly with handlines, gill nets and traps.

Marketed mostly fresh.