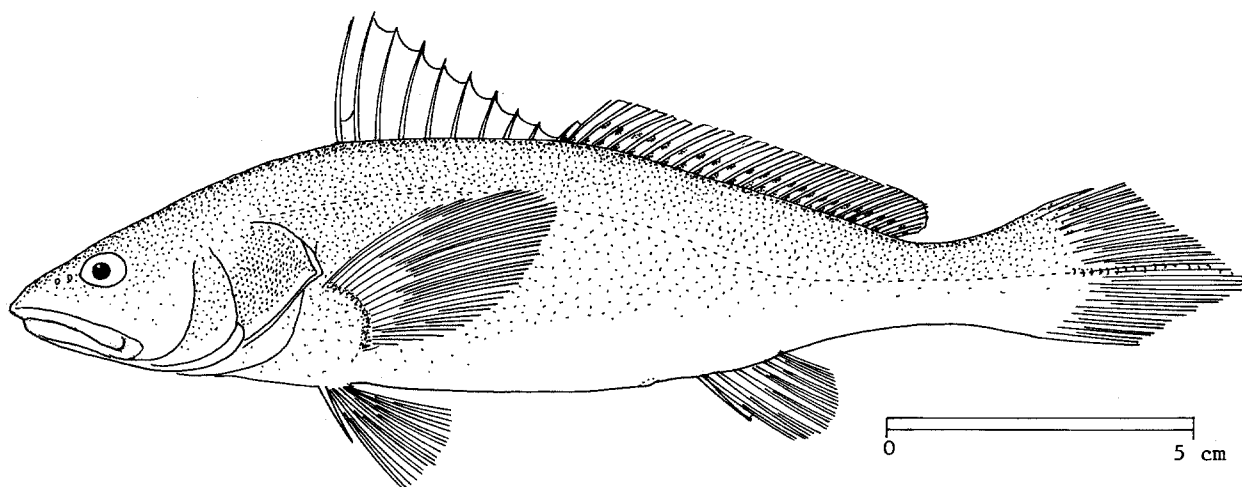


FAO SPECIES IDENTIFICATION SHEETS

FAMILY: SCIAENIDAE

FISHING AREAS 57,71
(E Ind. Ocean)
(W Cent. Pacific)*Chrysochir aureus* (Richardson, 1846)

SYNONYMS STILL IN USE: *Chrysochir aureus*: Trewavas & Yazdani, 1966
Sciaena ophiceps Alcock, 1889
Johnius birtwistlei Fowler, 1933
Pseudosciaena acuta Tang, 1937
Nibeaa acuta: Lin, 1938; Chu, Lo & Wu, 1963



VERNACULAR NAMES:

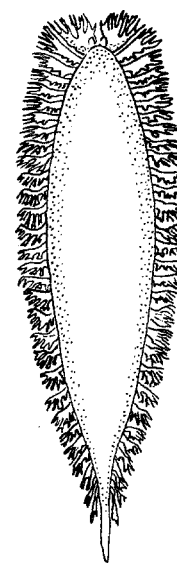
FAO: En - Reeve's croaker
 Fr -
 Sp -

NATIONAL:

DISTINCTIVE CHARACTERS:

A rather slender species with an acute snout and large, nearly horizontal and inferior mouth; upper jaw extending back to below hind margin of eye, overshooting the lower jaw in front; lower jaw more than 1/2 of head length. Teeth differentiated into large and small in both jaws; the large forming outer series in upper jaw, with 1 or 2 canine teeth (twice the length of enlarged teeth) at tip of jaw; large teeth in inner series in lower jaw, but no lower canine teeth. Lower gill rakers 8 to 9, the first 2 to 5 reduced to short stumps. Swimbladder carrot-shaped, with 27 to 30 pairs of arborescent appendages, none entering head. Dorsal fin with 10 spines, followed by a notch, second part of the fin with 1 spine and 26 to 27 soft rays; pectoral fin long; anal fin with 2 spines and 6 to 7 soft rays, the 2nd spine rather weak, about 1/2 the length of the soft rays; caudal fin pointed. Scales cycloid (smooth) on snout and below eye, elsewhere finely ctenoid (slightly rough to touch); lateral line scales reaching to tip of caudal fin.

Colour: metallic blue above shading to silvery below. Pectoral fins yellow, other fins grey suffused with orange.

swimbladder
ventral view

DISTINGUISHING CHARACTERS OF SIMILAR SPECIES OCCURRING IN THE AREA:

Otolithes and *Pterotolithus* species: mouth terminal or lower jaw projecting; canine teeth present also in lower jaw.

Nibeia species: 2nd anal fin spine long and strong, and swimbladder with first pair of appendages reaching forward into head.

Other croaker species: canine teeth either absent, weak or equally strong in both jaws (one or two pairs of canine teeth in upper jaw only in *C. aureus*).

SIZE:

Maximum: 31 cm; common: 20 to 25 dm.

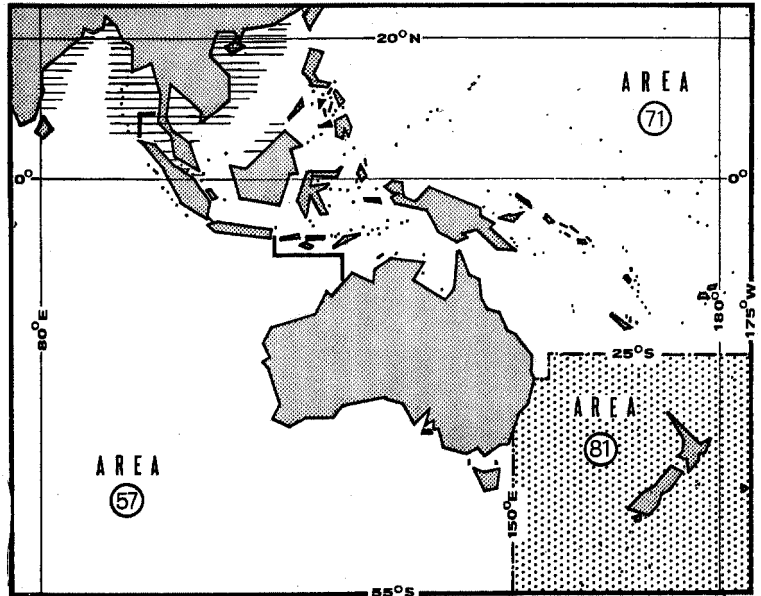
GEOGRAPHICAL DISTRIBUTION AND BEHAVIOUR:

Bay of Bengal to southern China (Kwaag-tung).

Inhabits shallow coastal waters.

PRESENT FISHING GROUNDS:

Coastal waters, throughout its range.



CATCHES, MAIN FISHING GEAR AND PRINCIPAL FORMS OF UTILIZATION:

Separate statistics are not recorded for this species within the area. The total reported catch of unclassified croakers and drums in 1972 was:

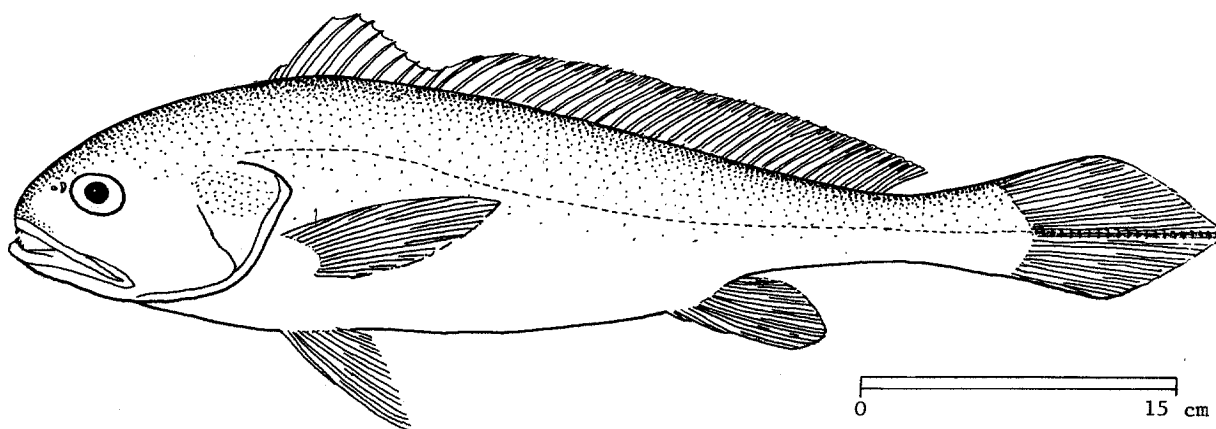
area 57 (Eastern Indian Ocean): 41 900 tons (India only)
area 71 (Western Central Pacific): 21 400 tons (Philippines: 16 900 tons;
Malaysia: 4 500 tons)

Caught with bottom trawls, gill nets and handlines.

Marketed fresh; also dried-salted; swimbladder dried.

FAO SPECIES IDENTIFICATION SHEETS

FAMILY: SCIAENIDAE

FISHING AREAS 57,71
(E Ind. Ocean)
(W Cent. Pacific)*Collichthys crocea* (Richardson, 1846)SYNONYMS STILL IN USE: *Pseudosciaena crocea*: C.Y. Chu, 1960; Chu, Lo & Wu, 1963
Pseudosciaena amblyiceps: Bleeker, 1863

VERNACULAR NAMES:

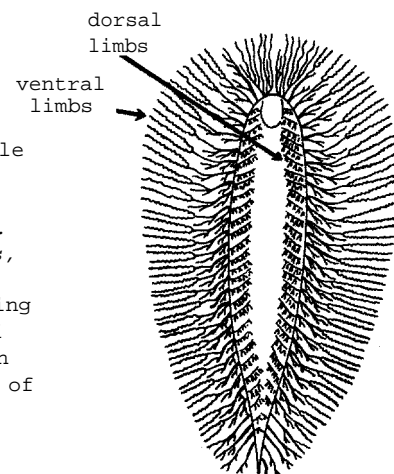
FAO: En - Large yellow croaker
Fr -
Sp -

NATIONAL:

DISTINCTIVE CHARACTERS:

A large croaker, with a rather blunt snout and rounded upper profile of head; mouth large, terminal; upper jaw reaching back to behind eye, lower jaw with a toothed knob at tip. Teeth differentiated into large and small in both jaws, but no canine teeth. Lower gill rakers 16 to 19. Swimbladder carrot-shaped, with 27 to 32 pairs of arborescent appendages, the first entering the head, the others with a dorsal limb branching on the dorso-lateral surface of the main bladder and a ventral limb branching around the viscera, with a long ventral fork of two equal prongs. Dorsal fin with 9 to 10 spines, followed by a low notch, second part of the fin with no spine and 30 to 35 soft rays; pectoral fin moderate, about 3/4 of head length; anal fin with 2 spines and 7 to 9 soft rays, the 2nd spine weak; caudal fin pointed. Scales cycloid (smooth) on head and above pectoral fin, elsewhere ctenoid (rough to touch); lateral line scales reaching to tip of caudal fin.

Colour: body yellow, darker above and golden sheen below; ventral scales yellow (luminous organs); fins all yellow; lips sometimes red; lining of body cavity light dusky grey.

swimbladder
dorsal view

DISTINGUISHING CHARACTERS OF SIMILAR SPECIES OCCURRING IN THE AREA:

Other *Collichthys* species with yellow luminous patches on belly: of smaller size and have either fewer soft dorsal fin rays (28 to 29; 30 to 35 in *C. crocea*) or more soft anal fin rays (9 to 10 or 11 to 13; 7 to 9 in *C. crocea*).

All other croakers: lack yellow luminous patches on belly.

SIZE:

Maximum: 80 cm; common: 60 cm.

GEOGRAPHICAL DISTRIBUTION AND BEHAVIOUR:

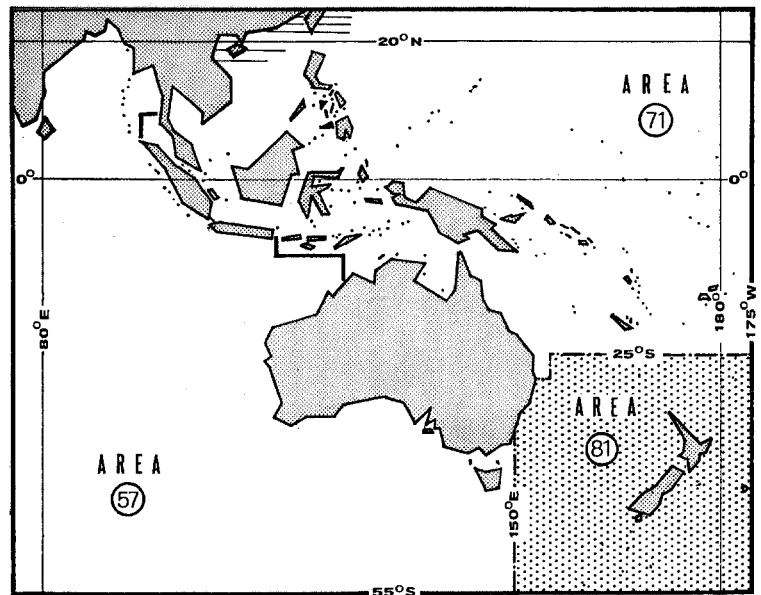
Chinese coast.

Inhabits coastal waters and estuaries; a seasonal migratory species, spawning in spring and autumn in turbid waters, close to river estuaries.

Feeds on crustaceans and fishes.

PRESENT FISHING GROUNDS:

Shallow waters, along the Chinese coast.



CATCHES, MAIN FISHING GEAR AND PRINCIPAL FORMS OF UTILIZATION:

Separate statistics are not recorded for this species within the area. The total reported catch of unclassified croakers and drums in 1972 was:

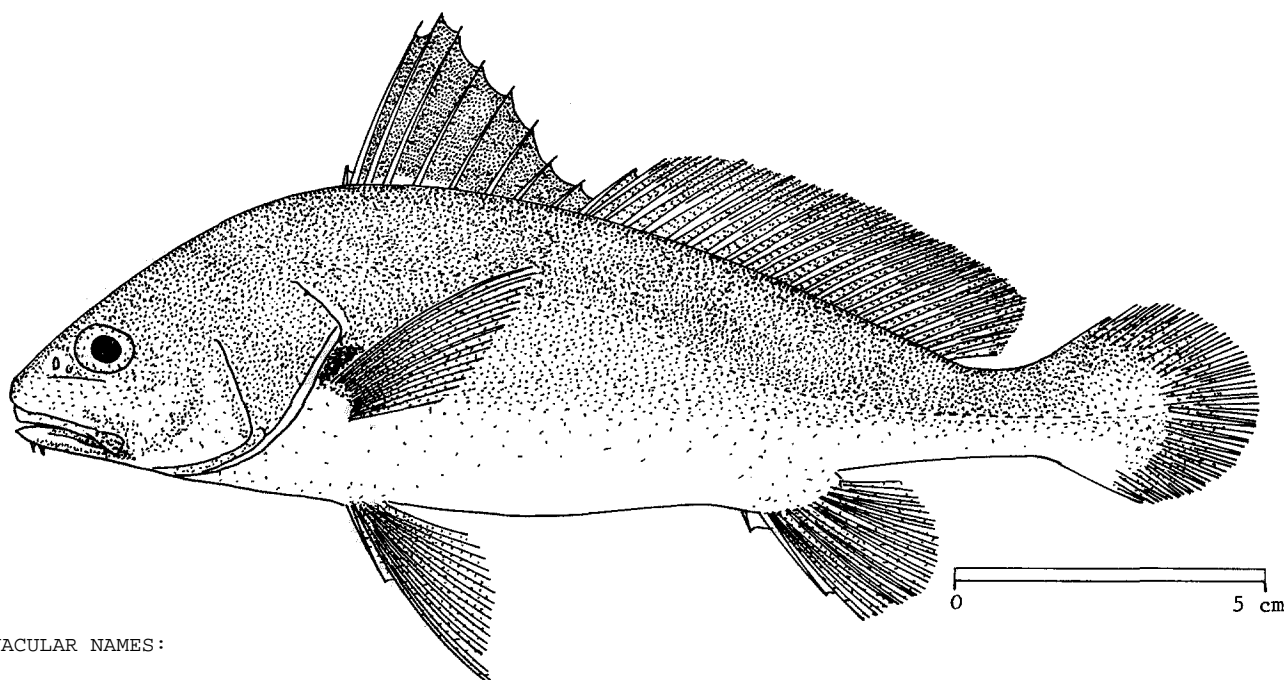
area 57 (Eastern Indian Ocean): 41 900 tons (India only)
area 71 (Western Central Pacific): 21 400 tons (Philippines: 16 900 tons;
Malaysia: 4 500 tons)

Caught with bottom trawls, longlines and handlines.

Marketed fresh; also dried-salted; swimbladder dried.

FAO SPECIES IDENTIFICATION SHEETS

FAMILY: SCIAENIDAE

FISHING AREAS 57,71
(E Ind. Ocean)
(W Cent. Pacific)*Daysciaena albida* (Cuvier, 1830)SYNONYMS STILL IN USE: *Sciaena albida*: Day, 1876
Daysciaena albida: Talwar, 1970; Trewavas, 1971
Dendrophysa hooghliensis Sinha & Rao, 1969

VERNACULAR NAMES:

FAO: En - Two-bearded croaker
Fr -
Sp -

NATIONAL:

DISTINCTIVE CHARACTERS:

A fairly large species, with an oblong body, its depth 3 to 4 times in its length (excluding caudal fin); snout rounded and projecting only slightly beyond tip of upper jaw; mouth terminal or only slightly inferior; lower jaw a little less than 1/2 of head length; a pair of small, tapering barbels on chin. Teeth differentiated into large and small, especially in upper jaw, the large forming the outer series (inner series in lower jaw); no canine teeth. Lower gill rakers 7 to 9, with several toothed plates below. Swimbladder carrot-shaped, with about 17 pairs of appendages, one posterior simple, the rest arborescent, the anterior sending some of its twiglets into the head. Dorsal fin with 9 to 10 spines, followed by a deep notch, second part of the fin with 1 spine and 23 to 26 soft rays; pectoral fin moderate, about 3/4 of head length; anal fin with 2 spines, and 7 soft rays, the 2nd spine long and strong, up to 1/2 of head length; caudal fin bluntly rhomboid in adults. Scales cycloid (smooth) on front part of head, elsewhere ctenoid (rough to touch); lateral line scales reaching to tip of caudal fin.

Colour: in preserved fishes, faint darker spots in oblique series along scale rows in some specimens.

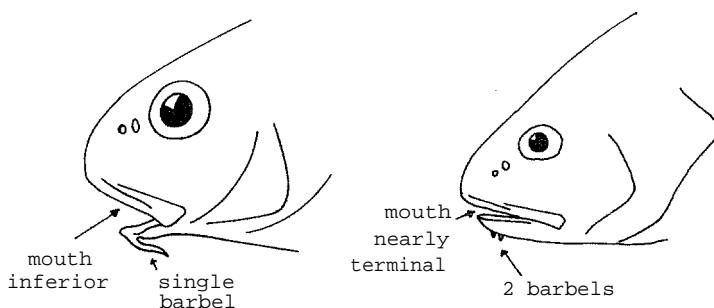
DISTINGUISHING CHARACTERS OF SIMILAR SPECIES OCCURRING IN THE AREA:

Dendrophysa russelli: mouth inferior and only a single barbel on chin.

Johnius species with barbel on chin: swimbladder hammer-shaped and 2nd anal spine shorter; only one barbel on chin (2 in *D. albida*).

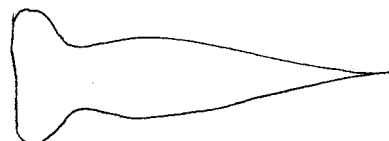
Umbrina species with barbel on chin: a pore lies at tip of barbel (not at its base); also, swimbladder has no appendages.

Nibea species: lack barbels on chin.



Dendrophysa russelli

Daysciaena albida



swimbladder, hammer-shaped (appendages omitted)
Johnius



swimbladder, carrot-shaped (appendages omitted)
Dendrophysa

SIZE:

Maximum: 36 cm; common: 20 to 25 cm.

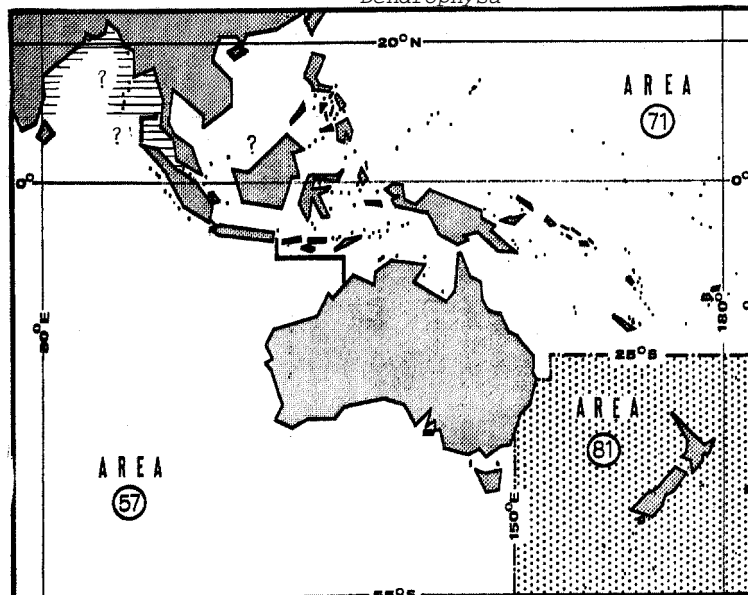
GEOGRAPHICAL DISTRIBUTION AND BEHAVIOUR:

Calcutta and eastern coast of India, possibly eastward to Borneo.

Inhabits shallow coastal waters and estuaries.

PRESENT FISHING GROUNDS:

Coastal waters, throughout its range.



CATCHES, MAIN FISHING GEAR AND PRINCIPAL FORMS OF UTILIZATION:

Separate statistics are not recorded for this species within the area. The total reported catch of unclassified croakers and drums in 1972 was:

area 57 (Eastern Indian Ocean): 41 900 tons (India only)
area 71 (Western Central Pacific): 21 400 tons (Philippines: 16 900 tons;
Malaysia: 4 500 tons)

Caught with bottom trawls, gill nets and handlines.

Marketed fresh; also dried-salted; swimbladder dried.

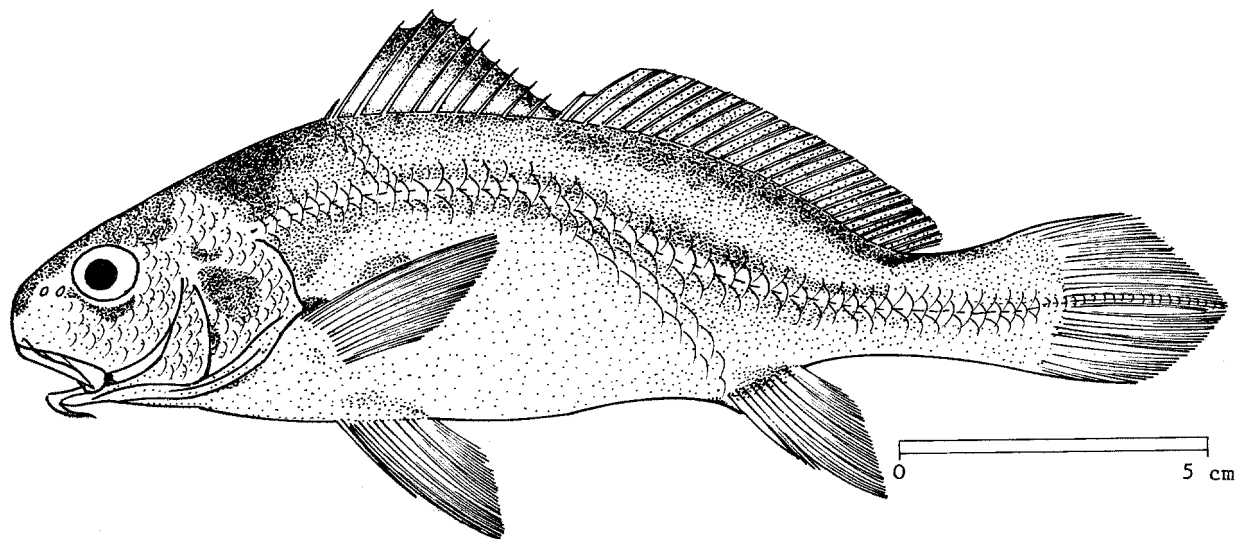
FAO SPECIES IDENTIFICATION SHEETS

FAMILY: SCIAENIDAE

FISHING AREAS 57,71
(E Ind. Ocean)
(W Cent. Pacific)

Dendrophysa russelli Cuvier, 1830

SYNONYMS STILL IN USE: *Umbrina russelli* Cuvier, 1830
Sciaena russelli: Bleeker, 1874; Weber & de Beaufort, 1936;
Lin, 1938; Chu, Lo & Wu, 1963



VERNACULAR NAMES:

FAO: En - Goatee croaker
Fr -
Sp -

NATIONAL:

DISTINCTIVE CHARACTERS:

A fairly small species with an oblong body, its depth 3 to 4 times in standard length; snout rounded and projecting slightly beyond tip of upper jaw; mouth inferior; upper jaw less than 1/2 of head length; a single barbel on chin. Teeth not well differentiated into large and small, the large ones not widely spaced and forming outer series in upper jaw; no canine teeth. Lower gill rakers 8. Swimbladder carrot-shaped, with about 15 pairs of arborescent appendages, the first entering the head, the last bifid and parallel to tubular end of bladder. Dorsal fin with 10 spines, followed by a deep notch, second part of the fin with 1 spine and 26 to 28 soft rays; pectoral fin moderate, about 3/4 of head length; anal fin with 2 spines and 7 soft rays, the 2nd spine strong and a little less than 1/2 of head length; caudal fin rhomboid. Scales cycloid (smooth) on front part of head and lower parts of dorsal and anal fins, elsewhere ctenoid (rough to touch); lateral line scales reaching to tip of caudal fin.

Colour: back grey, shading to white on belly; upper edge of spiny part of dorsal fin dark.



swimbladder
ventral view

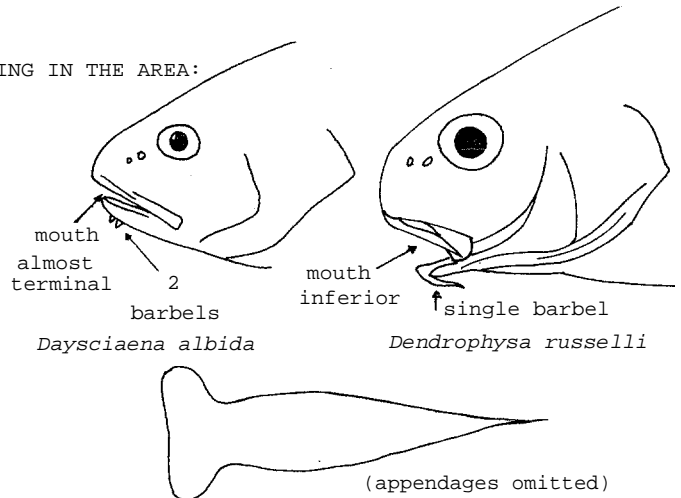
DISTINGUISHING CHARACTERS OF SIMILAR SPECIES OCCURRING IN THE AREA:

Daysciaena albida: mouth nearly terminal and a pair of barbels on chin.

Johnius species with barbel on chin: swimbladder hammer-shaped and 2nd anal spine shorter.

Umbrina species with barbel on chin: a pore lies at tip of barbel (not at its base); also, swimbladder has no appendages.

Nibea species: lack a barbel on chin.



Daysciaena albida

Dendrophysa russelli

Johnius - swimbladder hammer-shaped

SIZE:

Maximum: 25 cm; common: 15 cm.

GEOGRAPHICAL DISTRIBUTION, AND BEHAVIOUR:

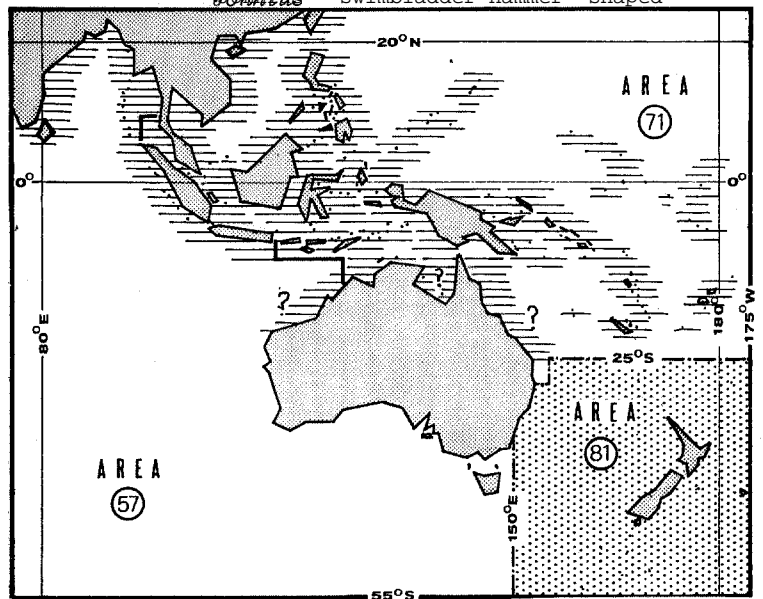
Throughout most of northern part of area, and perhaps to northern Australian coasts.

Found in-coastal waters, down to 40 m.

Feeds on small fishes and invertebrates.

PRESENT FISHING GROUNDS:

Coastal waters, throughout its range.



CATCHES, MAIN FISHING GEAR AND PRINCIPAL FORMS OF UTILIZATION:

Separate statistics are not recorded for this species within the area. The total reported catch of unclassified croakers and drums in 1972 was:

area 57 (Eastern Indian Ocean): 41 900 tons (India only)
 area 71 (Western Central Pacific): 21 400 tons (Philippines: 16 900 tons;
 Malaysia: 4 500 tons)

Caught with bottom trawls, handlines, gill nets and traps.

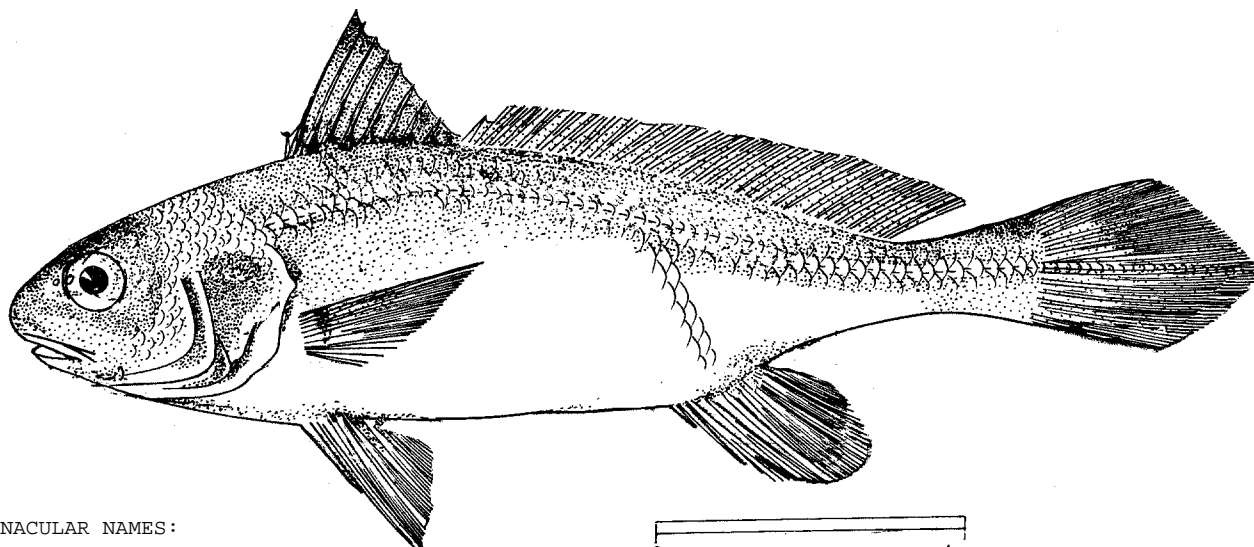
Marketed fresh; also dried-salted; swimbladder dried.

FAO SPECIES IDENTIFICATION SHEETS

FAMILY: SCIAENIDAE

FISHING AREAS 57,71
(E Ind. Ocean)
(W Cent. Pacific)*Johnius belangerii* (Cuvier, 1830)

SYNONYMS STILL IN USE: *Sciaena belengeri*: Day, 1876
Corvina lobata Cuvier, 1830
Sciaena (Corvina) nasus Steindachner, 1866
Corvina australis Günther, 1880
Johnius fasciatus Chu, Lo & Wu, 1963
Sciaena novaehollandiae: Ogilby, 1918



VERNACULAR NAMES:

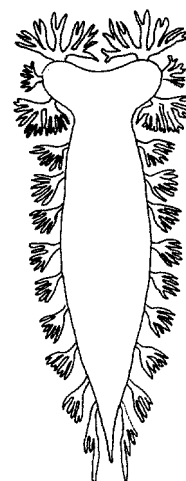
FAO: En - Belanger's croaker
 Fr -
 Sp -

NATIONAL:

DISTINCTIVE CHARACTERS:

A medium-sized species with a steeply rounded snout; mouth small, slightly inferior; upper jaw reaching to below pupil; no barbel on chin. Teeth differentiated into large and small in upper jaw only, the large forming outer series; no canine teeth. Lower gill rakers 8 to 10, short. Swimbladder hammer-shaped, with 11 to 13 pairs of arborescent appendages, the first entering the head and sending a palmate branch to the front of the pectoral arch. Dorsal fin with 9 to 10 spines, followed by a deep notch, second part of the fin with 1 spine and 27 to 31 soft rays; pectoral fin moderate, about 3/4 of head length; anal fin with 2 spines and 7 to 8 soft rays, the 2nd spine rather strong and about 1/3 of head length; caudal fin rhomboid. Scales cycloid (smooth) on snout and lower parts of head, elsewhere strongly ctenoid (very rough to touch); lateral line scales reaching to tip of caudal fin.

Colour: darkly pigmented, but pigment sometimes irregular, sometimes concentrated into short dark bars along back or on dorsal fin; spinous part of dorsal fin black, lower fins also black in many cases; a dark blotch shows through gill cover.

swimbladder
ventral view

DISTINGUISHING CHARACTERS OF SIMILAR SPECIES OCCURRING IN THE AREA:

Johnius dussumieri: barbel present on chin.

Johnius coitor: snout prominent and swollen; also, more gill rakers (10 to 13; 8 to 10 in *J. belangerii*).

Johnius carutta, *J. trachycephalus*: cycloid scales on body (or weakly ctenoid on belly and near tail in *J. carutta*); also, lower gill rakers more in *J. trachicephalus* (12 to 13).

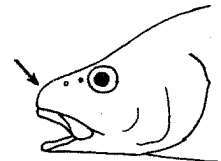
Johnius hypostomus: more soft dorsal fin rays (32 to 34; 27 to 31 in *J. belangerii*).

Johnieops species: teeth enlarged in lower as well as in upper jaw.

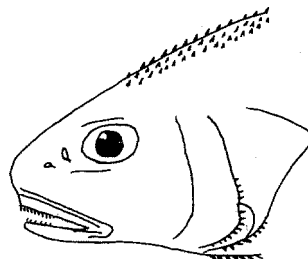
Aspericorvina jubata: scales extremely rough and denticulate on head, back and belly; also, gill cover bones with denticulations.



Johnius dussumieri



Johnius coitor



Aspericorvina



Johnius belangerii

SIZE:

Maximum: 28 cm; common: 15 to 20 cm.

GEOGRAPHICAL DISTRIBUTION AND BEHAVIOUR:

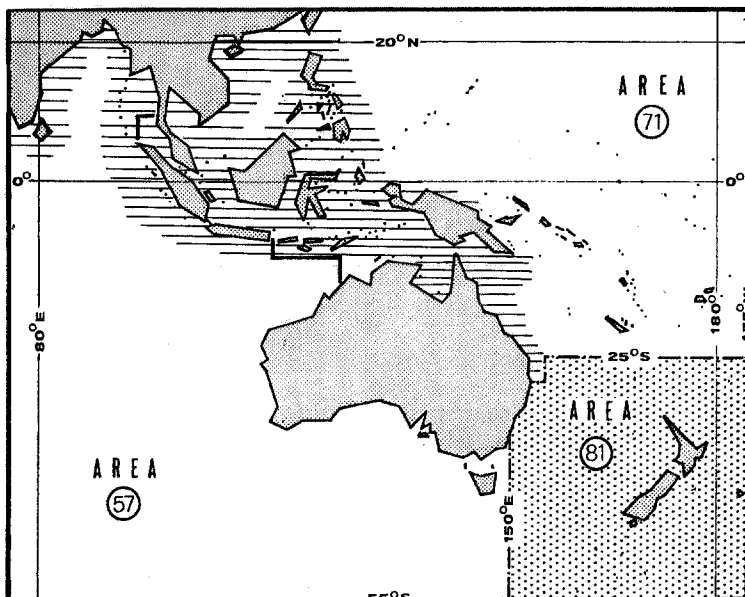
Throughout most of northern part of area and southward to New South Wales (Australia).

Inhabits coastal waters, down to 40 m.

Feeds on invertebrates.

PRESENT FISHING GROUNDS:

Coastal waters, throughout its range.



CATCHES, MAIN FISHING GEAR AND PRINCIPAL FORMS OF UTILIZATION:

Separate statistics are not recorded for this species within the area. The total reported catch of unclassified croakers and drums in 1972 was:

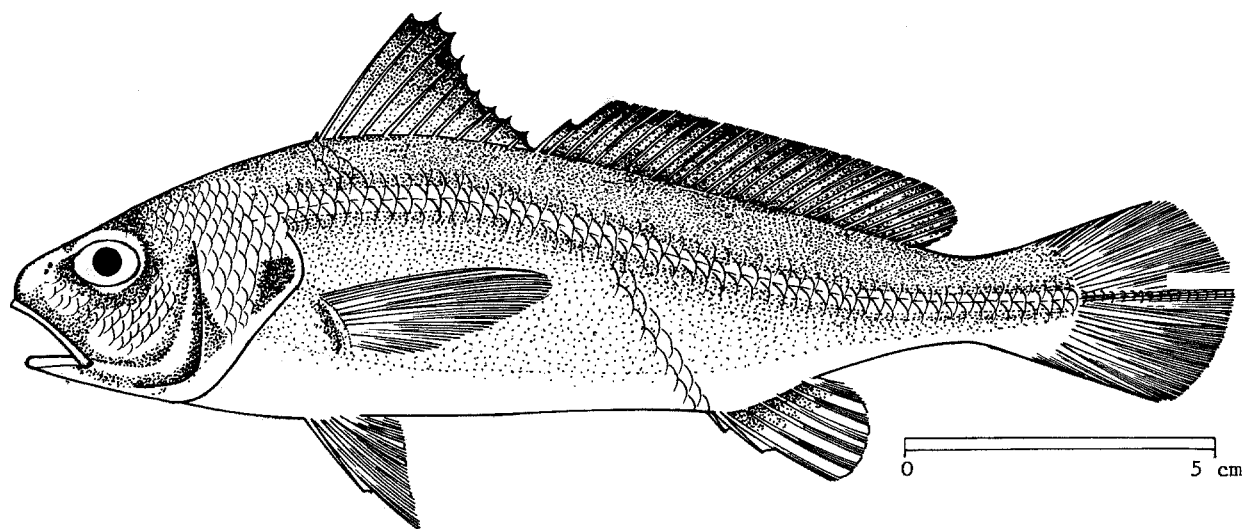
area 57 (Eastern Indian Ocean): 41 900 tons (India only)
 area 71 (Western Central Pacific): 21 400 tons (Philippines 16 900 tons;
 Malaysia: 4 500 tons)

Caught with bottom trawls, traps and handlines.

Marketed fresh; also dried-salted; swimbladder dried.

FAO SPECIES IDENTIFICATION SHEETS

FAMILY: SCIAENIDAE

FISHING AREAS 57,71
(E Ind. Ocean)
(W Cent. Pacific)*Johnius carutta* Bloch, 1793SYNONYMS STILL IN USE: *Sciaena carutta*: Day, 1876

VERNACULAR NAMES

FAO: En - Karut croaker
Fr -
Sp -

NATIONAL:

DISTINCTIVE CHARACTERS:

A small species with a rounded snout and a small, low-set, nearly horizontal and inferior mouth; lower jaw about 1/3 of head length; no barbel on chin. Teeth differentiated into large and small in upper jaw only, the large forming outer series; no canine teeth. Lower gill rakers 8 to 9. Swim-bladder hammer-shaped, with about 16 pairs of arborescent appendages, the first entering head and sending a palmate branch to the front of pectoral arch. Dorsal fin with 9 to 10 spines, followed by a deep notch, second part of the fin with 1 spine and 25 to 28 soft rays; pectoral fin moderate, about 3/4 of head length; anal fin with 2 spines and 7 soft rays, the 2nd spine weak, about 1/4 of head length; caudal fin rhomboid. Scales of head and upper part of body cycloid (smooth), elsewhere (especially lower part of body and toward tail) some scales weakly ctenoid (visible with lens); scales present also on soft parts of dorsal and anal fins; lateral line scales reaching to tip of caudal fin.

Colour: upper 2/3 of body dark grey with a yellow or white streak along lateral line.

DISTINGUISHING CHARACTERS OF SIMILAR SPECIES OCCURRING IN THE AREA:

Johnius dussumieri: barbel present on chin.

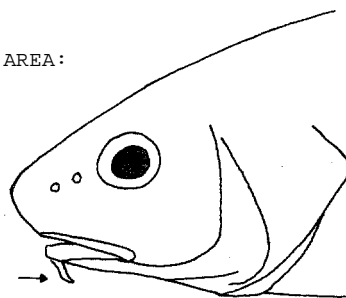
Johnius trachycephalus: snout prominent and more gill rakers (12 to 13; 8 to 9 in *J. carutta*); also, no white or yellow lateral streak on flanks.

Johnius belangerii, *J. coitor*: scales ctenoid (rough to touch) on whole of body; no white or yellow lateral streak on flanks; also, *J. coitor* has more gill rakers (10 to 13).

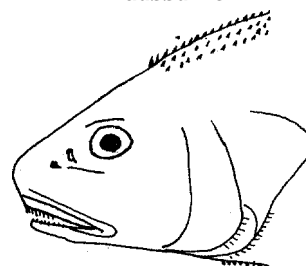
Johnius hypostomus: more soft dorsal fin rays (32 to 34); 25 to 28 in *J. carutta*).

Johnieops species: teeth enlarged in lower as well as in upper jaw.

Aspericorvina jubata: scales extremely rough and denticulate on head, back and belly; also, gill cover bones with denticulations.



Johnius dussumieri



Aspericorvina, jubata

SIZE:

Maximum: 30 cm; common: 20 cm.

GEOGRAPHICAL DISTRIBUTION AND BEHAVIOUR:

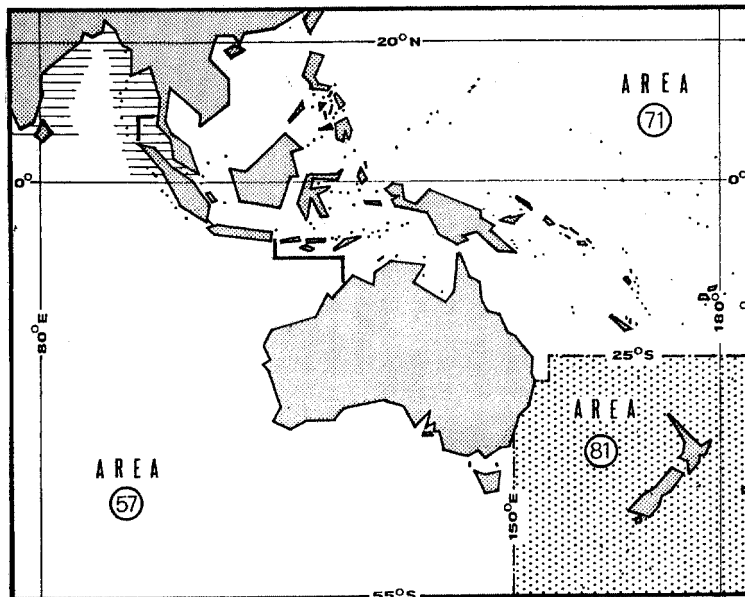
Western coast of Malay Peninsula and Bay of Bengal; also westward to western coast of India.

Inhabits inshore waters down to 40 m.

Feeds on small fishes and invertebrates.

PRESENT FISHING GROUNDS:

Coastal waters, throughout its range.



CATCHES, MAIN FISHING GEAR AND PRINCIPAL FORMS OF UTILIZATION:

Separate statistics are not recorded for this species within the area. The total reported catch of unclassified croakers and drums in 1972 was:

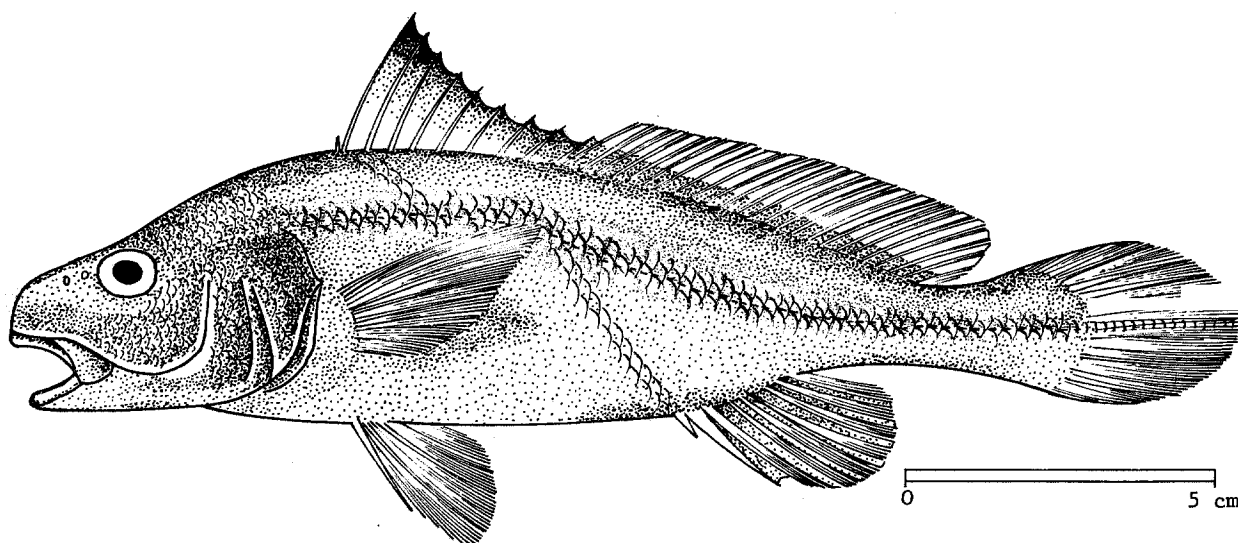
area 57 (Eastern Indian Ocean): 41 900 tons (India only)
area 71 (Western Central Pacific): 21 400 tons (Philippines: 16 900 tons;
Malaysia: 4 500 tons)

Caught with bottom trawls, traps and handlines.

Marketed fresh; also dried-salted; swimbladder dried.

FAO SPECIES IDENTIFICATION SHEETS

FAMILY: SCIAENIDAE

FISHING AREAS 57,71
(E Ind. Ocean)
(W Cent. Pacific)*Johnius coitor* (Ham. Buch., 1822)SYNONYMS STILL IN USE: *Sciaena coitor*: Day, 1876
Wak coitor: Lin, 1938; Chu, Lo & Wu, 1963

VERNACULAR NAMES:

FAO: En - Coitor croaker
Fr -
Sp -

NATIONAL:

DISTINCTIVE CHARACTERS:

A small species with a swollen snout projecting well beyond lower jaw; mouth inferior; upper jaw reaching to below middle of eye; no barbel on chin. Teeth differentiated into large and small in upper jaw, not, or but little, in lower jaw, the large forming outer series in upper jaw; no canine teeth. Lower gill rakers 10 to 13, with one or two minute stumps occasionally in front. Swimbladder hammer-shaped, with 11 to 13 pairs of arborescent appendages, the first entering head. Dorsal fin with 10 spines, followed by a low notch, second part of the fin with 1 spine and 26 to 28 soft rays; pectoral fin moderate, about 3/4 of head length; anal fin with 2 spines and 7 to 8 soft rays, the 2nd spine strong and up to 1/2 of head length; caudal fin rhomboid or rounded at tip. Scales cycloid (smooth) on operculum and lower parts of head, elsewhere ctenoid (rough to touch); Lateral line scales reaching to tip of caudal fin.

Colour: light golden yellow with a light purple/blue sheen; spinous part of dorsal fin with dusky to black border; soft part of dorsal, anal and caudal fins with a dull green/grey border.

DISTINGUISHING CHARACTERS OF SIMILAR SPECIES OCCURRING IN THE AREA:

J. dussumieri: barbel present on chin.

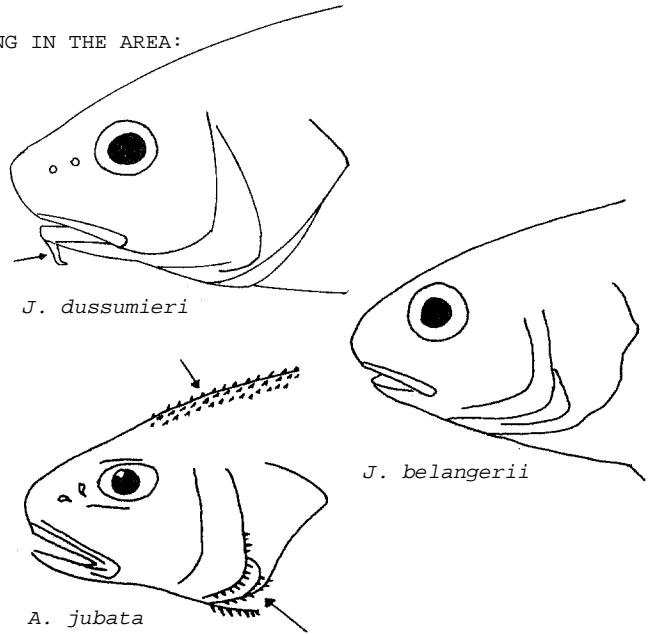
Johnius belangerii: snout steep and rounded, not swollen; also, fewer lower gill rakers (8 to 10; 10 to 13 in *J. coitor*).

Johnius carutta, *J. trachycephalus*: cycloid (smooth) scales on body (weakly ctenoid (rough) on belly and near tail in *J. carutta*); lower gill rakers only 8 to 9.

Johnius hypostomus: more soft dorsal fin rays (32 to 34; 26 to 28 in *J. coitor*).

Johnieops species: teeth enlarged in lower as well as in upper jaw.

Aspericorvina jubata: scales extremely rough and denticulate on head, back and belly; also, gill cover bones with denticulations.



SIZE:

Maximum: 16 cm; common: 13 cm.

GEOGRAPHICAL DISTRIBUTION AND BEHAVIOUR:

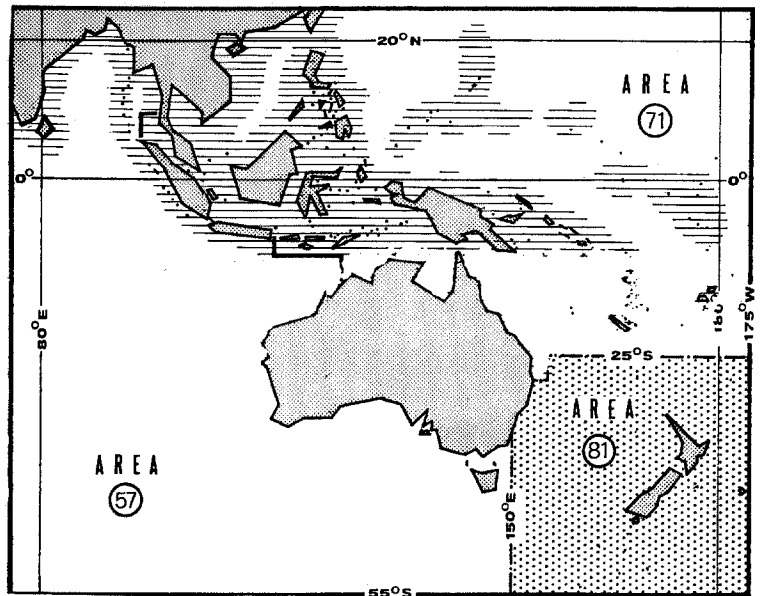
Throughout northern part of area.

Inhabits inshore and coastal waters, down to 40 m; also estuaries.

Feeds on small fishes and invertebrates.

PRESENT FISHING GROUNDS:

Coastal waters, throughout its range.



CATCHES, MAIN FISHING GEAR AND PRINCIPAL FORMS OF UTILIZATION:

Separate statistics are not recorded for this species within the area. The total reported catch of unclassified croakers and drums in 1972 was:

area 57 (Eastern Indian Ocean): 41 900 tons (India only)
 area 71 (Western Central Pacific): 21 400 tons (Philippines: 16 900 tons;
 Malaysia: 4 500 tons)

Caught with bottom trawls, traps and handlines.

Marketed fresh; also dried-salted; swimbladder dried.

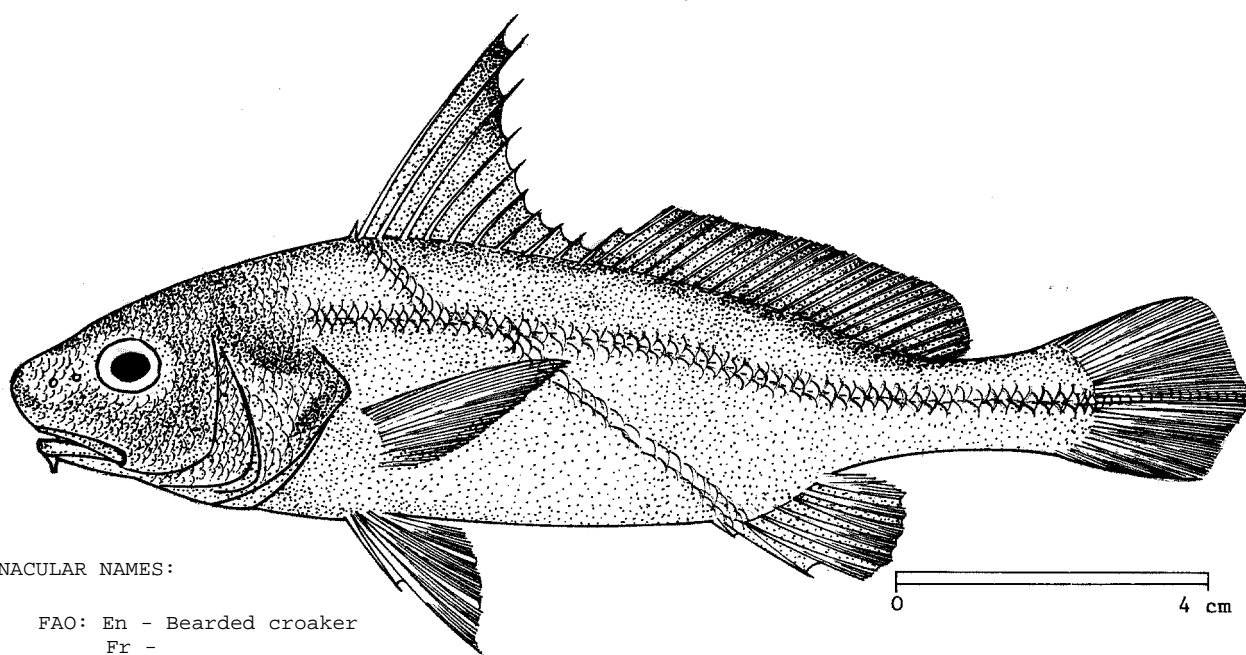
FAO SPECIES IDENTIFICATION SHEETS

FAMILY: SCIAENIDAE

FISHING AREAS 57,71
(E Ind. Ocean)
(W Cent. Pacific)

Johnius dussumieri (Valenciennes, 1833)

SYNONYMS STILL IN USE: *Umbrina dussumieri* Valenciennes, 1833
Sciaena dussumieri: Bleeker, 1874; Fowler, 1933;
Weber & de Beaufort, 1936; Lin, 1938
Dendrophysa dussumieri: Trewavas, 1964
Johnius amblycephalus: Chu, Lo & Wu, 1963
Umbrina fuscolineata: von Bonde, 1923



VERNACULAR NAMES:

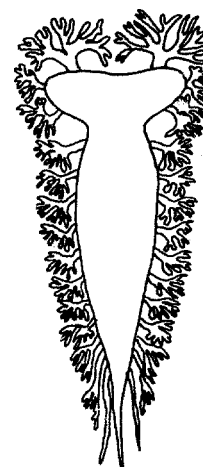
FAO: En - Bearded croaker
Fr -
Sp -

NATIONAL:

DISTINCTIVE CHARACTERS:

A medium-sized species with a rounded, projecting snout and an inferior mouth; upper jaw reaching to below hind part of pupil, lower jaw less than 1/2 of head length; a blunt barbel on chin. Teeth differentiated into large and small in upper jaw only, the large forming outer series; no canine teeth. Lower gill rakers 6 to 9, the anterior minute. Swimbladder hammer-shaped, with 14 to 15 pairs of appendages, all except one or two posterior arborescent, the first branching in the head. Dorsal fin with 10 spines, followed by a deep notch, second part of the fin with 1 spine and 24 to 26 soft rays; pectoral fin moderate, about 3/4 of head length; anal fin with 2 spines and 7 soft rays, the 2nd spine weak; caudal fin rhomboid. Scales on body cycloid (smooth); lateral line scales reaching to tip of caudal fin.

Colour: upper part of the rather high spinous dorsal fin black; no other distinctive markings.



swimbladder
ventral view

DISTINGUISHING CHARACTERS OF SIMILAR SPECIES OCCURRING IN THE AREA:

Johnius macropterus, *J. mannarensis*: ctenoid (rough to touch) scales present on body, more lower gill rakers in *J. macropterus* (10 to 12; 6 to 9 in *J. dussumieri*) and more soft dorsal fin rays (30 to 32 or 27; 24 to 26 in *J. dussumieri*).

Other *Johnius* species: lack a barbel on chin.

Johnieops species: teeth enlarged in lower as well as in upper jaw.

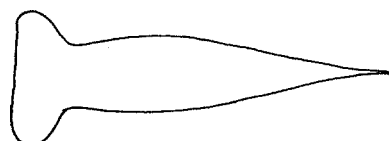
Dendrophysa russelli, *D. albida*: also has a barbel on chin, but the swimbladder is carrot-shaped (hammer-shaped in *J. dussumieri*); also, more soft dorsal fin rays in *D. russelli* (27 to 28).

Daysciaena albida: two barbels on chin; also, swimbladder carrot-shaped.

Umbrina sinuata: a pore lies at tip of barbel; also, no appendages on swimbladder.



swimbladder (appendages omitted)
Dendrophysa



swimbladder (appendages omitted)
Johnius

SIZE:

Maximum: 18 cm; common: 15 cm.

GEOGRAPHICAL DISTRIBUTION AND BEHAVIOUR:

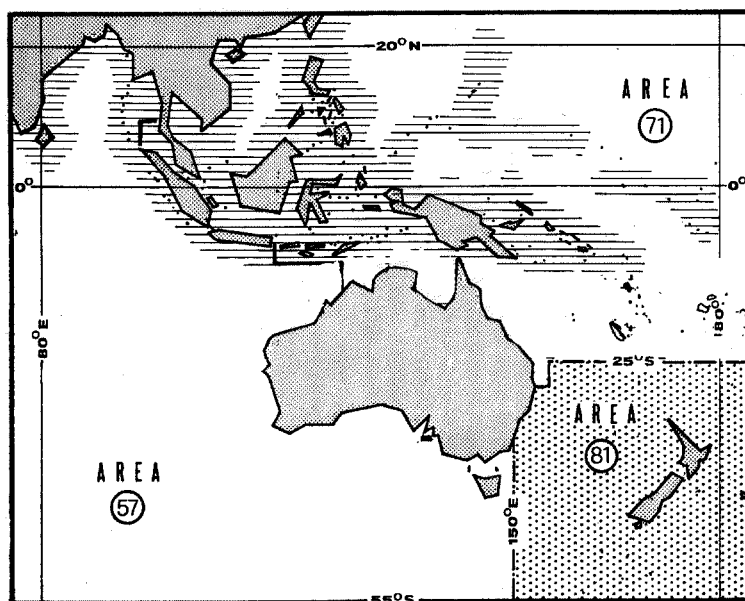
Abundant throughout northern part of area; also, westward to East Africa.

Inhabits coastal waters, down to 40 m.

Feeds on small fishes and invertebrates.

PRESENT FISHING GROUNDS:

Coastal waters, throughout its range.



CATCHES, MAIN FISHING GEAR AND PRINCIPAL FORMS OF UTILIZATION:

Separate statistics are not recorded for this species within the area. The total reported catch for unclassified croakers and drums in 1972 was:

area 57 (Eastern Indian Ocean): 41 900 tons (India only)
area 71 (Western Central Pacific): 21 400 tons (Philippines: 16 900 tons;
Malaysia: 4 500 tons)

Caught with bottom trawls, traps and handlines.

Marketed fresh; also dried-salted; swimbladder dried.