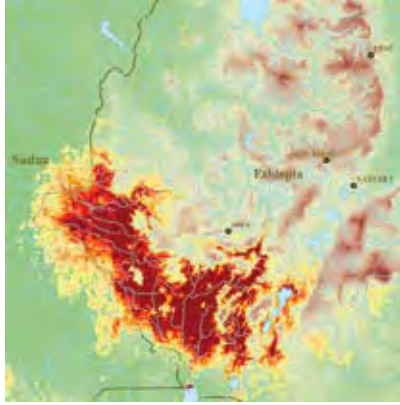


FAO ANIMAL PRODUCTION AND HEALTH



# guidelines

COLLECTION OF  
ENTOMOLOGICAL BASELINE  
DATA FOR TSETSE  
AREA-WIDE INTEGRATED PEST  
MANAGEMENT PROGRAMMES



COLLECTION OF  
ENTOMOLOGICAL BASELINE  
DATA FOR TSETSE  
AREA-WIDE INTEGRATED PEST  
MANAGEMENT PROGRAMMES

---

**Stephen G. A. Leak**

**Dejene Ejigu**

**Marc J. B. Vreysen**

Joint FAO/IAEA Programme of Nuclear  
Techniques in Food and Agriculture  
Vienna, Austria

The designations employed and the presentation of material in this information product do not imply the expression of any opinion whatsoever on the part of the Food and Agriculture Organization of the United Nations (FAO) concerning the legal or development status of any country, territory, city or area or of its authorities, or concerning the delimitation of its frontiers or boundaries. The mention of specific companies or products of manufacturers, whether or not these have been patented, does not imply that these have been endorsed or recommended by FAO in preference to others of a similar nature that are not mentioned.

ISBN 978-92-5-106158-9

All rights reserved. Reproduction and dissemination of material in this information product for educational or other non-commercial purposes are authorized without any prior written permission from the copyright holders provided the source is fully acknowledged. Reproduction of material in this information product for resale or other commercial purposes is prohibited without written permission of the copyright holders.

Applications for such permission should be addressed to:

Chief

Electronic Publishing Policy and Support Branch

Communication Division

FAO

Viale delle Terme di Caracalla, 00153 Rome, Italy

or by e-mail to:

[copyright@fao.org](mailto:copyright@fao.org)

---

# Contents

<b>Foreword</b>	vii
<b>SECTION 1</b>	
<b>Basic Biology and Anatomy of the Tsetse Fly</b>	<b>1</b>
<b>1.1. Introduction</b>	<b>1</b>
<b>1.2. External Anatomy</b>	<b>1</b>
1.2.1. Cuticle	1
1.2.2. Mouthparts	4
1.2.3. Thorax	6
1.2.4. Legs	6
1.2.5. Wings	6
1.2.6. Abdomen	8
1.2.7. Genitalia	8
<b>1.3. Internal Anatomy</b>	<b>9</b>
1.3.1. Organs Associated with Feeding and Digestion	9
1.3.2. Reproductive System	10
<b>1.4. Life Cycle</b>	<b>12</b>
<b>1.5. Identification of Tsetse Flies</b>	<b>14</b>
1.5.1. Key for the Identification of Adults of the Species of <i>Glossina</i>	15
<b>1.6. Glossary of Terms</b>	<b>39</b>
<b>1.7. Tsetse Distribution</b>	<b>40</b>
<b>SECTION 2</b>	
<b>Planning and Preparation of a Baseline Data Survey</b>	<b>47</b>
<b>2.1. Identification of a Potential Project Area</b>	<b>47</b>
2.1.1. Selecting an Area	47
<b>2.2. Objectives of the Survey</b>	<b>52</b>
2.2.1. Subsequent Phases	53
2.2.2. Types of Survey	53
2.2.3. Population Dynamics and Behavioural Studies	54

---

<b>2.3. Designing a Sampling Strategy</b>	<b>54</b>
2.3.1. Design of a Survey Programme	54
2.3.2. General Principles	54
2.3.3. Pattern of Spatial Sampling	55
2.3.4. Pattern of Sampling in Time	55
2.3.5. Stratification and Stratified Sampling	56
2.3.6. Meteorological Data: What Climatic Data Should Be Recorded?	62
<b>2.4. Preparatory Phase</b>	<b>63</b>
2.4.1. Area Identification	63
2.4.2. Georeferencing	72
2.4.3. Defining the Limits of the Survey Area	80
2.4.4. Setting Up a Database	96
2.4.5. Sensitizing the Local Population	116
2.4.6. Management of Resources	117
<b>SECTION 3</b>	
<b>Implementation of a Baseline Data Survey</b>	<b>123</b>
<b>3.1. Sampling Devices</b>	<b>123</b>
3.1.1. Traps	123
3.1.2. Trap Manufacture: Materials and Construction	129
3.1.3. Interpretation of Trap Catches	138
3.1.4. Odour Attractants	140
3.1.5. Deployment of Traps	145
3.1.6. Maintaining the Survey Equipment	156
<b>3.2. Entomological Procedures</b>	<b>158</b>
3.2.1. Identification of Tsetse Species and Sex	159
3.2.2. Trap and Tsetse Distribution Maps	159
3.2.3. Estimation of Apparent Density	159
3.2.4. Blood Meal Analysis	162
3.2.5. Dissection	163
3.2.6. Population Dynamics and other Entomological Assessment	174
<b>3.3. Genetic Analysis</b>	<b>175</b>
3.3.1. Objectives of Genetic Analysis in the Context of AW-IPM Programmes	175
3.3.2. Principles of Genetic Analysis	176
3.3.3. New Possibilities: Geometric Morphometrics of Tsetse	176
3.3.4. Collection of Samples for Genetic Analysis	178

---

<b>3.4. Reporting</b>	<b>178</b>
<b>3.5. Examples of Grid Based Tsetse Surveys</b>	<b>180</b>
3.5.1. Togo	180
3.5.2. The Southern Rift Valley, Ethiopia	182
3.5.3. The Gambia	185
3.5.4. The Ghibe Valley, Ethiopia	187
<b>3.6. Equipment and Materials Required</b>	<b>187</b>
3.6.1. Materials/equipment	187
<b>References</b>	<b>191</b>
ANNEX 1 <b>Links to web pages</b>	199
ANNEX 2 <b>Glossary</b>	201
ANNEX 3 <b>Acronyms</b>	203
ANNEX 4 <b>Suppliers</b>	205

---

# Foreword

The creation of tsetse-free zones using an area-wide integrated pest management (AW-IPM) approach, as outlined in the Pan African Tsetse and Trypanosomiasis Eradication Campaign (PATTEC) Plan of Action is a noble undertaking but also a very challenging one in view of the transboundary nature of the tsetse and trypanosomiasis problem. AW-IPM programmes, especially those that include a sterile insect technique (SIT) component are complex and management intensive (Vreysen et al. 2007) and are usually implemented in different phases. Before any operational suppression or eradication can be attempted in the target area, it is essential that accurate baseline data be collected in order to develop an appropriate intervention strategy. This document attempts to provide detailed guidelines for both senior technical staff involved in the planning of entomological surveys for AW-IPM programmes (section 2) and field workers who will be involved in the implementation of these surveys (section 1 and 3).

The term area-wide in AW-IPM refers to the target population (not the target area) and is defined as the integrated use of control tactics against an entire tsetse population within a delimited geographical area (Klassen 2005), i.e. total population management (Hendrichs et al. 2007). The target area could be quite large, as for example the area of the Southern Rift Valley of Ethiopia infested by *Glossina pallidipes* (25 000 km<sup>2</sup>) or quite small, such as the *Glossina palpalis gambiensis* infestation in the Niayes area, close to Dakar, Senegal (~ 1000 km<sup>2</sup>). The concept of AW-IPM differs from localized control or field-by-field management that has in the last decades been the more traditional way of dealing with the tsetse problem. Field-by-field management addresses only small fractions of a pest population at any given time, usually those that cause a current problem (e.g. an outbreak of disease). The goal of these two approaches is completely different and although both have merit, the choice as to which to use has many financial, managerial, and technical implications that have to be taken into consideration (Hendrichs et al. 2007).

Although comprehensive, the subject matter is not necessarily exhaustive in the level of detail given as there are already good sources of information on many topics, and appropriate references and links are given. In particular, the FAO training manuals for tsetse personnel (volume 1–5) are referred to as valuable sources of information. These guidelines will update some of the information found elsewhere (e.g. Cuisance 2000), as new research is constantly contributing to the improvement of survey methods (especially in the fields of odour attractants and development of new traps).

Whilst someone wishing to understand all aspects of tsetse survey work could read the manual from cover to cover, it is more likely that they will use it for reference, or for finding information on a particular activity as it arises. These guidelines therefore provide some background information for increased understanding as well as a more practical level of how to carry out a specific activity.

There are differences between theory and practice when considering how to plan a tsetse survey necessitated by the need to compromise between what is theoretically possible and what is practical within the financial and human resource constraints. For example, we know

that tsetse presence and absence can change over very small distances and they might be found in one place with suitable habitat but not in another, with apparently similar habitat. We also know that at very low densities, with traps of limited efficiency, trapping over a period of three days with a small number of traps may not detect those flies and a zero catch does not mean tsetse are absent. Theoretically we should trap in those situations with a higher number of traps for a longer period of time. Models have now been developed that make it possible to calculate the number of traps and the duration of trapping necessary to be able to determine presence within a given degree of probability, based upon the efficiency of the trapping device used, the particular species of tsetse in question, the season and the expected density of the flies. However, unless dealing with a relatively small area, it is unlikely that the required intensity of trapping would be possible.

The authors would like to thank the comments and contributions made by Dr. Robert Mangan, Dr. Philippe Solano (on genetics), and Mr. Micha Silver (on GIS). They also would like to thank the numerous field workers and colleagues who have provided feedback and useful comments on an earlier version of this manual.