

June 2005



منظمة الأغذية
والزراعة
للأمم المتحدة

联合国
粮食及
农业组织

Food
and
Agriculture
Organization
of
the
United
Nations

Organisation
des
Nations
Unies
pour
l'alimentation
et
l'agriculture

Organización
de las
Naciones
Unidas
para la
Agricultura
y la
Alimentación

E

COMMITTEE ON COMMODITY PROBLEMS

INTERGOVERNMENTAL GROUP ON TEA

Sixteenth Session

Bali, Indonesia, 20 – 22 July 2005

TEA COMPENDIUM

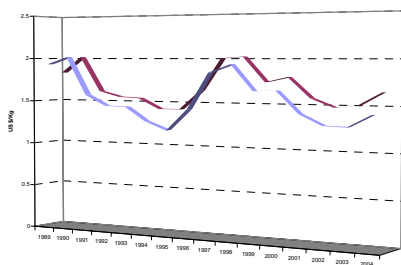
For reasons of economy, this document is produced in a limited number of copies. Delegates and observers are kindly requested to bring it to the meetings and to refrain from asking for additional copies, unless strictly indispensable.
Most FAO meeting documents are available on Internet at www.fao.org

W0000

Tea Commodity Note

Examen du Marché du Thé

Notas Sobre el Té



To: Members and Observers of the Intergovernmental Group on Tea
Destinataires: Membres et Observateurs du Groupe Intergouvernemental sur le thé
A: Miembros y observadores del Grupo Intergubernamental sobre el Té

From: The Secretary Intergovernmental Group on Tea, FAO, Rome
Origine: Le Secrétaire du Groupe intergouvernemental sur le thé, FAO, Rome
De: Secretario del Grupo Intergubernamental sobre el Té, FAO, Roma

Table 1: World Production of Tea
Tableau 1: Production Mondiale de Thé
Cuadro 1: Producción mundial de Té

	1998-00	1999-01	1996	1997	1998	1999	2000	2001	2002	2003	2004
	Thousand Tonnes										
	Average	Average									
WORLD	2965	2980	2669	2755	3002	2965	2928	3046	3075	3150	3218
Developin	2850	2863	2557	2643	2890	2848	2812	2929	2963	3035	3099
Africa	407	412	375	358	433	396	391	450	448	463	508
Kenya	260	260	257	221	294	249	236	295	287	294	328
Malawi	44	43	37	44	40	48	45	37	39	42	50
Uganda	24	27	17	21	23	23	26	33	34	36	37
Tanzania	24	24	20	22	24	23	24	25	28	29	31
Others	55	58	44	50	52	53	60	60	60	62	62
Latin Am	68	67	65	68	70	70	65	65	76	75	73
Argentina	55	54	47	54	57	56	52	52	62	62	62
Others	13	13	18	14	13	14	13	13	14	13	11
Near East	233	219	177	209	243	267	189	202	203	209	255
Iran	58	54	62	69	61	62	50	51	51	50	50
Turkey	172	160	115	140	178	199	139	143	142	155	205
Others	3	5	0	0	4	6	0	8	10	4	0
Far East	2134	2155	1934	2002	2138	2106	2157	2202	2227	2279	2255
Bangladesh	53	55	48	53	51	56	53	57	53	57	56
China ¹	696	708	617	637	688	697	704	722	766	791	797
India	851	844	782	812	877	828	849	856	829	857	820
Indonesia	162	164	166	154	167	161	157	173	173	168	170
Sri Lanka	290	296	259	277	280	284	307	296	310	305	309
Others	81	88	62	69	75	80	87	98	96	101	103
Other Dev	8	10	6	6	6	9	10	10	9	9	8
Developed	115	117	112	112	112	117	116	117	112	115	119
Cis	15	15	14	11	15	16	15	15	14	14	18
Georgia	11	11	8	8	11	11	11	11	10	10	14
Other de	100	102	98	101	97	101	101	102	98	101	101

^{1/} Includes Tea produced in China, Province of Taiwan

^{2/} Revised since the last issue of the Tea Commodity Note in November 2004

Source: Sugar and Beverages Group, FAO

Table 2: World Exports of Tea^{1/}
 Tableau 2: Exportations Mondiales de Thé
 Cuadro 2: Exportaciones mundiales de té

	1998-00	1999-01	1996	1997	1998	1999	2000	2001	2002	2003	2004
	Thousand Tonnes										
	Average	Average									
WORLD	1307	1337	1113	1208	1308	1275	1338^{2/}	1398	1444	1406	1467
Developing	1290	1319	1106	1198	1294	1257	1320	1380	1422	1384	1445
Africa	367	370	338	320	384	364	340	388	407	412	442
Kenya	241	239	244	199	263	242	217	258	266	269	293
Malawi	41	40	32	49	41	43	38	38	39	42	47
Tanzania	22	22	18	19	22	21	22	22	23	20	24
Uganda	24	26	15	18	23	22	26	30	31	34	35
Others	40	43	28	35	34	36	36	39	48	46	44
Asia	856	882	718	809	837	823	908	914	941	901	929
Bangladesh	22	17	21	22	25	21	18	13	14	12	12
China ^{2/}	218	228	173	205	220	203	231	252	255	263	282
India	201	194	162	203	205	192	207	183	199	173	179
Indonesia	90	101	102	67	67	98	106	100	100	90	98
Sri Lanka	269	277	234	257	265	263	280	288	286	291	291
Others	56	65	27	55	54	46	67	80	87	72	67
Latin America and other developing	59	59	40	62	64	57	57	62	64	64	68
Developed	17	18	7	10	15	18	18	18	22	22	22
CIS	10	10	6	9	9	10	9	10	14	14	14
Japan	1	1	0	1	1	1	1	1	1	1	1
South Africa	5	6	1	1	3	5	6	7	7	7	6
Others	2	1	0	0	2	2	2	1	0	0	1

^{1/} The table includes re-exports

^{2/} Includes China, Province of Taiwan

Source: Sugar and Beverages Group, FAO

Table 3: World Net- Imports of Tea

Tableau 3: Importations Nettes Mondiales de Thé¹Cuadro 3: Importaciones Netas Mundiales de Té¹

	1998-00	1999-01	1996	1997	1998	1999	2000	2001	2002	2003	2004
	Average		Thousand Tonnes								
World	1258	1293	1148	1192	1232	1254	1287	1337	1382	1395	1416
Developed	671	685	618	661	666	678	671	697	709	707	719
Europe	472	481	429	475	473	476	471	485	509	504	506
EU (15)	213	211	227	228	223	212	206	213	216	210	215
Austria	2	2	1	1	2	2	2	2	2	2	3
Denmark	1	1	2	2	1	1	1	1	2	2	3
Finland	1	1	1	1	1	1	1	1	1	1	2
France	13	13	15	16	13	12	13	14	13	13	14
Germany	22	21	25	18	23	24	18	20	22	27	16
Ireland	10	10	12	11	9	10	11	10	11	10	13
Italy	5	4	4	5	5	5	4	5	6	7	8
Netherlands	14	15	12	17	16	13	15	17	16	15	17
Spain	1	2	1	1	1	1	1	1	2	2	2
Sweden	3	3	3	3	3	3	3	2	3	3	3
UK	139	136	148	150	146	137	134	137	135	125	130
Others	2	3	3	3	3	3	3	3	3	3	4
Other EU	43	42	42	43	48	42	39	43	52	55	65
Poland	30	29	31	32	33	29	27	30	27	27	32
Others	13	13	11	11	15	13	12	13	25	28	33
CIS	215	228	160	204	202	222	226	229	238	239	226
Russia	153	156	111	148	143	159	156	153	164	169	169
Others	32	72	49	56	59	63	70	76	74	70	57
North America	113	113	103	98	114	118	106	115	112	113	119
USA	95	95	89	81	97	99	88	97	93	94	99
Canada	18	18	14	17	17	19	18	18	19	19	20
Oceania	19	18	22	20	19	19	19	17	17	18	19
Australia	15	14	18	16	15	15	15	13	14	15	16
New Zealand	4	4	4	4	4	4	4	4	3	3	3
Other Developing	67	73	64	68	60	65	75	80	71	72	75
Japan	51	56	49	51	45	49	58	60	51	51	56
Israel	2	2	2	2	2	2	2	4	4	4	2
South Africa	14	15	13	15	13	14	15	16	16	17	17
Developing	587	607	530	531	566	576	616	640	676	688	697
Latin America	17	17	17	17	18	18	15	18	21	22	22
Chile	13	13	13	12	14	13	11	14	14	16	16
Others	4	4	4	5	4	5	4	4	7	6	6
Near East	309	323	280	308	295	301	331	348	375	418	412
In Asia	214	230	183	191	191	211	241	251	255	293	291
Afghanistan	23	24	48	35	26	17	25	30	34	71	72
Iran, Islamic Rep.	40	42	27	36	33	38	47	40	41	41	41
Iraq	48	50	10	23	50	43	52	57	75	75	75
Saudi Arabia	14	18	11	9	9	11	23	20	20	21	24
Syria	20	22	21	18	19	20	20	26	26	26	29
Others	69	74	66	70	54	82	74	78	59	59	50
In Africa	95	92	97	117	104	90	90	97	120	125	121
Egypt	70	67	65	78	65	73	71	56	79	79	70
Libya	12	12	7	15	18	7	10	21	21	20	21
Sudan	13	13	25	24	21	10	9	20	20	26	30
Other Africa	97	101	82	83	94	92	105	106	108	67	71
Morocco	39	38	28	35	40	35	42	38	44	44	45
Others	58	63	54	48	54	57	63	68	64	23	26
Far East and Oceania	163	166	151	123	159	165	165	168	172	181	192
Pakistan	114	112	115	85	111	120	111	107	98	109	120
Others	49	54	36	38	48	45	54	61	74	72	72

Source: Sugar and Beverages Group, FAO

Table 4: FAO Tea Composite Price
Tableau 4: Prix Composite FAO
Cuadro 4: Precio compuesto FAO

Year	Annual	January	February	March	April	May	June	July	August	September	October	November	December
	US\$/KG												
	<i>Average</i>												
1989	1.8	1.5	1.5	1.6	1.5	1.7	1.6	1.8	1.9	2.2	2.2	2.1	2.0
1990	2.0	2.1	2.1	2.0	2.0	1.9	1.8	2.0	2.1	2.1	2.2	2.0	2.0
1991	1.6	1.9	1.8	1.7	1.7	1.8	1.6	1.5	1.5	1.5	1.5	1.5	1.4
1992	1.6	1.4	1.3	1.4	1.5	1.7	1.6	1.6	1.7	1.6	1.7	1.6	1.6
1993	1.5	1.7	1.8	1.6	1.5	1.4	1.5	1.5	1.5	1.5	1.5	1.5	1.5
1994	1.4	1.5	1.5	1.4	1.3	1.4	1.3	1.4	1.4	1.5	1.5	1.4	1.4
1995	1.4	1.4	1.4	1.3	1.4	1.4	1.3	1.4	1.4	1.5	1.5	1.6	1.5
1996	1.6	1.5	1.5	1.6	1.7	1.6	1.6	1.7	1.7	1.7	1.8	1.6	1.6
1997	2.0	1.6	1.7	1.7	1.9	1.9	2.0	2.0	2.2	2.2	2.2	2.3	2.3
1998	2.0	2.5	2.6	2.3	2.2	1.9	1.9	1.9	1.9	1.9	1.8	1.8	1.7
1999	1.7	1.8	1.7	1.6	1.6	1.6	1.6	1.8	1.8	1.9	1.9	1.9	1.8
2000	1.8	1.8	1.9	1.8	1.8	1.8	1.7	1.9	1.8	1.9	1.8	1.8	1.7
2001	1.6	1.8	1.7	1.6	1.5	1.5	1.5	1.5	1.5	1.5	1.5	1.5	1.5
2002	1.5	1.5	1.5	1.5	1.5	1.4	1.4	1.4	1.5	1.5	1.5	1.5	1.5
2003	1.5	1.6	1.5	1.5	1.4	1.4	1.5	1.6	1.5	1.5	1.6	1.5	1.6
2004	1.7	1.6	1.6	1.6	1.6	1.6	1.6	1.6	1.6	1.8	1.8	1.7	1.7

Source: Sugar and Beverages Group, FAO

Table 5: Annual Quantities of Tea sold at Auctions

Tableau 5: Quantités Annuelles de té vendues aux Enchères

Cuadro 5: Cantidades Anuales vendidas en las principales subastas de té

Year											All Auctions		All Auctions	World Export		
	London	Calcutta	Guwahati	Siliguri	Cochin	Coimbatore	Coonoor	Chittagong	Colombo	Jakarta	Mombasa	Limbe			Total India (Excluding Ind. Auct.)	
	<i>Thousand tonnes</i>															
1982	59	120	75	80	50	14	14	36	181	29	37	11	353	352	705	927
1983	54	112	75	64	47	16	18	38	167	35	49	10	332	351	683	975
1984	50	145	89	72	57	28	23	34	203	34	55	10	414	385	799	1,080
1985	55	179	120	87	65	29	24	38	197	39	72	11	504	413	917	1,083
1986	57	142	136	72	60	27	28	31	203	30	68	12	465	401	867	1,095
1987	53	133	148	81	50	32	27	35	208	33	81	9	470	419	889	1,102
1988	42	140	138	99	51	40	34	40	209	34	77	15	501	417	919	1,142
1989	34	135	152	78	48	26	35	36	194	41	99	17	475	421	895	1,206
1990	44	129	141	90	50	32	37	43	217	33	124	21	480	482	962	1,228
1991	37	139	139	92	57	31	41	42	226	24	126	19	498	475	973	1,196
1992	31	113	150	82	51	17	34	42	173	27	119	17	448	408	855	1,126
1993	29	102	151	76	52	18	41	44	215	28	128	17	441	461	902	1,223
1994	28	95	138	84	51	20	41	47	224	15	148	17	428	479	907	1,061
1995	24	93	130	76	54	18	54	43	229	13	174	11	424	495	919	1,168
1996	16	85	147	80	53	15	57	46	230	22	190	14	438	519	957	1,213
1997	11	89	149	67	61	16	73	44	255	30	167	17	456	523	979	1,313
1998	3	82	140	72	54	17	69	49	256	35	244	18	435	605	1,041	1,308
1999		89	145	87	52	20	71	39	260	24	211	13	465	547	1,012	1,275
2000		98	159	76	62	33	71	46	277	33	222	15	500	592	1,092	1,338
2001		95	138	72	57	25	71	47	279	42	276	15	457	659	1,117	1,398
2002		106	128	73	54	27	61	50	280	27	263	10	449	630	1,079	1,434
2003		124	136	87	45	22	41	47	269	33	269	15	455	632	1,087	1,398
2004		118			50	-	-	-	270	-	301	-	-	-	-	1,457

Source: Sugar and Beverages Group, FAO

Table 6: Destination of exports by country of origin
 Table 6: Destination et origine des exportations
 Cuadro 6: Destino y origen de las exportaciones

TO	From MALAWI		CHINA /Green Tea		CHINA /Black tea		INDIA		SRI LANKA		KENYA	
	2003	2004	2003	2004	2003	2004	2003	2004	2003	2004	2003	2004
<i>Thousand Tonnes</i>												
Total Export	42.00		201.10		61.90		173.00		291.40	290.61	269.20	292.70
Developed	33.41		52.00		40.90		133.90		107.40	100.13	73.56	79.04
Canada	0.47						1.70		1.40		1.10	1.18
United States	1.70		8.10		8.50		8.50		3.40	3.48	2.60	2.58
United Kingdom	20.00				3.90		19.90		7.00	5.34	52.00	50.46
France			2.20				1.10		0.00			
Germany	0.12		3.10		1.30		4.60		5.80	5.89	0.60	0.59
Ireland							2.30				4.90	4.91
Finland									6.00	6.04	0.06	0.00
Italy									2.00	0.00	0.14	0.06
Netherlands	0.41						2.90		4.00	3.61	1.40	1.31
Poland	0.60		2.10		4.90		5.70		2.20	0.00	3.60	3.98
Russia Federation	0.75		5.90		9.00		42.70		54.90	55.69	5.80	7.88
Kazakhstan							13.40					
Turkmenistan							24.80					
Uzbekistan			16.50									
Ukraine	0.11						0.80		8.40	8.22	0.02	0.05
Australia	0.05						3.90		3.20	2.85	0.01	0.01
New Zealand												
Japan	0.10		14.10		13.30		2.70		8.00	9.01	1.30	1.07
South Africa	9.10										0.04	0.19
Developing	8.59		149.10		21.00		39.10		184.00	190.48	195.64	213.66
Chile									5.50	6.18	0.48	0.27
Afghanistan			3.90				3.20				35.00	28.92
Egypt	0.45						0.13		1.00	0.00	47.80	63.60
Iran	0.08		2.00				1.50		13.80	20.38	0.50	0.74
Iraq							12.60		6.00	6.62	0.00	0.00
Jordan									11.40	14.35		
Kuwait									2.60	0.00		
Libya									19.50	0.00		
Oman											0.20	0.31
Saudi Arabia	0.02		1.00				0.63		10.30	9.31	0.60	0.82
Sudan											10.90	11.70
Syria									28.50	28.79		
Turkey							0.19		19.00	25.15	0.35	0.40
United Arab Emirates	0.14								27.40	29.56	6.60	8.19
Yemen											8.80	10.54
Hong Kong					9.70				3.70	4.10		
Malaysia											0.25	0.30
Indonesia	0.10				0.29						1.00	1.14
Sri Lanka			2.50				1.80				1.00	1.81
Pakistan	1.20		5.40		1.30		6.40		3.20	2.99	72.00	77.37
India	0.38										1.70	3.64
Singapore												
Thailand												
China												
Algeria			8.70									
Benin			1.70									
Botswana	0.60											
Gambia												
Kenya	4.50				1.30							
Mali			9.80									
Ghana			7.40									
Gambia			4.00									
Morocco			49.20									
Mauritania			7.40									
Niger			2.50									
Nigeria			5.80								3.00	0.95
Senegal			6.50									
Togo			2.40									
Tunisia			3.80						4.80	6.25	0.01	0.01
Somalia											1.60	1.59
Zimbabwe	0.40											
Other countries	0.72		25.10		8.41		12.65		27.30	36.80	3.85	1.36

Source: Sugar and Beverages Group, FAO

Figure 1 : FAO Composite Price in Real and Nominal Terms (1990=100)

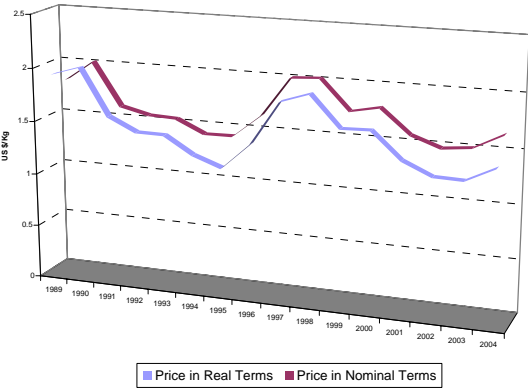


Figure 2: Annual quantities of tea sold and average price received in the the Kolkata Auction

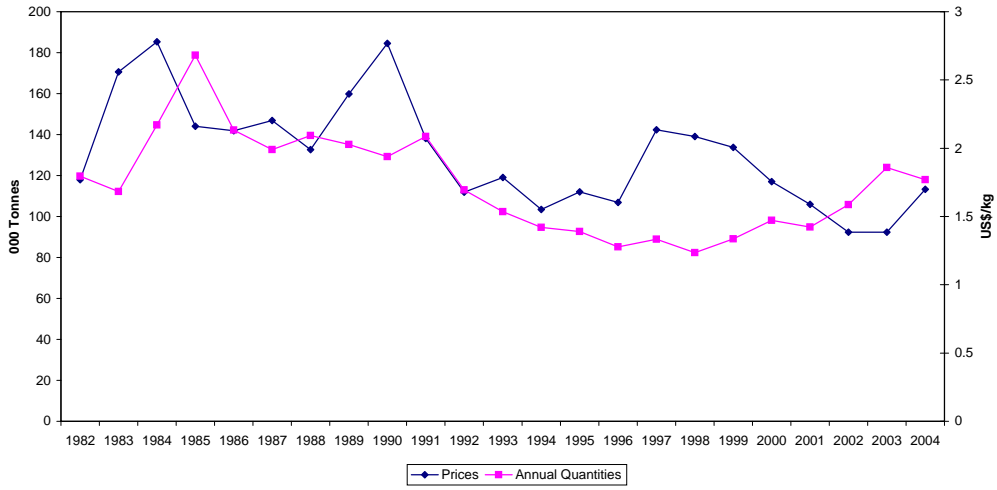


Figure 3: Annual quantities of tea sold and average price received in the Cochin Auction

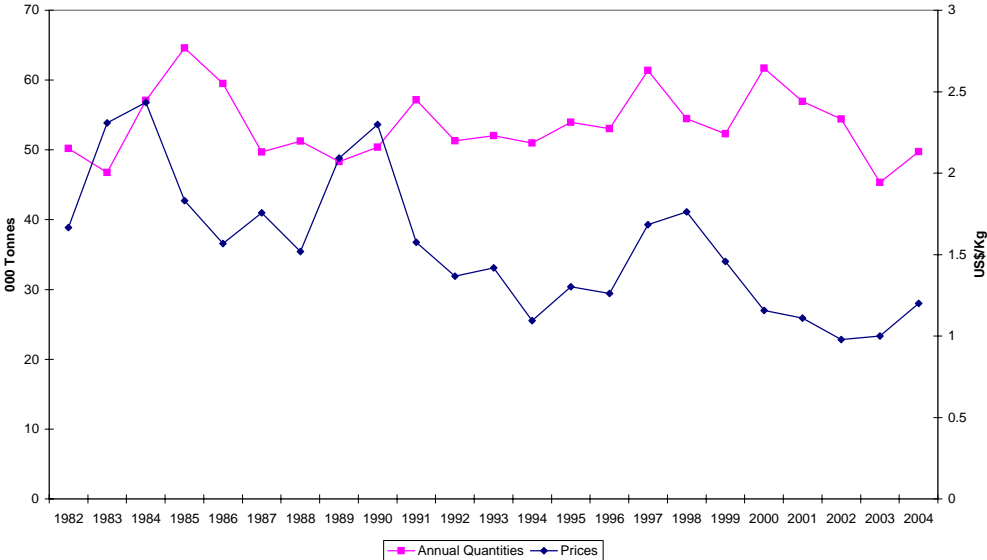


Figure 4: Annual quantities of tea sold and average price received in the Mombasa Auction

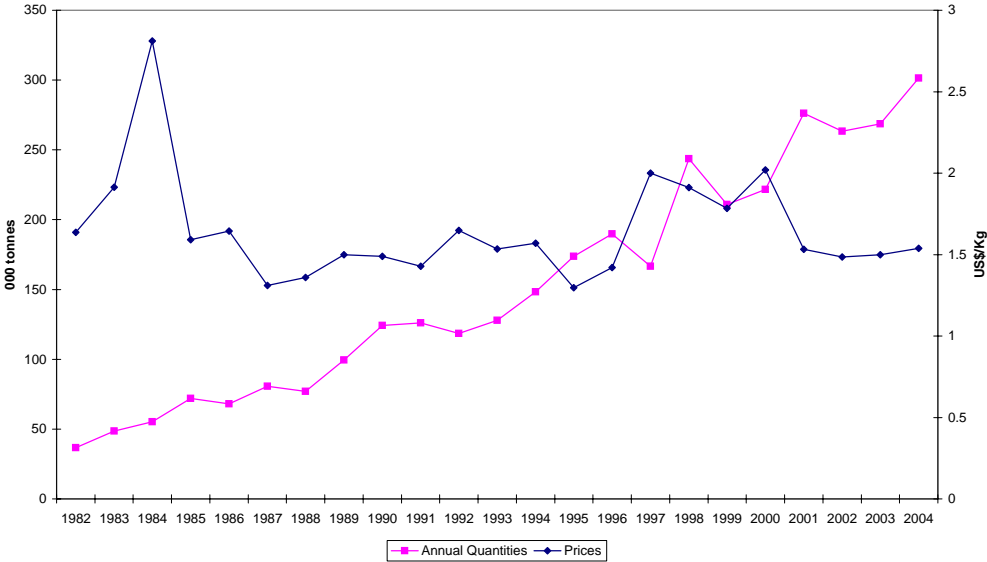


Figure 5: Annual quantities of tea sold and average price received in the Colombo Auction

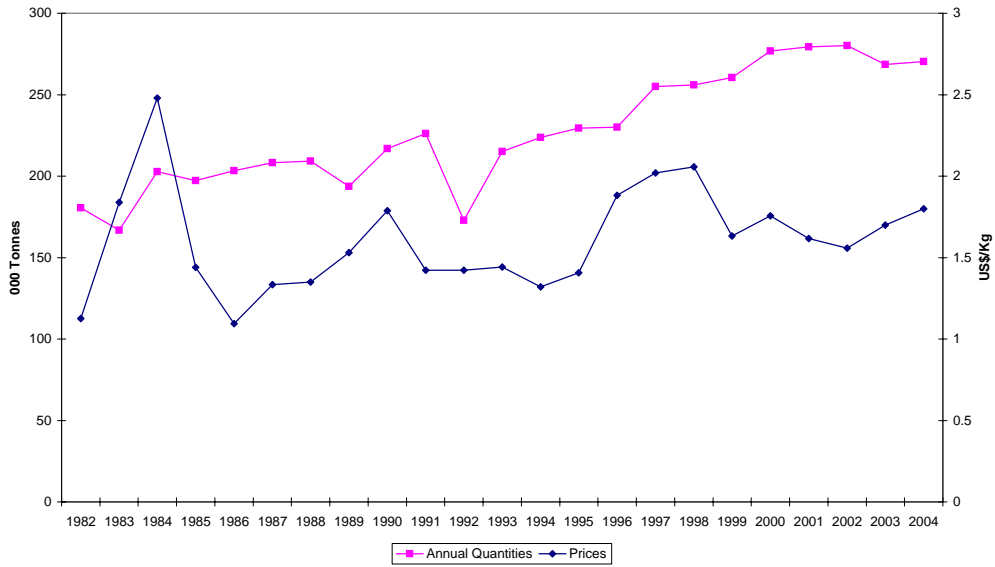


Figure 6: Tea net-imports and the composite price

