

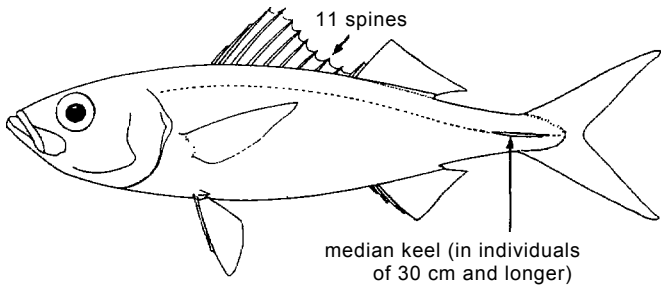
**BONY FISHES**  
GUIDE TO FAMILIES

**LOBOTIDAE**

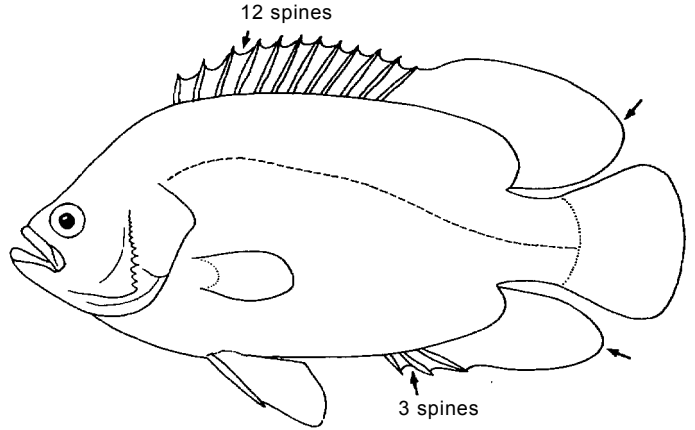
Tripletails

page 78

To over 100 cm; marine, oceanic-pelagic, drifting near the surface. A single species in the area.



*Erythrocles monodi*



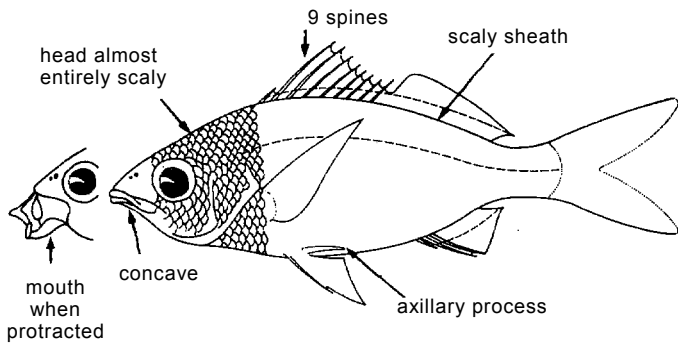
*Lobotes surinamensis*

**GERREIDAE**

Mojarras

page 68

To 25 cm; coastal marine waters to about 60 m depth; also estuaries, coastal lagoons and freshwater; benthic.

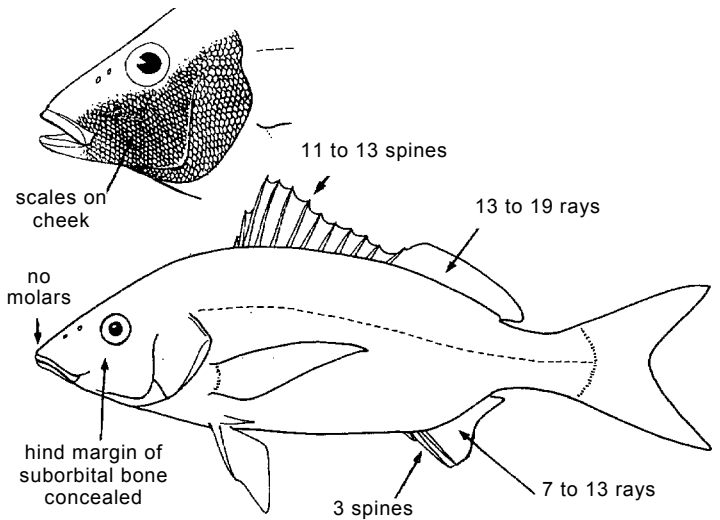


**HAEMULIDAE**  
(= POMADASYIDAE)

Grunts, margates, pigfishes, porkfishes

page 69

To 80 cm; mostly marine, from the coastline to about 200 m depth, and in brackish waters; benthic.

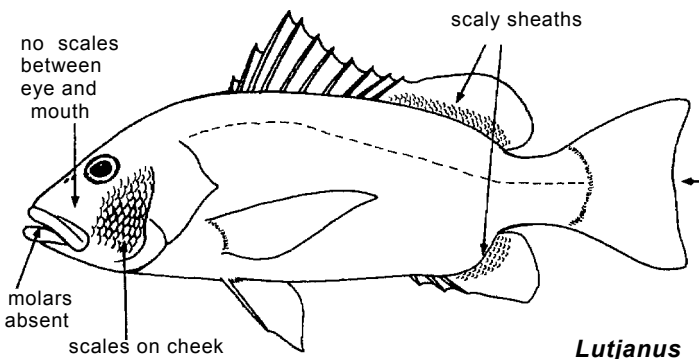


**LUTJANIDAE**

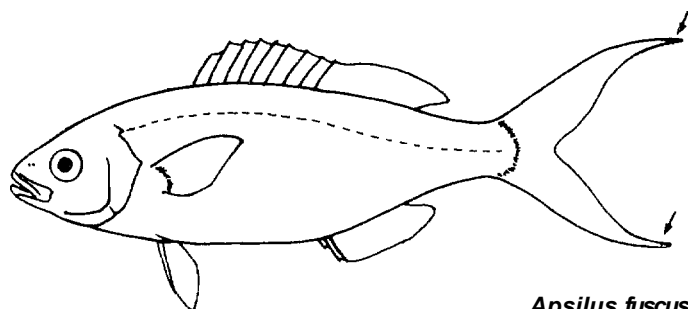
Snappers

page 79

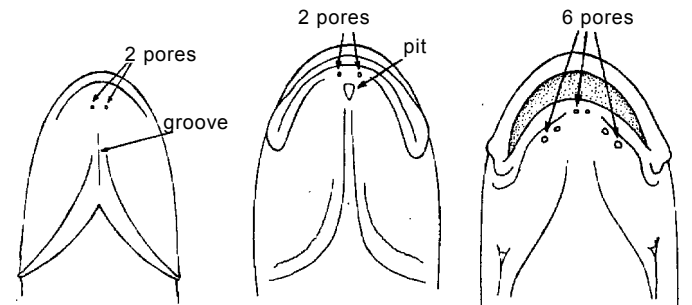
To 80 cm; mostly marine, from the coastline to 450 m depth; some species enter estuaries and even rivers; a few may enter hypersaline lagoons; benthic.



*Lutjanus*



*Apsilus fuscus*



*Brachydeuterus*

*Pomadasys*

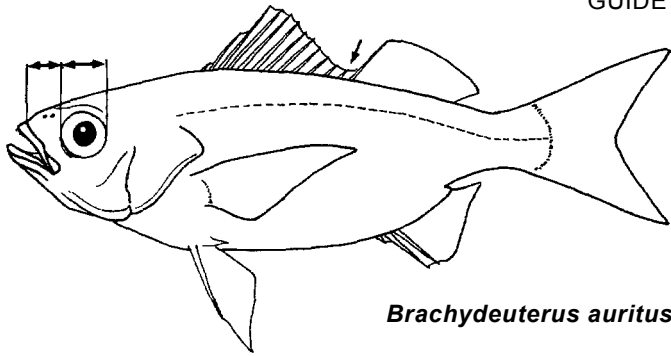
*Plectorhynchus, Parapristipoma*

underside of head

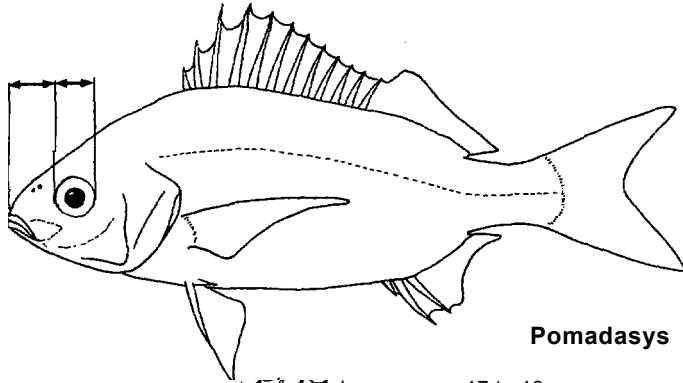
**BONY FISHES**  
GUIDE TO FAMILIES

**SPARIDAE** Porgies, seabreams, pinfishes **page 112**

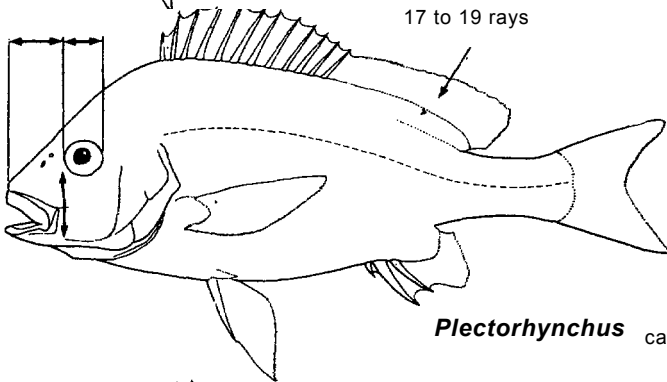
To 75 cm; marine, from the coastline to about 150 m depth; occasionally entering estuaries; benthic.



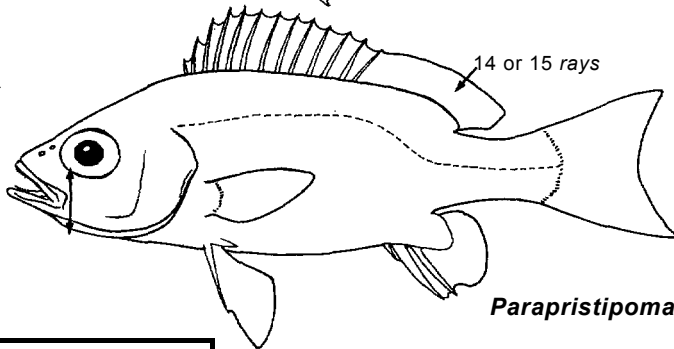
*Brachydeuterus auritus*



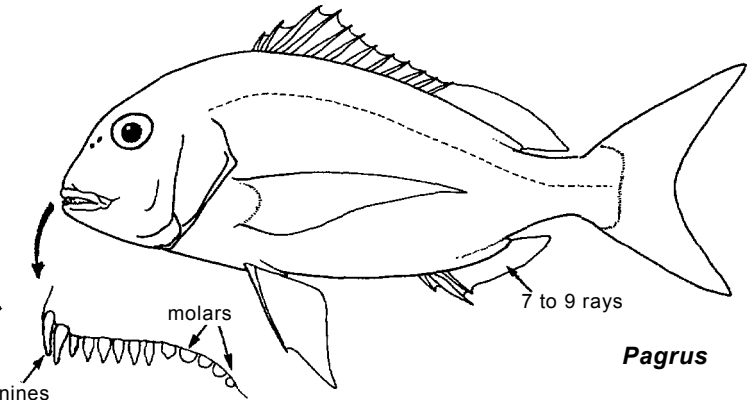
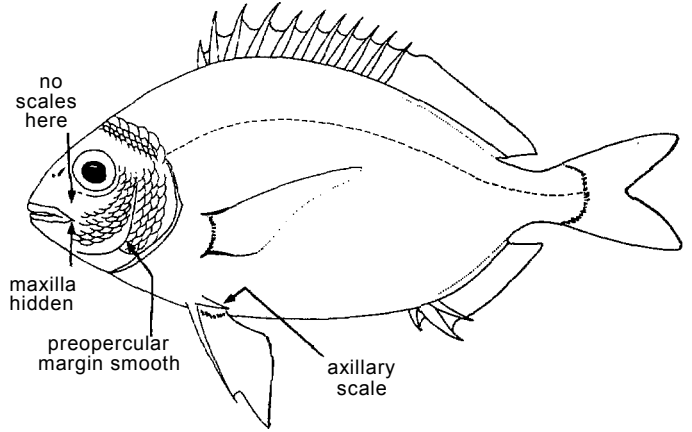
*Pomadasys*



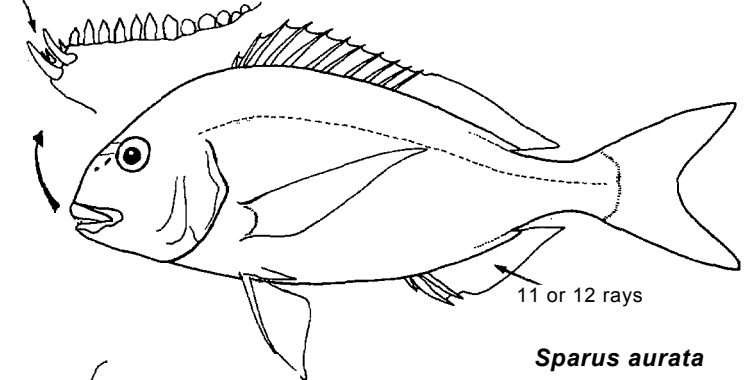
*Plectorhynchus*



*Parapristipoma*



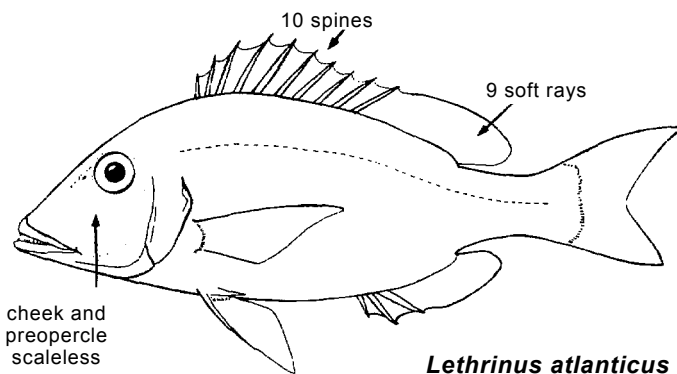
*Pagrus*



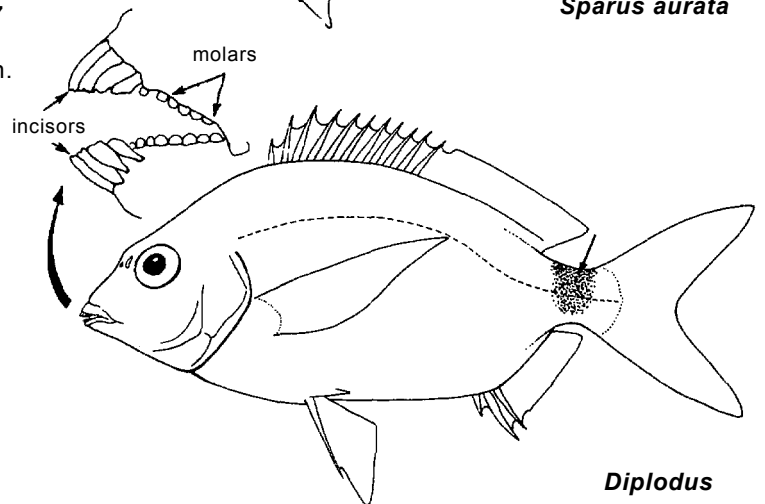
*Sparus aurata*

**LETHRINIDAE** Emperors, scavengers **page 77**

To 50 cm; marine, in coastal waters to about 50 m depth. A single species in the area.

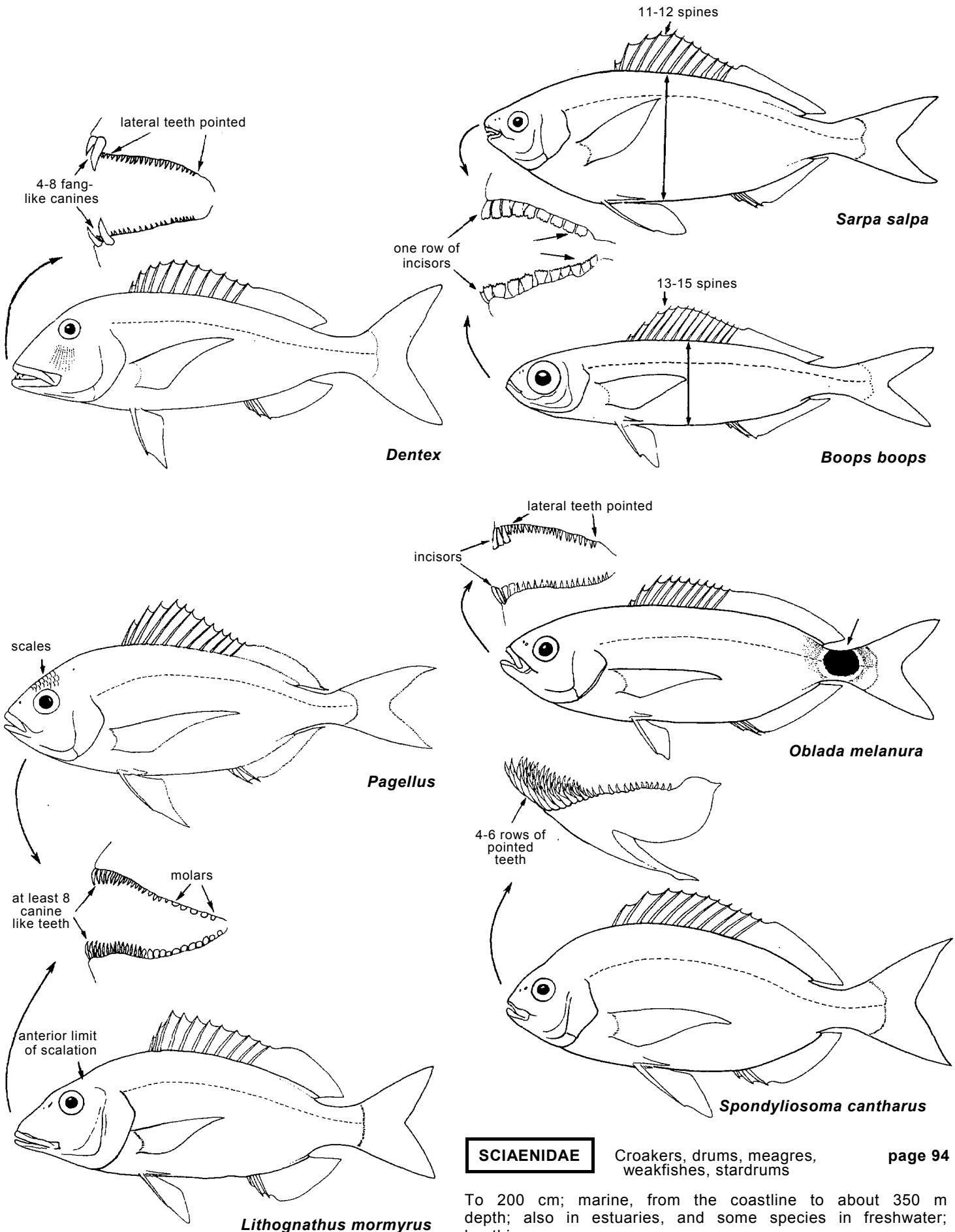


*Lethrinus atlanticus*



*Diplodus*

**BONY FISHES**  
GUIDE TO FAMILIES

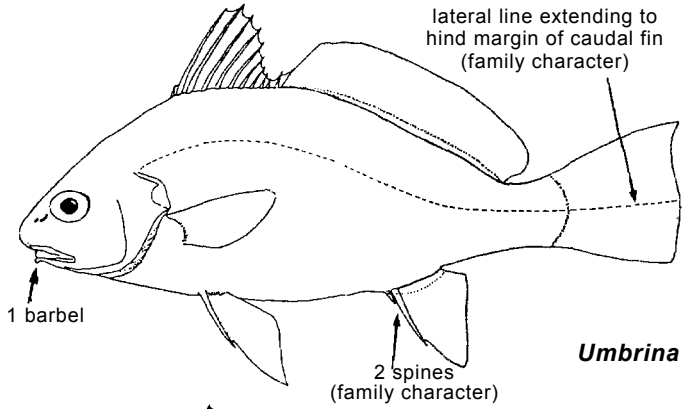


**SCIAENIDAE**

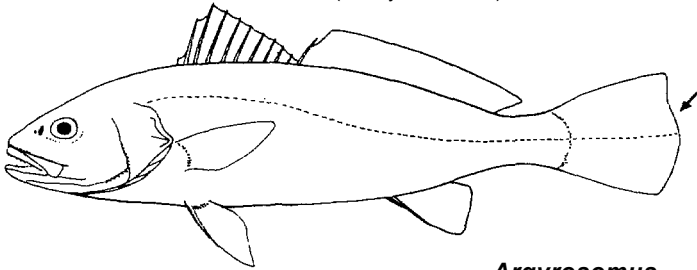
Croakers, drums, meagres, weakfishes, stardrums

To 200 cm; marine, from the coastline to about 350 m depth; also in estuaries, and some species in freshwater; benthic.

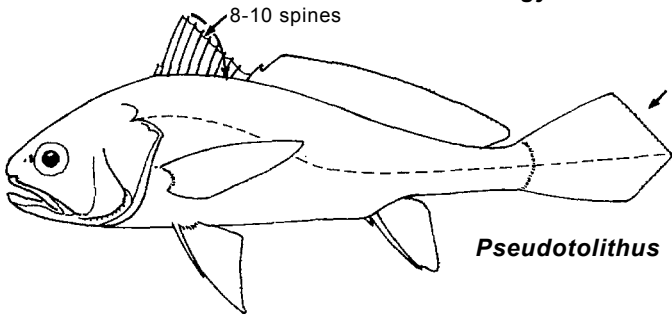
**BONY FISHES**  
GUIDE TO FAMILY



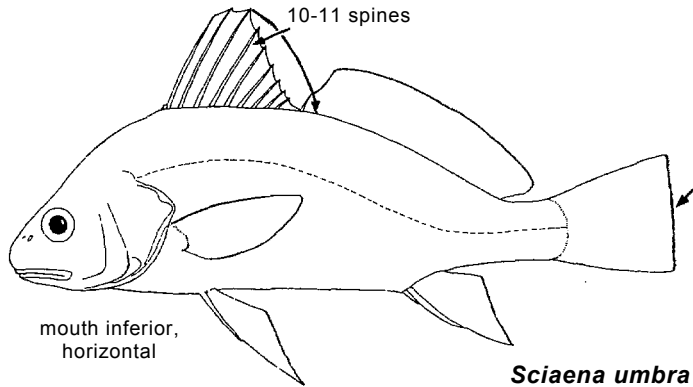
**Umbrina**



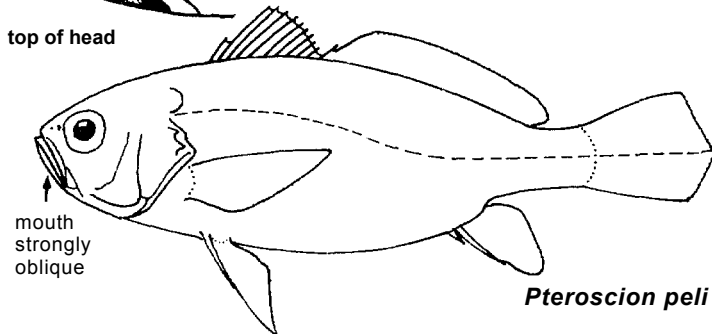
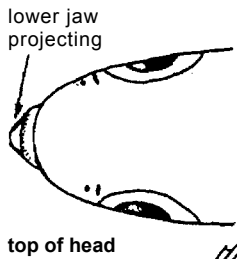
**Argyrosomus**



**Pseudotolithus**



**Sciaena umbra**



**Pteroscion peli**

simple

arborescent  
appendices

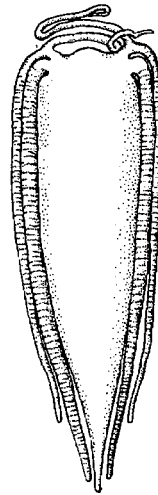
tubular  
appendices

arborescent  
appendices



**Sciaena, Umbrina**

**Pteroscion Pseudotolithus Argyrosomus**



**Miracorvina**

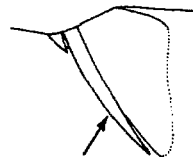


**Pentheroscion**



**Atractoscion**

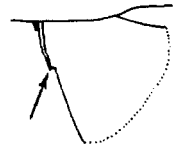
swimbladder (internal character)



**Pseudotolithus (Fonticulus)**



**Miracorvina**



**Pentheroscion**

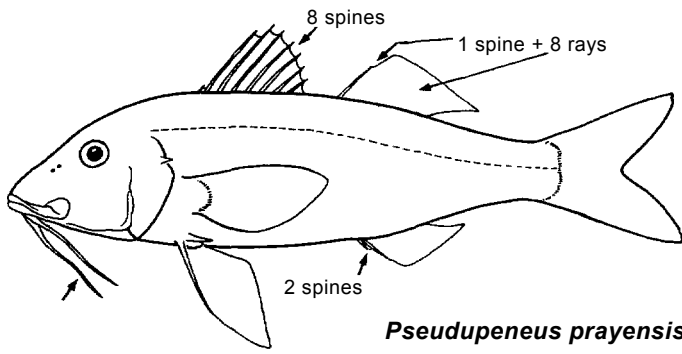
anal fin

**MULLIDAE**

Goatfishes, red mullets

To 55 cm; marine, from the coastline to about 100 m depth; occasionally in estuaries; benthic. A single species in the area.

**BONY FISHES**  
GUIDE TO FAMILIES

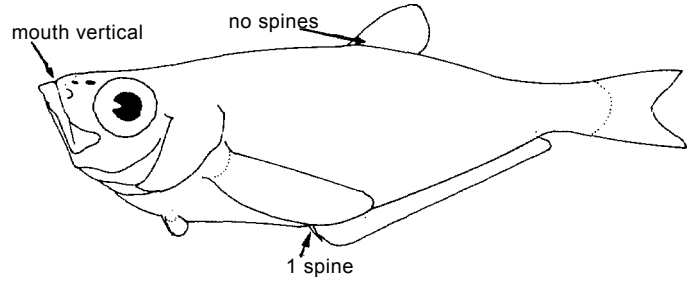


*Pseudupeneus prayensis*

**MONODACTYLIDAE**

Moonies, fingerfishes **page 82**

To 20 cm; in coastal marine waters, estuaries and freshwater. A single species in the area.

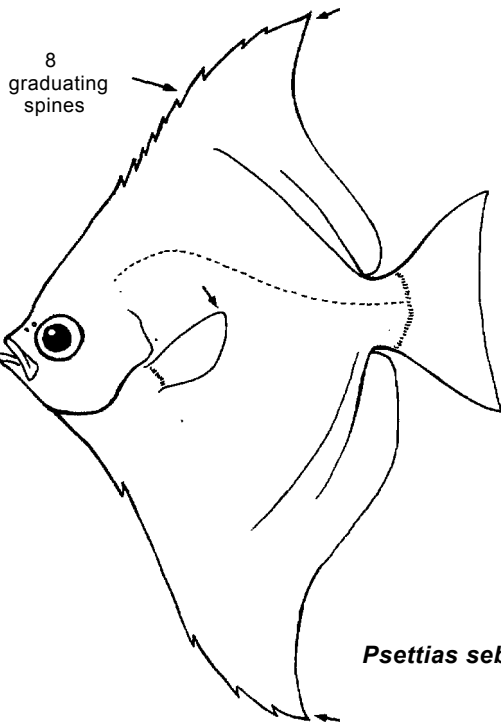


**KYPHOSIDAE**

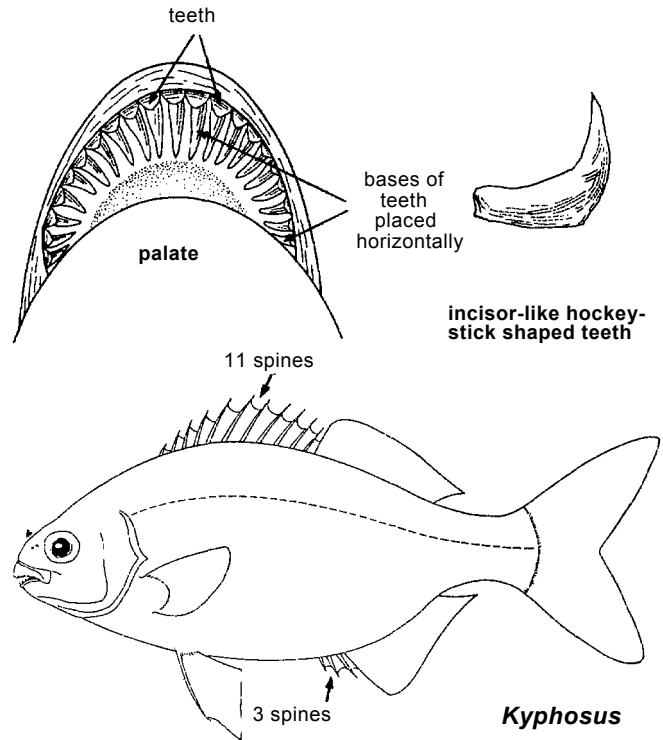
Sea chubs

**page 75**

To 76 cm; marine, shallow coastal waters (usually less than 50 m), on seagrass beds and reefs, or pelagic among floating sargassum weeds.



*Psettias sebae*

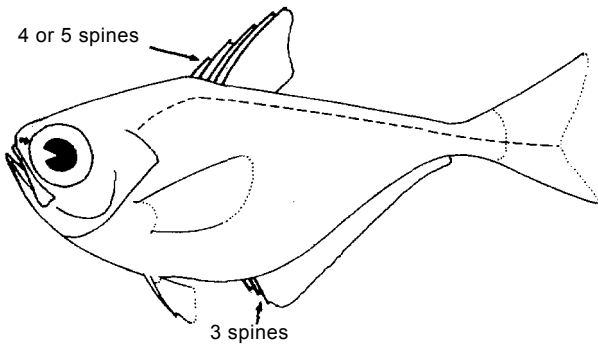


*Kyphosus*

**PEMPHERIDIDAE**

Sweepers

To about 15 cm; marine, from the coastline to about 80 m depth; some enter river estuaries; mostly benthic.

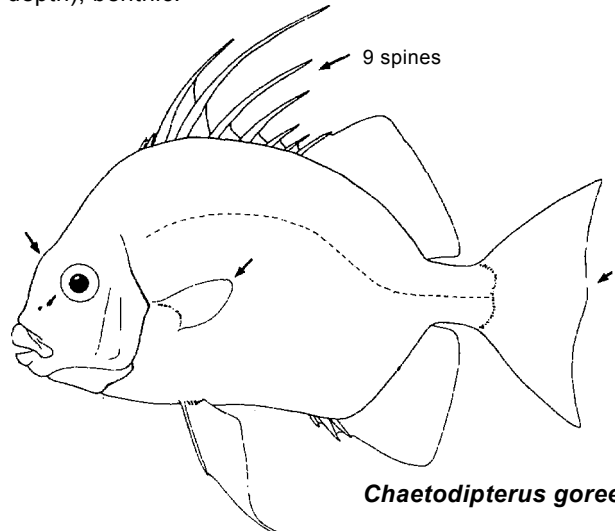


**EPHIPPIDIDAE**

Spadefishes

**page 63**

To about 30 cm; marine, in shallow waters (to about 30 m depth); benthic.



*Chaetodipterus gorensis*

**BATHYCLUPEIDAE**

Bathyupeids

To about 20 cm; marine, mostly between 350 and 800 m, but occasionally at lesser depth; oceanic mesopelagic.

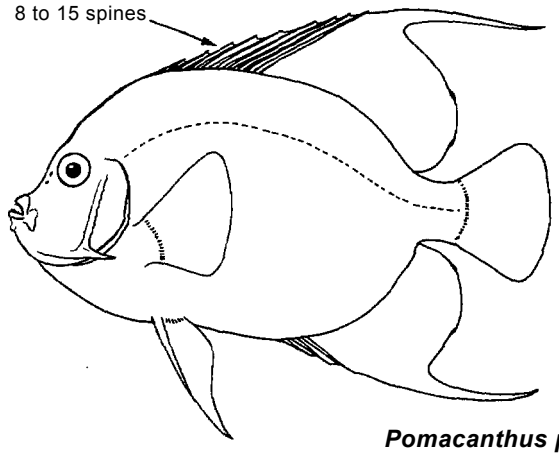
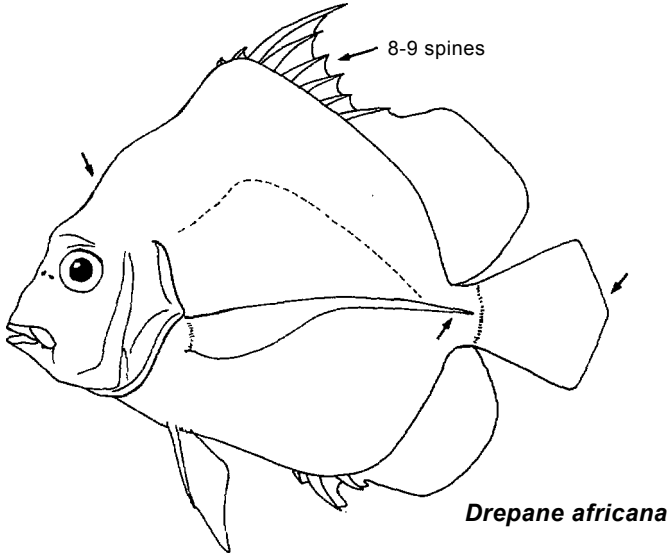
**BONY FISHES**  
GUIDE TO FAMILIES

**DREPANIDAE**

Sicklefishes

page 62

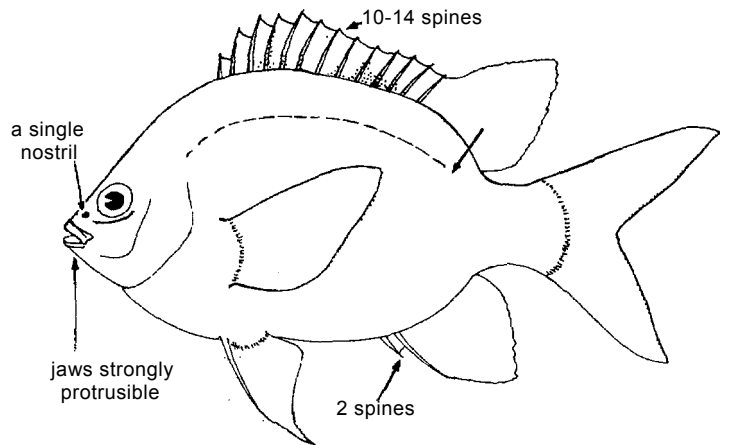
To about 40 cm; marine, from about 20 to 50 m depth. A single species in the area.



**POMACENTRIDAE**

Damselfishes gregories, majors, sergeants, chromis

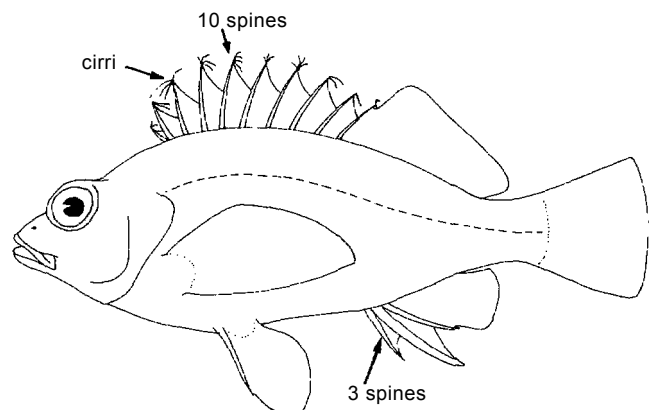
To 25 cm; marine in coastal waters, usually at less than 15 m depth; also in estuaries; mostly benthic. Several species taken occasionally.



**CIRRHITIDAE**

Hawkfishes

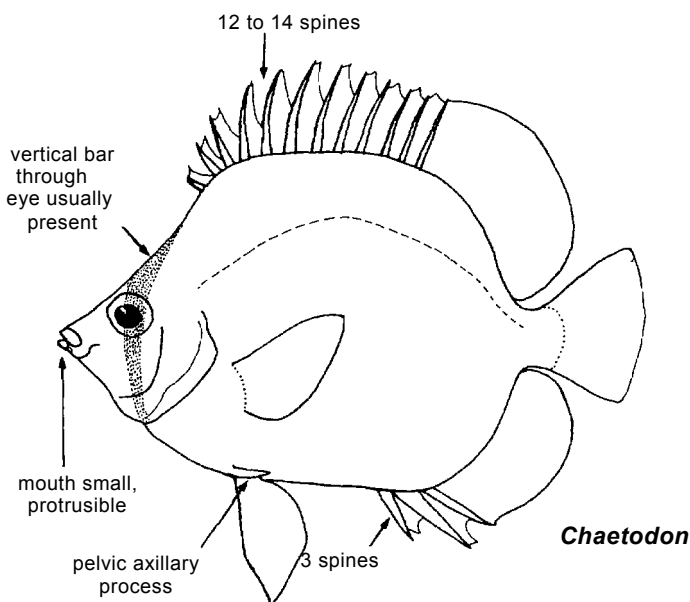
To about 9 cm; marine, in shallow waters, usually less than 20 m depth; benthic.



**CHAETODONTIDAE**

Butterflyfishes

To about 20 cm; marine, usually in shallow waters but occasionally extending to about 100 m depth; benthic.



**POMACANTHIDAE**

Angelfishes

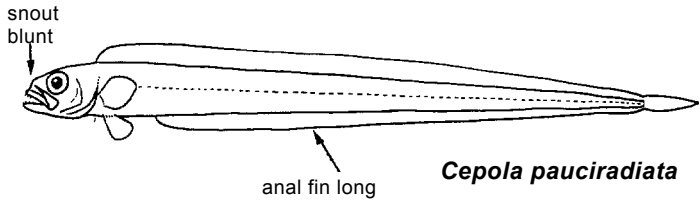
page 91

To 40 cm; marine, from the coastline to about 50 m depth; benthic.

**BONY FISHES**  
GUIDE TO FAMILIES

**CEPOLIDAE** Bandfishes

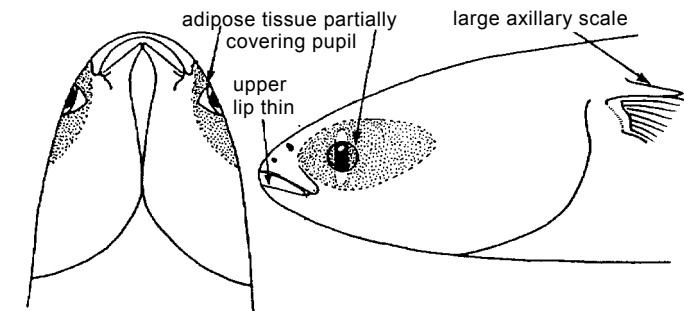
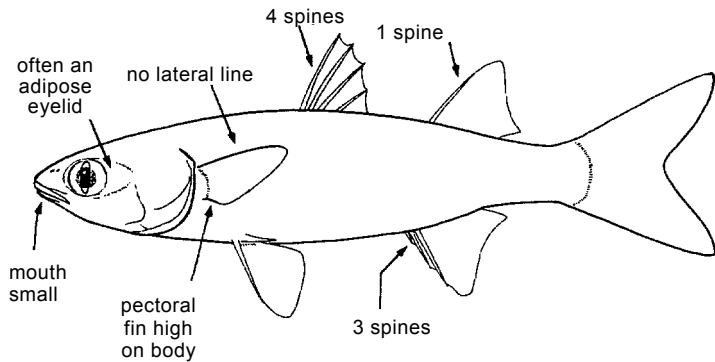
To 70 cm; marine, to below 200 m; benthic. Occasionally taken in bottom trawls. A single species in the area.



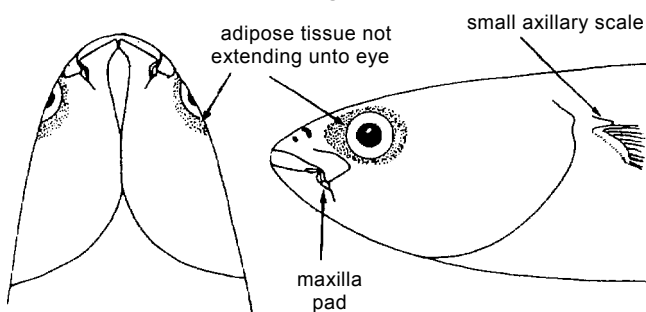
**MULLETS** - Perciformes: Mugiloidei  
Body elongate; head flattened, mouth small; pectoral fins high on body; 2 dorsal fins, sides silvery; no lateral line.

**MUGILIDAE** Mulletts page 83

To about 120 cm; freshwaters, estuaries, brackish and hypersaline lagoons and coastal marine waters at shallow depths (less than 20 m); mostly benthic in their food habits, but usually found near the surface.



*Mugil*

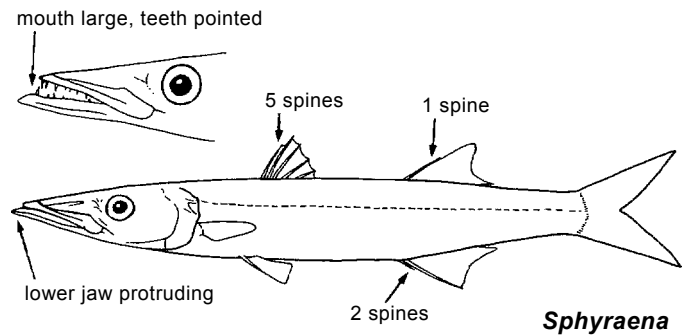


*Liza*

**BARRACUDAS** - Perciformes: Sphyraenoidei  
Body elongate, generally silvery on sides; head and snout both very long; teeth strong; 2 dorsal fins.

**SPHYRAENIDAE** Barracudas, sennets page 119

To 200 cm; marine, from the coastline to about 100 m depth; ranging from just off the bottom to pelagic.

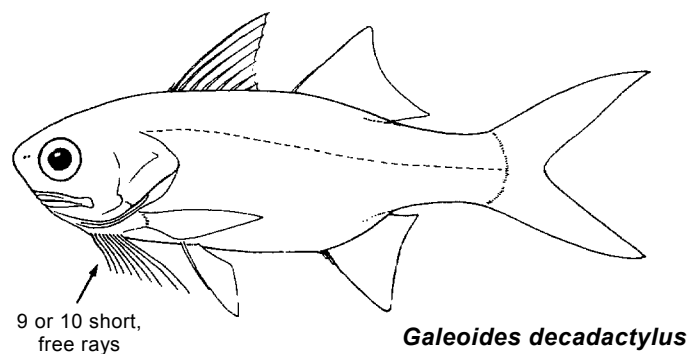


*Sphyraena*

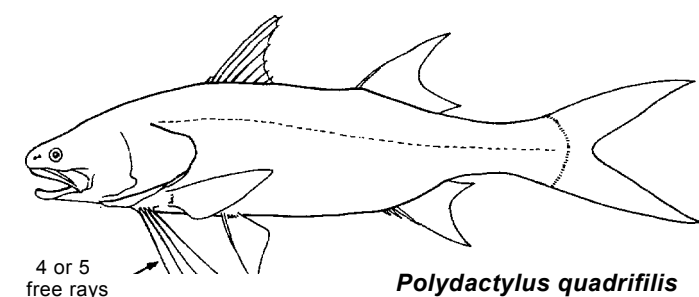
**THREADFINS** - Perciformes: Polynemoidei  
Snout conical, projecting beyond mouth; pectoral fins in two parts, the lower with 3 or more free filamentous rays.

**POLYNEMIDAE** Threadfins page 90

To about 200 cm; marine coastal waters (usually less than 30 m depth), estuaries, coastal lagoons and freshwater; benthic.

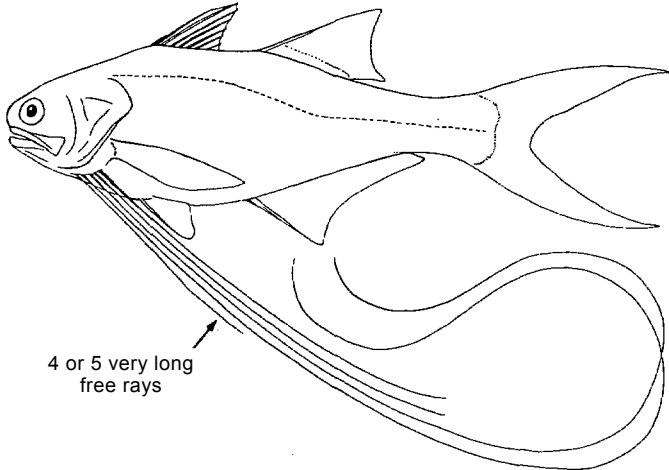


*Galeoides decadactylus*



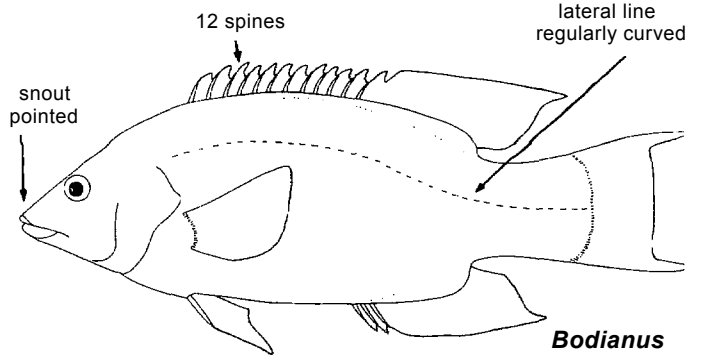
*Polydactylus quadrifilis*

**BONY FISHES**  
GUIDE TO FAMILIES



4 or 5 very long free rays

*Pentanemus quinquarius*

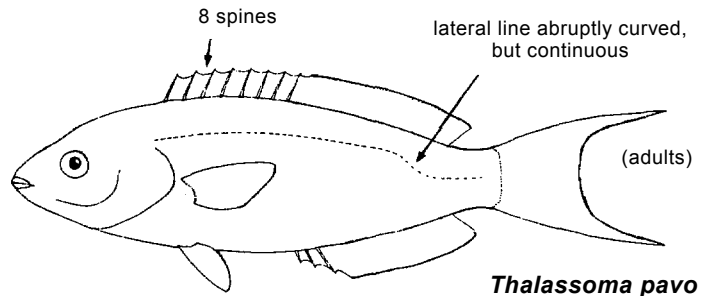


snout pointed

12 spines

lateral line regularly curved

*Bodianus*



8 spines

lateral line abruptly curved, but continuous

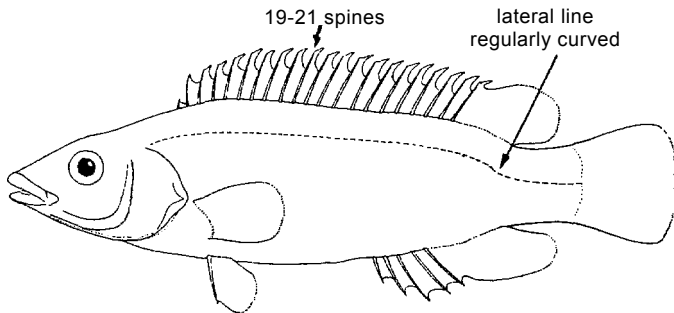
(adults)

*Thalassoma pavo*  
(male)

**WRASSES AND ALLIES** - Perciformes: Labroidei. Well developed teeth, coalesced into plates in the parrotfishes; scales usually large and cycloid (smooth); body compressed; usually colourful species.

**LABRIDAE** Wrasses, hogfishes, razorfishes **page 76**

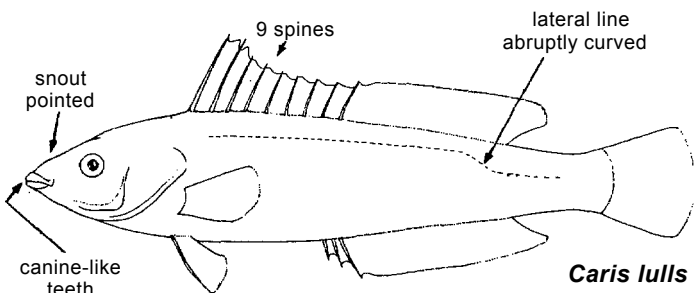
To 50 cm; marine, from the coastline to about 120 m depth; benthic.



19-21 spines

lateral line regularly curved

*Acantholabrus palloni*



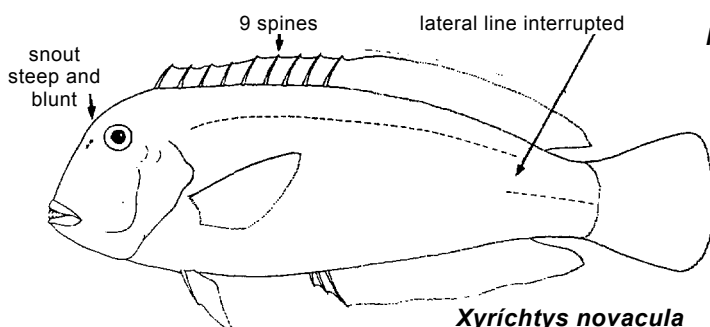
9 spines

lateral line abruptly curved

snout pointed

canine-like teeth (feature of the family)

*Caris lullis*



9 spines

lateral line interrupted

snout steep and blunt

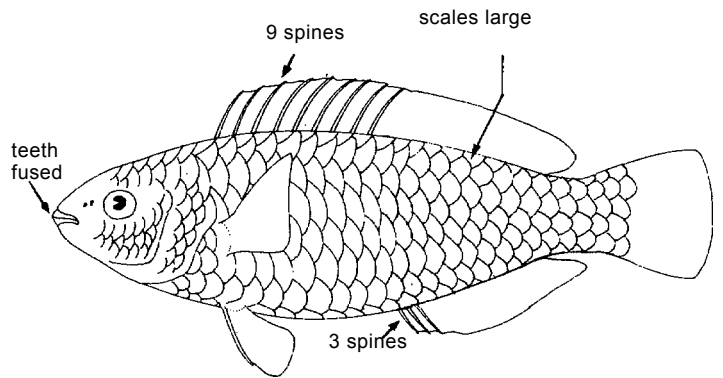
*Xyrichtys novacula*

**SCARIDAE**

Parrotfishes

**page 92**

To 60 cm; marine, in shallow waters rarely below 60 m depth; benthic.

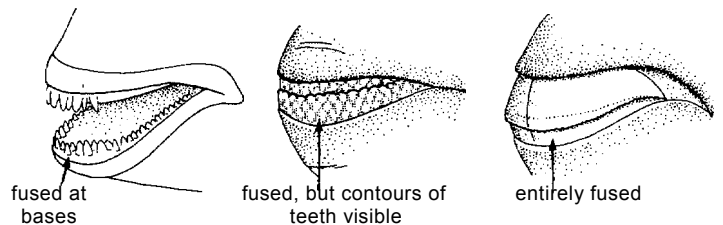


9 spines

scales large

teeth fused

3 spines



fused at bases

fused, but contours of teeth visible

entirely fused

*Nicholsina*

*Sparisoma*

*Scarus*

teeth

**WEEVERFISHES AND ALLIES** - Perciformes: Trachinoidei

A diverse assemblage of families difficult to characterize as a group; this suborder must be regarded as provisional.