

## BONY FISHES

***Decapterus punctatus*** (Cuvier, 1829)

CARANGIDAE

**Synonyms:** *Decapterus sanctaehelenae* (Cuvier, 1833).

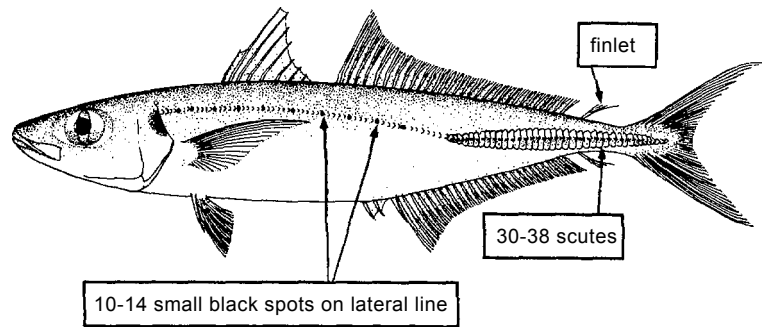
**FAO names :** En - Round scad; Fr - Comète quiaquia; Sp - Macarela chuparaco.

**Size:** at least 25 cm, common to 15 cm.

**Fishing gear :** bottom trawls, purse seines.

**Habitat :** demersal in coastal waters to about 100 m depth; also pelagic, more common in winter.

**Loc.name(s) :**



(see Plate II,12)

***"Decapterus" rhonchus*** (Goeffroy Saint-Hilaire, 1817)

**Synonyms:** *Caranx rhonchus* Geoffroy Saint-Hilaire, 1817; *Caranx angolensis* Fowler, 1919.

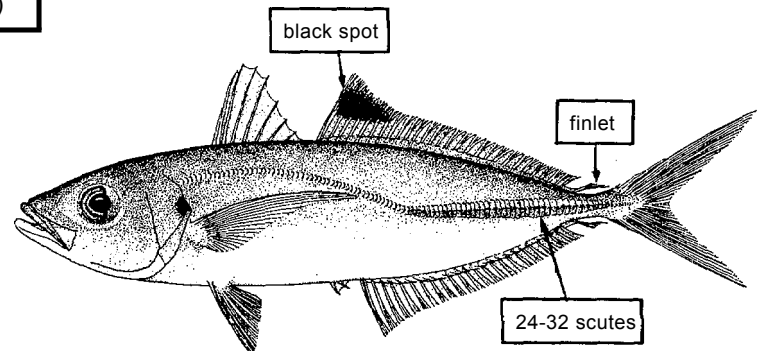
**FAO names :** En - False scad; Fr - Comète coussut; Sp - Macarela real.

**Size :** at least 45 cm, common to 30-36 cm.

**Fishing gear :** bottom trawls, purse seines, set nets.

**Habitat :** frequently near the bottom, between 30 and 60 m depth; also pelagic and near the surface at times.

**Loc.name(s) :**



(see Plate II,13)

***Elagatis bipinnulata*** (Quoy & Gaimard, 1825)

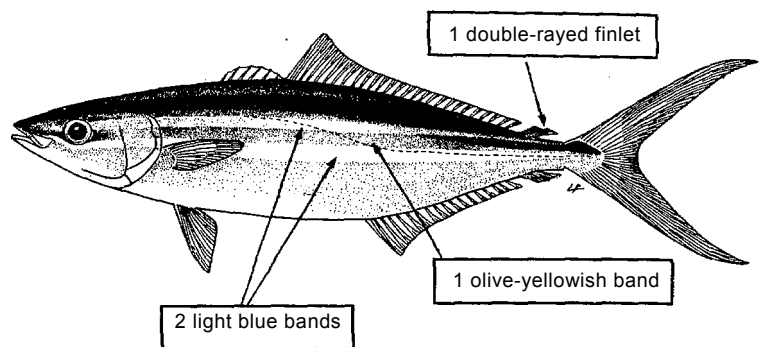
**FAO names :** En - Rainbow runner; Fr - Comète saumon; Sp - Macarela salmón.

**Size :** possibly to 120 cm, common to 80 cm.

**Fishing gear :** purse seines, trolling lines and other line gear.

**Habitat :** warm coastal surface waters; also estuaries.

**Loc.name(s) :**

***Hemicaranx bicolor*** (Günther, 1860)

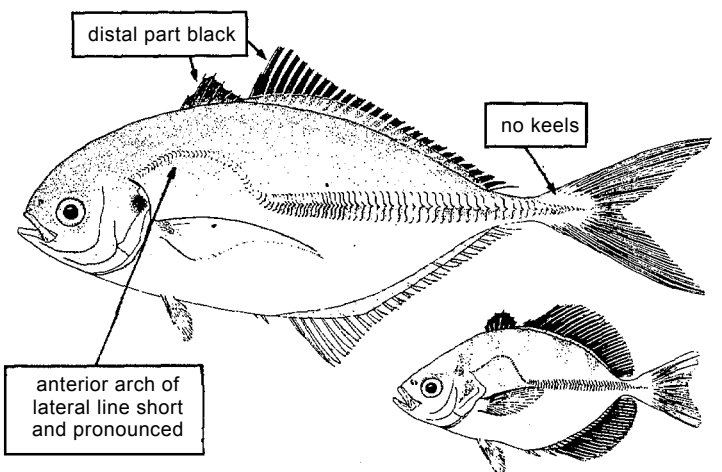
**FAO names :** En - Two-colour jack; Fr - Carangue bicolore; Sp - Casabe bicolor.

**Size :** 70 cm; common to 30 cm.

**Fishing gear :** bottom trawls, purse seines, bottom set nets, line gear.

**Habitat :** mainly coastal, entering brackish water; apparently in mid-water or near the bottom than at the surface; not forming large schools.

**Loc name(s) :**



young of 17.5 cm  
(standard length)

## BONY FISHES

## CARANGIDAE

***Lichia amia*** (Linnaeus, 1758)

**Synonyms:** *Hypacanthus amia* (Linnaeus, 1758).

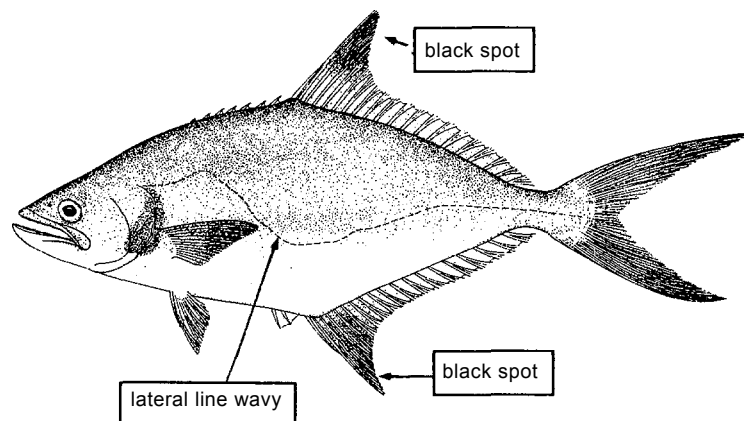
**FAO names :** **En** - Leerfish; **Fr** - Liche né-bé; **Sp** - Palometón.

**Size:** at least 180 cm, common to 100 cm.

**Fishing gear :** trawls, purse seines, beach seines, line gear.

**Habitat :** pelagic in coastal waters and estuaries to 60 m depth; regularly caught but not very abundant.

**Loc.name(s) :**



(see Plate II, 14)

***Naucrates ductor*** (Linnaeus, 1758)

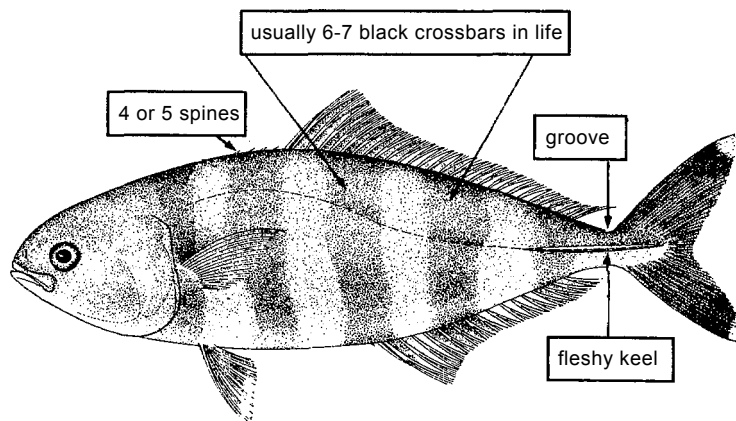
**FAO names :** **En** - Pilotfish; **Fr** - Poisson-pilote; **Sp** - Pez piloto.

**Size :** 70 cm, common to 45 cm.

**Fishing gear :** pelagic trawls.

**Habitat :** mainly pelagic; often associated with large sharks, rays, turtles, ships and floating logs.

**Loc.name(s) :**

***Selar crumenophthalmus*** (Bloch, 1793)

**Synonyms :** *Trachurops crumenophthalmus* (Bloch, 1793).

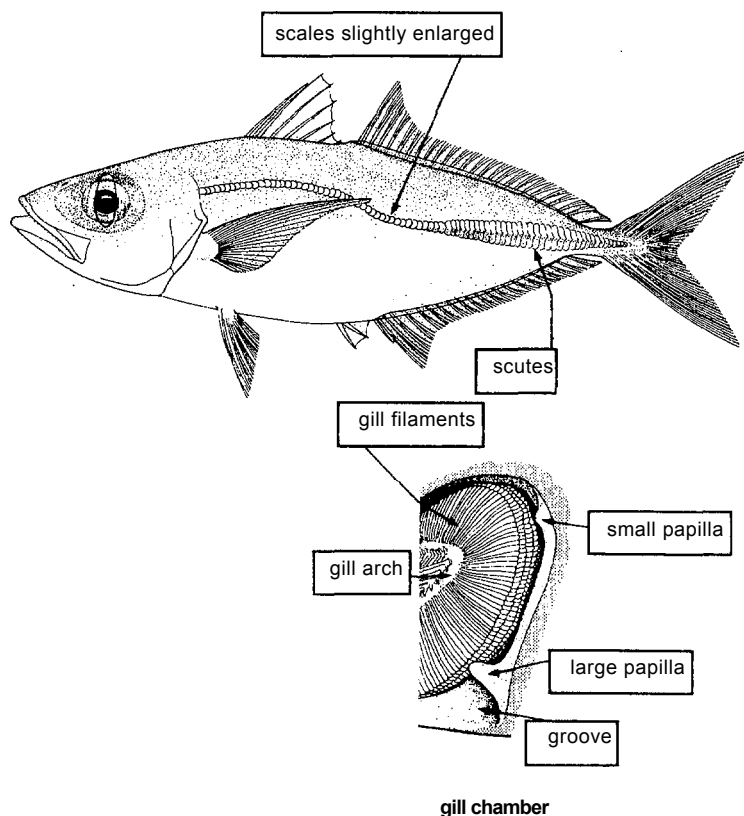
**FAO names :** **En** - Bigeye scad; **Fr** - Selar coulisou; **Sp** - Chicharro ojón.

**Size:** 60 cm, common to 25 cm.

**Fishing gear :** bottom trawls, purse seines, set gillnets, line gear.

**Habitat :** shallow coastal waters, more regularly found during the hot season.

**Loc.name(s) :**



## BONY FISHES

## CARANGIDAE

***Selene dorsalis*** (Gill, 1863)

**Synonyms** : *Vomer gibbiceps* Gilchrist & Thompson, 1914; often misidentified as *Vomer setapinnis* (Mitchill, 1815).

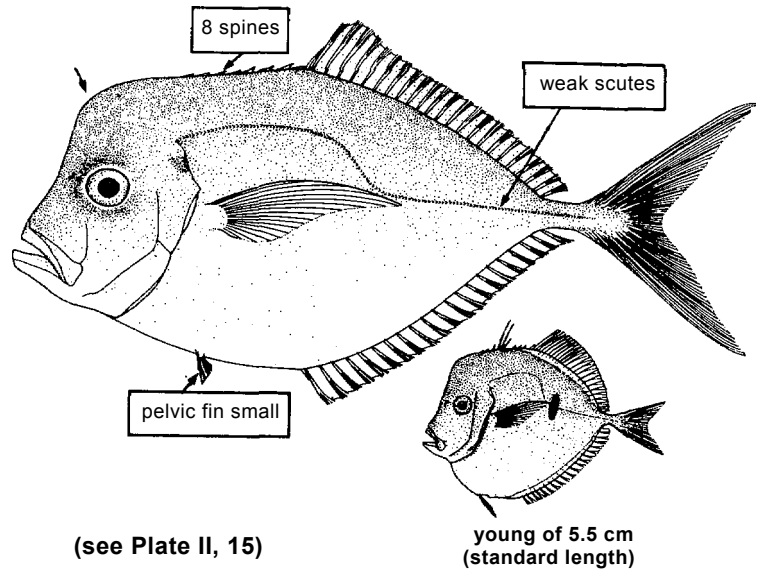
**FAO names** : **En** - African moonfish; **Fr** - Musso africain; **Sp** - Jorobado africano.

**Size** : common to 20 cm, never reaching large sizes.

**Fishing gear** : bottom trawls, purse seines, set nets, line gear.

**Habitat** : coastal waters to 60 cm depth; forms schools; regularly found in winter (May-October).

**Loc.name(s)** :

***Seriola carpenteri*** Mather, 1971

**FAO names** : **En** - Guinean amberjack; **Fr** - Sériole guinéenne; **Sp** - Medregal de Guinea.

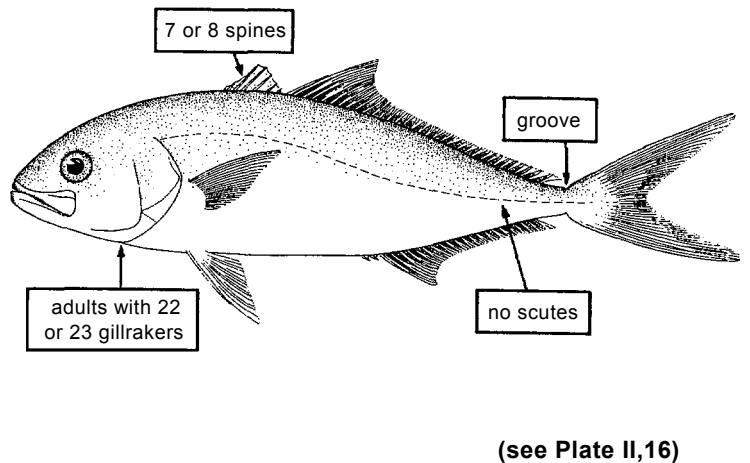
**Size** : at least 54 cm.

**Fishing gear** : pelagic and bottom trawls, purse seines, set gillnets.

**Habitat** : adults pelagic and demersal in coastal waters, from the surface to at least 200 m depth.

**Remarks** : this species is often confused with *Seriola dumerili*.

**Loc.name(s)** :

***Seriola dumerili*** (Risso, 1810)

**Synonyms** : *Seriola rhombica* Smith, 1959.

**FAO names** : **En** - Greater amberjack; **Fr** - Sériole couronnée; **Sp** - Pez de limón.

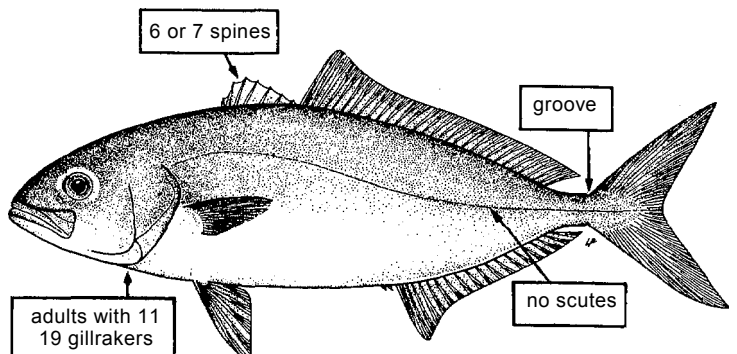
**Size** : to 90 cm, common to 80 cm.

**Fishing gear** : pelagic and bottom trawl, line gear.

**Habitat** : adults pelagic, not common in coastal waters.

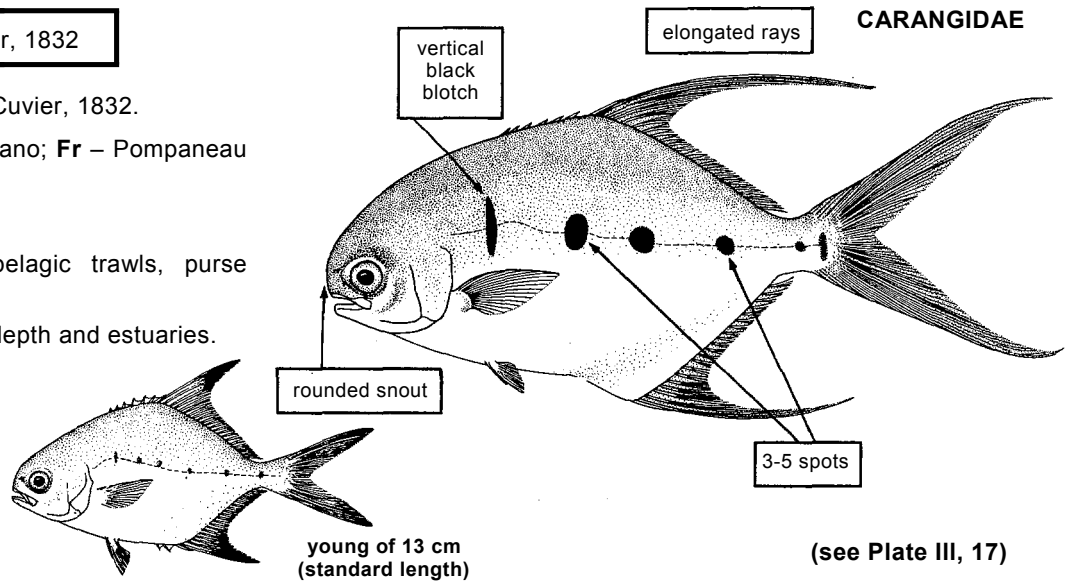
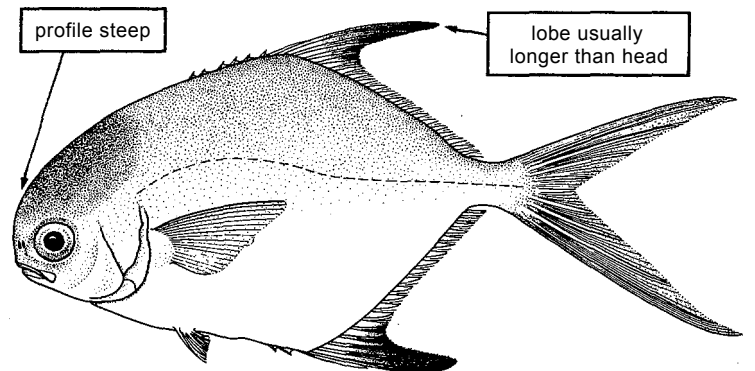
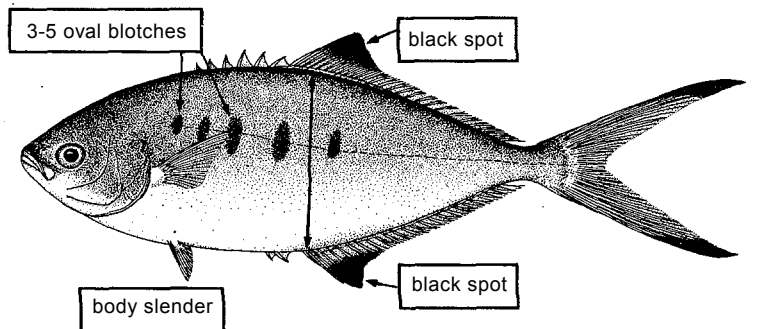
**Remarks** : presence in the Gulf of Guinea to be confirmed.

**Loc.name(s)** :

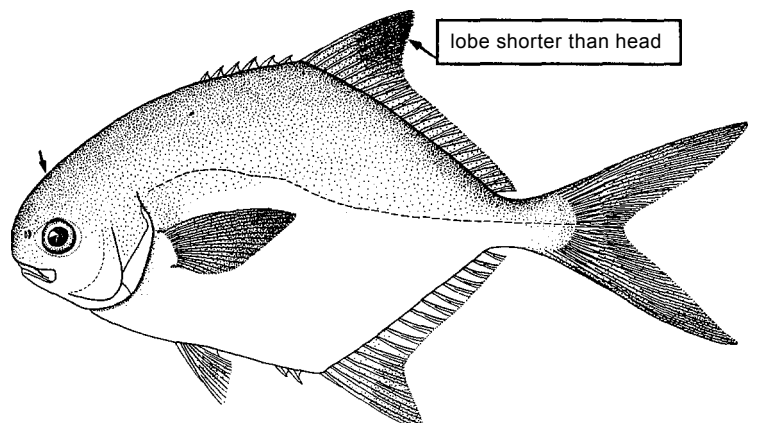


## BONY FISHES

CARANGIDAE

***Trachinotus goreensis*** Cuvier, 1832**Synonyms** : *Trachinotus myrias* Cuvier, 1832.**FAO names** : **En** - Longfin pompano; **Fr** - Pompaneau tacheté; **Sp** - Pámpano cojonovo.**Size** : 40 cm, common to 30 cm.**Fishing gear** : bottom and pelagic trawls, purse seines.**Habitat** : coastal waters to 60 m depth and estuaries.**Loc.name(s)** :***Trachinotus maxillosus*** Cuvier, 1832**FAO names** : **En** - Galloon pompano; **Fr** - Pompaneau chevron; **Sp** - Pámpano galonero.**Size** : 60 cm, common to 35 cm.**Fishing gear** : bottom and pelagic trawls, purse seines, beach seines.**Habitat** : shallow coastal waters and estuaries.**Loc.name(s)** :***Trachinotus ovatus*** (Linnaeus, 1758)**Synonyms** : *Caesiomorus glaucus* Fowler, 1936.**FAO names** : **En** - Pompano; **Fr** - Palomine; **Sp** - Pámpano blanco.**Size** : about 40 cm, common to 30 cm.**Fishing gear** : bottom and pelagic trawls, purse seines, beach seines, line gear.**Habitat** : clear coastal waters, forming schools.**Loc.name(s)** :

(see Plate III,18)

***Trachinotus teraia*** Cuvier, 1832**FAO names** : **En** - Terai pompano; **Fr** - Pompaneau né-bé; **Sp** - Pámpano terayo.**Size** : 68 cm.**Fishing gear** : bottom and pelagic trawls, purse seines.**Habitat** : coastal waters; often present in estuaries and occasionally even in rivers.**Loc.name(s)** :

(see Plate III,19)

## BONY FISHES

## CARANGIDAE

***Trachurus trachurus*** (Linnaeus, 1758)

**Synonyms** : *Trachurus capensis* Castelnau, 1861.

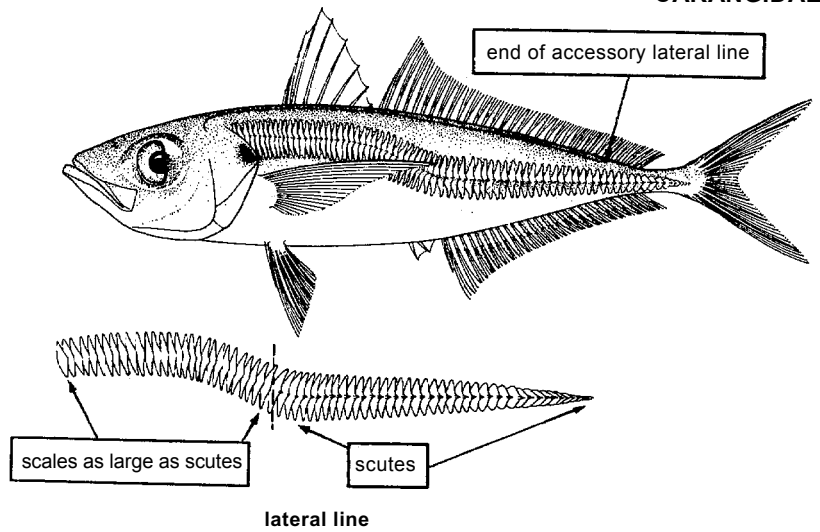
**FAO names** : **En** - Atlantic horse mackerel; **Fr** - Chinchard d'Europe; **Sp** - Jurel.

**Size** : about 40 cm (fork length), common to 25 cm.

**Fishing gear** : pelagic and bottom trawls, purse seines.

**Habitat** : sandy bottoms from 100 to 200 m depth; sometimes pelagic; forms schools.

**Loc.name(s)** :

***Trachurus trecae*** Cadenat, 1949

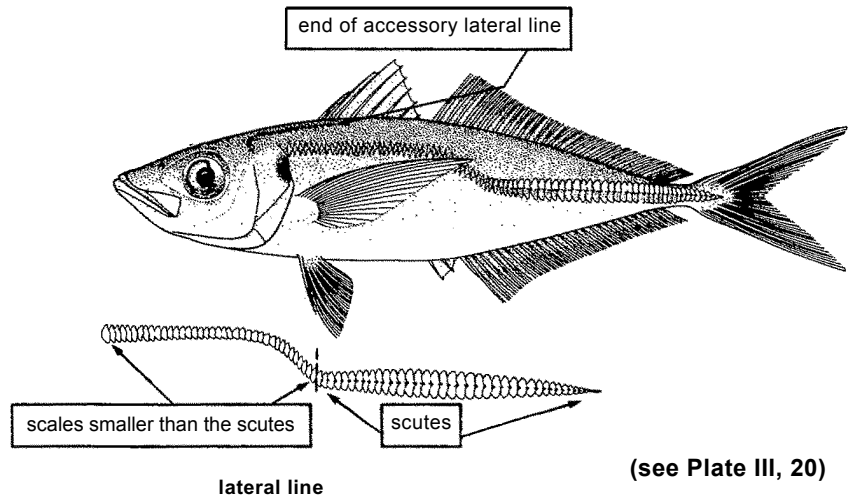
**FAO names** : **En** - Cunene horse mackerel; **Fr** - Chinchard cunène; **Sp** - Jurel cunene.

**Size** : at least 35 cm.

**Fishing gear** : pelagic and bottom trawls, purse seines.

**Habitat** : coastal waters from 20 to 100 m depth; sometimes pelagic, forms schools.

**Loc.name(s)** :

***Uraspis helvola*** (Forster, 1801)

**Synonyms** : formerly identified as *Uraspis secunda* (Poey, 1860); *Uraspis cadenati* Blache & Rossignol, 1961.

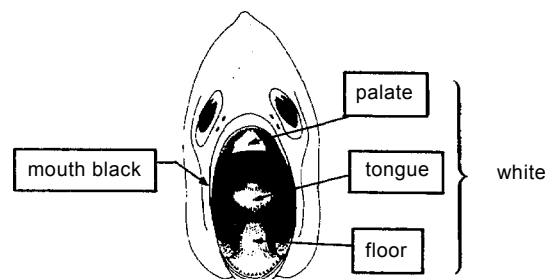
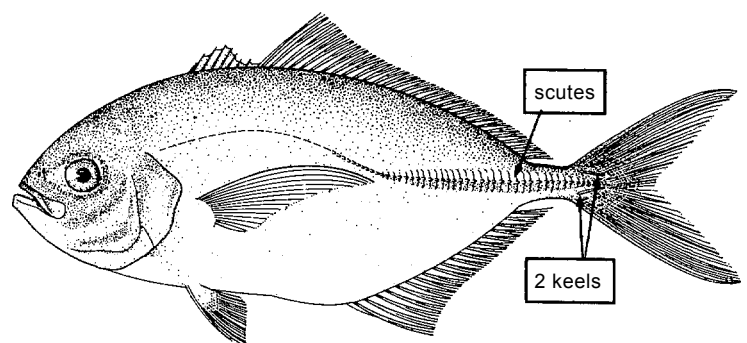
**FAO names** : **En** - Cotton mouth jack; **Fr** - Carangue-coton; **Sp** - Jurel volantín.

**Size** : 50 cm, common to 35 cm.

**Fishing gear** : bottom trawls.

**Habitat** : an oceanic species, pelagic in surface waters as well as demersal; solitary or forming small schools.

**Loc.name(s)** :



front view of head

(see Plate III, 21)