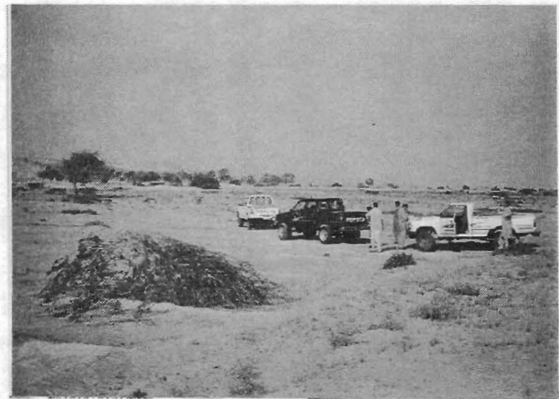


## Appendix 7. Plates



1. Back row (L-R): I.R. Iran team - H. Sanjarani, F. Hormozi, A. Nateghi, M. Jawam; K. Cressman (FAO)  
Front row (L-R): Pakistan team - Z. Ali Khan, I. Ahmed, M. Shah, M. Hussein, M. Magbol.;



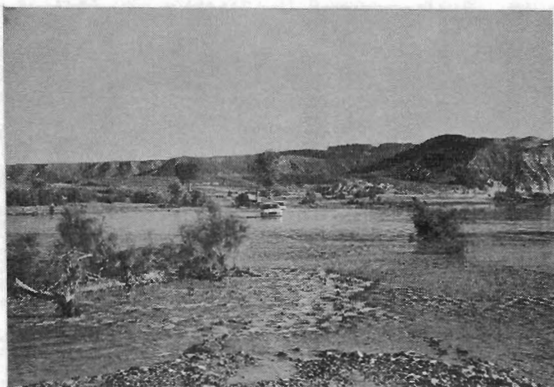
2. Coastal plains east of Chabahar, I.R. Iran at Balisar (2516N/6047E).



3. Coastal plains west of Chabahar, I.R. Iran at Kaikai (2530N/5926E).



4. Central coastal dune area south of Zaribad, I.R. Iran at 2528N/5928E).



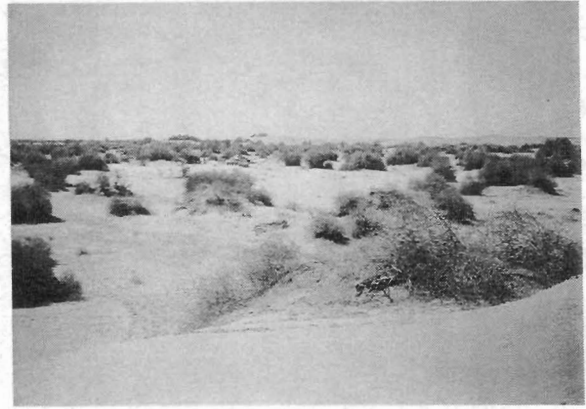
5. Rudkhaneh Bent (2542N/5920E) west of Zaribad, I.R. Iran flowing after heavy rains in the coastal mountains 36 hours earlier.



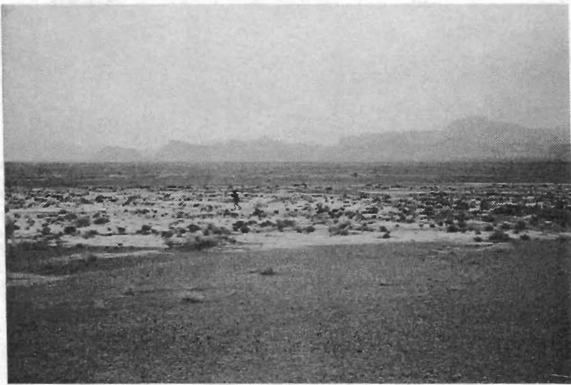
6. Small depression and wadi at the base of the Kuh Basud foothills north-west of Zaribad, I.R. Iran at Jozdar (2546N/5913E).



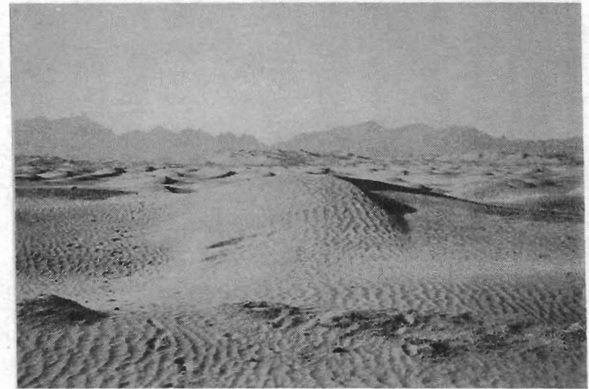
7. The coastal plains east of Jask, I.R. Iran.



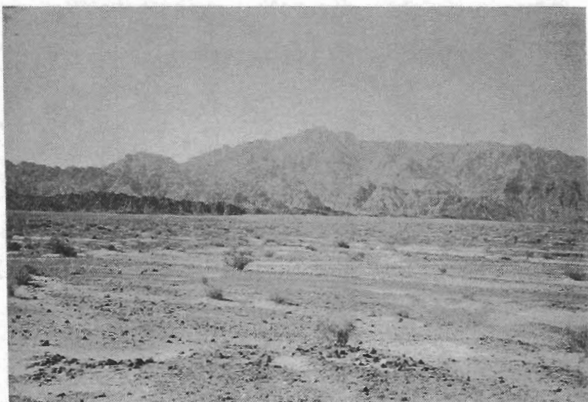
8. The interior valley of Iranshahr, I.R. Iran at Sardegal (2714N/6025E).



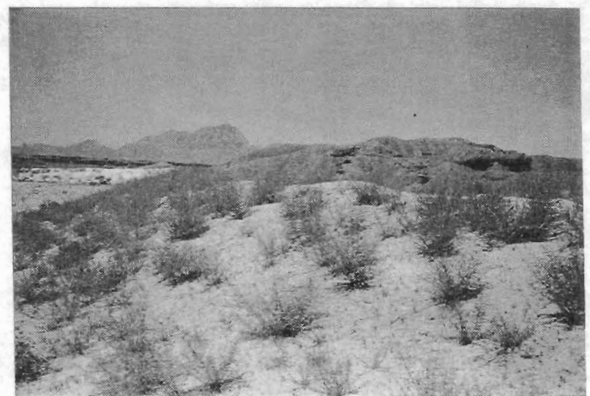
9. Sparse vegetation confined to a small wadi within the high plains of the Suran Valley, I.R. Iran at Nurabad (2723N/6153E).



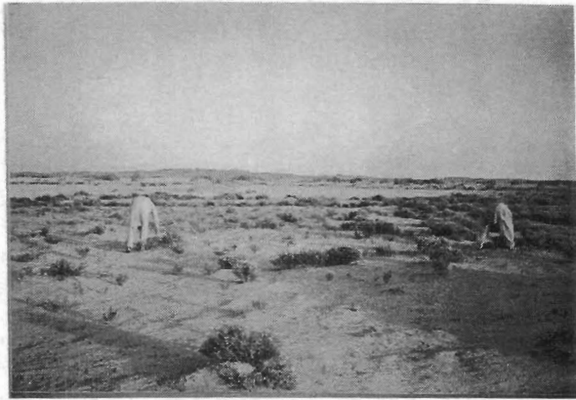
10. Sand dune area in the northern interior of Baluchistan east of Dalbandin, Pakistan extending to the Ras Koh mountains.



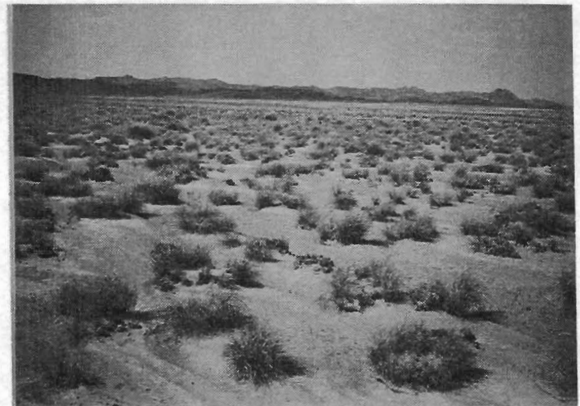
11. Sand and gravel plains in the Pandag area (2859N/6512E) west of Nushki, Pakistan extending to the Ras Koh mountains.



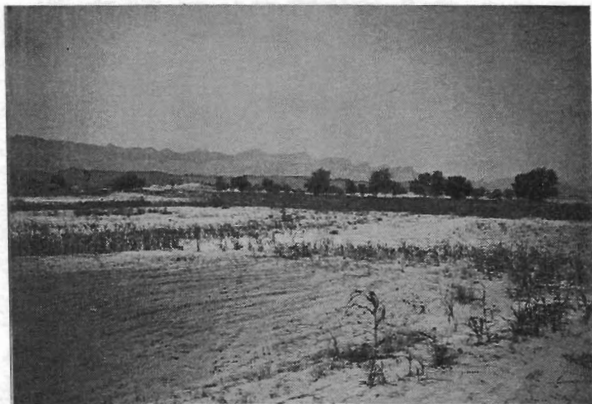
12. Sandy intermountain area between Nushki and Kharan at Riko (2910N/6555E).



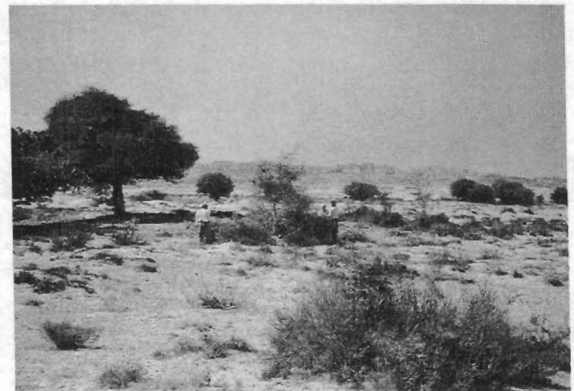
13. Surveying for hoppers in a shallow depression area with flowering shrubs south of Kharan, Pakistan at Bashoor (2827N/6519E).



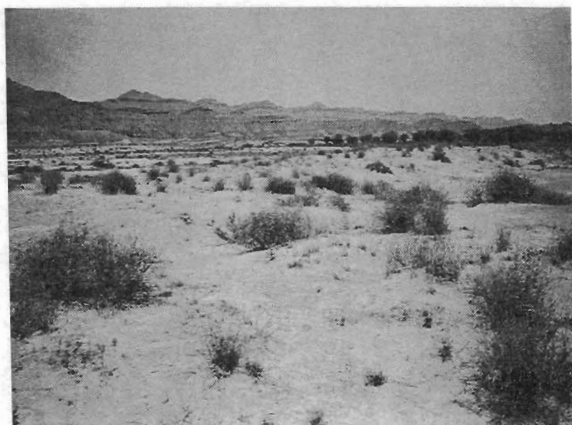
14. The wide plains north-east of Panjgur at Jat (2720N/6452E) extending to the Siahan Range of the Central Makran.



15. Maize crop in the Dasht Valley south of Turbat, Pakistan near Shooli (2534N/6207E).



16. Small patch of vegetation on the coastal plains east of Gwadar, Pakistan at Kapar (2519N/6242E).



17. A potential gregarization site for Desert Locust on the coastal plains west of Pasni, Pakistan at Kandasole (2523N/6300E).



18. The Las Bela Valley between Uthal and Karachi at Wingoa (2538N/6636E).