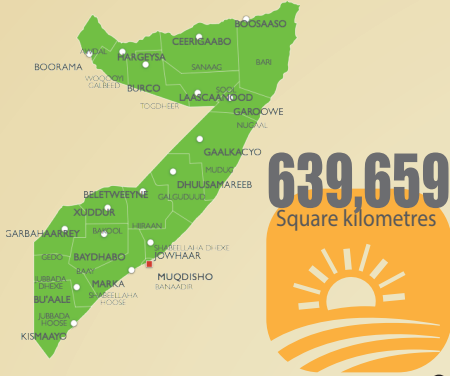


SOMALIA AGRICULTURE

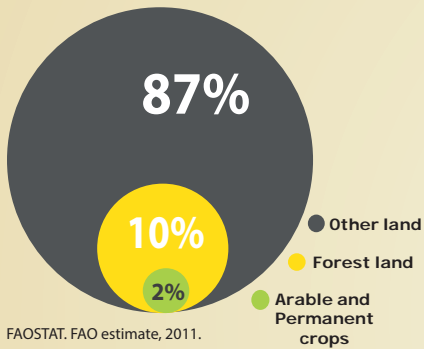


1 SOMALIA SURFACE AREA

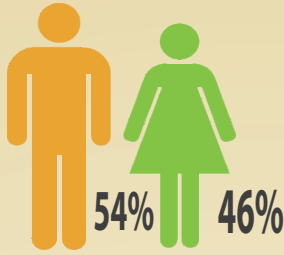
FAOSTAT. FAO estimate, 2011.



2 SOMALIA LAND USE



3 GENDER IN AGRICULTURAL LABOUR FORCE



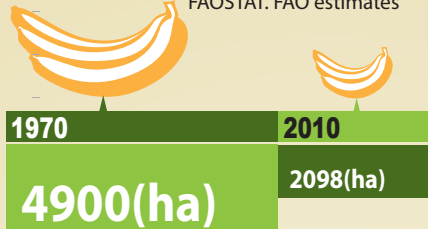
4 CLIMATE IN SOMALIA



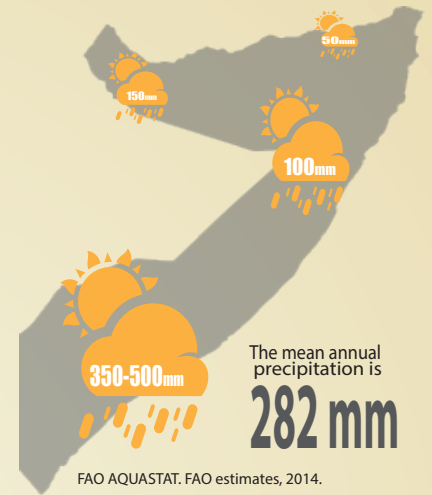
The climate in Somalia is mainly arid to semi-arid, with an average annual daytime temperature of 27°C. It is hot and dry in the interior and on the Gulf of Aden, but cooler on the Indian Ocean coast and inland on the river floodplains.

5 BANANA AREA HARVESTED (HA)

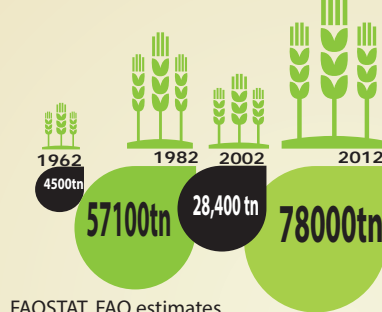
FAOSTAT. FAO estimates



6 RAINFALL DISTRIBUTION

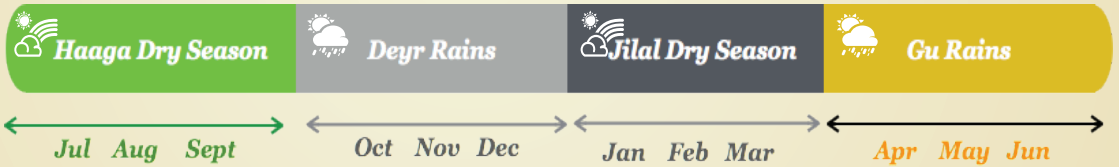
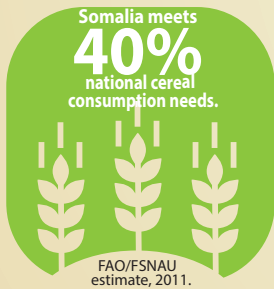


7 SESAME SEED PRODUCTION (tonnes)



8 SOMALIA SEASONAL CALENDAR

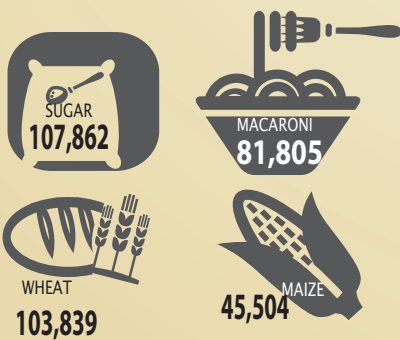
9 DOMESTIC CEREAL PRODUCTION



10 FAO AGRICULTURAL INPUTS & ACTIVITIES



11 TOP FOOD IMPORTS IN 2011 (tonnes)



download

These infographics were developed to convey Somalia's agriculture data drawn from difference sources. More info graphics can be downloaded from www.faosomalia.org. Published June 2014.