



Food and Agriculture  
Organization of the  
United Nations



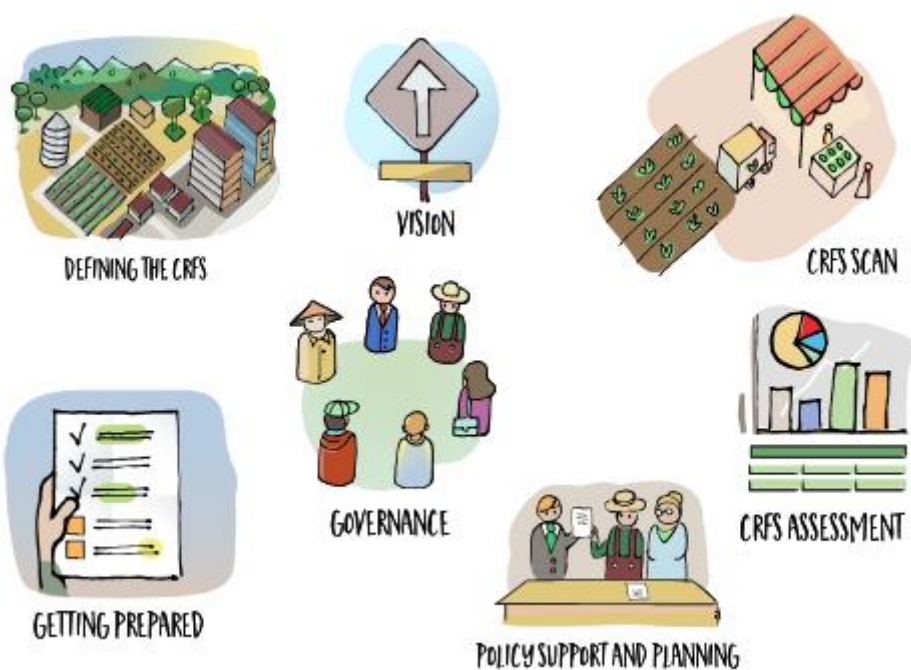
**City Region Food System Toolkit**  
**Assessing and planning sustainable city region food systems**

---

# CITY REGION FOOD SYSTEM TOOLKIT

## TOOL/EXAMPLE

---



Published by the Food and Agriculture Organization of the United Nations  
and  
RUAF Foundation  
and  
Wilfrid Laurier University, Centre for Sustainable Food Systems

May 2018

With support from



by decision of the  
German Bundestag



**fondation**  
**daniel & nina carasso**  
sous l'égide de la Fondation de France



## City Region Food System Toolkit

### Assessing and planning sustainable city region food systems

#### Tool/Example:

#### Medellin Criteria for defining the CRFS

Author(s): Juan Zuluaga, Luca de Paoli and Guido Santini, FAO; Henk Renting, RUAF Foundation;  
Project: FAO Food for the Cities programme

#### Introduction to the joint programme

This tool is part of the City Region Food Systems (CRFS) toolkit to assess and plan sustainable city region food systems. The toolkit has been developed by FAO, RUAF Foundation and Wilfrid Laurier University with the financial support of the German Federal Ministry of Food and Agriculture and the Daniel and Nina Carasso Foundation.

#### Link to programme website and toolbox

<http://www.fao.org/in-action/food-for-cities-programme/overview/what-we-do/en/>

<http://www.fao.org/in-action/food-for-cities-programme/toolkit/introduction/en/>

<http://www.ruaf.org/projects/developing-tools-mapping-and-assessing-sustainable-city-region-food-systems-cityfoodtools>

#### Tool summary:

<b>Brief description</b>	This tool describes the criteria used in Medellín for defining the local CRFS boundaries.
<b>Expected outcome</b>	Definition of the CRFS boundaries for a specific city region
<b>Expected Output</b>	Comparison of different CRFS boundary options
<b>Scale of application</b>	City region
<b>Expertise required for application</b>	Understanding of the local context, existing data availability and administrative boundaries and mandates
<b>Examples of application</b>	Medellín (Colombia)
<b>Year of development</b>	2016
<b>References</b>	-

#### Tool description:

For defining the CRFS boundaries of Medellín (Colombia) and the surrounding Aburrá valley, a specific, localised set of criteria was elaborated that takes into account the importance of smaller municipalities in the province of Antioquia for the Medellín regional food system. The CRFS boundary definition built on the availability of detailed information on food flows in the Antioquia province.

#### Definition and delimitation of the City Region Food System of Medellín

The city region for Medellín is defined as a group of 31 municipalities in the Province of Antioquia, that according to different criteria play a key role in the food provisioning of Medellín City and the surrounding Aburra valley:

- Food provisioning: municipalities contributing more than 1% to food flows reaching wholesale

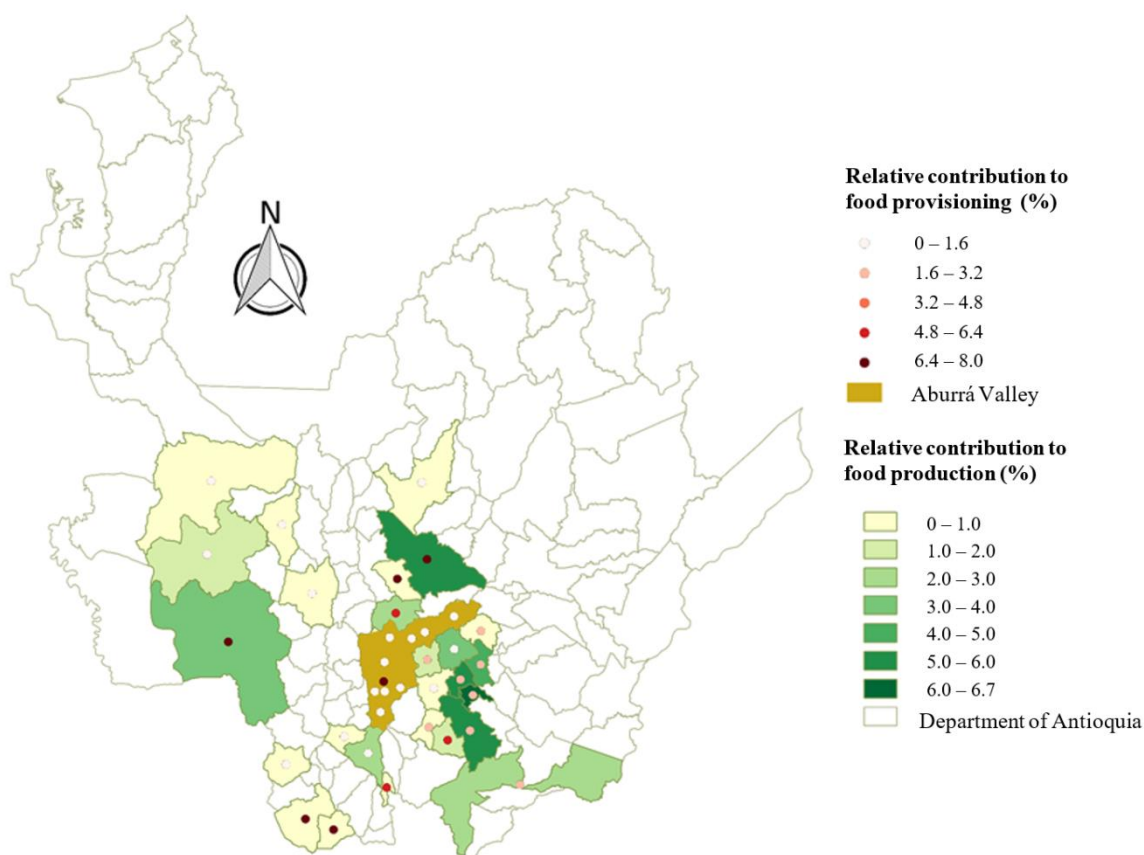


## City Region Food System Toolkit

### Assessing and planning sustainable city region food systems

- markets in Aburra valley;
- ii) Food production: municipalities contributing more than 1% of the total provincial food production;
- iii) Proximity: municipalities in the Aburra valley with any agricultural production;
- iv) Areas of agricultural expansion (this is related to the importance of the western *Occidente* subregion, which is conceived as an area of agricultural expansion within the overall development of the Antioquia department and that is increasingly serving as a foodshed for the growing urban area of the Aburrá Valley. It includes the municipalities with the highest levels of agricultural activity),
- v) Municipalities with an important political role in territorial governance.

**Figure 1. The City region food system of Medellín, Colombia (Source: FAO)**



Overall, the Department of Antioquia contributes nearly 30% of the total food supply of the Aburrá Valley. The 31 municipalities that are part of the City Region Food System of Medellín and the food producing territory, represent an area of approximately 2,550 Km<sup>2</sup> and produce about 70 commodities totaling 670,440 tons in 2013. Figure 2. below indicates the contribution of the 31 individual municipalities (that make up the Medellín CRFS) to the overall food supply.



## City Region Food System Toolkit

### Assessing and planning sustainable city region food systems

**Figure 2. Contribution of local production (per municipality) in Antioquia to food in Medellín**  
(Source: FAO)

