

(1)

1

72 1 200
2000 / 22 90
2001 /
43 18 400 300
88 16
136
1998/1997
51 800 000
44 (

Dr Andrew McGregor (i)

() Mr Sakiusa Tubuna
() Mr Waisiki Gonemaituba
() Ms Joann Young

	250 000	25	50
-			.
)			
(
%70			120
			-
12 000			6
			-
2 000		35)	
		-	
1 800		(
		23)	
14 500		(-
		-	1 600)
:)	(
		800)	
((-
1 000			

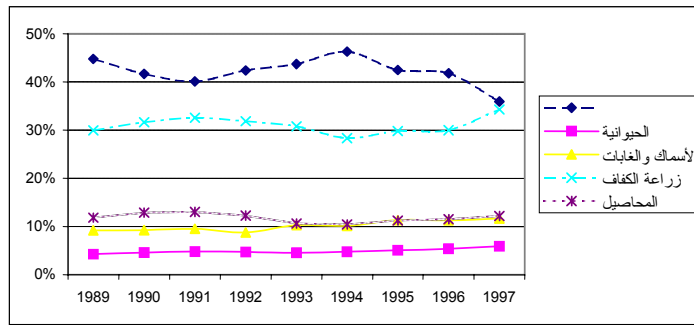
2-1

(1996) " " 40
 (1999))

(1996))
 () 40
 .1

- 1

()



()

3-1

1970

()

()

1989

34

()))

1996

1999 :

()

•

•

•

" "

.2000 1,71

1999 /

2000 /

.2001 /

2001 "

" "

" " " " 25 "

" "

4-1

1981

150

1998

50

1996

.2007

2000

2007

174 000

)

.(90

1993 /

.1996 /

1996

2

1-2

1989

) 34

46 - 60 40 1996

.(2005

1994

10 40

10

1999

.() 27

) 1999

1992 .(27 10 3

10

1998

27 35

	2002	15	27	27	10
2					
	(%)			- 2	

27	27	27			02
27	27	27			03
27	0	9,97			04
27	3	3,69			07
3	3	3			08
10	3	4,6			09
10	0	3,5			10
15	3	3,69			11
3	3	3			12
20	0	9,85			15
27	27	27			17
10	0	6			18

2000

1 600

1995

.(" 4 2)

2-2

)
(10

.1992
(Kunatuba, 1998, p. 4)

" " " " "

1997

" " " "

43

1998

23,7

30

(4) (3)

-
-

1996

2000 /

2001

1999 /

1996

...

(21)

1997

(23 2000

).

(Kunatuba, 1998, p. 9) .

5-2

)
(

..(10)**

6-2

30

.2000

: *Fiji Times*

.2000 /

..(2002 / 25 *Fiji Times*)

* لم يكن لفيجي ممثل دائم في جنيف في ذلك الوقت.

– (*Morinda citrifolia*) – (*Piper methysticum*)

“(Kunatuba, 1999, p. 10)”

3

1-3

.2000-1985

3

2000-1985

– 3

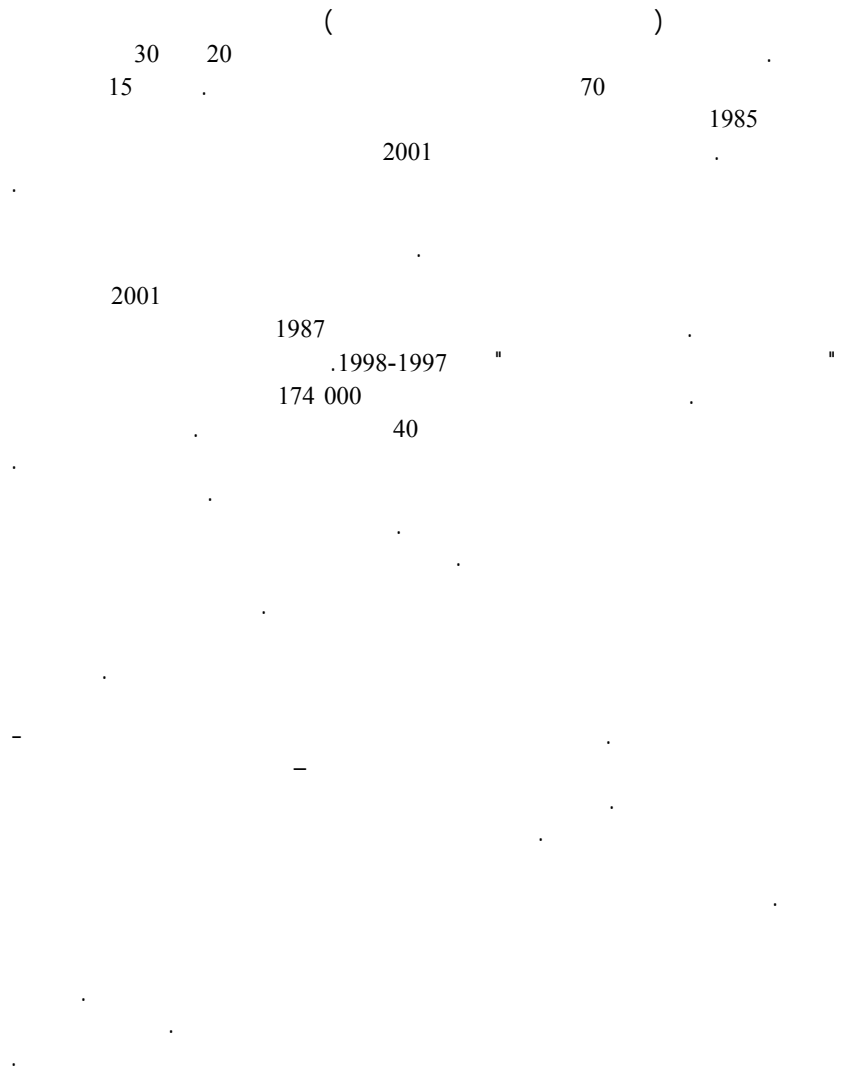
		2000-1995	1994-1990	1989-1985	
() / ()	() / ()	()	()	()	
0,98	1,13	148,5	151,6	133,9	()
0,88	1,02	360	405	394	()
1,10	1,10	412,51	374,23	339,84	(/)
1,15	1,03	8,6	7,5	7,2	()
1,11	0,95	142	127	133	()
1,02	1,08	60,35	58,66	54,08	(/)

		2000-1995	1994-1990	1989-1985	
() / ()	() / ()	()	()	()	()
0,44	1,15	10,1	23,0	19,9	()
0,74	1,22	4,9	6,5	5,3	()
0,58	0,94	2 070	3 510	3 730	(/)
2,05	2,49	16,3	7,9	3,2	()
1,48	0,67	3,6	2,4	3,6	()
0,86	0,74	5,5	6,4	8,6	()
1,71	0,90	650	380	420	(/)
2,06	0,71	5,6	2,7	3,8	()
1,09	0,53	6,1	5,7	10,7	()
1,89	1,34	898	476	355	(/)
0,88	0,94	2,9	3,3	3,5	()
0,53	1,03	1,6	3,0	2,9	()
1,65	0,91	1 810	1 100	1 206	(/)
3,17	n.a.	5,4	1,7		()
2,66	n.a.	0,8	0,3		()
1,18	n.a.	6 750	5 700	-	(/)
-	-	0,25	0	0,10	()
-	-	0,12	0	0,13	()
-	-	2 005	0	792	(/)
-	-	0,15	0	n.a.	()
-	-	0,16	0	n.a.	()
-	-	949	0	n.a.	(/)
1,01	1,14	201,4	200,1	175,2	()

:n.a.

:

(Natures Way Cooperative (Fiji) Ltd)



.1995

.1990 400

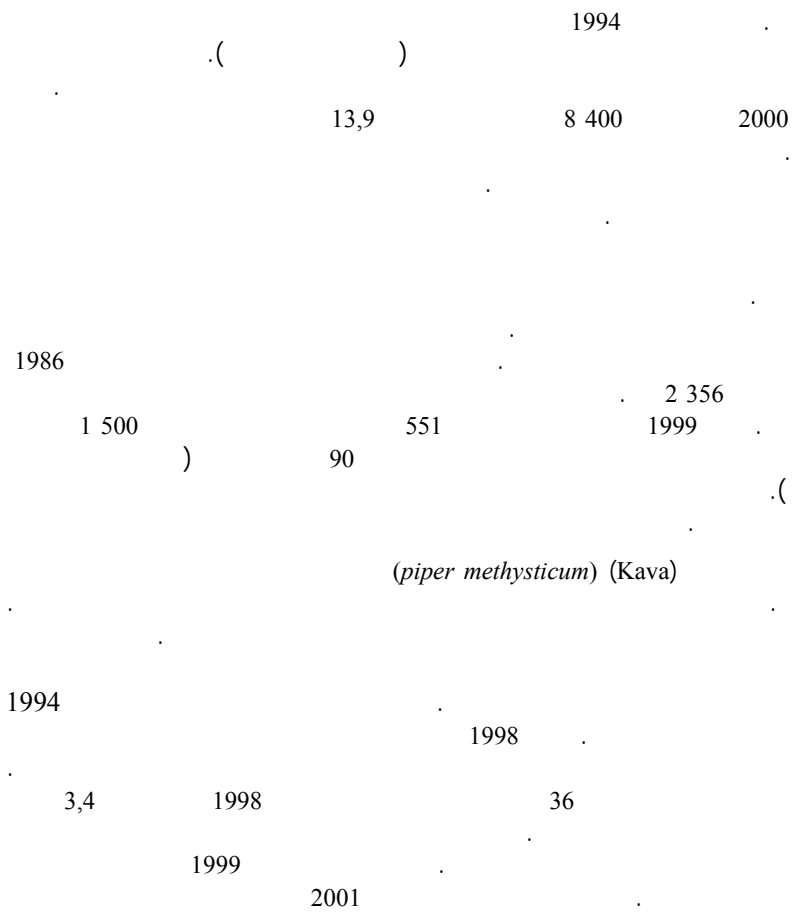
1993

()

24

Grynberg and White (1998)

.(68)



2000

)

1 500

)

1996

.(

.(

)

1 000

(

					2-3
2	2000-1988			4	
(FAO, 1999, p.				39	1994
	15)			.6)
			.(1996-1994	10	
26	1996-1994				
		.(Sharma, 1999, p. 11)		24	

2000-1988

- 4

2000-1996	1995-1991	1990-1988		
200,8	158,5	126,0	()
1 554,8	1 113,2	877,4	()
341,3	332,8	279,7	()
917,1	n.a.	n.a.	()
16,7	12,3	9,1	()
250,0	230,0	n.a.	()
13,2	14,2	14,7		
55,8	47,8	45,3		
22,0	n.a.	n.a.		

:n.a.

()

:()

60 40
)
 20 ()
 .(Sharma, 1999, p. 11)
 1999 1998
 .(5) 2000-1993
 .1999-1996
 2000
 2000-1993
 - 5

2000	1999	1998	1997	1996	1995	1994	1993	
220,7	189,3	204,3	194,6	195,0	182,3	165,9	166,9	()
119,6	118,3	116,0	109,7	106,1	103,0	100,8	100	100=1993
115,0	118,8	116,7	108,4	103,5	101,2	100,5	100	100=1993
191,9	159,3	175,1	179,5	188,4	180,1	165,1	166,9	

59
 .(FAO 1999, p. 10) 1966-1964
 37
 1995-1993

1989						
	(6)			66	
	2000-1980				- 6	
	()	()	()	()		
51,1	45 132,2	21 855,2	23 277	10 795,7	n.a.	1989-1980
45	55 956	32 296	23 659	10 443	11 894	1994-1990
37	40 387	25 151	15 232	7 567	6 648	2000-1995

:n.a.

Prasad 1996 :

1990
1992
1994
63 000

1990

.2000

.(Prasad, 1997, p. 24)

1993

	2000		1998 (7)
			1992
35		.1994	-
	.1995	5 000	1994
			3 400 1997 1996
	2000-1980		- 7

	() () () () (
19,8	2 851	2 311,6	539,4	204,2	1989-1980
35	4 398	2 870	1 528	509	1994-1990
21	4 961	3 799	1 055	293	2000-1995

Sugrim 1998 :

5
(8)

2002

27

1989
) 10 75

				4
	2 259	1995		
(FAO, 1999, p. 7) 1965				4
3 005		2 632		
		14		-
		50		
		18		
		10		
	()		•
				•
				•
				•
			9	
			- 9	

" " 40

25 1996

: 1999

.1998-1997

()

(1997)

40

•

•

20

•

•

60

1988

:

(Mataitoga, 2001, p. 3) .

.

: 1999

(1999

)

Raghavan
2000 /

[.\(www.twinside.org.sg/title/market.htm\)](http://www.twinside.org.sg/title/market.htm)

20

(Mataitoga, 2000, p. 5)

Chaudhary
"

" "

(3) .

" "

(Mathur, 2002, p. 54)

:

(4) .

"

"

(Swinbank *et al.*, 1998, p. 32)

1998 1997

4

2001

(4).

4

(4).

- Asian Development Bank. 1985. *Fiji agricultural sector study: A program for crop intensification*.
- Asian Development Bank. 1996. *Fiji agricultural sector review: A strategy for growth and diversification, Pacific Studies Series*.
- Asian Development Bank. 2000. *Republic of Fiji islands 1999 economic report*.
- FAO, 1999. *Nutritional country profile of Fiji islands*.
- Fiji Floriculture Council. 2000. *The strategic plan of the Fiji floriculture council*. January.
- Fiji Islands Ministry of Foreign Affairs and External Trade. 1999. *Minister's Brief: Cairns Group Ministerial Conference, Buenos Aires, August 1999*.
- Grynberg, R. & White, M. 1998. EU tuna preferences in the post-Lomé environment. In Grynberg, R., ed. *The Lomé Convention and the Pacific*. Forum Secretariat and University of the South Pacific.
- Kunatuba, P. 1998. *Fiji country paper to the FAO Round Table on the Uruguay Round Agreements: Implications for agriculture and fisheries in Pacific island countries*. Auckland.
- Mataitoga, I. 2001. *Republic of the Fiji islands statement, Ambassador, Permanent Representative to WTO*. Ministerial Conference, Fourth Session, Doha, 9–13 November 2001.
- Mataitoga, I. 2000. *Post Seattle negotiations under WTO Agreement on Agriculture – Special sessions on the Committee on Agriculture (working paper)*.
- Mathur, S. 2002. *Notes on the Agreement on Agriculture. Third WTO/Forum Secretariat Trade Policy Course for Pacific Island Countries*. Forum Secretariat, Suva. March.
- Prasad, K.D. 1996. *Deregulation of the rice industry in Fiji, an assessment of macro and micro effects*. Unpublished, University of the South Pacific MA thesis, Suva, Fiji.
- Sharma, R. 1999. *Overview of global market developments in the post-Uruguay Round period. FAO Round Table on the Uruguay Round Agreements: Implications for agriculture and fisheries in Pacific island countries*. Auckland.

Sugrim, A. 1998. *Overview of Fiji's dairy industry: A paper presented at the South Pacific Regional Training Workshop on Milk Production and Processing in Fiji-Tonga-Samoa.*

Swinbank, A., Jordan, K. & Beard, N. 1997. *Implications for developing countries of likely reforms on the Common Agricultural Policy of the EU.* Report prepared for the Economic Affairs Division of the Commonwealth Secretariat and published in the ISO Sugar Year Book.

