



## **Agricultural Commodity Price Bulletin**

**Ministry of Agriculture and Food  
Planning Department  
Marketing, Economics and Statistics Division  
(FAAHM)  
Kabul, 4 March 2006**

## **Abbreviations**

DAP	Diammonium Phosphate
FAAHM	Food, Agriculture and Animal Husbandry Information Management Unit
FAO	Food and Agriculture Organization of the United Nations
MAF	Ministry of Agriculture and Food
WFP	World Food Program

### **Contact us**

Comments on this bulletin are most welcome. Contact us at:

Haqiqatpal Ghulam Rabbani, Director, FAAHM, MAF  
[GhulamRabbani.haqiqatpal@fao.org](mailto:GhulamRabbani.haqiqatpal@fao.org)

Mobile: +93-(0)70-284879



The FAO project “Support to FAAHM in the MAF” (GCP/AFG/034/GER) provided technical guidance and financial support for the publication of this bulletin. The project is funded by the Government of Germany.

Earlier volumes of the bulletin are available at: [www.fao.org/es/esa/](http://www.fao.org/es/esa/)

## Afghanistan Map with Provincial Boundaries



Source: Afghanistan Information Management Service (AIMS)

## Contents

1.	Consumer Price Index .....	1
2.	Prices of various agricultural commodities.....	4
2.1.	<i>Wheat price</i> .....	4
2.2.	<i>Livestock and livestock products prices</i> .....	5
2.3.	<i>Labor costs</i> .....	8
2.4.	<i>Fertilizer prices</i> .....	10
<i>Annex I:</i>	<i>National Consumer Price Index (CPI), February 2005-January 2006(Source: CSO)</i>	
<i>Annex II:</i>	<i>Kabul Consumer Price Index (CPI), February 2005-January 2006 (Source: CSO)</i>	
<i>Annex III:</i>	<i>Monthly prices of 33 agricultural commodities, February2006 (Source: FAAHM)</i>	
<i>Annex IV:</i>	<i>Weekly prices of six commodities, December 2005 to February 2006 (Source: WFP)</i>	

**Ministry of Agriculture and Food (MAF)**  
**Planning Department**  
**Marketing, Economics and Statistics Division (FAAHM)**

**Agricultural Commodity Price Bulletin**  
**(Year 2: Volume 3)**

**1. Consumer Price Index**

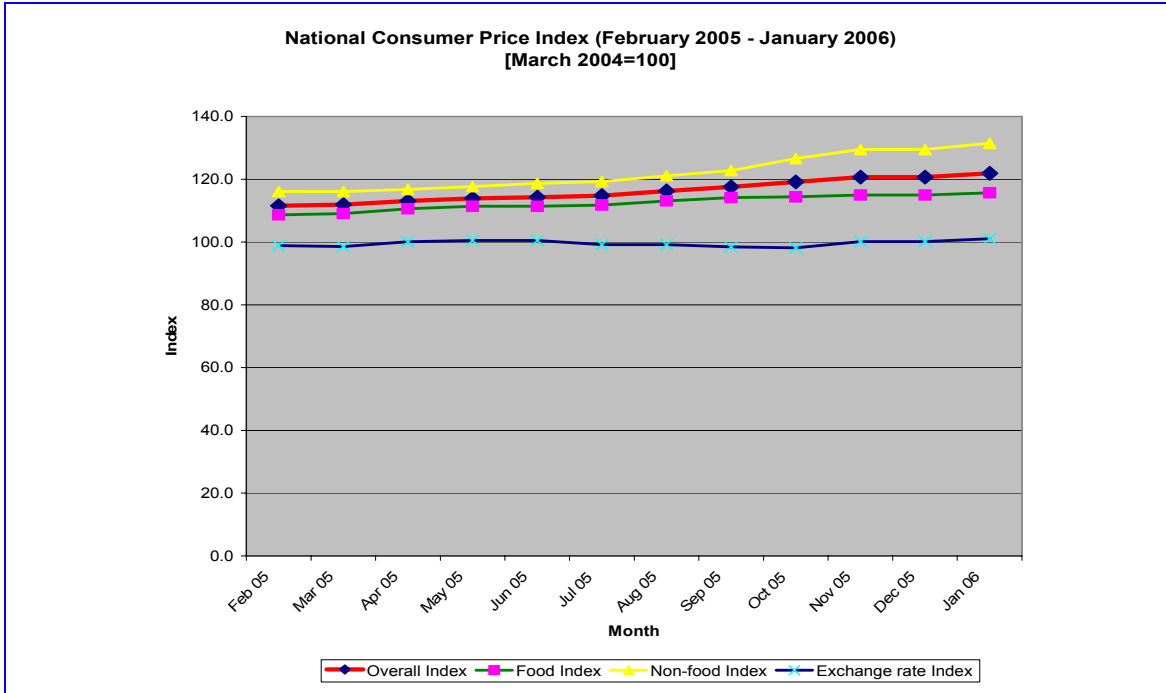
National Consumer Price Index<sup>1</sup> (CPI) rose by 11.5 percent points in the last one year period.<sup>2</sup> The annual increases in the national food and non-food indexes were 9.0 and 15.5 percent points, respectively. The increase in the exchange-rate index was only 1.4 percent-point in the period. The “Overall Index” rose by 1.2 percent points in one month (December 2005 to January 2006), with increases in the food and non-food indexes by 0.7 and 2.0 percent points respectively.

**Table 1: Annual and monthly percent points increases in CPI**

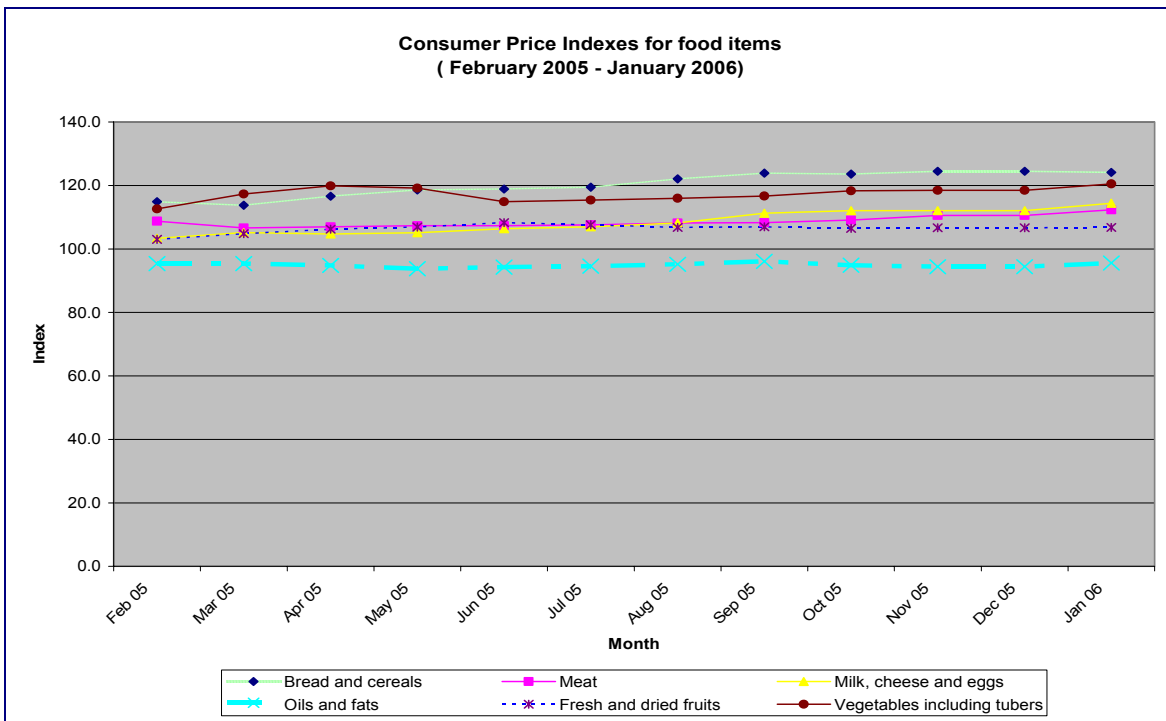
Description	Percent points increase in CPI in	
	One year (January 2006 index compared to February 2005)	One month (January 2006 index compared to December 2005)
<b>OVERALL INDEX</b>	<b>11.5</b>	<b>1.2</b>
Food Index	9.0	0.7
Bread and cereals	12.7	-0.4
Meat	5.5	1.7
Milk, cheese and eggs	9.9	2.3
Oils and fats	-0.4	1.2
Fresh and dried fruits	5.3	0.1
Vegetables including tubers	9.8	2.0
Sugar and sweets	15.5	5.1
Spices	12.4	1.4
Non-alcoholic beverages	2.4	-0.4
Cigarettes and tobacco	3.3	1.2
Non-food Index	15.5	2.0
Exchange rate Index	1.4	0.9

<sup>1</sup>Consumer Price Index (CPI) is an index of the prices of consumer goods and services purchased by the consumers. It is used to measure the rate of inflation or the cost of living.

<sup>2</sup> Source: Central Statistics Office (CSO)

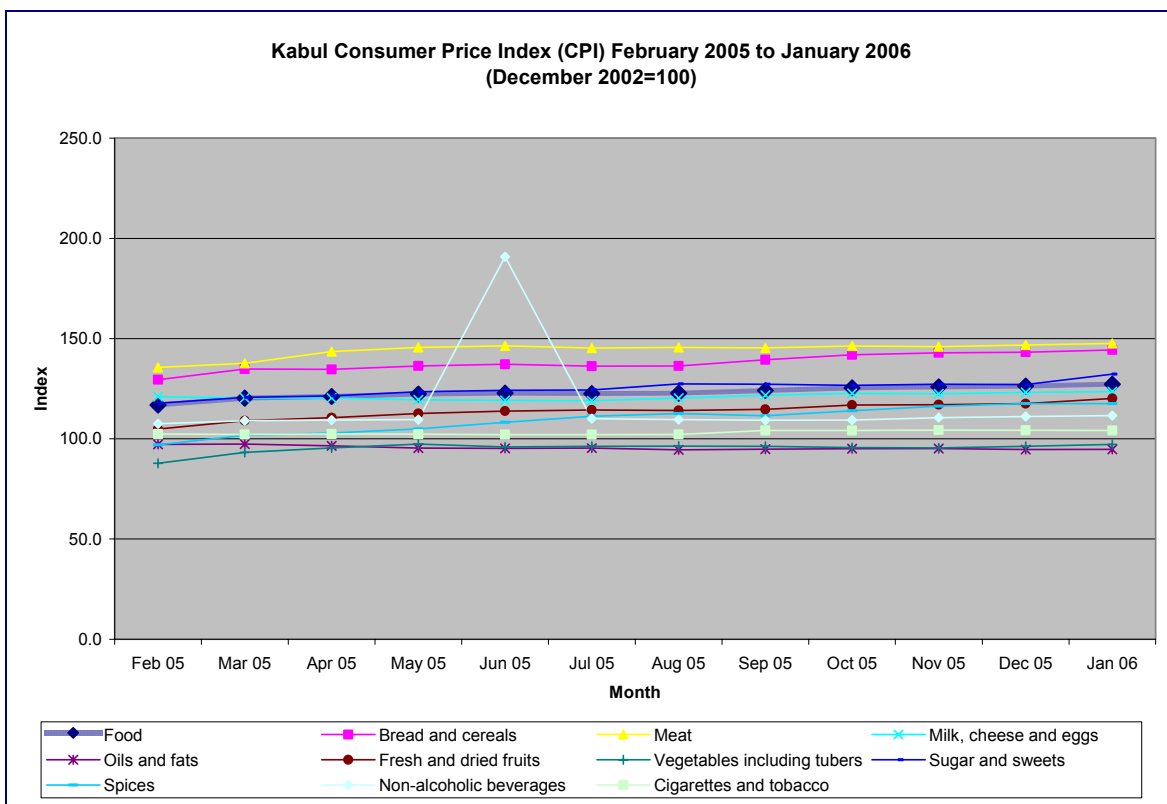


In the one-year reference period, “bread and cereals” consumption index showed an increase of 12.7 percent points. The annual increases were substantial in the cases of “sugar and sweets” (index up by 15.5 percent points) and “vegetables and tubers” (index up by about 9.8 percent points).



The index increases were 5.5 percent points in the cases of meat and 10 percent point in the case of “milk, cheese and egg”. “Fresh and dry fruits” exhibited a slightly increasing price trend (index up by 5.3 percent points), whilst the index prices of “oil and fats” decreased slightly (down by 0.6 percent points).

In the last year, Kabul CPI increased by 14.2 percent points. This was caused by the increases in the consumer prices of non-food items and food items by 20 and 10.4 percent points, respectively. For Kabul the annual price increase was substantial in the case of spices (index up by almost 21 percent-points). The increase in the index prices of meat in the one-year period was 12 percent point. The index prices of fresh and dry fruits as well as sugar and sweets increased by 15.3 percent points. The prices of oil and fats slightly decreased. (Graph below)



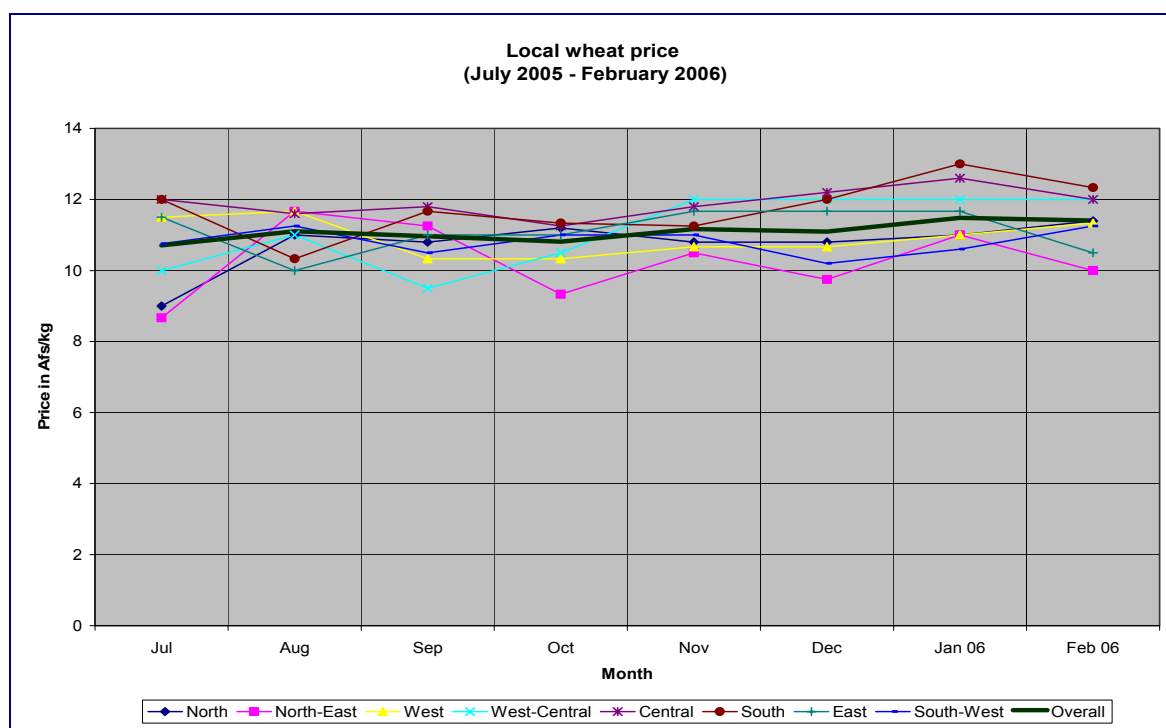
## 2. Prices of various agricultural commodities

### 2.1. Wheat price

In February 2006 the overall average price of local wheat was Afs 11.4/kg, which is slightly lower than the 2005 January price.

**Table 2: Average price of local wheat in various regions (Afs/kg)**

Region	December 2005	January 2006	February 2006	% change compared to the last month
North	10.8	11.0	11.4	3.5
North-East	9.8	11.0	10.0	-10.0
West	10.7	11.0	11.3	2.9
West-Central	12.0	12.0	12.0	--
Central	12.2	12.6	12.0	-5.0
South	12.0	13.0	12.3	-5.4
East	11.7	11.7	10.5	-11.1
South-West	10.2	10.6	11.3	5.8
<b>Overall</b>	<b>11.1</b>	<b>11.5</b>	<b>11.4</b>	<b>-0.7</b>

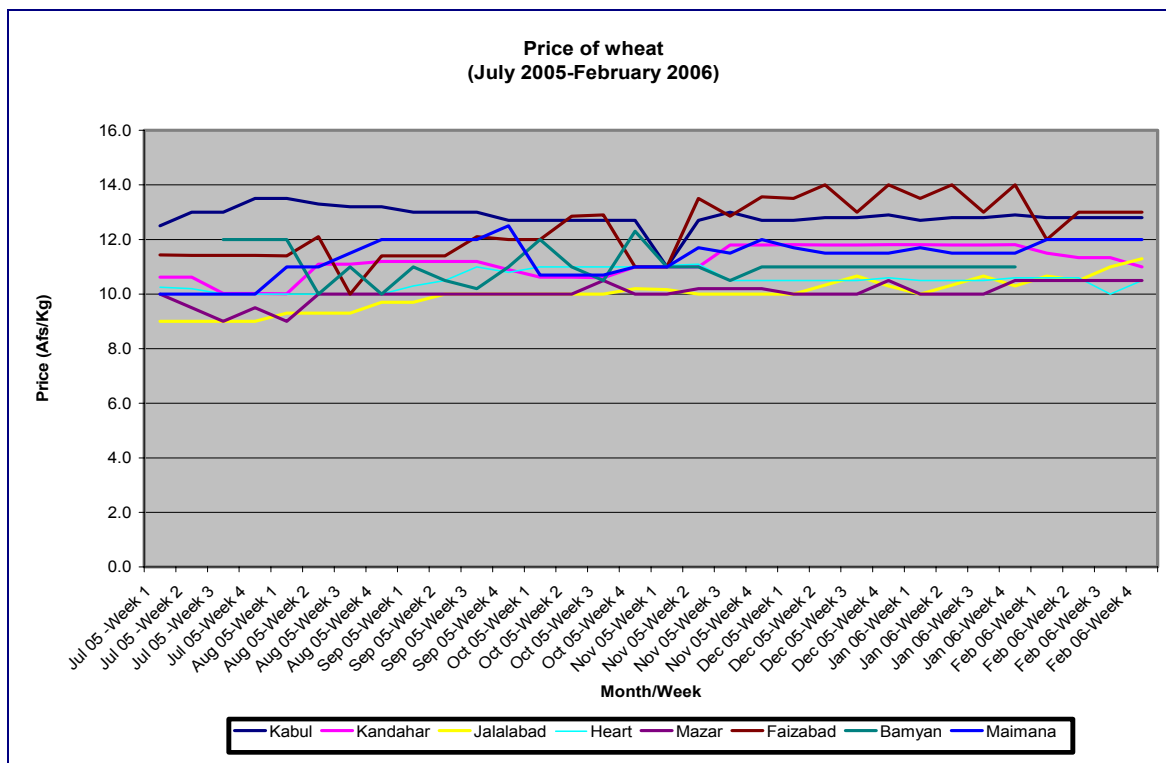


The price of local wheat was slightly above Afs 11/kg in January-March 2005. The price showed a slightly increasing tendency up to mid-May. Thereafter, the price moderately



decreased up to June, which can be satisfactorily explained by the bumper harvest prospects of 2005. A price stabilization tendency was seen from June/July. The price variations across provinces considerably narrowed in December 2005 rallied up to February 2006. The price of wheat in urban places has been stable after the harvest. This shows that the local grain markets have performed well so far. Generally speaking the price in February is generally lower than in or at par with January.<sup>3</sup>

Weekly wheat prices for July 2005-February 2006 in the eight markets reported by WFP are presented below.



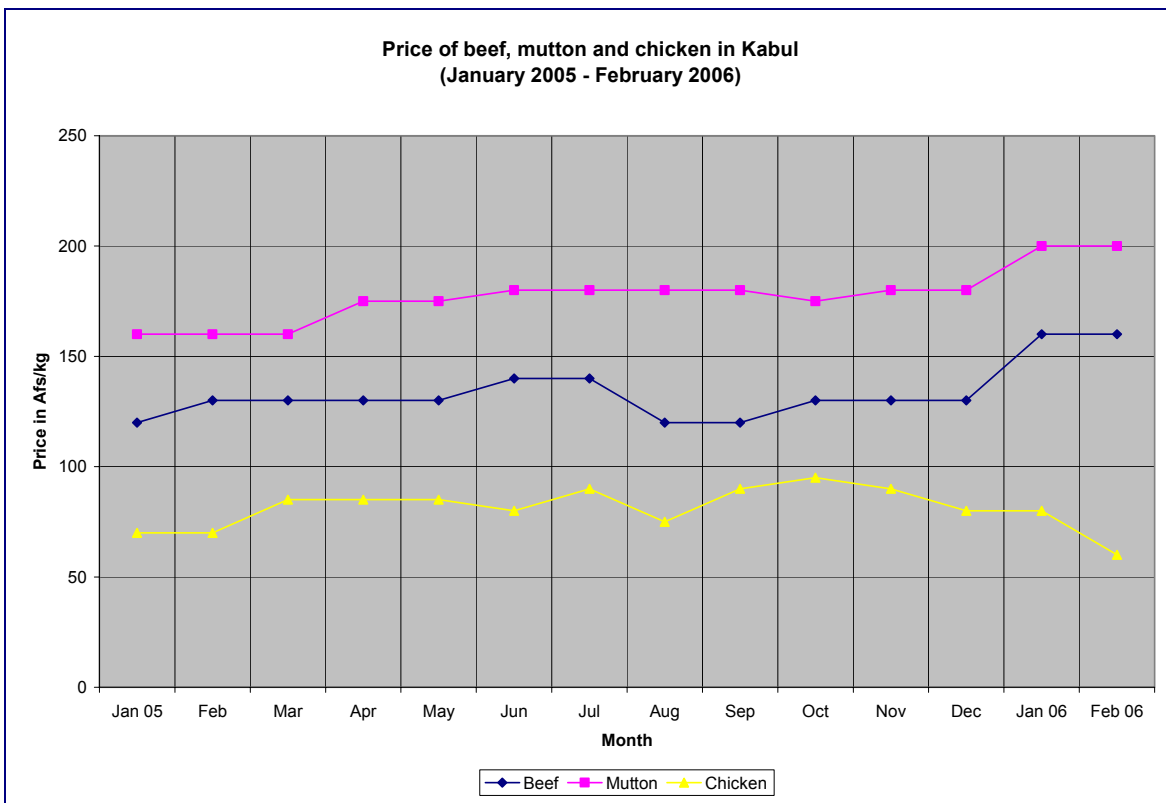
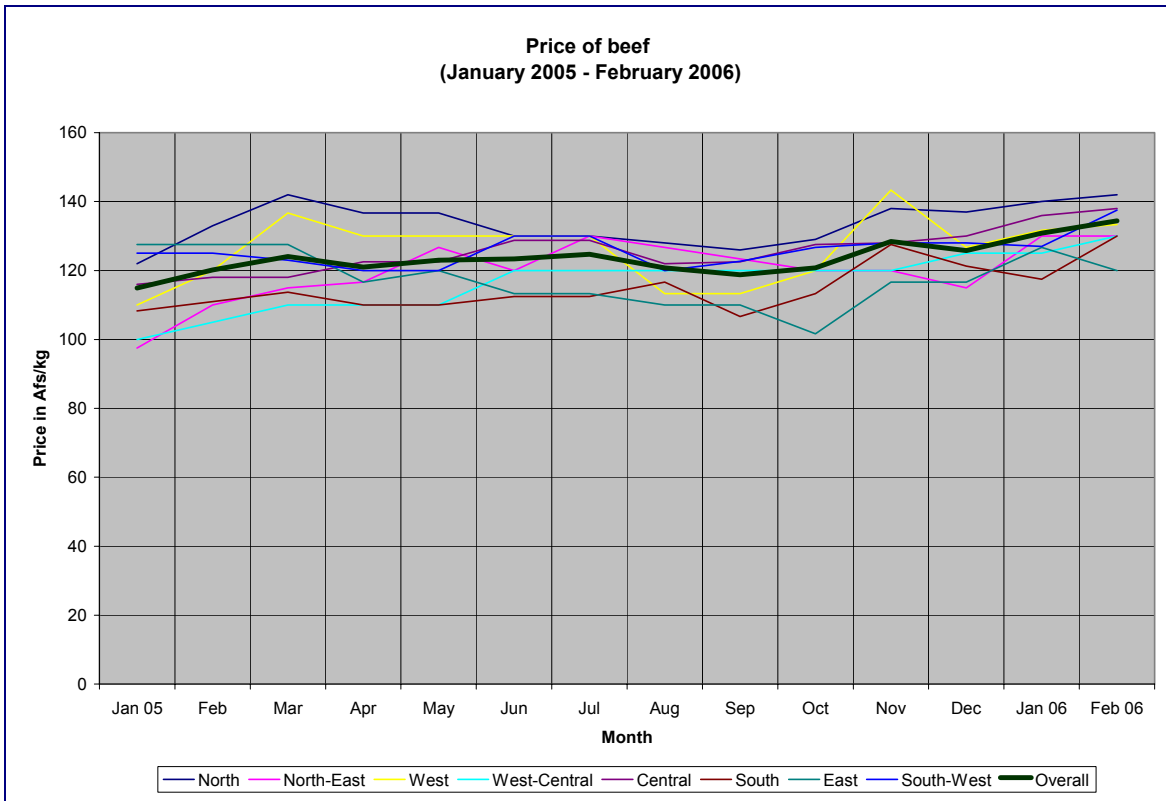
## 2.2. Livestock and livestock products prices

The average prices of beef and mutton in January 2006 were Af\$ 134/kg and 177/kg, respectively. In February 2006 the prices of beef and mutton are slightly higher than the respective prices in January 2006.

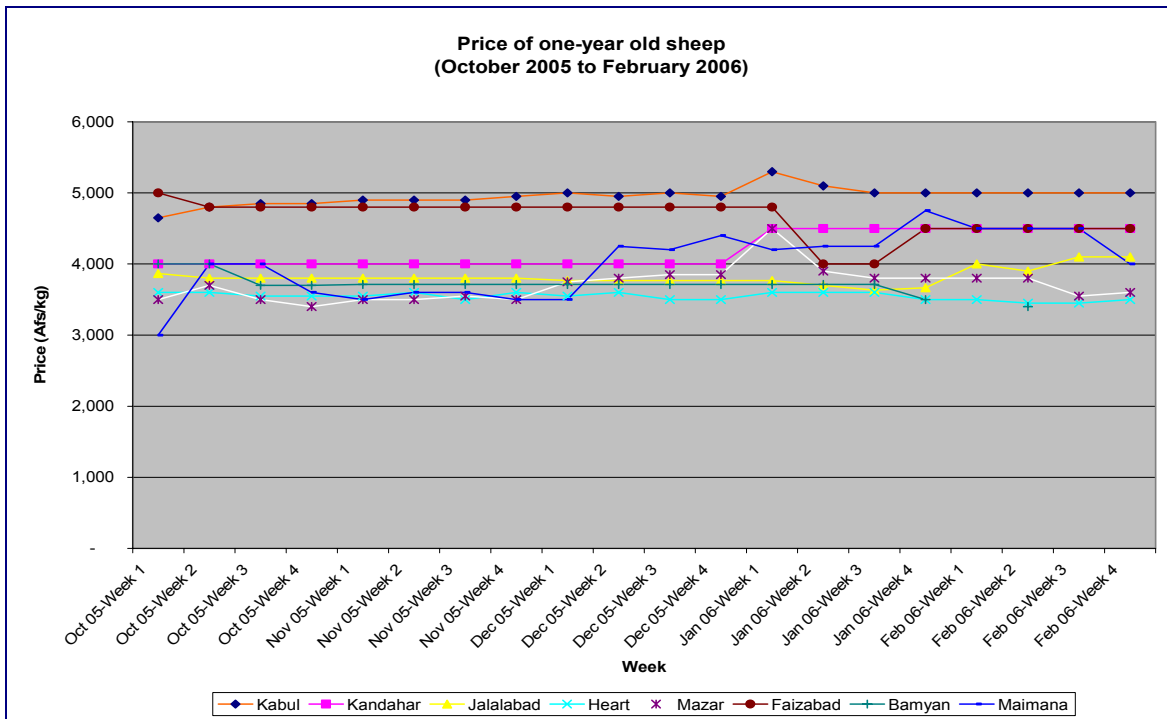
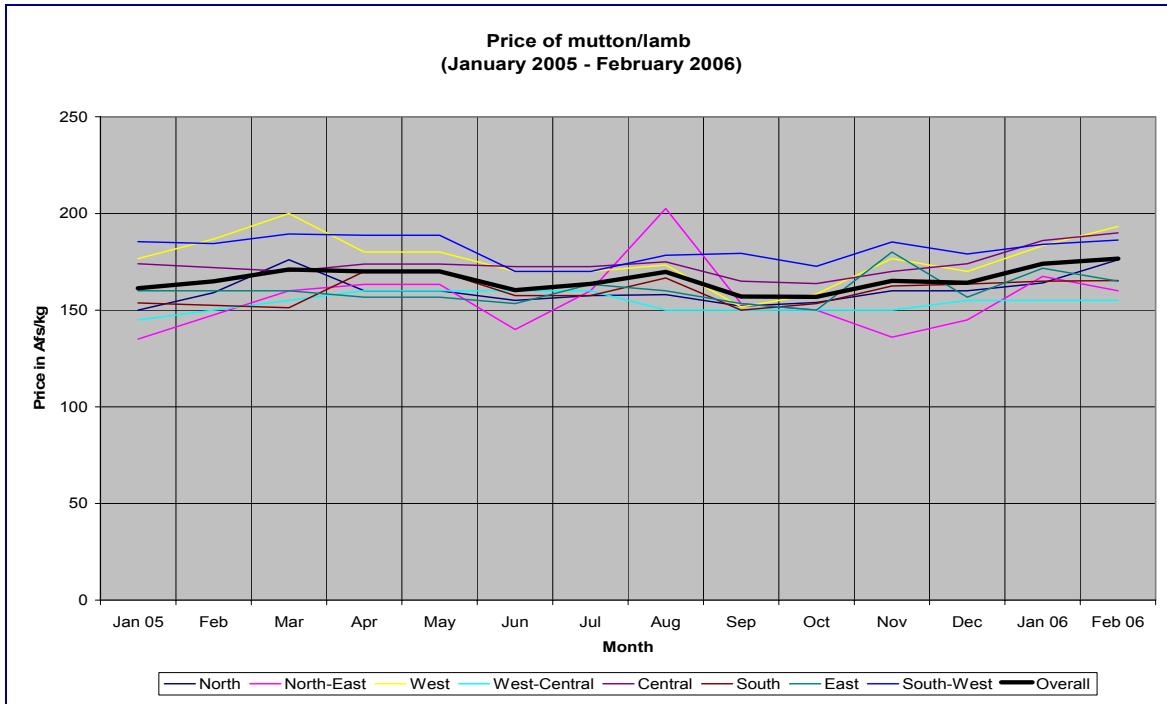
**Table 3: Average prices of beef and mutton**

Region	January 2006	February 2006	Approx. % increase/Decrease
Beef	130.9	134.4	3
Mutton	173.9	176.7	2

<sup>3</sup> Source: FAAHM

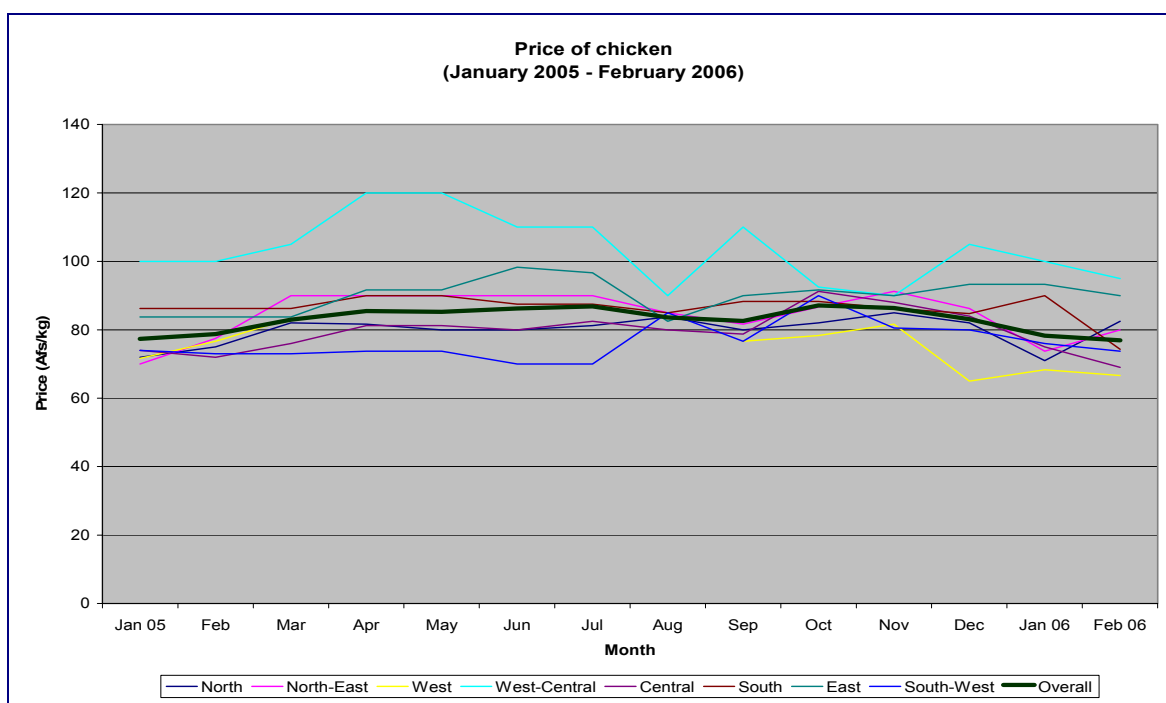


There was a slight increase in the price of mutton from January to March 2005. Thereafter, decrease or at par price was observed up to June/July. This was followed by a slightly upward price movement before reaching or off-setting the January 2004 level in November and/or December 2005. Like beef, a steady increase in price of mutton was observed since January, which is a normal phenomenon because of the highest demand for this commodity in the month.



No abnormal changes in the price of one-year sheep have been observed in the recent months. In February 2006 average price of a one-year sheep ranged between Afs 3,400 to 5,000 in most of the eight reporting locations<sup>4</sup>. In earlier months of 2005 sheep were cheapest in the north, but the seasonal price variations in these areas were significantly higher. Thereafter, the price of sheep exhibited a consistent seasonal price movement up to May in all areas. The price was moderately higher in January to May 2005. In the East and West-Central regions, there was a decrease in the price from June to August, before the price in September became higher than in August. In other areas, the price rose higher from June to August, with a mixed trend in September.

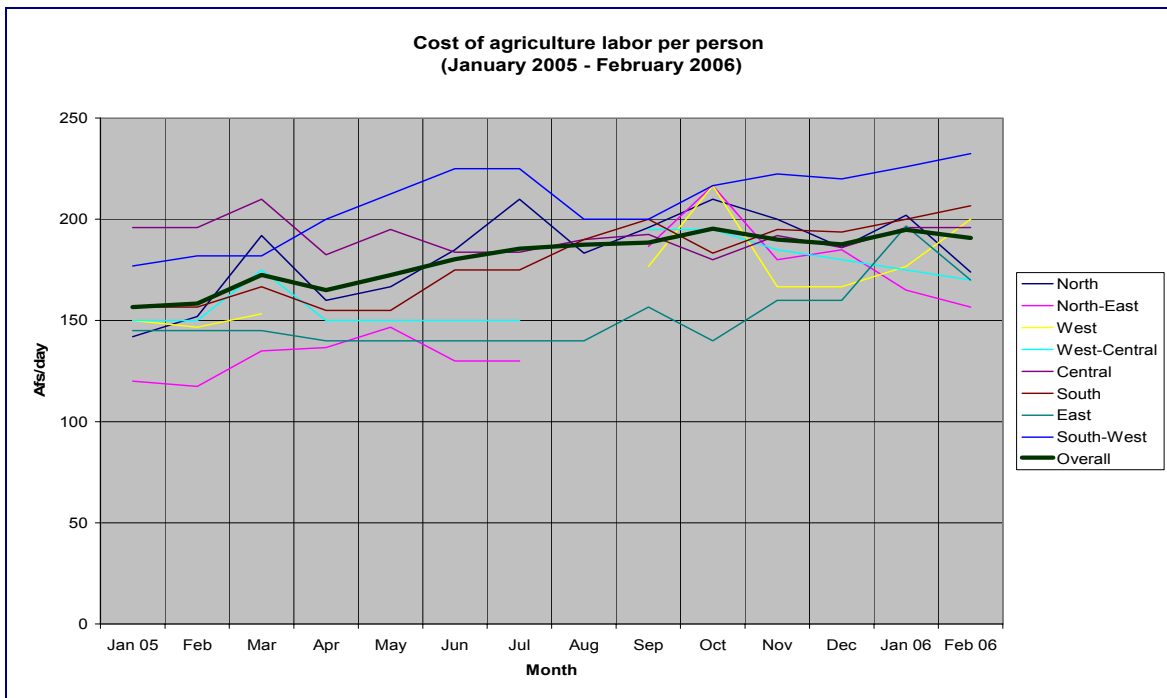
The price of chicken shows a decreasing trend in recent months (October to February). In February 2006 the price of chicken was Afs 77/kg, on average. Overall, compared to the 2005 December price, the price of chicken in January 2006 was lower by 5.8%. This decrease can be satisfactorily attributed to lower demand for chicken and the resulting substitution effect, which are reflected in the degree of increases in the prices of beef and mutton in the latest month. However, the chicken prices in January and February 2006 were comparable to their respective prices in January and February 2005. (Graph below)



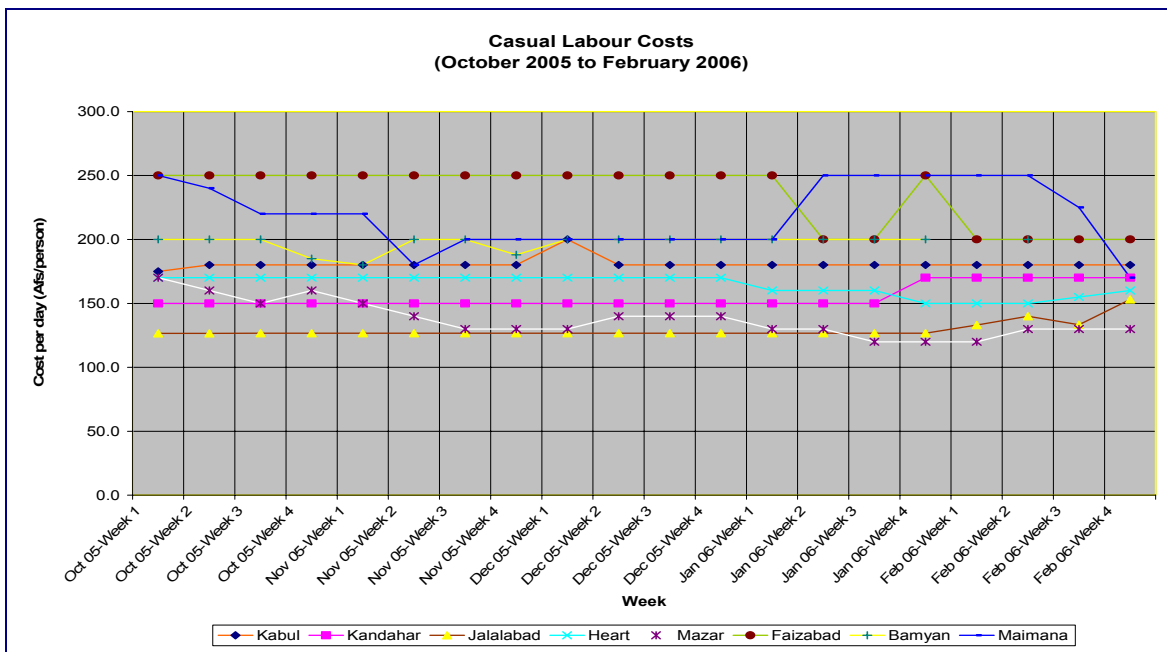
### 2.3. Labor costs

The peak demands for agricultural labor are in June/July and in October to January, when the main farm operations are carried-out. Average agriculture labor cost was around 190 Afs/person/day in February 2006. The cost shows a large variation across provinces and between seasons.

<sup>4</sup> Source: WFP



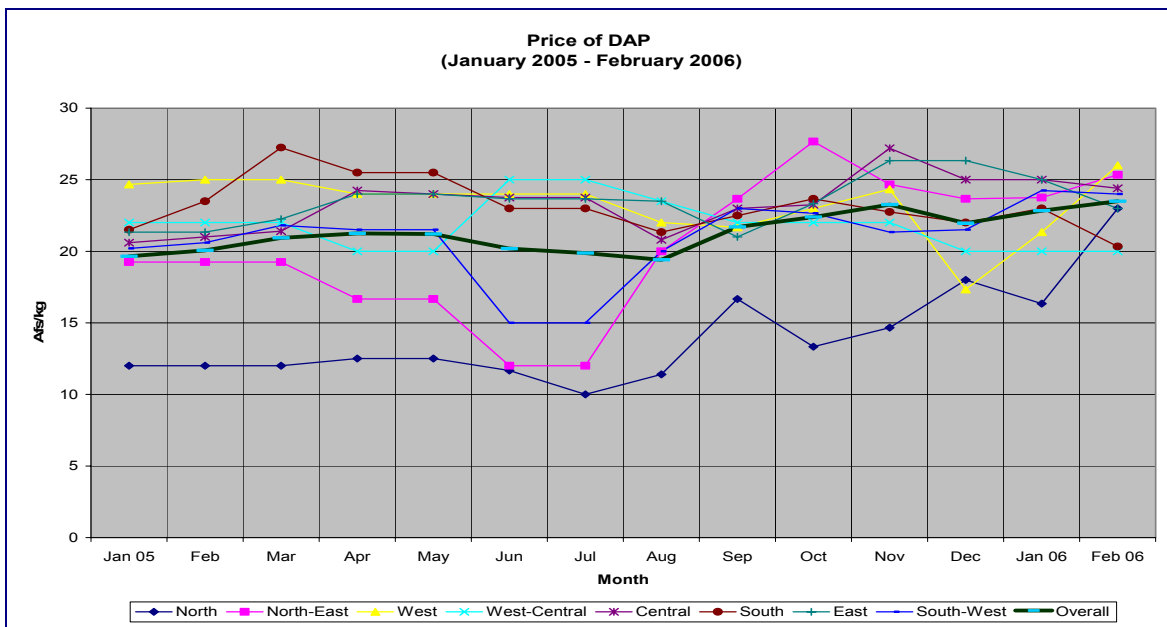
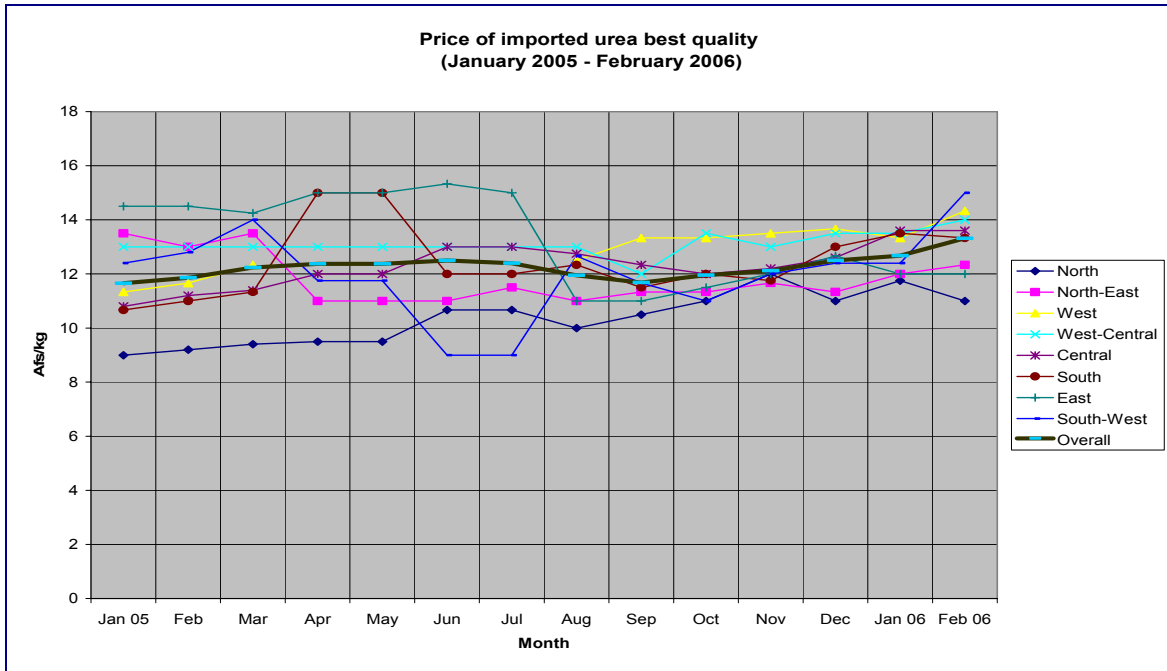
The cost of casual labor<sup>5</sup> ranged between 120-250 Afs/day in February 2006. The labor costs do not show much seasonal variations and are comparatively lower in Jalalabad (East), Kandahar (South-west) and Herat (West). North and North-East are unstable market for casual labor. The labor costs are stable, especially in Central, East, South-west, West-Central (partly) and West. (Annex IV)



<sup>5</sup> Source: WFP

## 2.4. Fertilizer prices<sup>6</sup>

The average price of best quality, imported urea was Afs 13.3/kg (US\$266/tonne) in February 2006. Urea price was stable after April 2005 in the West-Central region, north and north-east and east. The Central parts experienced slight rise in the price from May to July. From August the price shows generally increasing trend across regions.



<sup>6</sup> The price per bag expressed in Afs/kg

In January to August 2005, spatial variation in DAP price was very large and the price kept rising. For example, compared to August, the price of DAP was 20% higher in November. The price declined in December. In February 2006 the average price of the best quality DAP was Afs 24/kg, which is higher than in the prices in the last two months.

DAP prices are highly variable in Afghanistan. The large variations in DAP prices across provinces can be attributed to: (i) the marked difference in the quality of DAP available in the markets and (ii) the transportation costs involved. DAP prices in north part of the country are more consistent with the international price.

**Annex I: National Consumer Price Index (CPI) February, 2005 - January, 2006  
(March 2004 = 100)**

Item	Weights	Feb 05	Mar 05	Apr 05	May 05	Jun 05	Jul 05	Aug 05	Sep 05	Oct 05	Nov 05	Dec 05	Jan 06
<b>OVERALL INDEX</b>	<b>100.0</b>	<b>110.4</b>	<b>111.6</b>	<b>111.9</b>	<b>113.1</b>	<b>113.9</b>	<b>114.3</b>	<b>114.8</b>	<b>116.3</b>	<b>117.6</b>	<b>119.2</b>	<b>120.7</b>	<b>121.9</b>
<b>Food Index</b>	<b>60.6</b>	<b>106.7</b>	<b>108.7</b>	<b>109.1</b>	<b>110.6</b>	<b>111.4</b>	<b>111.4</b>	<b>111.8</b>	<b>113.1</b>	<b>114.2</b>	<b>114.4</b>	<b>115.0</b>	<b>115.7</b>
Bread and cereals	25.2	111.4	114.9	113.8	116.6	118.6	118.9	119.5	122.1	123.9	123.6	124.5	124.1
Meat	5.1	106.8	108.8	106.6	107.0	107.3	107.3	107.6	108.2	108.3	109.1	110.6	112.3
Milk, cheese and eggs	5.4	104.5	103.4	105.2	104.7	105.1	106.4	107.0	108.2	111.3	112.1	112.1	114.4
Oils and fats	5.9	96.0	95.4	95.4	94.8	93.8	94.3	94.6	95.2	96.1	94.9	94.4	95.6
Fresh and dried fruits	5.6	101.5	103.0	104.8	106.2	106.9	108.3	107.6	106.8	107.0	106.5	106.7	106.8
Vegetables including tubers	6.6	110.7	112.6	117.3	119.9	119.2	114.9	115.4	116.0	116.7	118.3	118.5	120.5
Sugar and sweets	1.8	106.1	108.5	110.6	111.6	112.0	113.1	115.0	115.8	114.7	116.5	116.5	121.6
Spices	1.2	99.9	104.5	105.2	105.9	105.6	106.6	105.5	106.4	105.6	110.0	110.9	112.3
Non-alcoholic beverages	2.0	99.6	100.2	101.3	101.6	102.4	102.4	102.5	101.8	100.8	101.0	102.4	102.0
Cigarrates and tobacco	1.8	95.9	96.7	98.6	98.6	98.6	98.2	98.9	96.9	96.4	96.8	98.0	99.2
<b>Non-food Index</b>	<b>39.4</b>	<b>116.0</b>	<b>116.1</b>	<b>116.1</b>	<b>116.8</b>	<b>117.7</b>	<b>118.7</b>	<b>119.3</b>	<b>121.1</b>	<b>122.8</b>	<b>126.6</b>	<b>129.5</b>	<b>131.5</b>
<b>Exchange rate Index</b>		99.7	98.9	98.6	100.1	100.5	100.5	99.2	99.2	98.5	98.2	100.2	101.1

Source: Central Statistics Office



**Annex II: Kabul Consumer Price Index for February 2005 to January, 2006  
(December 2002 = 100)**

Item	Weights	Feb 05	Mar 05	Apr 05	May 05	Jun 05	Jul 05	Aug 05	Sep 05	Oct 05	Nov 05	Dec 05	Jan 06
<b>OVERALL INDEX</b>	<b>100.0</b>	<b>120.8</b>	<b>123.0</b>	<b>123.7</b>	<b>124.9</b>	<b>125.9</b>	<b>126.2</b>	<b>126.9</b>	<b>129.3</b>	<b>130.6</b>	<b>132.0</b>	<b>133.7</b>	<b>135.0</b>
<b>Food</b>	<b>60.6</b>	<b>116.8</b>	<b>120.3</b>	<b>121.1</b>	<b>122.3</b>	<b>122.8</b>	<b>122.5</b>	<b>122.7</b>	<b>124.1</b>	<b>125.4</b>	<b>125.9</b>	<b>126.3</b>	<b>127.2</b>
Bread and cereals	25.2	129.5	134.8	134.6	136.4	137.2	136.3	136.4	139.4	141.9	142.9	143.2	144.3
Meat	5.1	135.6	137.7	143.5	145.6	146.4	145.3	145.6	145.4	146.3	146.0	146.8	147.6
Milk, cheese and eggs	5.4	121.0	120.4	120.4	119.5	119.2	119.0	120.3	121.7	122.6	122.4	123.2	123.6
Oils and fats	5.9	97.2	97.4	96.5	95.3	95.2	95.3	94.5	94.8	95.0	95.1	94.6	94.7
Fresh and dried fruits	5.6	104.8	109.0	110.6	112.6	113.9	114.4	114.2	114.7	116.8	117.0	117.5	120.1
Vegetables including tubers	6.6	87.8	93.2	95.4	97.4	96.0	96.3	96.4	96.3	95.6	95.4	96.3	97.2
Sugar and sweets	1.8	117.7	120.7	121.4	123.5	124.2	124.4	127.4	127.3	126.6	127.2	127.0	132.3
Spices	1.2	97.0	101.8	102.9	104.9	108.2	111.3	112.6	111.5	114.0	116.3	117.5	117.5
Non-alcoholic beverages	2.0	107.5	109.0	109.4	109.6	190.9	110.1	109.6	109.2	109.3	110.6	111.1	111.6
Cigarettes and tobacco	1.8	102.4	102.2	102.4	102.3	102.1	102.1	102.2	104.1	104.1	104.3	104.2	104.1
<b>Non-food Index</b>	<b>39.4</b>	<b>127.0</b>	<b>127.0</b>	<b>127.8</b>	<b>129.0</b>	<b>130.8</b>	<b>132.1</b>	<b>133.4</b>	<b>137.2</b>	<b>138.7</b>	<b>141.4</b>	<b>145.0</b>	<b>146.9</b>
<b>Exchange rate Index</b>		97.9	97.1	96.8	98.3	98.7	98.7	97.4	97.4	96.7	96.4	98.5	99.3

Source: Central Statistics Office

## Annex III

Retail market price of various agricultural commodities in provincial centers in February 2006

(Source: FAAHM)

SN	Region	Province	Wheat Local (Afs/kg)	Wheat imported (Afs/kg)	Wheat Flour local (Afs/kg)	Wheat Flour imported (Afs/kg)	Rice local (Afs/kg)	Rice imported (Afs/kg)	Maize (Afs/kg)	Mungbeans (Afs/kg)	Pea (Afs/kg)	Potato (Afs/kg)	Vegetable oil (Afs/litre)	Milk (Afs/litre)
1	North	Faryab	13	12	16	16	28	36		30	36	20	50	20
2	North	Juzjan	11	13	12	14	33	36	12	35	40	15	42	20
3	North	Sar-i-Pul	11	10		13	30		10	30	35	10	40	20
4	North	Balkh	12	13	13		30	34	9	30	35	10	40	20
5	North	Samangan	10	12				33	8	30	35	15	40	20
6	North-East	Bughlan	10	12	14	14	26	39	7	24	35	15	40	20
7	North-East	Kunduz	11		15	16	23	36	17	21	35	13	45	16
8	North-East	Takhar	9		12	15	25	30	12	24	30	25	40	25
9	North-East	Badakhshan												
10	West	Heart	11		13	16	25	35	10	35	35	14	60	20
11	West	Farah	11	12	16	16	20	35	9	37	45	11	50	20
12	West	Badghis	12			17		37	10	40	35	15	50	30
13	West-Central	Ghor	13		14	14		40		35	30	12	50	
14	West-Central	Bamyan	11	12	15	15		34		26	34	11	39	
15	Central	Kabul	11		15	15	25	35	12	35	40	15	40	20
16	Central	Parwan	11	10	12	15	20	36	10	35	35	11	45	16
17	Central	Kapisa	12	12	15	15	17	35	9	29	42	15	46	
18	Central	Logar	13	13	11	14		33	9	29	40	11	40	15
19	Central	Wardak	13	14	15	16	23	35	11	30	45	12	40	16
20	South	Paktya												
21	South	Paktika	14	16	16	17		35	13	40	40	15	45	30
22	South	Khost	11		12	14	32	33	8	32	21	10	50	34
23	South	Ghazni	12		13	13	32	36	13	30	36	15	50	20
24	East	Nangarhar	10			13	22	30	7	26	30	12	41	20
25	East	Laghman												
26	East	Kunarha	11	13	15	17	16	36	7	23	50	17	50	34
27	East	Nooristan												
28	South-West	Kandahar	12		13	14		34	9	27	49	13	42	23
29	South-West	Helmand	11		14	14		29	6	24	44	13	40	18
30	South-West	Zabul	11		14	15		35	10	28	30	12	45	15
31	South-West	Nimroz	11			15		32	10	30	39	12	45	15
32	South-West	Uruzgan												

## Annex III

Retail market price of various agricultural commodities in provincial centers in February 2006

(Source: FAAHM)

SN	Region	Province	Beef (Afs/kg)	Mutton (Afs/kg)	Chicken (Afs/kg)	Male Sheep live, one year (Afs/head)	Female Sheep live, one year (Afs/head)	Male Goat live, one year (Afs/head)	Female Goat live, one year (Afs/head)	Wheat seed best quality (Afs/kg)	Local Urea best quality (Afs/kg)	Imported Urea best quality (Afs/kg)
1	North	Faryab	140	180		5,000	5,000	3,500	3,200	13	10	10
2	North	Juzjan	140	180	70	4,500	5,000	3,000	3,500	12		
3	North	Sar-i-Pul	150	180	80	4,500	4,000	3,000	3,200	13		
4	North	Balkh	150	180	90	4,500	4,000	4,000	4,000		12	13
5	North	Samangan	130	160	90	4,500	4,000	3,500	3,000	11	11	10
6	North-East	Bughlan	130	160	90	4,500	4,000	3,500	3,000	11	11	10
7	North-East	Kunduz	150	170	70	6,000	4,000	4,000	2,500	13	11	14
8	North-East	Takhar	110	150		6,000	5,000	4,000	3,500	12	13	13
9	North-East	Badakhshan										
10	West	Heart	130	220	70	6,000	5,000	4,000	4,500	17	12	11
11	West	Farah	130	180	60	6,000	5,000	2,500	2,000	12	16	16
12	West	Badghis	140	180	70	7,000	5,000	3,500	4,000	12	16	16
13	West-Central	Ghor	140	150	100	5,000	5,000	4,500	3,000	13		14
14	West-Central	Bamyan	120	160	90	7,000	5,000	4,500	3,000	13		14
15	Central	Kabul	160	200	60	6,500	4,500	4,000	3,500	15	14	13
16	Central	Parwan	140	200	65	7,500	6,500	4,000	3,500	15	12	13
17	Central	Kapisa	140	180	70	4,000	4,000	3,000	3,000	13		13
18	Central	Logar	120	200	90	8,000	5,000	3,500	3,000	14		17
19	Central	Wardak	130	170	60	7,500	6,000	2,500	2,000	15	11	12
20	South	Paktya										
21	South	Paktika	120	166	70	8,000	6,000	4,500	5,000	18		15
22	South	Khost	120	150	78	6,000	5,500	5,000	4,300	12		12
23	South	Ghazni	150	180	75	7,000	6,000	3,000	3,500	14	13	13
24	East	Nangarhar	120	170	80	5,000	4,000	4,000	3,500	15	12	12
25	East	Laghman										
26	East	Kunarha	120	160	100	4,200	4,800	3,800	2,400			12
27	East	Nooristan										
28	South-West	Kandahar	125	205	60	6,000	5,000	4,000	3,500		12	24
29	South-West	Helmand	125	180	75	8,000	6,000	6,000	5,000	12		12
30	South-West	Zabul	150	180	78	6,300	5,900	4,500	4,400	12		13
31	South-West	Nimroz	150	180	82	5,500	4,800	4,500	3,900			11
32	South-West	Uruzgan										

## Annex III

## Retail market price of various agricultural commodities in provincial centers in February 2006

(Source: FAAHM)

SN	Region	Province	DAP best quality (Afs/kg)	Agriculture labour (Afs/day)	Pair of oxen hiring (Afs/day)	Water pump charge (Afs/hour)	Tractor hiring charge (Afs/hour)	Diesel (Afs/Litre)	Liquid Gas (Afs/kg)	Kerosene (Afs/litre)	Petrol (Afs/litre)	Raw Opium (Afs/kg)	Dry Opium (Afs/kg)
1	North	Faryab		200	500	600	600	32	55	35	35		
2	North	Juzjan		160	600	300	700	33		33	33	4,500	5,000
3	North	Sar-i-Pul	24	160	500		600	33		35	35	4,300	5,000
4	North	Balkh	23	200	600	150	450	37	45	50	37		
5	North	Samangan	22	150	500	140	650	37	50		33		
6	North-East	Bughlan	25	150	800	140	650	37	50		33		
7	North-East	Kunduz	25	190	600		800	35	55	45	35		
8	North-East	Takhar	26	130	700		800	37	55	35	32		
9	North-East	Badakhshan											
10	West	Heart	26	200	600		600	30	35	35	33		
11	West	Farah	26	200	450	100	450	32	40	35	30		
12	West	Badghis	26	200	250		500	33	43	50	33		
13	West-Central	Ghor	20	200	500	450	800	45	56	48	40		
14	West-Central	Bamyán	20	140		450	800	45	56	48	40		
15	Central	Kabul	24	200	700		600	30	48	40	40	7,500	14,000
16	Central	Parwan	25	180	500	600	400	30	50	32	41		
17	Central	Kapisa	25	200	500	400							
18	Central	Logar	24	200	700			28	50	30	34		
19	Central	Wardak	24	200	600	500	500	30	49	36	32		
20	South	Paktya											
21	South	Paktika	22	220		250	300	27	63	35	33		
22	South	Khost	23	200		238	332	27	50	32	29		
23	South	Ghazni	16	200	650	350	600	33	50	35	37		
24	East	Nangarhar	21	170	500	200	380	30	45	32	30		
25	East	Laghman											
26	East	Kunarha	25	170	600		420	42	60	45	40		12,000
27	East	Nooristan											
28	South-West	Kandahar	24	250		350	500	33	45	33	33		
29	South-West	Helmand	24	200		250	800	31		34	41	8,000	13,500
30	South-West	Zabul	24	200	550	250	420	37	52	40	40		
31	South-West	Nimroz		280			500	21	38	40	29		
32	South-West	Uruzgan											

**Annex IV**

**Weekly Market price of agricultural commodities/services**  
**[Source: Vulnerability Mapping Unit (VAM), WFP Afghanistan]**

Location	Commodity/Service	December, 05				January, 06				February, 06			
		Week 1	Week 2	Week 3	Week 4	Week 1	Week 2	Week 3	Week 4	Week 1	Week 2	Week 3	Week 4
Kabul	Wheat (kg)	11.0	12.7	13.0	12.7	12.7	12.8	12.8	12.9	12.8	12.8	12.8	12.8
Kandahar	Wheat (kg)	11.0	11.0	11.8	11.8	11.8	11.8	11.8	11.8	11.5	11.3	11.3	11.0
Jalalabad	Wheat (kg)	10.2	10.0	10.0	10.0	10.0	10.3	10.7	10.3	10.7	10.5	11.0	11.3
Heart	Wheat (kg)	11.1	11.1	10.5	10.5	10.5	10.5	10.5	10.6	10.6	10.6	10.0	10.5
Mazar	Wheat (kg)	10.0	10.2	10.2	10.2	10.0	10.0	10.0	10.5	10.5	10.5	10.5	10.5
Faizabad	Wheat (kg)	11.0	13.5	12.9	13.6	13.5	14.0	13.0	14.0	12.0	13.0	13.0	13.0
Bamyan	Wheat (kg)	11.0	11.0	10.5	11.0	11.0	11.0	11.0	11.0		11.0		
Maimana	Wheat (kg)	11.0	11.7	11.5	12.0	11.7	11.5	11.5	11.5	12.0	12.0	12.0	12.0
Kabul	Wheat flour (kg)	17.0	13.6	14.5	13.6	13.6	13.7	13.7	13.9	13.9	13.9	13.9	13.9
Kandahar	Wheat flour (kg)	13.6	13.1	13.5	13.5	13.7	13.7	13.7	13.6	13.3	13.0	13.0	12.5
Jalalabad	Wheat flour (kg)	13.3	13.3	13.3	13.3	13.3	13.3	13.7	13.7	13.7	13.8	13.3	12.5
Heart	Wheat flour (kg)	14.5	14.9	14.3	14.3	14.5	14.2	14.2	14.1	14.3	14.3	14.0	14.2
Mazar	Wheat flour (kg)	12.0	12.5	12.5	12.5	12.5	12.5	12.5	12.8	12.8	12.8	12.5	12.5
Faizabad	Wheat flour (kg)	15.0	17.0	17.1	17.9	18.0	18.0	16.0	17.0	15.0	15.0	15.0	15.0
Bamyan	Wheat flour (kg)	14.0	14.0	13.0	12.8	13.0	12.8	12.8	12.7		12.8		
Maimana	Wheat flour (kg)	13.5	13.9	13.5	14.4	13.6	15.0	15.0	15.7	15.0	15.0	15.0	15.0
Kabul	Bread (kg)	20.0	18.0	18.0	18.0	18.0	18.0	18.0	20.0	20.0	20.0	20.0	20.0
Kandahar	Bread (kg)	20.0	20.0	20.0	20.0	20.0	20.0	20.0	20.0	20.0	20.0	20.0	20.0
Jalalabad	Bread (kg)	17.6	17.6	17.6	17.6	17.6	17.6	17.6	17.6	17.6	17.6	17.6	17.6
Heart	Bread (kg)	20.0	20.0	20.0	20.0	20.0	20.0	20.0	20.0	20.0	20.0	20.0	20.0
Mazar	Bread (kg)	20.0	20.0	20.0	20.0	20.0	20.0	20.0	20.0	15.0	20.0	20.0	20.0
Faizabad	Bread (kg)	33.3	33.3	33.3	33.3	33.3	33.3	33.3	33.3	33.3	33.3	33.3	33.3
Bamyan	Bread (kg)	30.0	30.0	30.0	30.0	30.0	18.2	18.2	18.2		18.2		
Maimana	Bread (kg)	25.0	25.0	25.0	25.0	20.0	25.0	25.0	25.0	25.0	25.0	25.0	25.0

**Annex IV**

**Weekly Market price of agricultural commodities/services**  
**[Source: Vulnerability Mapping Unit (VAM), WFP Afghanistan]**

Location	Commodity/Service	December, 05				January, 06				February, 06			
		Week 1	Week 2	Week 3	Week 4	Week 1	Week 2	Week 3	Week 4	Week 1	Week 2	Week 3	Week 4
Kabul	Diesel/litre	36.0	35.0	38.0	37.0	37.5	38.0	38.0	38.0	32.0	32.0	29.0	28.0
Kandahar	Diesel/litre	34.0	34.0	36.0	34.5	33.5	33.5	32.0	32.0	28.3	28.0	27.0	25.0
Jalalabad	Diesel/litre	37.2	37.2	37.2	37.3	35.7	36.0	35.6	28.6	27.8	29.0	28.0	28.5
Heart	Diesel/litre	30.0	32.0	33.0	33.0	33.0	32.0	32.0	31.0	30.0	29.0	24.0	24.0
Mazar	Diesel/litre	36.0	36.0	36.0	36.0	36.0	37.0	36.0	37.0	37.0	35.0	35.0	36.0
Faizabad	Diesel/litre	45.0	45.0	50.0	50.0	44.0	40.0	38.0	43.0	36.0	36.0	35.0	35.0
Bamyan	Diesel/litre	28.0	37.0	40.0	40.0	40.0	39.0	39.0	37.0		36.0		
Maimana	Diesel/litre	38.0	38.0	37.0	34.0	37.0	37.0	37.0	40.0	39.0	30.0	30.0	28.0
Kabul	One-year female sheep, live	5,000	4,950	5,000	4,950	5,300	5,100	5,000	5,000	5,000	5,000	5,000	5,000
Kandahar	One-year female sheep, live	4,000	4,000	4,000	4,000	4,500	4,500	4,500	4,500	4,500	4,500	4,500	4,500
Jalalabad	One-year female sheep, live	3,766	3,766	3,766	3,766	3,766	3,700	3,633	3,666	4,000	3,900	4,100	4,100
Heart	One-year female sheep, live	3,550	3,600	3,500	3,500	3,600	3,600	3,600	3,500	3,500	3,450	3,450	3,500
Mazar	One-year female sheep, live	3,750	3,800	3,850	3,850	4,500	3,900	3,800	3,800	3,800	3,800	3,550	3,600
Faizabad	One-year female sheep, live	4,800	4,800	4,800	4,800	4,800	4,000	4,000	4,500	4,500	4,500	4,500	4,500
Bamyan	One-year female sheep, live	3,713	3,713	3,713	3,713	3,713	3,713	3,713	3,500		3,400		
Maimana	One-year female sheep, live	3,500	4,250	4,200	4,400	4,200	4,250	4,250	4,750	4,500	4,500	4,500	4,000
Kabul	Casual labour/day	200.0	180.0	180.0	180.0	180.0	180.0	180.0	180.0	180.0	180.0	180.0	180.0
Kandahar	Casual labour/day	150.0	150.0	150.0	150.0	150.0	150.0	150.0	170.0	170.0	170.0	170.0	170.0
Jalalabad	Casual labour/day	126.7	126.7	126.7	126.7	126.7	126.7	126.7	126.7	133.0	140.0	133.3	153.0
Heart	Casual labour/day	170.0	170.0	170.0	170.0	160.0	160.0	160.0	150.0	150.0	150.0	155.0	160.0
Mazar	Casual labour/day	130.0	140.0	140.0	140.0	130.0	130.0	120.0	120.0	120.0	130.0	130.0	130.0
Faizabad	Casual labour/day	250.0	250.0	250.0	250.0	250.0	200.0	200.0	250.0	200.0	200.0	200.0	200.0
Bamyan	Casual labour/day	200.0	200.0	200.0	200.0	200.0	200.0	200.0	200.0		200.0		
Maimana	Casual labour/day	200.0	200.0	200.0	200.0	200.0	250.0	250.0	250.0	250.0	250.0	225.0	170.0