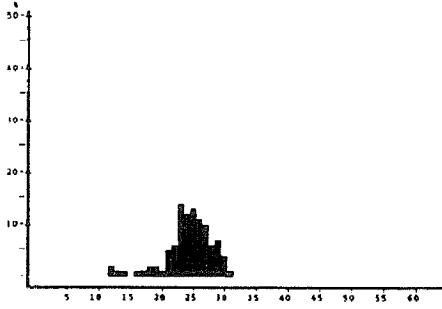
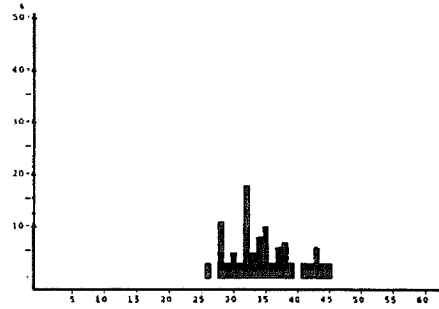


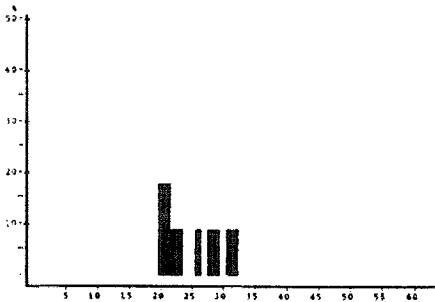
Annex I CONGO. Length distributions of main species



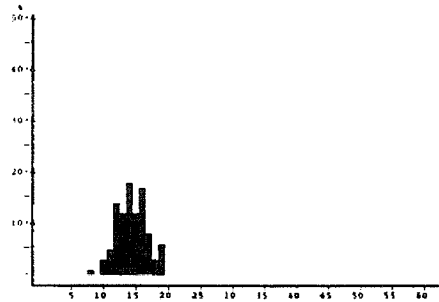
Dentex angolensis
Congo
MEAN LENGTH = 24.85cm N= 172
NUMBER OF SUBSAMPLES : 4



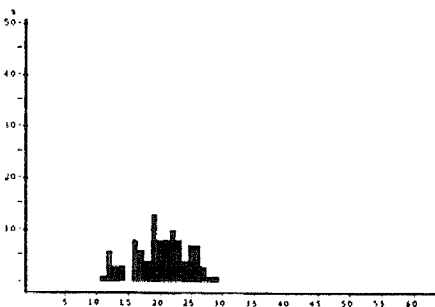
Umbrina canariensis
Congo
MEAN LENGTH = 35.03cm N= 37
NUMBER OF SUBSAMPLES : 2



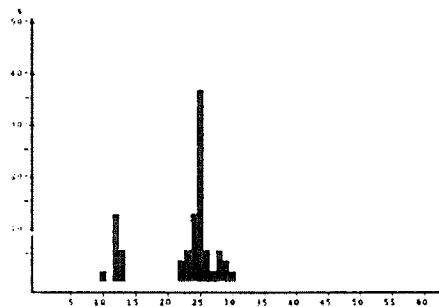
Dentex canariensis
Congo
MEAN LENGTH = 25.32cm N= 11
NUMBER OF SUBSAMPLES : 1



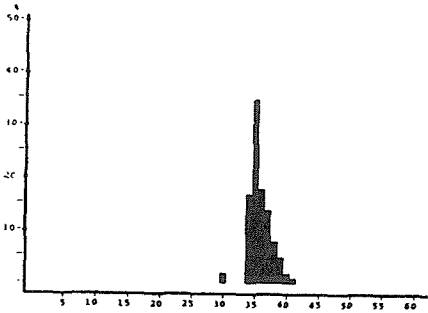
Pteroscion pelli
Congo
MEAN LENGTH = 14.88cm N= 84
NUMBER OF SUBSAMPLES : 1



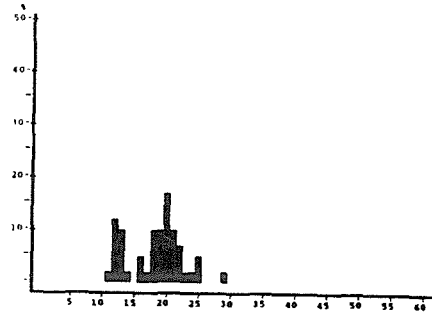
Pagellus bellottii
Congo
MEAN LENGTH = 20.71cm N= 73
NUMBER OF SUBSAMPLES : 1



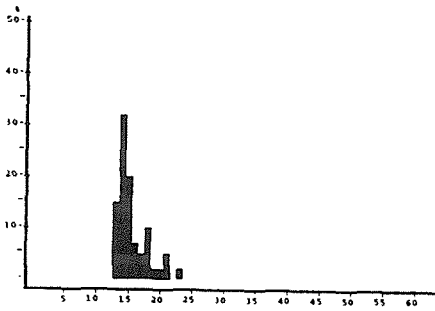
Pentheroscion mbizi
Congo
MEAN LENGTH = 22.92cm N= 52
NUMBER OF SUBSAMPLES : 1



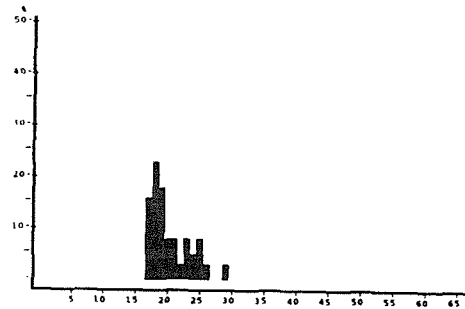
Trachurus trecae
Congo
MEAN LENGTH = 36.26cm N= 92
NUMBER OF SUBSAMPLES : 2



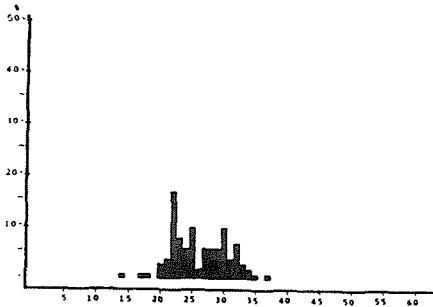
Sardinella aurita
Congo
MEAN LENGTH = 18.79cm N= 41
NUMBER OF SUBSAMPLES : 1



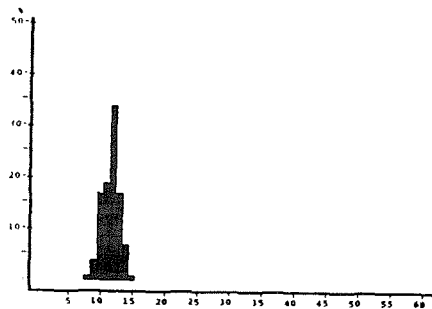
Chloroscombrus chrysurus
Congo
MEAN LENGTH = 15.94cm N= 59
NUMBER OF SUBSAMPLES : 1



Sardinella maderensis
Congo
MEAN LENGTH = 20.68cm N= 91
NUMBER OF SUBSAMPLES : 2

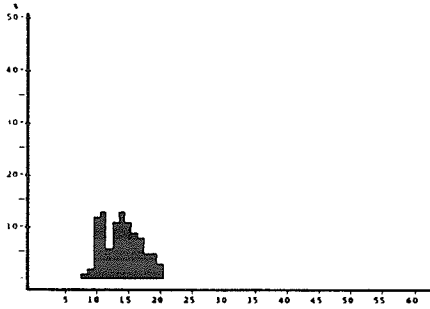


Merluccius polli
Congo
MEAN LENGTH = 26.82cm N= 124
NUMBER OF SUBSAMPLES : 2

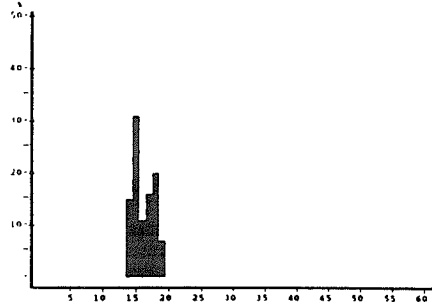


Parapenaeus longirostris
Congo
MEAN LENGTH = 12.13cm N= 364
NUMBER OF SUBSAMPLES : 3

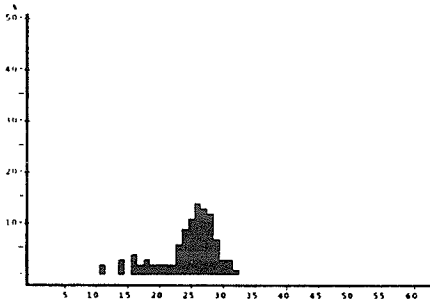
Annex II GABON. Length distributions of main species



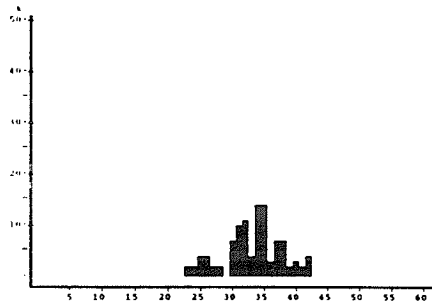
Dentex congoensis
 Gabon
 MEAN LENGTH = 14.36cm N= 419
 NUMBER OF SUBSAMPLES : 9



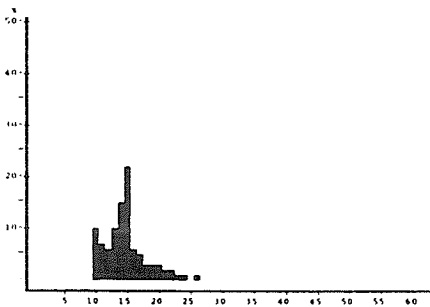
Boops boops
 Gabon
 MEAN LENGTH = 16.68cm N= 55
 NUMBER OF SUBSAMPLES : 1



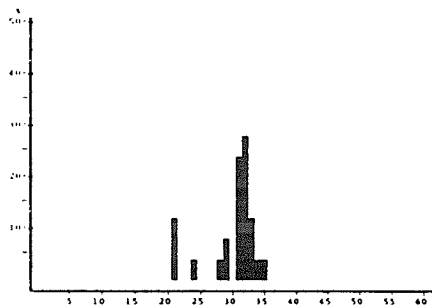
Dentex angolensis
 Gabon
 MEAN LENGTH = 24.92cm N= 394
 NUMBER OF SUBSAMPLES : 11



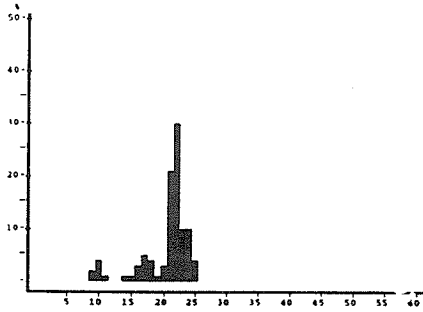
Sparus pagrus africanus
 Gabon
 MEAN LENGTH = 33.78cm N= 72
 NUMBER OF SUBSAMPLES : 1



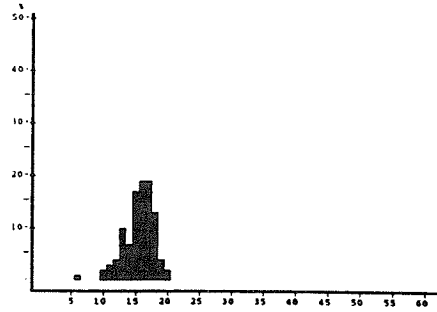
Pagellus bellottii
 Gabon
 MEAN LENGTH = 15.30cm N= 733
 NUMBER OF SUBSAMPLES : 16



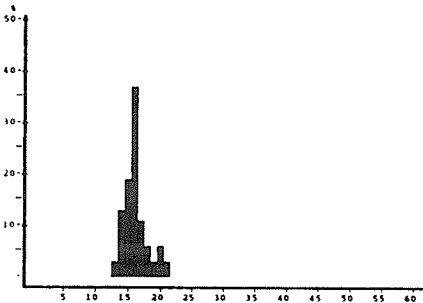
Dentex gibbosus
 Gabon
 MEAN LENGTH = 30.54cm N= 25
 NUMBER OF SUBSAMPLES : 1



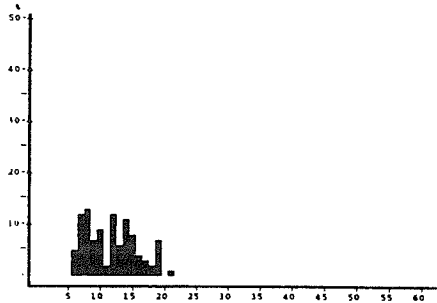
Sardinella aurita
 Gabon
 MEAN LENGTH = 20.86cm N= 275
 NUMBER OF SUBSAMPLES : 7



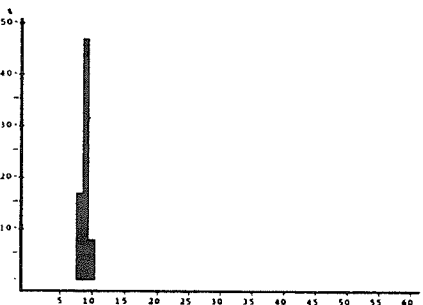
Brachydeuterus auritus
 Gabon
 MEAN LENGTH = 16.00cm N= 346
 NUMBER OF SUBSAMPLES : 8



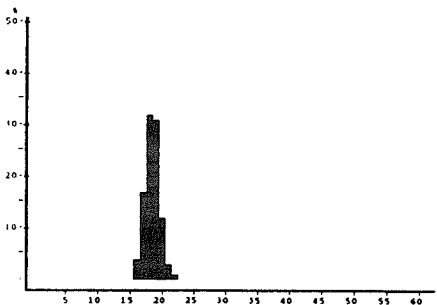
Sardinella maderensis
 Gabon
 MEAN LENGTH = 16.71cm N= 146
 NUMBER OF SUBSAMPLES : 5



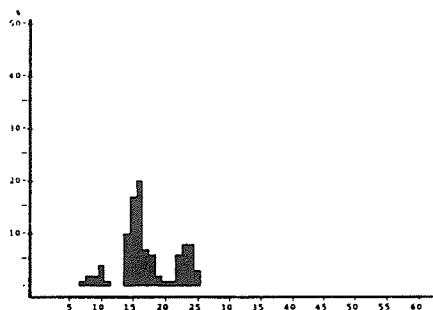
Anthias anthias
 Gabon
 MEAN LENGTH = 12.20cm N= 172
 NUMBER OF SUBSAMPLES : 2



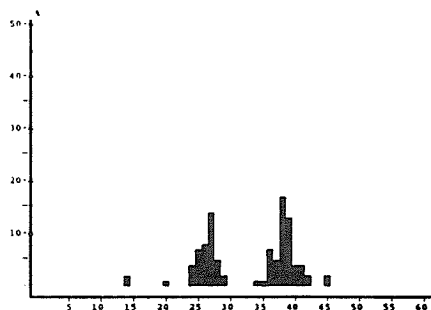
Engraulis encrasicolus
 Gabon
 MEAN LENGTH = 9.40cm N= 63
 NUMBER OF SUBSAMPLES : 1



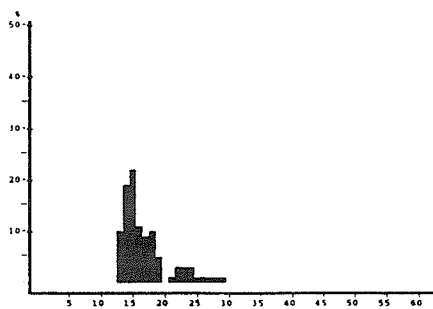
Spicara alta
 Gabon
 MEAN LENGTH = 18.93cm N= 171
 NUMBER OF SUBSAMPLES : 3



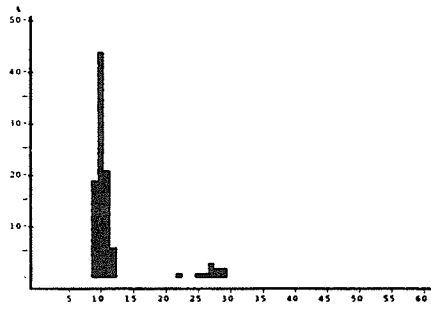
Trachurus trecae
 Gabon
 MEAN LENGTH = 17.64cm N= 745
 NUMBER OF SUBSAMPLES : 12



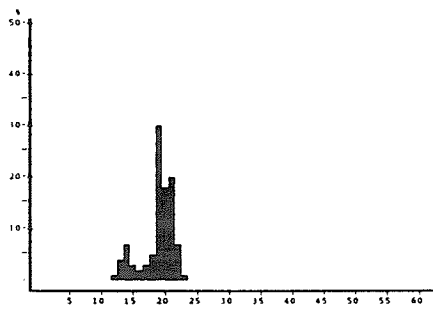
Decapterus rhonchus
 Gabon
 MEAN LENGTH = 33.10cm N= 158
 NUMBER OF SUBSAMPLES : 4



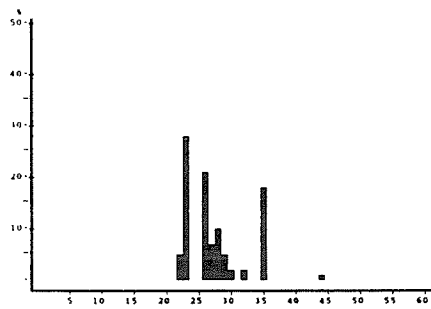
Selene dorsalis
 Gabon
 MEAN LENGTH = 17.27cm N= 133
 NUMBER OF SUBSAMPLES : 5



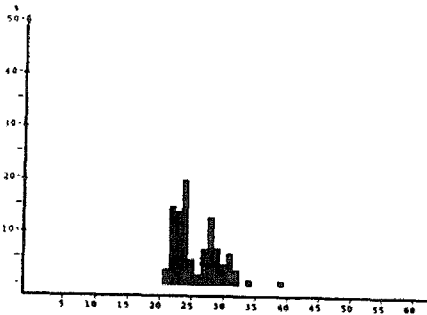
Scomber japonicus
 Gabon
 MEAN LENGTH = 12.33cm N= 57
 NUMBER OF SUBSAMPLES : 2



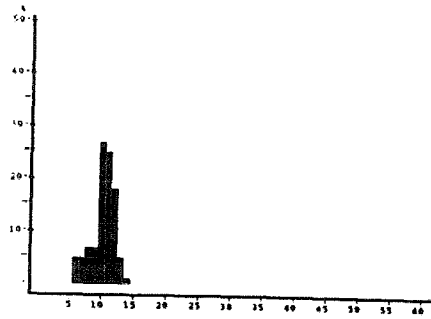
Chloroscombrus chrysurus
 Gabon
 MEAN LENGTH = 19.48cm N= 240
 NUMBER OF SUBSAMPLES : 4



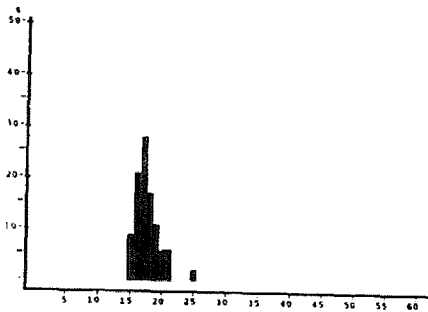
Sphyraena guachancho
 Gabon
 MEAN LENGTH = 28.15cm N= 30
 NUMBER OF SUBSAMPLES : 4



Merluccius polli
 Gabon
 MEAN LENGTH = 26.32cm N= 117
 NUMBER OF SUBSAMPLES : 4



Parapenaeus longirostris
 Gabon
 MEAN LENGTH = 10.77cm N= 146
 NUMBER OF SUBSAMPLES : 1



Illex coindetii
 Gabon
 MEAN LENGTH = 18.05cm N= 53
 NUMBER OF SUBSAMPLES : 1

Annex III Records of fishing stations

PROJECT STATION: 24
 DATE: 20/ 8/94 GEAR TYPE: BT No:1 POSITION: Lat S 458 Long E 1136
 start stop duration Purpose code: 3
 TIME :13:49:00 14:19:00 30 (min) Area code : 1
 LOG :3422.50 3424.10 1.60 GearCond.code: 1
 FDEPTH: 95 92 Validity code: 1
 BDEPTH: 95 92
 Towing dir: 350° Wire out: 380 m Speed: 30 kn*10
 Sorted: 173 Kg Total catch: 488.12 CATCH/HOUR: 976.24

SPECIES	CATCH/HOUR weight	numbers	% OF TOT. C	SAMP
Trachurus trecae	318.14	622	32.59	47
Trichurus lepturus	186.20	518	19.07	
Pentheroscion mbizi	167.92	988	17.20	
Dentex angolensis	125.00	488	12.80	45
Brotula barbata	49.00	70	5.02	46
Umbrina canariensis	34.22	58	3.51	
Cynoponticus ferox	20.60	12	2.11	
Synagrops microlepis	18.33	8665	1.88	
Epinephelus aeneus	15.10	2	1.55	
Squatina squatina	10.74	6	1.10	
Raja miraletus	5.90	12	0.60	
Zeus faber	5.10	12	0.52	
Chelidonichthys gabonensis	4.70	34	0.48	
Pterothrissus belloci	4.40	24	0.45	
Cynoglossus sp.	2.90	6	0.30	
Branchiostegus semifasciatus	2.04	6	0.21	
Pegusa lascaris	1.86	18	0.19	
Pontinus accraensis	1.20	58	0.12	
Sepia bertheloti	1.16	6	0.12	
Uranoscopus albesca	1.16	12	0.12	
Parapenaeus longirostris	0.58	30	0.06	
Total		976.25	100.00	

PROJECT STATION: 27
 DATE: 20/ 8/94 GEAR TYPE: BT No:6 POSITION: Lat S 503 Long E 1122
 start stop duration Purpose code: 3
 TIME :20:22:00 20:52:00 30 (min) Area code : 1
 LOG :4457.80 4459.20 1.40 GearCond.code: 1
 FDEPTH: 476 480 Validity code: 1
 BDEPTH: 476 480
 Towing dir: 330° Wire out: 1400 m Speed: 29 kn*10
 Sorted: 34 Kg Total catch: 140.00 CATCH/HOUR: 280.00

SPECIES	CATCH/HOUR weight	numbers	% OF TOT. C	SAMP
Nematocarcinus africanus	122.40	14628	43.71	
Merluccius polli	72.00	132	25.71	
Deania profundorum	37.80	84	13.50	
Laemonema laureysi	9.12	288	3.26	
Aristeus varidens	8.04	1008	2.87	
Gadella imberbis	7.68	312	2.74	
Chaunax pictus	6.00	24	2.14	
Diplophos sp.	5.16	368	1.84	
Illex coindetii	4.80	12	1.71	
HALOSAURIDAE	1.68	48	0.60	
Nezumia aequalis	1.44	48	0.51	
Hoplostethus cadenati	1.20	24	0.43	
Dibranchius atlanticus	1.20	12	0.43	
Plesiopeneus edwardsianus	1.20	12	0.43	
Total		279.72	99.88	

PROJECT STATION: 28
 DATE: 21/ 8/94 GEAR TYPE: BT No:6 POSITION: Lat S 457 Long E 1119
 start stop duration Purpose code: 3
 TIME :06:43:00 07:13:00 30 (min) Area code : 1
 LOG :4491.10 4492.70 1.60 GearCond.code: 1
 FDEPTH: 400 406 Validity code: 1
 BDEPTH: 400 406
 Towing dir: 330° Wire out: 1200 m Speed: 30 kn*10
 Sorted: 24 Kg Total catch: 360.60 CATCH/HOUR: 721.20

SPECIES	CATCH/HOUR weight	numbers	% OF TOT. C	SAMP
Nematocarcinus africanus	498.00	98878	69.05	
Deania profundorum	129.00	270	17.89	
Scorpaena angolensis	24.00	480	3.33	
HALOSAURIDAE	15.00	30	2.08	
Bathysgadus melanobranchus	11.10	30	1.54	
Chaunax pictus	10.50	60	1.46	
Gadella imberbis	9.00	150	1.25	
Laemonema laureysi	8.10	60	1.12	
Aristeus varidens	7.50	660	1.04	
Stereomastix sp.	4.50	390	0.62	
Diplophos sp.	4.50	420	0.62	
Total		721.20	100.00	

PROJECT STATION: 29
 DATE: 21/ 8/94 GEAR TYPE: BT No:6 POSITION: Lat S 454 Long E 1120
 start stop duration Purpose code: 3
 TIME :08:22:00 08:52:00 30 (min) Area code : 1
 LOG :4498.30 4499.70 1.40 GearCond.code: 1
 FDEPTH: 246 252 Validity code: 1
 BDEPTH: 246 252
 Towing dir: 330° Wire out: 800 m Speed: 31 kn*10
 Sorted: 286 Kg Total catch: 193.19 CATCH/HOUR: 386.38

SPECIES	CATCH/HOUR weight	numbers	% OF TOT. C	SAMP
Pterothrissus belloci	172.00	814	44.52	
Trichurus lepturus	54.04	1134	13.99	
MYCTOPHIDAE	53.20	14000	13.77	
Parapenaeus longirostris	52.08	7042	13.48	52
Merluccius polli	24.08	126	6.23	
OPHIDIIDAE	6.58	294	1.70	
Synagrops microlepis	5.18	294	1.34	
Brotula barbata	5.04	14	1.30	
Pentheroscion mbizi	3.36	14	0.87	
Illex coindetii	2.80	14	0.72	
Bembrops heterurus	2.52	70	0.65	
Erythrocles monodi	2.00	2	0.52	
Dibranchius atlanticus	1.40	28	0.36	
Stereomastix sp.	1.40	112	0.36	
Trachurus trecae	0.70	14	0.18	
Total		386.38	99.99	

PROJECT STATION: 30
 DATE: 21/ 8/94 GEAR TYPE: BT No:1 POSITION: Lat S 439 Long E 1126
 start stop duration Purpose code: 3
 TIME :14:05:00 14:35:00 30 (min) Area code : 1
 LOG :3548.30 3550.00 1.70 GearCond.code: 1
 FDEPTH: 69 72 Validity code: 1
 BDEPTH: 69 72
 Towing dir: 310° Wire out: 300 m Speed: 30 kn*10
 Sorted: 144 Kg Total catch: 814.68 CATCH/HOUR: 1629.36

SPECIES	CATCH/HOUR weight	numbers	% OF TOT. C	SAMP
Trichurus lepturus	753.80	1884	46.26	
Trachurus trecae	709.00	1680	43.51	53
Synagrops microlepis	52.22	11400	3.20	
Raja miraletus	51.52	100	3.16	
Brotula barbata	15.68	34	0.96	
Cynoponticus ferox	15.20	2	0.93	
Pamulirus regius	6.16	12	0.38	
Dentex angolensis	5.16	12	0.32	
Sardinella aurita	4.26	12	0.26	1
C R A B S	3.36	12	0.21	
Torpedo torpedo	3.24	12	0.20	
Citharus linguatula	2.36	56	0.14	
Priacanthus arenatus	1.80	34	0.11	
Sepia sp.	1.12	12	0.07	
Sepia bertheloti	1.12	12	0.07	
Pagellus bellottii	1.12	12	0.07	
Uranoscopus albesca	1.12	12	0.07	
Zeus faber	0.56	12	0.03	
Total		1628.80	99.95	

PROJECT STATION: 25
 DATE: 20/ 8/94 GEAR TYPE: BT No:1 POSITION: Lat S 503 Long E 1127
 start stop duration Purpose code: 3
 TIME :16:14:00 16:44:00 30 (min) Area code : 1
 LOG :3437.70 3439.20 1.50 GearCond.code: 1
 FDEPTH: 178 178 Validity code: 1
 BDEPTH: 178 178
 Towing dir: 330° Wire out: 600 m Speed: 30 kn*10
 Sorted: 65 Kg Total catch: 257.00 CATCH/HOUR: 514.00

SPECIES	CATCH/HOUR weight	numbers	% OF TOT. C	SAMP
Pterothrissus belloci	92.00	528	17.90	49
Synagrops microlepis	84.00	4200	16.34	
MYCTOPHIDAE	76.40	3184	14.86	
Pentheroscion mbizi	63.60	416	12.37	48
Parapenaeus longirostris	59.44	7822	11.56	
Trichurus lepturus	35.60	264	6.93	
Zenopsis conchifer	32.40	72	6.30	
Dentex angolensis	22.48	72	4.37	
Octopus sp.	15.60	16	3.04	
Chlorophthalmus atlanticus	12.80	1056	2.49	
Raja miraletus	6.32	8	1.23	
Spicara alta	5.20	48	1.01	
Uranoscopus albesca	3.12	24	0.61	
Pontinus accraensis	2.40	16	0.47	
Illex coindetii	0.80	8	0.16	
Peristodion cataphractum	0.80	8	0.16	
Homonole microstoma	0.48	32	0.09	
Macroparalepis macrogeneion	0.20	16	0.04	
NOEMEIDAE	0.08	8	0.02	
Total		513.72	99.95	

PROJECT STATION: 26
 DATE: 20/ 8/94 GEAR TYPE: BT No:1 POSITION: Lat S 502 Long E 1124
 start stop duration Purpose code: 3
 TIME :17:33:00 18:03:00 30 (min) Area code : 1
 LOG :3443.20 3445.00 1.80 GearCond.code: 1
 FDEPTH: 304 304 Validity code: 1
 BDEPTH: 304 304
 Towing dir: 315° Wire out: 950 m Speed: 30 kn*10
 Sorted: 16 Kg Total catch: 78.75 CATCH/HOUR: 157.50

SPECIES	CATCH/HOUR weight	numbers	% OF TOT. C	SAMP
Merluccius polli	99.00	560	62.86	50
Parapenaeus longirostris	19.00	1220	12.06	51
Parapenaeus longirostris	5.50	1670	3.49	
Pontinus sp.	5.20	80	3.30	
Laemonema laureysi	3.80	90	2.41	
Scorpaena angolensis	3.20	60	2.03	
Coelorrhinchus coelorrhinchus	3.10	60	1.97	
Pterothrissus belloci	3.10	350	1.97	
Ariomma bondi	3.00	110	1.90	
Trichurus lepturus	2.70	70	1.71	
Galeus polli	2.70	20	1.71	
Synagrops microlepis	2.00	110	1.27	
Squalus mitsukurina	1.70	10	1.08	
Bembrops heterurus	1.50	30	0.95	
Chaunax pictus	1.00	10	0.63	
Total		156.50	99.34	

PROJECT STATION: 31
 DATE: 21/ 8/94 GEAR TYPE: BT No:1 POSITION: Lat S 443 Long E 1119
 start stop duration Purpose code: 3
 TIME :15:56:00 16:22:00 26 (min) Area code : 1
 LOG :3559.80 3561.00 1.20 GearCond.code: 1
 FDEPTH: 109 106 Validity code: 1
 BDEPTH: 109 106
 Towing dir: 150° Wire out: 400 m Speed: 30 kn*10
 Sorted: 134 Kg Total catch: 343.11 CATCH/HOUR: 791.79

SPECIES	CATCH/HOUR		% OF TOT. C	SAMP
	weight	numbers		
Trichurus lepturus	411.92	1025	52.02	
Umbriina canariensis	80.03	138	10.11	55
Synagrops microlepis	60.92	23049	7.69	
Pseudolithus brachygnathus	37.11	122	4.69	56
Dentex angolensis	35.72	122	4.51	54
Cynoponticus ferox	26.54	5	3.35	
Argyrosomus hololepidotus	24.92	2	3.15	
Octopus vulgaris	22.48	12	2.84	
Branchiostegus semifasciatus	18.78	21	2.37	
SCORPAENIDAE	16.06	28	2.03	
S H A F K S	13.06	5935	1.65	
Galeorhinus galeus	11.91	5	1.50	
Pentheroscion mbizi	11.28	60	1.42	
Brotula barbata	3.65	23	0.46	
Raja miraletus	2.26	5	0.29	
Sardinella aurita	2.22	5	0.28	
Citharus linguatula	2.22	67	0.28	
Pontinus accraensis	2.15	16	0.27	
Zeus faber	1.98	12	0.25	
Torpedo torpedo	1.55	5	0.20	
Uranoscopus albesca	1.38	23	0.17	
Ilisha ramada	1.11	134	0.14	
Illex coindetii	0.83	12	0.10	
Illex coindetii	0.60	51	0.08	
Chelidonichthys gabonensis	0.55	5	0.07	
Gadella imberbis	0.55	5	0.07	
Total	791.78		99.99	

PROJECT STATION: 32
 DATE: 21/ 8/94 GEAR TYPE: BT No:1 POSITION: Lat S 444 Long E 1113
 start stop duration Purpose code: 3
 TIME :17:33:00 18:03:00 30 (min) Area code : 1
 LOG :3569.60 3571.00 1.40 GearCond.code: 1
 FDEPTH: 198 200 Validity code: 1
 BDEPTH: 198 200
 Towing dir: 120° Wire out: 650 m Speed: 29 kn*10
 Sorted: 121 Kg Total catch: 121.14 CATCH/HOUR: 242.28

SPECIES	CATCH/HOUR		% OF TOT. C	SAMP
	weight	numbers		
Umbriina canariensis	48.00	96	19.81	57
Chlorophthalmus atlanticus	44.64	9504	18.42	
Trichurus lepturus	39.84	456	16.44	
Shrimps, small, non comm.	25.92	33120	10.70	
MYCTOPHIDAE	21.60	12816	8.92	
Parapenaeus longirostris	15.24	2440	6.29	
Synagrops microlepis	12.40	768	5.12	
Pterothrissus belloci	8.96	56	3.70	
Sepia sp.	4.24	432	1.75	
Cynoponticus ferox	4.00	8	1.65	
Sardinella aurita	3.36	8	1.39	
Brotula barbata	3.12	8	1.29	
Illex coindetii	2.40	24	0.99	
Sardinella maderensis	2.16	8	0.89	
Lestidiopsis sp.	2.00	368	0.83	
Spicara alta	1.60	8	0.66	
OPHIIDAE	0.80	16	0.33	
Citharus linguatula	0.80	16	0.33	
Zenopsis conchifer	0.80	8	0.33	
Pontinus accraensis	0.40	8	0.17	
Total	242.28		100.01	

PROJECT STATION: 33
 DATE: 21/ 8/94 GEAR TYPE: PT No:1 POSITION: Lat S 445 Long E 1107
 start stop duration Purpose code: 1
 TIME :19:15:00 19:46:00 31 (min) Area code : 1
 LOG :3578.30 3580.90 2.10 GearCond.code: 2
 FDEPTH: 20 20 Validity code: 4
 BDEPTH: 760 610
 Towing dir: 90° Wire out: 110 m Speed: 42 kn*10
 Sorted: 51 Kg Total catch: 102.83 CATCH/HOUR: 199.03

SPECIES	CATCH/HOUR		% OF TOT. C	SAMP
	weight	numbers		
Trichurus lepturus	96.77	24387	48.62	
MYCTOPHIDAE	92.90	44981	46.68	
Trachurus trecae	5.85	12	2.94	
Shrimps, small, non comm.	3.21	2570	1.61	
Sepia sp.	0.27	8	0.14	
Lestidiopsis sp.	0.15	12	0.08	
Illex coindetii	0.12	4	0.06	
Total	199.27		100.13	

PROJECT STATION: 34
 DATE: 22/ 8/94 GEAR TYPE: PT No:2 POSITION: Lat S 425 Long E 1127
 start stop duration Purpose code: 1
 TIME :01:28:00 01:58:00 30 (min) Area code : 1
 LOG :3631.90 3633.80 1.90 GearCond.code: 1
 FDEPTH: 0 0 Validity code: 1
 BDEPTH: 23 26
 Towing dir: 140° Wire out: 140 m Speed: 38 kn*10
 Sorted: 62 Kg Total catch: 1593.00 CATCH/HOUR: 3166.00

SPECIES	CATCH/HOUR		% OF TOT. C	SAMP
	weight	numbers		
Sardinella maderensis	1590.00	19240	49.91	58
Sardinella aurita	490.00	6880	15.38	59
S H A F K S	400.00	20	12.55	
SPHYRRIIDAE	300.00	12	9.42	
Brachydeuterus auritus	268.00	21440	8.41	
Ilisha africana	53.20	920	1.67	
Selene dorsalis	44.80	720	1.41	
Sphyræna guachancho	25.60	240	0.80	
Sepia sp.	10.00	280	0.31	
Pteroscion pelli	4.00	160	0.13	
Total	3165.60		99.99	

PROJECT STATION: 35
 DATE: 22/ 8/94 GEAR TYPE: PT No:1 POSITION: Lat S 426 Long E 1110
 start stop duration Purpose code: 1
 TIME :04:50:00 05:20:00 30 (min) Area code : 1
 LOG :3658.40 3659.90 1.50 GearCond.code: 1
 FDEPTH: 30 30 Validity code: 1
 BDEPTH: 88 82
 Towing dir: 15° Wire out: 100 m Speed: 34 kn*10
 Sorted: 51 Kg Total catch: 51.36 CATCH/HOUR: 102.72

SPECIES	CATCH/HOUR		% OF TOT. C	SAMP
	weight	numbers		
Trichurus lepturus	98.80	168	96.18	
Synagrops sp.	2.08	8	2.02	
Stromateus fiatola	1.24	2	1.21	
Sepia sp.	0.40	22	0.39	
Saurida brasiliensis	0.20	14	0.19	
Total	102.72		99.99	

PROJECT STATION: 36
 DATE: 22/ 8/94 GEAR TYPE: BT No:6 POSITION: Lat S 432 Long E 1057
 start stop duration Purpose code: 3
 TIME :07:45:00 08:15:00 30 (min) Area code : 1
 LOG :3680.30 3681.80 1.50 GearCond.code: 1
 FDEPTH: 315 325 Validity code: 1
 BDEPTH: 315 325
 Towing dir: 330° Wire out: 1000 m Speed: 32 kn*10
 Sorted: 32 Kg Total catch: 280.68 CATCH/HOUR: 561.36

SPECIES	CATCH/HOUR		% OF TOT. C	SAMP
	weight	numbers		
Ectreposestes imus	179.10	6120	31.90	
Merluccius polli	156.00	1242	27.79	60
Shrimps, small, non comm.	67.68	39060	12.06	
Chlorophthalmus sp.	41.04	1026	7.31	
Zenopsis conchifer	21.96	36	3.91	
Synagrops microlepis	18.00	594	3.22	
Illex coindetii	16.20	90	2.99	
Trichurus lepturus	14.94	90	2.66	
MYCTOPHIDAE	12.24	4590	2.18	
Parapenaeus longirostris	10.26	882	1.83	
Nematopalaemon hastatus	7.20	522	1.28	
Lacemonema sp.	4.32	90	0.77	
Trigla lyra	3.60	18	0.64	
Hoplostethus cadonati	3.60	54	0.64	
Gadella maraldi	2.70	72	0.48	
Chaunax pictus	2.52	36	0.45	
Total	561.36		100.00	

PROJECT STATION: 37
 DATE: 22/ 8/94 GEAR TYPE: BT No:6 POSITION: Lat S 434 Long E 1050
 start stop duration Purpose code: 3
 TIME :10:34:00 11:04:00 30 (min) Area code : 1
 LOG :3698.60 3700.00 1.50 GearCond.code: 1
 FDEPTH: 177 170 Validity code: 1
 BDEPTH: 177 170
 Towing dir: 315° Wire out: 550 m Speed: 30 kn*10
 Sorted: 28 Kg Total catch: 140.05 CATCH/HOUR: 280.10

SPECIES	CATCH/HOUR		% OF TOT. C	SAMP
	weight	numbers		
Synagrops microlepis	80.00	6610	28.56	
Pterothrissus belloci	67.50	410	24.10	
Chlorophthalmus atlanticus	30.00	6770	10.71	
Dentex angolensis	21.30	50	7.60	61
Trichurus lepturus	18.00	50	6.43	
Illex coindetii	16.80	390	6.00	
Zenopsis conchifer	14.50	40	5.18	
Pseudolithus brachygnathus	5.80	10	2.07	
Lophiodes kempi	5.20	10	1.86	
Spicara alta	4.90	40	1.75	
Pentheroscion mbizi	3.90	30	1.39	
Parapenaeus longirostris	3.40	10	1.21	
Zeus faber	3.00	10	1.07	
Squatinia sculeata	1.90	10	0.68	
Ectreposestes imus	1.50	50	0.54	
Bembrops sp.	1.20	20	0.43	
Citharus linguatula	0.60	40	0.21	
Saurida brasiliensis	0.50	70	0.18	
Trachurus trecae	0.10	10	0.04	
Total	280.10		100.01	

PROJECT STATION: 38
 DATE: 22/ 8/94 GEAR TYPE: BT No:1 POSITION: Lat S 419 Long E 1104
 start stop duration Purpose code: 3
 TIME :13:21:00 13:53:00 32 (min) Area code : 1
 LOG :3718.20 3719.70 1.50 GearCond.code: 1
 FDEPTH: 82 81 Validity code: 1
 BDEPTH: 82 81
 Towing dir: 355° Wire out: 350 m Speed: 30 kn*10
 Sorted: 44 Kg Total catch: 44.44 CATCH/HOUR: 83.33

SPECIES	CATCH/HOUR		% OF TOT. C	SAMP
	weight	numbers		
Pagellus bellottii	37.69	248	45.23	63
Brotula barbata	10.31	28	12.37	64
Dentex angolensis	6.56	56	7.87	62
Octopus sp.	5.94	4	7.13	
Dentex canariensis	5.14	21	6.41	65
Trachurus trecae	3.66	90	4.39	
Torpedo torpedo	3.34	6	4.01	
Raja miraletus	2.21	6	2.65	
Sriacanthus arcuatus	1.37	9	1.64	
Zeus faber	1.18	6	1.42	
Citharus linguatula	1.07	24	1.28	
Uranoscopus albesca	0.75	2	0.90	
Zenopsis conchifer	0.75	4	0.90	
Echeneis naucrates	0.68	2	0.82	
Todaropsis eblanae	0.58	19	0.70	
Chelidonichthys gabonensis	0.49	8	0.59	
Selene dorsalis	0.45	2	0.54	
Saurida brasiliensis	0.26	32	0.31	
Scorpena oronoti	0.15	2	0.18	
Bembrops sp.	0.13	2	0.16	
Boops boops	0.11	6	0.13	
GOBIIDAE	0.06	4	0.07	
Sepiella ornata	0.06	2	0.07	
Parapenaeopsis atlantica	0.06	6	0.07	
Lophiodes kempi	0.06	4	0.07	
Sepia sp.	0.06	2	0.07	
Illex coindetii	0.02	36	0.02	
Total	83.34		100.00	

PROJECT STATION: 39
DATE: 22/ 8/94 GEAR TYPE: BT No:1 POSITION: Lat S 412 Long E 1116
start stop duration Purpose code: 3
TIME :16:09:00 16:39:00 30 (min) Area code : 1
LOG :3739.80 3741.20 1.40 GearCond. code:
FDEPTH: 22 20 Validity code: 1
BDEPTH: 22 20
Towing dir: 340° Wire out: 140 m Speed: 30 kn*10
Sorted: 34 Kg Total catch: 205.44 CATCH/HOUR: 410.88

SPECIES	CATCH/HOUR		% OF TOT. C	SAMP
	weight	numbers		
Trichurus lepturus	220.80	6828	53.74	
Ilisha africana	48.40	1044	11.78	
Selene dorsalis	39.60	1068	9.64	
Brachydeuterus auritus	39.24	4176	9.55	
Pseudotolithus brachygnathus	15.00	84	3.65	
Pteracion pelli	10.92	204	2.66	
Lagocephalus laevigatus	6.20	12	1.51	
Sphyaera guachancho	5.40	24	1.31	
Galeoides decadactylus	5.04	48	1.23	
Trachurus trecae	4.92	144	1.20	
Raja miraletus	4.44	24	1.08	
Pentapneustes quinquequarius	3.96	36	0.96	
Pagellus bellottii	2.88	24	0.70	
Sepiella orzata	2.02	48	0.49	
Chloroscombrus chrysurus	1.44	24	0.35	
Shrimps, small, non comm.	0.36	108	0.09	
Dicologlossa cupeata	0.12	12	0.03	
Citharus linguatula	0.12	12	0.03	
Total	410.86		100.00	

PROJECT STATION: 43
DATE: 23/ 8/94 GEAR TYPE: BT No:6 POSITION: Lat S 405 Long E 1054
start stop duration Purpose code: 3
TIME :11:17:00 11:47:00 30 (min) Area code : 2
LOG :3843.20 3844.70 1.50 GearCond. code:
FDEPTH: 48 47 Validity code: 1
BDEPTH: 48 47
Towing dir: 330° Wire out: 170 m Speed: 31 kn*10
Sorted: 60 Kg Total catch: 335.85 CATCH/HOUR: 671.70

SPECIES	CATCH/HOUR		% OF TOT. C	SAMP
	weight	numbers		
Brachydeuterus auritus	429.00	13816	63.87	77
Sepia officinalis hierredda	84.16	188	12.53	
Trachurus trecae	83.60	3884	12.45	75
Pagellus bellottii	36.30	474	5.40	76
Raja miraletus	12.98	44	1.93	
Priacanthus arenatus	11.66	120	1.74	
Fistularia petimba	4.08	12	0.61	
Alectis alexandrinus	2.72	2	0.40	
Sphyaera guachancho	2.42	12	0.36	
Illex coindetii	1.30	132	0.16	
Cynoglossus canariensis	1.00	12	0.15	
Boops boops	1.00	22	0.15	
Lagocephalus laevigatus	0.78	12	0.12	
Torpedo torpedo	0.78	12	0.12	
Saurida brasiliensis	0.12	12	0.02	
Total	671.70		100.01	

PROJECT STATION: 40
DATE: 22/ 8/94 GEAR TYPE: BT No:1 POSITION: Lat S 405 Long E 1110
start stop duration Purpose code: 3
TIME :17:32:00 18:03:00 31 (min) Area code : 1
LOG :3748.50 3749.90 1.40 GearCond. code:
FDEPTH: 17 17 Validity code: 1
BDEPTH: 17 17
Towing dir: 310° Wire out: 120 m Speed: 30 kn*10
Sorted: 28 Kg Total catch: 84.03 CATCH/HOUR: 162.64

SPECIES	CATCH/HOUR		% OF TOT. C	SAMP
	weight	numbers		
Trichurus lepturus	42.10	1661	25.89	
Brachydeuterus auritus	26.42	794	16.24	
Sepiella orzata	20.85	987	12.82	
Pteracion pelli	18.58	488	11.42	69
Sardinella maderensis	14.81	302	9.11	66
Chloroscombrus chrysurus	13.35	343	8.21	68
Parapenaeus longirostris	5.57	761	3.42	67
Sepia officinalis hierredda	5.46	6	3.36	
Cynoglossus senegalensis	4.70	6	2.89	
Dicologlossa cupeata	2.90	87	1.78	
Ilisha africana	1.92	23	1.18	
Pseudotolithus typus	1.92	23	1.18	
Trachurus trecae	1.57	52	0.97	
Galeoides decadactylus	1.51	75	0.93	
Pseudotolithus epiperucus	0.58	6	0.36	
Selene dorsalis	0.41	6	0.25	
Total	162.65		100.01	

PROJECT STATION: 44
DATE: 23/ 8/94 GEAR TYPE: PT No:1 POSITION: Lat S 400 Long E 1052
start stop duration Purpose code: 1
TIME :12:25:00 12:55:00 30 (min) Area code : 2
LOG :3846.40 3848.40 2.00 GearCond. code:
FDEPTH: 20 20 Validity code: 9
BDEPTH: 48 47
Towing dir: 130° Wire out: 80 m Speed: 40 kn*10
Sorted: Kg Total catch: CATCH/HOUR:

SPECIES	CATCH/HOUR		% OF TOT. C	SAMP
	weight	numbers		
Total				

PROJECT STATION: 45
DATE: 23/ 8/94 GEAR TYPE: BT No:1 POSITION: Lat S 355 Long E 1045
start stop duration Purpose code: 3
TIME :15:40:00 16:10:00 30 (min) Area code : 2
LOG :3873.70 3875.10 1.40 GearCond. code:
FDEPTH: 58 57 Validity code: 1
BDEPTH: 58 57
Towing dir: 316° Wire out: 260 m Speed: 29 kn*10
Sorted: 75 Kg Total catch: 679.07 CATCH/HOUR: 1358.14

SPECIES	CATCH/HOUR		% OF TOT. C	SAMP
	weight	numbers		
Trachurus trecae	548.10	15318	40.36	80
Brachydeuterus auritus	540.00	17226	39.76	
Pagellus bellottii	84.42	1314	6.22	78
Dentex angolensis	80.82	504	5.95	79
Priacanthus arenatus	37.80	342	2.78	
Raja miraletus	19.08	54	1.40	
Boops boops	13.86	468	1.02	
Sphyaera guachancho	11.70	36	0.86	
Pseudupeneus prayensis	8.10	72	0.60	
Sardinella maderensis	4.68	36	0.34	
Dentex canariensis	4.14	36	0.30	
Epinephelus aeneus	1.28	2	0.09	
Saurida brasiliensis	1.26	72	0.09	
Chilomycterus spinosus mauret.	0.92	2	0.07	
Chelidonichthys gabonensis	0.72	18	0.05	
Sardinella aurita	0.54	36	0.04	
Argocheilichthys imperialis	0.18	36	0.01	
Grazoplithea gruveli	0.18	18	0.01	
Lepidotrigla carolae	0.18	18	0.01	
Engraulis encrasicolus	0.18	18	0.01	
Total	1358.14		99.97	

PROJECT STATION: 41
DATE: 23/ 8/94 GEAR TYPE: BT No:6 POSITION: Lat S 412 Long E 1036
start stop duration Purpose code: 3
TIME :06:35:00 07:05:00 30 (min) Area code : 2
LOG :3811.70 3813.20 1.50 GearCond. code:
FDEPTH: 205 205 Validity code: 1
BDEPTH: 205 205
Towing dir: 315° Wire out: 650 m Speed: 30 kn*10
Sorted: 28 Kg Total catch: 198.93 CATCH/HOUR: 397.86

SPECIES	CATCH/HOUR		% OF TOT. C	SAMP
	weight	numbers		
Chlorophthalmus atlanticus	156.80	7966	39.41	
Trichurus lepturus	72.00	224	18.10	
Synagrops microlepis	57.20	2856	14.38	
Dentex angolensis	47.60	126	11.96	70
Pterothrissus belloci	21.00	126	5.28	
Parapenaeus longirostris	12.88	2044	3.24	71
Brotula barbata	7.14	14	1.79	
Chelidonichthys gabonensis	5.32	56	1.34	
Illex coindetii	3.78	140	0.95	
Sepia sp.	2.80	476	0.70	
Aulopus cadonati	2.10	14	0.53	
Bombrops heterus	2.10	28	0.53	
Zenopsis conchifer	2.10	28	0.53	
Merluccius polli	1.40	14	0.35	
Pontinus accraensis	1.12	14	0.28	
C R A B S	0.70	28	0.18	
Symphurus sp.	0.14	14	0.04	
Monoleone microstoma	0.14	14	0.04	
Total	396.32		99.63	

PROJECT STATION: 46
DATE: 23/ 8/94 GEAR TYPE: BT No:6 POSITION: Lat S 404 Long E 1027
start stop duration Purpose code: 3
TIME :18:40:00 19:10:00 30 (min) Area code : 2
LOG :3897.40 3898.90 1.50 GearCond. code:
FDEPTH: 274 280 Validity code: 1
BDEPTH: 274 280
Towing dir: 335° Wire out: 800 m Speed: 29 kn*10
Sorted: 32 Kg Total catch: 164.50 CATCH/HOUR: 329.00

SPECIES	CATCH/HOUR		% OF TOT. C	SAMP
	weight	numbers		
Chlorophthalmus atlanticus	163.50	3430	49.70	
Dentex angolensis	94.00	180	28.57	81
Merluccius polli	30.50	324	9.27	82
Malacocephalus occidentalis	8.00	40	2.43	
Peristodion cataphractum	5.00	300	1.52	
Trigla lyra	3.50	60	1.06	
Synagrops microlepis	3.50	40	0.91	
Brosimulus imberbis *	3.00	70	0.91	
Laeonema laureysi	2.60	30	0.79	
Etmopterus pusillus	2.60	160	0.79	
Zenion sp.	2.00	10	0.61	
Pterothrissus belloci	2.00	10	0.46	
Coelorrhinus coelorrhinus	1.50	40	0.46	
Parapenaeus longirostris	1.00	100	0.30	
Pontinus accraensis	1.00	40	0.30	
Plesionika martia	0.90	90	0.27	
Lepidotrigla cadmani	0.80	10	0.24	
Cynoponticus ferox	0.50	10	0.15	
Bathysgadus melanobranchus	0.40	30	0.12	
Scyliorhinus stellaris	0.30	10	0.09	
Chascanopsetta lugubris	0.20	10	0.06	
Monoleone microstoma	0.10	10	0.03	
OPHIDIIDAE	0.10	10	0.03	
Brachydeuterus auritus	0.10	10	0.03	
Epigonus pandionis	0.10	10	0.03	
Cyttopsia roseus	0.10	10	0.03	
MYCTOPHIDAE	0.10	20	0.01	
Total	328.32		99.77	

PROJECT STATION: 42
DATE: 23/ 8/94 GEAR TYPE: BT No:6 POSITION: Lat S 910 Long E 1045
start stop duration Purpose code: 3
TIME :09:10:00 09:40:00 30 (min) Area code : 2
LOG :3829.00 3830.50 1.50 GearCond. code:
FDEPTH: 91 91 Validity code: 1
BDEPTH: 91 91
Towing dir: 345° Wire out: 300 m Speed: 31 kn*10
Sorted: 165 Kg Total catch: 228.28 CATCH/HOUR: 456.56

SPECIES	CATCH/HOUR		% OF TOT. C	SAMP
	weight	numbers		
Trachurus trecae	211.18	884	46.25	74
Dentex angolensis	117.74	426	25.79	73
Trichurus lepturus	50.98	128	11.17	
Selene dorsalis	45.92	276	10.06	72
Branchiostegus semifasciatus	7.68	10	1.68	
Illex coindetii	7.42	924	1.63	
Scomber japonicus	3.68	10	0.81	
Chelidonichthys gabonensis	3.04	36	0.67	
Zenopsis conchifer	2.24	26	0.49	
Citharus linguatula	1.54	42	0.34	
Priacanthus arenatus	1.54	10	0.34	
Saurida brasiliensis	1.00	202	0.22	
Pagellus bellottii	0.80	10	0.18	
Liocarpinus corrugatus	0.80	112	0.18	
Sepia bertheloti	0.52	6	0.11	
Boops boops	0.48	26	0.11	
Microchirus frechkopi	0.00	2		
Spicara alta	0.00	2		
Total	456.56		100.03	

PROJECT STATION: 47
 DATE: 23/ 8/94 GEAR TYPE: PT No:2 POSITION: Lat S 348
 start stop duration Long E 1035
 TIME :23:00:00 23:30:00 30 (min) Purpose code: 1
 LOG :3932.20 3933.70 1.50 Area code : 2
 FDEPTH: 15 15 GearCond.code: 1
 BDEPTH: 64 68 Validity code: 1
 Towing dir: 240° Wire out: 110 m Speed: 35 kn*10
 Sorted: 71 Kg Total catch: 71.69 CATCH/HOUR: 143.38

SPECIES	CATCH/HOUR		% OF TOT. C	SAMP
	weight	numbers		
Trichiurus lepturus	50.50	70	35.22	
Trachurus trecae	44.70	316	31.18	83
Sardinella maderensis	29.80	162	20.78	85
Sardinella aurita	11.90	56	8.30	84
Scomber japonicus	4.22	20	2.94	86
Sepia bertheloti	0.64	14	0.45	
Saurida brasiliensis	0.60	122	0.42	
Illex coindetii	0.52	140	0.36	
Selene dorsalis	0.50	4	0.35	
Total	143.38		100.00	

PROJECT STATION: 52
 DATE: 24/ 8/94 GEAR TYPE: BT No:6 POSITION: Lat S 343
 start stop duration Long E 1026
 TIME :11:00:00 11:30:00 30 (min) Purpose code: 3
 LOG :4016.60 4018.00 1.40 Area code : 2
 FDEPTH: 75 73 GearCond.code: 1
 BDEPTH: 75 73 Validity code: 1
 Towing dir: 340° Wire out: 250 m Speed: 28 kn*10
 Sorted: 24 Kg Total catch: 87.89 CATCH/HOUR: 175.78

SPECIES	CATCH/HOUR		% OF TOT. C	SAMP
	weight	numbers		
Selene dorsalis	52.00	252	29.58	96
Dentex congosensis	49.80	868	28.33	98
Pagellus bellottii	43.00	2276	24.46	97
Boops boops	17.00	854	9.67	
Mustelus mustelus	5.62	2	3.20	
Zeus faber	2.80	8	1.59	
Chelidonichthys gabonensis	1.48	64	0.84	
Illex coindetii	1.20	202	0.60	
Spicara alta	0.84	28	0.48	
Trachurus trecae	0.84	168	0.48	
Sepia bertheloti	0.78	14	0.44	
Citharus linguatula	0.28	28	0.16	
Saurida brasiliensis	0.14	22	0.08	
Total	175.78		99.99	

PROJECT STATION: 48
 DATE: 24/ 8/94 GEAR TYPE: PT No:1 POSITION: Lat S 353
 start stop duration Long E 1045
 TIME :01:11:00 01:24:00 13 (min) Purpose code: 1
 LOG :3947.30 3948.00 0.70 Area code : 2
 FDEPTH: 12 13 GearCond.code: 1
 BDEPTH: 56 57 Validity code: 1
 Towing dir: 300° Wire out: 80 m Speed: 34 kn*10
 Sorted: 110 Kg Total catch: 2118.50 CATCH/HOUR: 9777.69

SPECIES	CATCH/HOUR		% OF TOT. C	SAMP
	weight	numbers		
Brachydeuterus auritus	7876.15	95866	80.55	87
Trachurus trecae	1799.08	14215	18.40	88
Scomber japonicus	96.92	268	0.99	
Sepia bertheloti	5.54	88	0.06	
Total	9777.69		100.00	

PROJECT STATION: 53
 DATE: 24/ 8/94 GEAR TYPE: BT No:1 POSITION: Lat S 350
 start stop duration Long E 1013
 TIME :13:34:00 14:04:00 30 (min) Purpose code: 3
 LOG :4035.80 4037.50 1.70 Area code : 2
 FDEPTH: 239 236 GearCond.code: 1
 BDEPTH: 239 236 Validity code: 1
 Towing dir: 310° Wire out: 740 m Speed: 30 kn*10
 Sorted: 26 Kg Total catch: 223.60 CATCH/HOUR: 447.20

SPECIES	CATCH/HOUR		% OF TOT. C	SAMP
	weight	numbers		
Chlorophthalmus atlanticus	345.60	9248	77.28	
Todaropsis sp.	24.96	256	5.58	
Synagrops microlepis	23.68	1200	5.30	
Dentex angolensis	20.50	52	4.58	99
Trichiurus lepturus	11.84	64	2.65	
Illex coindetii	6.56	304	1.47	
Zenopsis conchifer	4.16	16	0.93	
Raja straeleni	1.92	16	0.43	
Parapenaeus longirostris	1.60	176	0.36	
OPHICHTHIDAE	1.60	16	0.36	
Chelidonichthys gabonensis	1.60	16	0.36	
Epigonus pandionis	1.12	274	0.25	
Antigonia capros	0.64	16	0.14	
PORTUNIDAE	0.64	16	0.14	
Pterothrissus belloci	0.46	32	0.10	
Boops boops	0.16	16	0.04	
Sepia sp.	0.16	32	0.04	
Total	447.20		100.01	

PROJECT STATION: 49
 DATE: 24/ 8/94 GEAR TYPE: PT No:1 POSITION: Lat S 356
 start stop duration Long E 1052
 TIME :03:12:00 03:42:00 30 (min) Purpose code: 1
 LOG :3962.90 3964.80 1.90 Area code : 2
 FDEPTH: 10 10 GearCond.code: 1
 BDEPTH: 38 38 Validity code: 1
 Towing dir: 330° Wire out: 70 m Speed: 38 kn*10
 Sorted: 21 Kg Total catch: 21.86 CATCH/HOUR: 43.72

SPECIES	CATCH/HOUR		% OF TOT. C	SAMP
	weight	numbers		
Sardinella aurita	34.80	3978	79.60	89
Sepia bertheloti	3.66	18	8.37	
Sphyraena quachancho	3.48	10	7.96	90
Trachurus trecae	1.08	10	2.47	
Illex coindetii	0.30	200	0.69	
Brachydeuterus auritus	0.24	2	0.55	
Engraulis encrasicolus	0.08	8	0.18	
Saurida brasiliensis	0.08	10	0.18	
Total	43.72		100.00	

PROJECT STATION: 54
 DATE: 24/ 8/94 GEAR TYPE: BT No:1 POSITION: Lat S 345
 start stop duration Long E 1007
 TIME :15:47:00 16:17:00 30 (min) Purpose code: 3
 LOG :4053.00 4054.40 1.40 Area code : 2
 FDEPTH: 343 323 GearCond.code: 1
 BDEPTH: 343 323 Validity code: 1
 Towing dir: 330° Wire out: 1080 m Speed: 28 kn*10
 Sorted: 38 Kg Total catch: 164.20 CATCH/HOUR: 328.40

SPECIES	CATCH/HOUR		% OF TOT. C	SAMP
	weight	numbers		
Merluccius polli	150.44	1232	45.81	100
Chlorophthalmus atlanticus	93.00	1776	28.32	
Trichiurus lepturus	20.40	144	6.21	
Etreposebaestes imus	13.00	374	3.96	
Zenopsis conchifer	11.72	16	3.57	
Synagrops microlepis	11.46	322	3.49	
Todaropsis eblanae	4.58	42	1.39	
Parapenaeus longirostris	4.08	408	1.24	
Etomopterus polli	2.54	16	0.77	
Sepia sp.	2.20	102	0.67	
Epigonus pandionis	2.12	92	0.65	
Brosmiculus imberbis *	1.78	50	0.54	
Trigla lyra	1.70	16	0.52	
Plesionika martia	1.36	220	0.41	
Bathygadus melanobranchus	1.36	8	0.41	
Illex coindetii	1.26	24	0.38	
Chascanopeetta lugubris	1.26	8	0.38	
OPHICHTHIDAE	0.84	8	0.26	
Cyttopsis roseus	0.76	16	0.23	
Raja straeleni	0.50	8	0.15	
Laemonema laureysi	0.50	8	0.15	
GONOSTOMATIDAE	0.42	8	0.13	
Lestidiops sp.	0.24	16	0.07	
Coelorinchus coelorhincus	0.16	8	0.05	
MYCTOPHIDAE	0.16	126	0.05	
Bassanago albescens *	0.16	8	0.05	
Peristedion cataphractum	0.08	8	0.02	
Eumunida squamifera	0.08	8	0.02	
Dibranchius atlanticus	0.08	8	0.02	
Hymenoccephalus sp.	0.08	16	0.02	
Trachurus trecae	0.08	16	0.02	
Total	328.40		99.96	

PROJECT STATION: 50
 DATE: 24/ 8/94 GEAR TYPE: BT No:6 POSITION: Lat S 3039
 start stop duration Long E 1042
 TIME :06:34:00 07:04:00 30 (min) Purpose code: 3
 LOG :3984.80 3986.30 1.50 Area code : 2
 FDEPTH: 34 37 GearCond.code: 1
 BDEPTH: 34 37 Validity code: 1
 Towing dir: 165° Wire out: 125 m Speed: 31 kn*10
 Sorted: 12 Kg Total catch: 25.40 CATCH/HOUR: 50.80

SPECIES	CATCH/HOUR		% OF TOT. C	SAMP
	weight	numbers		
Ephippion guttifer	13.56	4	26.69	
Pagellus bellottii	10.24	112	20.16	91
Carcharhinus signatus	9.64	4	18.98	
Illex coindetii	4.84	2336	9.53	
Fistularia petimba	3.00	8	5.91	
Peristedion cataphractum	2.80	120	5.51	
Priscanthus arenatus	1.40	8	2.76	
Chlorophthalmus atlanticus	1.20	28	2.36	
Balistes capricus	1.20	4	2.36	
Geryon maritae	1.08	4	2.13	
Eumunida squamifera	0.80	84	1.57	
Chelidonichthys lucerna	0.56	4	1.10	
Liocarcinus corrugatus	0.32	40	0.63	
Cruriraja parcomaculata	0.16	12	0.31	
Total	50.80		100.00	

PROJECT STATION: 51
 DATE: 24/ 8/94 GEAR TYPE: BT No:6 POSITION: Lat S 333
 start stop duration Long E 1040
 TIME :08:24:00 08:54:00 30 (min) Purpose code: 3
 LOG :3996.40 3997.90 1.50 Area code : 2
 FDEPTH: 30 31 GearCond.code: 1
 BDEPTH: 30 31 Validity code: 1
 Towing dir: 165° Wire out: 100 m Speed: 31 kn*10
 Sorted: 58 Kg Total catch: 1060.38 CATCH/HOUR: 2120.76

SPECIES	CATCH/HOUR		% OF TOT. C	SAMP
	weight	numbers		
Brachydeuterus auritus	1571.40	41428	74.10	93
Trachurus trecae	248.40	2736	11.71	92
Chloroscombrus chrysurus	223.20	4464	10.52	94
Trichiurus lepturus	38.16	576	1.80	
Sphyraena quachancho	18.00	108	0.85	
Selene dorsalis	6.84	72	0.32	
Peristedion cataphractum	6.48	360	0.31	
Pagellus bellottii	3.96	36	0.19	
Pteroscopus pelli	3.60	36	0.17	
Sardinella aurita	0.72	36	0.03	95
Synchropus phaeon	0.00	36		
Total	2120.76		100.00	

PROJECT STATION: 55
DATE: 24/ 8/94 GEAR TYPE: BT No:1 POSITION: Lat S 143 Long E 1007
start stop duration
TIME :17:09:00 17:39:00 30 (min) Purpose code: 3
LOG :4059.00 4060.50 1.50 Area code : 2
FDEPTH: 152 149 GearCond.code: 1
BDEPTH: 152 149 Validity code: 1
Towing dir: 300° Wire out: 520 m Speed: 30 kn*10
Sorted: 56 Kg Total catch: 392.28 CATCH/HOUR: 784.56

SPECIES	CATCH/HOUR		% OF TOT. C	SAMP
	weight	numbers		
Umbrina canariensis	243.60	702	31.05	101
Synagrops microlepis	214.90	10556	27.39	
Spicara alta	131.60	574	16.77	102
Dentex congongensis	108.50	1442	13.83	103
Antigonia capros	19.88	840	2.53	
Zeus faber	16.38	70	2.09	
Trichiurus lepturus	11.62	42	1.48	
Aulopus cadenati	9.24	154	1.18	
Dentex angolensis	8.12	28	1.03	
Zenopsis conchifer	7.56	70	0.96	
Pseudolithus senegalensis	4.62	28	0.59	
Pterothrissus bellocci	2.80	14	0.36	
Illex coindetii	2.52	84	0.32	
Chelidonichthys gabonensis	1.68	28	0.21	
Arnoglossus sp.	1.12	42	0.14	
Lepidotrigla carolae	0.14	28	0.02	
Chascanopsetta lugubris	0.14	14	0.02	
Peristedion cataphractum	0.14	14	0.02	
Total	784.56		99.99	

PROJECT STATION: 59
DATE: 25/ 8/94 GEAR TYPE: BT No:6 POSITION: Lat S 326 Long E 1013
start stop duration
TIME :06:27:00 06:57:00 30 (min) Purpose code: 3
LOG :4151.80 4153.30 1.50 Area code : 2
FDEPTH: 63 63 GearCond.code: 1
BDEPTH: 63 63 Validity code: 1
Towing dir: 330° Wire out: 210 m Speed: 27 kn*10
Sorted: 30 Kg Total catch: 59.76 CATCH/HOUR: 119.52

SPECIES	CATCH/HOUR		% OF TOT. C	SAMP
	weight	numbers		
Pagellus bellottii	72.20	2208	60.41	
Sepia officinalis hierredda	11.32	44	9.47	
Trachurus trecae	9.40	108	7.86	
Boops boops	5.20	100	4.35	
Platularia petimba	4.68	4	3.92	
Saurida brasiliensis	4.64	104	3.68	
Trichiurus lepturus	3.60	4	3.01	
Priacanthus arenatus	3.00	24	2.51	
Scomber japonicus	1.40	174	1.17	121
Torpedo torpedo	1.20	4	1.00	
Illex coindetii	1.00	88	0.84	
Sardinella aurita	0.68	4	0.57	
Trachurus trecae, juvenile	0.52	140	0.44	120
Brachydeuterus auritus	0.36	4	0.30	
Chelidonichthys gabonensis	0.32	16	0.27	
Total	119.52		100.00	

PROJECT STATION: 56
DATE: 24/ 8/94 GEAR TYPE: PT No:1 POSITION: Lat S 337 Long E 1031
start stop duration
TIME :21:28:00 21:48:00 20 (min) Purpose code: 1
LOG :4095.20 4096.50 1.30 Area code : 2
FDEPTH: 15 15 GearCond.code: 1
BDEPTH: 47 48 Validity code: 1
Towing dir: 190° Wire out: 105 m Speed: 39 kn*10
Sorted: 29 Kg Total catch: 239.44 CATCH/HOUR: 718.32

SPECIES	CATCH/HOUR		% OF TOT. C	SAMP
	weight	numbers		
Brachydeuterus auritus	562.80	7851	78.35	106
Trachurus trecae	88.80	816	12.36	105
Sardinella maderensis	35.52	264	4.94	104
Trichiurus lepturus	15.36	24	2.14	
Sphyræna guachancho	8.16	24	1.14	
Scomber japonicus	7.68	48	1.07	
Total	718.32		100.00	

PROJECT STATION: 60
DATE: 25/ 8/94 GEAR TYPE: BT No:6 POSITION: Lat S 337 Long E 1007
start stop duration
TIME :08:32:00 09:02:00 30 (min) Purpose code: 3
LOG :4164.50 4165.90 1.40 Area code : 2
FDEPTH: 98 98 GearCond.code: 1
BDEPTH: 98 98 Validity code: 1
Towing dir: 330° Wire out: 330 m Speed: 29 kn*10
Sorted: 30 Kg Total catch: 90.10 CATCH/HOUR: 180.20

SPECIES	CATCH/HOUR		% OF TOT. C	SAMP
	weight	numbers		
Dentex congongensis	64.20	1596	35.63	123
Selene dorsalis	30.06	96	16.68	124
Pagellus bellottii	22.80	276	12.65	122
Trichiurus lepturus	18.00	36	9.99	
Mustelus mustelus	10.00	2	5.55	
Sparus pagrus africanus	9.28	6	5.15	
Sepia officinalis hierredda	8.40	12	4.66	
Raja miraletus	3.54	6	1.96	
Illex coindetii	3.24	360	1.80	
Chelidonichthys gabonensis	2.94	36	1.63	
Boops boops	2.40	168	1.33	
Torpedo torpedo	1.26	6	0.70	
Citharus linguatula	0.78	18	0.43	
Zeus faber	0.72	6	0.40	
Trachurus trecae	0.72	60	0.40	
Saurida brasiliensis	0.66	144	0.37	
Lepidotrigla carolae	0.60	48	0.33	
Dentex angolensis	0.30	12	0.17	
Scomber japonicus	0.30	24	0.17	
Total	180.20		100.00	

PROJECT STATION: 57
DATE: 24/ 8/94 GEAR TYPE: PT No:2 POSITION: Lat S 326 Long E 1032
start stop duration
TIME :23:36:00 23:56:00 20 (min) Purpose code: 1
LOG :4110.00 4111.00 1.20 Area code : 2
FDEPTH: 0 0 GearCond.code: 1
BDEPTH: 31 32 Validity code: 1
Towing dir: 190° Wire out: 105 m Speed: 39 kn*10
Sorted: 64 Kg Total catch: 4198.30 CATCH/HOUR: 12594.90

SPECIES	CATCH/HOUR		% OF TOT. C	SAMP
	weight	numbers		
Chloroscombrus chrysurus	7680.90	299649	60.98	
Sardinella maderensis	3102.00	77607	24.63	107
Brachydeuterus auritus	748.20	24939	5.94	
Sardinella aurita	493.20	10419	3.92	108
Trachurus trecae	329.10	6384	2.61	109
Selene dorsalis	167.70	3393	1.33	110
Sphyræna guachancho	73.80	600	0.59	111
Total	12594.90		100.00	

PROJECT STATION: 61
DATE: 25/ 8/94 GEAR TYPE: BT No:6 POSITION: Lat S 334 Long E 958
start stop duration
TIME :11:17:00 11:47:00 30 (min) Purpose code: 3
LOG :4182.00 4183.50 1.50 Area code : 2
FDEPTH: 176 173 GearCond.code: 1
BDEPTH: 176 173 Validity code: 1
Towing dir: 320° Wire out: 570 m Speed: 32 kn*10
Sorted: 38 Kg Total catch: 135.37 CATCH/HOUR: 270.74

SPECIES	CATCH/HOUR		% OF TOT. C	SAMP
	weight	numbers		
Spicara alta	93.44	1128	34.51	125
Zenopsis conchifer	56.70	274	20.94	
Dentex congongensis	39.56	498	14.61	127
Dentex angolensis	20.66	78	7.63	126
Antigonia capros	17.44	532	6.44	
Illex coindetii	15.34	560	5.67	
Zeus faber	10.50	22	3.88	
Aulopus cadenati	6.02	56	2.22	
Pterothrissus bellocci	3.08	22	1.14	
Raja miraletus	2.32	8	0.86	
Ophiurus aerepens	2.04	8	0.75	
Chelidonichthys gabonensis	1.68	22	0.62	
Todaropsis eblanæ	1.62	28	0.60	
Lepidotrigla carolae	0.14	8	0.05	
Monolepis microstoma	0.08	8	0.03	
Citharus linguatula	0.08	8	0.03	
Microchirus boscanion	0.08	8	0.03	
Peristedion cataphractum	0.08	8	0.03	
Saurida brasiliensis	0.08	14	0.03	
Schedophilus pamarco	0.02	8	0.01	
Total	270.96		100.08	

PROJECT STATION: 58
DATE: 25/ 8/94 GEAR TYPE: PT No:2 POSITION: Lat S 323 Long E 1032
start stop duration
TIME :01:32:00 02:02:00 30 (min) Purpose code: 1
LOG :4121.20 4123.10 1.90 Area code : 2
FDEPTH: 0 0 GearCond.code: 1
BDEPTH: 20 21 Validity code: 1
Towing dir: 149° Wire out: 120 m Speed: 38 kn*10
Sorted: 59 Kg Total catch: 809.40 CATCH/HOUR: 1618.80

SPECIES	CATCH/HOUR		% OF TOT. C	SAMP
	weight	numbers		
Chloroscombrus chrysurus	803.20	24112	49.62	112
Brachydeuterus auritus	494.20	18090	30.53	
Trachurus trecae	133.60	2160	8.25	116
Sphyræna guachancho	47.20	486	2.92	113
Sepia sp.	43.20	54	2.67	
Scomberomorus tritor	21.80	28	1.35	
Galeoides decadactylus	16.00	486	0.99	117
Sardinella maderensis	15.40	298	0.95	115
Pomadasys rogeri	14.40	28	0.89	
Selene dorsalis	14.40	324	0.89	114
Sardinella aurita	6.00	82	0.37	118
Ilisha africana	4.00	108	0.25	119
Eucinostomus melanopterus	3.00	54	0.19	
Trichiurus lepturus	2.20	28	0.14	
Parapennaeus longirostris	0.20	28	0.01	
Total	1618.80		100.02	

PROJECT STATION: 62
DATE: 25/ 8/94 GEAR TYPE: BT No:6 POSITION: Lat S 328 Long E 953
start stop duration
TIME :13:08:00 13:38:00 30 (min) Purpose code: 3
LOG :4193.00 4194.50 1.50 Area code : 2
FDEPTH: 115 118 GearCond.code: 1
BDEPTH: 115 118 Validity code: 1
Towing dir: 138° Wire out: 430 m Speed: 30 kn*10
Sorted: 114 Kg Total catch: 448.38 CATCH/HOUR: 896.76

SPECIES	CATCH/HOUR		% OF TOT. C	SAMP
	weight	numbers		
Umbrina canariensis	674.40	1488	75.20	130
Sparus pagrus africanus	135.72	192	15.13	128
Anthias anthias	27.36	312	3.05	129
Boops boops	19.20	936	2.14	
Dentex congongensis	14.76	228	1.65	
Zeus faber	11.76	12	1.31	
Raja straeleni	8.40	12	0.94	
Zenopsis conchifer	1.80	12	0.20	
Trachurus trecae	1.44	456	0.16	
Ariomma bondi	1.12	24	0.15	
Synchiropus phaeton	0.16	12	0.04	
Saurida brasiliensis	0.12	12	0.01	
Scomber japonicus	0.12	12	0.01	
Total	896.76		94.99	

PROJECT STATION: 63
DATE: 25/ 8/94 GEAR TYPE: BT No:6 POSITION: Lat S 319 Long E 1006

TIME :15:58:00 16:20:00 30 (min) Purpose code: 3
LOG :4212.00 4213.40 1.40 Area code : 2
FDEPTH: 60 56 GearCond.code: 1
BDEPTH: 60 56 Validity code: 1
Towing dir: 345° Wire out: 240 m Speed: 28 kn*10
Sorted: 18 Kg Total catch: 18.35 CATCH/HOUR: 36.70

SPECIES	CATCH/HOUR		% OF TOT. C	SAMP
	weight	numbers		
Sepia sp.	18.50	36	50.41	
Pagellus bellottii	2.66	42	7.25	131
Raja miraletus	2.40	10	6.54	
Alloteuthis africana	1.80		4.90	
Chelidonichthys gabonensis	1.62	38	4.41	
Syacium micrurum	1.54	16	4.20	
Umbra canariensis	1.50	2	4.09	
Fistularia petimba	1.46	6	3.98	
Scomber japonicus	1.42	212	3.87	
Dentex barnardi	0.74	2	2.02	
Lepidotrigla carolae	0.54	22	1.47	
Chilomycterus spinosus laurel.	0.40	2	1.09	
Illex coindetii	0.40	16	1.09	
Dentex gibbosus	0.26	2	0.71	
Citharus linguatula	0.26	8	0.71	
Todaropsis eblanae	0.24	10	0.65	
Trachurus trecae	0.20	20	0.54	
Monolepis mertensi	0.18	22	0.49	
Synchiropus phacton	0.16	6	0.44	
Chelidonichthys lucerna	0.14	2	0.38	
Saurida brasiliensis	0.10	18	0.27	
Anthias anthias	0.10	6	0.27	
Boops boops	0.06	2	0.16	
Antennarius "biocellatus"	0.02	2	0.05	
Total	36.70		99.99	

PROJECT STATION: 66
DATE: 26/ 8/94 GEAR TYPE: BT No:1 POSITION: Lat S 313 Long E 938

TIME :08:22:00 08:52:00 30 (min) Purpose code: 3
LOG :4306.30 4307.70 1.40 Area code : 2
FDEPTH: 136 135 GearCond.code: 1
BDEPTH: 136 135 Validity code: 1
Towing dir: 330° Wire out: 450 m Speed: 30 kn*10
Sorted: 71 Kg Total catch: 321.67 CATCH/HOUR: 643.34

SPECIES	CATCH/HOUR		% OF TOT. C	SAMP
	weight	numbers		
Dentex congoensis	216.44	368	33.64	139
Zenopsis conchifer	136.34	129	21.19	135
Boops boops	131.84	2878	20.49	138
Spicara alta	72.90	872	11.33	136
Dentex angolensis	52.64	342	8.10	137
Zeus faber	13.76	36	2.14	
Antigonia capros	5.58	242	0.87	
Todaropsis eblanae	3.78	108	0.59	
Aulopus cadenati	3.68	54	0.57	
Illex coindetii	2.78	152	0.43	
Ariomma boni	1.62	26	0.25	
Lepidotrigla carolae	1.26	54	0.20	
Peristedion cataphractum	0.54	18	0.08	
Sauriglossus capensis	0.18	8	0.03	
Total	643.34		99.99	

PROJECT STATION: 67
DATE: 26/ 8/94 GEAR TYPE: BT No:6 POSITION: Lat S 306 Long E 949

TIME :10:46:00 11:16:00 30 (min) Purpose code: 3
LOG :4323.10 4324.60 1.50 Area code : 2
FDEPTH: 73 69 GearCond.code: 1
BDEPTH: 73 69 Validity code: 1
Towing dir: 340° Wire out: 240 m Speed: 29 kn*10
Sorted: 66 Kg Total catch: 928.76 CATCH/HOUR: 1857.52

SPECIES	CATCH/HOUR		% OF TOT. C	SAMP
	weight	numbers		
Brachydeuterus auritus	955.40	11430	51.33	141
Pagellus bellottii	714.84	19320	36.48	142
Trachurus trecae	71.68	1372	3.86	140
Sepia bertheloti	58.24	1792	3.14	
Trichurus lepturus	19.60	28	1.06	
Pseudupeneus prayensis	12.32	196	0.66	
Sardinella aurita	5.22	56	0.29	
Boops boops	5.04	84	0.27	
Alloteuthis africana	4.20	868	0.23	
Scomber japonicus	4.20	532	0.23	
Chelidonichthys gabonensis	3.08	56	0.17	
Lepidotrigla carolae	2.80	140	0.15	
Saurida brasiliensis	2.80	224	0.15	
Total	1857.52		100.02	

PROJECT STATION: 64
DATE: 25/ 8/94 GEAR TYPE: BT No:6 POSITION: Lat S 316 Long E 1008

TIME :17:45:00 18:15:00 30 (min) Purpose code: 3
LOG :4223.40 4224.90 1.50 Area code : 2
FDEPTH: 48 43 GearCond.code: 1
BDEPTH: 48 43 Validity code: 1
Towing dir: 350° Wire out: 200 m Speed: 30 kn*10
Sorted: 42 Kg Total catch: 42.59 CATCH/HOUR: 85.18

SPECIES	CATCH/HOUR		% OF TOT. C	SAMP
	weight	numbers		
Pagellus bellottii	40.60	458	47.66	133
Sepia sp.	18.40	30	21.60	
Fistularia petimba	6.90	16	8.10	
Brachydeuterus auritus	4.42	32	5.19	132
Raja miraletus	3.00	46	3.52	
Dactylopterus volitans	2.96	10	3.47	
Chelidonichthys lucerna	1.98	22	2.32	
Decapterus rhonchus	1.08	2	1.27	
Syacium micrurum	0.98	16	1.15	
Zeus faber	0.92	2	1.08	
Torpedo torpedo	0.88	2	1.03	
Dicologlossa hexophthalma	0.58	8	0.68	
Trachinocephalus myops	0.44	4	0.52	
Chelidonichthys gabonensis	0.38	6	0.45	
Prionace glauca	0.36	2	0.42	
Uranoscopus polli	0.28	4	0.33	
Trachinus armatus	0.26	4	0.31	
Pseudupeneus prayensis	0.26	4	0.31	
Grammolites gruvelli	0.16	6	0.19	
Alloteuthis africana	0.12	30	0.14	
Scomber japonicus	0.08	16	0.09	
Citharus linguatula	0.04	4	0.05	
Lepidotrigla carolae	0.04	2	0.05	
Synchiropus phacton	0.02	2	0.02	
Todaropsis eblanae	0.02	2	0.02	
Illex coindetii	0.02	2	0.02	
Total	85.18		99.99	

PROJECT STATION: 68
DATE: 26/ 8/94 GEAR TYPE: BT No:6 POSITION: Lat S 301 Long E 1005

TIME :14:04:00 14:15:00 11 (min) Purpose code: 3
LOG :4348.80 4349.30 0.50 Area code : 2
FDEPTH: 27 27 GearCond.code: 1
BDEPTH: 27 27 Validity code: 1
Towing dir: 150° Wire out: 120 m Speed: 29 kn*10
Sorted: 64 Kg Total catch: 164.04 CATCH/HOUR: 894.76

SPECIES	CATCH/HOUR		% OF TOT. C	SAMP
	weight	numbers		
Decapterus rhonchus	416.62	1244	46.56	143
Pagellus bellottii	166.16	2688	40.92	144
Spicara caerulescictus	35.62	71	3.98	145
Dentex canariensis	25.91	38	2.90	146
Alloteuthis africana	19.09		2.13	
Fistularia petimba	9.00	27	1.01	
Raja miraletus	8.45	16	0.94	
Sphyræna guachancho	4.09	16	0.46	
Pseudupeneus prayensis	3.44	16	0.38	
Balistes capricornus	3.27	16	0.37	
Chelidonichthys lucerna	1.64	16	0.18	
Decapterus punctatus	1.47	16	0.16	
Total	894.76		99.99	

PROJECT STATION: 65
DATE: 26/ 8/94 GEAR TYPE: BT No:6 POSITION: Lat S 315 Long E 938

TIME :06:37:00 07:07:00 30 (min) Purpose code: 3
LOG :4300.00 4301.50 1.50 Area code : 2
FDEPTH: 255 261 GearCond.code: 1
BDEPTH: 255 261 Validity code: 1
Towing dir: 315° Wire out: 820 m Speed: 31 kn*10
Sorted: 23 Kg Total catch: 329.84 CATCH/HOUR: 659.68

SPECIES	CATCH/HOUR		% OF TOT. C	SAMP
	weight	numbers		
Chlorophthalmus atlanticus	253.40	7168	38.41	
Synagrops microlepis	151.20	11340	22.92	
Dentex angolensis	51.80	150	7.85	134
Merluccius polli	43.40	448	6.58	
Zenopsis conchifer	43.40	56	6.58	
Todaropsis eblanae	23.80	476	3.61	
Trichurus lepturus	19.60	84	2.97	
Peristedion cataphractum	16.80	308	2.55	
Ophisurus serpens	12.60	28	1.91	
Illex coindetii	11.20	672	1.70	
Eumunida squamifera	8.40	840	1.27	
Pterotrissus belloci	8.40	28	1.27	
Plesionika martia	6.16	1344	0.93	
Bombrops heterurus	3.08	56	0.47	
Epigonus pandionis	2.52	140	0.38	
Sepia sp.	1.96	168	0.30	
Coelorhynchus coelorhynchus	1.40	252	0.21	
Zenion hololepis	0.28	28	0.04	
Parapeneus longirostris	0.28	56	0.04	
Total	659.68		99.99	

PROJECT STATION: 69
DATE: 26/ 8/94 GEAR TYPE: BT No:6 POSITION: Lat S 251 Long E 954

TIME :16:43:00 17:13:00 30 (min) Purpose code: 3
LOG :4370.20 4371.70 1.50 Area code : 2
FDEPTH: 26 24 GearCond.code: 1
BDEPTH: 26 24 Validity code: 1
Towing dir: 340° Wire out: 120 m Speed: 30 kn*10
Sorted: 76 Kg Total catch: 183.20 CATCH/HOUR: 366.40

SPECIES	CATCH/HOUR		% OF TOT. C	SAMP
	weight	numbers		
Pagellus bellottii	245.80	3184	67.09	148
Chloroscombrus chrysurus	60.02	698	16.38	147
Decapterus rhonchus	24.14	92	6.59	149
Alectia alexandrinus	15.40	44	4.20	
Fistularia petimba	10.58	72	2.89	
Alloteuthis africana	3.76	1182	1.03	
Pseudupeneus prayensis	1.70	12	0.46	
Lagocephalus laevisgatus	1.32	4	0.36	
Chelidonichthys lucerna	1.14	8	0.31	
Sphyræna aphyraena	0.92	4	0.25	
Trachurus trecae juvenile	0.68	238	0.19	
Sardinella aurita	0.64	4	0.17	
Raja miraletus	0.22	4	0.06	
Illex coindetii	0.04	4	0.01	
Scomber japonicus	0.04	8	0.01	
Total	366.40		100.00	

PROJECT STATION: 70
DATE: 27/ 8/94 GEAR TYPE: BT No:6 POSITION: Lat S 300 Long E 939
start stop duration
TIME :05:37:00 07:07:00 30 (min) Purpose code: 3
LOG :4430.80 4432.20 1.40 Area code : 2
FDEPTH: 328 325 GearCond.code: 1
BDEPTH: 328 325 Validity code: 1
Towing dir: 320° Wire out:1000 m Speed: 29 kn*10
Sorted: 29 Kg Total catch: 126.32 CATCH/HOUR: 252.64

PROJECT STATION: 74
DATE: 28/ 8/94 GEAR TYPE: BT No:1 POSITION: Lat S 235 Long E 940
start stop duration
TIME :09:15:00 09:45:00 30 (min) Purpose code: 3
LOG :4496.40 4497.80 1.40 Area code : 2
FDEPTH: 26 24 GearCond.code: 1
BDEPTH: 26 24 Validity code: 1
Towing dir: 340° Wire out: 90 m Speed: 29 kn*10
Sorted: 7 Kg Total catch: 7.05 CATCH/HOUR: 14.10

SPECIES	CATCH/HOUR		% OF TOT. C	SAMP
	weight	numbers		
<i>Chlorophthalmus atlanticus</i>	137.20	2056	54.31	
MISCELLANEOUS	43.20	8016	17.10	
<i>Ijmaea loppei</i>	18.90	2	7.48	
<i>Synagrops microlepis</i>	15.36	280	6.08	
<i>Merluccius polli</i>	13.04	88	5.16	
<i>Illex coindetii</i>	7.68	192	3.04	
<i>Gadella imberbis</i>	4.64	128	1.84	
<i>Zenion hololepis</i>	3.76	216	1.49	
<i>Trigla lyra</i>	3.68	40	1.46	
<i>Etacipocobastes imus</i>	1.60	56	0.63	
<i>Coelorrhinus coelorrhinus</i>	1.20	16	0.47	
<i>Parapneustes longirostris</i>	0.96	72	0.38	
<i>Sepia elcysans</i>	0.64	24	0.25	
<i>Peristedion cataphractum</i>	0.40	16	0.16	
CONOSTOMATIDAE	0.40	80	0.16	
Total	252.66		100.01	

SPECIES	CATCH/HOUR		% OF TOT. C	SAMP
	weight	numbers		
<i>Alectia alexandrinus</i>	10.70	6	75.89	157
<i>Pistularia petimba</i>	3.40	18	24.11	
Total	14.10		100.00	

PROJECT STATION: 75
DATE: 28/ 8/94 GEAR TYPE: BT No:6 POSITION: Lat S 241 Long E 932
start stop duration
TIME :11:06:00 11:36:00 30 (min) Purpose code: 3
LOG :4509.50 4510.90 1.40 Area code : 2
FDEPTH: 51 51 GearCond.code: 1
BDEPTH: 51 51 Validity code: 1
Towing dir: 230° Wire out: 170 m Speed: 29 kn*10
Sorted: 48 Kg Total catch: 48.90 CATCH/HOUR: 97.80

SPECIES	CATCH/HOUR		% OF TOT. C	SAMP
	weight	numbers		
<i>Pagellus bellottii</i>	70.60	1420	72.19	158
<i>Sepia officinalis hierreddi</i>	14.50	50	14.83	
<i>Priacanthus arenatus</i>	2.08	26	2.11	
<i>Pistularia petimba</i>	1.98	28	2.02	
<i>Trachinus armatus</i>	1.76	34	1.80	
<i>Chelidonichthys lucerna</i>	1.68	28	1.72	
<i>Trachinocephalus myops</i>	1.36	10	1.39	
<i>Raja miraletus</i>	0.78	2	0.80	
<i>Dactylopterus volitans</i>	0.64	2	0.65	
<i>Dentex barnardi</i>	0.62	2	0.63	
<i>Pseudupeneus prayensis</i>	0.60	6	0.61	
<i>Trachinus sp</i>	0.54	2	0.55	
<i>Torpedo torpedo</i>	0.38	2	0.39	
<i>Allotautis africana</i>	0.24	2	0.25	
<i>Uranoscopus polli</i>	0.10	2	0.10	
<i>Chelidonichthys gabonensis</i>	0.08	2	0.08	
<i>Lepidotrigla carolae</i>	0.04	2	0.04	
Total	97.96		100.16	

PROJECT STATION: 71
DATE: 27/ 8/94 GEAR TYPE: BT No:6 POSITION: Lat S 258 Long E 927
start stop duration
TIME :08:20:00 08:50:00 30 (min) Purpose Code: 3
LOG :4440.10 4441.60 1.50 Area code : 2
FDEPTH: 178 170 GearCond.code: 1
BDEPTH: 178 170 Validity code: 1
Towing dir: 315° Wire out:1000 m Speed: 30 kn*10
Sorted: 58 Kg Total catch: 123.11 CATCH/HOUR: 246.22

SPECIES	CATCH/HOUR		% OF TOT. C	SAMP
	weight	numbers		
<i>Dentex angolensis</i>	73.00	248	30.46	151
<i>Illex coindetii</i>	72.80	212	29.57	192
<i>Spicara alta</i>	45.60		18.52	
<i>Spinephelus halfensis</i>	19.66	2	7.98	
<i>Trichurus lepturus</i>	8.88	20	3.61	
<i>Dentex congolensis</i>	7.76	84	3.15	150
<i>Pterothrissus belloti</i>	7.24	56	2.94	
<i>Umbra canariensis</i>	4.32	12	1.75	
<i>Citharus linguatula</i>	0.96	16	0.36	
<i>Chelidonichthys gabonensis</i>	0.92	12	0.37	
<i>Aulopus cadenati</i>	0.80	4	0.32	
<i>Anthias anthias</i>	0.72	8	0.29	
<i>Antigonia capros</i>	0.72	16	0.29	
<i>Todaropsis eblanac</i>	0.52	4	0.21	
<i>Peristedion cataphractum</i>	0.32	4	0.13	
Total	246.22		99.98	

PROJECT STATION: 76
DATE: 28/ 8/94 GEAR TYPE: BT No:6 POSITION: Lat S 247 Long E 923
start stop duration
TIME :13:08:00 13:38:00 30 (min) Purpose code: 3
LOG :4523.50 4524.90 1.40 Area code : 2
FDEPTH: 85 83 GearCond.code: 1
BDEPTH: 85 83 Validity code: 1
Towing dir: 340° Wire out: 340 m Speed: 29 kn*10
Sorted: 54 Kg Total catch: 54.50 CATCH/HOUR: 109.00

SPECIES	CATCH/HOUR		% OF TOT. C	SAMP
	weight	numbers		
<i>Pagellus bellottii</i>	31.80	656	31.01	159
<i>Saurida brasiliensis</i>	21.80	4360	20.00	
<i>Squatina oculata</i>	14.50	4	13.30	
<i>Chelidonichthys gabonensis</i>	9.20	180	8.44	
<i>Lepidotrigla carolae</i>	9.14	610	8.39	
<i>Sepia sp.</i>	6.10	56	5.60	
<i>Raja miraletus</i>	3.44	8	3.16	
<i>Priacanthus arenatus</i>	2.72	22	2.50	
<i>Pistularia petimba</i>	2.56	10	2.35	
<i>Octopus sp.</i>	1.28	2	1.17	
<i>Trichurus lepturus</i>	1.10	2	1.01	
<i>Ariomma bondi</i>	1.02	12	0.94	
<i>Chelidonichthys lucerna</i>	0.54	18	0.50	
<i>Spicara alta</i>	0.52	32	0.48	
<i>Citharus linguatula</i>	0.36	20	0.33	
<i>Boops boops</i>	0.28	6	0.26	
<i>Pseudupeneus prayensis</i>	0.24	6	0.22	
<i>Aulopus cadenati</i>	0.14	2	0.13	
<i>Trachinus armatus</i>	0.12	2	0.11	
<i>Sphaeroides pachygaster</i>	0.10	2	0.09	
<i>Allotautis africana</i>	0.02	6	0.02	
<i>Arnoglossus imperialis</i>	0.02	2	0.02	
Total	109.00		100.03	

PROJECT STATION: 72
DATE: 27/ 8/94 GEAR TYPE: BT No:6 POSITION: Lat S 254 Long E 932
start stop duration
TIME :10:30:00 11:00:00 30 (min) Purpose code: 3
LOG :4455.30 4456.80 1.50 Area code : 2
FDEPTH: 90 87 GearCond.code: 1
BDEPTH: 90 87 Validity code: 1
Towing dir: 330° Wire out: 300 m Speed: 30 kn*10
Sorted: 25 Kg Total catch: 208.72 CATCH/HOUR: 417.44

SPECIES	CATCH/HOUR		% OF TOT. C	SAMP
	weight	numbers		
<i>Dasyatis centroura</i>	160.00	2	38.33	
<i>Brachydeuterus auritus</i>	130.00	1340	31.14	155
<i>Dentex congolensis</i>	33.30	1470	7.98	154
<i>Pagellus bellottii</i>	24.10	530	5.77	153
<i>Saurida brasiliensis</i>	22.30	2930	5.27	
<i>Lepidotrigla carolae</i>	16.50	940	3.95	
<i>Erythrocles monodi</i>	5.50	10	1.32	
<i>Priacanthus arenatus</i>	5.30	30	1.27	
<i>Chelidonichthys gabonensis</i>	1.90	80	0.93	
<i>Chelidonichthys gabonensis</i>	3.30	80	0.93	
<i>Ariomma bondi</i>	3.30	80	0.93	
<i>Boops boops</i>	3.30	80	0.91	
<i>Sphaeroides pachygaster</i>	2.30	10	0.67	
<i>Citharus linguatula</i>	2.20	100	0.53	
<i>Sepia sp.</i>	1.50	30	0.36	
<i>Todaropsis eblanac</i>	0.80	10	0.19	
<i>Sardinella aurita</i>	0.70	20	0.17	
<i>Chelidonichthys lucerna</i>	0.60	20	0.14	
<i>Spicara alta</i>	0.30	20	0.07	
Total	421.10		100.86	

PROJECT STATION: 77
DATE: 28/ 8/94 GEAR TYPE: BT No:6 POSITION: Lat S 253 Long E 915
start stop duration
TIME :15:34:00 15:09:00 35 (min) Purpose code: 3
LOG :4540.40 4542.20 1.80 Area code : 2
FDEPTH: 158 162 GearCond.code: 1
BDEPTH: 158 162 Validity code: 1
Towing dir: 300° Wire out: 550 m Speed: 31 kn*10
Sorted: 58 Kg Total catch: 180.82 CATCH/HOUR: 309.98

SPECIES	CATCH/HOUR		% OF TOT. C	SAMP
	weight	numbers		
<i>Anthias anthias</i>	127.20	3504	41.03	160
<i>Dentex angolensis</i>	95.69	343	30.87	161
<i>Scorpaena elongata</i>	17.47	36	5.64	
<i>Zeus faber</i>	14.88	36	4.80	
<i>Sparus pagrus africanus</i>	11.49	10	3.71	
<i>Dentex congolensis</i>	10.75	96	3.47	162
<i>Torpedo torpedo</i>	6.72	7	2.17	
<i>Spicara alta</i>	5.64	55	1.82	
<i>Squalus mitsukurii</i>	5.57	2	1.80	
<i>Antigonia capros</i>	3.91	300	1.26	
<i>Aulopus cadenati</i>	3.79	36	1.22	
<i>Raja miraletus</i>	3.07	7	0.99	
<i>Ariomma bondi</i>	2.47	55	0.80	
<i>Pontinus accraensis</i>	0.67	19	0.22	
<i>Chelidonichthys gabonensis</i>	0.60	7	0.19	
<i>Sphaeroides pachygaster</i>	0.07	7	0.02	
Total	309.99		100.01	

PROJECT STATION: 73
DATE: 27/ 8/94 GEAR TYPE: BT No:6 POSITION: Lat S 247 Long E 940
start stop duration
TIME :12:32:00 13:02:00 30 (min) Purpose code: 3
LOG :4469.10 4470.50 1.40 Area code : 2
FDEPTH: 45 45 GearCond.code: 1
BDEPTH: 45 45 Validity code: 1
Towing dir: 335° Wire out: 200 m Speed: 28 kn*10
Sorted: 65 Kg Total catch: 109.73 CATCH/HOUR: 219.46

SPECIES	CATCH/HOUR		% OF TOT. C	SAMP
	weight	numbers		
<i>Pagellus bellottii</i>	169.34	2402	77.16	156
<i>Sepia officinalis hierreddi</i>	38.58	90	17.58	
<i>Pistularia petimba</i>	3.24	20	1.48	
<i>Scyllarides herklotzii</i>	3.04	4	1.39	
<i>Trachinocephalus myops</i>	1.44	6	0.66	
<i>Trachinus armatus</i>	1.14	20	0.52	
<i>Mustelus mustelus</i>	0.74	4	0.34	
<i>Priacanthus arenatus</i>	0.66	6	0.30	
<i>Dactylopterus volitans</i>	0.64	4	0.29	
<i>Chelidonichthys lucerna</i>	0.60	6	0.27	
<i>Dibranchius atlanticus</i>	0.04	4	0.02	
Total	219.46		100.01	

PROJECT STATION: 78
 DATE: 28/ 8/94 GEAR TYPE: BT No:6 POSITION: Lat S 255 Long E 914
 start stop duration Purpose code: 3
 TIME :17:21:00 17:51:00 30 (min) Area code : 2
 LOG :4549.70 4551.20 1.50 GearCond.code:
 FDEPTH: 399 408 Validity code: 2
 BDEPTH: 399 408
 Towing dir: 295° Wire out: 1200 m Speed: 30 kn*10
 Sorted: 23 Kg Total catch: 116.15 CATCH/HOUR: 232.70

SPECIES	CATCH/HOUR		% OF TOT. C	SAMP
	weight	numbers		
Nematocarcinus africanus	138.50	47600	59.52	
Merluccius polli	23.40	100	10.06	
Trichurus lepturus	21.00	30	9.02	
Chlorophthalmus atlanticus	17.00	280	7.31	
Ectreposebastes isus	5.10	720	2.19	
Chaacanopsetta lugubris	3.60	30	1.55	
HIPPOLITIDAE	2.80	230	1.20	
Dentex spinax	2.70	30	1.16	
Lacsonema laureysi	2.00	30	0.86	
Illex coindetii	1.80	60	0.77	
Trigla lyra	1.70	10	0.73	
Synagoge sp.	1.60	20	0.69	
Gadella imberbis	1.40	30	0.60	
Bathygadus melanobranchus	1.40	10	0.60	
Mysacocephalus italicus	1.40	150	0.60	
Malacocephalus laevis	1.40	20	0.60	
Stereomastix sp.	1.30	110	0.56	
Dibranchius atlanticus	1.10	30	0.47	
Ariomma bonfi	1.10	20	0.47	
Bumunda squamifera	1.00	10	0.43	
Trachipterus trachipterus	0.60	20	0.26	
Plesionika martia	0.40	70	0.17	
MYCTOPHIDAE	0.40	100	0.17	
Total	232.70		99.99	

PROJECT STATION: 82
 DATE: 29/ 8/94 GEAR TYPE: BT No:6 POSITION: Lat S 232 Long E 910
 start stop duration Purpose code: 3
 TIME :10:20:00 10:50:00 30 (min) Area code : 2
 LOG :4644.80 4646.30 1.50 GearCond.code:
 FDEPTH: 77 78 Validity code: 1
 BDEPTH: 77 78
 Towing dir: 330° Wire out: 250 m Speed: 31 kn*10
 Sorted: 20 Kg Total catch: 20.56 CATCH/HOUR: 41.16

SPECIES	CATCH/HOUR		% OF TOT. C	SAMP
	weight	numbers		
Pagellus bellottii	17.60	724	42.76	
Sepia sp.	7.72	100	10.76	
Lepidotrigla carolae	4.14	274	10.06	
Raja miraletus	2.80	10	6.80	
Chelidonichthys lucerna	1.78	28	4.32	
Dentex gibbosus	1.50	2	3.64	
Priacanthus arenatus	1.02	8	2.48	
Dentex congoensis	0.90	44	2.19	
Torpedo torpedo	0.84	2	2.04	
Chelidonichthys gabonensis	0.78	14	1.90	
Pseudupeneus prayensis	0.60	8	1.46	
Dactylopterus volitans	0.46	2	1.12	
Ariomma bonfi	0.40	6	0.97	
Spicara alta	0.16	10	0.39	
Fistularia petimba	0.16	2	0.39	
Trachinus armatus	0.10	2	0.24	
Citharus linguatula	0.04	2	0.10	
Boops boops	0.04	2	0.10	
Dentex angolensis	0.02	2	0.05	
Total	41.06		99.77	

PROJECT STATION: 79
 DATE: 29/ 8/94 GEAR TYPE: PT No:2 POSITION: Lat S 227 Long E 931
 start stop duration Purpose code: 1
 TIME :21:15:00 00:15:00 60 (min) Area code : 2
 LOG :4603.50 4607.10 3.60 GearCond.code:
 FDEPTH: 0 0 Validity code: 1
 BDEPTH: 27 26
 Towing dir: 125° Wire out: 100 m Speed: 37 kn*10
 Sorted: 51 Kg Total catch: 123.18 CATCH/HOUR: 123.18

SPECIES	CATCH/HOUR		% OF TOT. C	SAMP
	weight	numbers		
Sardinella maderensis	66.90	738	54.31	164
Decapterus rhombus	28.40	126	23.06	163
Engraulis encrasicolus	13.04	2738	10.59	166
Sardinella aurita	7.46	1094	6.06	165
Sphyræna guachancho	6.36	8	5.16	167
Chloroscombrus chrysurus	0.40	10	0.32	
Echeneis naucrates	0.32	2	0.26	
Iliaha africana	0.26	6	0.21	
Trachurus trecae	0.02	2	0.02	
Saurida brasiliensis	0.02	2	0.02	
Total	123.18		100.01	

PROJECT STATION: 83
 DATE: 29/ 8/94 GEAR TYPE: PT No:1 POSITION: Lat S 231 Long E 909
 start stop duration Purpose code: 1
 TIME :11:55:00 12:22:00 27 (min) Area code : 2
 LOG :4651.30 4653.10 1.80 GearCond.code:
 FDEPTH: 45 45 Validity code: 4
 BDEPTH: 79 75
 Towing dir: 30° Wire out: 120 m Speed: 36 kn*10
 Sorted: Kg Total catch: 0.39 CATCH/HOUR: 0.87

SPECIES	CATCH/HOUR		% OF TOT. C	SAMP
	weight	numbers		
ARGONAUTIDAE	0.80	2	91.95	
Illex coindetii	0.02	2	2.30	
Trachurus trecae	0.02	7	2.30	
Sciæna dorsalis	0.02	7	2.30	
Total	0.86		98.85	

PROJECT STATION: 84
 DATE: 29/ 8/94 GEAR TYPE: BT No:6 POSITION: Lat S 240 Long E 903
 start stop duration Purpose code: 3
 TIME :14:33:00 15:03:00 30 (min) Area code : 2
 LOG :4671.80 4673.30 1.50 GearCond.code:
 FDEPTH: 147 149 Validity code: 1
 BDEPTH: 147 149
 Towing dir: 125° Wire out: 520 m Speed: 30 kn*10
 Sorted: 47 Kg Total catch: 94.68 CATCH/HOUR: 189.36

SPECIES	CATCH/HOUR		% OF TOT. C	SAMP
	weight	numbers		
Dentex congoensis	62.80	1452	33.16	169
Antigonia capros	59.40	3336	31.37	
Aulopus cadenati	16.12	212	8.51	
Squatina aculeata	15.20	4	8.03	
Lepidotrigla carolae	9.64	400	5.09	
Lepidotrigla caduani	7.84	164	4.14	
Raja miraletus	5.24	12	2.77	
Zenopsis conchifer	5.04	4	2.66	
Boops boops	3.36	60	1.77	
Spicara alta	3.00	136	1.58	
Illex coindetii	0.68	36	0.36	
Todaropsis eblanae	0.52	28	0.27	
Chelidonichthys lucerna	0.44	16	0.23	
Saurida brasiliensis	0.04	8	0.02	
Anthias anthias	0.04	4	0.02	
Total	189.36		99.98	

PROJECT STATION: 80
 DATE: 29/ 8/94 GEAR TYPE: BT No:6 POSITION: Lat S 224 Long E 926
 start stop duration Purpose code: 3
 TIME :06:52:00 07:22:00 30 (min) Area code : 2
 LOG :4622.10 4623.60 1.50 GearCond.code:
 FDEPTH: 27 29 Validity code: 1
 BDEPTH: 77 29
 Towing dir: 300° Wire out: 80 m Speed: 28 kn*10
 Sorted: 68 Kg Total catch: 204.66 CATCH/HOUR: 409.32

SPECIES	CATCH/HOUR		% OF TOT. C	SAMP
	weight	numbers		
Decapterus rhombus	387.30	714	94.62	168
Pagellus bellottii	6.18	78	1.51	
Lethrinus atlanticus	3.60	6	0.88	
Pseudupeneus prayensis	3.60	18	0.88	
Dentex canariensis	2.64	24	0.64	
Fistularia petimba	2.58	30	0.63	
Citharichthys stampflii	1.44	6	0.35	
sparus caeruleostictus	1.26	6	0.31	
Stereomastix sp.	0.72	6	0.18	
Total	409.32		100.00	

PROJECT STATION: 85
 DATE: 29/ 8/94 GEAR TYPE: BT No:6 POSITION: Lat S 229 Long E 857
 start stop duration Purpose code: 3
 TIME :17:09:00 17:39:00 30 (min) Area code : 2
 LOG :4690.80 4692.40 1.60 GearCond.code:
 FDEPTH: 185 177 Validity code: 1
 BDEPTH: 185 177
 Towing dir: 330° Wire out: 620 m Speed: 30 Kn*10
 Sorted: 70 Kg Total catch: 244.98 CATCH/HOUR: 489.96

SPECIES	CATCH/HOUR		% OF TOT. C	SAMP
	weight	numbers		
Illex coindetii	372.40	11004	76.01	
Dentex congoensis	12.90	546	6.71	
Aulopus cadenati	22.04	308	4.50	
Trichurus lepturus	19.24	28	3.93	
Antigonia capros	15.04	580	3.07	
Squalus blainvilliei	9.10	6	1.86	
Todaropsis eblanae	8.74	6	1.78	
Lepidotrigla carolae	2.24	42	0.46	
Citharus linguatula	1.60	70	0.33	
Raja miraletus	1.60	28	0.33	
Chelidonichthys gabonensis	1.54	6	0.31	
Saurida brasiliensis	1.18	20	0.24	
Spicara alta	0.70	76	0.14	
Ariomma bonfi	0.70	20	0.14	
Lionarcibus corrugatus	0.34	6	0.07	
Synchropus phacton	0.20	20	0.04	
Arnoquosua capensis	0.14	10	0.03	
Monolele microstoma	0.14	6	0.03	
Pelistedion cataphractum	0.06	6	0.01	
Total	489.96		100.00	

PROJECT STATION: 81
 DATE: 29/ 8/94 GEAR TYPE: BT No:6 POSITION: Lat S 227 Long E 917
 start stop duration Purpose code: 3
 TIME :08:35:00 09:05:00 30 (min) Area code : 2
 LOG :4633.30 4634.70 1.40 GearCond.code:
 FDEPTH: 52 52 Validity code: 1
 BDEPTH: 52 52
 Towing dir: 330° Wire out: 170 m Speed: 31 kn*10
 Sorted: 5 Kg Total catch: 11.80 CATCH/HOUR: 23.60

SPECIES	CATCH/HOUR		% OF TOT. C	SAMP
	weight	numbers		
Sepia officinalis hierredra	8.84	24	37.46	
Pagellus bellottii	3.60	36	15.59	
Trachinus armatus	3.20	60	13.56	
Fistularia petimba	2.76	56	11.69	
Trachinocephalus myops	1.28	8	5.42	
Chelidonichthys lucerna	1.04	16	4.41	
Pseudupeneus prayensis	0.84	12	3.56	
Citharichthys stampflii	0.76	4	3.22	
Priacanthus arenatus	0.56	4	2.37	
Uranoscopus polli	0.52	8	2.20	
Bothus podas africanus	0.12	4	0.51	
Total	23.60		99.99	

PROJECT STATION: 86
 DATE: 29/ 8/94 GEAR TYPE: PT No:1 POSITION: Lat S 208 Long E 909
 start stop duration
 TIME : 22:24:00 22:44:00 20 (min) Purpose code: 1
 LOG : 4738.20 4739.20 1.00 Area code : 2
 FDEPTH: 15 15 GearCond. code: 1
 BDEPTH: 43 41 Validity code: 1
 Towing dir: 60° Wire out: 100 m Speed: 38 kn*10
 Sorted: 53 Kg Total catch: 3891.30 CATCH/HOUR: 11673.90

SPECIES	CATCH/HOUR		% OF TOT. C	SAMP
	weight	numbers		
Chloroscombrus chrysurus	6894.00	93960	59.05	170
Sardinella aurita	4716.00	48960	40.40	171
Lutjanus gorenensis	63.90	6	0.55	
Total	11673.90		100.00	

PROJECT STATION: 87
 DATE: 30/ 8/94 GEAR TYPE: BT No:6 POSITION: Lat S 209 Long E 849
 start stop duration
 TIME : 03:58:00 04:28:00 30 (min) Purpose code: 3
 LOG : 4783.80 4785.40 1.60 Area code : 2
 FDEPTH: 397 400 GearCond. code: 1
 BDEPTH: 397 400 Validity code: 1
 Towing dir: 145° Wire out: 1150 m Speed: 32 kn*10
 Sorted: 38 Kg Total catch: 125.63 CATCH/HOUR: 251.26

SPECIES	CATCH/HOUR		% OF TOT. C	SAMP
	weight	numbers		
Parapenaeopsis atlantica	101.14	18668	40.25	
Aulopus cadenati	83.30	1224	33.15	
Merluccius polli	37.52	182	14.93	172
Carcharias sp.	7.80	2	3.10	
Illex coindetii	3.78	48	1.50	
Malacocephalus occidentalis	3.42	252	1.36	
Todaropsis eblanae	3.36	22	1.34	
Epinephelus gorenensis	2.52	6	1.00	
Antimora rostrata	2.44	20	0.97	
Brachydeuterus auritus	2.16	62	0.86	
Dibranchius atlanticus	1.46	22	0.58	
Chascanopsetta lugubris	0.76	14	0.30	
Gadella imberbis	0.76	36	0.30	
Cyttopsis roseus	0.28	6	0.11	
Scorpaena angolensis	0.20	48	0.08	
C R A B S	0.14	6	0.06	
Etmopterus spinax	0.14	14	0.06	
TETRAODONTIDAE	0.08	20	0.03	
Total	251.26		99.98	

PROJECT STATION: 88
 DATE: 30/ 8/94 GEAR TYPE: BT No:3 POSITION: Lat S 205 Long E 854
 start stop duration
 TIME : 07:30:00 08:00:00 30 (min) Purpose code: 3
 LOG : 4797.90 4799.40 1.50 Area code : 2
 FDEPTH: 97 98 GearCond. code: 1
 BDEPTH: 97 98 Validity code: 1
 Towing dir: 360° Wire out: 320 m Speed: 29 kn*10
 Sorted: 60 Kg Total catch: 150.52 CATCH/HOUR: 301.04

SPECIES	CATCH/HOUR		% OF TOT. C	SAMP
	weight	numbers		
Pagellus bellottii	82.00	740	27.24	
Boops boops	61.00	1266	20.26	
Dentex gibbosus	46.26	126	15.37	173
Trachurus trecae	24.50	325	8.14	
Priacanthus arenatus	18.76	56	6.23	
Sepia sp.	17.90	210	5.95	
Ariomma bondi	10.50	266	3.49	
Dentex barnardi	6.86	26	2.28	
Raja miraletus	5.60	20	1.86	
Dentex canariensis	5.06	10	1.68	
Lepidotrigla carolae	4.76	246	1.58	
Lepidotrigla cadmani	3.80	76	1.26	
Chelidonichthys lucerna	3.16	50	1.05	
Anthias anthias	3.16	216	1.05	
Scorpaena elongata	2.70	6	0.90	
Illex coindetii	1.36	46	0.45	
Citharus linguatula	1.30	46	0.43	
Sargocentron hastatus	0.96	6	0.32	
Pseudupeneus prayensis	0.56	6	0.19	
Saurida brasiliensis	0.40	50	0.13	
Grammolites gruweli	0.30	6	0.10	
Spherooides pachyaster	0.16	6	0.05	
Chascanopsetta lugubris	0.10	6	0.03	
Total	301.16		100.04	

PROJECT STATION: 89
 DATE: 30/ 8/94 GEAR TYPE: BT No:6 POSITION: Lat S 202 Long E 859
 start stop duration
 TIME : 08:55:00 09:25:00 30 (min) Purpose code: 3
 LOG : 4805.30 4806.70 1.40 Area code : 2
 FDEPTH: 70 67 GearCond. code: 1
 BDEPTH: 70 67 Validity code: 1
 Towing dir: 70° Wire out: 230 m Speed: 29 kn*10
 Sorted: 36 Kg Total catch: 72.84 CATCH/HOUR: 145.68

SPECIES	CATCH/HOUR		% OF TOT. C	SAMP
	weight	numbers		
Pagellus bellottii	77.40	1504	53.13	
Dentex coqueensis	23.68	1040	16.25	
Sepia sp.	20.60	112	14.14	
Trachurus trecae	5.68	28	3.90	
Lepidotrigla carolae	5.60	272	3.84	
Lepidotrigla cadmani	3.60	128	2.47	
Sphyracna sphyraena	2.40	8	1.65	
Saurida brasiliensis	1.20	152	0.82	
Boops boops	1.16	28	0.80	
Chilomycterus spinosus mauret.	1.00	4	0.69	
Pseudupeneus prayensis	0.80	12	0.55	
Chelidonichthys lucerna	0.72	16	0.49	
Citharus linguatula	0.68	28	0.47	
Priacanthus arenatus	0.48	12	0.33	
Brachydeuterus auritus	0.32	4	0.22	
Grammolites gruweli	0.24	8	0.16	
Spherooides pachyaster	0.08	4	0.05	
Arboglossus imperialis	0.04	4	0.03	
Total	145.68		99.99	

PROJECT STATION: 90
 DATE: 30/ 8/94 GEAR TYPE: BT No:6 POSITION: Lat S 156 Long E 905
 start stop duration
 TIME : 10:27:00 10:57:00 30 (min) Purpose code: 3
 LOG : 4814.10 4815.60 1.50 Area code : 2
 FDEPTH: 44 41 GearCond. code: 1
 BDEPTH: 44 41 Validity code: 1
 Towing dir: 10° Wire out: 160 m Speed: 30 kn*10
 Sorted: 27 Kg Total catch: 55.68 CATCH/HOUR: 111.36

SPECIES	CATCH/HOUR		% OF TOT. C	SAMP
	weight	numbers		
Pagellus bellottii	50.20	912	45.08	
Pseudupeneus prayensis	40.40	612	36.28	
Decapterus rhonchus	13.40	28	12.03	
Trachurus trecae	3.28	44	2.95	
Syascium microrum	1.60	20	1.44	
Sepia sp.	0.96	12	0.86	
Sepia officinalis hierreda	0.80	4	0.72	
Chelidonichthys lucerna	0.32	4	0.29	
Boops boops	0.28	4	0.25	
Todaropsis eblanae	0.12	4	0.11	
Total	111.36		100.01	

PROJECT STATION: 91
 DATE: 30/ 8/94 GEAR TYPE: BT No:6 POSITION: Lat S 153 Long E 909
 start stop duration
 TIME : 11:53:00 12:23:00 30 (min) Purpose code: 3
 LOG : 4821.30 4822.90 1.60 Area code : 2
 FDEPTH: 30 35 GearCond. code: 1
 BDEPTH: 30 35 Validity code: 1
 Towing dir: 220° Wire out: 100 m Speed: 32 kn*10
 Sorted: 37 Kg Total catch: 94.48 CATCH/HOUR: 188.96

SPECIES	CATCH/HOUR		% OF TOT. C	SAMP
	weight	numbers		
Decapterus rhonchus	118.00	266	62.45	174
Pagellus bellottii	40.00	344	21.17	175
Chloroscombrus chrysurus	10.10	136	5.35	
Alectis alexandrinus	9.30	6	4.92	
Rachycentron canadum	3.90	6	2.06	
Psettodes belcheri	2.86	6	1.51	
Sepia officinalis hierreda	2.80	10	1.48	
Selene dorsalis	2.00	26	1.06	
Total	188.96		100.00	

Annex IV Instruments and fishing gear used

Acoustic instruments

The SIMRAD EK500/38 Khz scientific sounder was used during the survey for estimation of fish density. The EK500 has a built- in digital echo integrator, but the Bergen Echo Integrator system (BEI) was used throughout the survey. The details of the instrument settings are as follows:

Tranceiver settings:

Bandwith:	Wide (3.8 Khz)
Pulse length:	Medium (1 ms)
Max Power:	2000 Watt
Sv Transducer gain:	28.1 dB
Ts Transducer gain:	28.1 dB

Printer settings:

Range:	0 - 100 or 0 - 250 m
TVG:	20 log R
Sv Colour min:	- 64 dB

An ES38B with a 6.8° -3dB beamwith transducer was used for integration.

A calibration experiment using a standard copper sphere, performed in Baia dos Tigres 4/6 1994 gave the following results: Sv Transducer gain 28.1 dB, Ts Transducer gain 28.1 dB.

Glossary:

Sv Transducer gain: Peak transducer gain assumed during computation of volum backscattering strength.

Ts Transducer gain: Peak transducer gain assumed during computation of target strength.

Sv Colour min: Lower limit of colour scale relative to Volume back scattering.

Hydrography

Conductivity, temperature, density and oxygen were sampled regularly at CTD stations with a Seabird CTD-sonde. The salinity was calculated by a computer.

Fishing gear

The vessel has two different sized 'Åkrahamn' pelagic trawls and one Gisund super bottom trawl. During the present survey two 7.81 m², 1670kg 'Thyborøn-7' combi-doors were used on all trawls.

The bottom trawl has a headline of 31 m, footrope 47 m and 20 mm mesh size in the codend with an inner net of 10 mm mesh size. The estimated headline height is 5 m and distance between wings during towing about 18 m. The trawl is equipped with a 12" rubber bobbins gear. The sweeps are 40 m long.

The following drawings show the size of these trawls.

