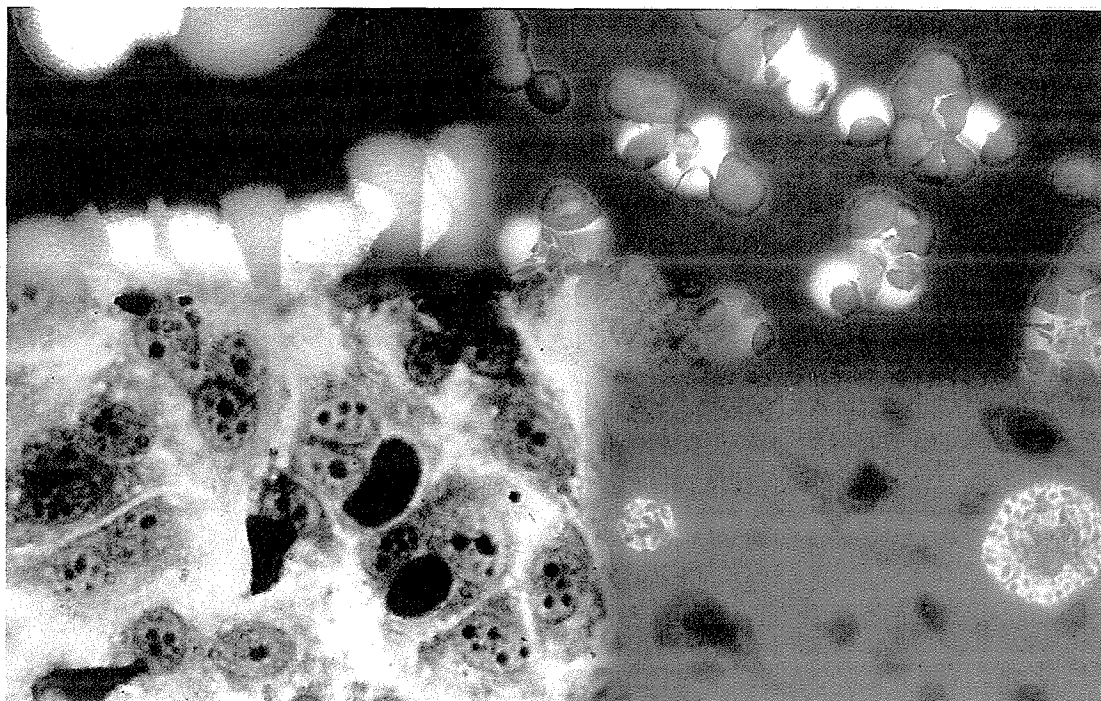




FAO LIBRARY AN: 431401

MANUAL FOR LABORATORY DIAGNOSIS OF INFECTIOUS ABORTIONS IN SMALL RUMINANTS



By :

A. RODOLAKIS

INSTITUT NATIONAL DE LA RECHERCHE AGRONOMIQUE (INRA)
TOURS, FRANCE

P. NETTLETON

MOREDUN RESEARCH INSTITUTE
EDINBURGH, UK

and

A. BENKIRANE

Animal Health Service, AGAH, FAO

**FOOD AND AGRICULTURE ORGANIZATION
OF THE UNITED NATIONS**
Rome, 1998

LIST OF AUTHORS

B.J.H. Barnard, Onderstepoort Veterinary Institute, Onderstepoort, South Africa.

Abdelali Benkirane, Animal Production and Health Division, Animal Health Service, FAO, Rome.

Jocelyn Brebner, Moredun Research Institute, 408 Gilmerton Road, Edinburgh EH17 7JH, Scotland.

David Buxton, Moredun Research Institute, 408 Gilmerton Road, Edinburgh EH17 7JH, Scotland.

Michel Calamel, CNEVA Sophia Antipolis, Laboratoire de Pathologie des Petits Ruminants et des Abeilles, "Les Templiers" 105, route des Chappes, -06410 BIOT, France.

William Donachie, Moredun Research Institute, 408 Gilmerton Road, Edinburgh EH17 7JH, Scotland.

Barbara Dufour, CNEVA Direction Generale, 23 Av General de Gualle BP19 94701, Maisons-Alfort, Cedex, France.

William A. Ellis, Veterinary Sciences Division, Stoney Road, Stormont, Belfast BT4 3SD, Northern Ireland.

M. Grayon, Pathologie Infectieuse et d'Immunologie, INRA, 37380 Nouzilly, France.

Maurice Lambert, CNEVA Sophia Antipolis, Laboratoire de Pathologie des Petits Ruminants et des Abeilles, "Les Templiers" 105, route des Chappes, -06410 BIOT, France.

Christiane Le Louedec, Pathologie Infectieuse et d'Immunologie, INRA, 37380 Nouzilly, France.

J.C. Low, SACVS Edinburgh, Bush Estate, Penicuik, Midlothian EH26 0QE, Scotland.

S.J. McDowell, Veterinary Sciences Division, Stoney Road, Stormont, Belfast BT4 3SD, Northern Ireland.

Francois Mouton, CNEVA Direction Generale, 23 Av General de Gualle BP19 94701, Maisons-Alfort, Cedex, France.

Peter F. Nettleton, Moredun Research Institute, 408 Gilmerton Road, Edinburgh EH17 7JH, Scotland.

P. Pardon, Pathologie Infectieuse et Immunologie, INRA, 37380 Nouzilly, France.

Michel Pepin, CNEVA Sophia Antipolis, Laboratoire de Pathologie des Petits Ruminants et des Abeilles, "Les Templiers" 105, route des Chappes, -06410 BIOT, France.

Michel Plommet, Pathologie Infectieuse et Immunologie, INRA, 37380 Nouzilly, France.

Hugh W. Reid, Moredun Research Institute, 408 Gilmerton Road, Edinburgh EH17 7JH, Scotland.

Annie Rodolakis, Pathologie Infectieuse et Immunologie, INRA, 37380 Nouzilly, France.

Pierre Russo, CNEVA Sophia Antipolis, Laboratoire de Pathologie des Petits Ruminants et des Abeilles, "Les Templiers" 105, route des Chappes, -06410 BIOT, France.

Richard Sanchis, CNEVA Sophia Antipolis, Laboratoire de Pathologie des Petits Ruminants et des Abeilles, "Les Templiers" 105, route des Chappes, -06410 BIOT, France.

Armel Souriau, Pathologie Infectieuse et Immunologie, INRA, 37380 Nouzilly, France.

J.M. Verger, Pathologie Infectieuse et Immunologie, INRA, 37380 Nouzilly, France.

Christian Vitu, CNEVA Sophia Antipolis, Laboratoire de Pathologie des Petits Ruminants et des Abeilles, "Les Templiers" 105, route des Chappes, -06410 BIOT, France.

PREFACE

Due to their wide adaptability to climatic conditions sheep and goats are raised worldwide. This industry is often the only possible deal in arid, poor soils inadequate to grow crops or to practice more lucrative livestock such as dairy farming. It provides a subsistence means and an occupation for a large proportion of rural populations being utilized at the same time as a treasury which is supplied by selling the flocks' offspring.

Any malfunctioning of the replacement within the flock can have a dramatic effect in terms of financial disponibility, sometimes resulting in rural exodus in developing countries.

Causes of abortion in small ruminants may be of a genetic, nutritional/toxic or more often of infectious nature. In the event of an abortion outbreak occurring in a given flock, it is necessary to immediately identify its specific cause and this will help in the decision-making to take control measures. Given that in most cases the clinical signs are not characteristic, laboratory diagnosis plays an important role in this process.

This is the reason why we are proposing this manual for the use of veterinarians, biologists and technicians dealing with veterinary diagnosis. This tool is of practical use for daily work on abortions of small ruminants and will hopefully improve the capability of diagnosticians, especially those working in developing countries where access to special documentation might be difficult.

Yves CHENEAU
Head of Animal Health Service
Animal Production and Health
Division

Foreword

In order to carry out the techniques described in this manual the following standard basic equipment of a diagnostic laboratory must be available:

- glassware : pipettes, tubes, microscope slides, etc....
- micropipettes
- centrifuges
- incubators
- water baths
- microscope...

Only specific equipment and materials will be mentioned for each technique.

CONTENTS

Page

Preface

Chapter 1

The importance of abortions in small ruminants

1.1 The economic importance of small ruminants	16
1.2 Methods of rearing around the world	17
1.2.1 Rearing by tethering	18
1.2.2 Nomadism	18
1.2.3 Seasonal movement or semi-nomadic	19
1.2.4 Intensive rearing	20
1.3 The importance of abortions among the diseases of small ruminants	21
1.3.1 Importance of research work on small ruminants	22
1.4 Pathology of abortive diseases of small ruminants	22
1.4.1 Genetic causes	22
1.4.2 Nutritional and toxic causes	24
1.4.3 Infectious causes	24
1.4.4 Immunity in abortive diseases	25
1.4.5 Abortive infections ; epidemiology; hygiene	26

Chapter 2

Methods of sample selection and collection

2.1 Summary	29
2.2 Introduction	29
2.3 Methods of sample selection	30
2.3.1 Sample quality	30
2.3.2 Different types of sampling	32
2.4 Samples	33
2.4.1 The placenta	34
2.4.2 Vaginal swabs	34
2.4.3 Tissues from aborted foetuses and newly dead lambs	35
2.4.4 Foetal fluids	35
2.4.5 Milk	35
2.4.6 Blood	36

Chapter 3

Differential diagnosis of infectious abortion in small ruminants

3.1 Summary	37
3.2 Introduction	37
3.3 Samples	38
3.4 Risks to human health	38
3.5 Direct diagnosis	38
3.5.1 Bacteriological examination	38
3.5.2 Culture methods	40

3.5.3 Interpretation of results and limitations	.41
3.6 Indirect diagnosis	.42
3.6.1 Principle	.42
3.6.2 Interpretation of results and limitations	.42
3.7 Conclusions and future work	.43

Chapter 4 Brucellosis

4.1 Summary	.47
4.2 Introduction	.47
4.3 Samples	.48
4.3.1 Treatment of samples for bacteriological examination	.49
4.4 Risks to human health	.49
4.5 Direct diagnosis	.50
4.5.1 Bacterial detection	.50
4.5.2 Identification of the <i>Brucella</i> genus	.51
4.5.3 Determination of species	.52
4.5.4 Biotype determination	.58
4.5.5 Differentiation between the Rev.1 vaccinal strain and wild strains of <i>B.melitensis</i>	.61
4.6 Indirect diagnosis: immunological tests	.61
4.6.1 Antigenic buffer test (Rose Bengal)	.61
4.6.2 Complement fixation	.62
4.6.3 Allergen test	.65
4.7 Future work	.66

Chapter 5 Chlamydiosis

5.1 Summary	.67
5.2 Introduction	.67
5.3 Samples	.69
5.3.1 Direct diagnosis	.69
5.3.2 Indirect diagnosis	.70
5.4 Risks to human health	.71
5.5 Direct diagnosis	.71
5.5.1 Bacteriological	.71
5.5.2 Antigen detection methods	.73
5.5.3 DNA analysis	.75
5.5.4 Isolation of <i>Chlamydia</i>	.76
5.5.5 Comparison of the different direct diagnostic techniques	.80
5.6 Indirect diagnosis	.80
5.6.1 Complement fixation	.80
5.6.2 ELISA	.83
5.6.3 Immunofluorescence	.85
5.6.4 Delayed hypersensitivity	.85
5.7 Trends and future work	.87

Chapter 6 Toxoplasmosis

6.1 Summary	.97
6.2 Introduction	.97
6.3 Samples	.99

6.3.1 Isolation	99
6.3.2 Histology	100
6.3.3 Antibody detection	100
6.4 Risks to human health	100
6.5 Direct diagnosis	101
6.5.1 Gross pathology of placenta and aborted foetuses	101
6.5.2 Histopathological examination of tissues	101
6.5.3 Detection of <i>Toxoplasma gondii</i>	103
6.5.4 Serological methods	104
6.6 Future work	108

Chapter 7 Q Fever

7.1 Summary	111
7.2 Introduction	111
7.3 Samples	112
7.3.1 Direct diagnosis	112
7.3.2 Indirect diagnosis	113
7.4 Risks to human health	113
7.5 Direct diagnosis	114
7.5.1 Bacteriology	114
7.5.2 Immunofluorescence	115
7.5.3 Isolation	116
7.6 Indirect diagnosis	118
7.6.1 Complement fixation	118
7.7 Future work	120

Chapter 8 Campylobacteriosis

8.1 Summary	123
8.2 Introduction	123
8.3 Samples	125
8.4 Risks to human health	125
8.5 Direct diagnosis	126
8.5.1 Gross pathology of the placenta and foetus	126
8.5.2 Isolation of <i>Campylobacter</i>	126
8.5.3 Identification of <i>Campylobacter</i> species	127
8.5.4 Further typing methods	130
8.5.5 DNA analysis	131
8.6 Indirect diagnosis	131
8.6.1 Histopathology	131
8.7 Future work	132

Chapter 9 Salmonellosis

9.1 Summary	133
9.2 Introduction	133
9.3 Samples	134
9.3.1 Direct diagnosis	135
9.3.2 Indirect diagnosis	135
9.4 Risks to human health	136
9.5 Direct diagnosis	136
9.5.1 Isolation	136
9.5.2 Identification	137

9.5.3 Interpretation of results	139
9.6 Indirect diagnosis	139
9.6.1 Seroagglutination	140
9.6.2 Interpretation of results	142
9.7 Future work	142

Chapter 10 Listeriosis

10.1 Summary	145
10.2 Introduction	145
10.3 Samples	147
10.3.1 Isolation of <i>Listeria</i>	147
10.3.2 Histopathology	148
10.4 Risks to human health	148
10.5 Direct diagnosis	148
10.5.1 Gross pathology of placenta and aborted fetuses	148
10.5.2 Isolation of <i>Listeria</i>	148
10.5.3 Identification of <i>Listeria</i> species	149
10.5.4 DNA analysis	152
10.5.5 Non-cultural methods of detection	152
10.6 Indirect diagnosis	152
10.6.1 Histopathology	152
10.7 Future work	153

Chapter 11 Leptospirosis

11.1 Summary	155
11.2 Introduction	155
11.3 Samples	158
11.3.1 Direct diagnosis	158
11.3.2 Indirect diagnosis	159
11.4 Risks to human health	159
11.5 Direct Diagnosis	159
11.5.1 Isolation	159
11.5.2 Demonstration of leptospire	160
11.6 Indirect diagnosis	161
11.6.1 Microscopic Agglutination Test (MAT)	162
11.7 Future work	163

Chapter 12 Other bacterial causes of abortion

12.1 Summary	165
12.2 Introduction	165
12.3 Abortions due to <i>Enterobacter</i>	166
12.3.1 Bacteria of the <i>Yersinia</i> genus	166
12.3.2 <i>Enterobacter cloacae</i> and other <i>Enterobacter</i>	166
12.4 Abortions due to <i>Actinomyces pyogenes</i>	166
12.5 Abortions due to other bacteria	167
12.6 Bacteria responsible for important diseases in small ruminants that do not cause abortion	167
12.7 Conclusion	168

Chapter 13 **Border disease**

13.1 Summary	169
13.2 Introduction	169
13.3 Samples	171
13.3.1 Virus isolation	171
13.3.2 Antigen detection	173
13.3.3 Histological examination	173
13.3.4 Antibody detection	173
13.4 Risks to human health	173
13.5 Direct diagnosis	173
13.5.1 Virus isolation	174
13.5.2 ELISA For antigen detection	175
13.5.3 Nucleic acid detection	177
13.6 Indirect diagnosis	177
13.6.1 Histopathology of the brain and spinal cord	177
13.6.2 Antibody detection	178
13.7 Future work	181

Chapter 14 **Arthropod-borne diseases**

14.1 Summary	183
14.2 Introduction	183
14.3 Samples	186
14.4 Risks to human health	186
14.5 Diagnosis	186
14.5.1 Rift Valley fever	186
14.5.2 Wesselsbron disease	188
14.5.3 Bluetongue	188
14.5.4 Akabane disease	188
14.6 Direct diagnosis	188
14.6.1 Virus isolation	188
14.7 Indirect diagnosis	190
14.7.1 Histopathology	190
14.7.2 Detection of viral antigen	191
14.7.3 Detection of viral antibodies	191
14.7.4 Virus neutralisation test	191
14.8 Future work	192

Chapter 15 **Nairobi sheep disease**

15.1 Summary	193
15.2 Introduction	193
15.3 Samples and diagnosis.	194